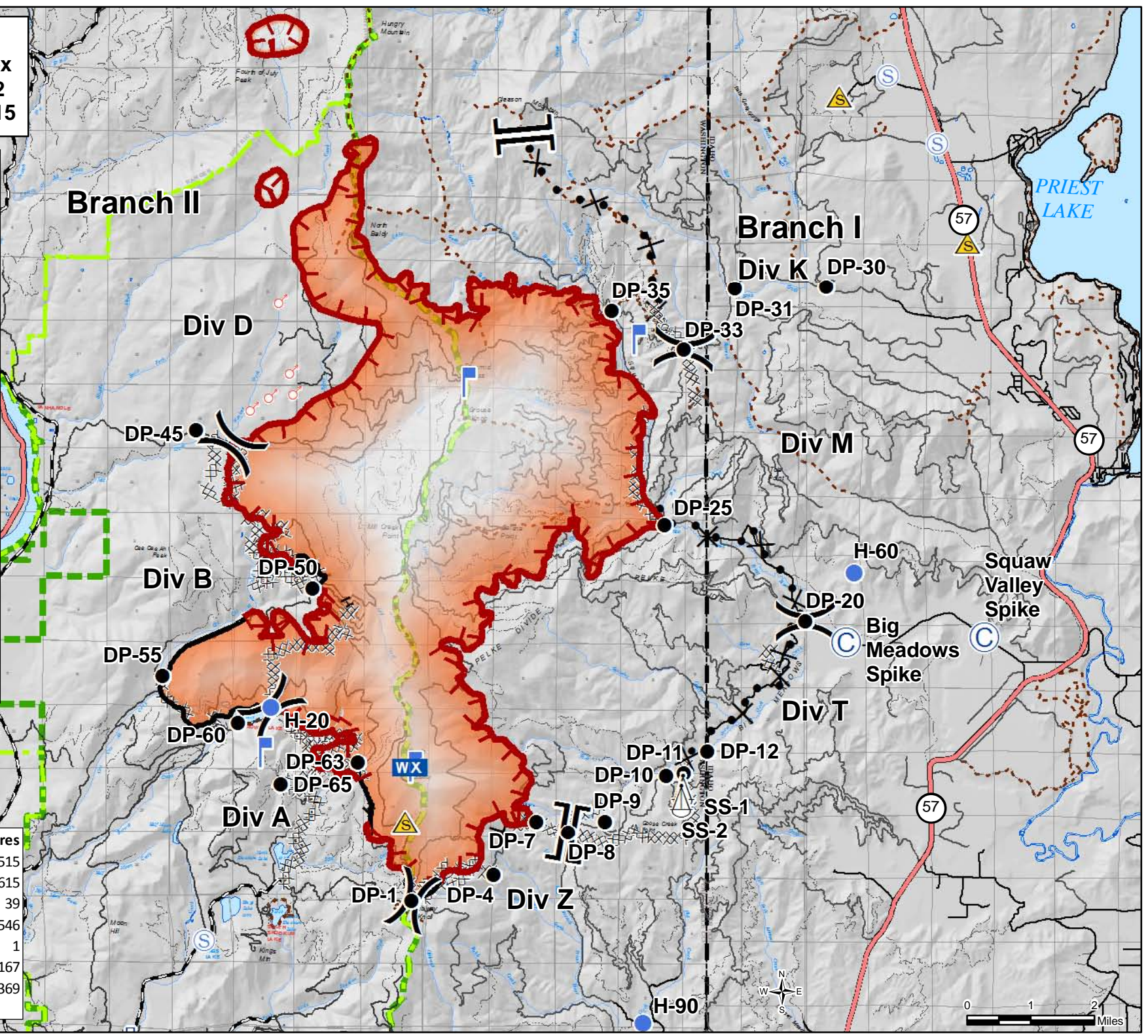


**Tower IAP
Kaniksu Complex
WA-COF-001302
September 1, 2015**

- Uncontrolled Fire Edge
- Completed Dozer Line
- Completed Line
- Hand Line
- Proposed Dozer Line
- Powerline
- Camp
- Drop Point
- First Aid Station
- Helispot
- Lookout
- Mobile Weather Unit
- Safety Zone
- Sling Site
- Spot Fire
- Staging Area



Fire	Acres
Baldy	515
Grease Creek	615
Hall Mtn	39
Onata	546
Slate Creek	1
S. Fork Slate Creek	167
Tower	24,369

as of 8/31 1700 hrs

