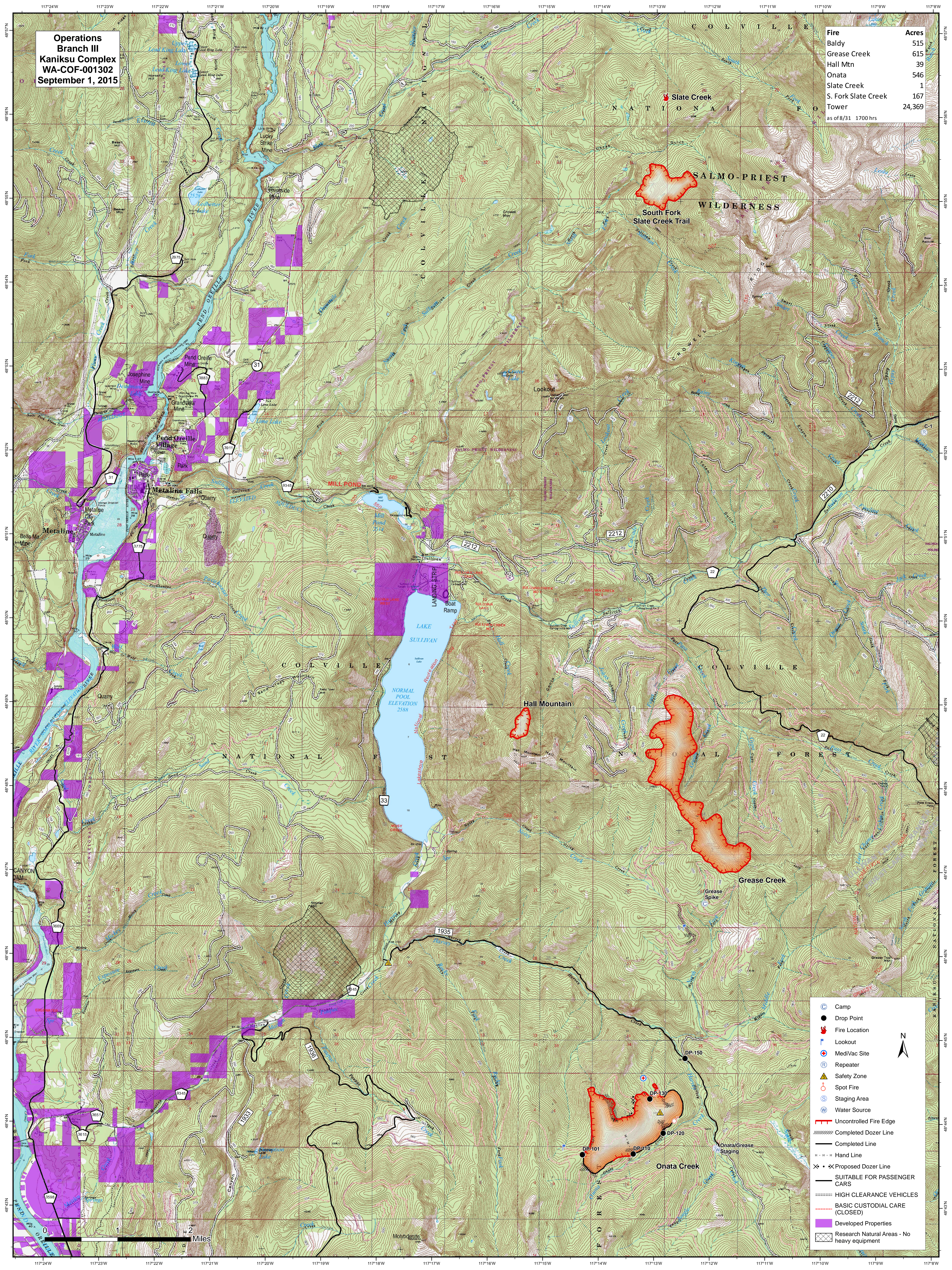


**Operations
Branch III
Kaniksu Complex
WA-COF-001302
September 1, 2015**

Fire	Acres
Baldy	515
Grease Creek	615
Hall Mtn	39
Onata	546
Slate Creek	1
S. Fork Slate Creek	167
Tower	24,369

as of 8/31 1700 hrs



	Camp
	Drop Point
	Fire Location
	Lookout
	MediVac Site
	Repeater
	Safety Zone
	Spot Fire
	Staging Area
	Water Source
	Uncontrolled Fire Edge
	Completed Dozer Line
	Completed Line
	Hand Line
	Proposed Dozer Line
	SUITABLE FOR PASSENGER CARS
	HIGH CLEARANCE VEHICLES
	BASIC CUSTODIAL CARE (CLOSED)
	Developed Properties
	Research Natural Areas - No heavy equipment

0 1 2 Miles