

117°12'W

117°11'W

117°10'W

117°9'W

0 0.5 1 Miles

Page # 1

48°36'N

48°36'N

48°35'N

48°35'N

48°34'N

48°34'N

48°33'N

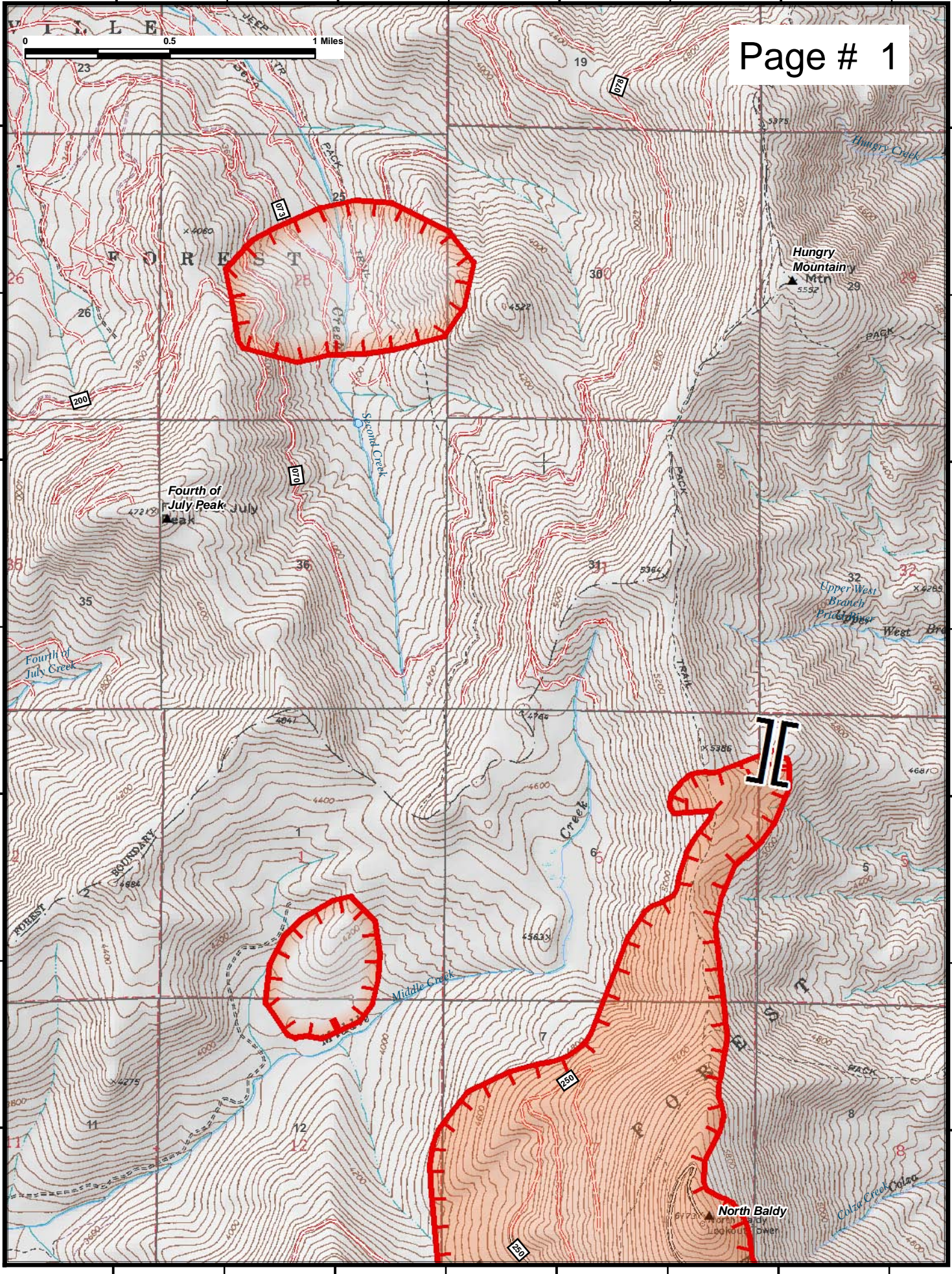
48°33'N

117°12'W

117°11'W

117°10'W

117°9'W



117°12'W 117°11'W 117°10'W 117°9'W 117°8'W

48°34'N

48°34'N

Page # 2

48°33'N

48°33'N

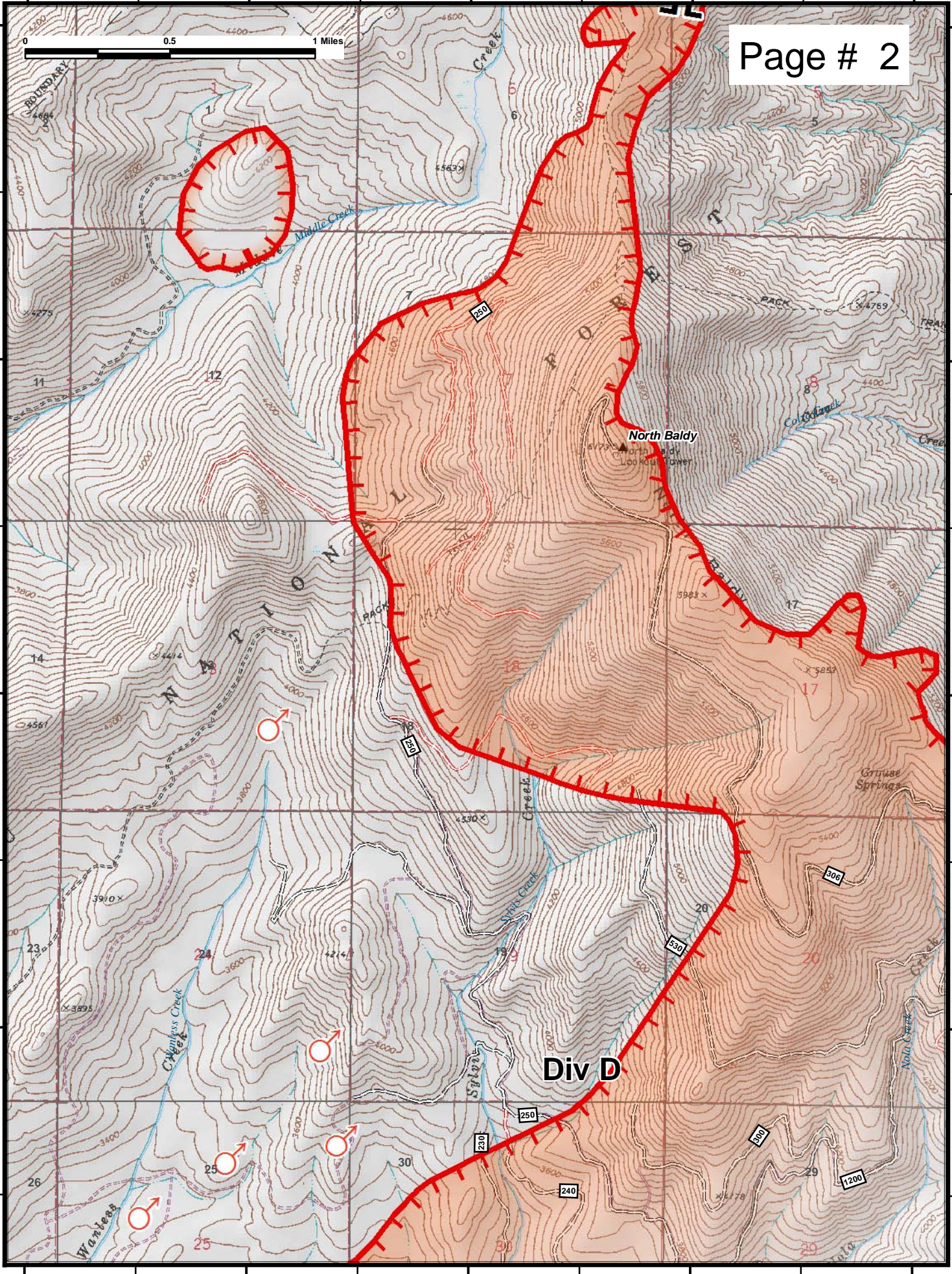
48°32'N

48°32'N

48°31'N

48°31'N

117°12'W 117°11'W 117°10'W 117°9'W 117°8'W

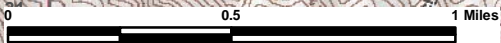


117°9'W

117°8'W

117°7'W

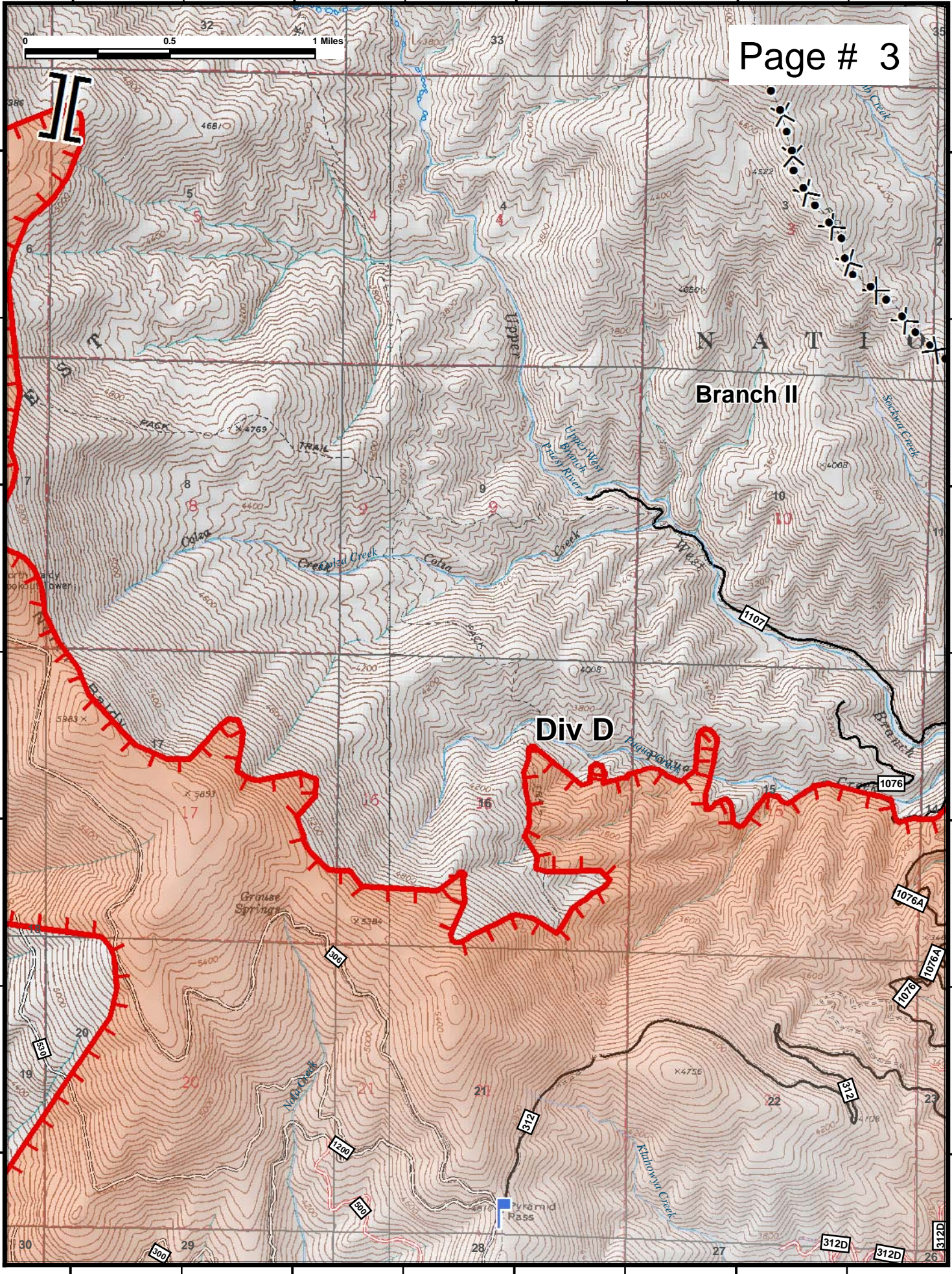
117°6'W



Page # 3

48°34'N
48°33'N
48°32'N
48°31'N

48°34'N
48°33'N
48°32'N
48°31'N



117°9'W

117°8'W

117°7'W

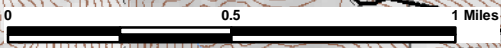
117°6'W

117°6'W

117°5'W

117°4'W

117°3'W



Page # 4

48°34'N

48°34'N

48°33'N

48°33'N

48°32'N

48°32'N

48°31'N

48°31'N

117°6'W

117°5'W

117°4'W

117°3'W

Branch II

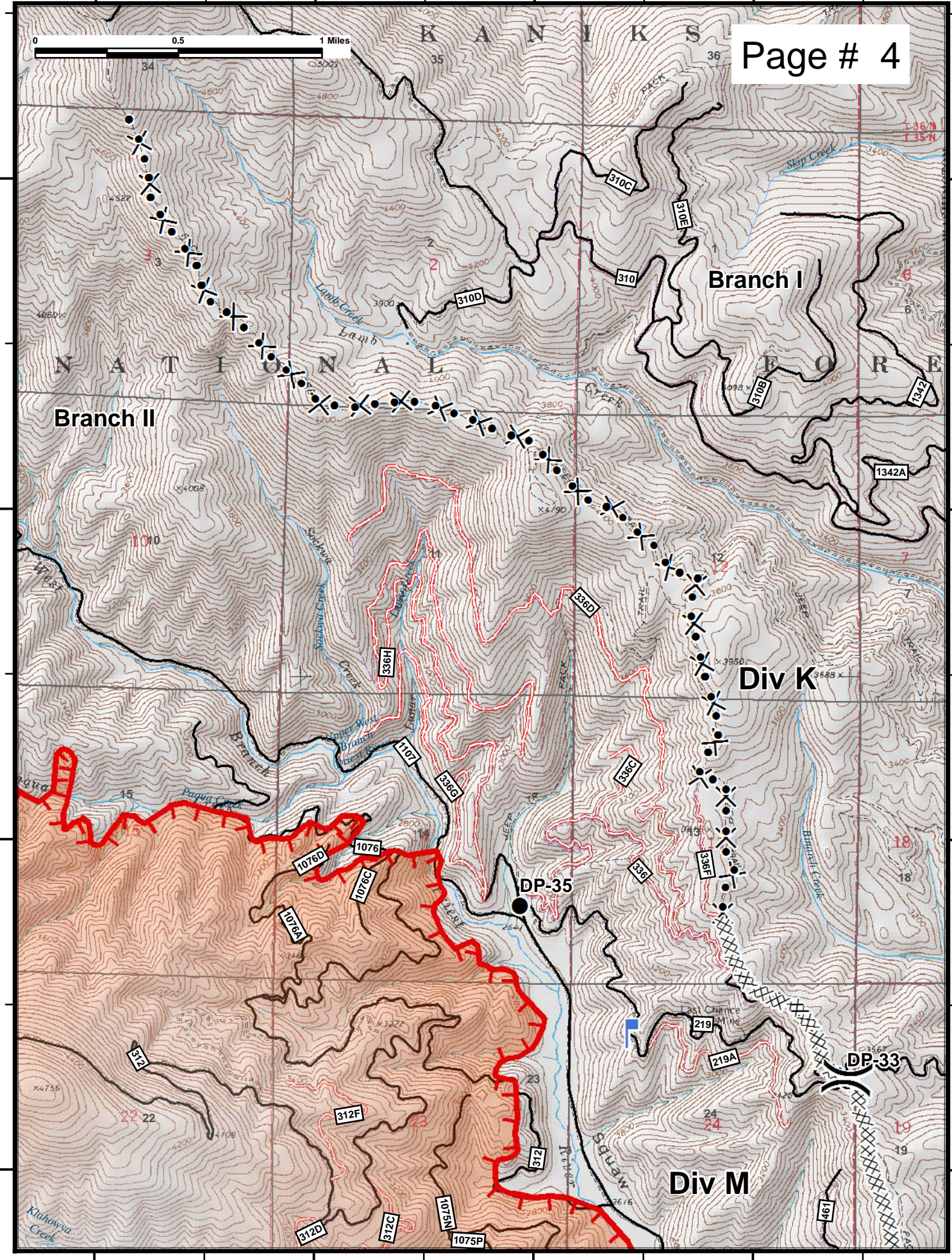
Branch I

Div K

Div M

DP-35

DP-33



117°13'W

117°12'W

117°11'W

117°10'W

Page # 5

48°31'N

48°31'N

48°30'N

48°30'N

48°29'N

48°29'N

48°28'N

48°28'N

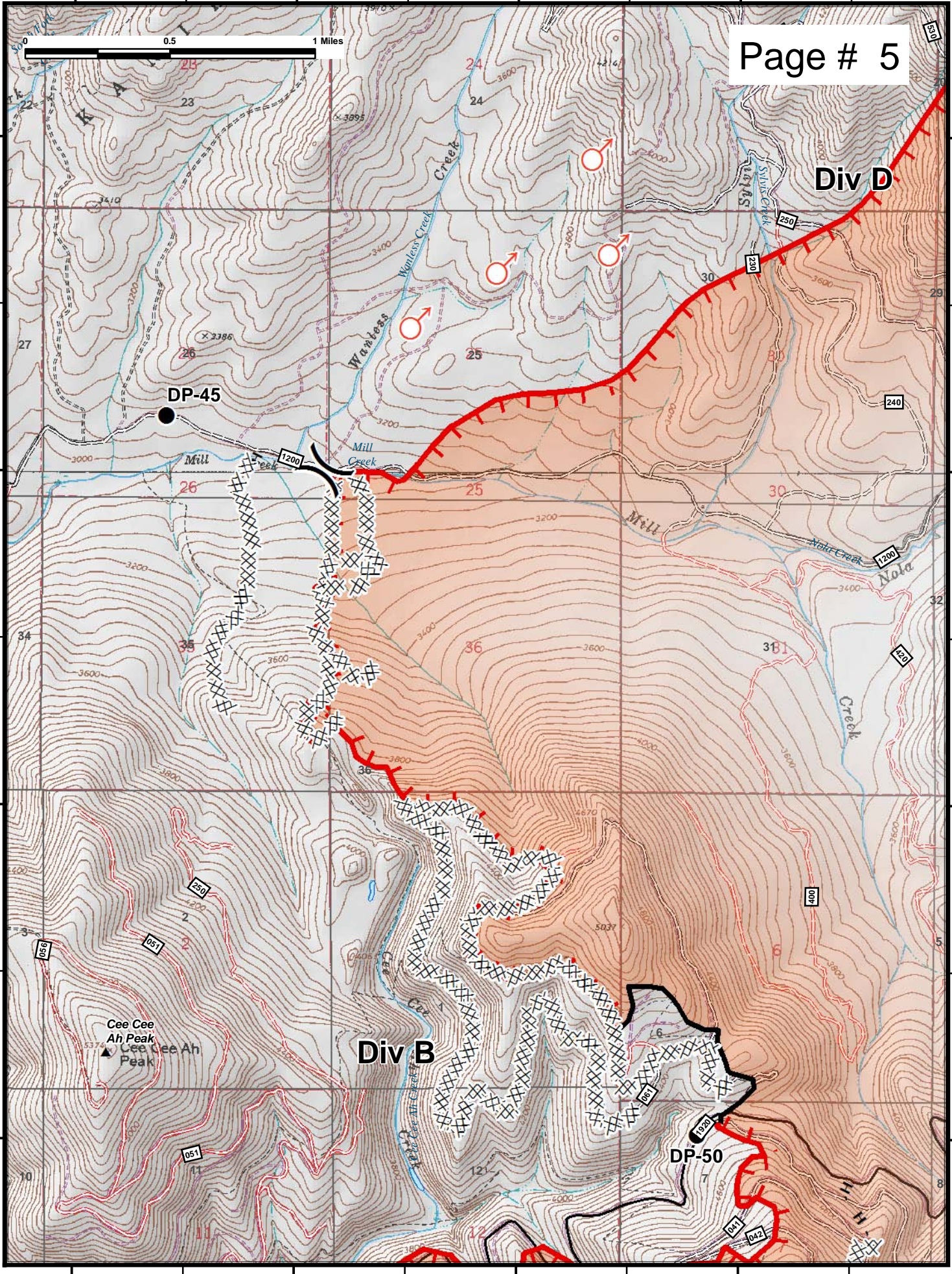
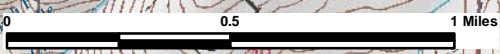
Div D

Div B

DP-45

DP-50

Cee Cee Ah Peak
▲ Cee Cee Ah Peak



117°10'W

117°9'W

117°8'W

117°7'W

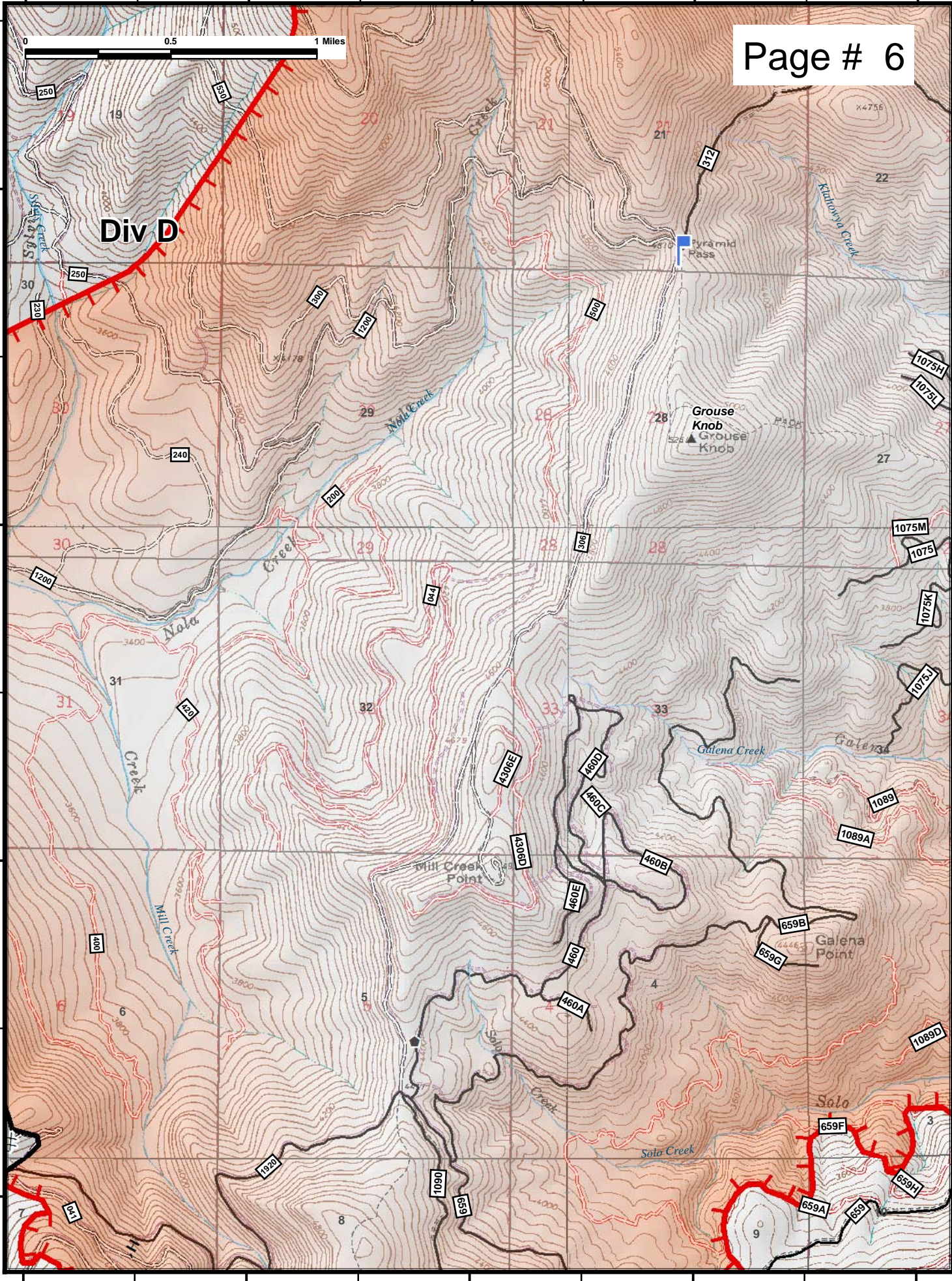
117°6'W

0 0.5 1 Miles

Page # 6

48°31'N
48°30'N
48°29'N
48°28'N

48°31'N
48°30'N
48°29'N
48°28'N



117°10'W

117°9'W

117°8'W

117°7'W

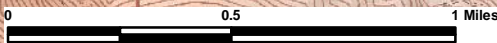
117°6'W

117°6'W

117°5'W

117°4'W

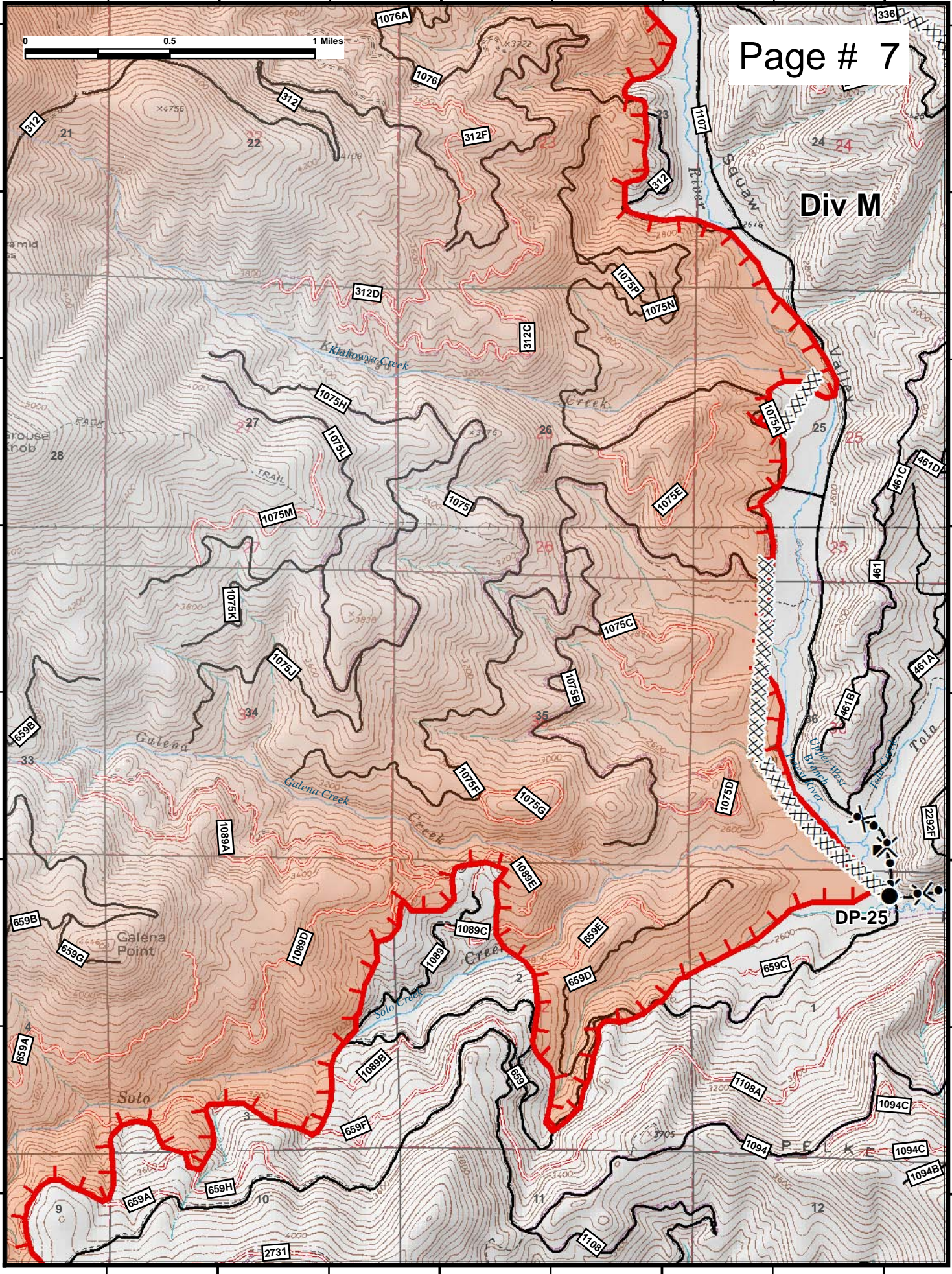
117°3'W



Page # 7

48°31'N
48°30'N
48°29'N
48°28'N

48°31'N
48°30'N
48°29'N
48°28'N



Div M

DP-25

117°6'W

117°5'W

117°4'W

117°3'W

48°28'N

117°4'W

117°3'W

117°2'W

117°1'W

48°31'N

48°31'N

48°30'N

48°30'N

48°29'N

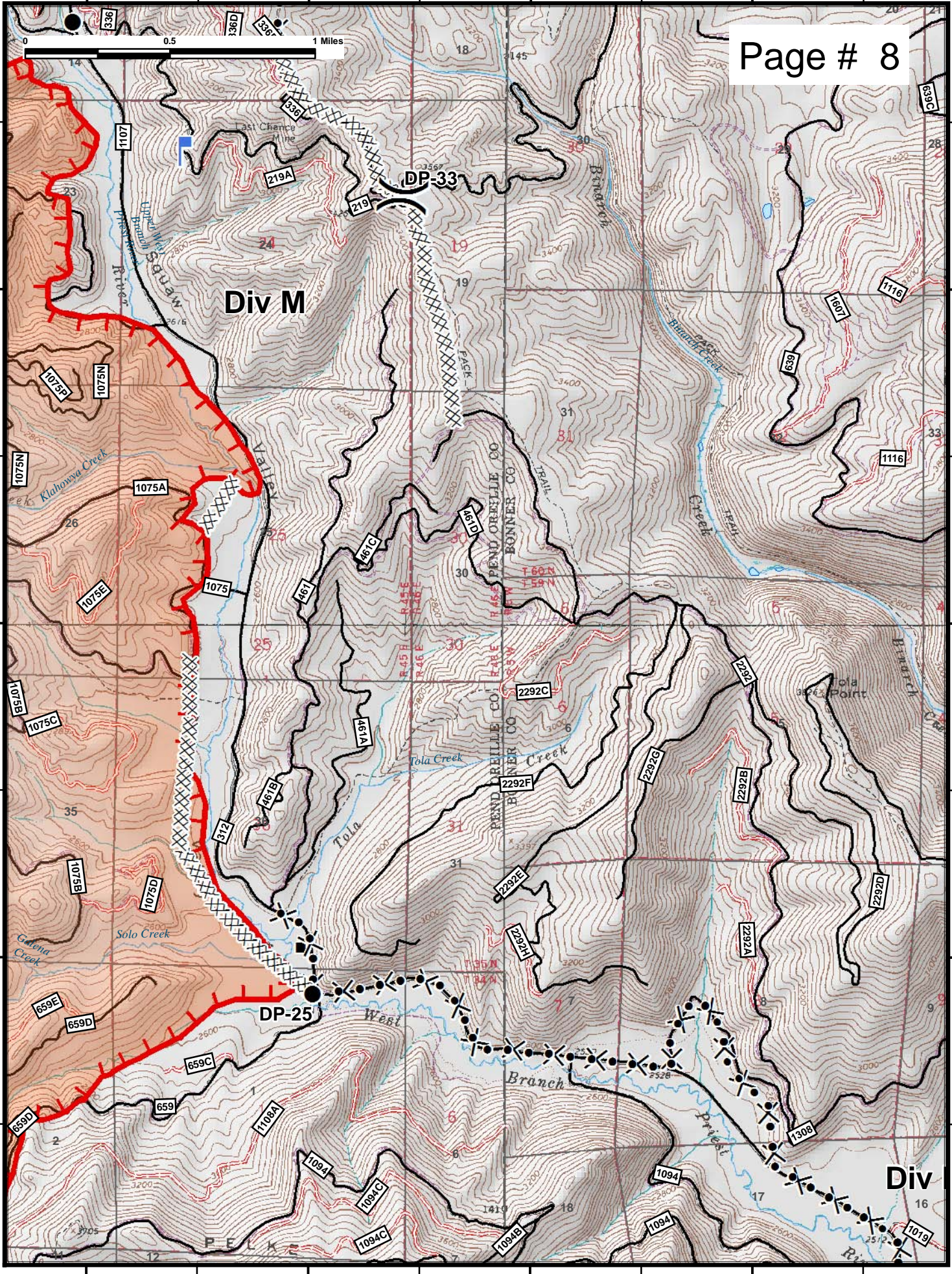
48°29'N

117°4'W

117°3'W

117°2'W

117°1'W



117°14'W

117°13'W

117°12'W

117°11'W

Div B

Div A

DP-55

DP-60

H-20

DP-65

Cee Cee Ah Peak
▲ Cee Cee Ah Peak

Browns Lake

NATIONAL

KANIKS



48°28'N

48°28'N

48°27'N

48°27'N

48°26'N

48°26'N

48°25'N

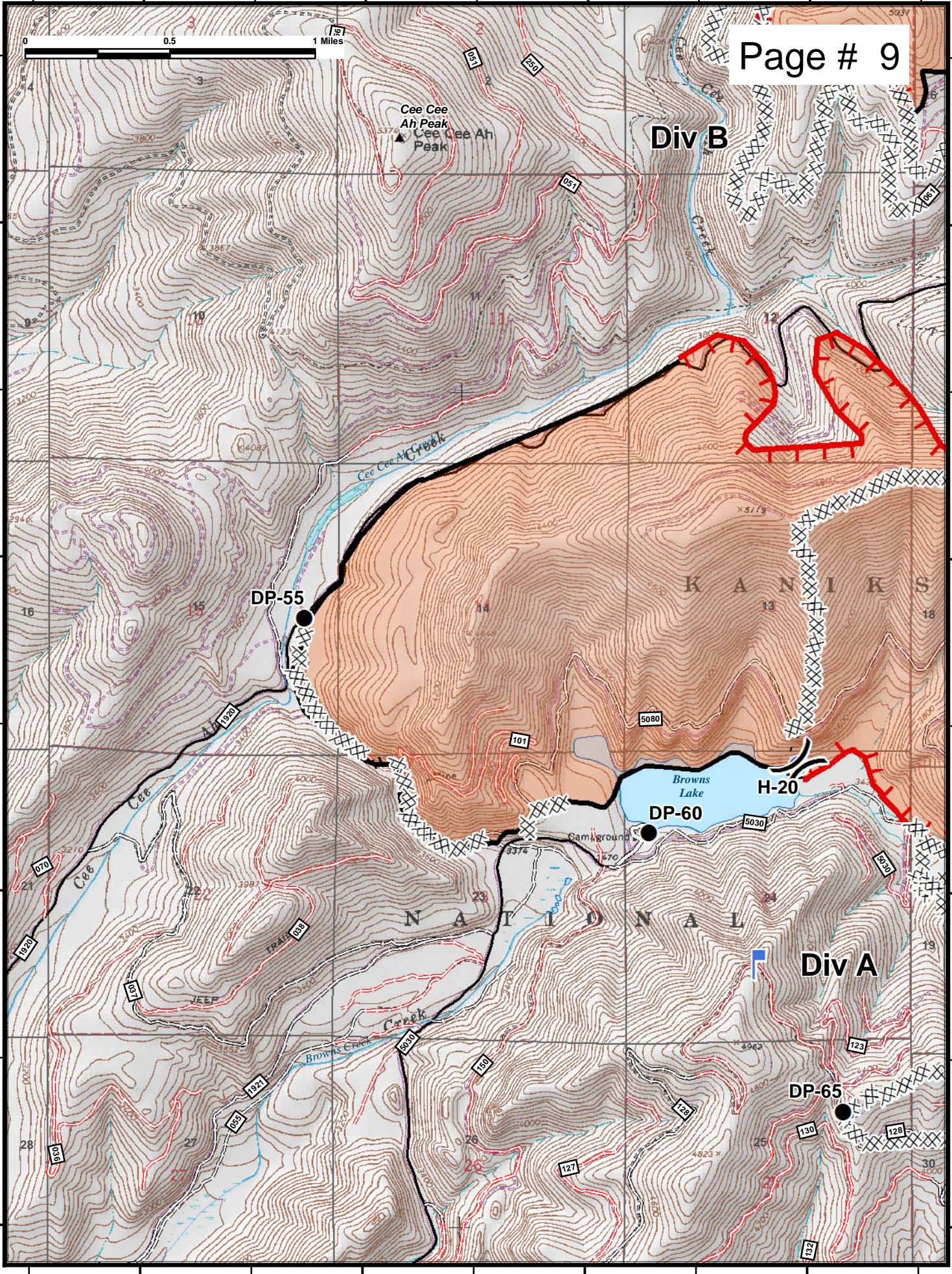
48°25'N

117°14'W

117°13'W

117°12'W

117°11'W

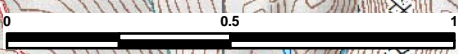


117°12'W

117°11'W

117°10'W

117°9'W



48°28'N

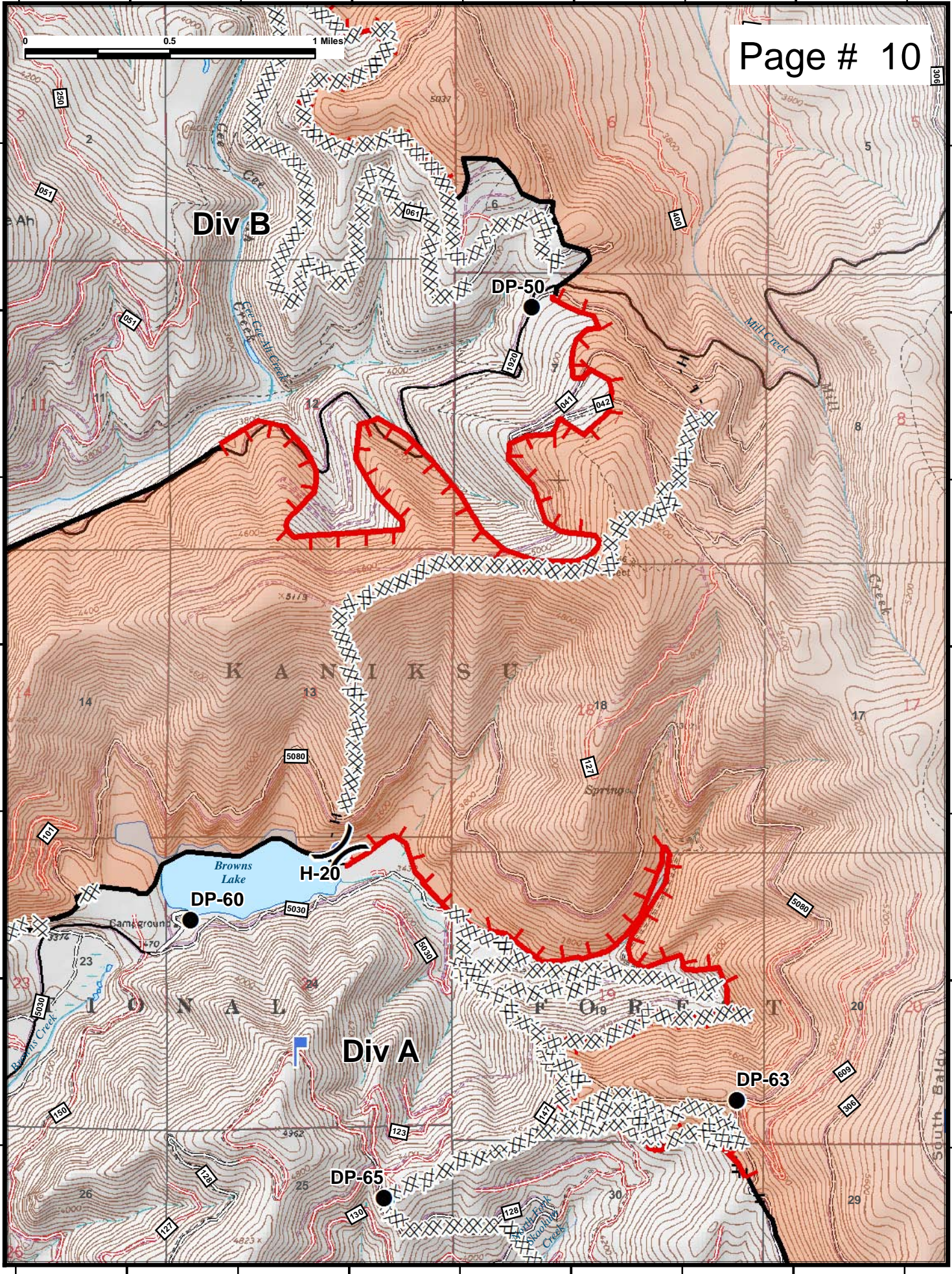
48°28'N

48°27'N

48°27'N

48°26'N

48°26'N



117°12'W

117°11'W

117°10'W

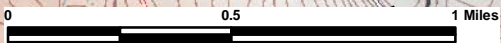
117°9'W

117°9'W

117°8'W

117°7'W

117°6'W



Page # 11

48°28'N

48°28'N

48°27'N

48°27'N

48°26'N

48°26'N

48°25'N

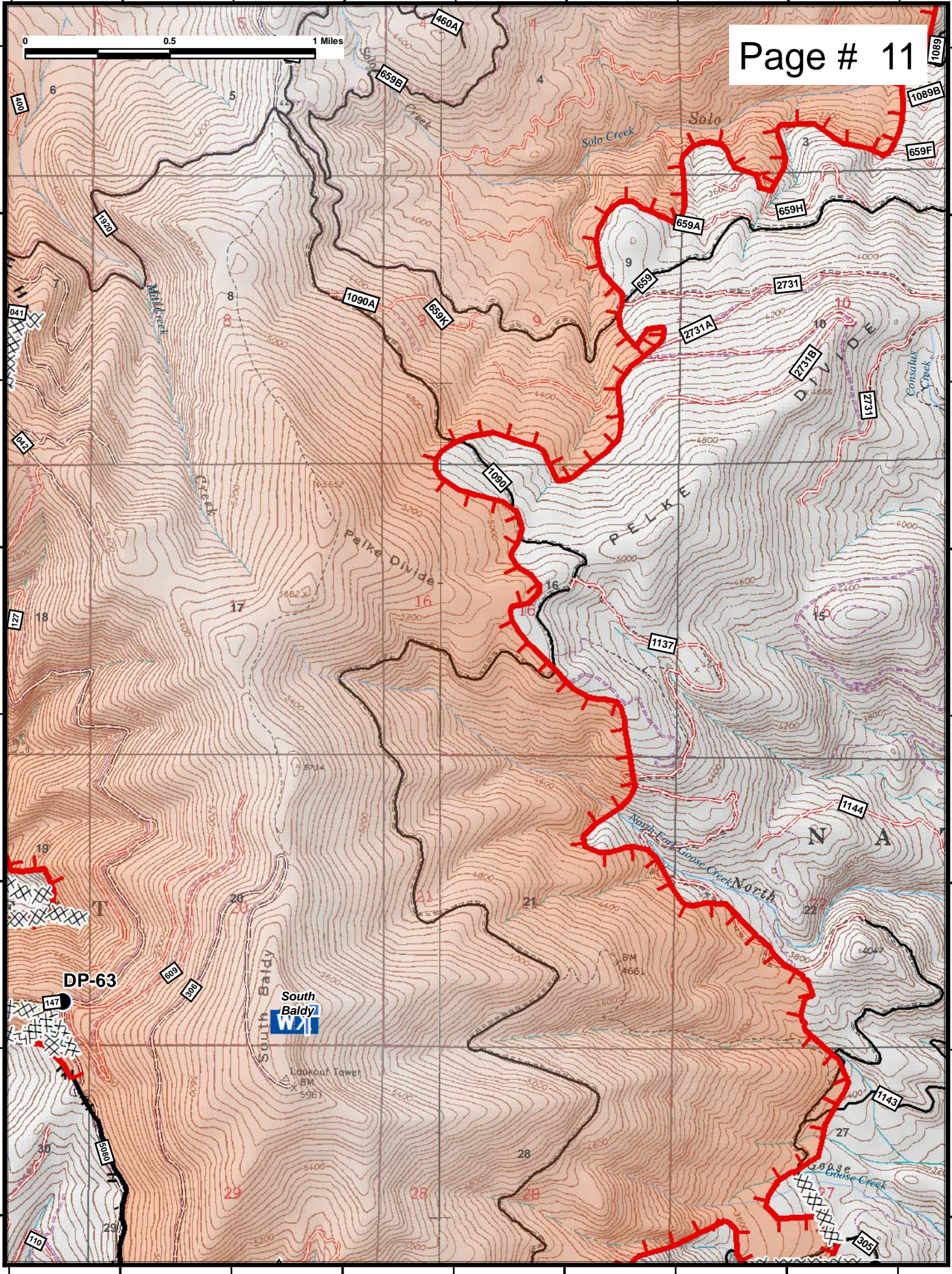
48°25'N

117°9'W

117°8'W

117°7'W

117°6'W



DP-63



Lookout Tower
BM
5961

BM
4661

N A

117°3'W

117°2'W

117°1'W

117°0'W

48°29'N

48°29'N

48°28'N

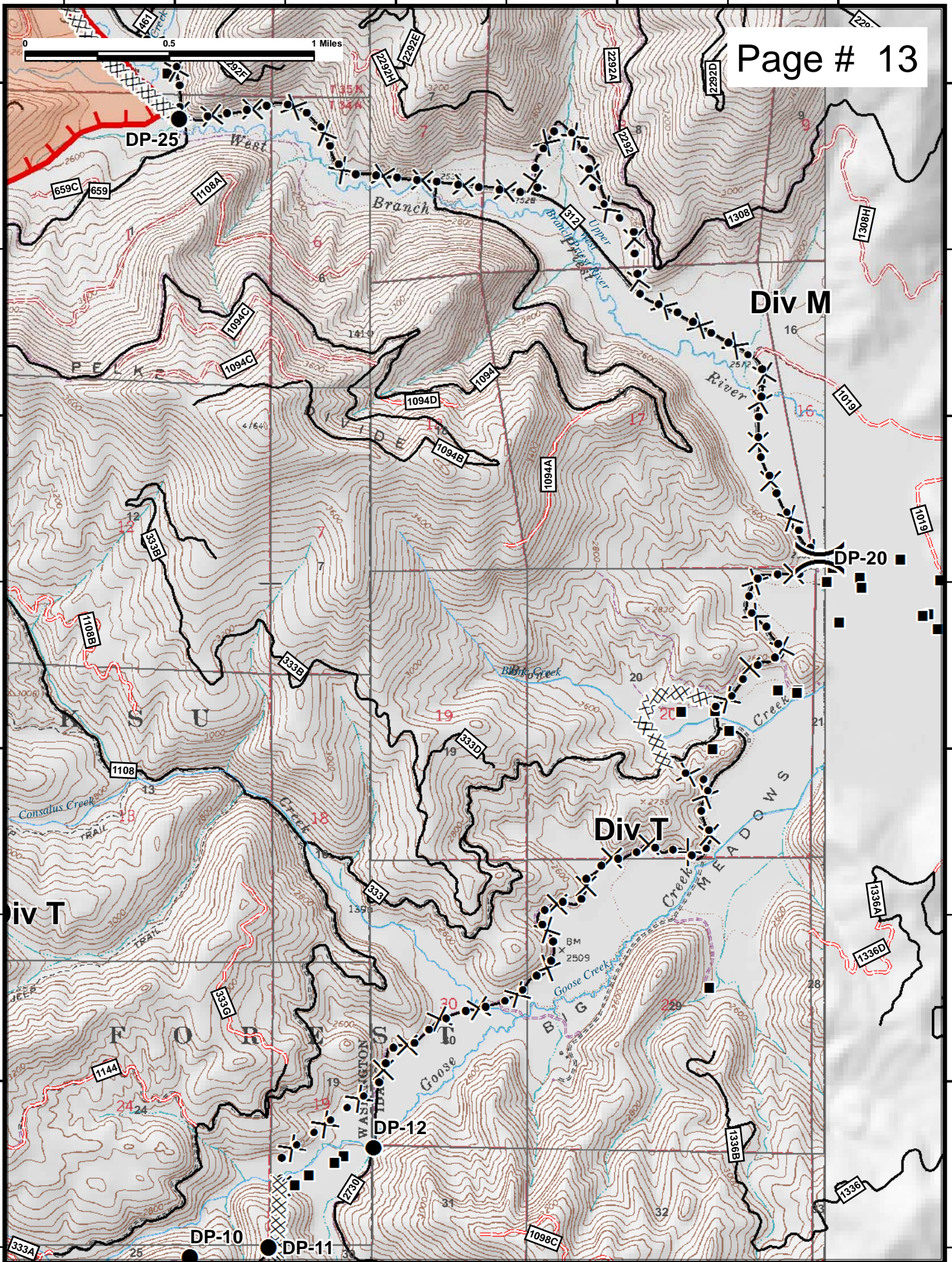
48°28'N

48°27'N

48°27'N

48°26'N

48°26'N



117°3'W

117°2'W

117°1'W

117°0'W

117°11'W

117°10'W

117°9'W

117°8'W

48°26'N

48°26'N

48°25'N

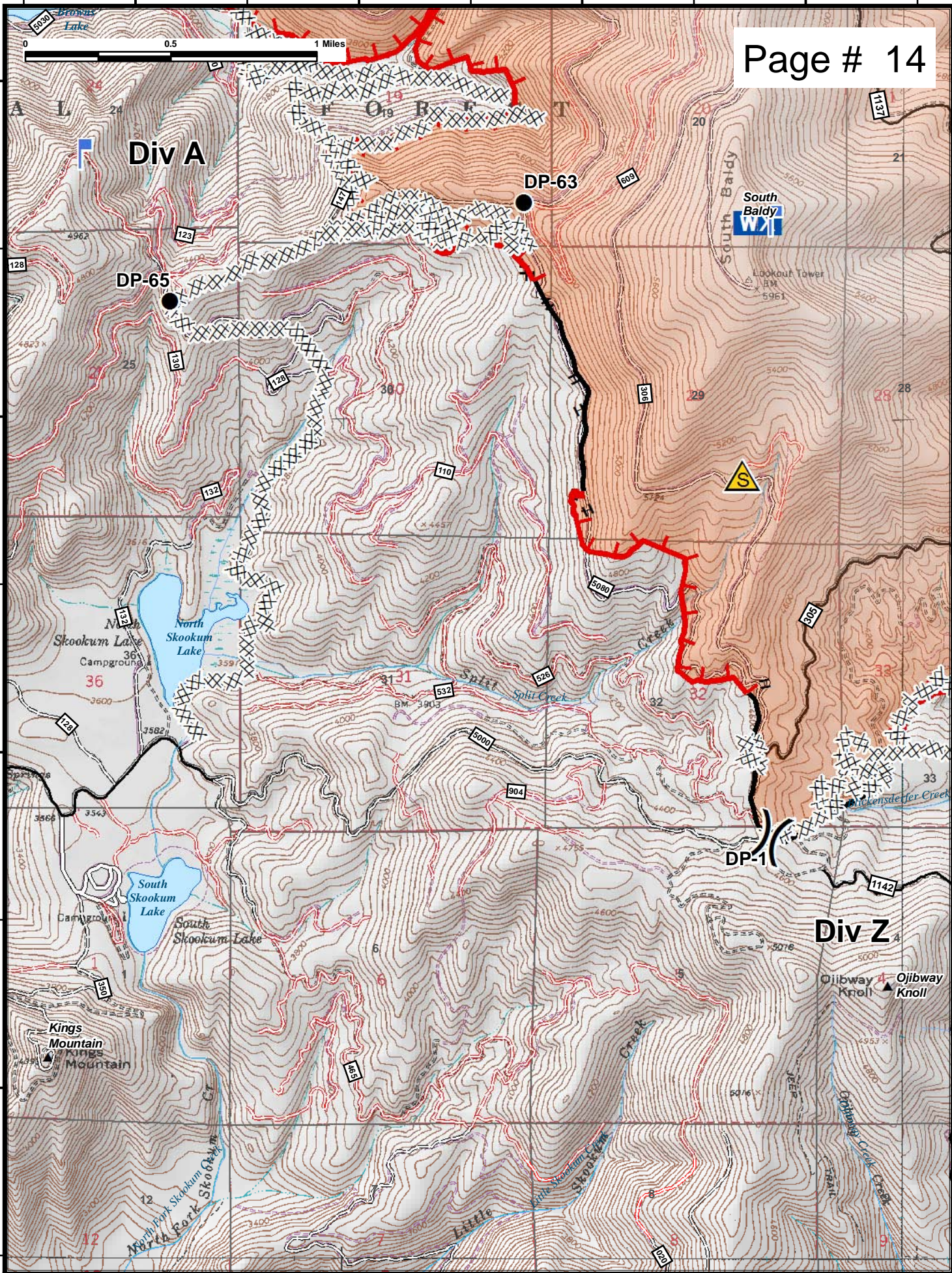
48°25'N

48°24'N

48°24'N

48°23'N

48°23'N



Div A

DP-63

DP-65

South Baldy

North Skookum Lake

South Skookum Lake

Div Z

Ojibway Knoll

Kings Mountain

North Park Skookum Lake

Little Skookum Creek

Skookum Creek

Ojibway Creek

117°8'W

117°7'W

117°6'W

117°5'W

48°26'N

48°26'N

48°25'N

48°25'N

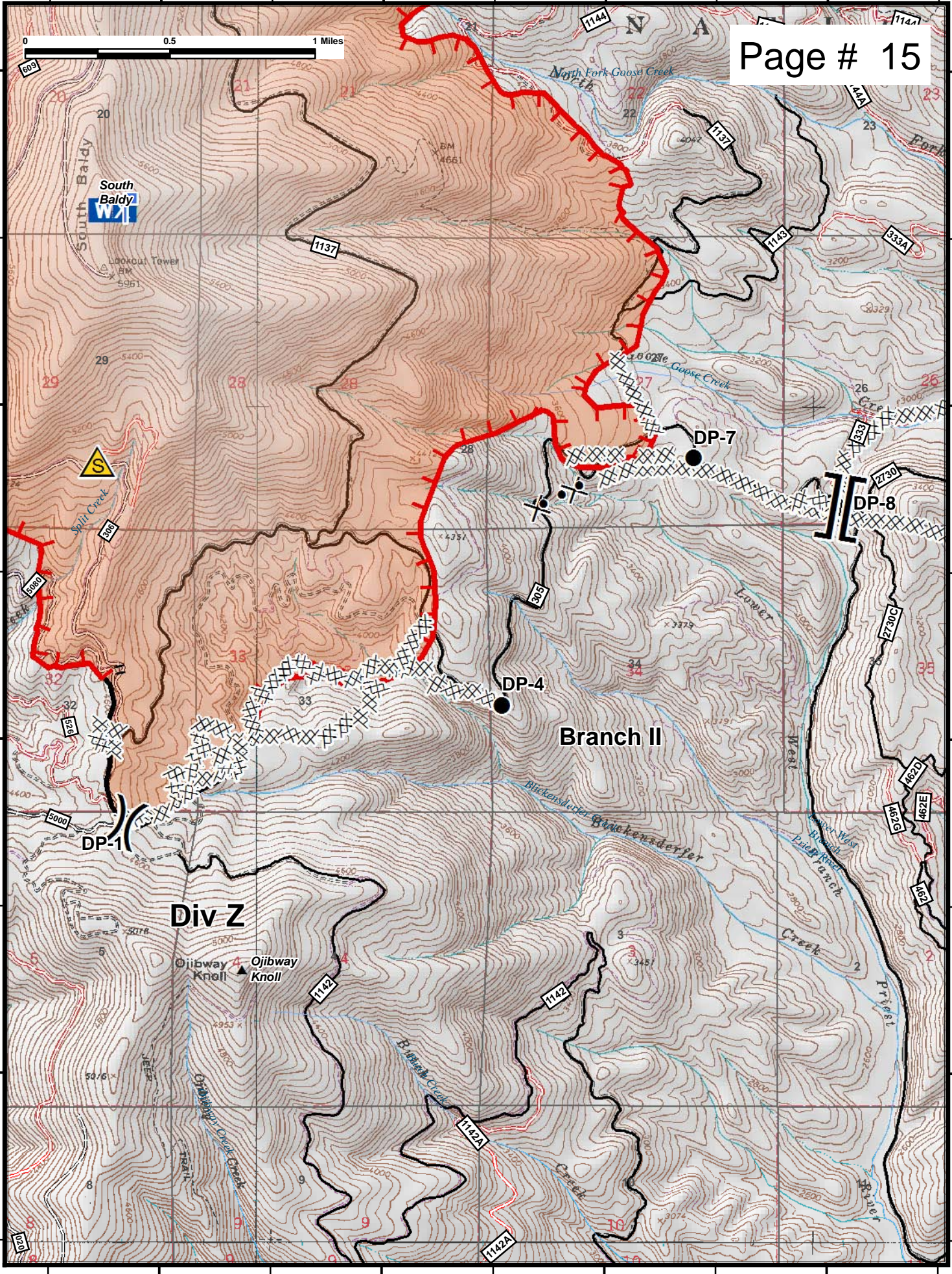
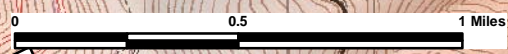
48°24'N

48°24'N

48°23'N

48°23'N

Page # 15



117°8'W

117°7'W

117°6'W

117°5'W

117°5'W

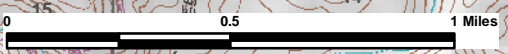
117°4'W

117°3'W

117°2'W

Div T

Branch I



48°26'N

48°26'N

48°25'N

48°25'N

48°24'N

48°24'N

48°23'N

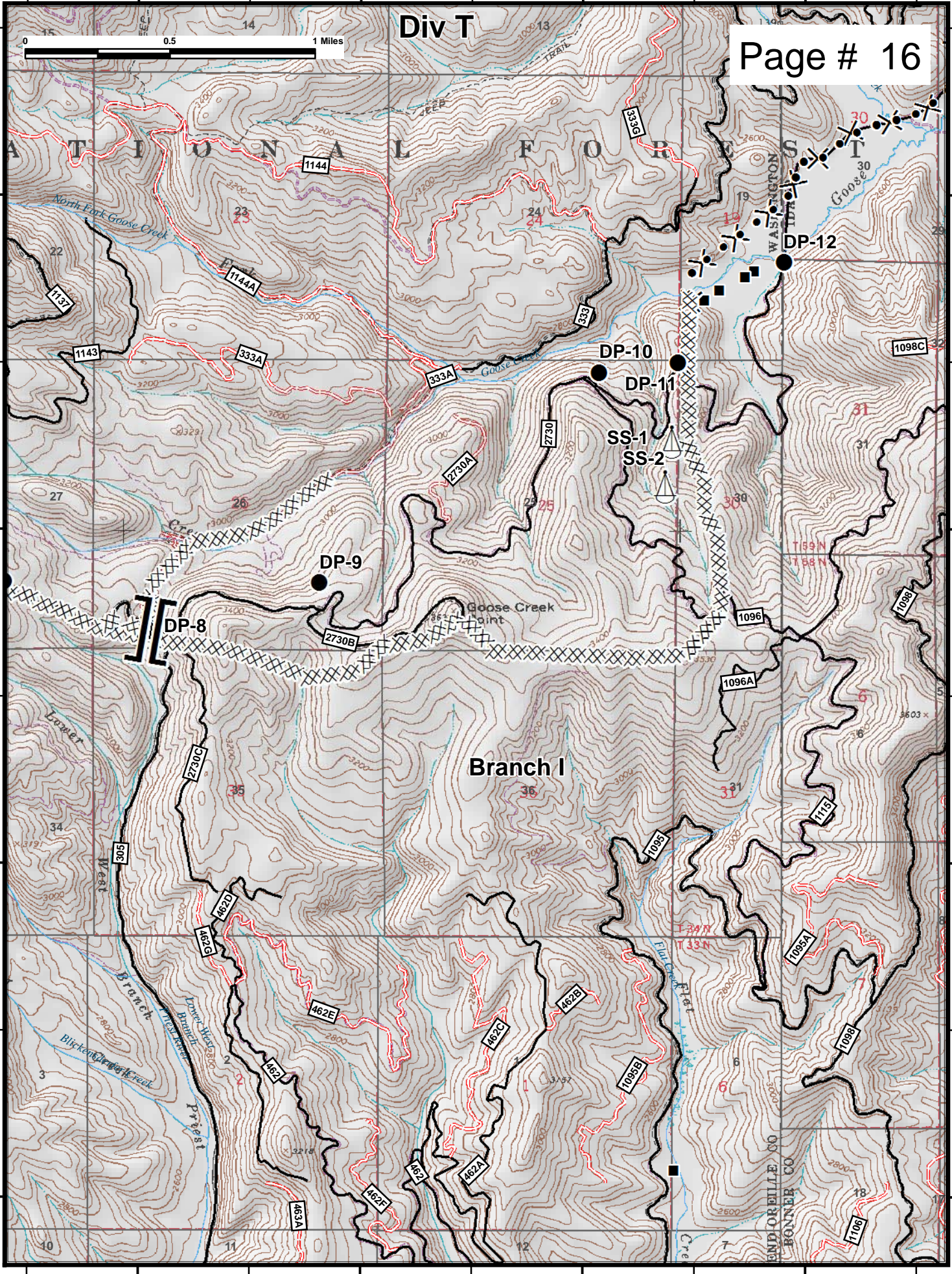
48°23'N

117°5'W

117°4'W

117°3'W

117°2'W

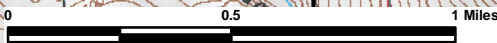


117°15'W

117°14'W

117°13'W

117°12'W



Page # 17

48°45'N

48°45'N

Div Onata

48°44'N

48°44'N

DP-130

DP-120

Onata/Grease Staging

DP-101

DP-110

48°43'N

48°43'N

Branch III

Molybdenite

Mountain

117°15'W

117°14'W

117°13'W

117°12'W

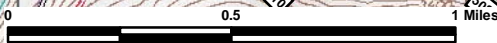
117°14'W

117°13'W

117°12'W

117°11'W

117°10'W



48°49'N

48°49'N

48°48'N

48°48'N

48°47'N

48°47'N

117°14'W

117°13'W

117°12'W

117°11'W

117°10'W

