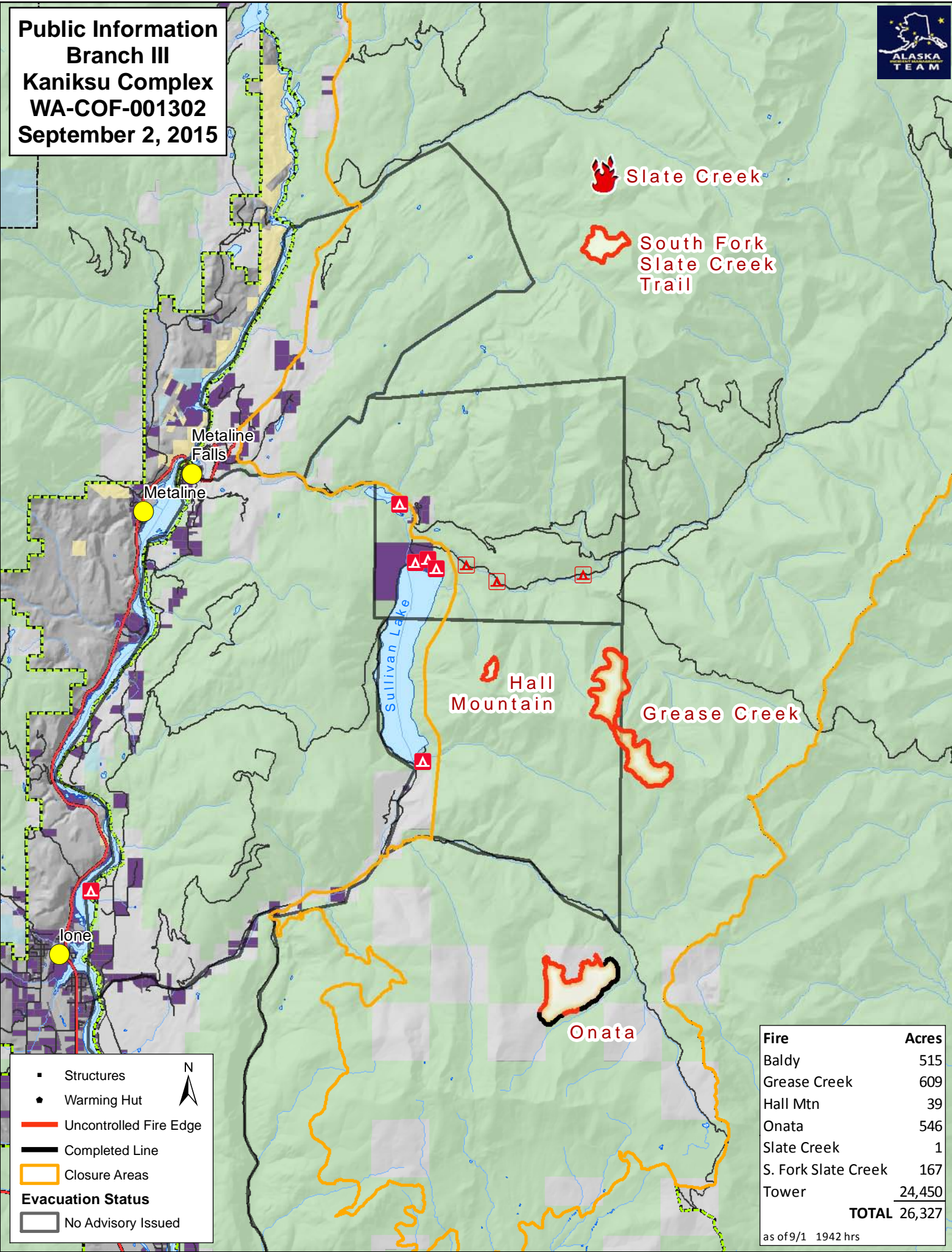


**Public Information
Branch III
Kaniksu Complex
WA-COF-001302
September 2, 2015**



■ Structures
 ● Warming Hut
 Uncontrolled Fire Edge
 Completed Line
 Closure Areas
Evacuation Status
 No Advisory Issued

Fire	Acres
Baldy	515
Grease Creek	609
Hall Mtn	39
Onata	546
Slate Creek	1
S. Fork Slate Creek	167
Tower	24,450
TOTAL	26,327

as of 9/1 1942 hrs