

117°12'W

117°11'W

117°10'W

117°9'W

48°29'N

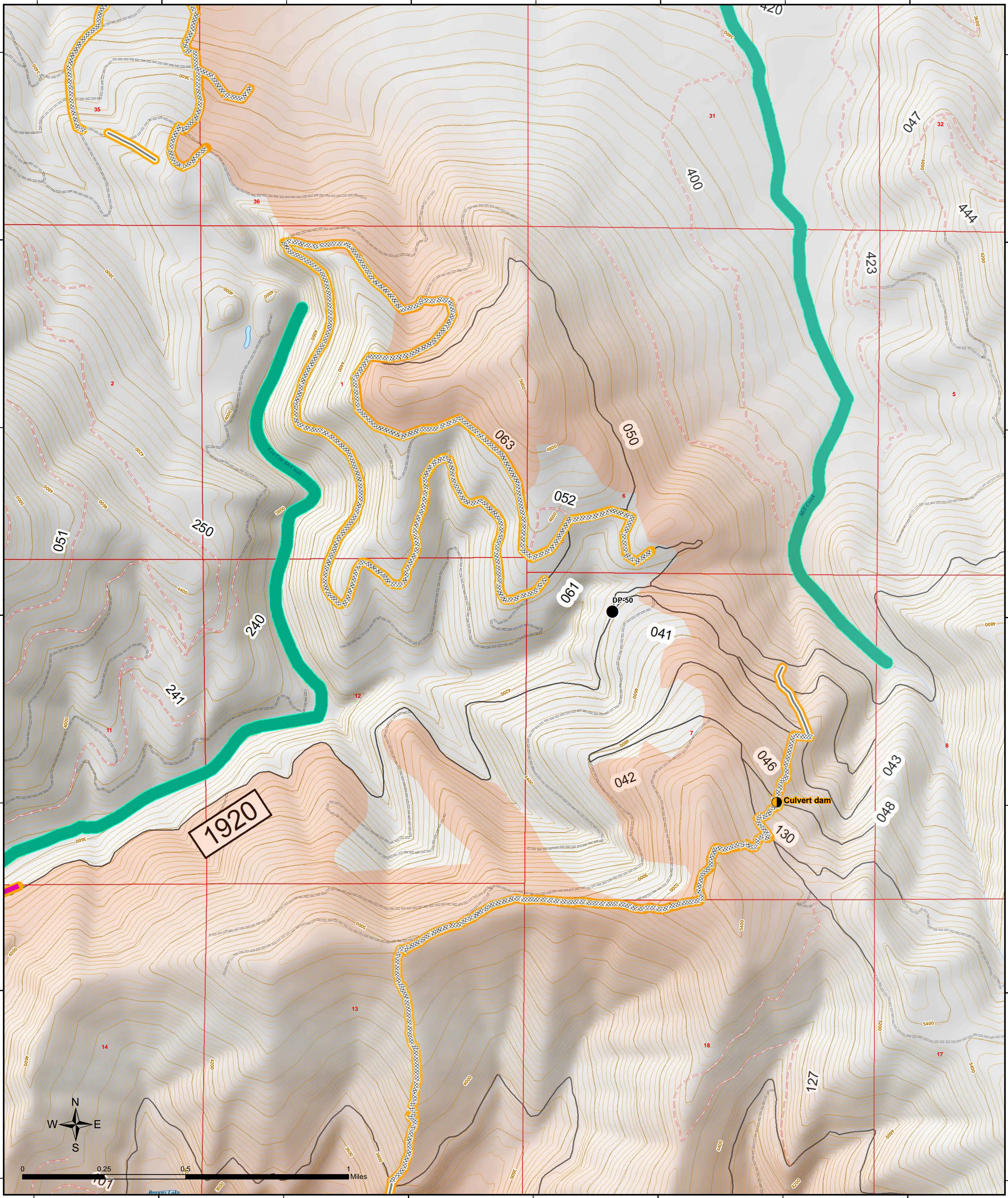
48°28'N

48°27'N

N 82.89

N 82.89

N 12.78



1920

Culvert dam

DP-50



DIV B-2
Suppression Repair
Kaniksu Complex
WA-COF-001302
September 4, 2015
Total Approx. 26,206 acres
As of 9/3/2015 2100 hrs

- | | | | | | | | |
|---|---------------|--------|----------------------|---|---------------|---|---------------|
| ● | Drop Point | XXXXXX | Completed Dozer Line | ● | Repair Status | ● | Repair Needed |
| ● | Repair Points | — | Hand Line | — | — | — | — |
| | | — | Retardant Line | — | — | — | — |
| | | — | Sensitive streams | | | | |

