

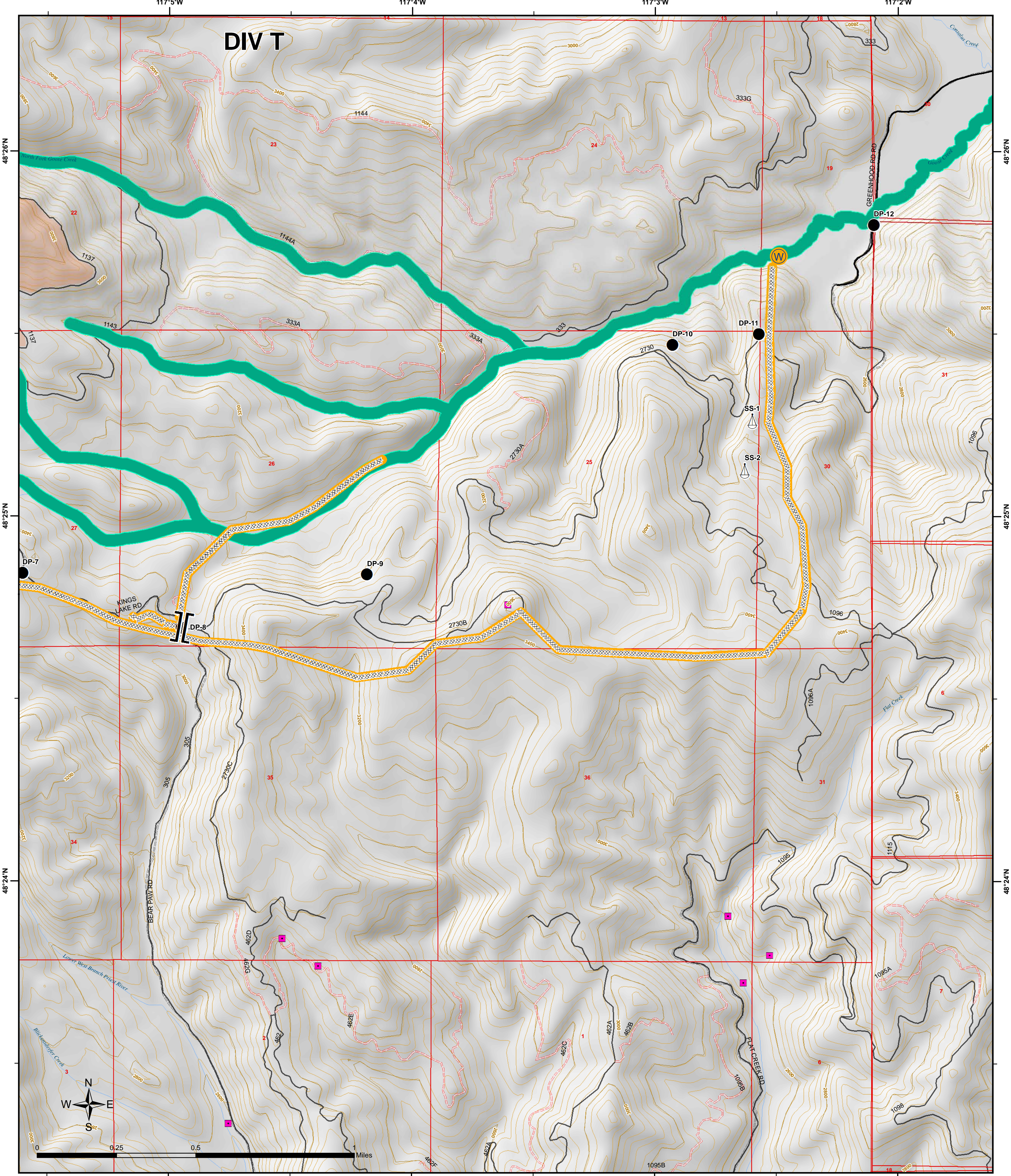
117°5'W

117°4'W

117°3'W

117°2'W

# DIV T



117°5'W

117°4'W

117°3'W

117°2'W

## DIV Z-2

### Suppression Repair

### Kaniksu Complex

### WA-COF-001302

### September 4, 2015

### Total Approx. 26,206 acres

### As of 9/3/2015 2100 hrs



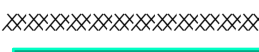
Drop Point



Sling Site



Pumps



Completed Dozer Line  
Sensitive streams

**Repair Status**



Repair Needed

Map Location

