

117°24'W 117°21'W 117°18'W 117°14'W 117°11'W 117°7'W

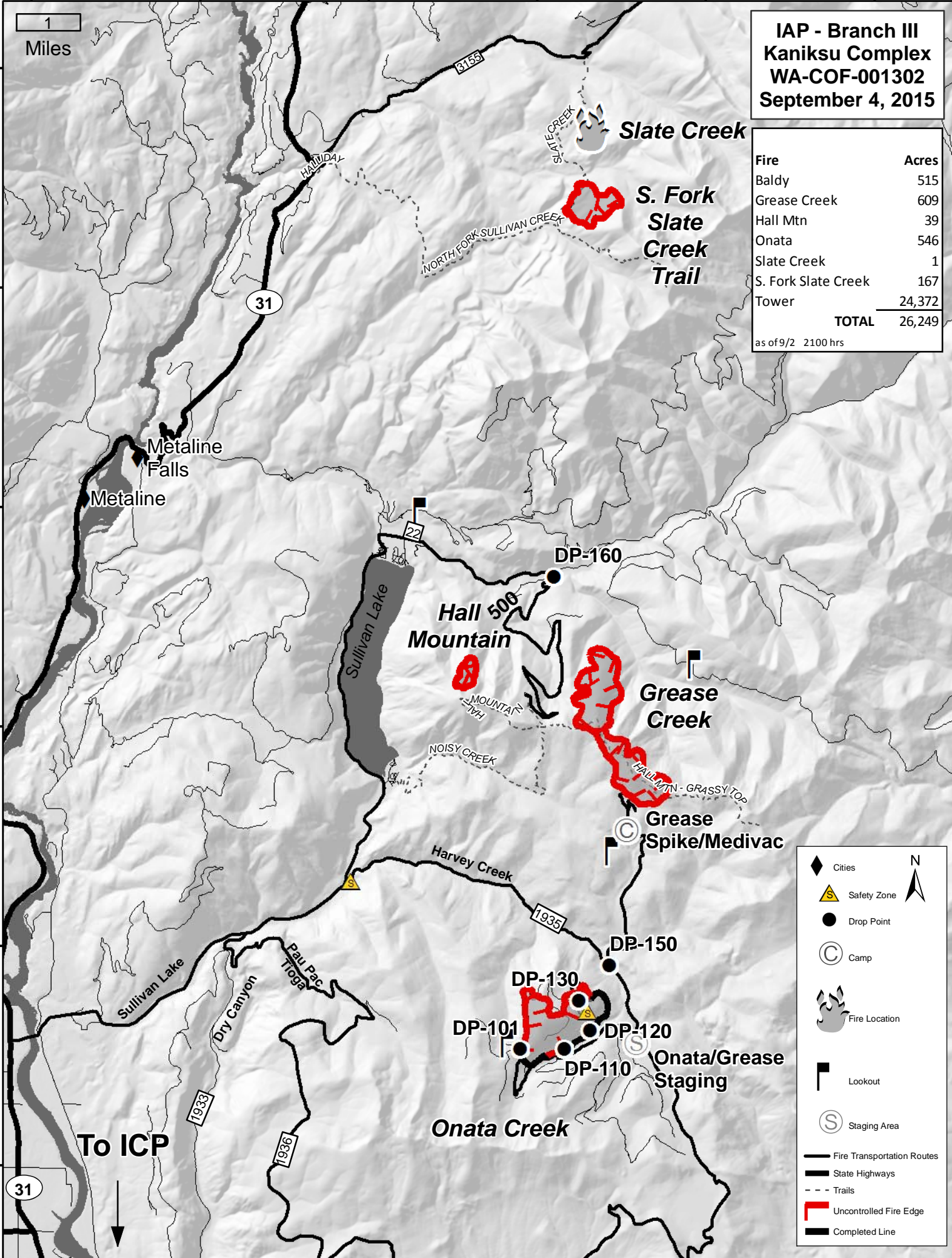
48°57'N
48°54'N
48°51'N
48°48'N
48°45'N
48°42'N

48°57'N
48°54'N
48°51'N
48°48'N
48°45'N
48°42'N

**IAP - Branch III
Kaniksu Complex
WA-COF-001302
September 4, 2015**

Fire	Acres
Baldy	515
Grease Creek	609
Hall Mtn	39
Onata	546
Slate Creek	1
S. Fork Slate Creek	167
Tower	24,372
TOTAL	26,249

as of 9/2 2100 hrs



1 Miles

31

To ICP

- Cities
- Safety Zone
- Drop Point
- Camp
- Fire Location
- Lookout
- Staging Area
- Fire Transportation Routes
- State Highways
- Trails
- Uncontrolled Fire Edge
- Completed Line

117°24'W 117°21'W 117°18'W 117°14'W 117°11'W 117°7'W