

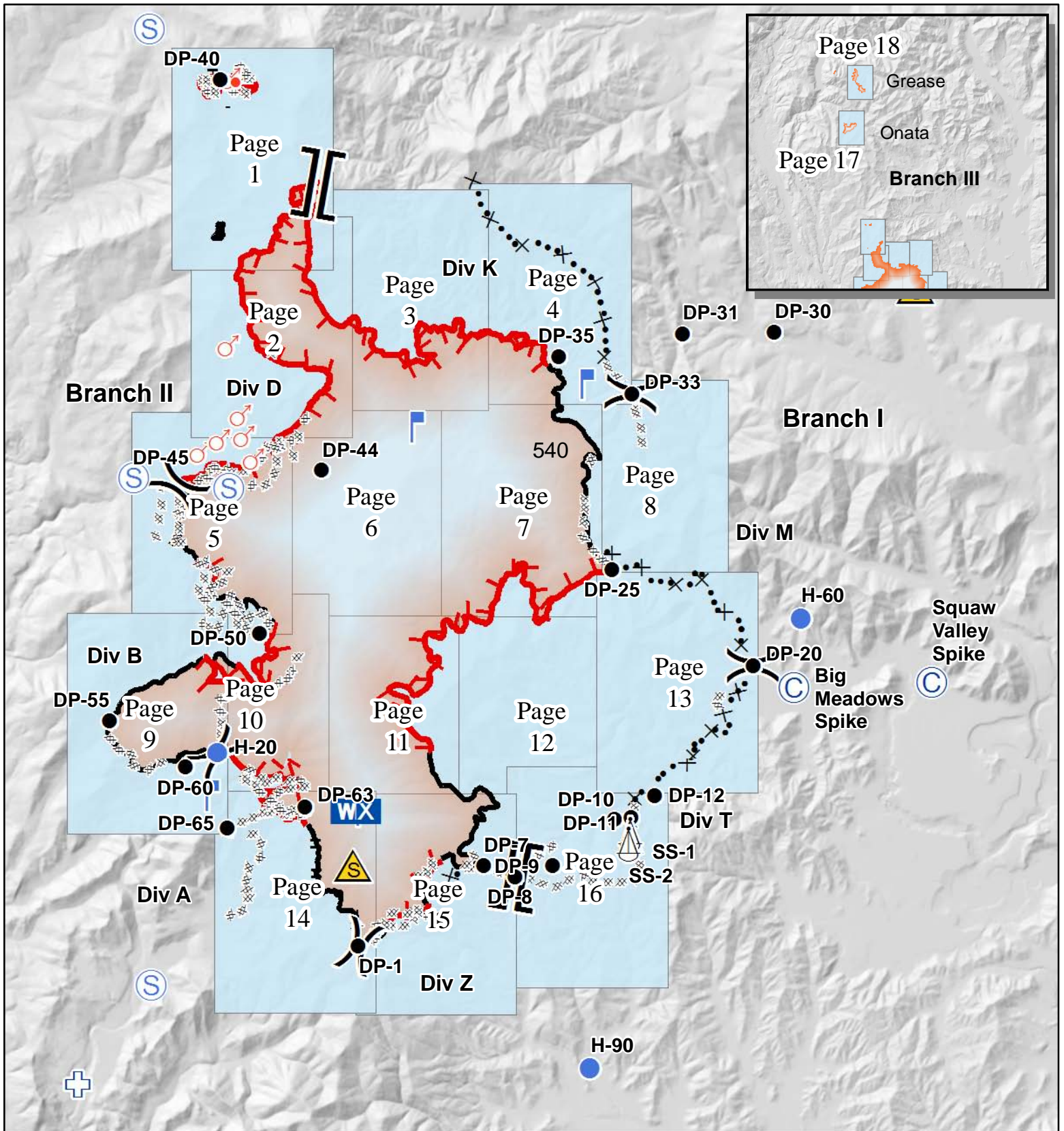
Kaniksu Complex WA-COF-001302 IAP Maps September 5, 2015

Fire	Acres
Baldy	515
Grease Creek	611
Hall Mtn	39
Onata	546
Slate Creek	1
S. Fork Slate Creek	167
Tower	24,296
TOTAL	26,175

as of 9/4 2200 hrs

	Hot Spot		Safety Zone		Uncontrolled Fire Edge
	Sling Site		Spot Fire		Completed Dozer Line
	Camp		Staging Area		Hand Line
	Drop Point		First Aid Station		Proposed Dozer Line
	Lookout		Structures		Closed Roads
			Warming Hut		

N

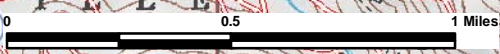


117°12'W

117°11'W

117°10'W

117°9'W



48°36'N

48°36'N

48°35'N

48°35'N

48°34'N

48°34'N

48°33'N

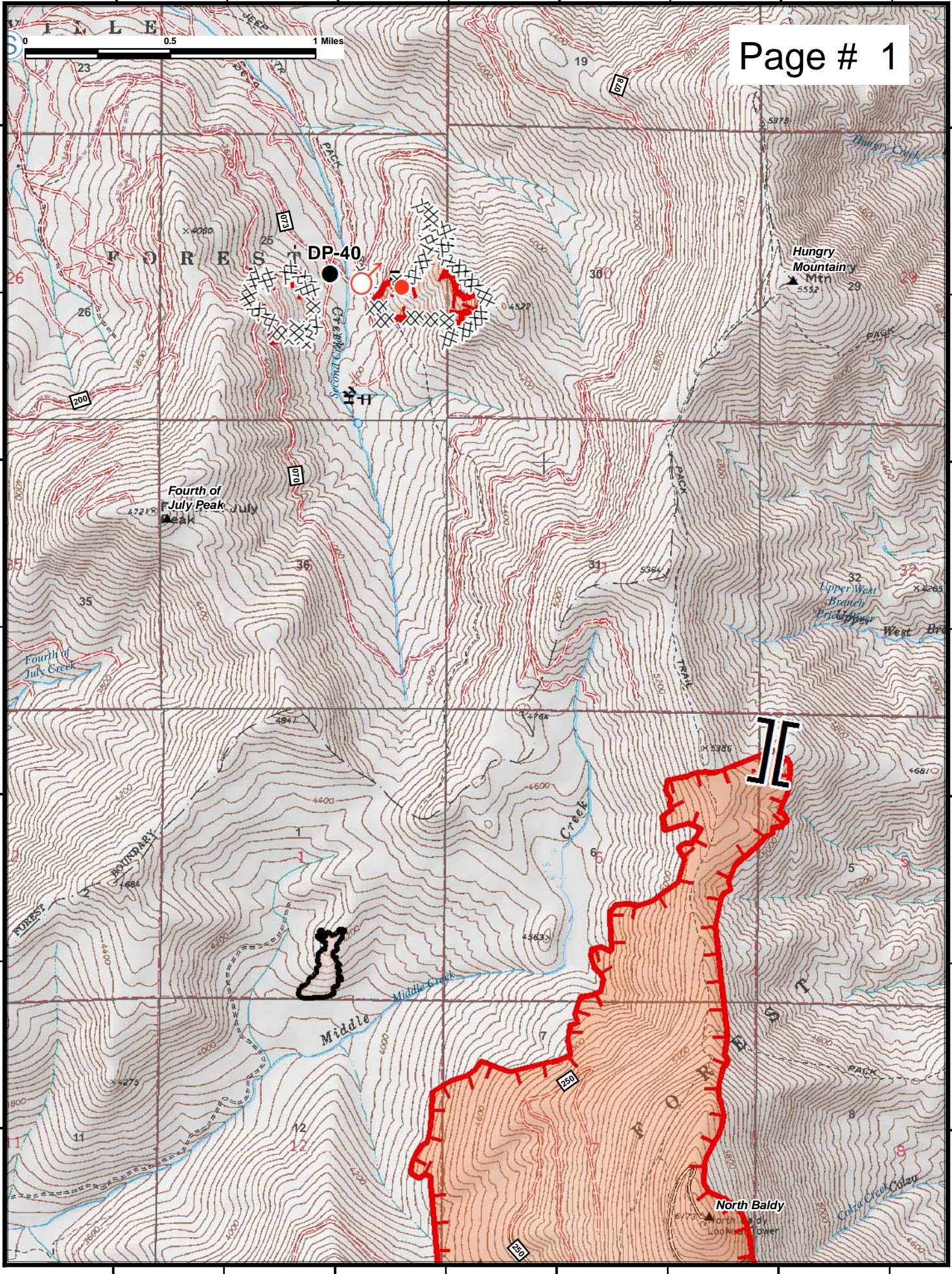
48°33'N

117°12'W

117°11'W

117°10'W

117°9'W

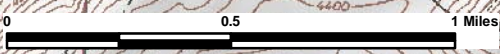


117°12'W 117°11'W 117°10'W 117°9'W 117°8'W

48°34'N

48°34'N

Page # 2



48°33'N

48°33'N

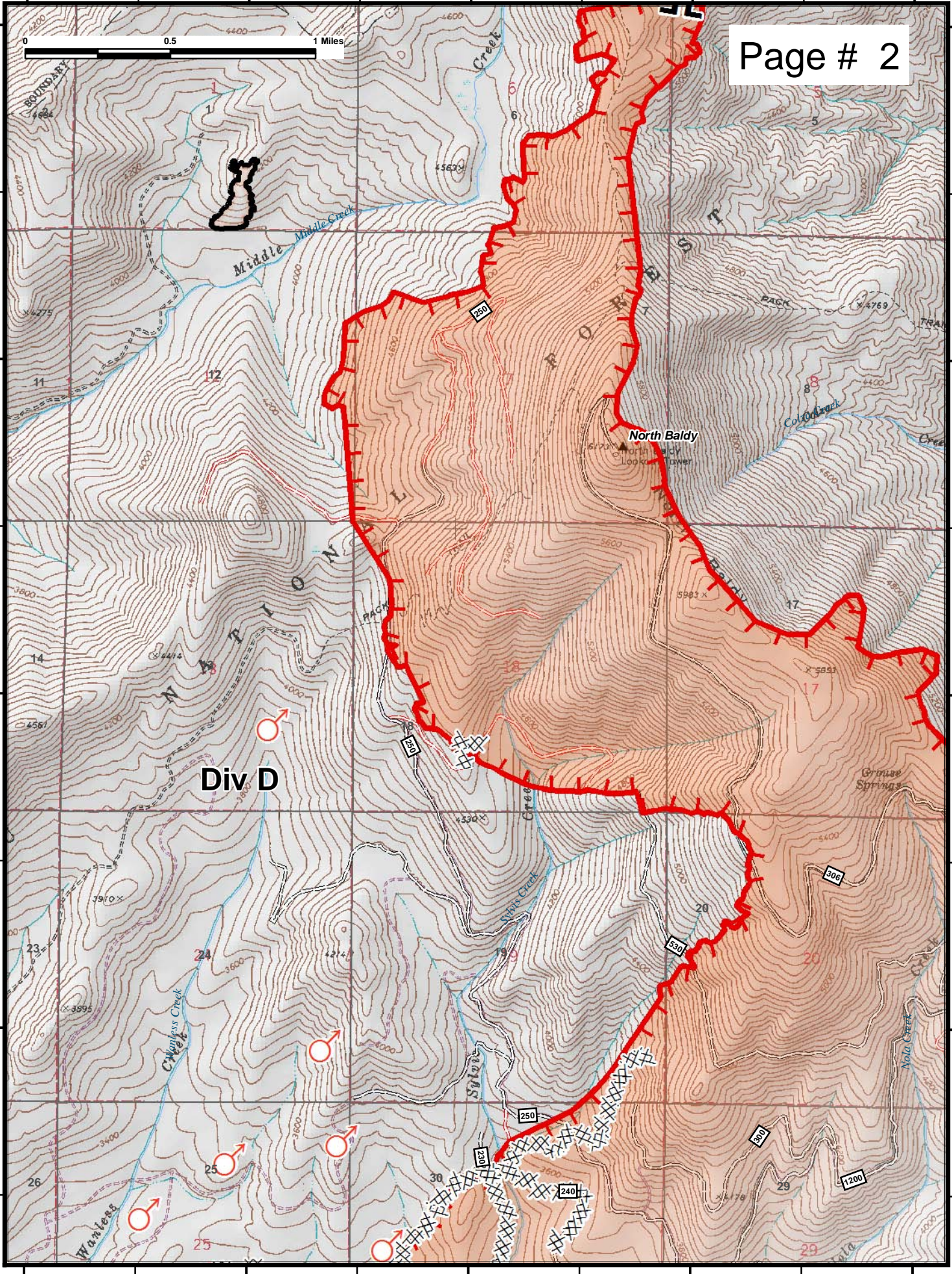
48°32'N

48°32'N

48°31'N

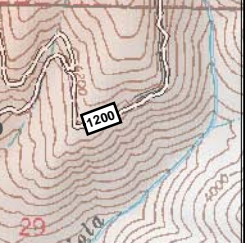
48°31'N

117°12'W 117°11'W 117°10'W 117°9'W 117°8'W



Div D

North Baldy

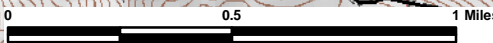


117°6'W

117°5'W

117°4'W

117°3'W



Page # 4

48°34'N

48°34'N

48°33'N

48°33'N

48°32'N

48°32'N

48°31'N

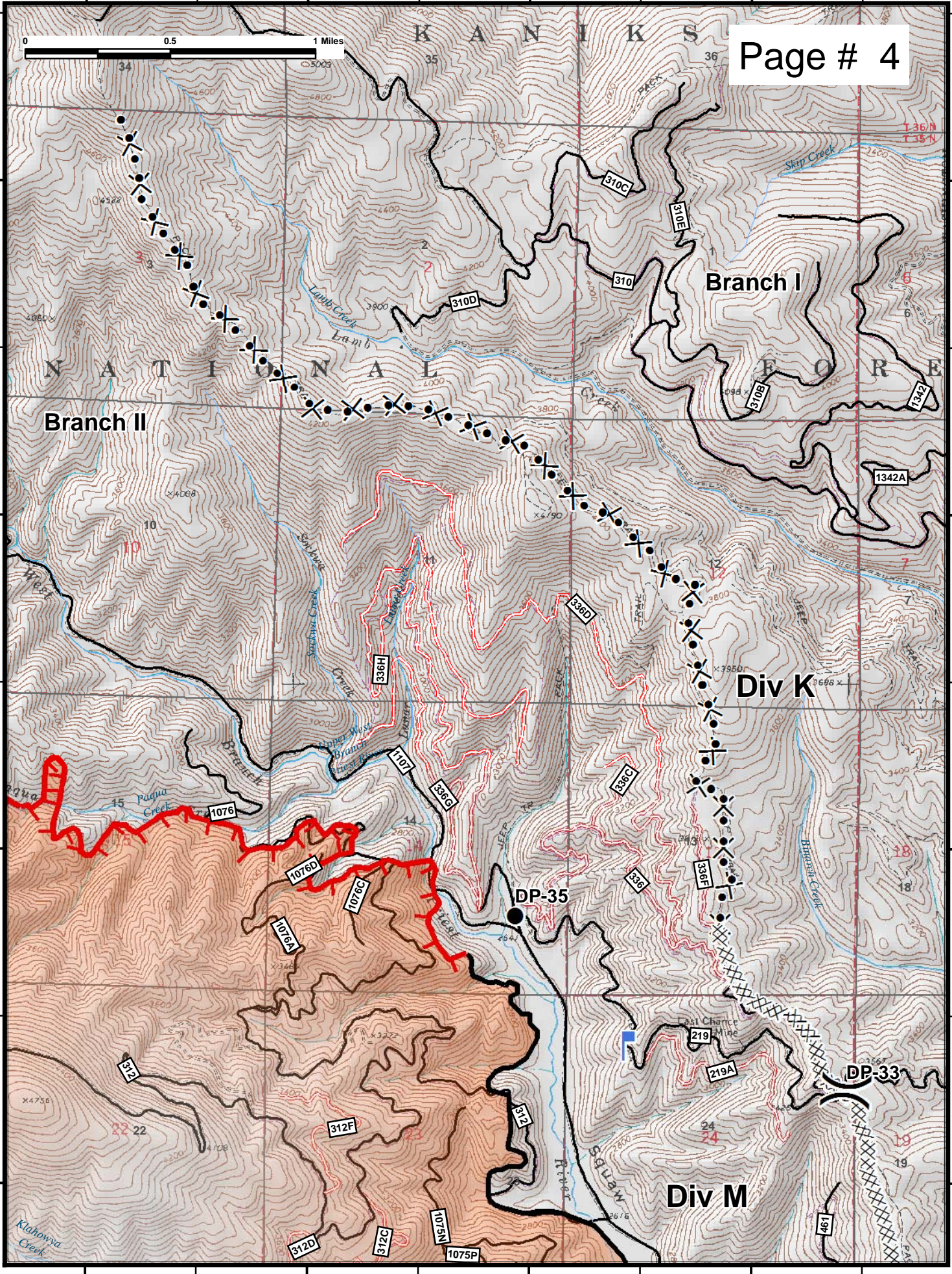
48°31'N

117°6'W

117°5'W

117°4'W

117°3'W



117°13'W

117°12'W

117°11'W

117°10'W

Page # 5

48°31'N

48°31'N

48°30'N

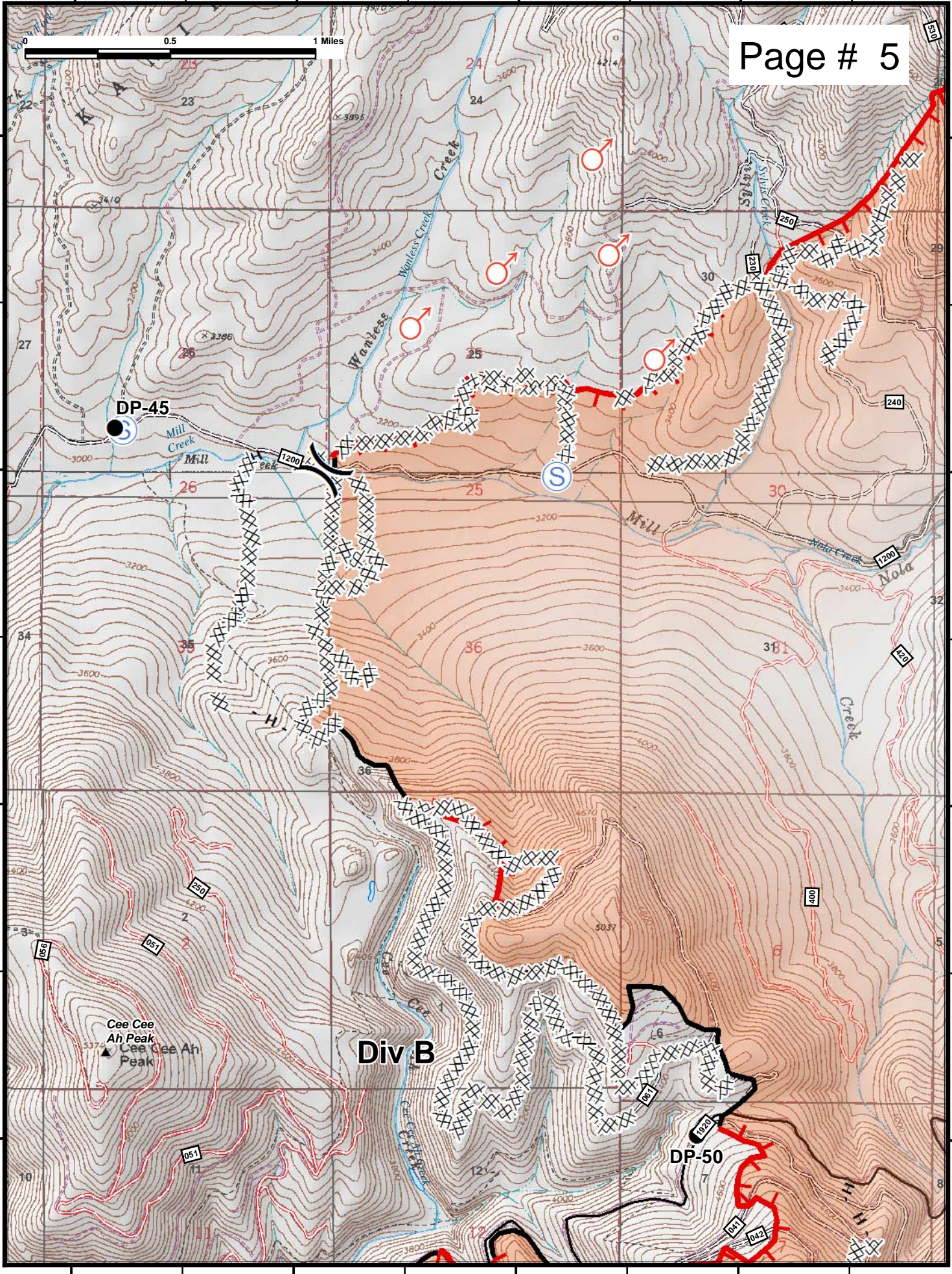
48°30'N

48°29'N

48°29'N

48°28'N

48°28'N



117°13'W

117°12'W

117°11'W

117°10'W

117°10'W

117°9'W

117°8'W

117°7'W

117°6'W

48°31'N

48°31'N

48°30'N

48°30'N

48°29'N

48°29'N

48°28'N

48°28'N

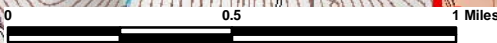
117°10'W

117°9'W

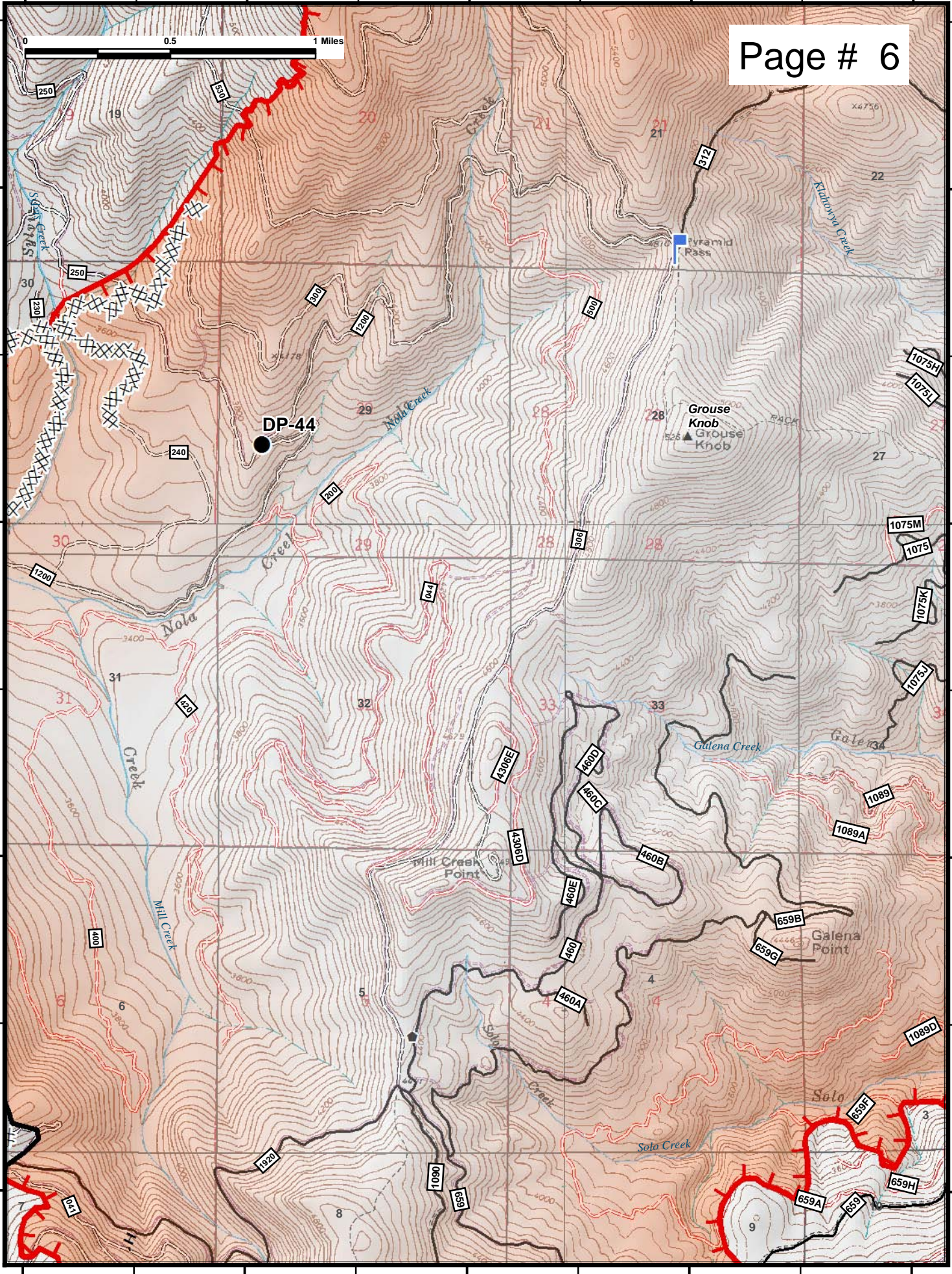
117°8'W

117°7'W

117°6'W



Page # 6



DP-44

Grouse Knob
Grouse Knob

Mill Creek Point

Galena Point

Soto Creek

Galena Creek

Nola Creek

Mill Creek

Soto Creek

Klahovy Creek

Pyramid Pass

250

19

500

20

21

21

21

22

22

22

22

250

30

500

20

21

21

21

22

22

22

22

250

30

500

29

28

28

28

28

28

28

28

200

30

500

29

28

28

28

28

28

28

28

200

31

500

31

32

32

32

32

32

32

32

100

6

500

6

5

5

5

5

5

5

5

100

6

500

6

5

5

5

5

5

5

5

100

6

500

6

5

5

5

5

5

5

5

100

6

500

6

5

5

5

5

5

5

5

100

6

500

6

5

5

5

5

5

5

5

100

6

500

6

5

5

5

5

5

5

5

100

6

500

6

5

5

5

5

5

5

5

100

6

500

6

5

5

5

5

5

5

5

100

6

500

6

5

5

5

5

5

5

5

100

6

500

6

5

5

5

5

5

5

5

100

6

500

6

5

5

5

5

5

5

5

100

6

500

6

5

5

5

5

5

5

5

100

6

500

6

5

5

5

5

5

5

5

100

6

500

6

5

5

5

5

5

5

5

100

6

500

6

5

5

5

5

5

5

5

100

6

500

6

5

5

5

5

5

5

5

100

6

500

6

5

5

5

5

5

5

5

100

6

500

6

5

5

5

5

5

5

5

100

6

500

6

5

5

5

5

5

5

5

100

6

500

6

5

5

5

5

5

5

5

100

6

500

6

5

5

5

5

5

5

5

100

6

500

6

5

5

5

5

5

5

117°4'W

117°3'W

117°2'W

117°1'W

48°31'N

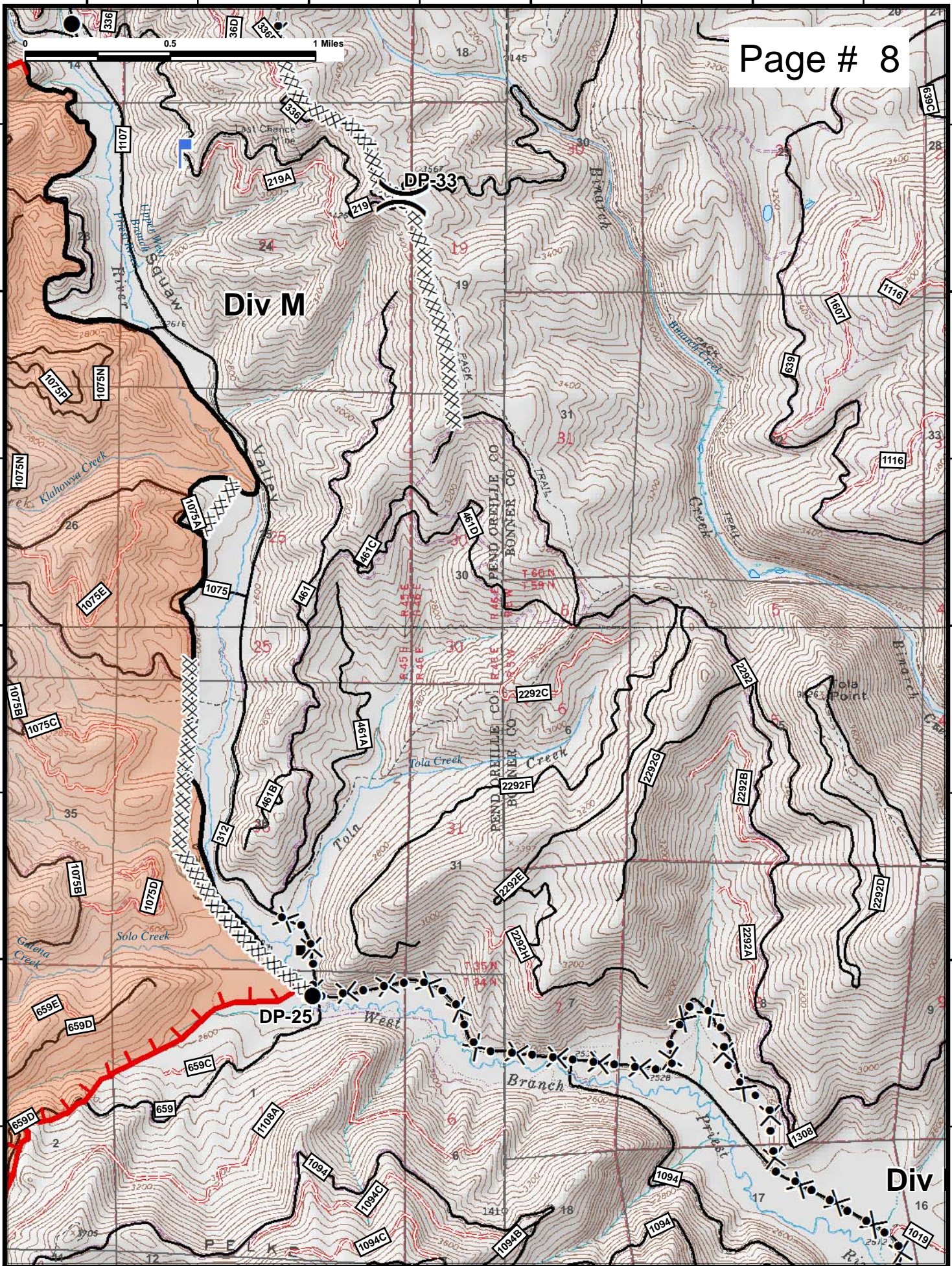
48°31'N

48°30'N

48°30'N

48°29'N

48°29'N



117°4'W

117°3'W

117°2'W

117°1'W

117°14'W

117°13'W

117°12'W

117°11'W

Div B

Div A

DP-55

DP-60

H-20

DP-65

Cee Cee Ah Peak
▲ Cee Cee Ah Peak

Browns Lake

NATIONAL

KANIKS



48°28'N
48°27'N
48°26'N
48°25'N

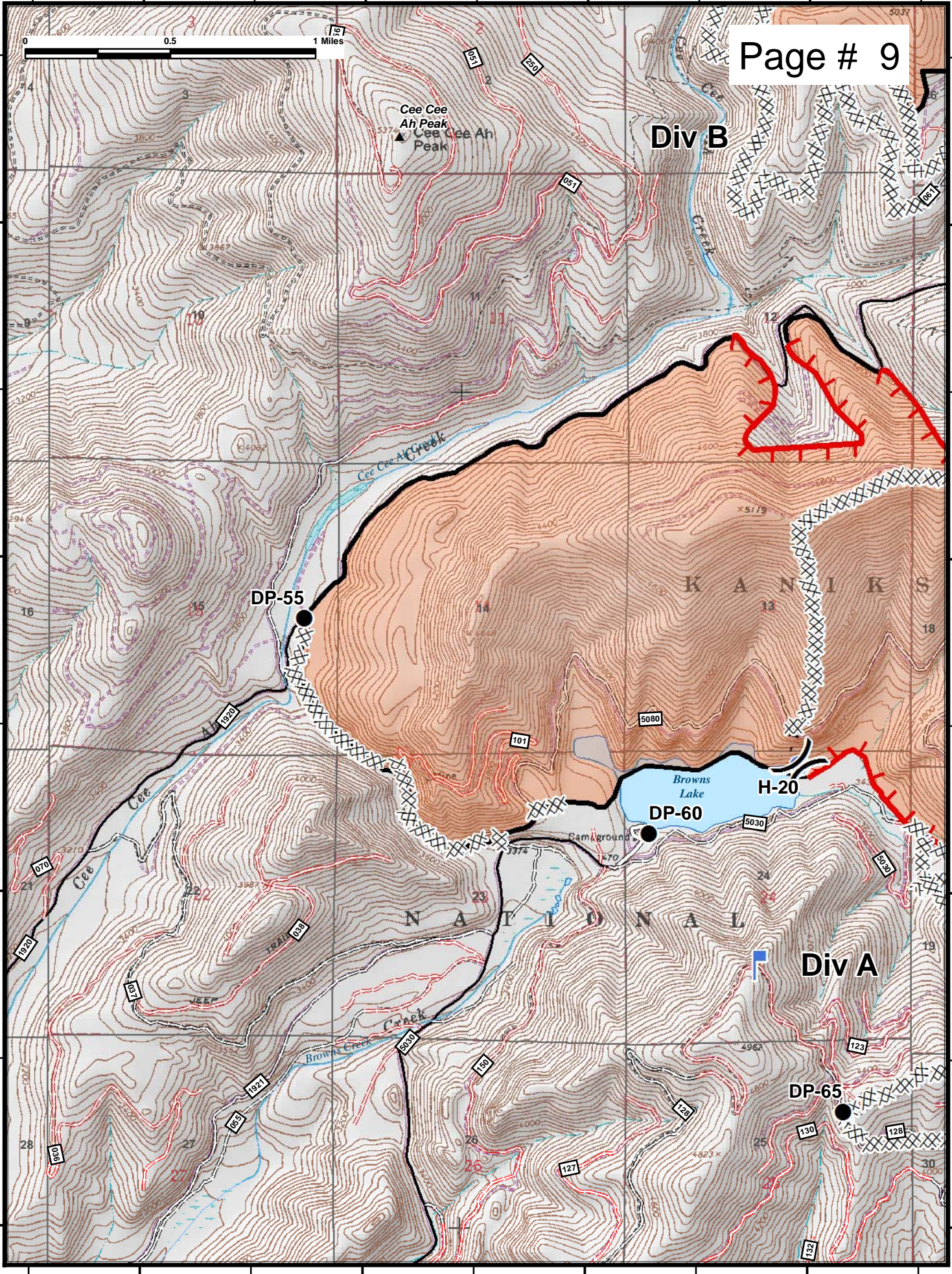
48°28'N
48°27'N
48°26'N
48°25'N

117°14'W

117°13'W

117°12'W

117°11'W

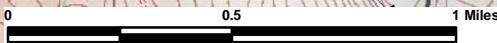


117°9'W

117°8'W

117°7'W

117°6'W



Page # 11

48°28'N

48°28'N

48°27'N

48°27'N

48°26'N

48°26'N

48°25'N

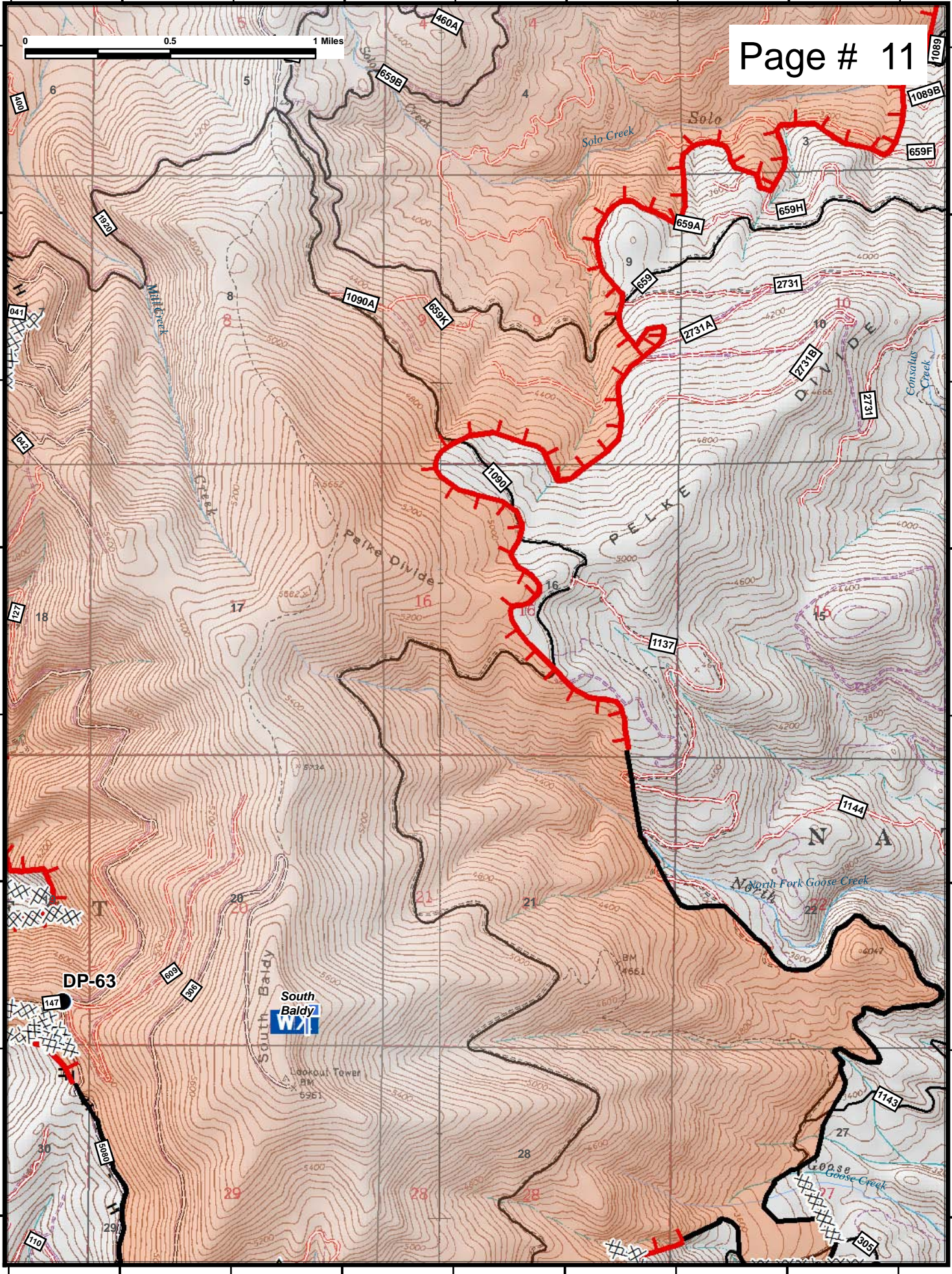
48°25'N

117°9'W

117°8'W

117°7'W

117°6'W

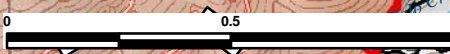


117°6'W

117°5'W

117°4'W

117°3'W



48°28'N

48°28'N

48°27'N

48°27'N

48°26'N

48°26'N

48°25'N

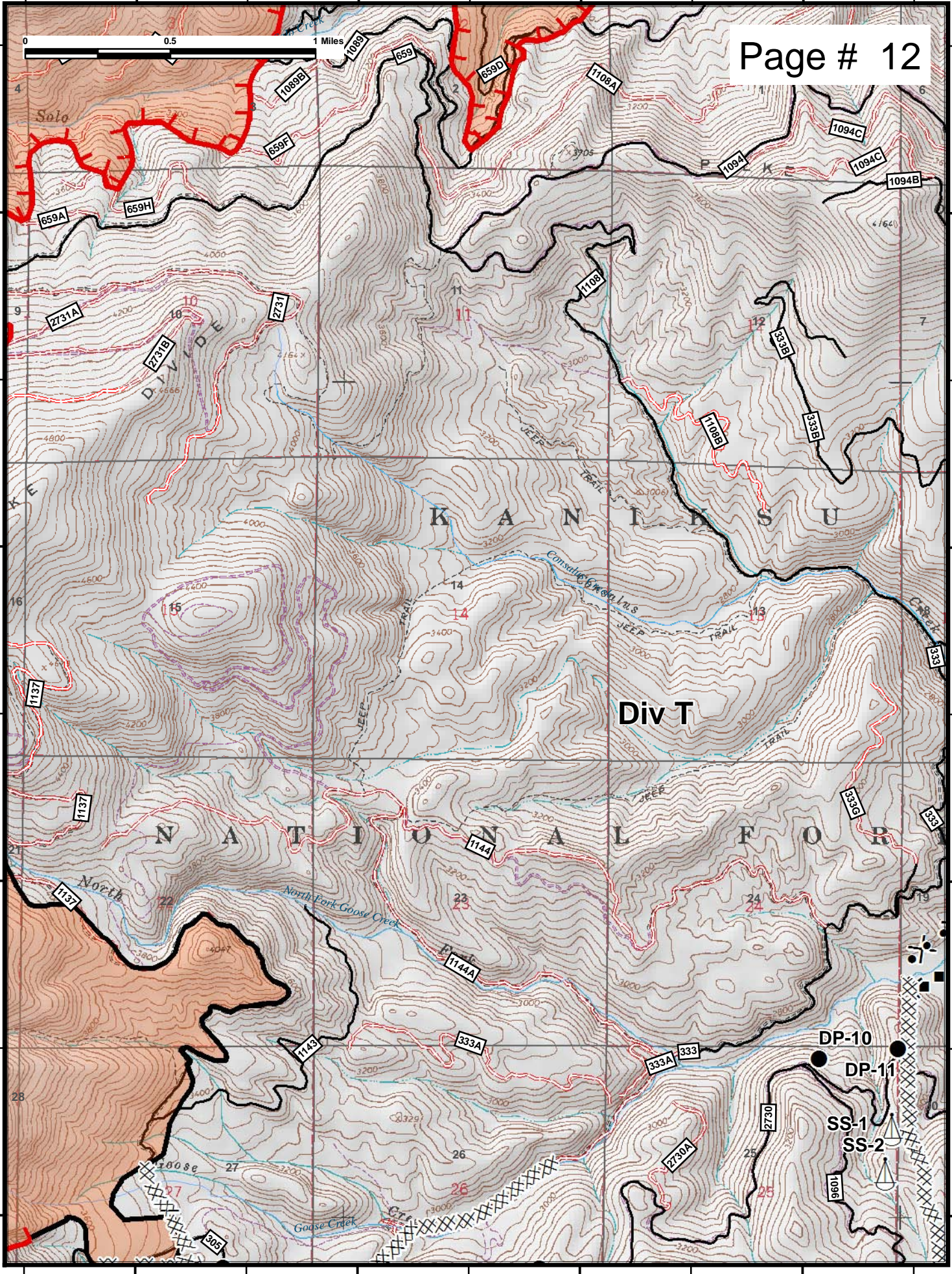
48°25'N

117°6'W

117°5'W

117°4'W

117°3'W



117°3'W

117°2'W

117°1'W

117°0'W

48°29'N

48°29'N

48°28'N

48°28'N

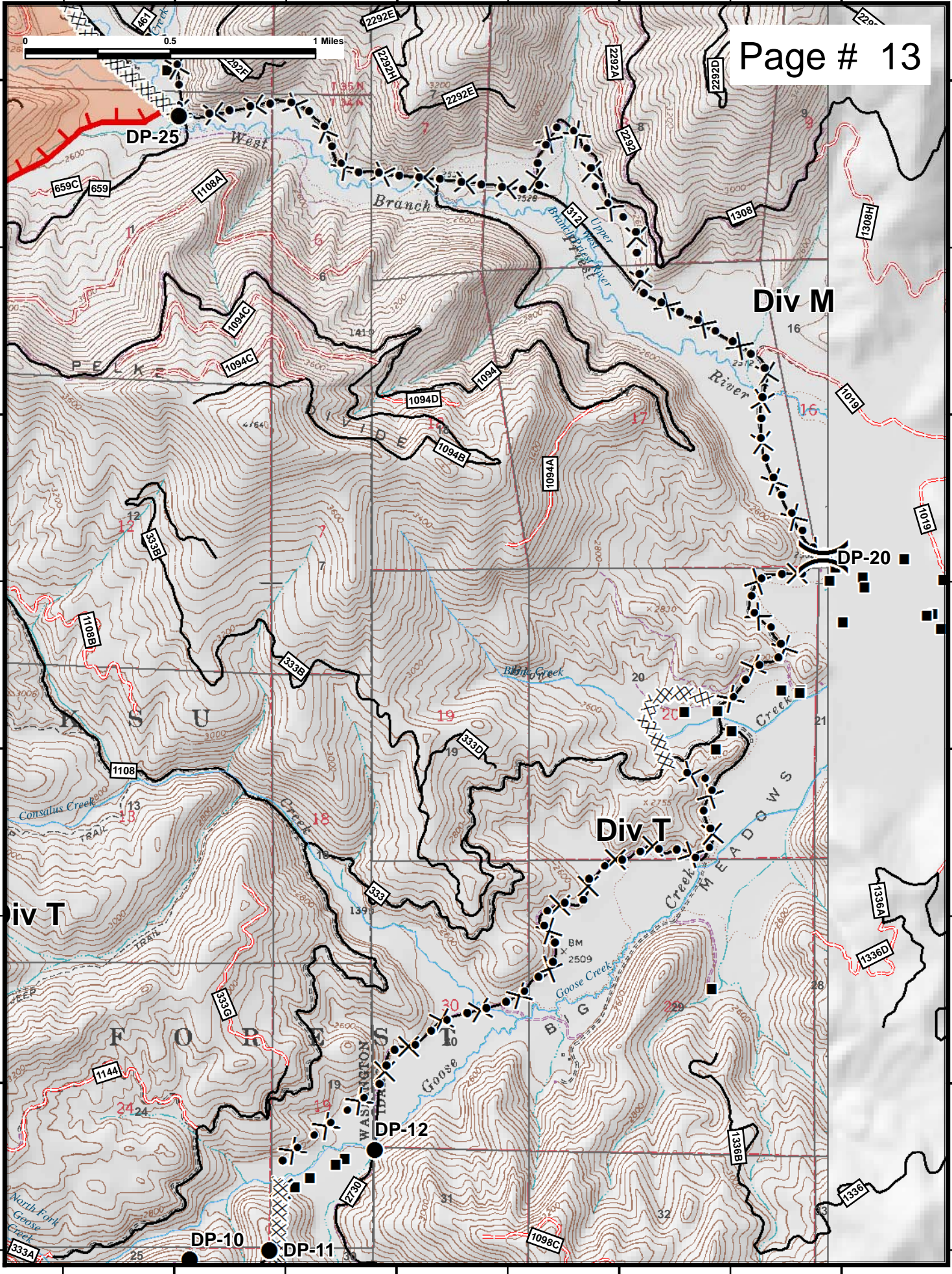
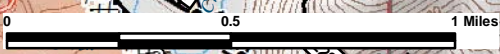
48°27'N

48°27'N

48°26'N

48°26'N

Page # 13



DP-25

DP-20

DP-12

DP-10

DP-11

Div M

Div T

Div T

659C

1108A

1094C

1094C

1094D

1094

1094B

1094A

332B

1108B

333B

1108

333D

333

333G

1144

2730

30

1336B

1336A

1336D

1336E

1098C

1336

West

Branch

Upper

River

Blaine

Creek

Creek

WADWAS

Goose

North Fork

Creek

WASHINGTON

PELKS

VIDE

TRAIL

TRAIL

TRAIL

TRAIL

TRAIL

TRAIL

TRAIL

TRAIL

TRAIL

TRAIL

TRAIL

TRAIL

TRAIL

TRAIL

TRAIL

TRAIL

TRAIL

TRAIL

TRAIL

TRAIL

TRAIL

TRAIL

TRAIL

TRAIL

TRAIL

TRAIL

TRAIL

TRAIL

TRAIL

TRAIL

TRAIL

TRAIL

TRAIL

TRAIL

TRAIL

TRAIL

TRAIL

TRAIL

TRAIL

TRAIL

TRAIL

TRAIL

TRAIL

TRAIL

TRAIL

TRAIL

TRAIL

TRAIL

TRAIL

TRAIL

TRAIL

TRAIL

TRAIL

TRAIL

TRAIL

TRAIL

TRAIL

TRAIL

TRAIL

TRAIL

TRAIL

TRAIL

TRAIL

TRAIL

TRAIL

TRAIL

TRAIL

TRAIL

TRAIL

TRAIL

TRAIL

TRAIL

TRAIL

TRAIL

TRAIL

TRAIL

TRAIL

TRAIL

TRAIL

TRAIL

TRAIL

TRAIL

TRAIL

TRAIL

TRAIL

TRAIL

TRAIL

TRAIL

TRAIL

TRAIL

TRAIL

TRAIL

TRAIL

TRAIL

TRAIL

TRAIL

TRAIL

TRAIL

TRAIL

TRAIL

TRAIL

TRAIL

TRAIL

TRAIL

TRAIL

TRAIL

TRAIL

TRAIL

TRAIL

TRAIL

TRAIL

TRAIL

TRAIL

TRAIL

TRAIL

TRAIL

TRAIL

TRAIL

TRAIL

TRAIL

TRAIL

TRAIL

TRAIL

TRAIL

TRAIL

TRAIL

TRAIL

TRAIL

TRAIL

TRAIL

TRAIL

TRAIL

TRAIL

TRAIL

TRAIL

TRAIL

TRAIL

TRAIL

TRAIL

TRAIL

TRAIL

TRAIL

TRAIL

TRAIL

TRAIL

TRAIL

TRAIL

TRAIL

TRAIL

TRAIL

TRAIL

TRAIL

TRAIL

TRAIL

TRAIL

TRAIL

TRAIL

TRAIL

TRAIL

TRAIL

TRAIL

TRAIL

TRAIL

TRAIL

TRAIL

TRAIL

TRAIL

TRAIL

TRAIL

TRAIL

TRAIL

TRAIL

TRAIL

TRAIL

TRAIL

TRAIL

TRAIL

TRAIL

TRAIL

TRAIL

TRAIL

TRAIL

TRAIL

TRAIL

TRAIL

TRAIL

TRAIL

TRAIL

TRAIL

TRAIL

TRAIL

TRAIL

TRAIL

TRAIL

TRAIL

TRAIL

TRAIL

TRAIL

TRAIL

TRAIL

TRAIL

TRAIL

TRAIL

TRAIL

TRAIL

TRAIL

TRAIL

TRAIL

TRAIL

TRAIL

TRAIL

TRAIL

TRAIL

TRAIL

TRAIL

TRAIL

TRAIL

TRAIL

TRAIL

TRAIL

TRAIL

TRAIL

TRAIL

TRAIL

TRAIL

TRAIL

TRAIL

TRAIL

TRAIL

TRAIL

TRAIL

TRAIL

TRAIL

TRAIL

TRAIL

TRAIL

TRAIL

TRAIL

TRAIL

TRAIL

TRAIL

TRAIL

TRAIL

TRAIL

TRAIL

TRAIL

TRAIL

TRAIL

TRAIL

TRAIL

TRAIL

TRAIL

TRAIL

TRAIL

TRAIL

TRAIL

TRAIL

TRAIL

TRAIL

117°11'W

117°10'W

117°9'W

117°8'W

48°26'N

48°26'N

48°25'N

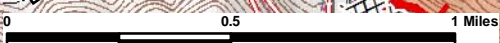
48°25'N

48°24'N

48°24'N

48°23'N

48°23'N



Div A

DP-63

DP-65



North Skookum Lake

South Skookum Lake

Div Z

Ojibway Knoll

Kings Mountain

117°11'W

117°10'W

117°9'W

117°8'W

117°8'W

117°7'W

117°6'W

117°5'W

48°26'N

48°26'N

48°25'N

48°25'N

48°24'N

48°24'N

48°23'N

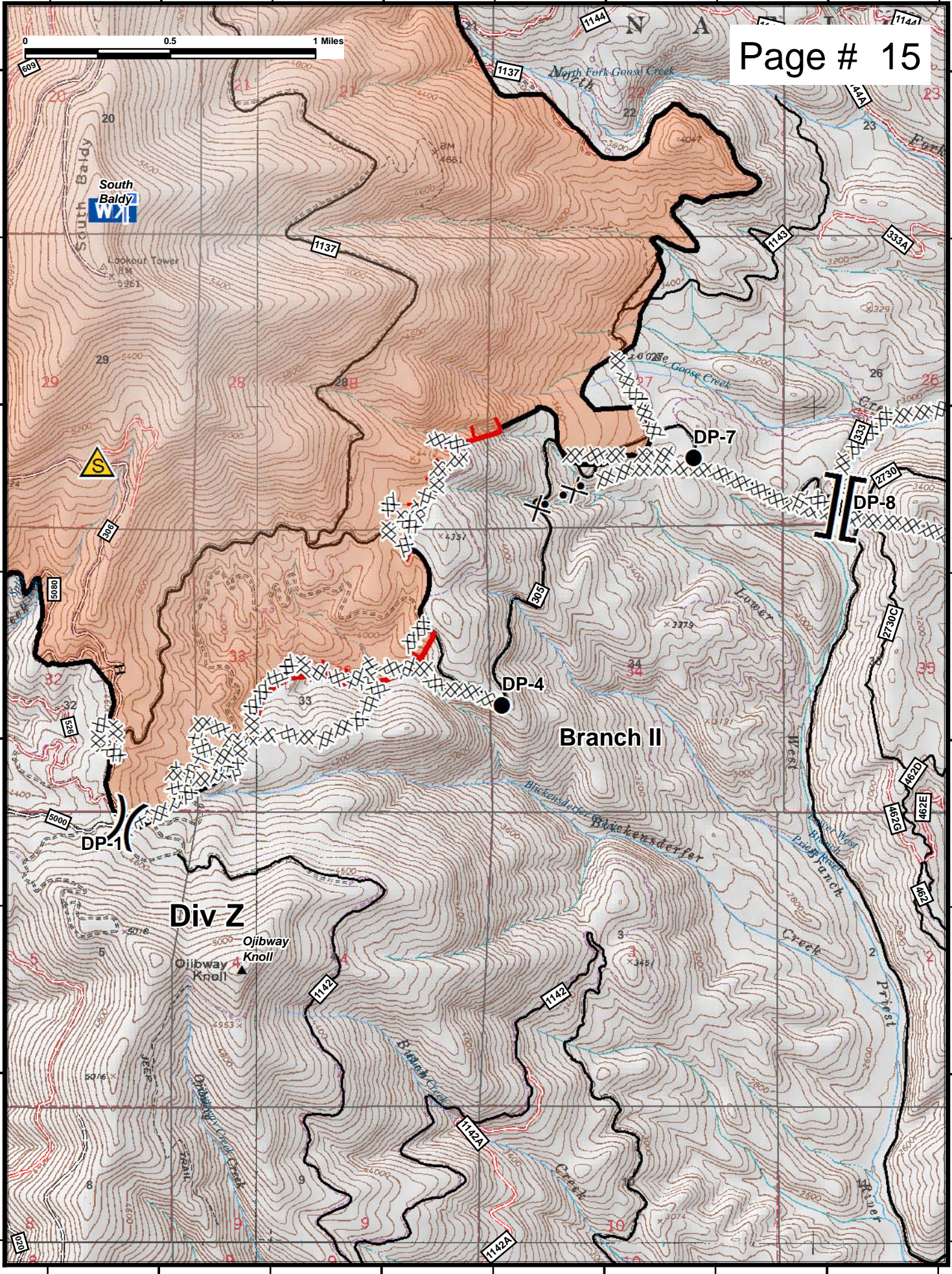
48°23'N

117°8'W

117°7'W

117°6'W

117°5'W



117°5'W

117°4'W

117°3'W

117°2'W

Div T

Branch I

48°26'N

48°26'N

48°25'N

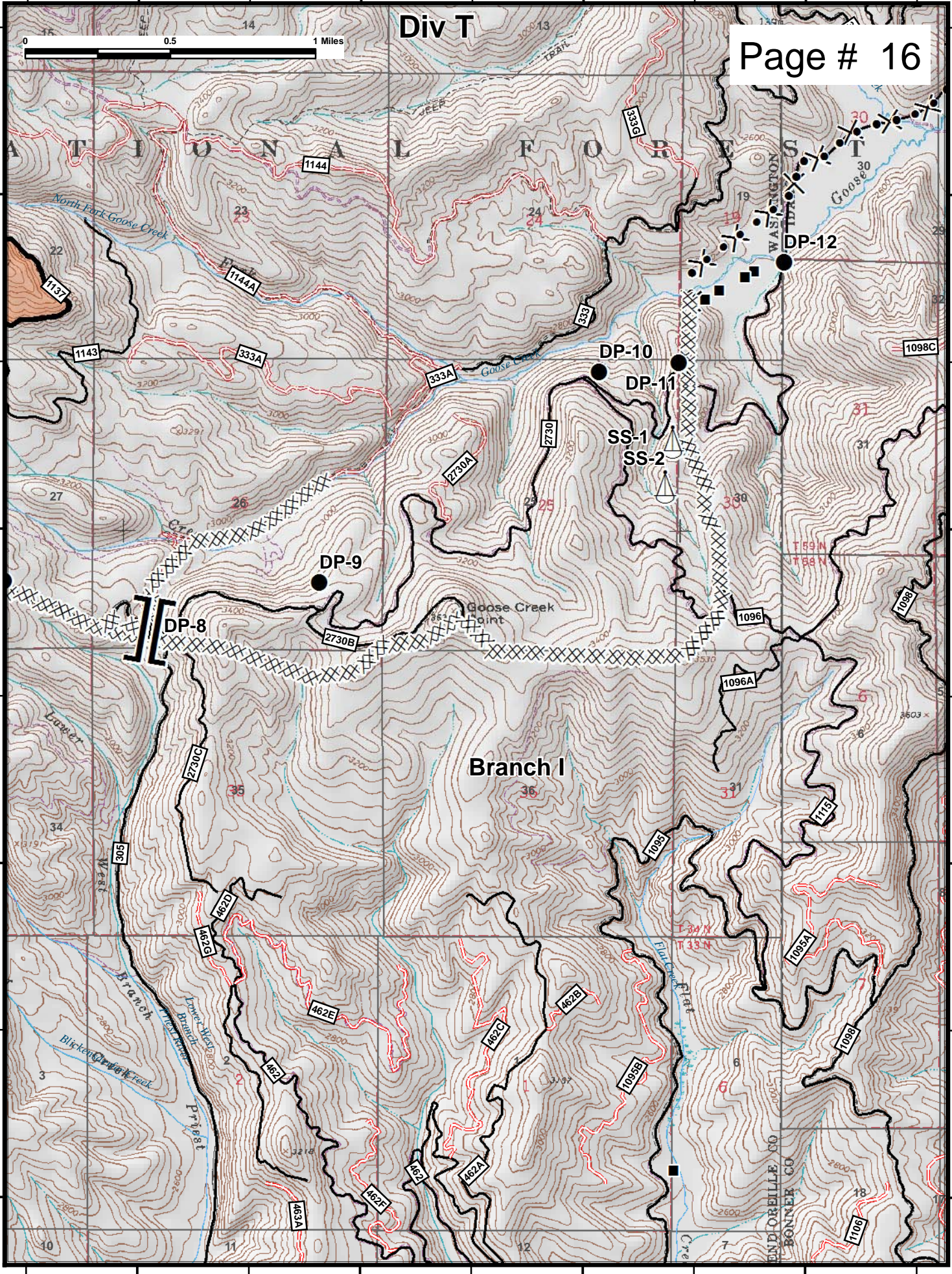
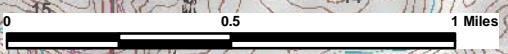
48°25'N

48°24'N

48°24'N

48°23'N

48°23'N



117°5'W

117°4'W

117°3'W

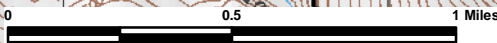
117°2'W

117°15'W

117°14'W

117°13'W

117°12'W



Page # 17

48°45'N

48°45'N

48°44'N

48°44'N

48°43'N

48°43'N

Div Onata

DP-101

DP-130

DP-120

DP-110

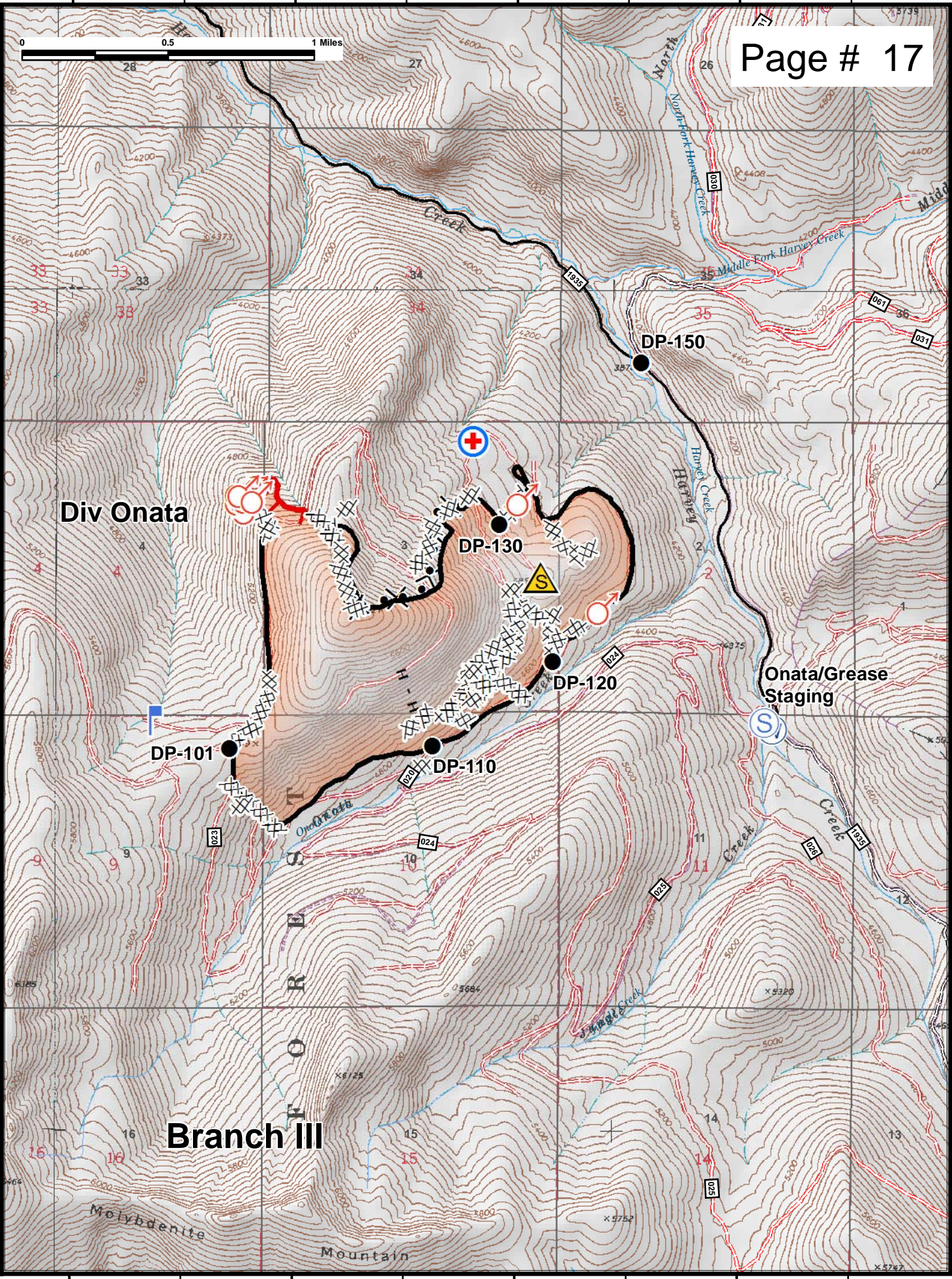
DP-150

Onata/Grease Staging

Branch III

Molybdenite

Mountain



117°15'W

117°14'W

117°13'W

117°12'W

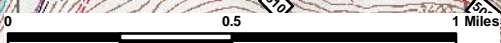
117°14'W

117°13'W

117°12'W

117°11'W

117°10'W



48°49'N

48°49'N

48°48'N

48°48'N

48°47'N

48°47'N

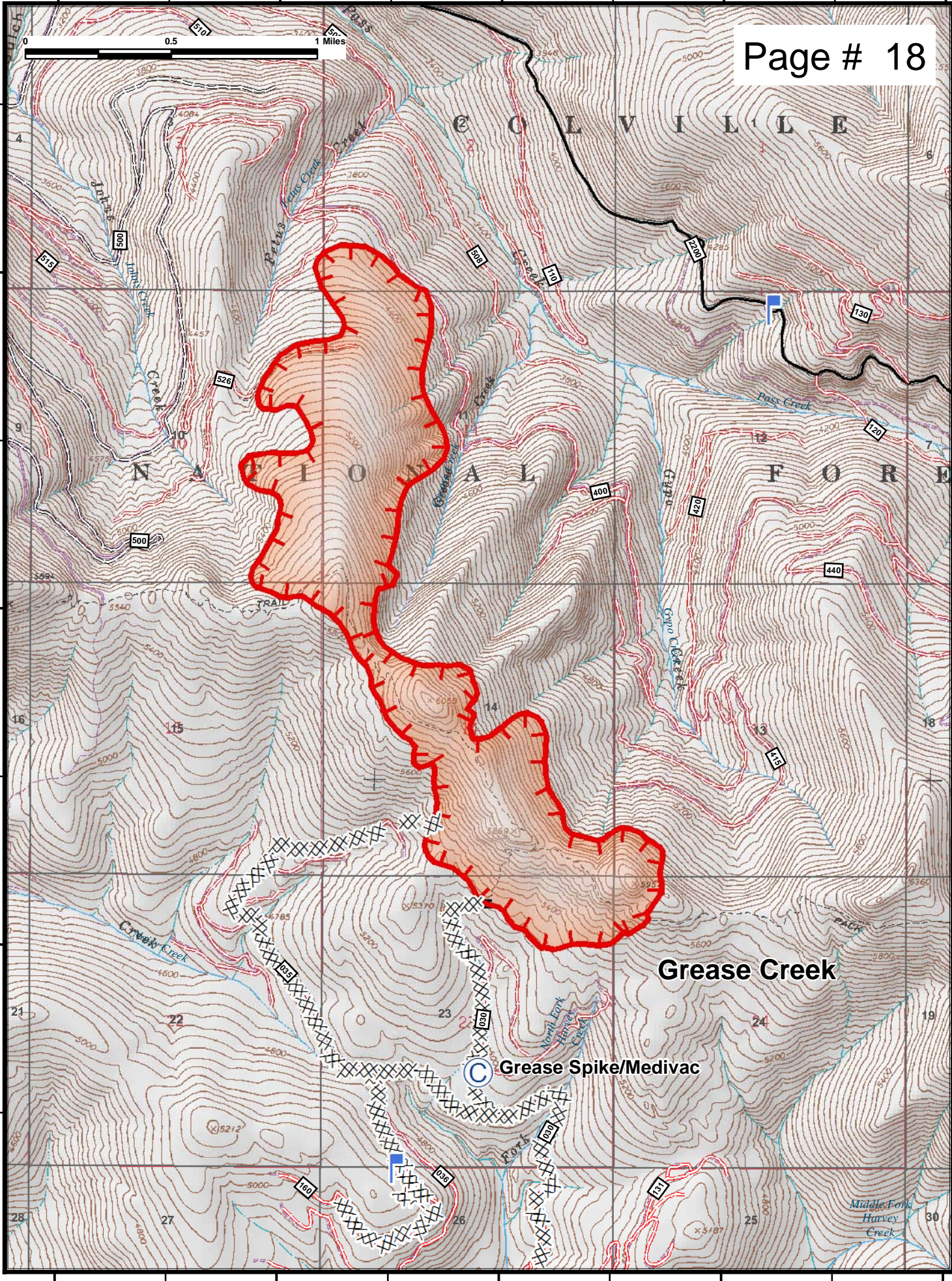
117°14'W

117°13'W

117°12'W

117°11'W

117°10'W



Grease Creek

Grease Spike/Medivac

C O L V I L L E

N A T I O N A L

F O R K

Creeks Creek

Middle Fork Harvey Creek