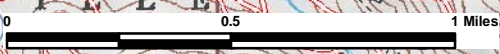


117°12'W

117°11'W

117°10'W

117°9'W



48°36'N

48°36'N

48°35'N

48°35'N

48°34'N

48°34'N

48°33'N

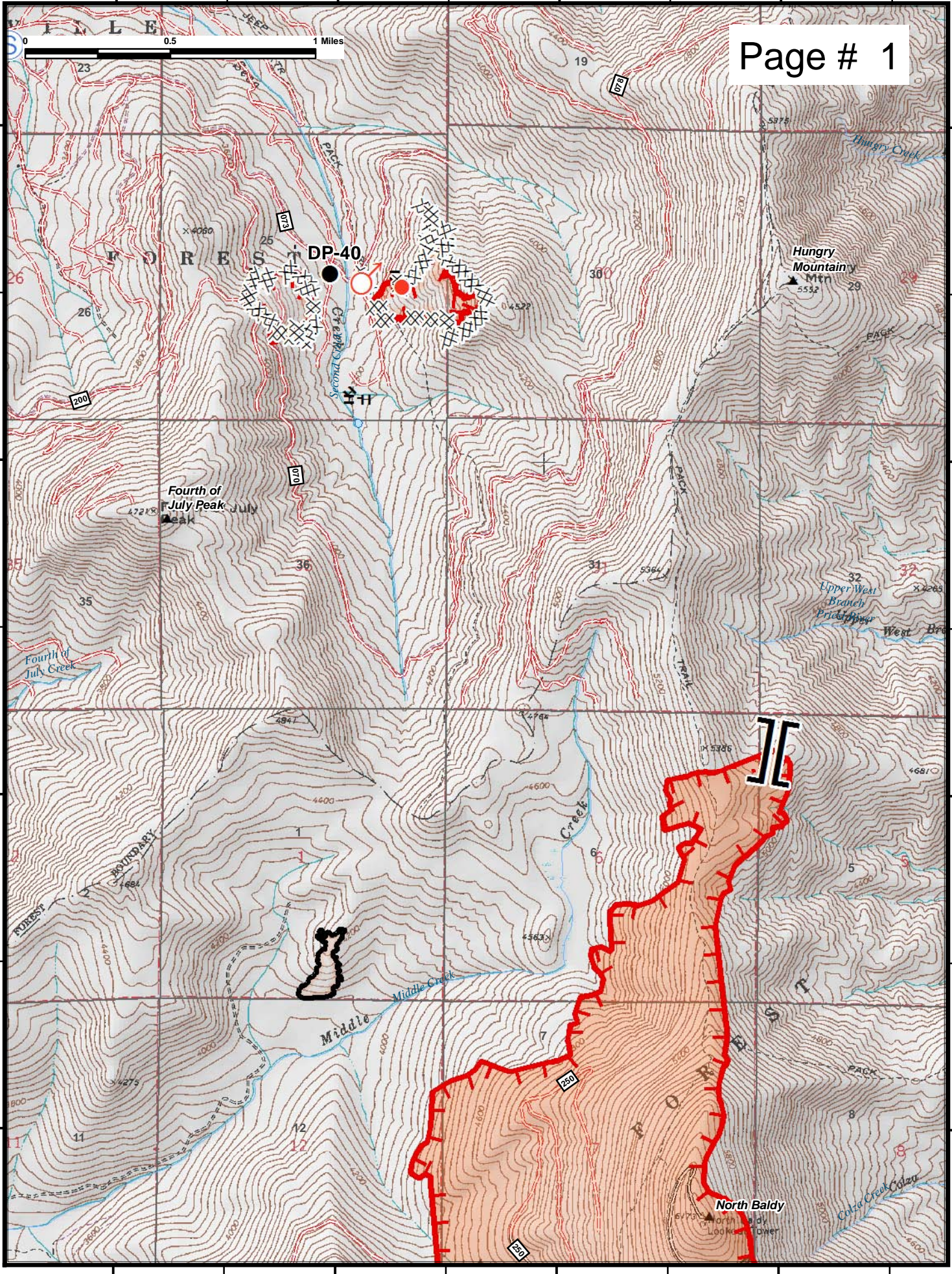
48°33'N

117°12'W

117°11'W

117°10'W

117°9'W

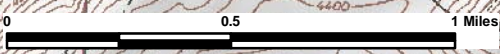


117°12'W 117°11'W 117°10'W 117°9'W 117°8'W

48°34'N

48°34'N

Page # 2



48°33'N

48°33'N

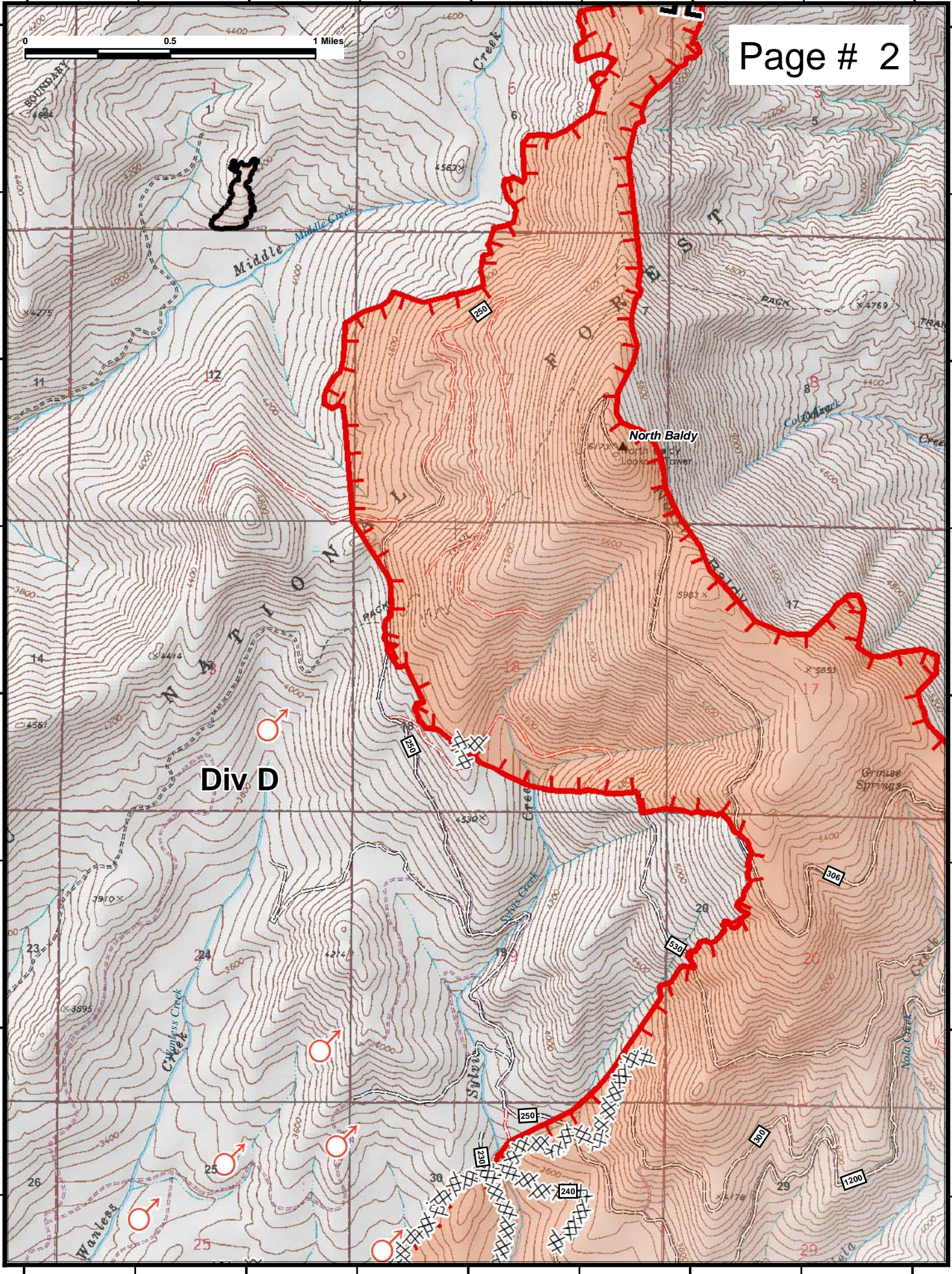
48°32'N

48°32'N

48°31'N

48°31'N

117°12'W 117°11'W 117°10'W 117°9'W 117°8'W



Div D

North Baldy



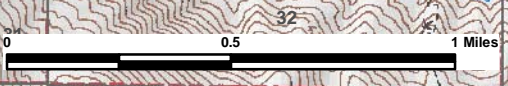
117°9'W

117°8'W

117°7'W

117°6'W

Page # 3



48°34'N

48°34'N

48°33'N

48°33'N

48°32'N

48°32'N

48°31'N

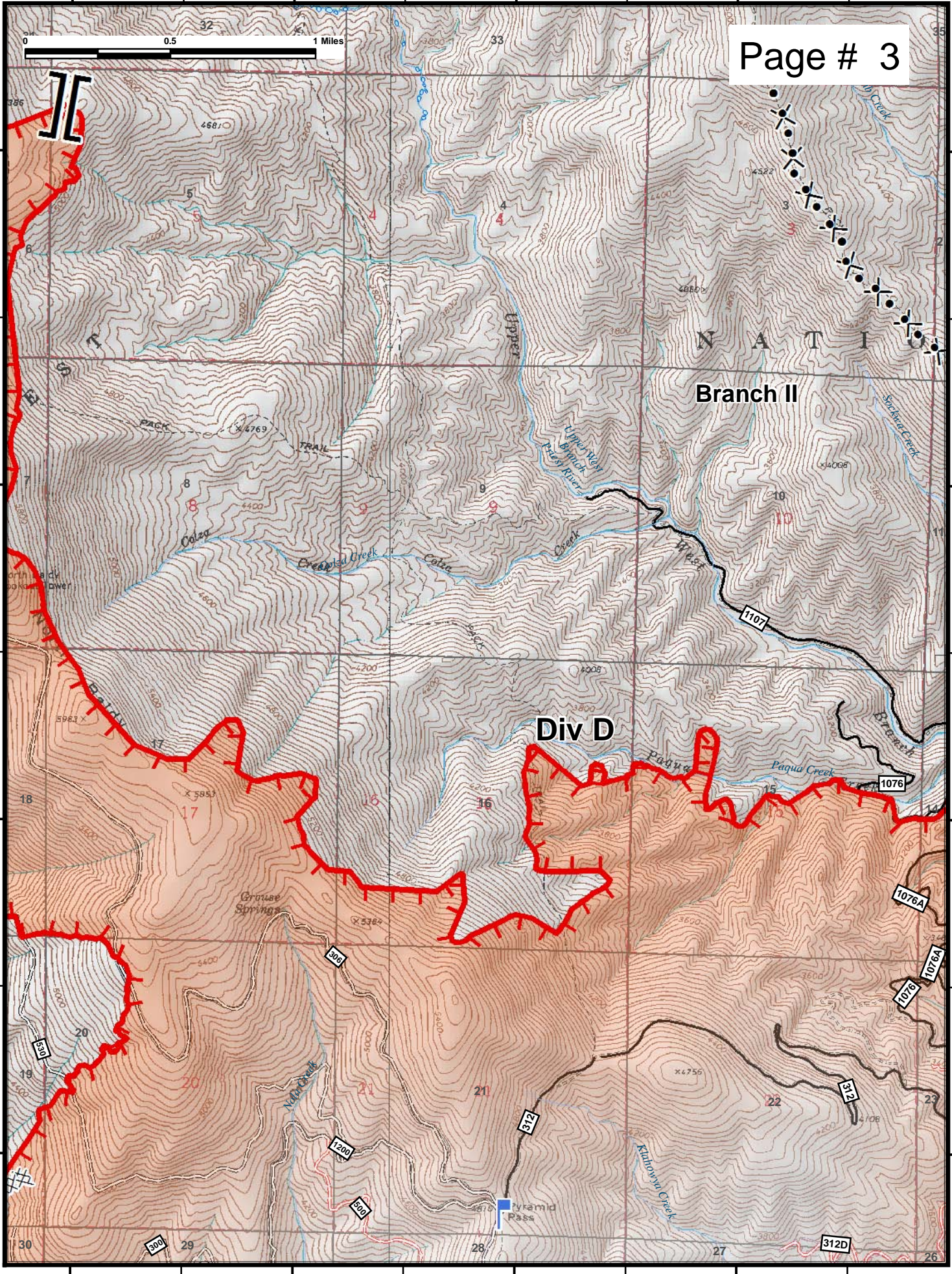
48°31'N

117°9'W

117°8'W

117°7'W

117°6'W



Branch II

Div D

N A T I O



117°13'W

117°12'W

117°11'W

117°10'W

Page # 5

48°31'N

48°31'N

48°30'N

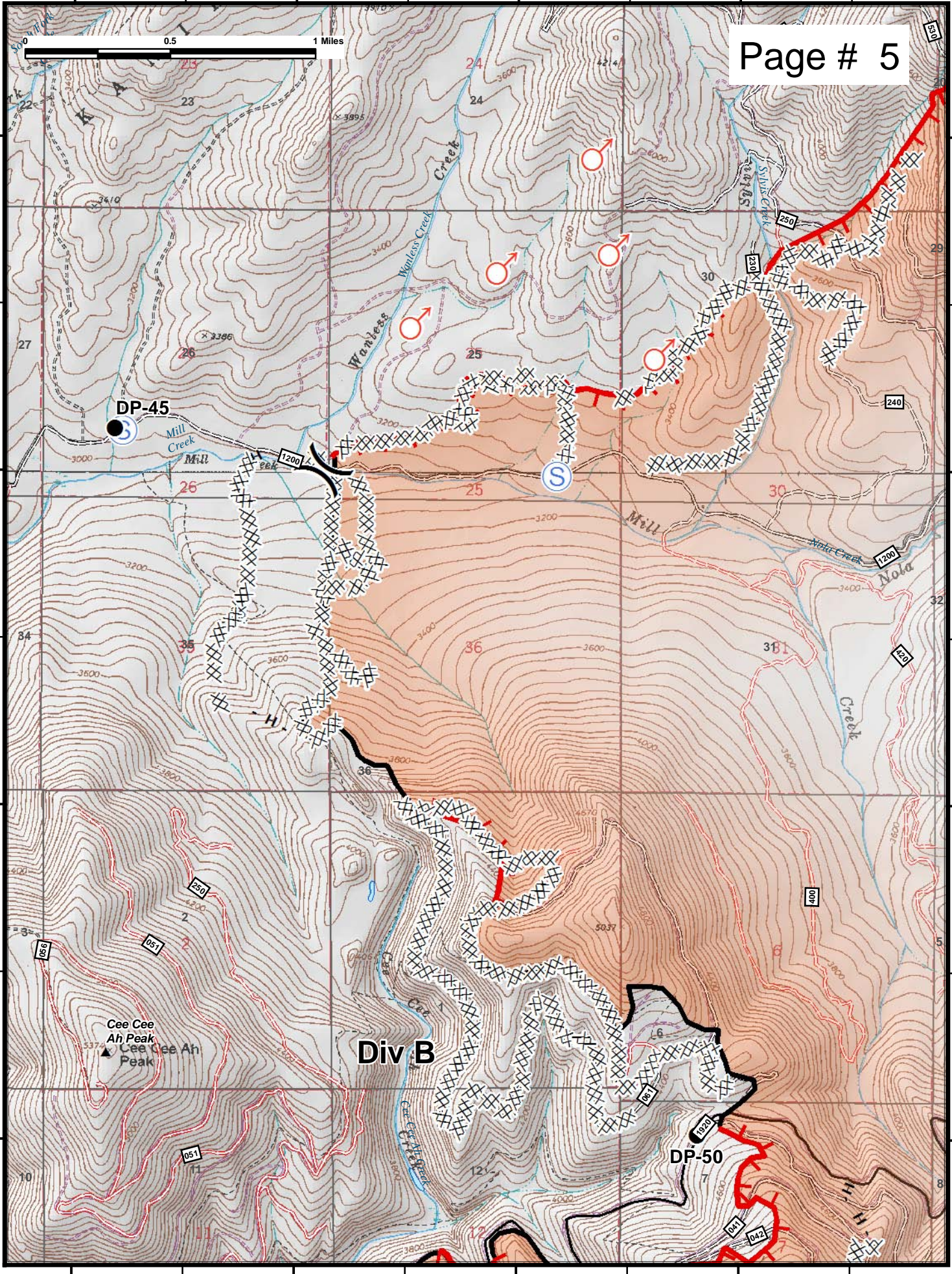
48°30'N

48°29'N

48°29'N

48°28'N

48°28'N

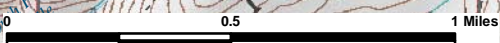


DP-45

Div B

DP-50

Cee Cee Ah Peak  
Cee Cee Ah Peak



117°10'W

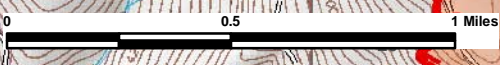
117°9'W

117°8'W

117°7'W

117°6'W

Page # 6



48°31'N

48°31'N

48°30'N

48°30'N

48°29'N

48°29'N

48°28'N

48°28'N

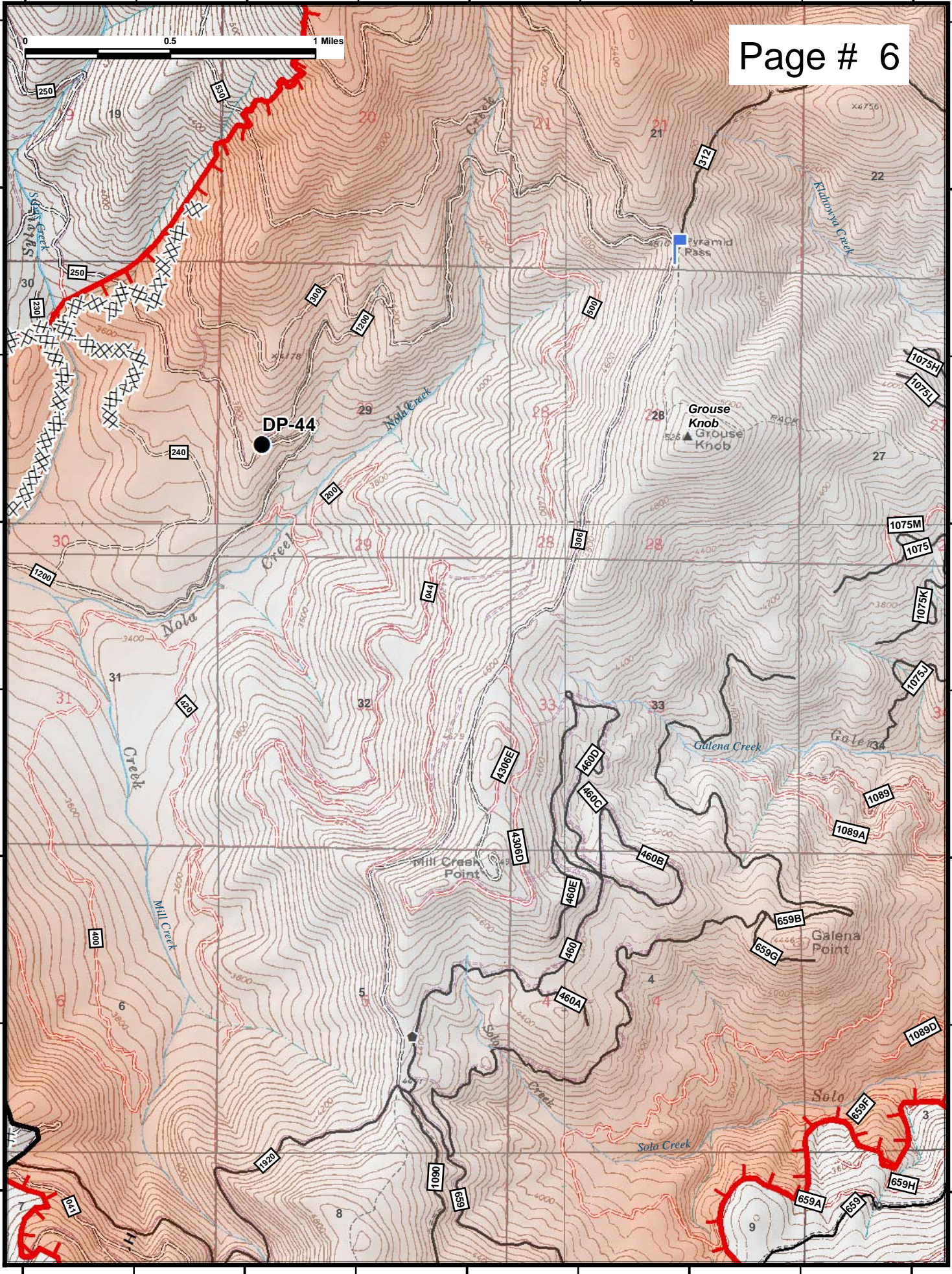
117°10'W

117°9'W

117°8'W

117°7'W

117°6'W









117°14'W

117°13'W

117°12'W

117°11'W

Div B

DP-55

Browns Lake

H-20

DP-60

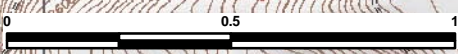
Div A

DP-65

Cee Cee Ah Peak  
▲ Cee Cee Ah Peak

K A N N I K S

N A T I O N A L



48°28'N

48°28'N

48°27'N

48°27'N

48°26'N

48°26'N

48°25'N

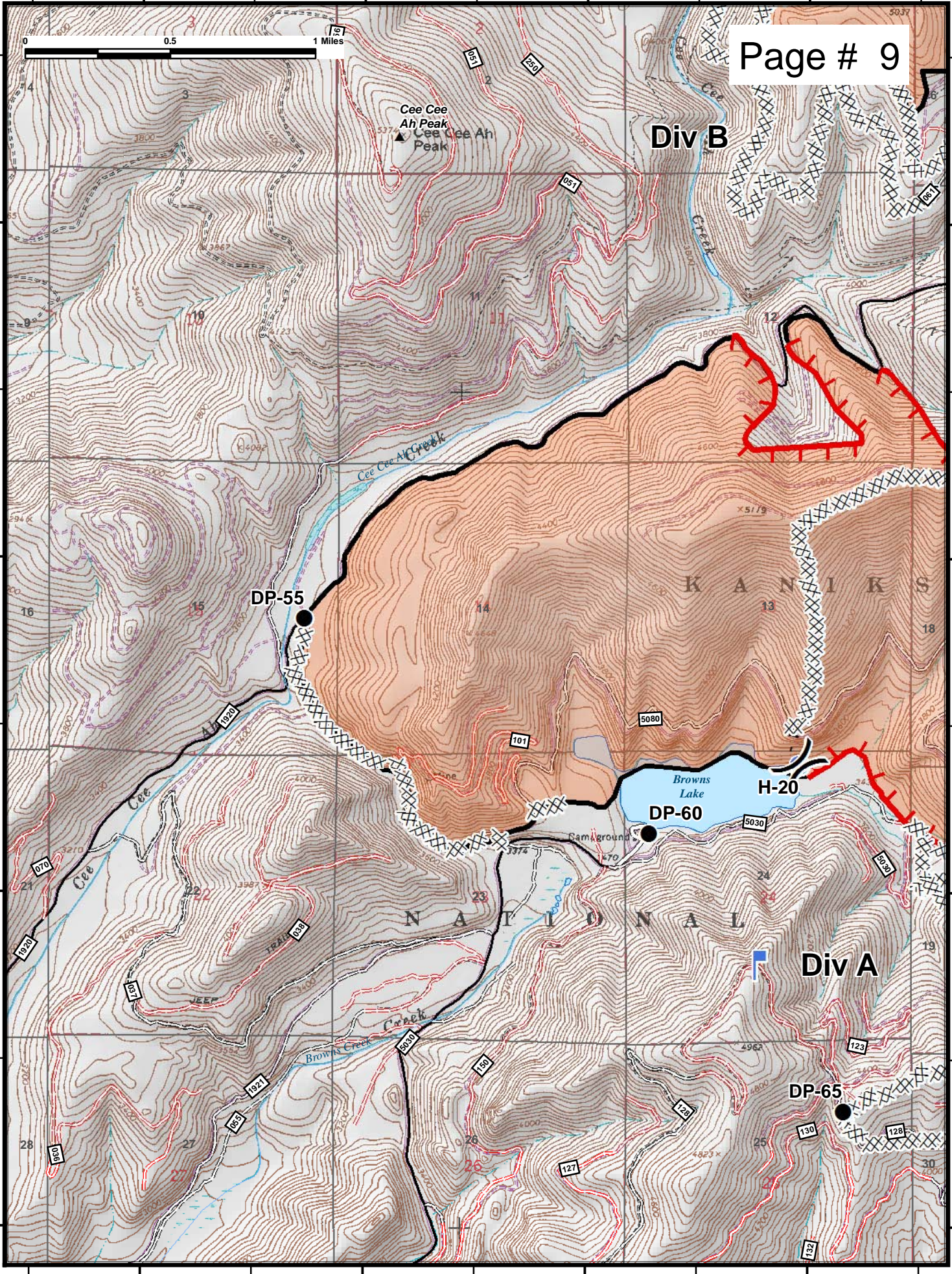
48°25'N

117°14'W

117°13'W

117°12'W

117°11'W

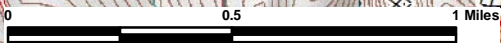


117°12'W

117°11'W

117°10'W

117°9'W



48°28'N

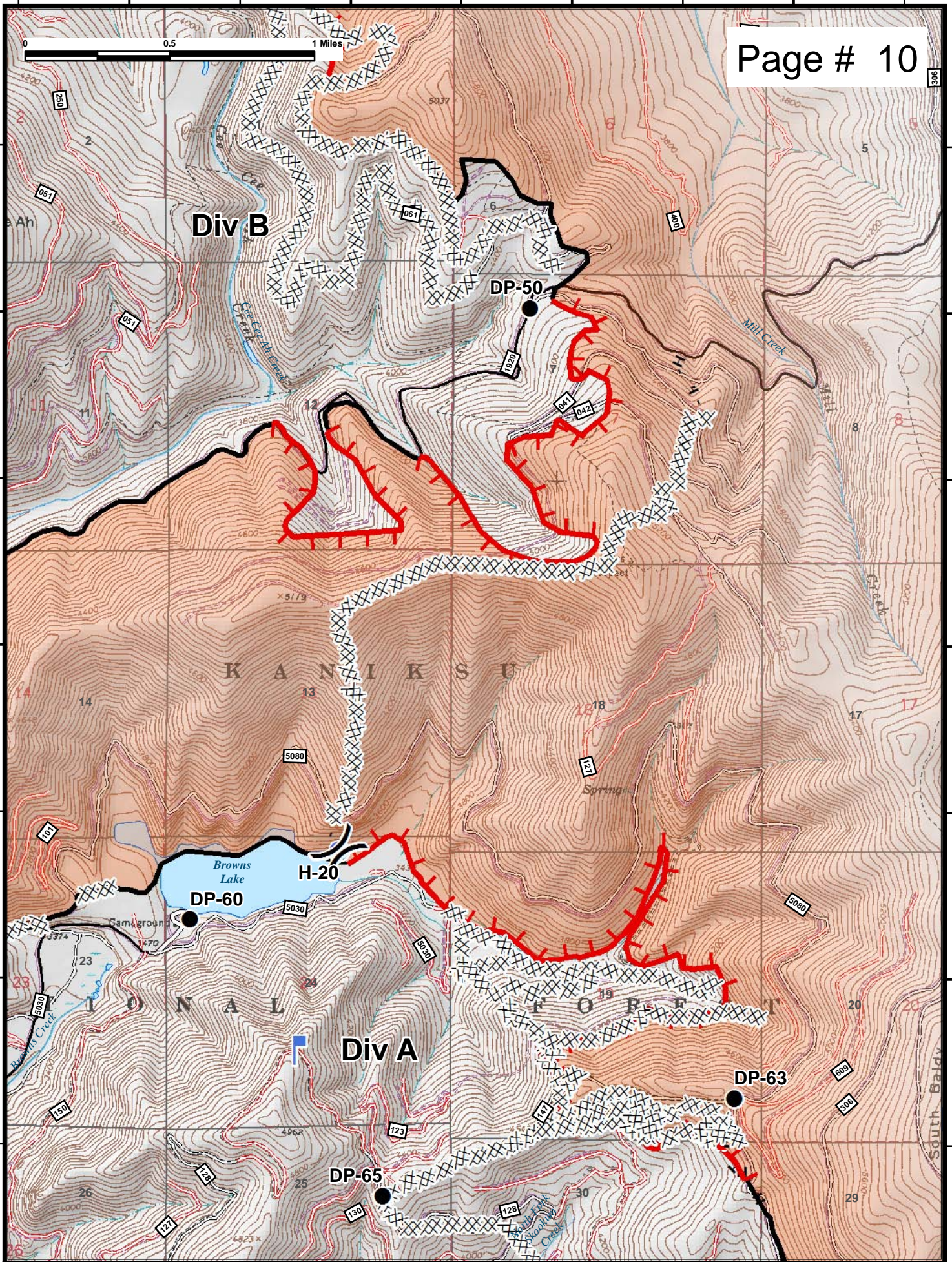
48°28'N

48°27'N

48°27'N

48°26'N

48°26'N



117°12'W

117°11'W

117°10'W

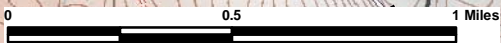
117°9'W

117°9'W

117°8'W

117°7'W

117°6'W



Page # 11

48°28'N

48°28'N

48°27'N

48°27'N

48°26'N

48°26'N

48°25'N

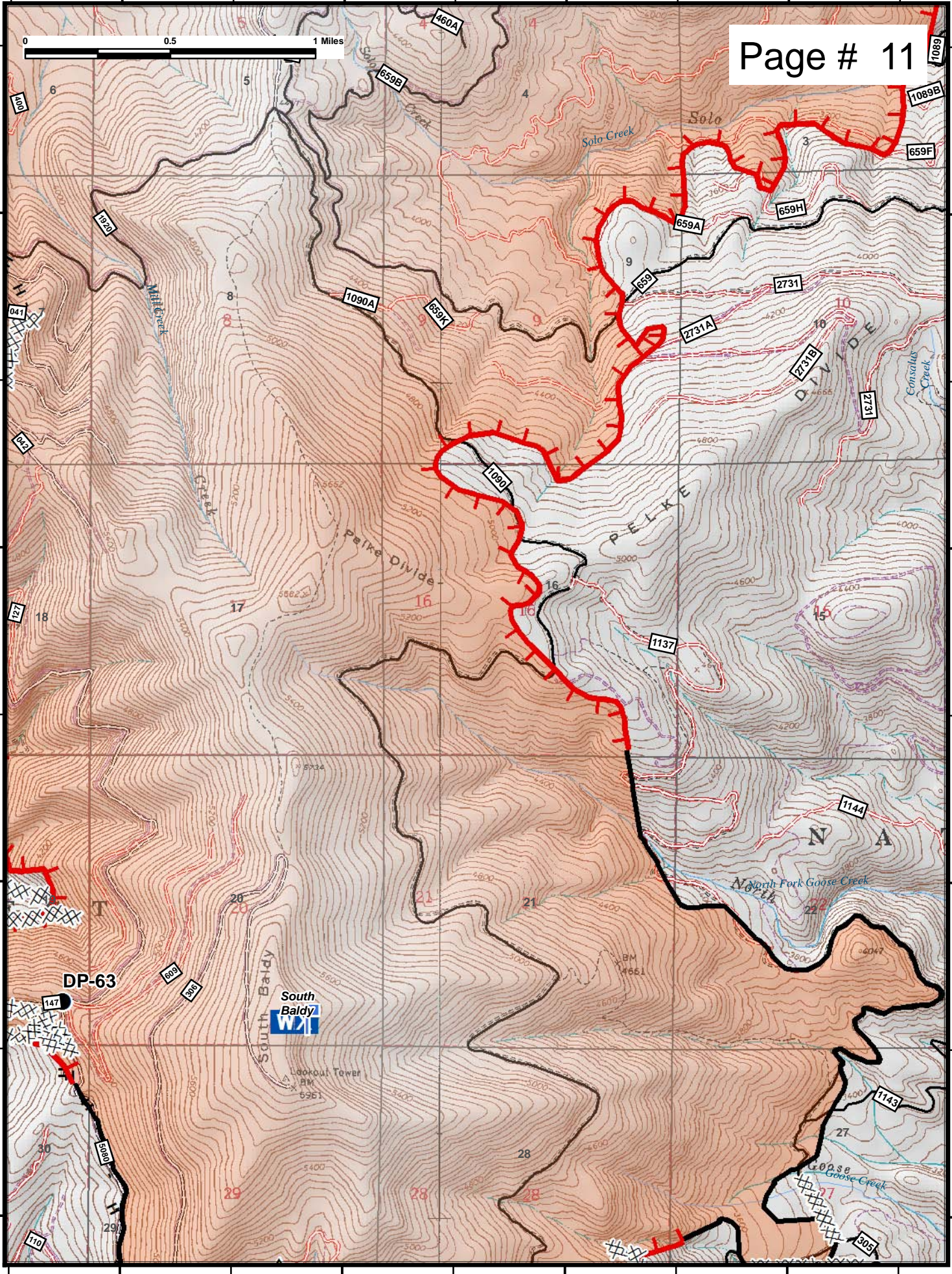
48°25'N

117°9'W

117°8'W

117°7'W

117°6'W



DP-63



Lookout Tower  
BM  
5961

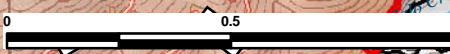
N A

117°6'W

117°5'W

117°4'W

117°3'W



48°28'N

48°28'N

48°27'N

48°27'N

48°26'N

48°26'N

48°25'N

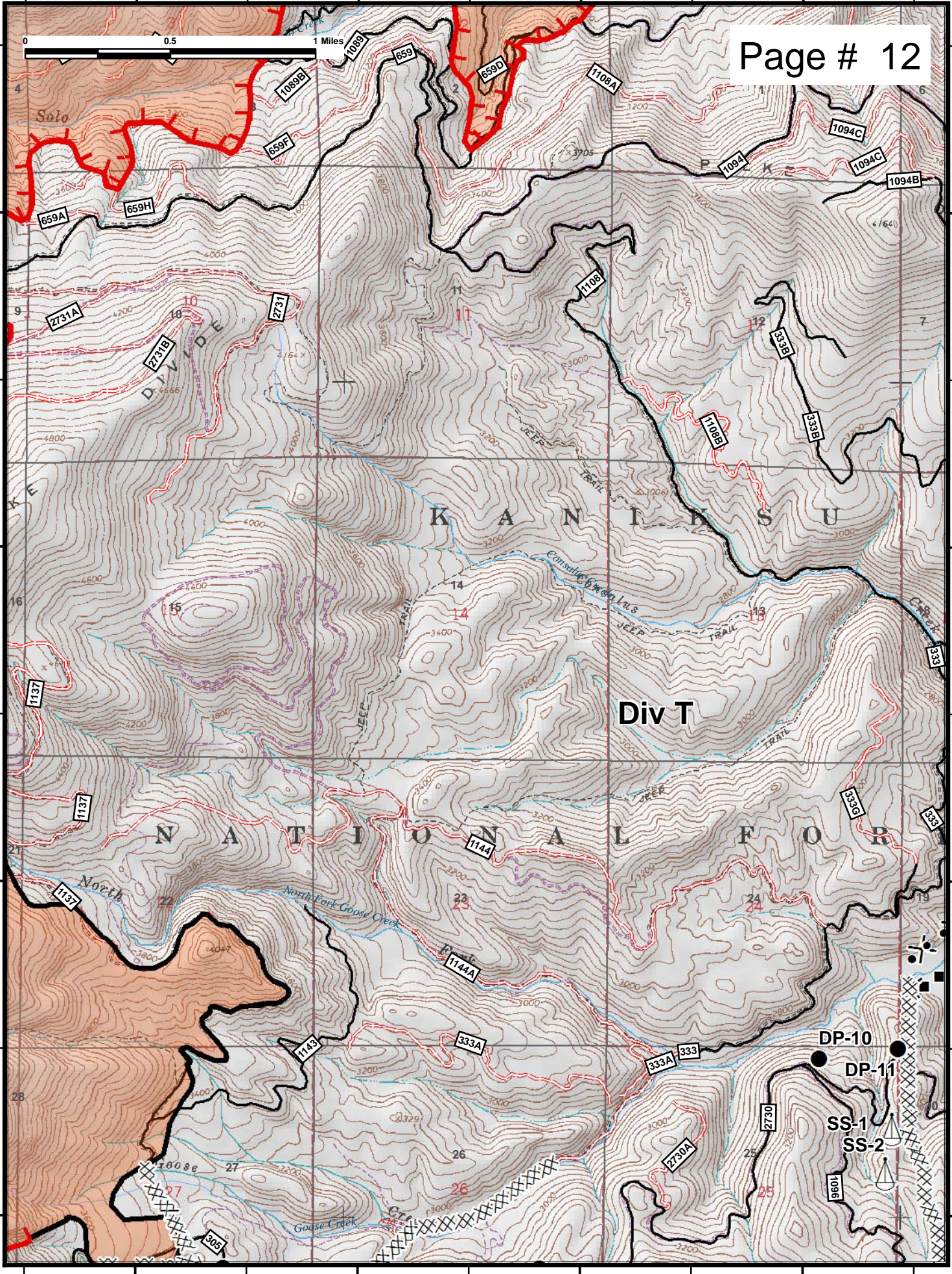
48°25'N

117°6'W

117°5'W

117°4'W

117°3'W



117°3'W

117°2'W

117°1'W

117°0'W

48°29'N

48°29'N

48°28'N

48°28'N

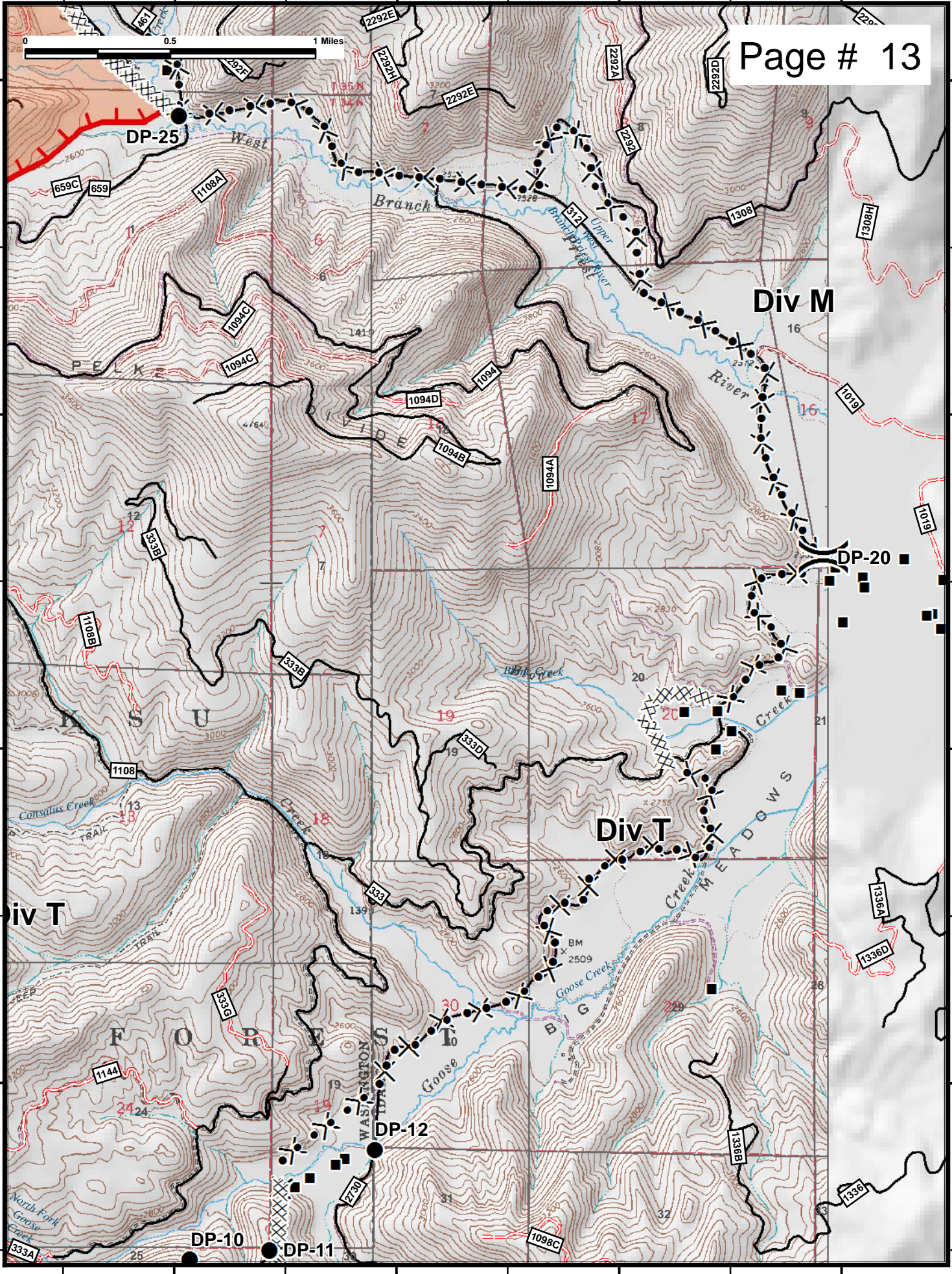
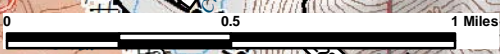
48°27'N

48°27'N

48°26'N

48°26'N

Page # 13



117°11'W

117°10'W

117°9'W

117°8'W

48°26'N

48°26'N

48°25'N

48°25'N

48°24'N

48°24'N

48°23'N

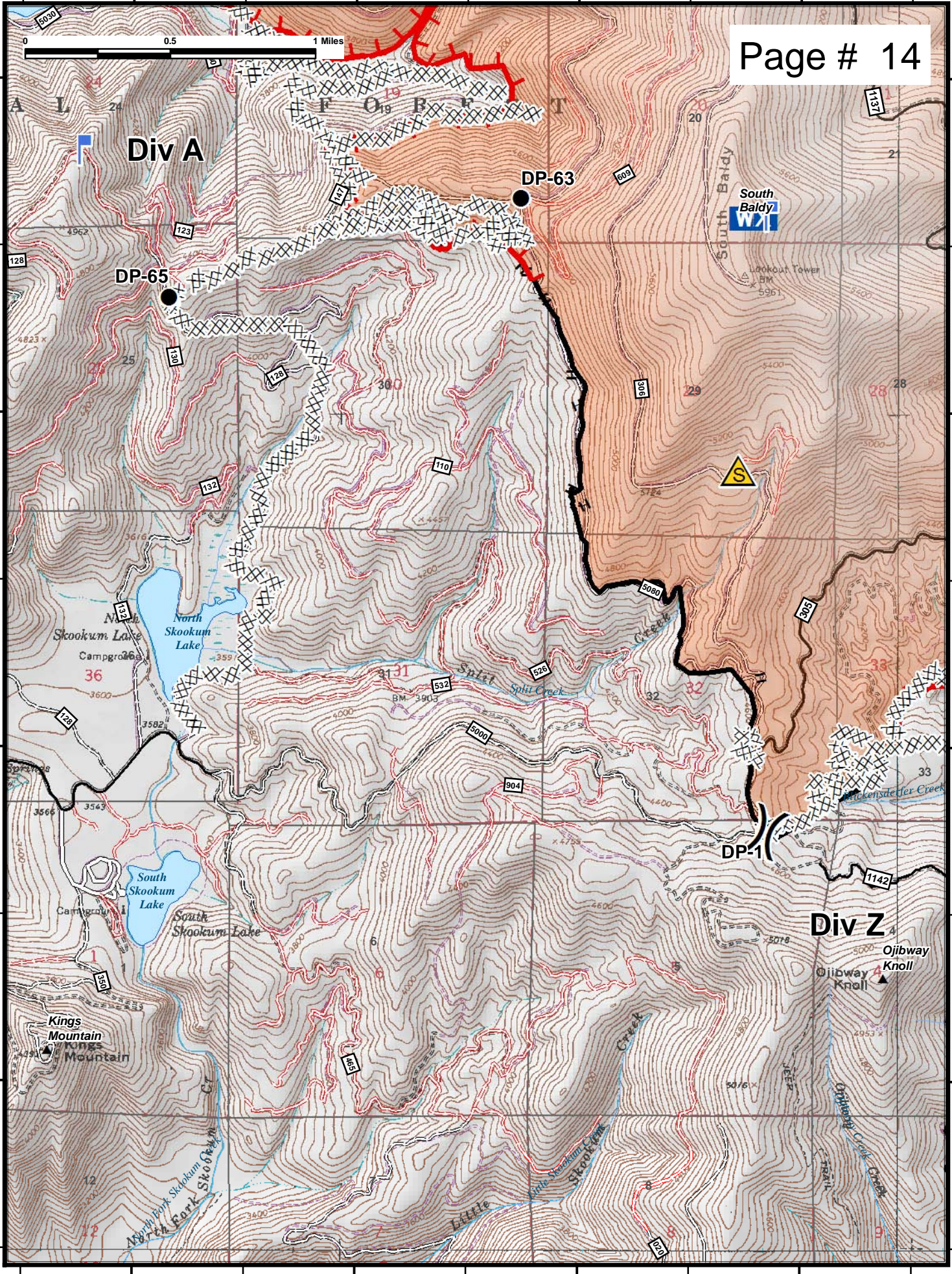
48°23'N

117°11'W

117°10'W

117°9'W

117°8'W



Div A

DP-63

DP-65



DP-1

Div Z

Ojibway Knoll

North Skookum Lake

South Skookum Lake

Kings Mountain

Little Skookum Creek

Split Creek

Ojibway Knoll

Ojibway Knoll

Ojibway Knoll



Lookout Tower BM 5961



DP-1

Ojibway Knoll

Ojibway Knoll

117°8'W

117°7'W

117°6'W

117°5'W

48°26'N

48°26'N

48°25'N

48°25'N

48°24'N

48°24'N

48°23'N

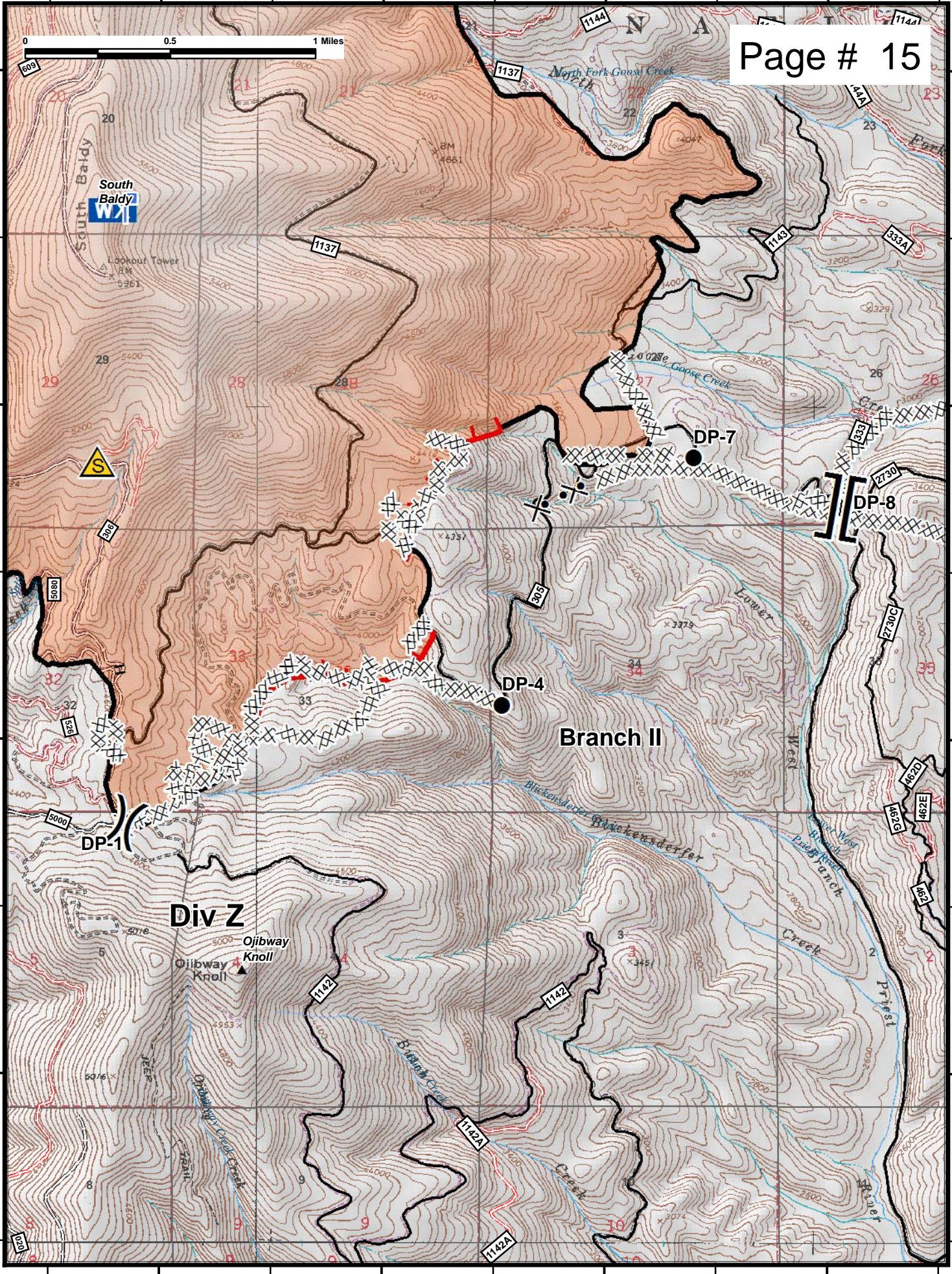
48°23'N

117°8'W

117°7'W

117°6'W

117°5'W





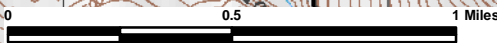


117°15'W

117°14'W

117°13'W

117°12'W



Page # 17

48°45'N

48°45'N

48°44'N

48°44'N

48°43'N

48°43'N

Div Onata

DP-101

DP-130

DP-120

DP-110

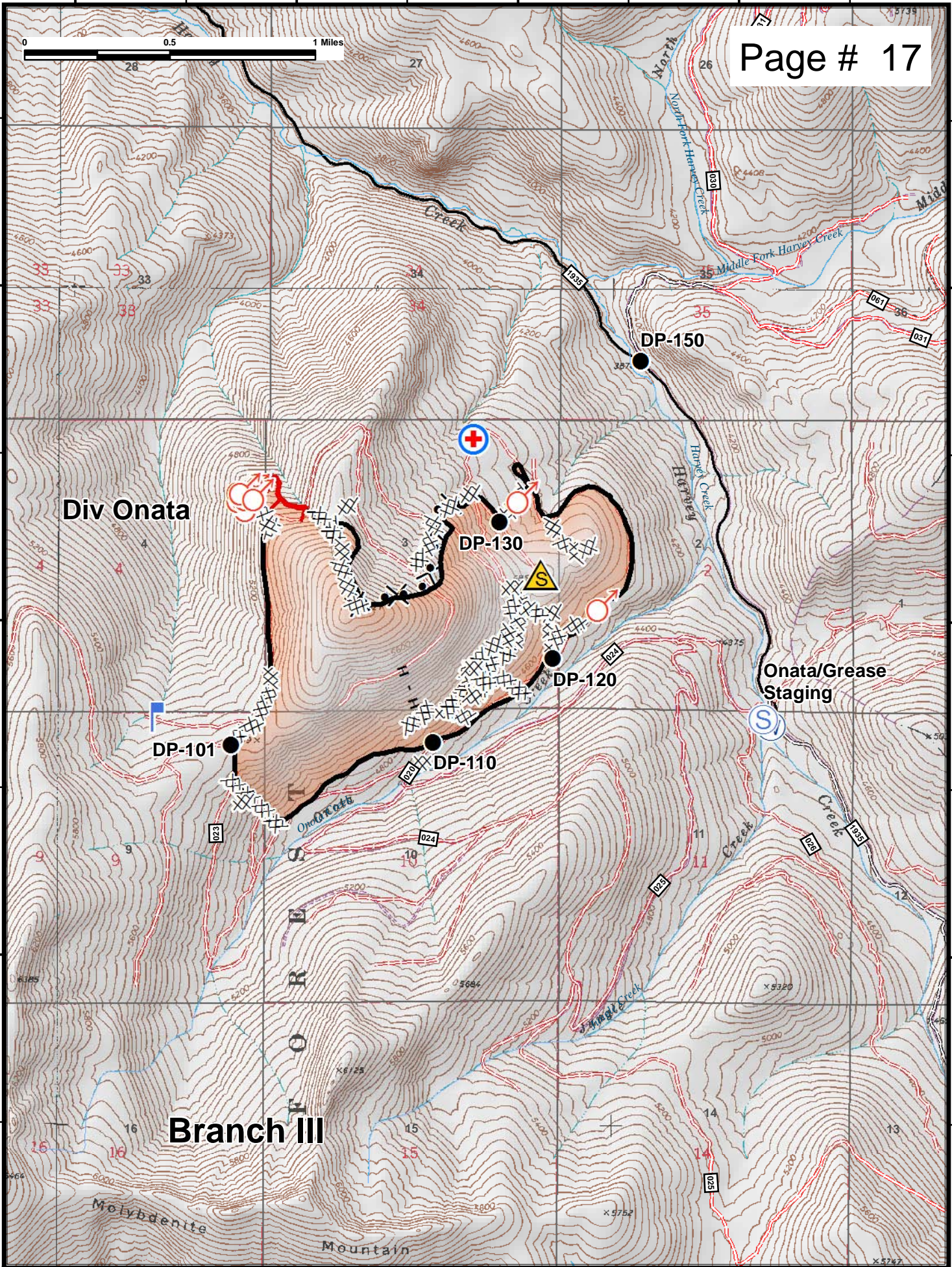
DP-150

Onata/Grease Staging

Branch III

Molybdenite

Mountain



117°15'W

117°14'W

117°13'W

117°12'W

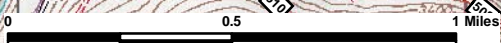
117°14'W

117°13'W

117°12'W

117°11'W

117°10'W



48°49'N

48°49'N

48°48'N

48°48'N

48°47'N

48°47'N

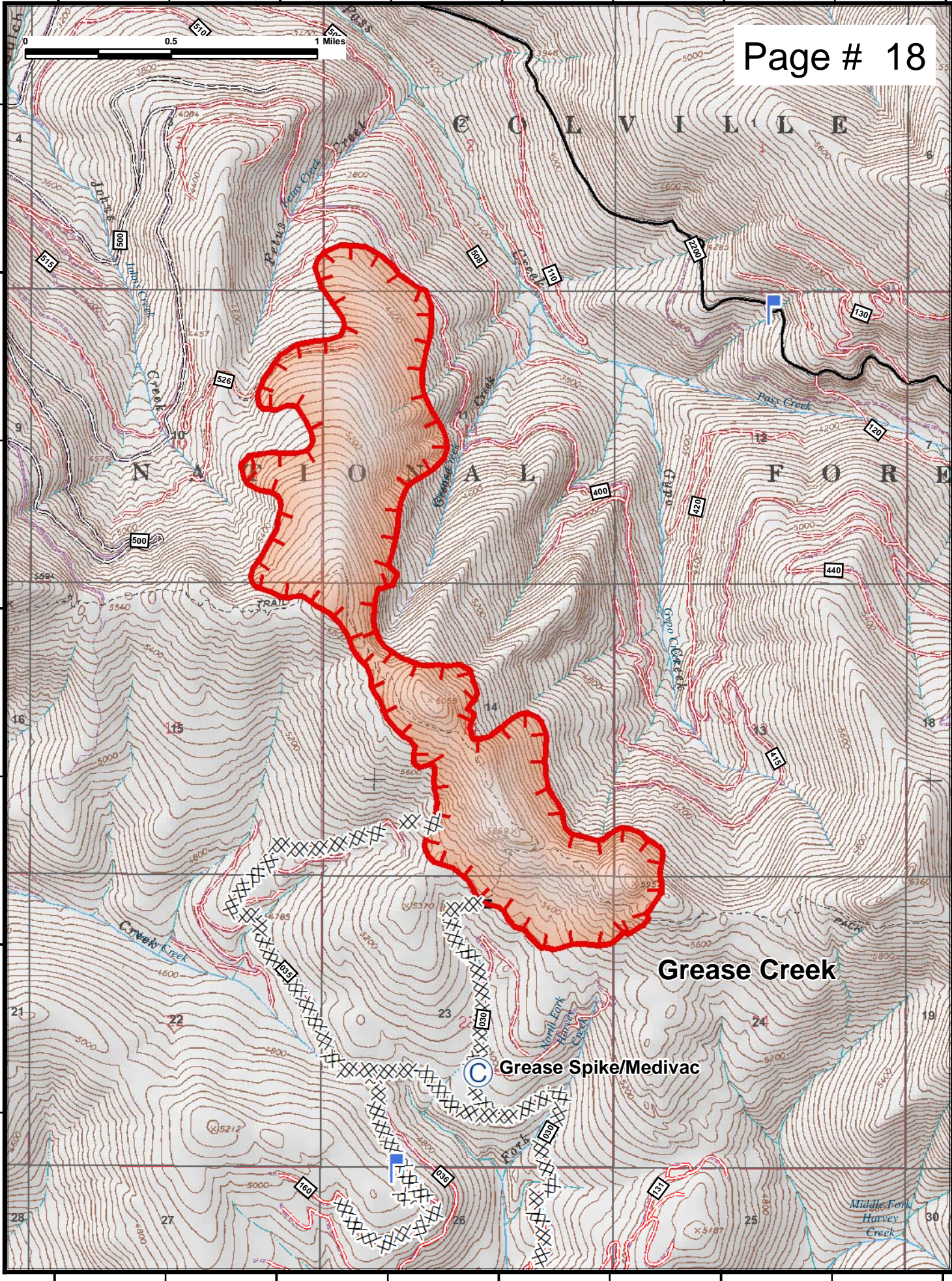
117°14'W

117°13'W

117°12'W

117°11'W

117°10'W



Grease Creek

Grease Spike/Medivac

C O L V I L L E

N A T I O N A L

F O R K

Creeks Creek

Middle Fork Harvey Creek