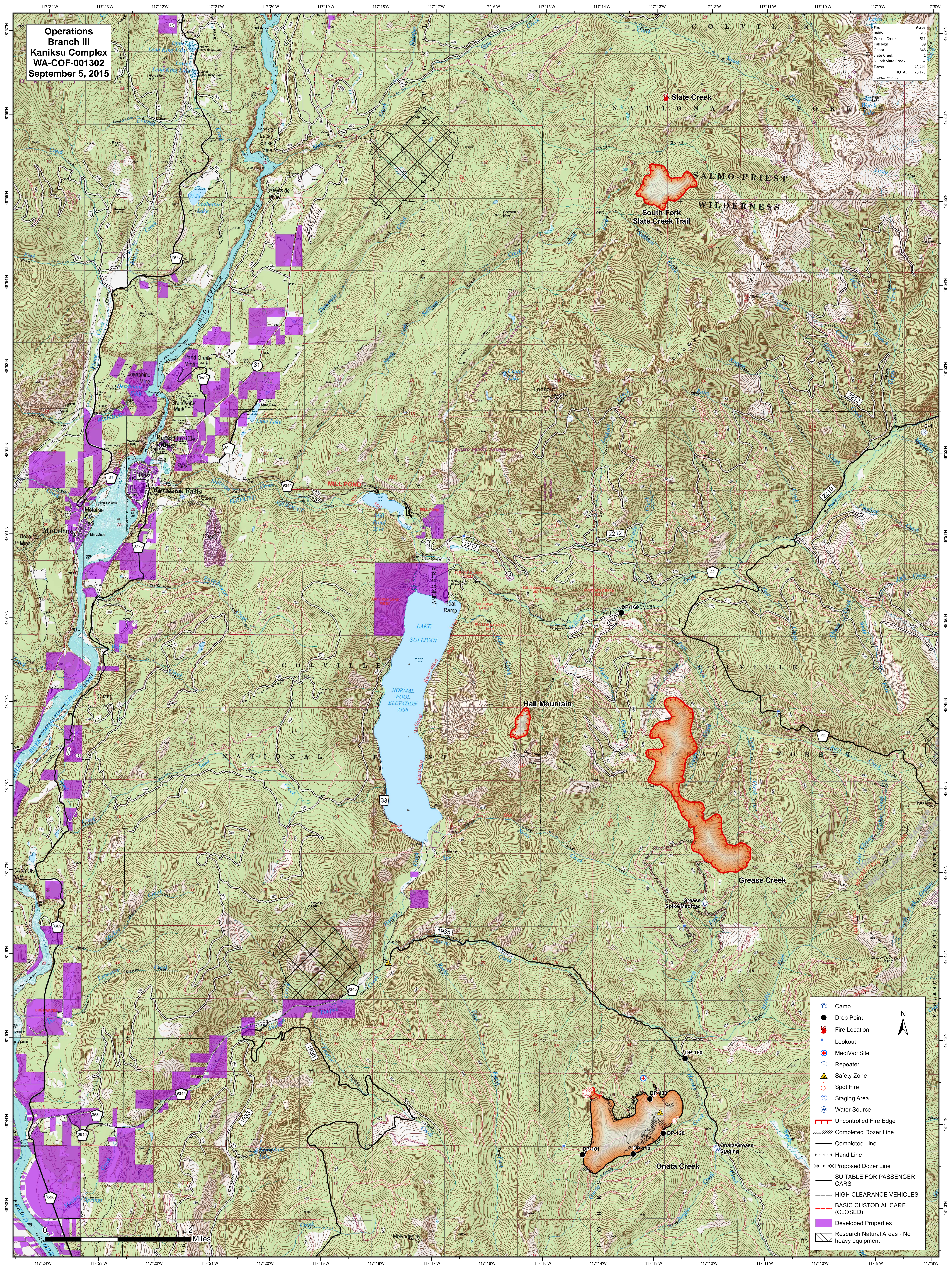


Operations
Branch III
Kaniksu Complex
WA-COF-001302
September 5, 2015

Feature	Acres
Fire	515
Baldy	611
Grease Creek	39
Hall Mtn	546
Onata	17
Slate Creek	167
S. Fork Slate Creek	24,296
Tower	26,175
TOTAL	26,175



	Camp	 N
	Drop Point	
	Fire Location	
	Lookout	
	MediVac Site	
	Repeater	
	Safety Zone	
	Spot Fire	
	Staging Area	
	Water Source	
	Uncontrolled Fire Edge	
	Completed Dozer Line	
	Completed Line	
	Hand Line	
	Proposed Dozer Line	
	SUITABLE FOR PASSENGER CARS	
	HIGH CLEARANCE VEHICLES	
	BASIC CUSTODIAL CARE (CLOSED)	
	Developed Properties	
	Research Natural Areas - No heavy equipment	

