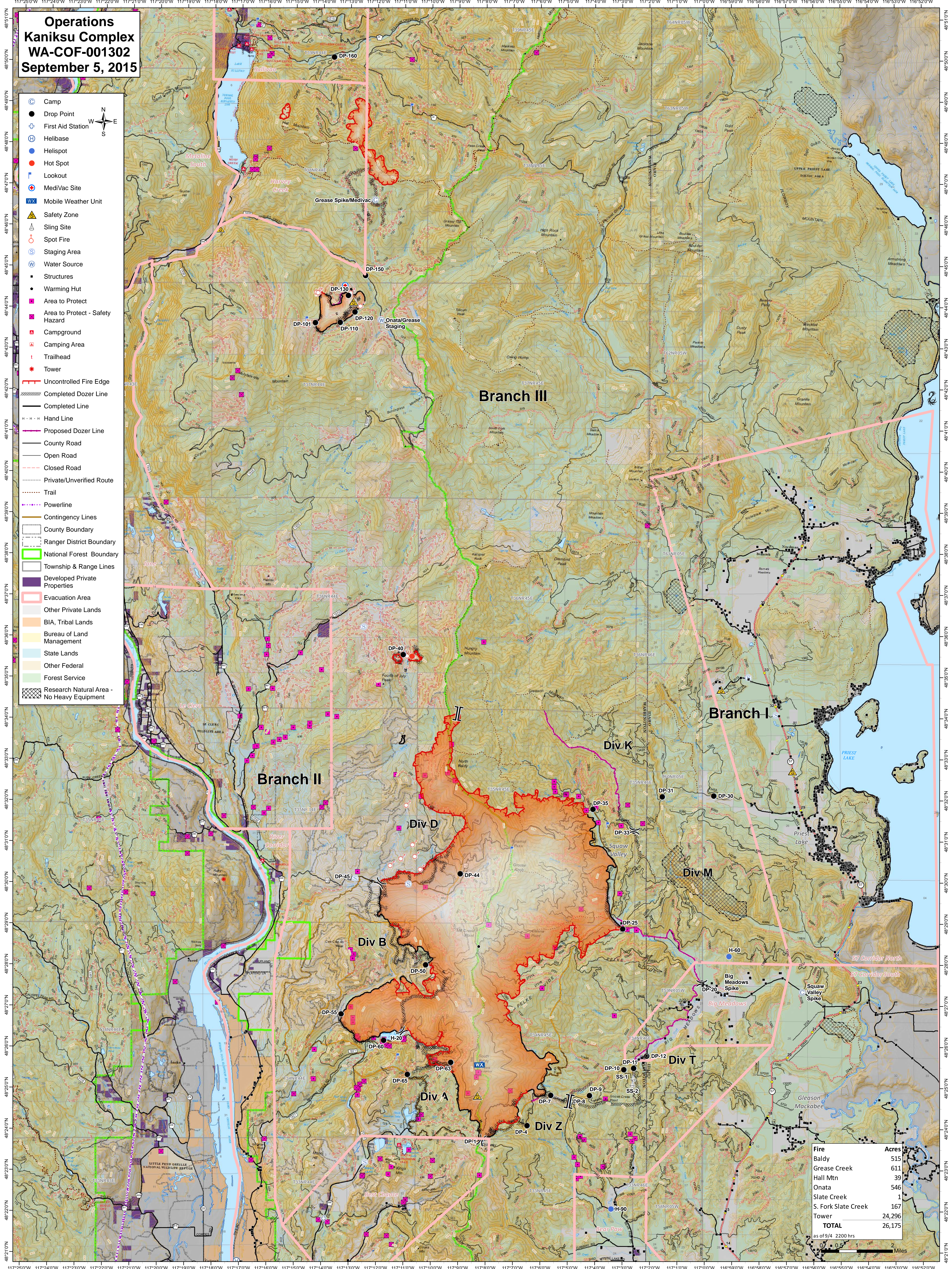


**Operations
Kaniksu Complex
WA-COF-001302
September 5, 2015**

- Camp
- Drop Point
- First Aid Station
- Helibase
- Helispot
- Hot Spot
- Lookout
- MediVac Site
- Mobile Weather Unit
- Safety Zone
- Sling Site
- Spot Fire
- Staging Area
- Water Source
- Structures
- Warming Hut
- Area to Protect
- Area to Protect - Safety Hazard
- Campground
- Camping Area
- Trailhead
- Tower
- Uncontrolled Fire Edge
- Completed Dozer Line
- Completed Line
- Hand Line
- Proposed Dozer Line
- County Road
- Open Road
- Closed Road
- Private/Unverified Route
- Trail
- Powerline
- Contingency Lines
- County Boundary
- Ranger District Boundary
- National Forest Boundary
- Township & Range Lines
- Developed Private Properties
- Evacuation Area
- Other Private Lands
- BIA, Tribal Lands
- Bureau of Land Management
- State Lands
- Other Federal
- Forest Service
- Research Natural Area - No Heavy Equipment



Fire	Acres
Baldy	515
Grease Creek	611
Hall Mtn	39
Onata	546
Slate Creek	1
S. Fork Slate Creek	167
Tower	24,296
TOTAL	26,175

as of 9/4 2200 hrs

0 0.5 1 2 Miles