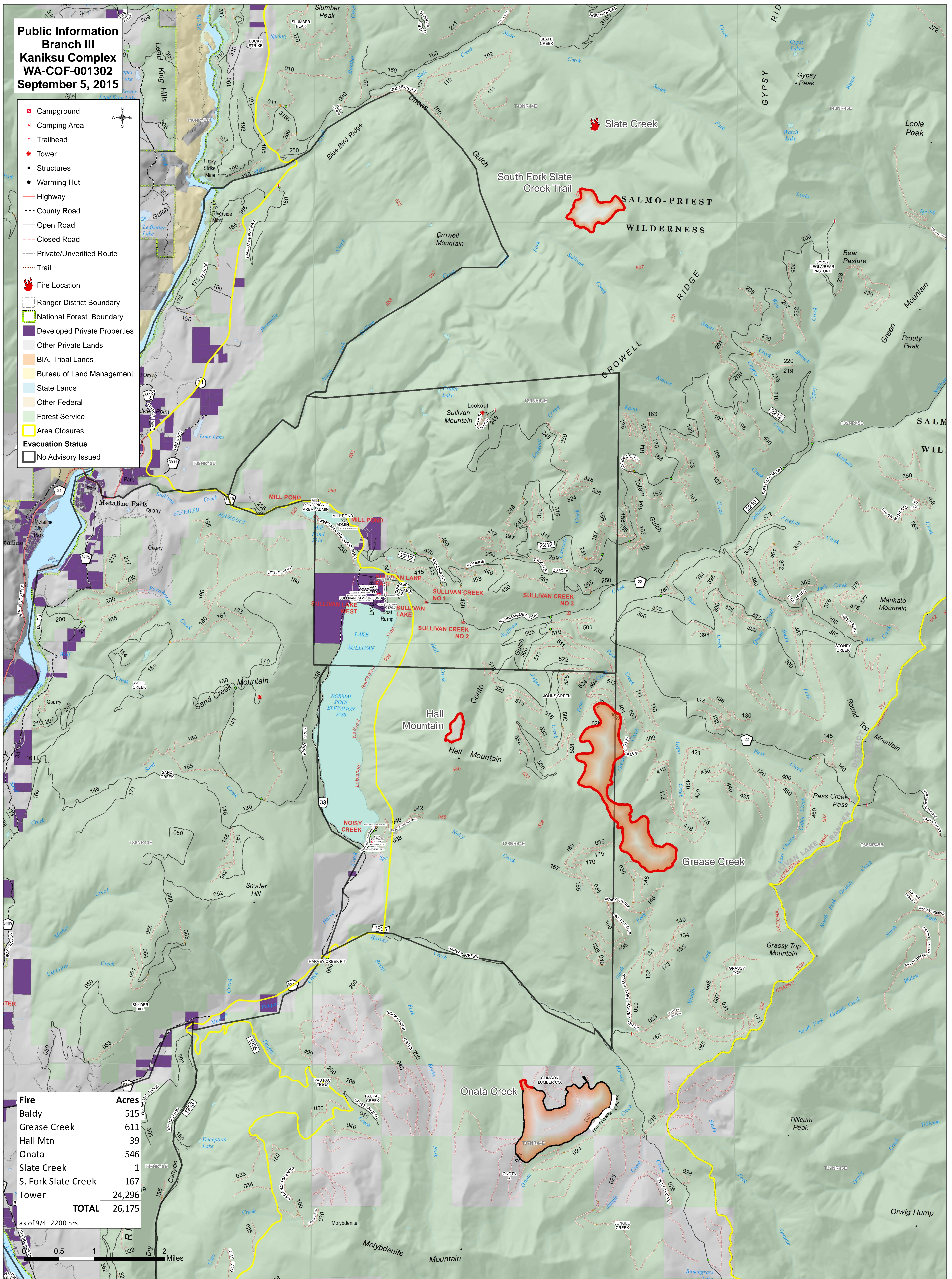


**Public Information  
Branch III  
Kaniksu Complex  
WA-COF-001302  
September 5, 2015**

- Campground
- Camping Area
- Trailhead
- Tower
- Structures
- Warming Hut
- Highway
- County Road
- Open Road
- Closed Road
- Private/Unverified Route
- Trail
- Fire Location
- Ranger District Boundary
- National Forest Boundary
- Developed Private Properties
- Other Private Lands
- BIA, Tribal Lands
- Bureau of Land Management
- State Lands
- Other Federal
- Forest Service
- Area Closures
- Evacuation Status**
- No Advisory Issued



Fire	Acres
Baldy	515
Grease Creek	611
Hall Mtn	39
Onata	546
Slate Creek	1
S. Fork Slate Creek	167
Tower	24,296
<b>TOTAL</b>	<b>26,175</b>

as of 9/4 2200 hrs

0.5 1 2 Miles