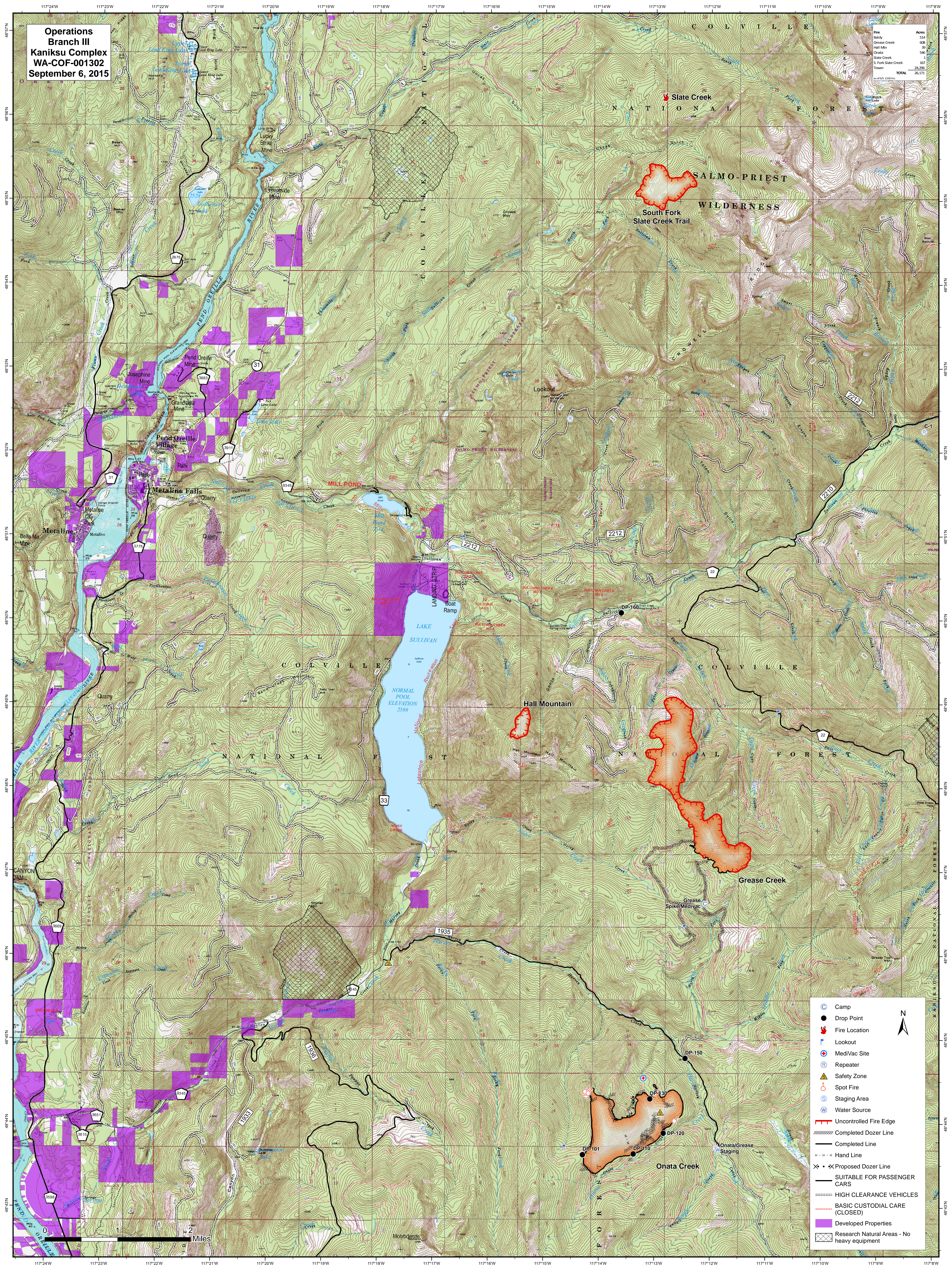


Operations  
Branch III  
Kaniksu Complex  
WA-COF-001302  
September 6, 2015

Fire	Acres
Baldy	534
Grease Creek	608
Hall Mtn	39
Onata	546
Slate Creek	107
S. Fork Slate Creek	24,296
Tower	10
<b>TOTAL</b>	<b>26,171</b>



- Camp
- Drop Point
- Fire Location
- Lookout
- MediVac Site
- Repeater
- Safety Zone
- Spot Fire
- Staging Area
- Water Source
- Uncontrolled Fire Edge
- Completed Dozer Line
- Completed Line
- Hand Line
- Proposed Dozer Line
- SUITABLE FOR PASSENGER CARS
- HIGH CLEARANCE VEHICLES
- BASIC CUSTODIAL CARE (CLOSED)
- Developed Properties
- Research Natural Areas - No heavy equipment

0 1 2 Miles