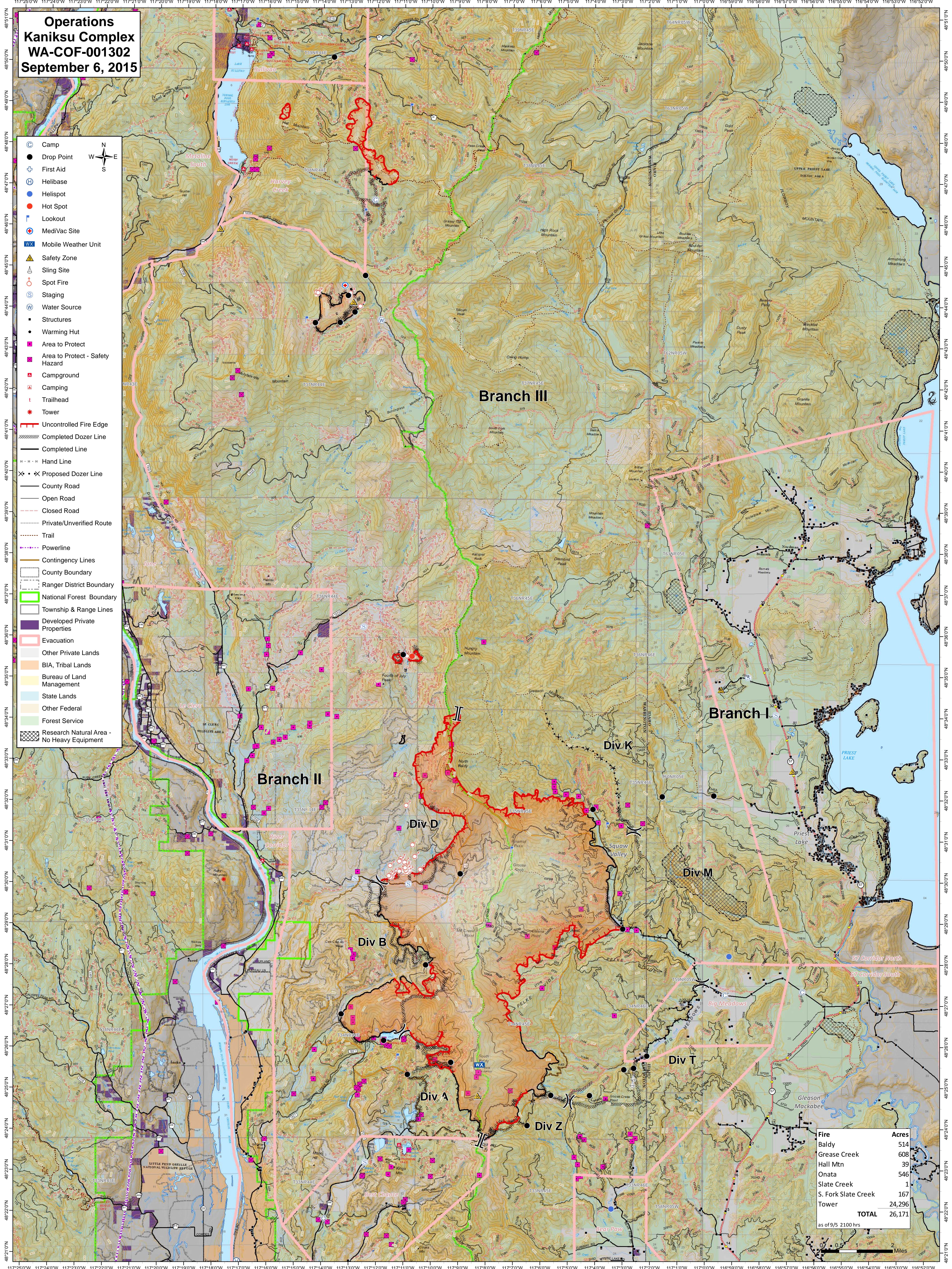
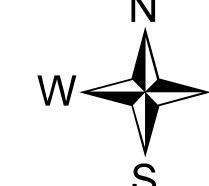


Operations
Kaniksu Complex
WA-COF-001302
September 6, 2015

- Camp
- Drop Point
- ⊕ First Aid
- ⊕ Helibase
- Helispot
- Hot Spot
- ⌚ Lookout
- ⊕ MediVac Site
- WX Mobile Weather Unit
- ▲ Safety Zone
- ▲ Sling Site
- Spot Fire
- Staging
- ⊕ Water Source
- Structures
- Warming Hut
- Area to Protect
- Area to Protect - Safety Hazard
- Campground
- Camping
- Trailhead
- ★ Tower
- Uncontrolled Fire Edge
- Completed Dozer Line
- Completed Line
- Hand Line
- Proposed Dozer Line
- County Road
- Open Road
- Closed Road
- Private/Unverified Route
- Trail
- Powerline
- Contingency Lines
- County Boundary
- Ranger District Boundary
- National Forest Boundary
- Township & Range Lines
- Developed Private Properties
- Evacuation
- Other Private Lands
- BIA, Tribal Lands
- Bureau of Land Management
- State Lands
- Other Federal
- Forest Service
- Research Natural Area - No Heavy Equipment



| Fire | Acres |
|---------------------|---------------|
| Baldy | 514 |
| Grease Creek | 608 |
| Hall Mtn | 39 |
| Onata | 546 |
| Slate Creek | 1 |
| S. Fork Slate Creek | 167 |
| Tower | 24,296 |
| TOTAL | 26,171 |

as of 9/5 2100 hrs

