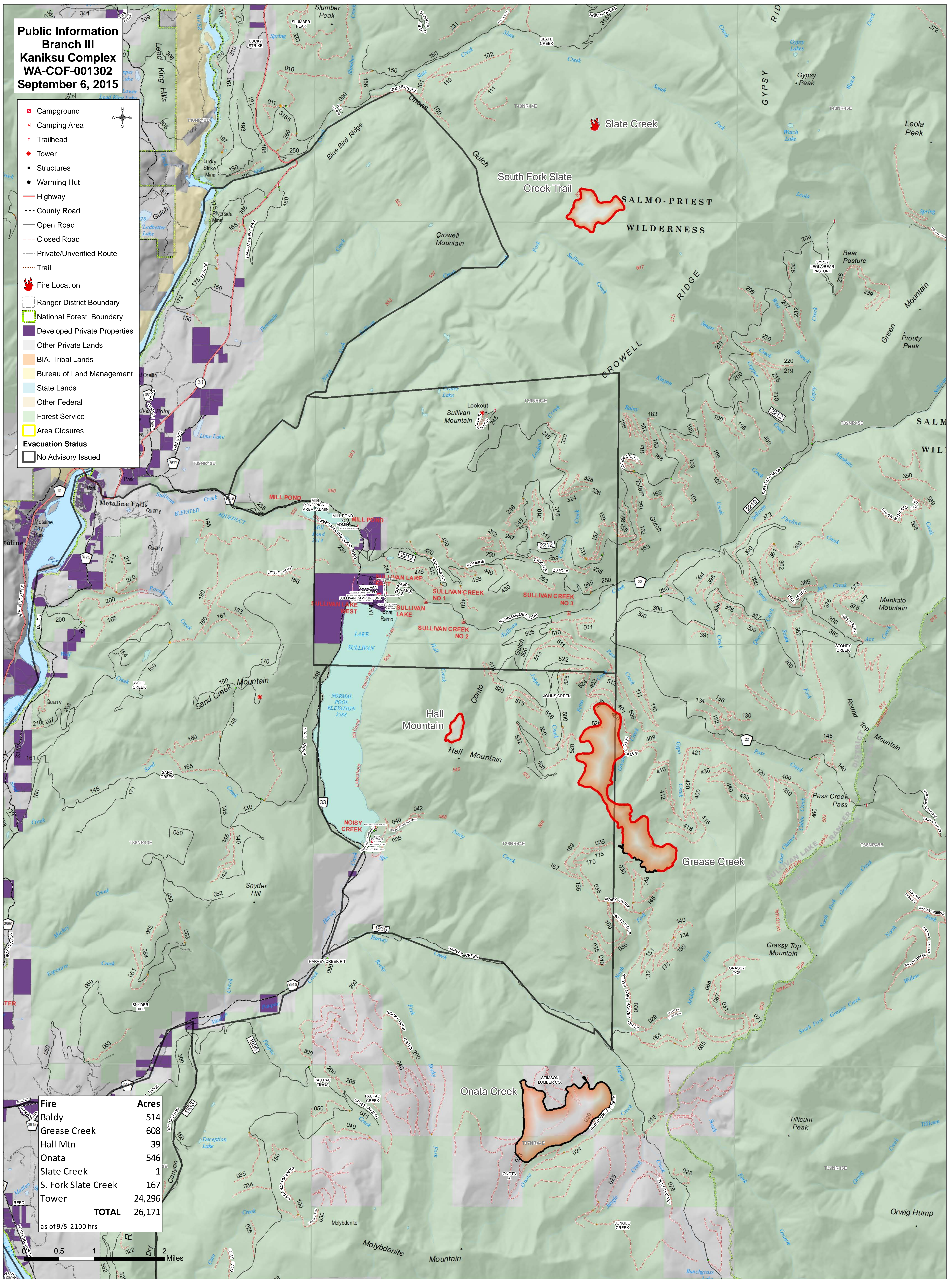


**Public Information
Branch III
Kaniksu Complex
WA-COF-001302
September 6, 2015**

- Campground
- Camping Area
- Trailhead
- Tower
- Structures
- Warming Hut
- Highway
- County Road
- Open Road
- Closed Road
- Private/Unverified Route
- Trail
- Fire Location
- Ranger District Boundary
- National Forest Boundary
- Developed Private Properties
- Other Private Lands
- BIA, Tribal Lands
- Bureau of Land Management
- State Lands
- Other Federal
- Forest Service
- Area Closures
- Evacuation Status**
- No Advisory Issued



Fire	Acres
Baldy	514
Grease Creek	608
Hall Mtn	39
Onata	546
Slate Creek	1
S. Fork Slate Creek	167
Tower	24,296
TOTAL	26,171

as of 9/5 2100 hrs

0.5 1 2 Miles