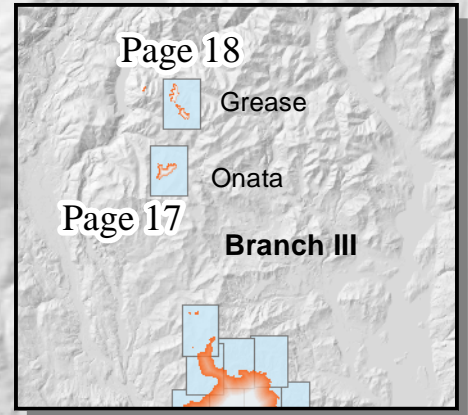
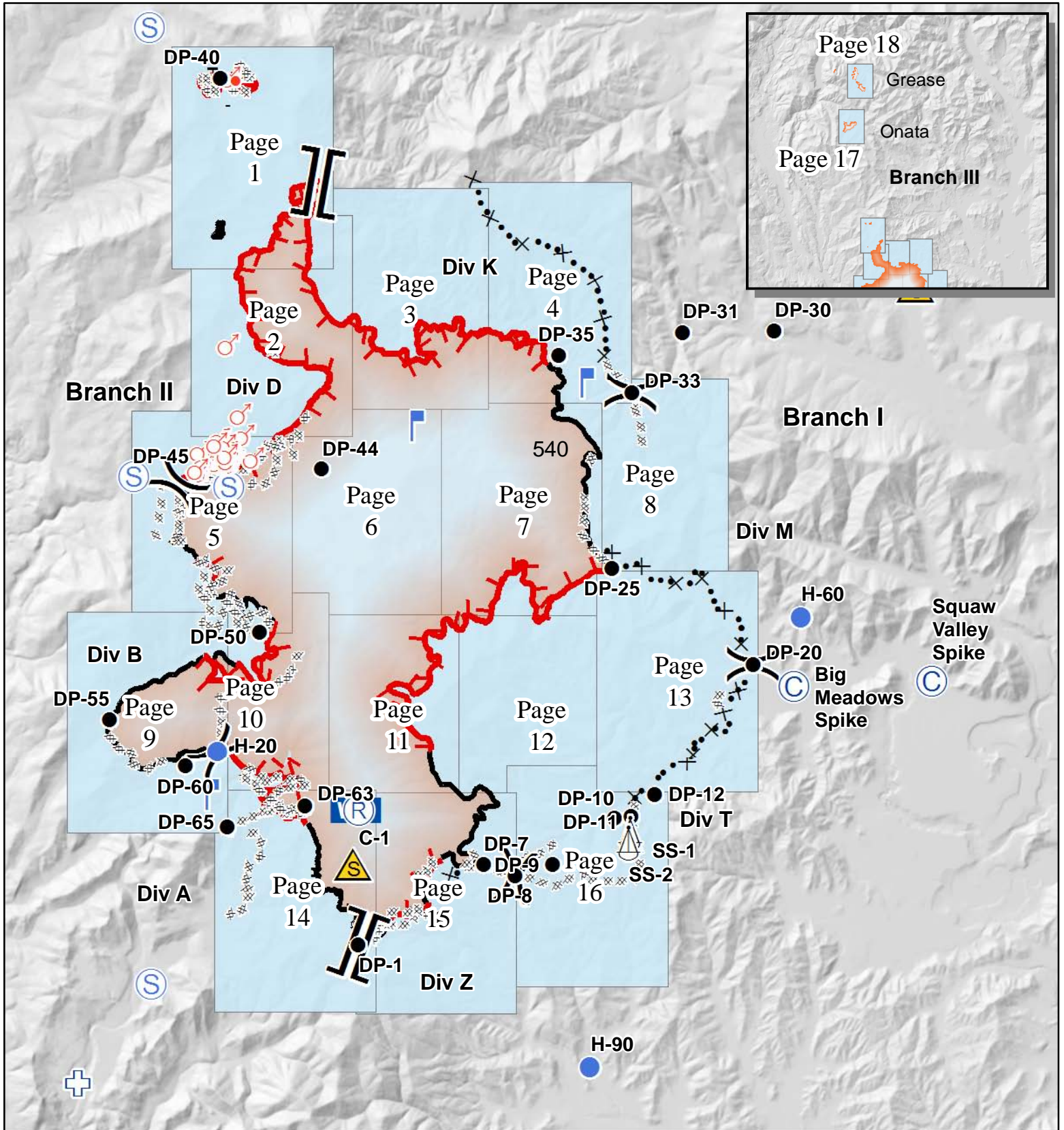


Kaniksu Complex WA-COF-001302 IAP Maps September 7, 2015

Fire	Acres
Baldy	515
Grease Creek	598
Hall Mtn	39
Onata	546
Slate Creek	1
S. Fork Slate Creek	167
Tower	24,296
TOTAL	26,162

as of 9/6 2100 hrs

Hot Spot	Safety Zone	Uncontrolled Fire Edge
Sling Site	Spot Fire	Completed Dozer Line
Camp	Staging Area	Hand Line
Drop Point	First Aid Station	Proposed Dozer Line
Lookout	Roads	Structures
		Warming Hut

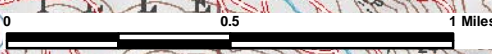


117°12'W

117°11'W

117°10'W

117°9'W



48°36'N

48°36'N

48°35'N

48°35'N

48°34'N

48°34'N

48°33'N

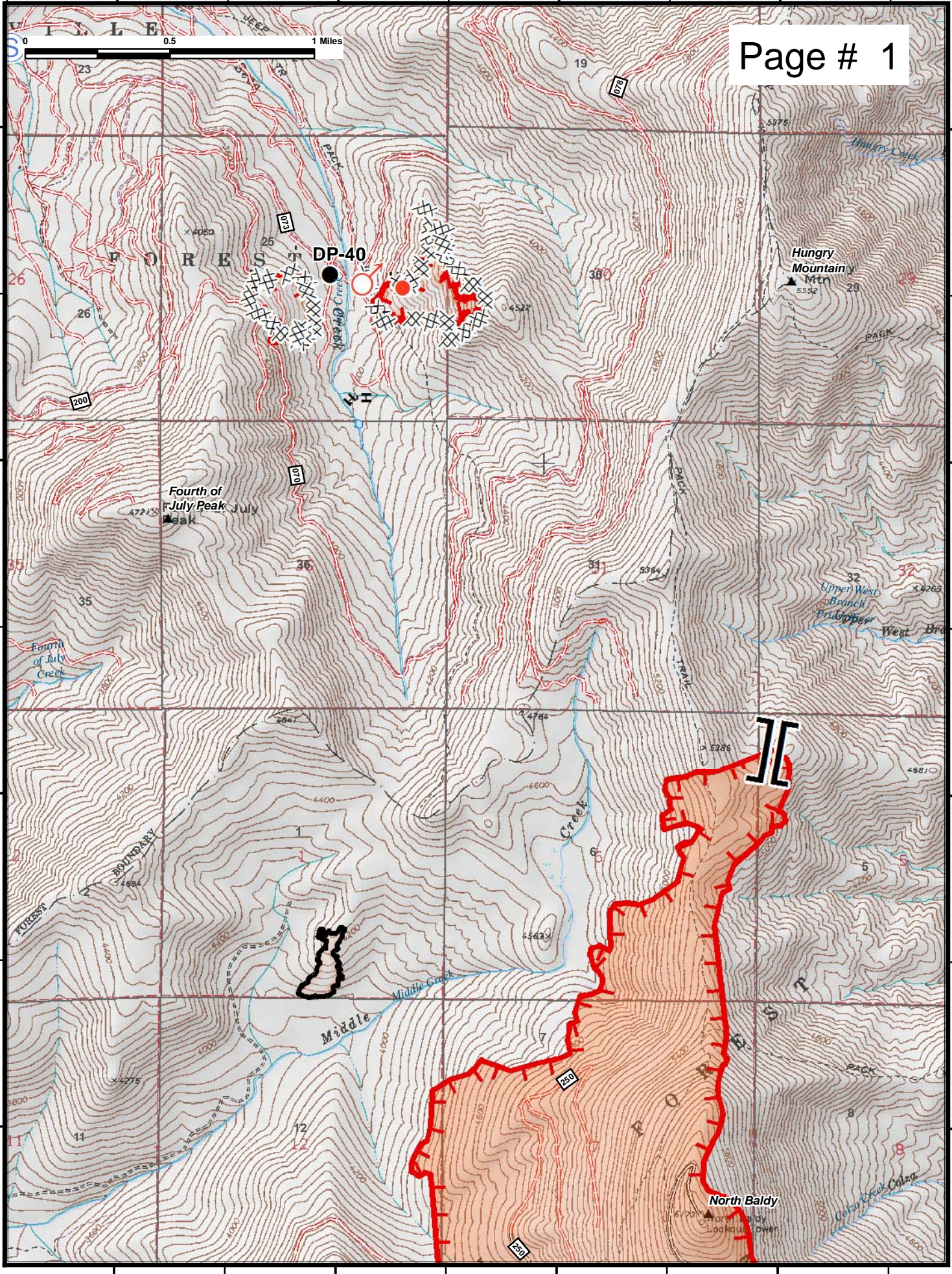
48°33'N

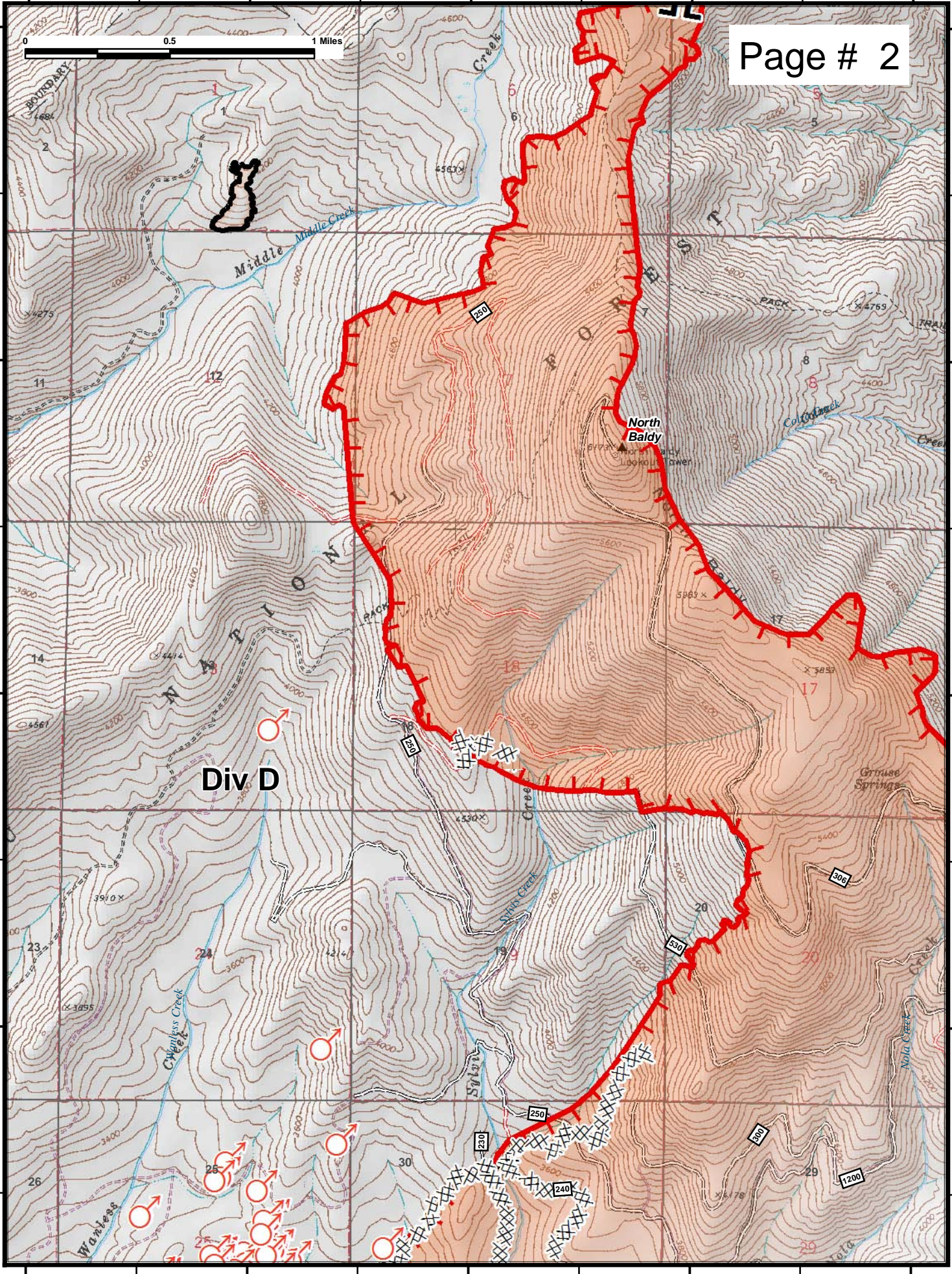
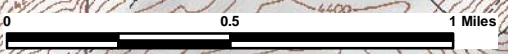
117°12'W

117°11'W

117°10'W

117°9'W





Div D

North Baldy

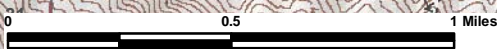


117°9'W

117°8'W

117°7'W

117°6'W



Page # 3

48°34'N

48°34'N

48°33'N

48°33'N

48°32'N

48°32'N

48°31'N

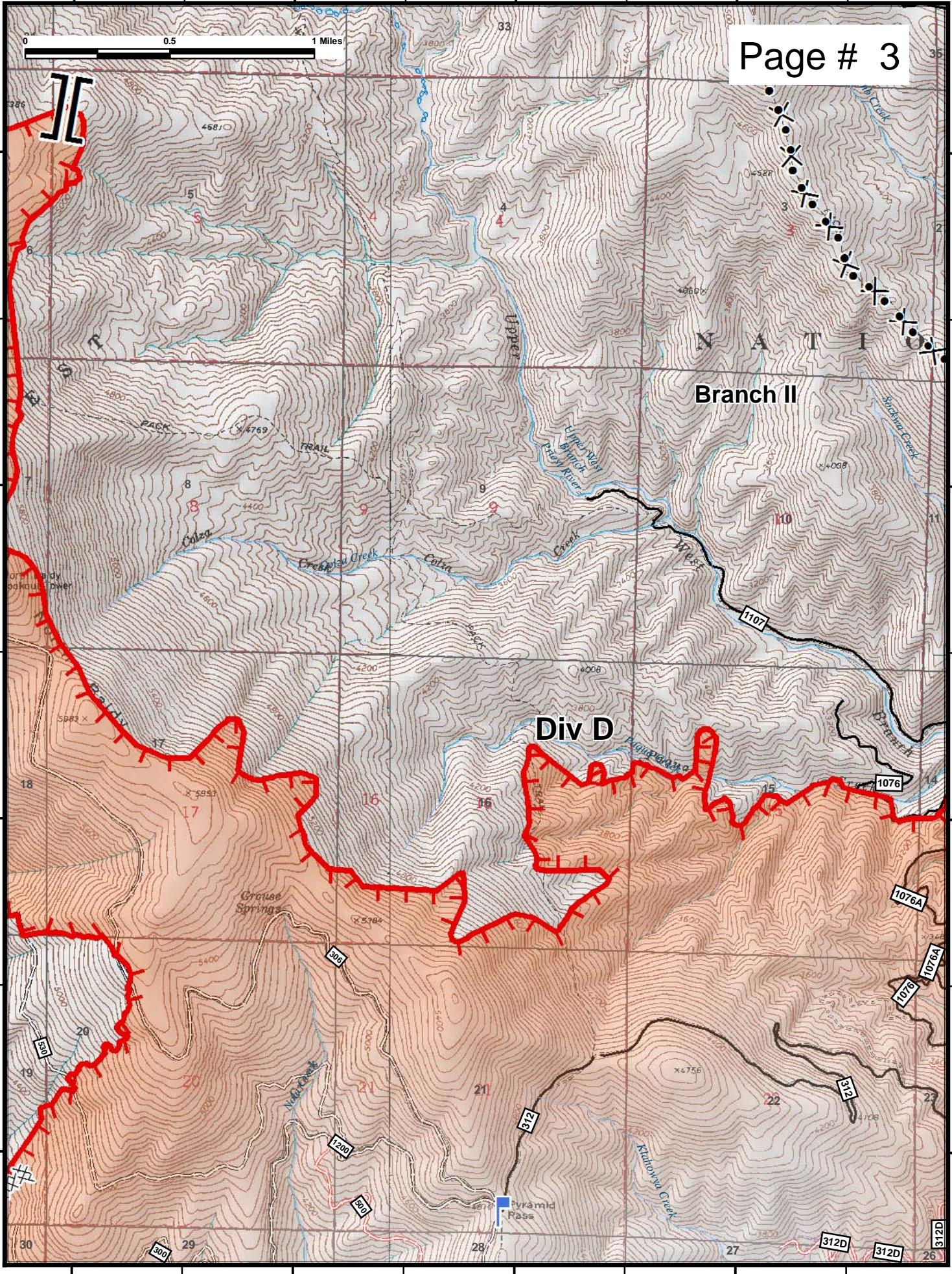
48°31'N

117°9'W

117°8'W

117°7'W

117°6'W



Branch II

Div D

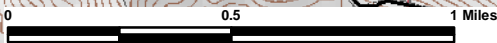
N A T I A

117°6'W

117°5'W

117°4'W

117°3'W



Page # 4

48°34'N

48°34'N

48°33'N

48°33'N

48°32'N

48°32'N

48°31'N

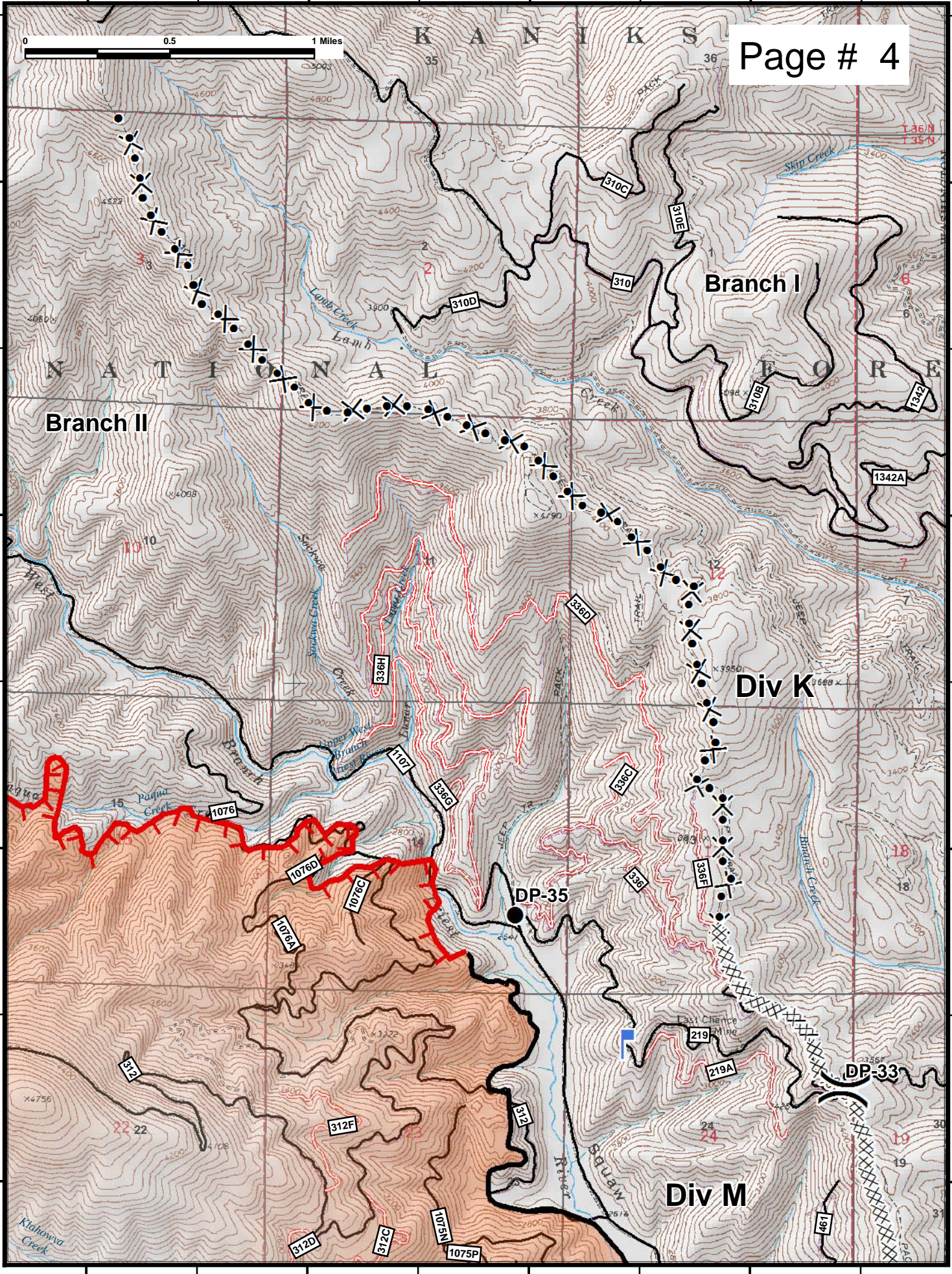
48°31'N

117°6'W

117°5'W

117°4'W

117°3'W



117°13'W

117°12'W

117°11'W

117°10'W

Page # 5

48°31'N

48°31'N

48°30'N

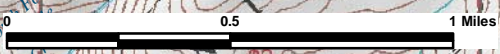
48°30'N

48°29'N

48°29'N

48°28'N

48°28'N

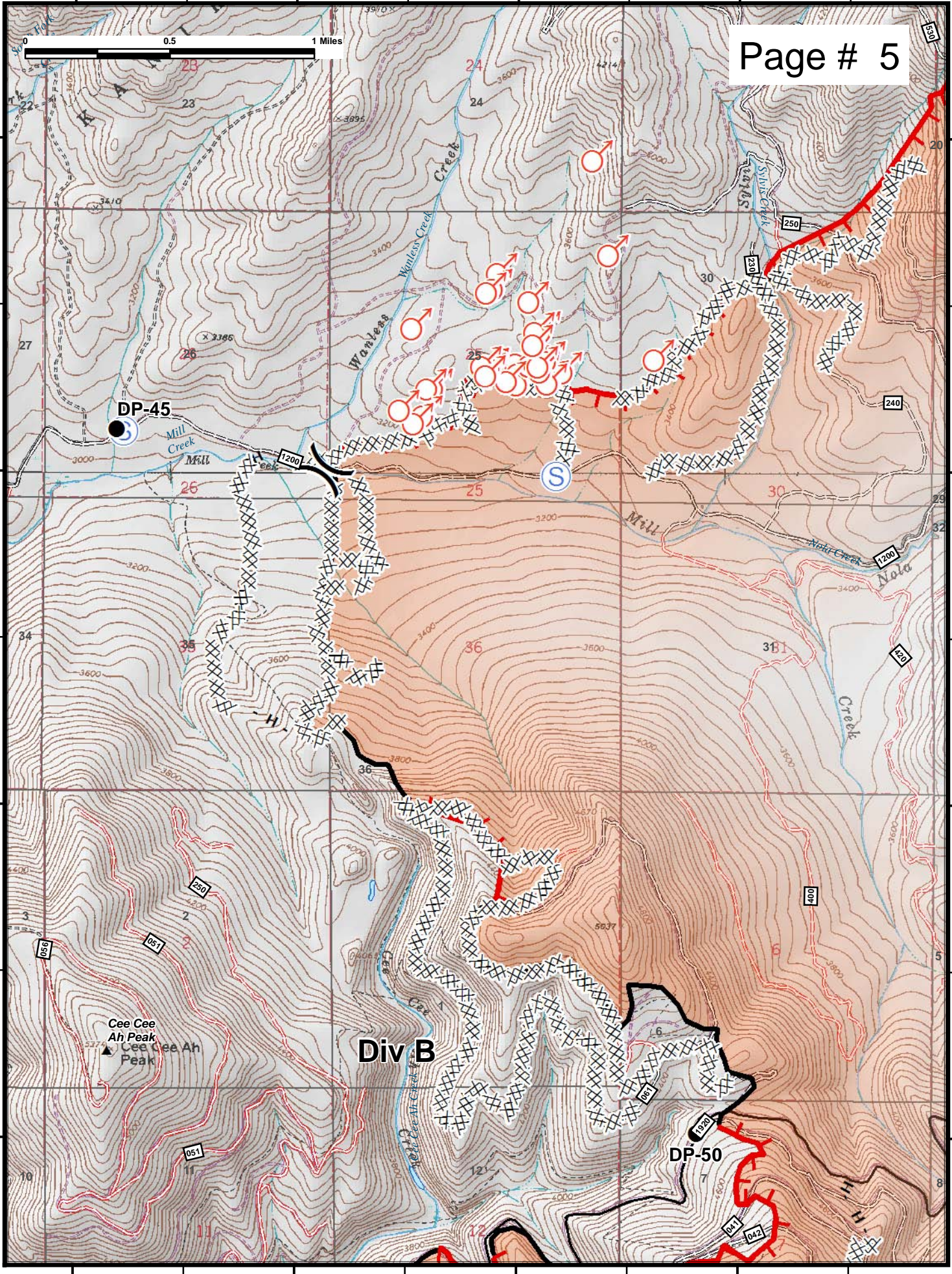


DP-45

Div B

DP-50

Cee Cee Ah Peak
▲ Cee Cee Ah Peak



117°13'W

117°12'W

117°11'W

117°10'W

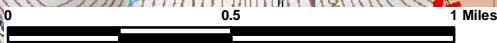
117°10'W

117°9'W

117°8'W

117°7'W

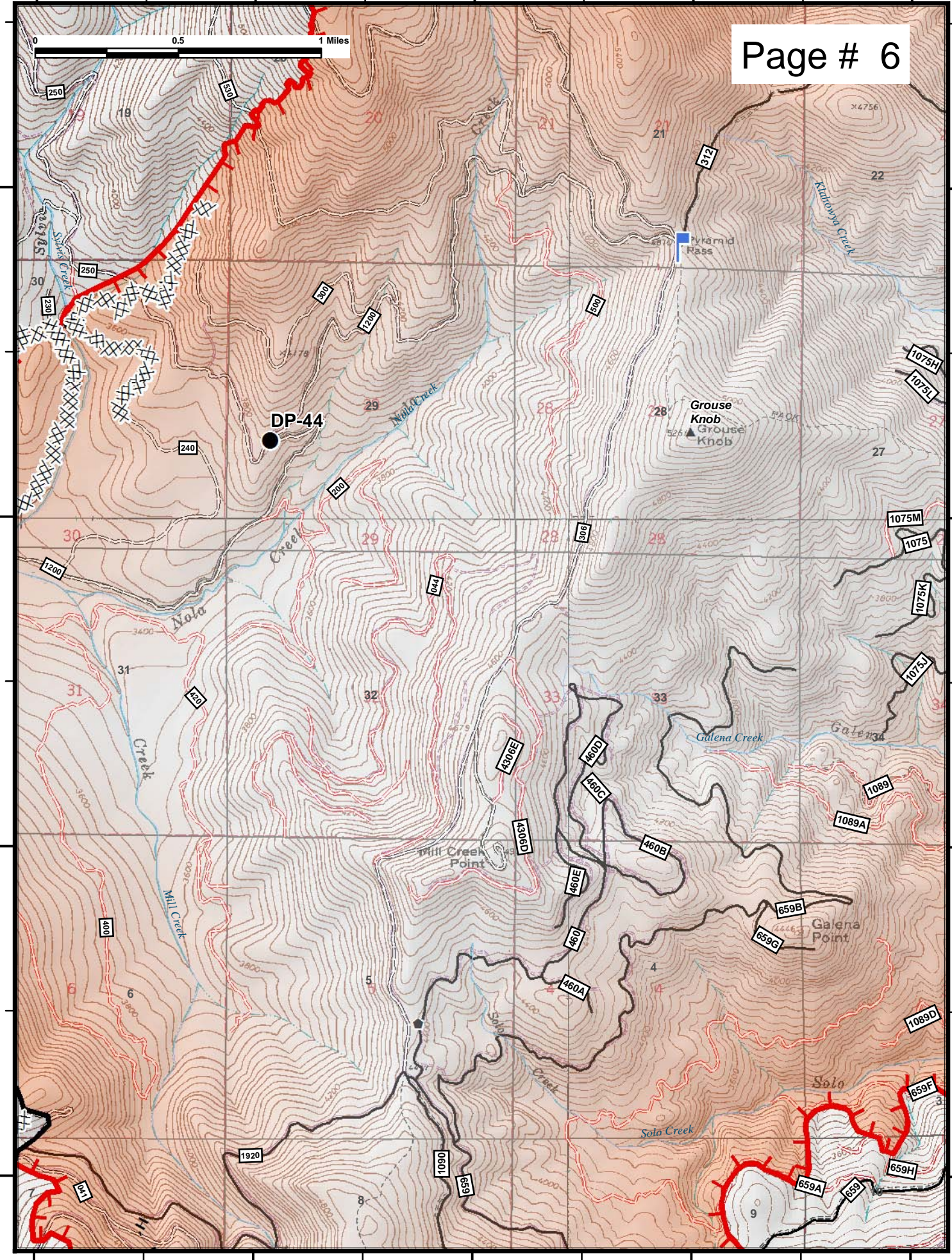
117°6'W



Page # 6

48°31'N
48°30'N
48°29'N
48°28'N

48°31'N
48°30'N
48°29'N
48°28'N



117°10'W

117°9'W

117°8'W

117°7'W

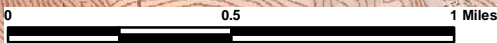
117°6'W

117°6'W

117°5'W

117°4'W

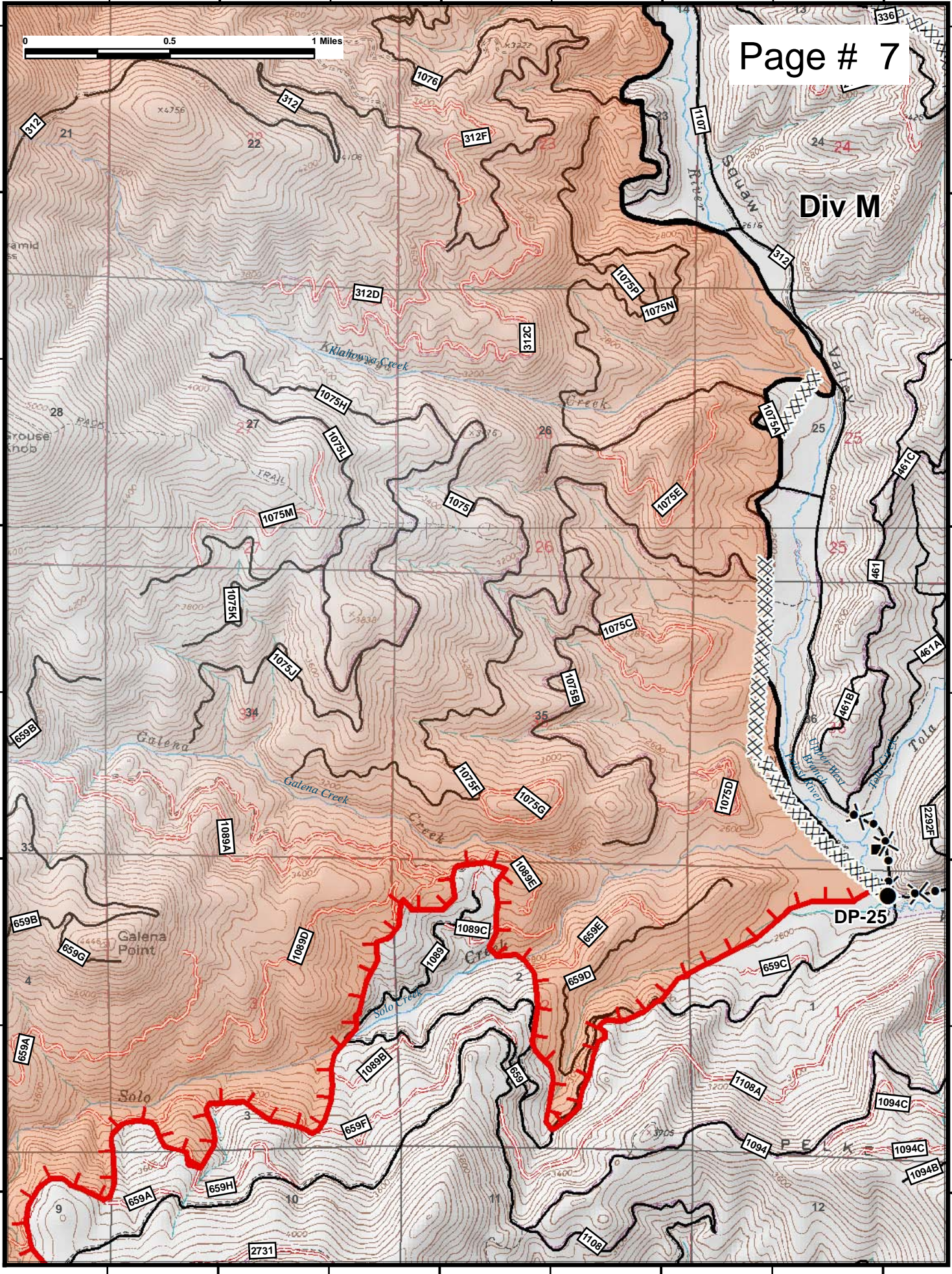
117°3'W



Page # 7

48°31'N
48°30'N
48°29'N
48°28'N

48°31'N
48°30'N
48°29'N
48°28'N



Div M

DP-25

117°6'W

117°5'W

117°4'W

117°3'W

117°4'W

117°3'W

117°2'W

117°1'W

48°31'N

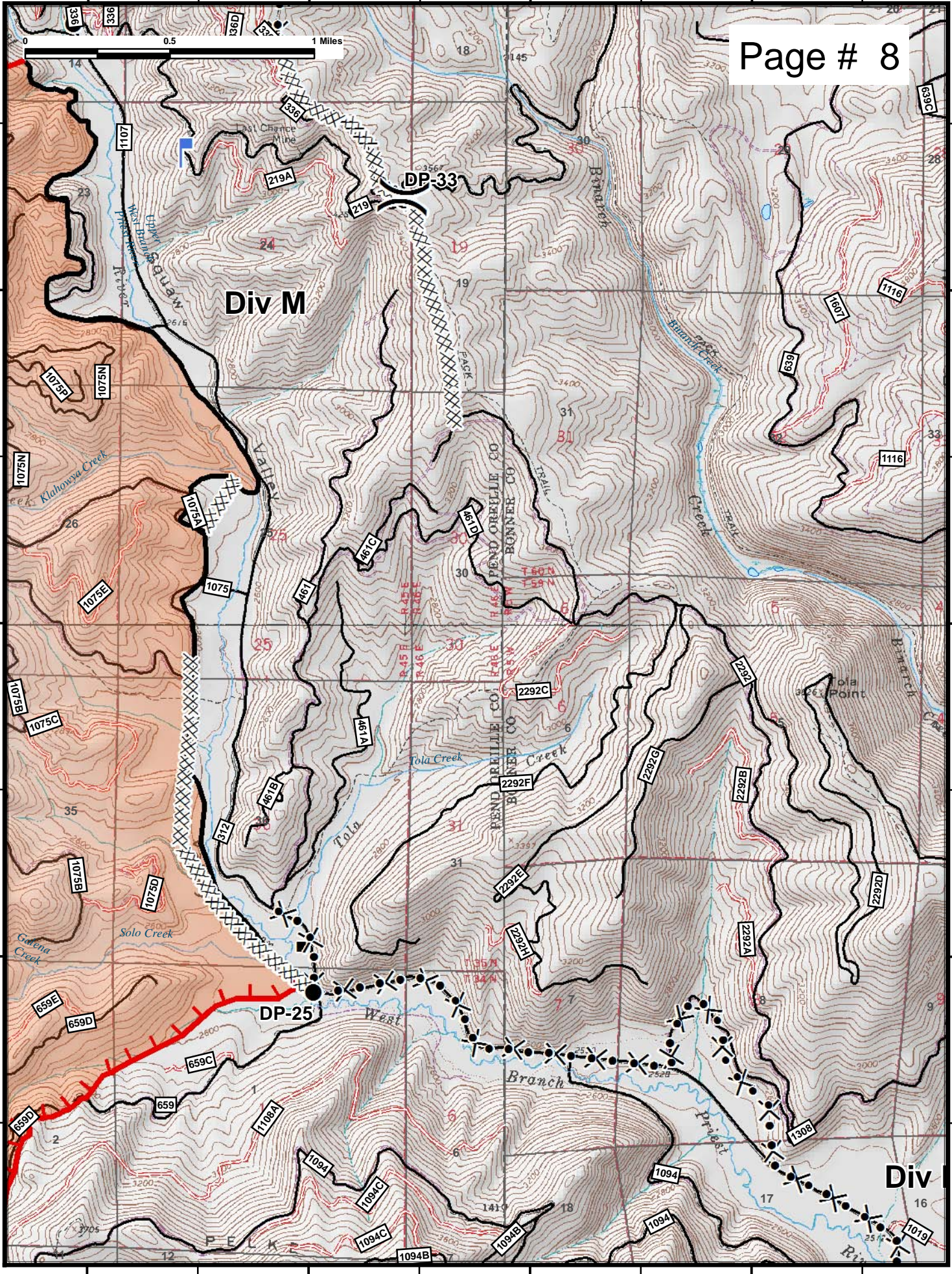
48°31'N

48°30'N

48°30'N

48°29'N

48°29'N



117°4'W

117°3'W

117°2'W

117°1'W

117°14'W

117°13'W

117°12'W

117°11'W

Div B

Div A

DP-55

DP-60

DP-65

Browns Lake

Cee Cee Ah Peak
▲ Cee Cee Ah Peak

K A N I K S

N A T I O N A L



48°28'N
48°27'N
48°26'N
48°25'N

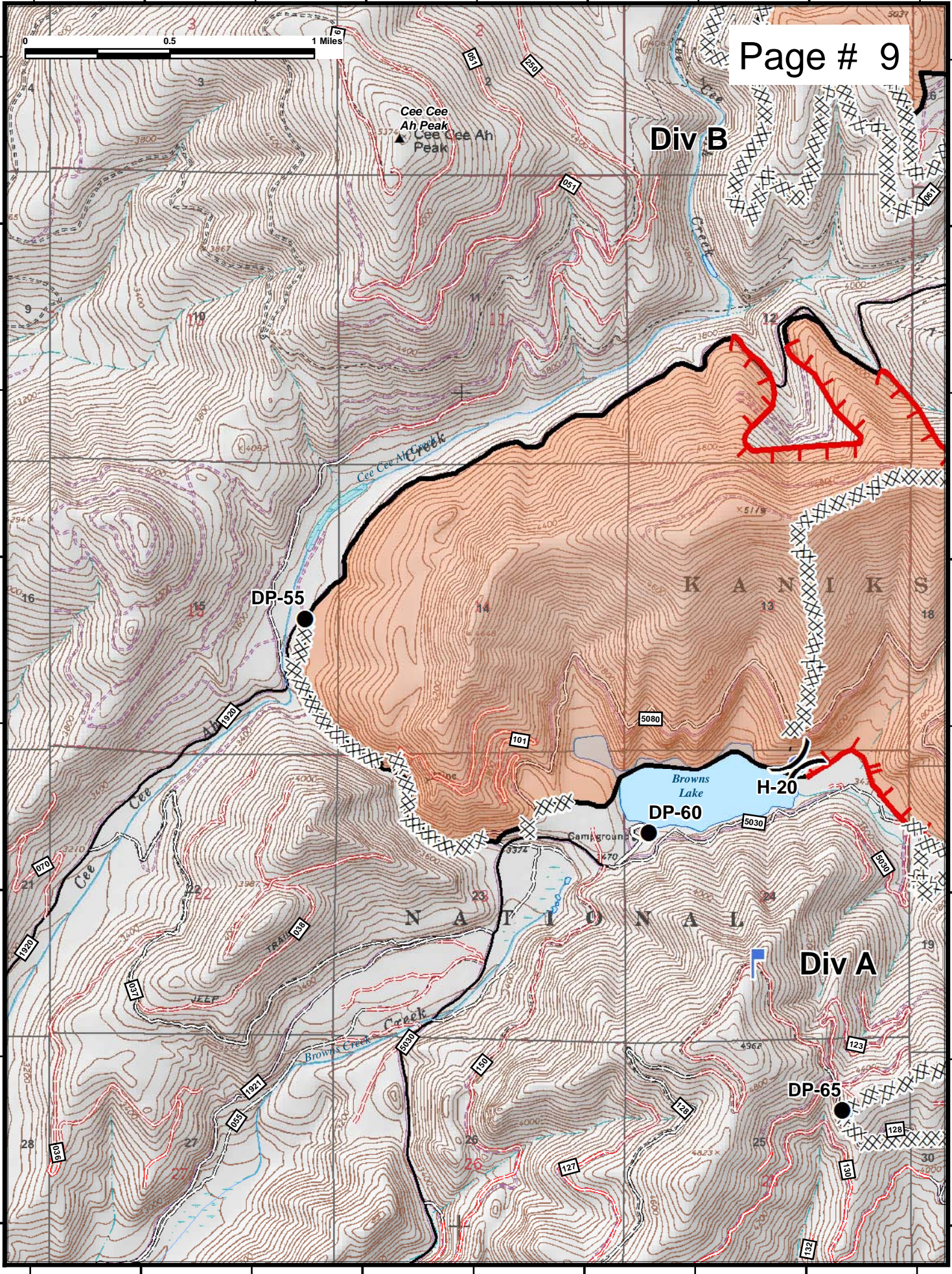
48°28'N
48°27'N
48°26'N
48°25'N

117°14'W

117°13'W

117°12'W

117°11'W

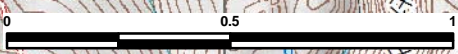


117°12'W

117°11'W

117°10'W

117°9'W



48°28'N

48°28'N

48°27'N

48°27'N

48°26'N

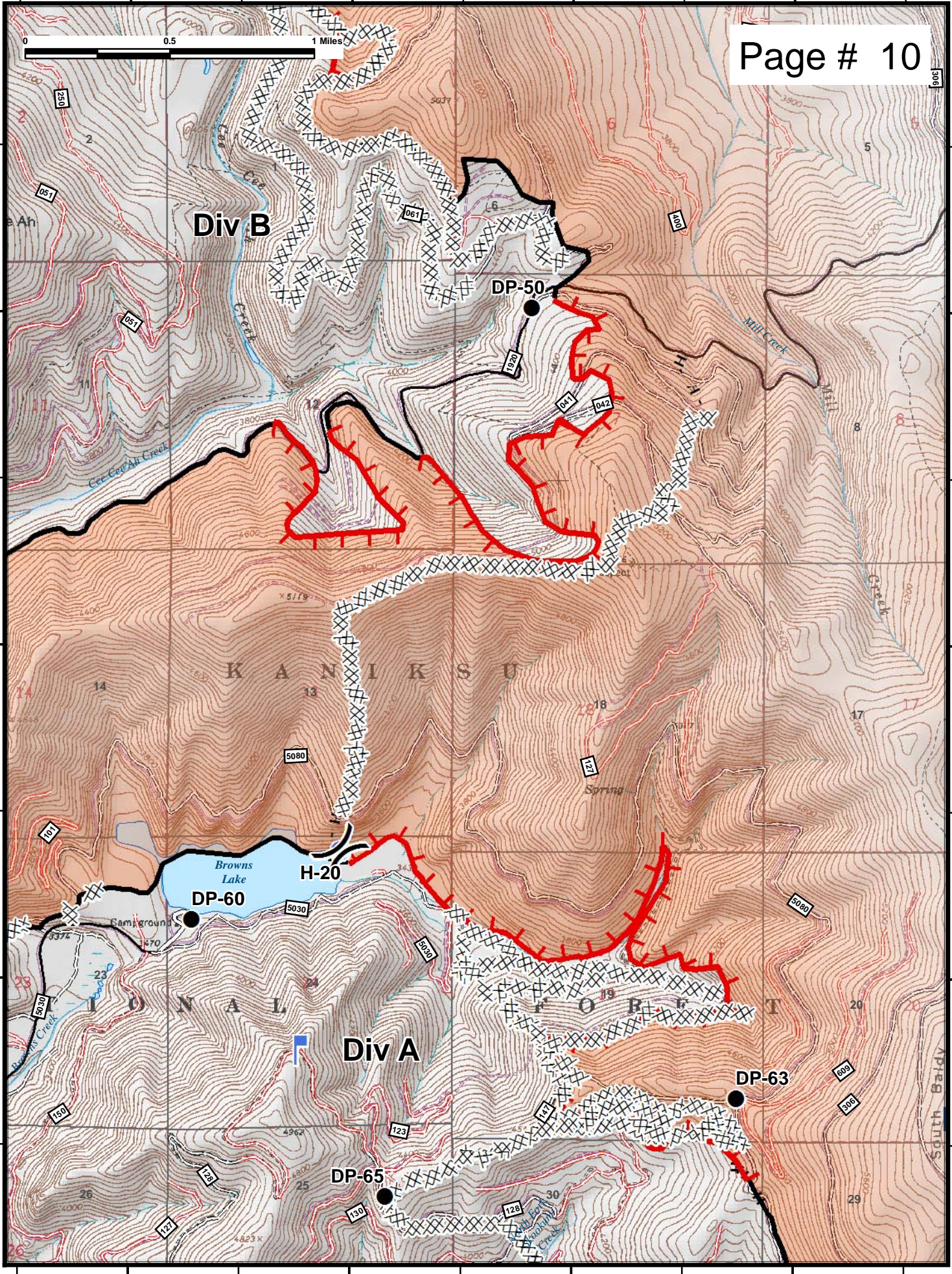
48°26'N

117°12'W

117°11'W

117°10'W

117°9'W

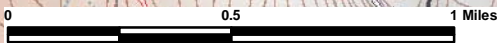


117°9'W

117°8'W

117°7'W

117°6'W



Page # 11

48°28'N

48°28'N

48°27'N

48°27'N

48°26'N

48°26'N

48°25'N

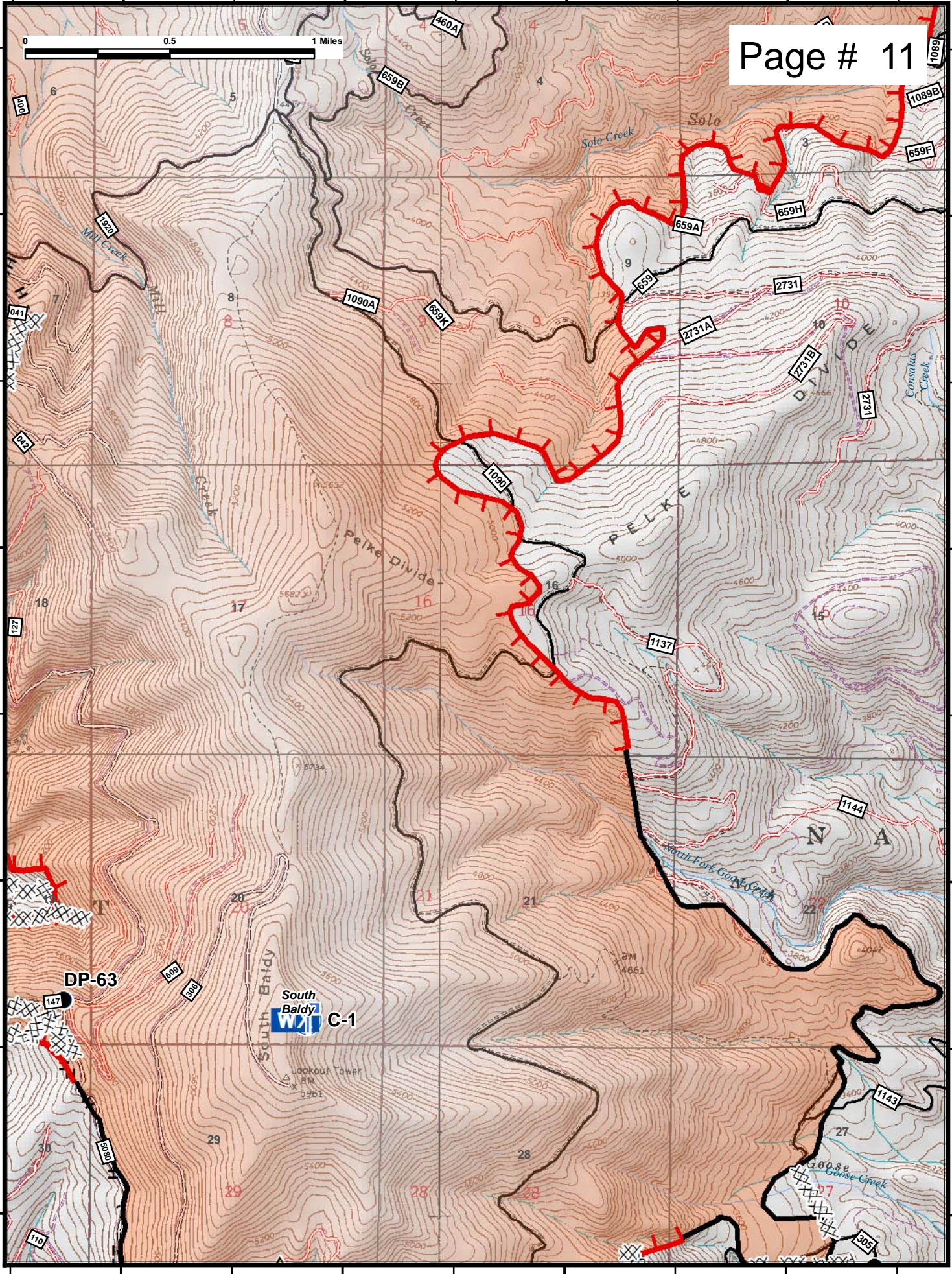
48°25'N

117°9'W

117°8'W

117°7'W

117°6'W

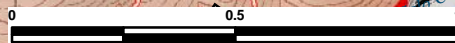


117°6'W

117°5'W

117°4'W

117°3'W



48°28'N

48°28'N

48°27'N

48°27'N

48°26'N

48°26'N

48°25'N

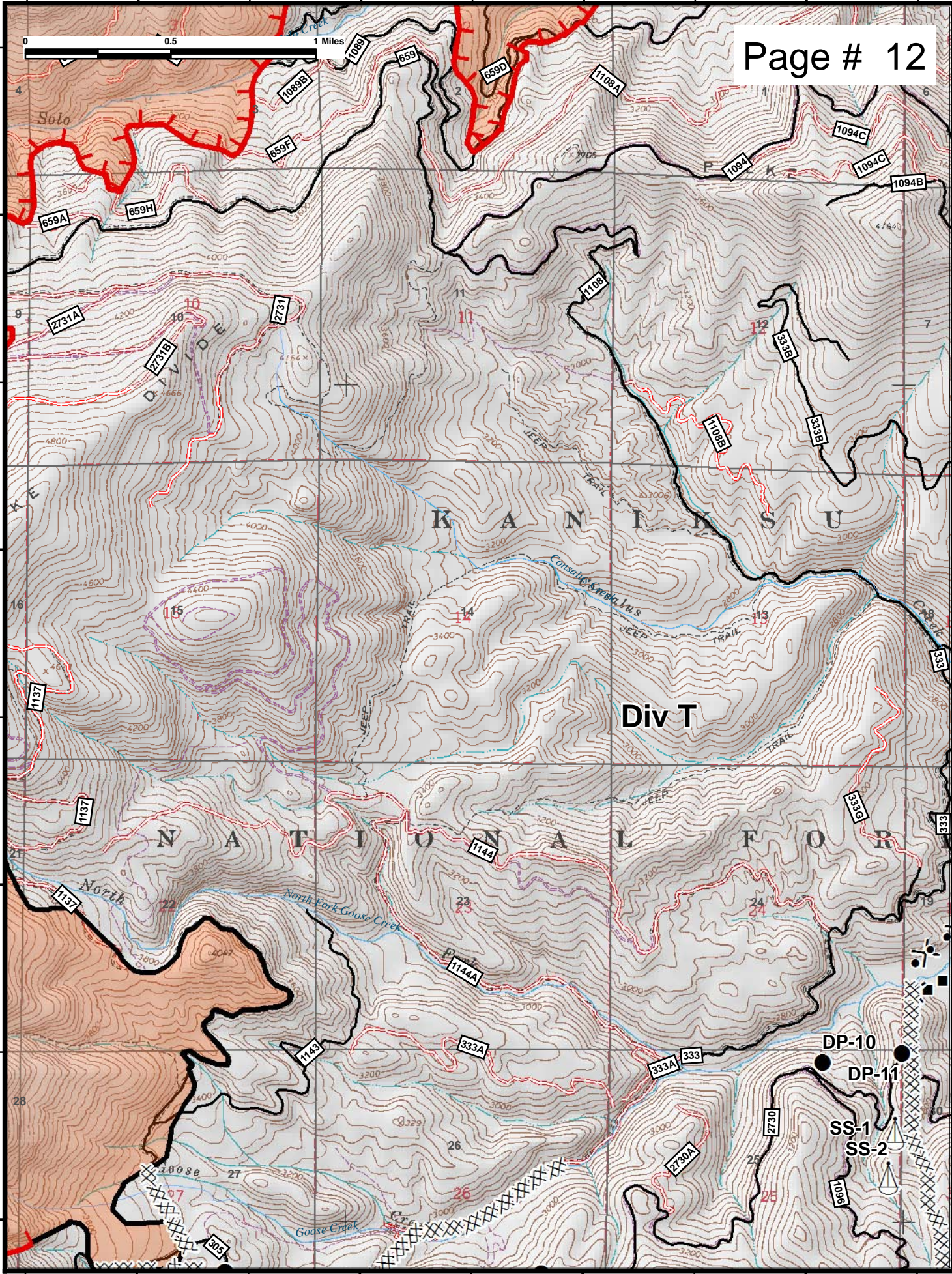
48°25'N

117°6'W

117°5'W

117°4'W

117°3'W



117°3'W

117°2'W

117°1'W

117°0'W

48°29'N

48°29'N

Page # 13

48°28'N

48°28'N

48°27'N

48°27'N

48°26'N

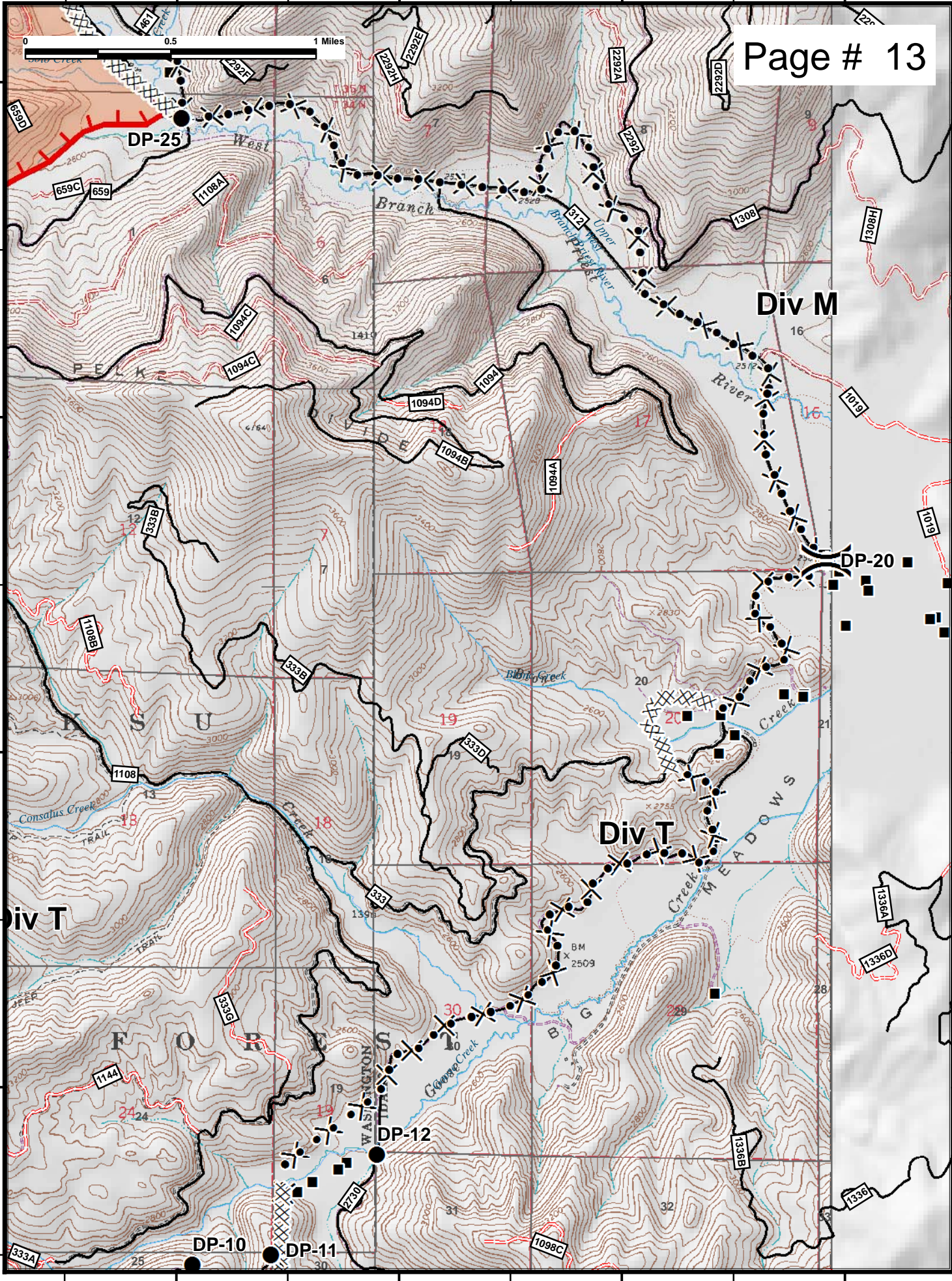
48°26'N

117°3'W

117°2'W

117°1'W

117°0'W



117°11'W

117°10'W

117°9'W

117°8'W

48°26'N

48°26'N

48°25'N

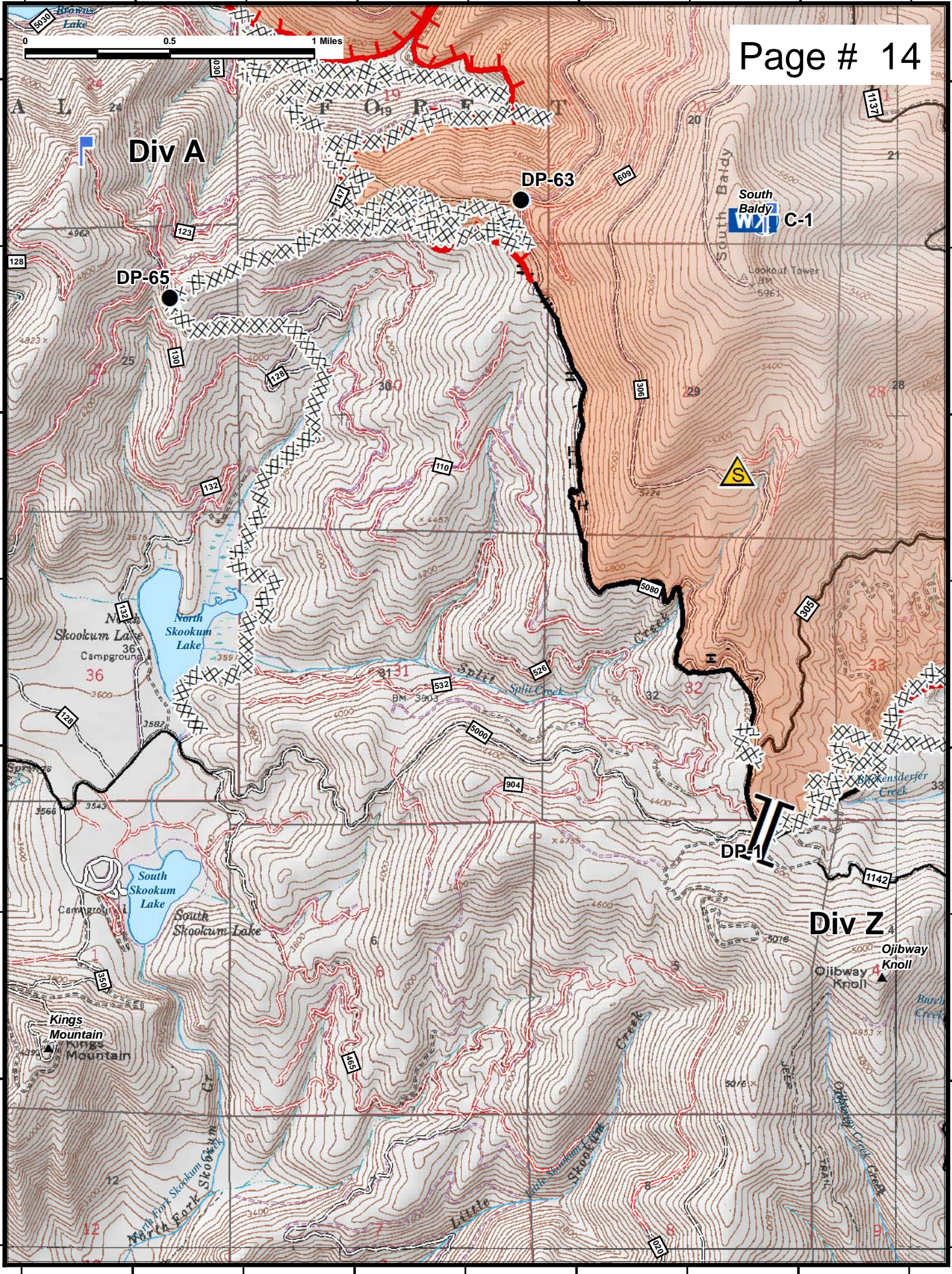
48°25'N

48°24'N

48°24'N

48°23'N

48°23'N



117°8'W

117°7'W

117°6'W

117°5'W

48°26'N

48°26'N

48°25'N

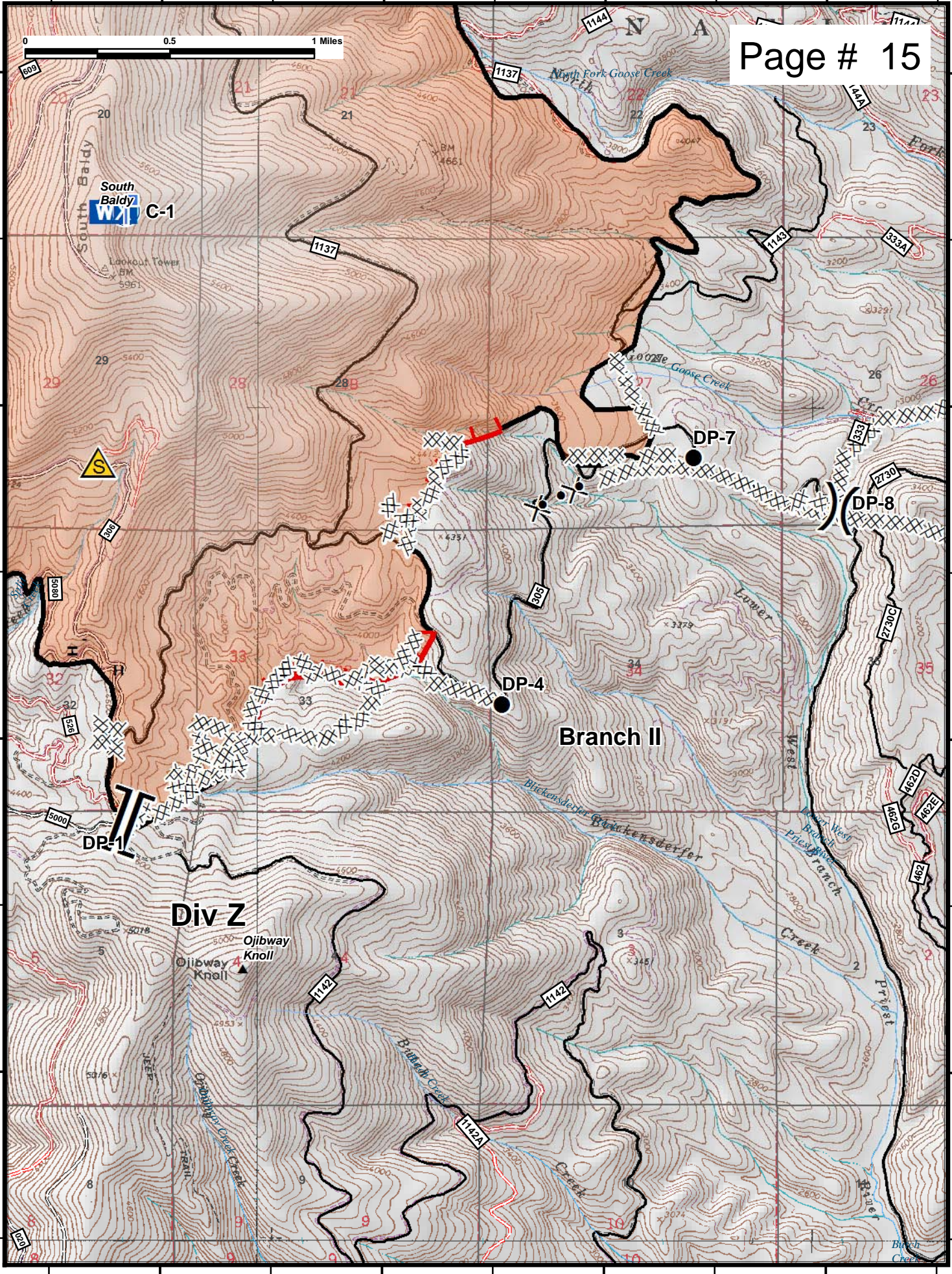
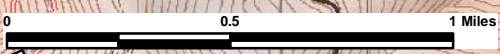
48°25'N

48°24'N

48°24'N

48°23'N

48°23'N



117°8'W

117°7'W

117°6'W

117°5'W

117°5'W

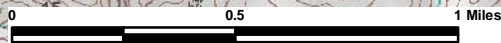
117°4'W

117°3'W

117°2'W

Div T

Page # 16



48°26'N

48°26'N

48°25'N

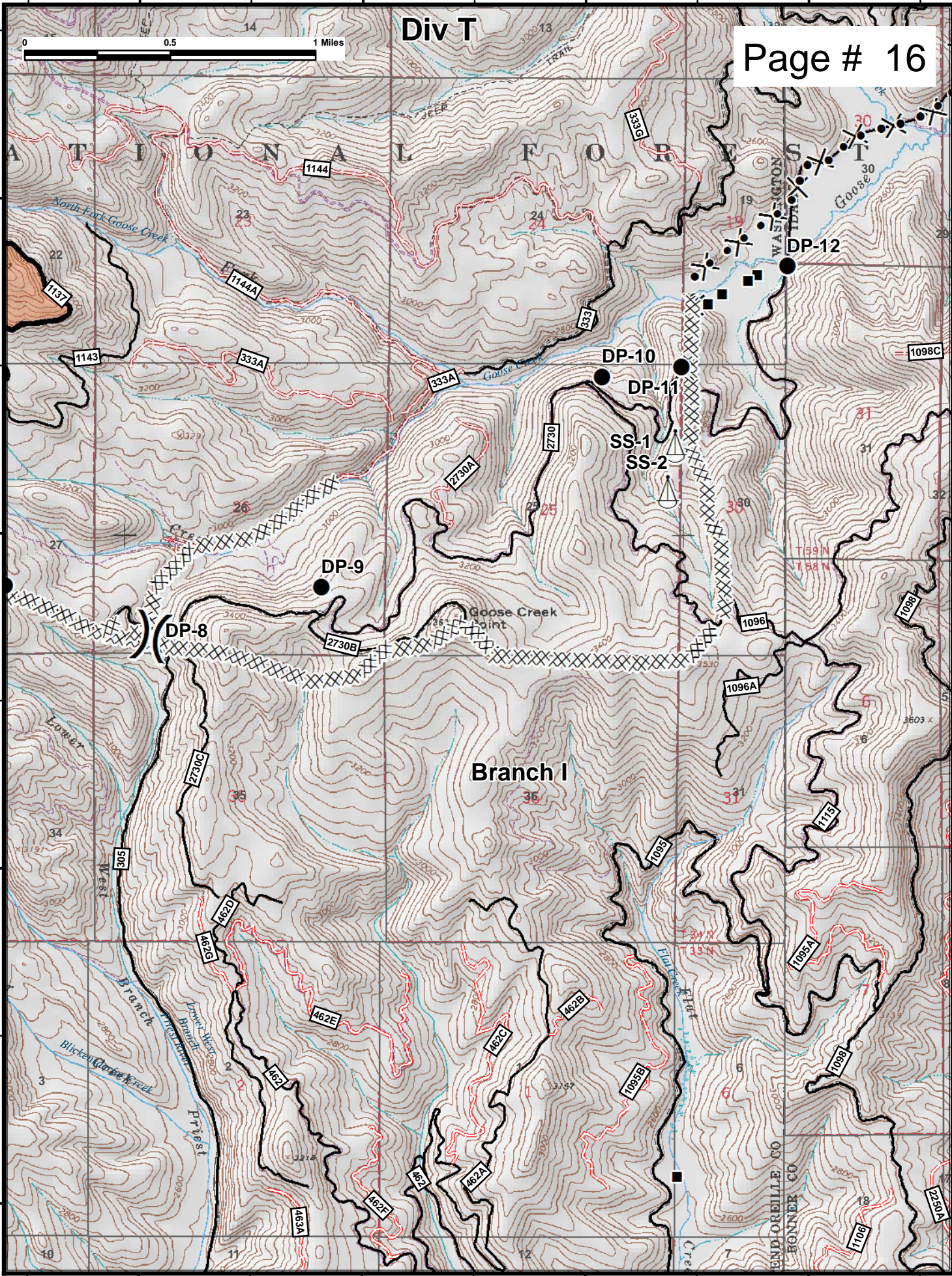
48°25'N

48°24'N

48°24'N

48°23'N

48°23'N



117°5'W

117°4'W

117°3'W

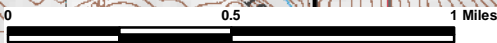
117°2'W

117°15'W

117°14'W

117°13'W

117°12'W



48°45'N

48°45'N

48°44'N

48°44'N

48°43'N

48°43'N

Div Onata

Onata/Grease Staging

DP-101

DP-130

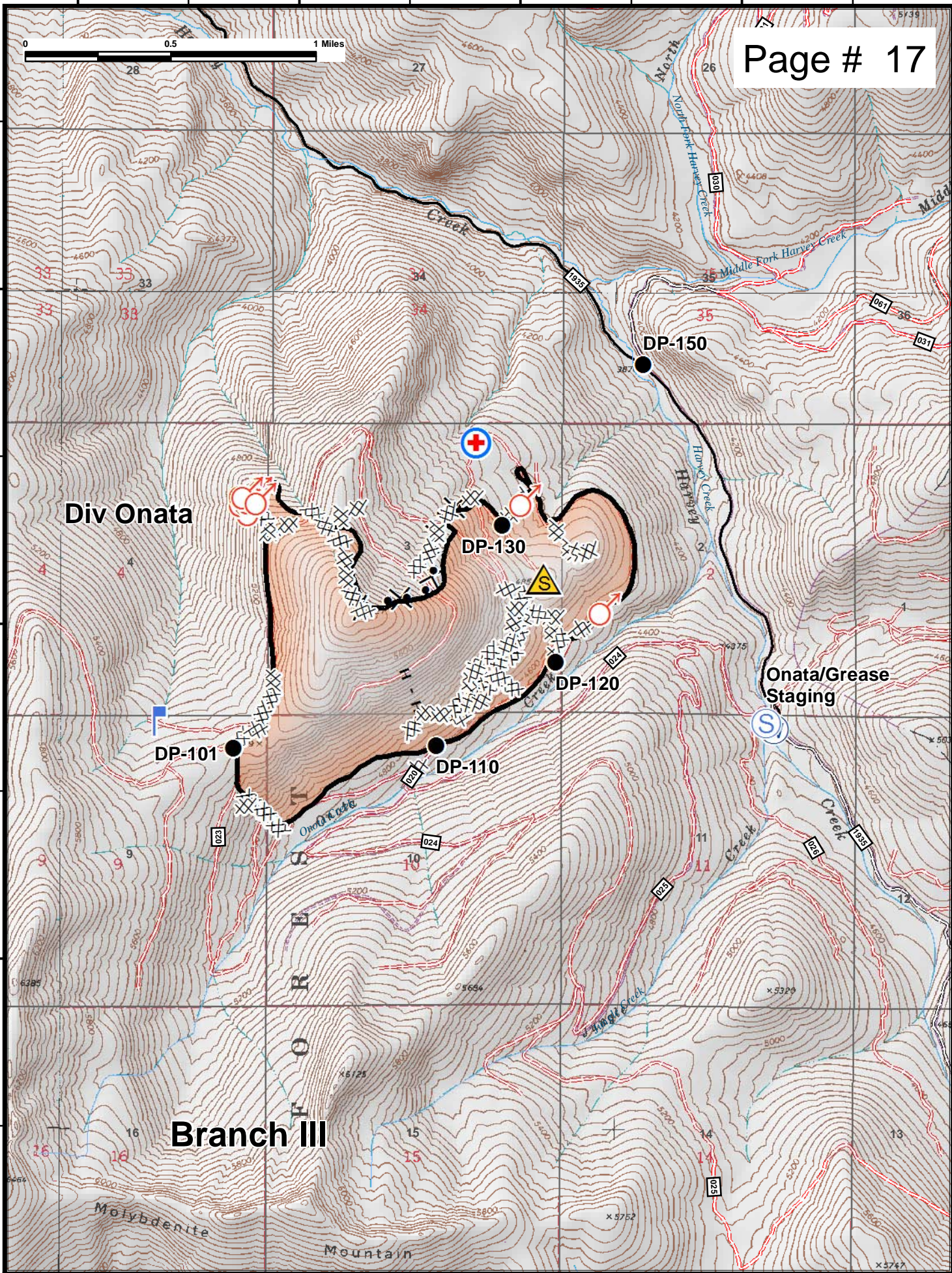
DP-120

DP-110

Branch III

Molybdenite

Mountain



117°15'W

117°14'W

117°13'W

117°12'W

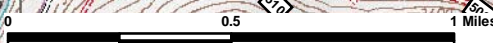
117°14'W

117°13'W

117°12'W

117°11'W

117°10'W



48°49'N

48°49'N

48°48'N

48°48'N

48°47'N

48°47'N

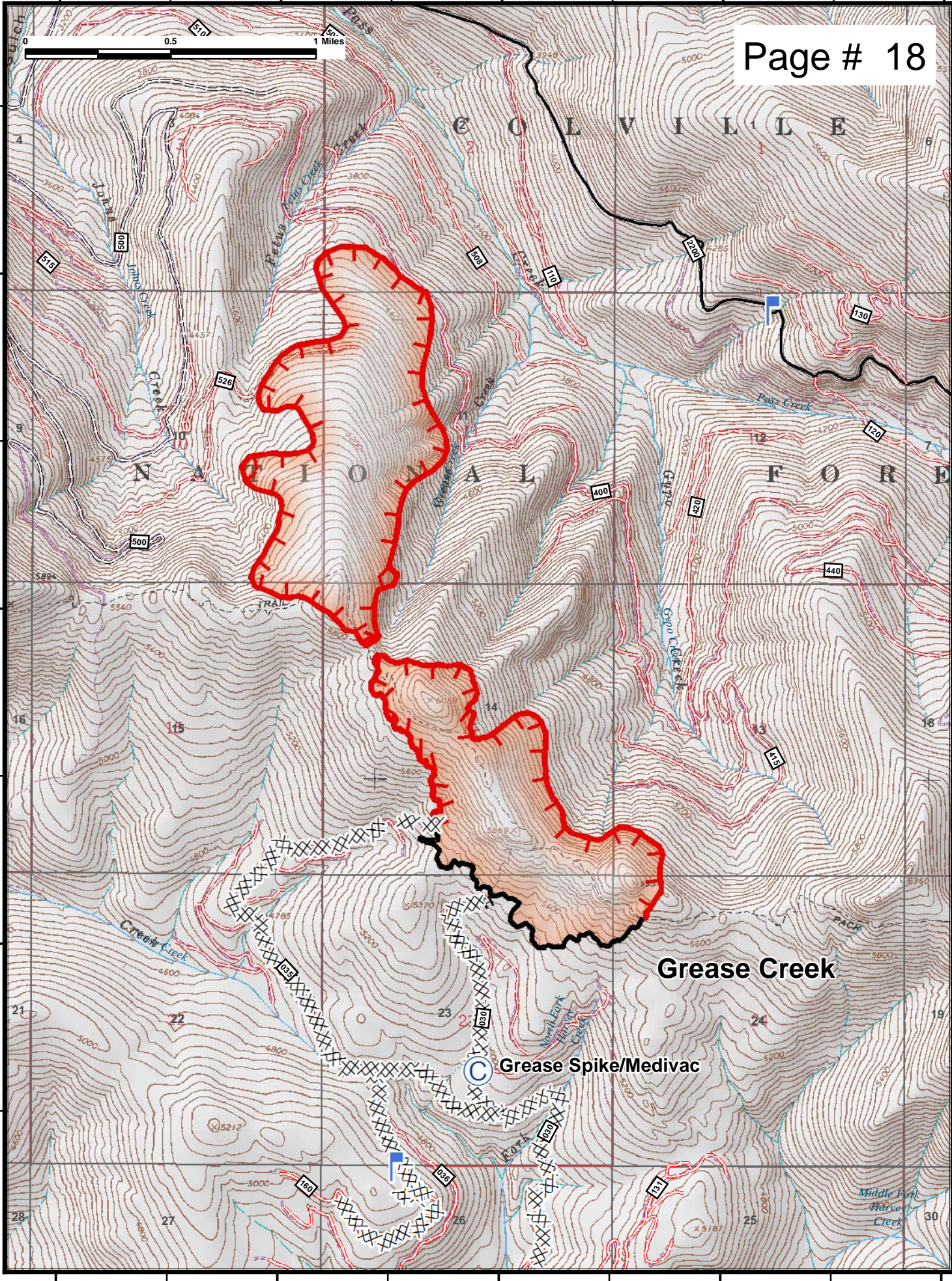
117°14'W

117°13'W

117°12'W

117°11'W

117°10'W



Grease Creek

Grease Spike/Medivac

Middle Fork Harvie Creek