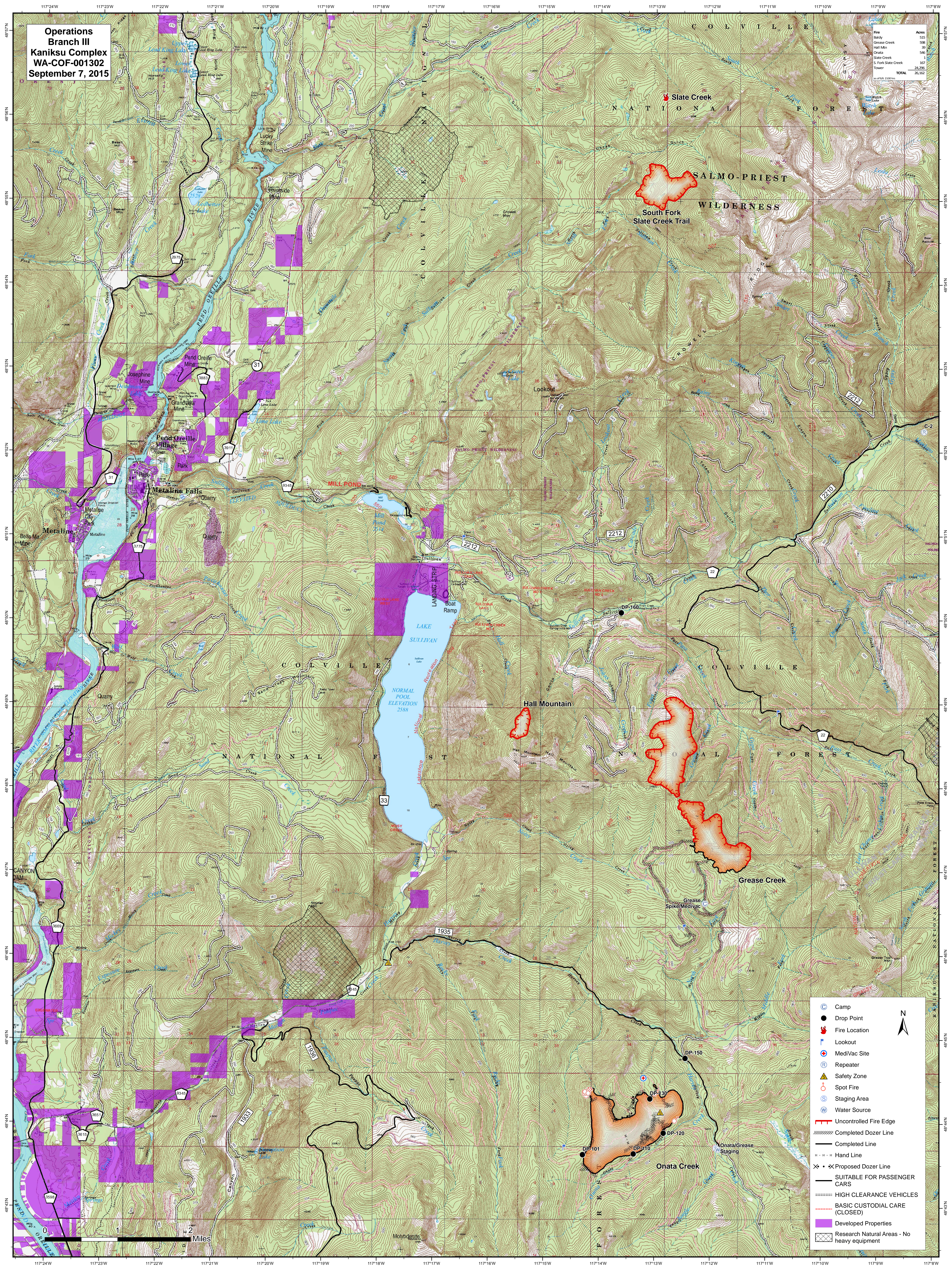


Operations
Branch III
Kaniksu Complex
WA-COF-001302
September 7, 2015

Fire	Acres
Baldy	515
Grease Creek	598
Hall Mtn	39
Onata	546
Slate Creek	167
S. Fork Slate Creek	21,296
Tower	10
TOTAL	26,162



- Camp
- Drop Point
- 🔥 Fire Location
- 👁 Lookout
- 🚑 Medi-Vac Site
- 📡 Repeater
- ⚠ Safety Zone
- 📍 Spot Fire
- 📦 Staging Area
- 💧 Water Source
- 🔴 Uncontrolled Fire Edge
- 🖨 Completed Dozer Line
- Completed Line
- ⋯ Hand Line
- ⊗ Proposed Dozer Line
- SUITABLE FOR PASSENGER CARS
- ⋯ HIGH CLEARANCE VEHICLES
- BASIC CUSTODIAL CARE (CLOSED)
- 🟪 Developed Properties
- 🖨 Research Natural Areas - No heavy equipment