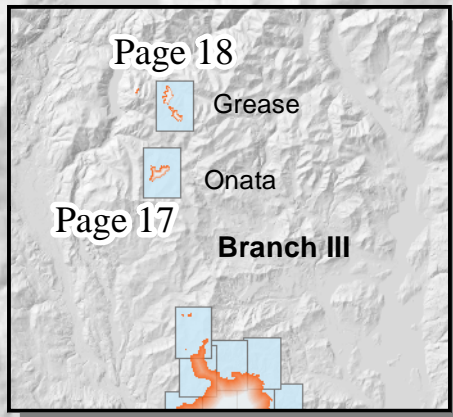
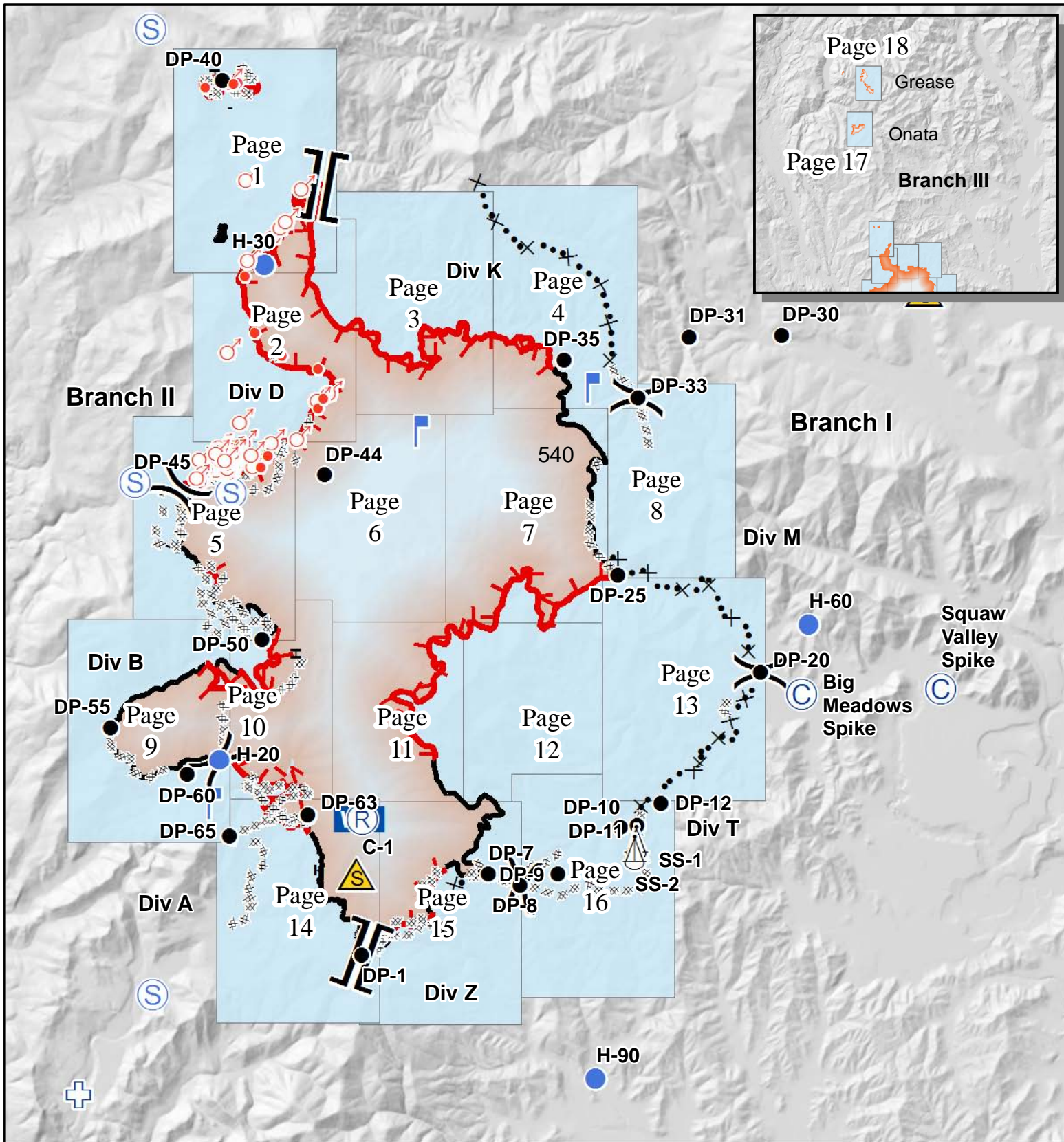


# Kaniksu Complex WA-COF-001302 IAP Maps September 8, 2015

Fire	Acres
Baldy	515
Grease Creek	598
Hall Mtn	39
Onata	546
Slate Creek	1
S. Fork Slate Creek	167
Tower	24,296
<b>TOTAL</b>	<b>26,162</b>

as of 9/6 2100 hrs

	Hot Spot		Safety Zone		Uncontrolled Fire Edge
	Sling Site		Spot Fire		Completed Dozer Line
	Camp		Staging Area		Hand Line
	Drop Point		Roads		Proposed Dozer Line
	Lookout		First Aid Station		Open
					Closed
					Structures
					Warming Hut



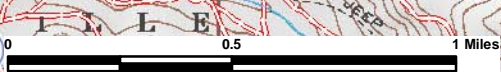


117°12'W

117°11'W

117°10'W

117°9'W



48°36'N

48°36'N

48°35'N

48°35'N

48°34'N

48°34'N

48°33'N

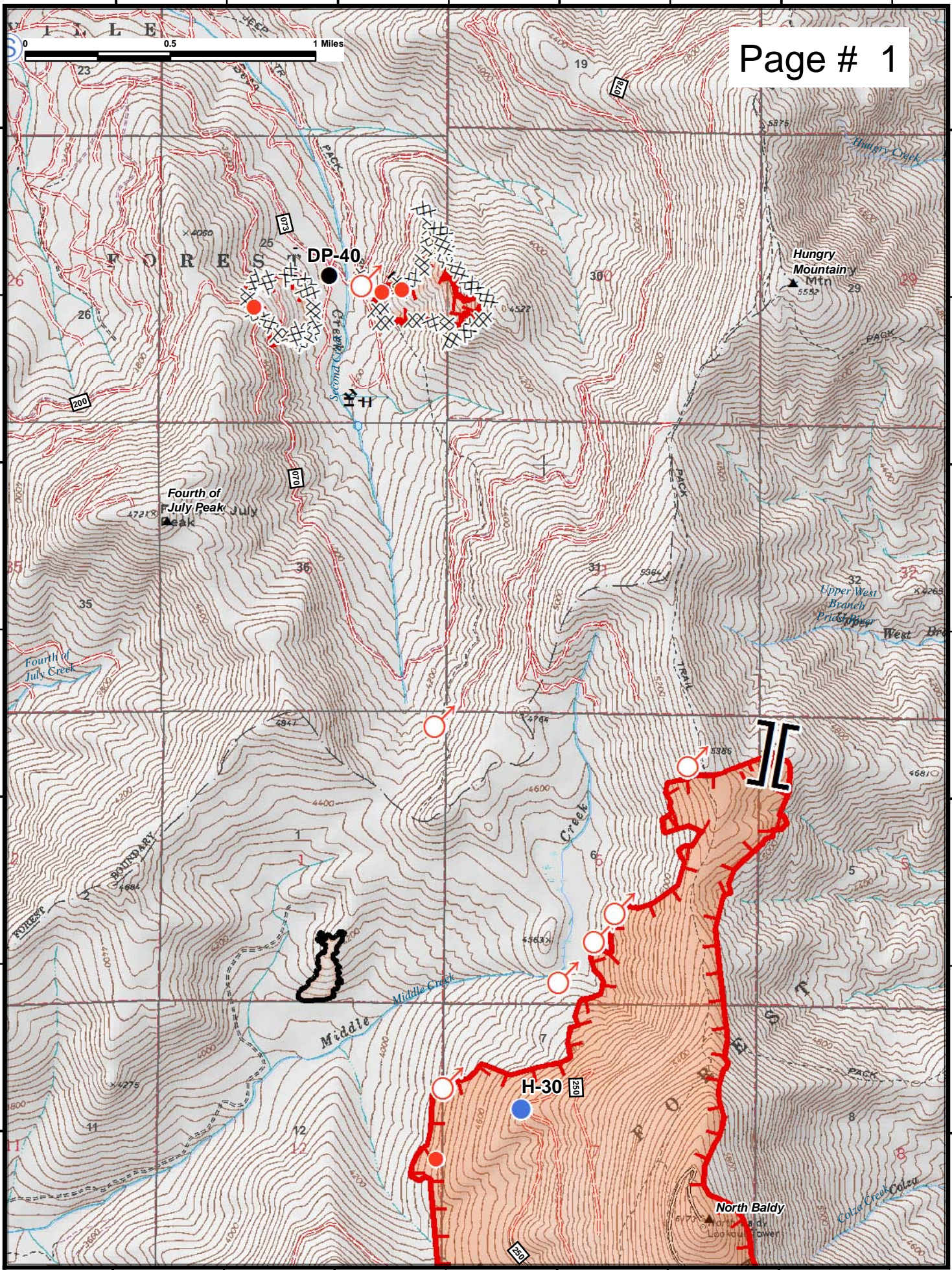
48°33'N

117°12'W

117°11'W

117°10'W

117°9'W



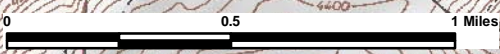


117°12'W 117°11'W 117°10'W 117°9'W 117°8'W

48°34'N

48°34'N

Page # 2



48°33'N

48°33'N

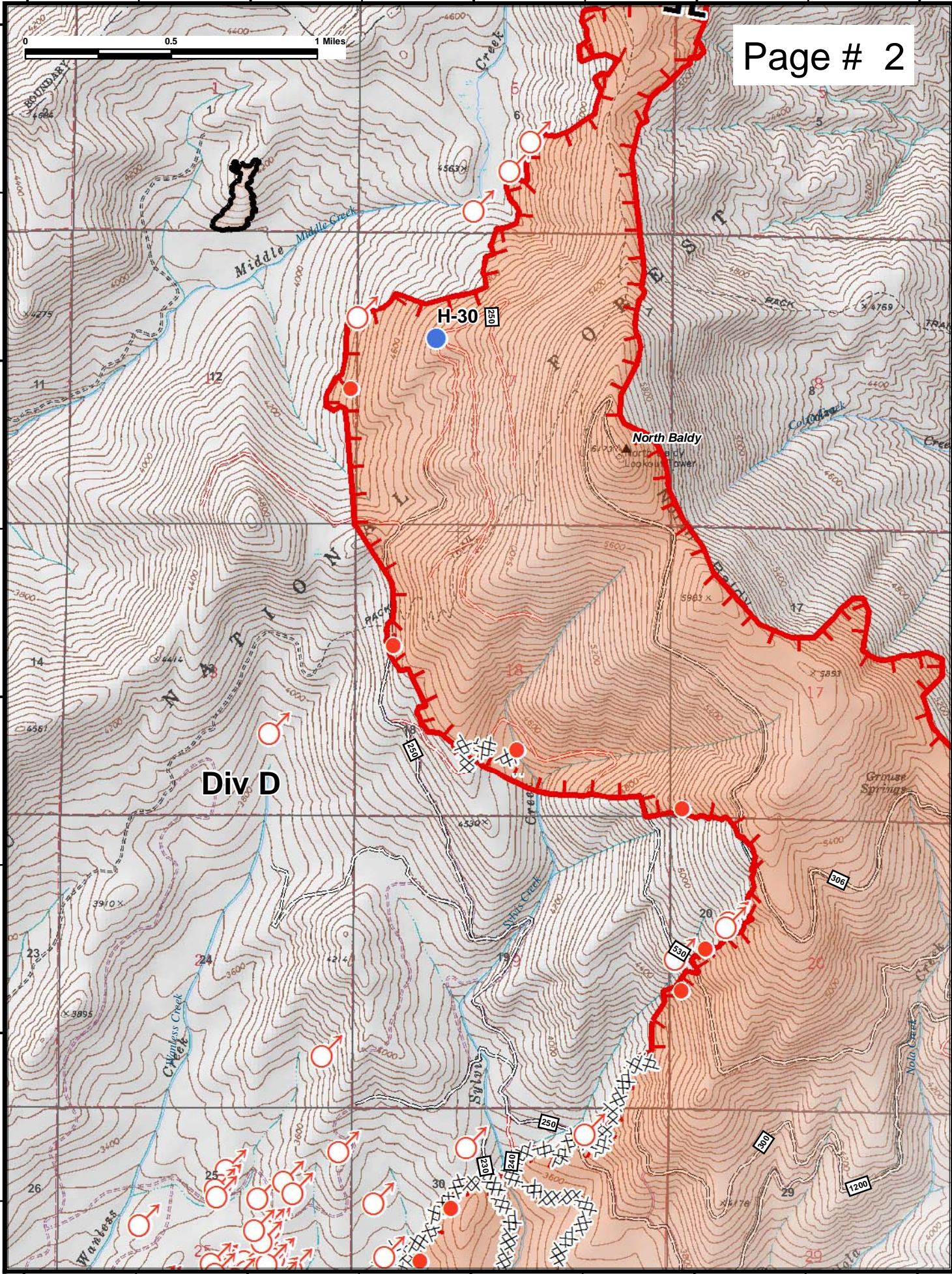
48°32'N

48°32'N

48°31'N

48°31'N

117°12'W 117°11'W 117°10'W 117°9'W 117°8'W



Div D

H-30

North Baldy





117°9'W

117°8'W

117°7'W

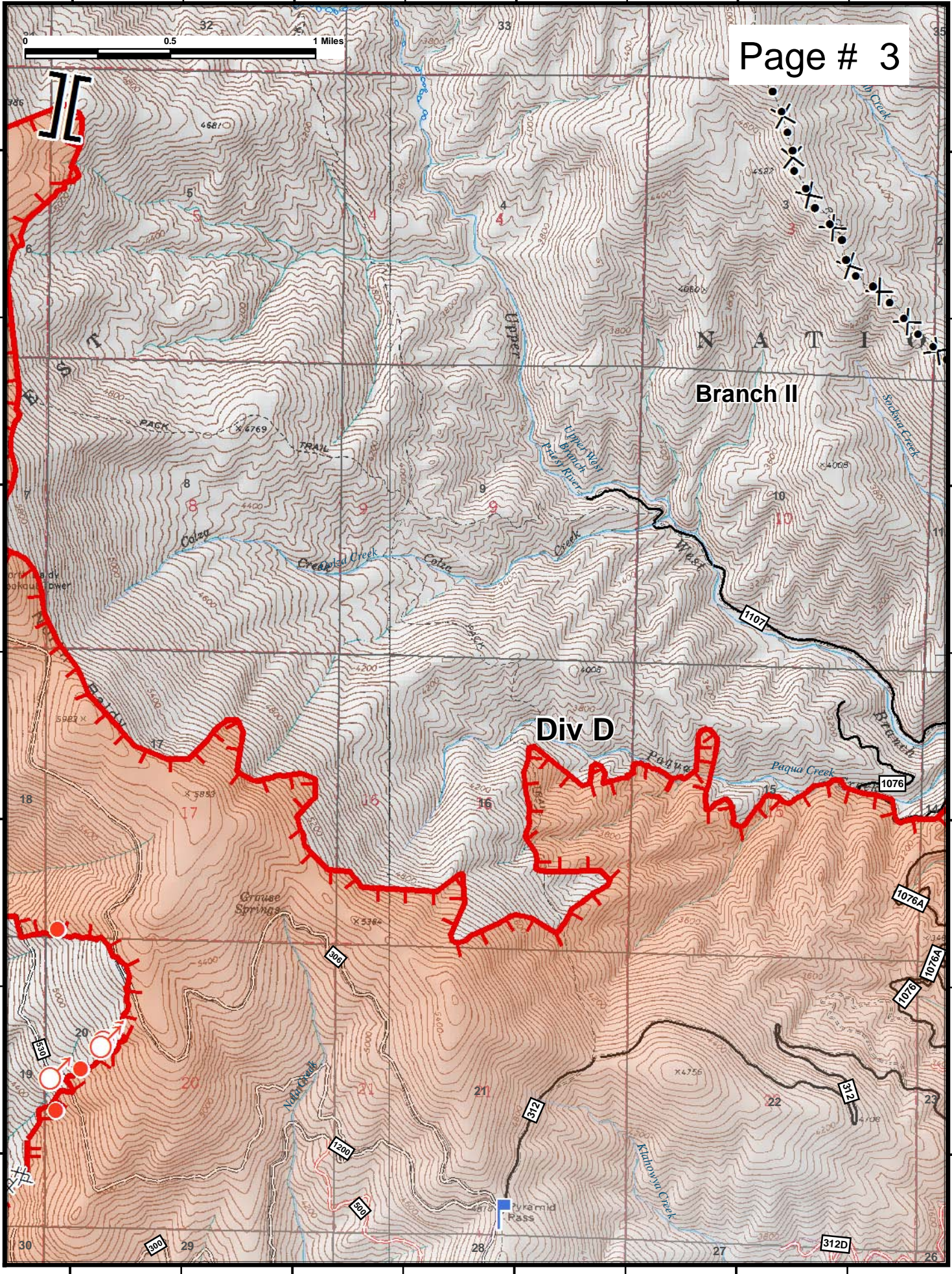
117°6'W



Page # 3

48°34'N  
48°33'N  
48°32'N  
48°31'N

48°34'N  
48°33'N  
48°32'N  
48°31'N



Branch II

Div D

N A T I

Grass Springs

Pyramid Pass

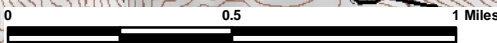


117°6'W

117°5'W

117°4'W

117°3'W



Page # 4

48°34'N

48°34'N

48°33'N

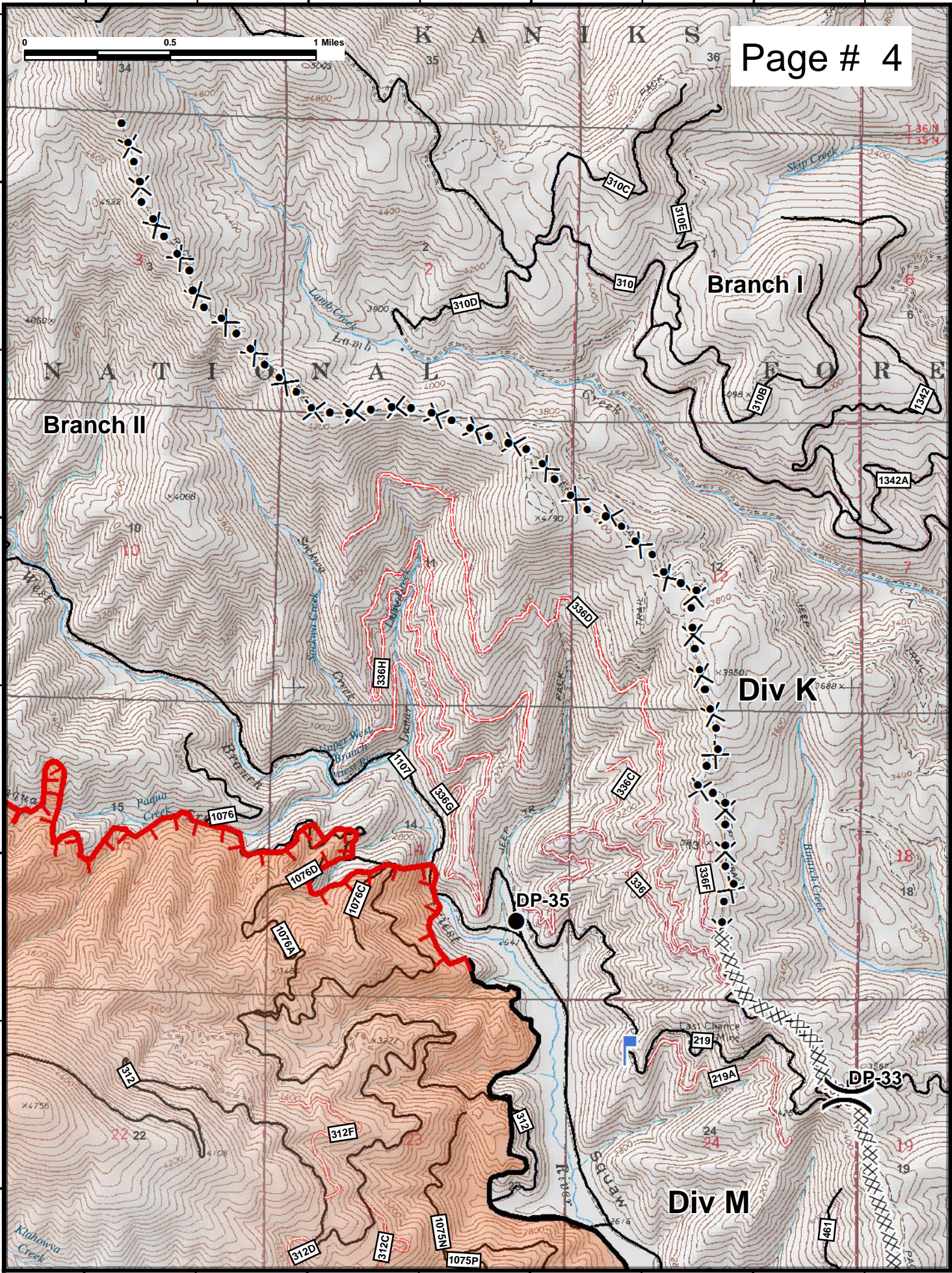
48°33'N

48°32'N

48°32'N

48°31'N

48°31'N



117°6'W

117°5'W

117°4'W

117°3'W



117°13'W

117°12'W

117°11'W

117°10'W

Page # 5

48°31'N

48°31'N

48°30'N

48°30'N

48°29'N

48°29'N

48°28'N

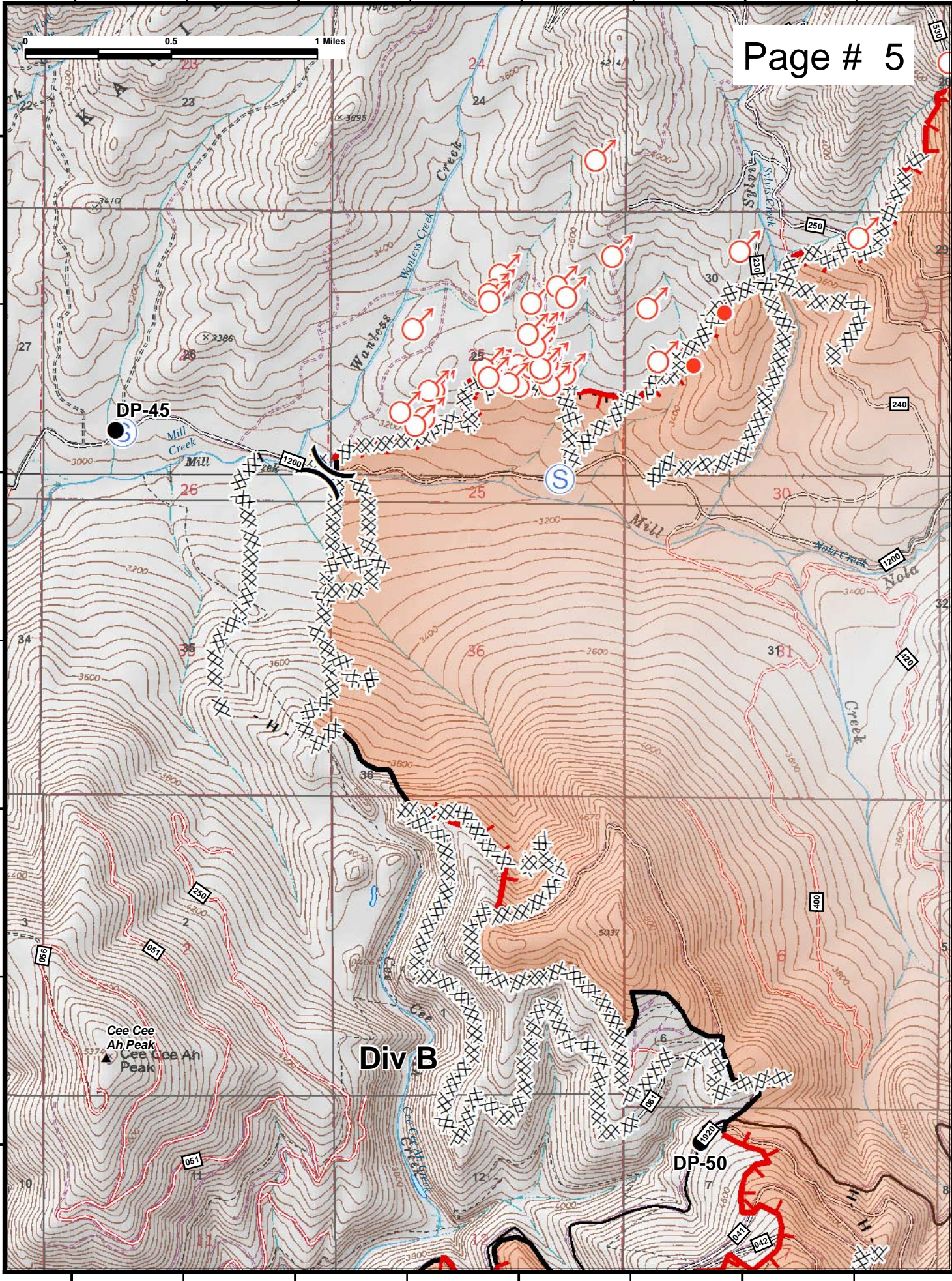
48°28'N

117°13'W

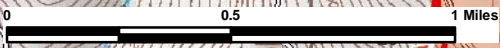
117°12'W

117°11'W

117°10'W

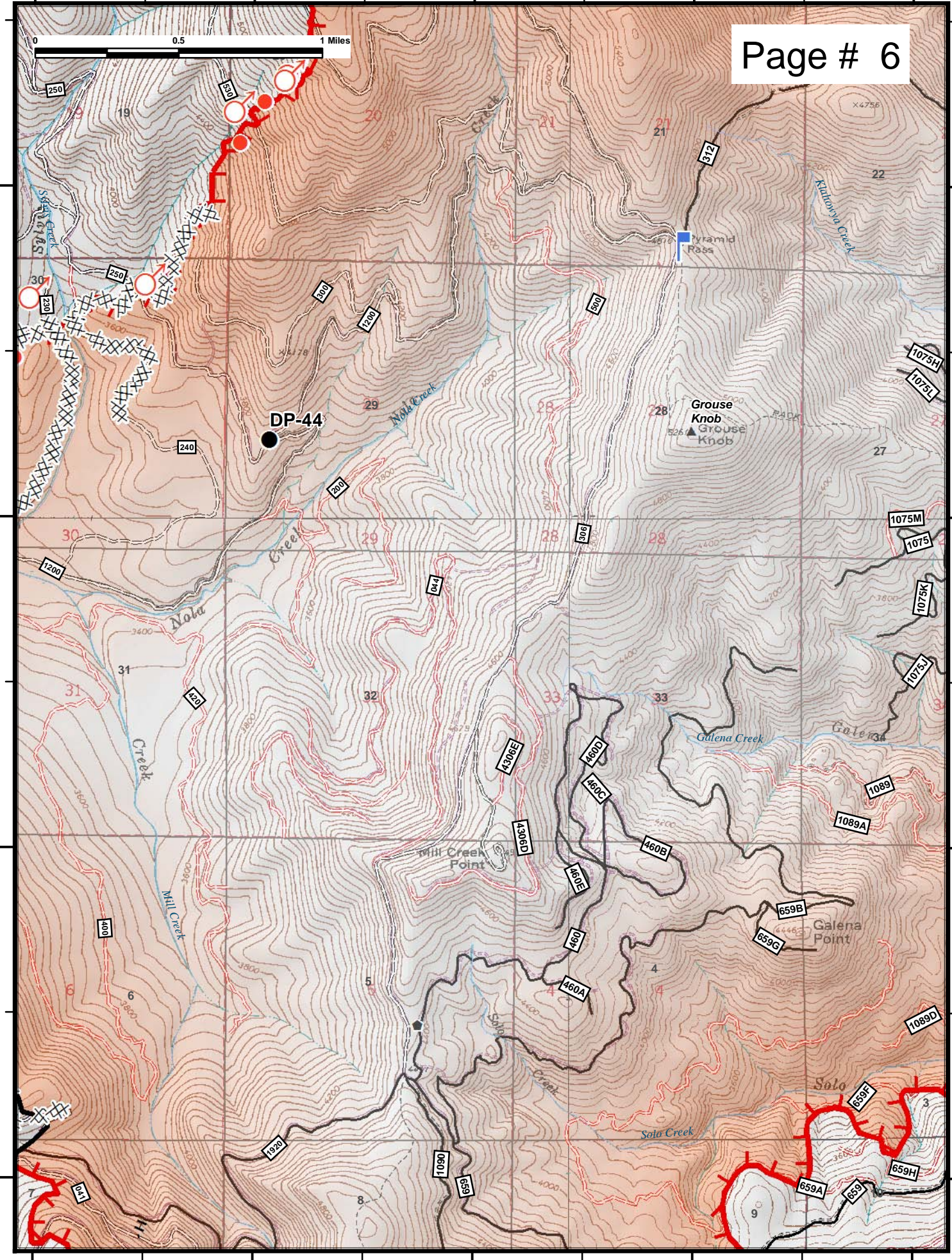






48°31'N  
48°30'N  
48°29'N  
48°28'N

48°31'N  
48°30'N  
48°29'N  
48°28'N



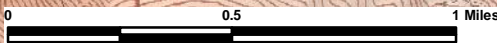


117°6'W

117°5'W

117°4'W

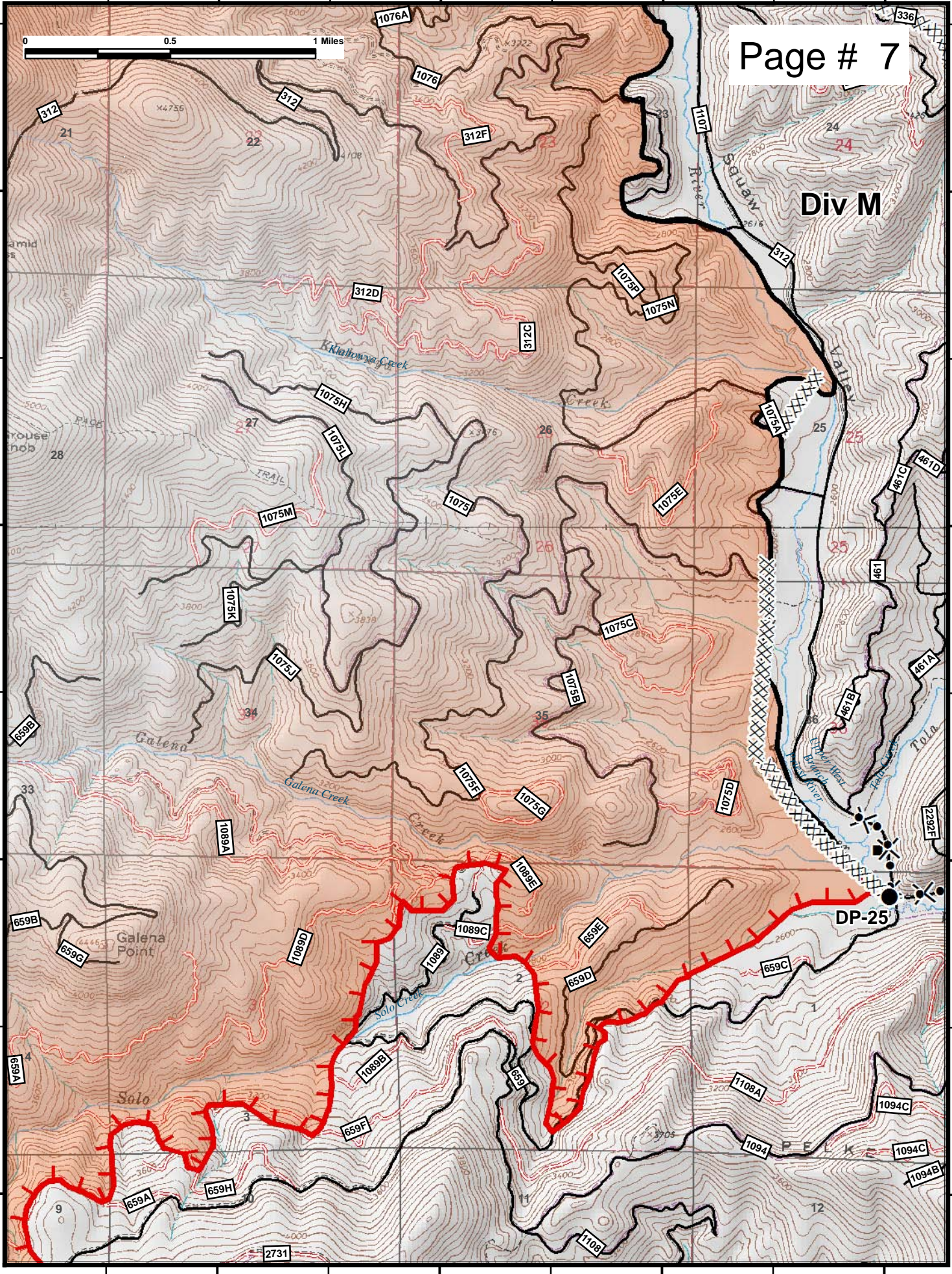
117°3'W



Page # 7

48°31'N  
48°30'N  
48°29'N  
48°28'N

48°31'N  
48°30'N  
48°29'N  
48°28'N



Div M

DP-25

117°6'W

117°5'W

117°4'W

117°3'W



117°4'W

117°3'W

117°2'W

117°1'W

Page # 8

48°31'N

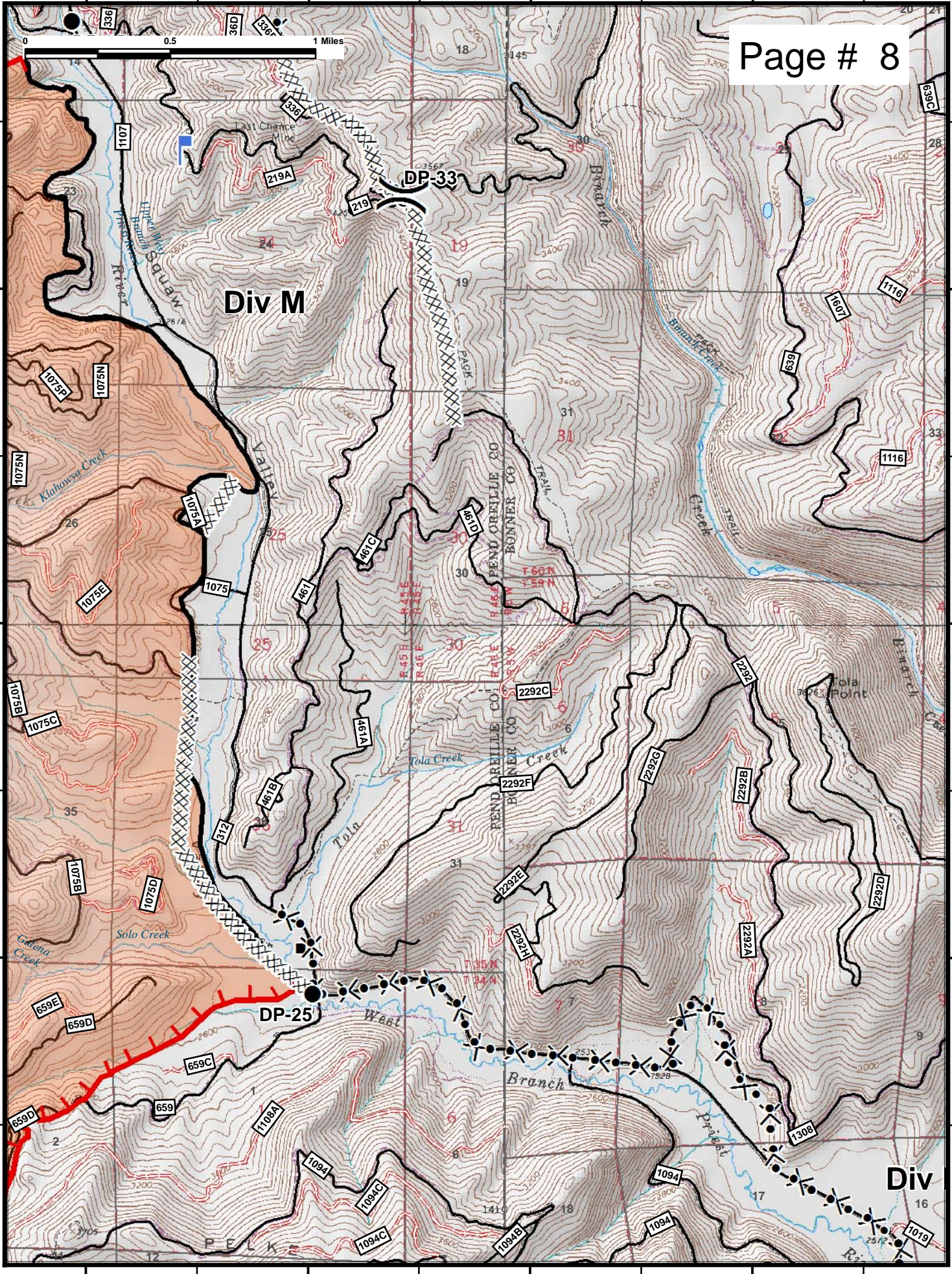
48°31'N

48°30'N

48°30'N

48°29'N

48°29'N



117°4'W

117°3'W

117°2'W

117°1'W



117°14'W

117°13'W

117°12'W

117°11'W

48°28'N

48°28'N

48°27'N

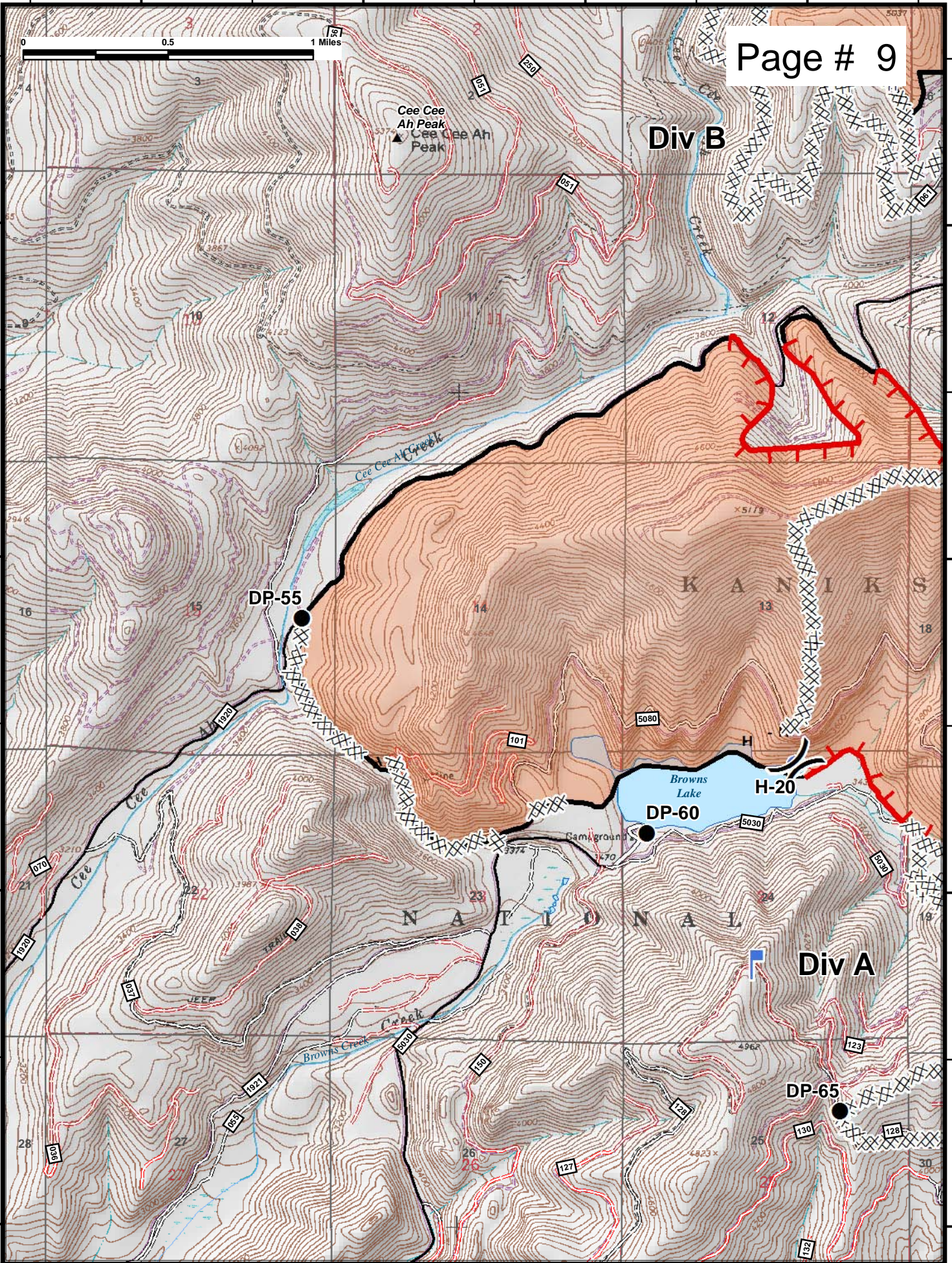
48°27'N

48°26'N

48°26'N

48°25'N

48°25'N



117°14'W

117°13'W

117°12'W

117°11'W

Div B

Div A

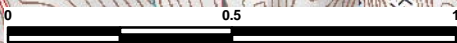


117°12'W

117°11'W

117°10'W

117°9'W



48°28'N

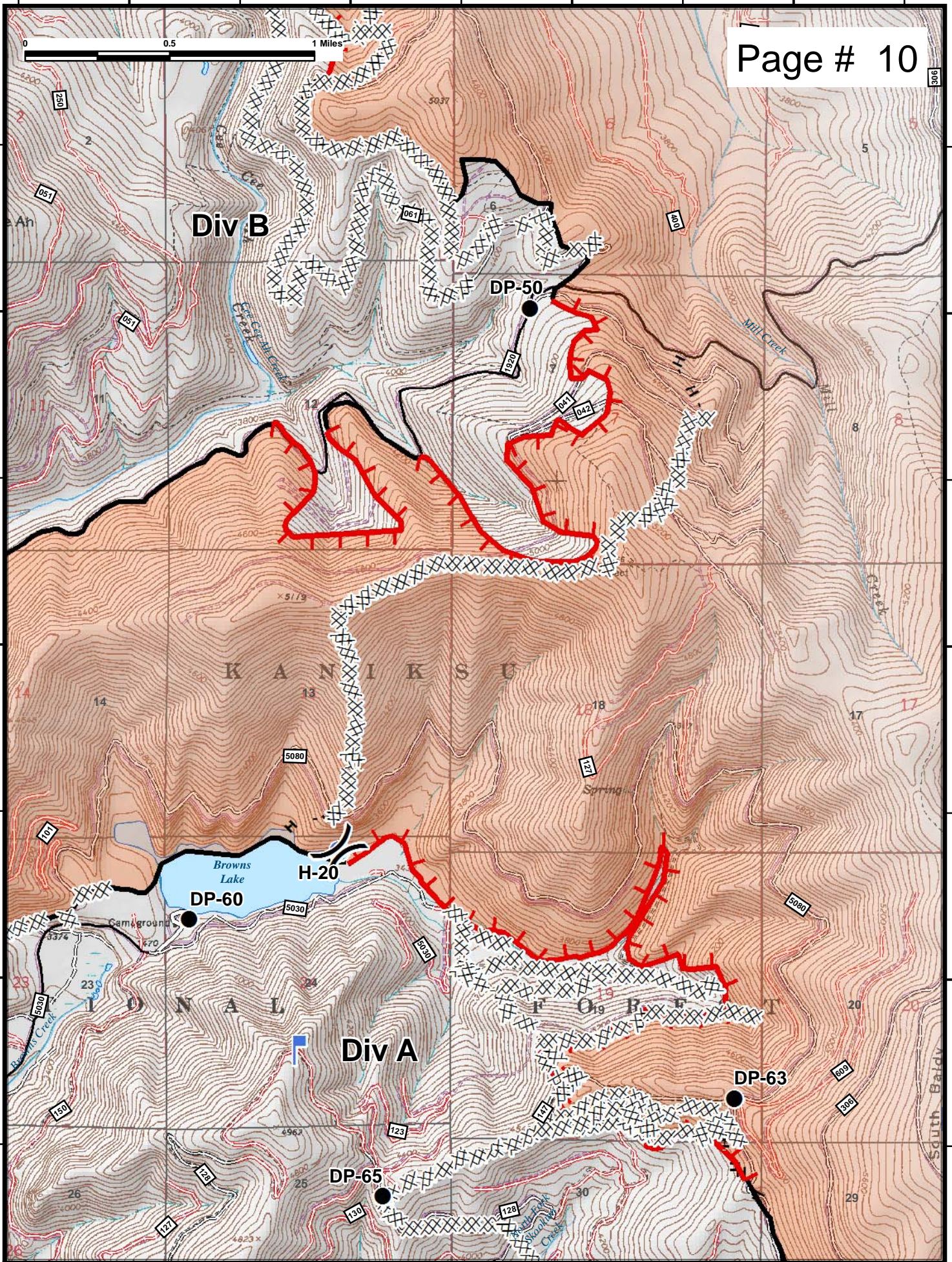
48°28'N

48°27'N

48°27'N

48°26'N

48°26'N



117°12'W

117°11'W

117°10'W

117°9'W

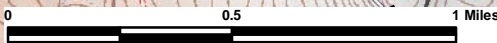


117°9'W

117°8'W

117°7'W

117°6'W



Page # 11

48°28'N

48°28'N

48°27'N

48°27'N

48°26'N

48°26'N

48°25'N

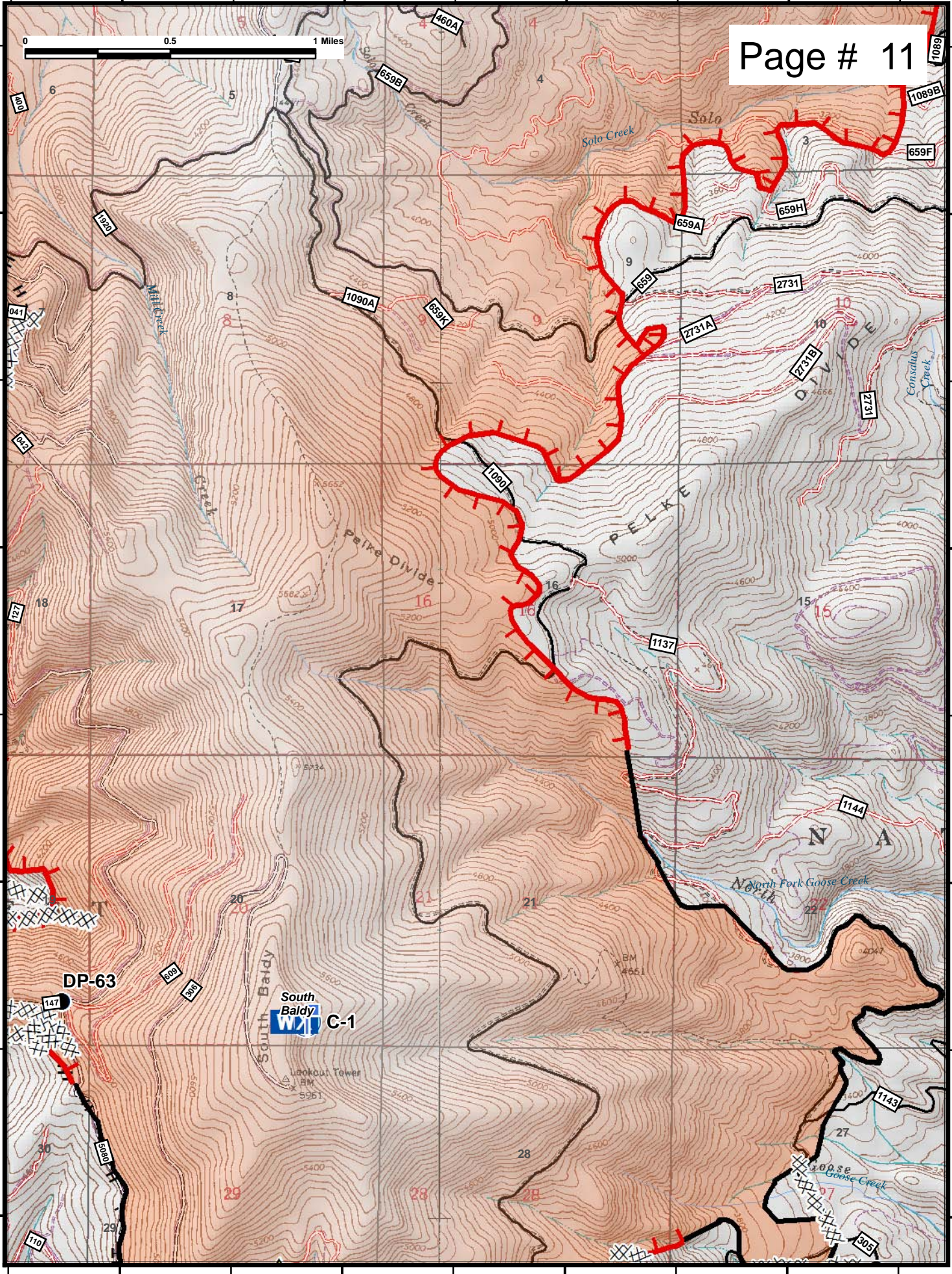
48°25'N

117°9'W

117°8'W

117°7'W

117°6'W



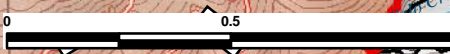


117°6'W

117°5'W

117°4'W

117°3'W



48°28'N

48°28'N

48°27'N

48°27'N

48°26'N

48°26'N

48°25'N

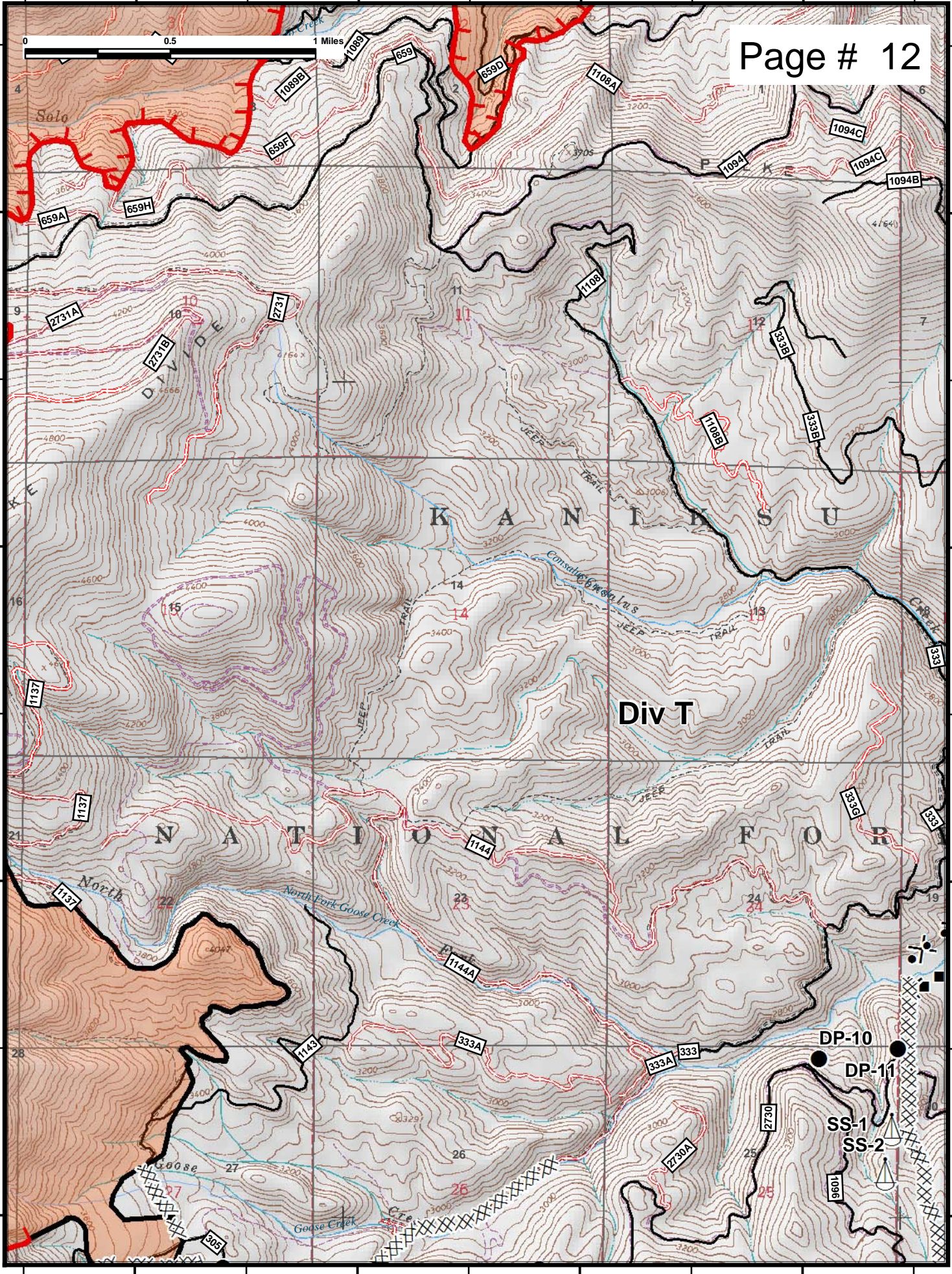
48°25'N

117°6'W

117°5'W

117°4'W

117°3'W





117°3'W

117°2'W

117°1'W

117°0'W

48°29'N

48°29'N

Page # 13

48°28'N

48°28'N

48°27'N

48°27'N

48°26'N

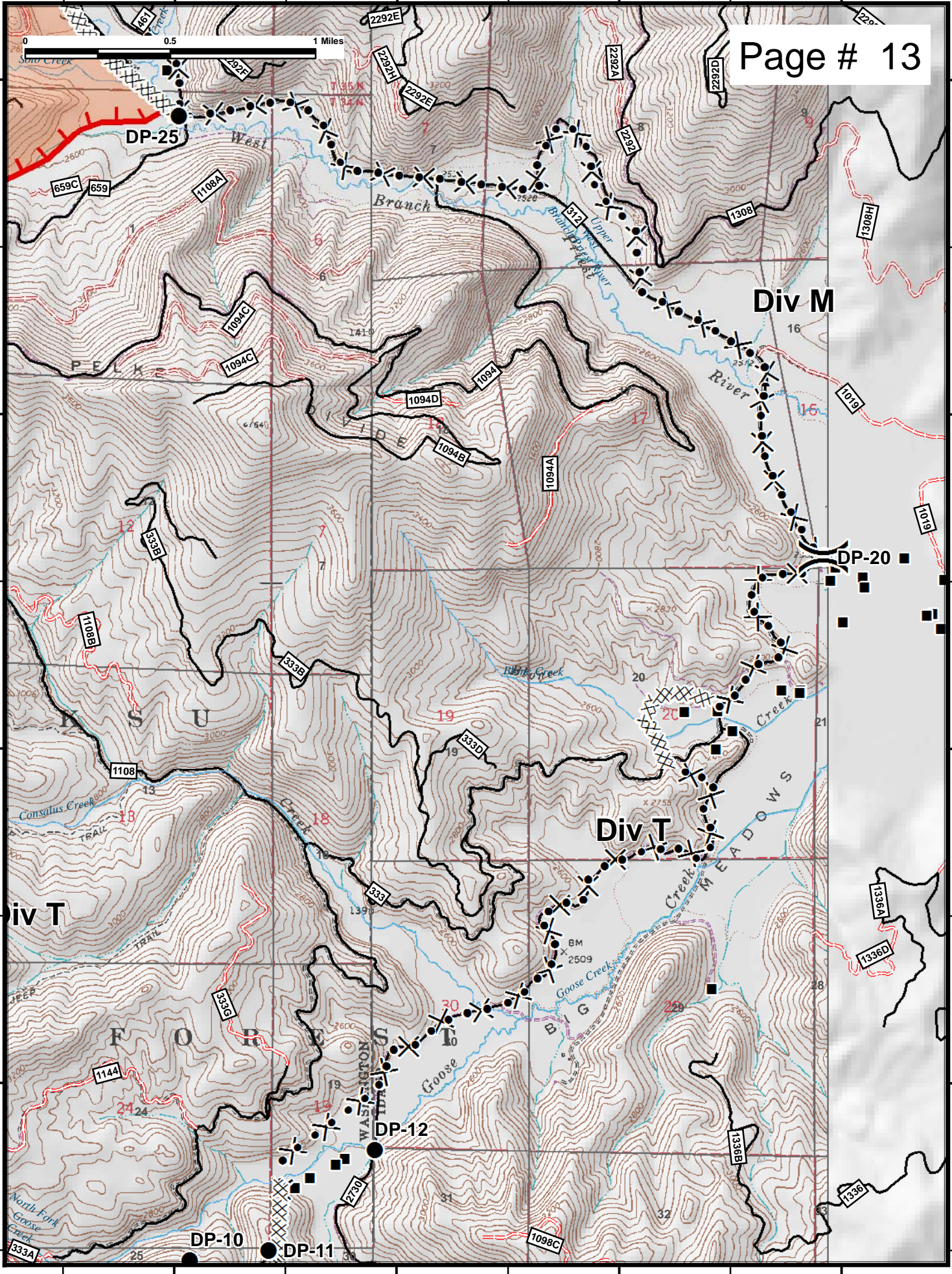
48°26'N

117°3'W

117°2'W

117°1'W

117°0'W





117°11'W

117°10'W

117°9'W

117°8'W

48°26'N

48°26'N

48°25'N

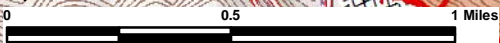
48°25'N

48°24'N

48°24'N

48°23'N

48°23'N



Div A

DP-63

DP-65

South Baldy C-1

North Skookum Lake

South Skookum Lake

Div Z

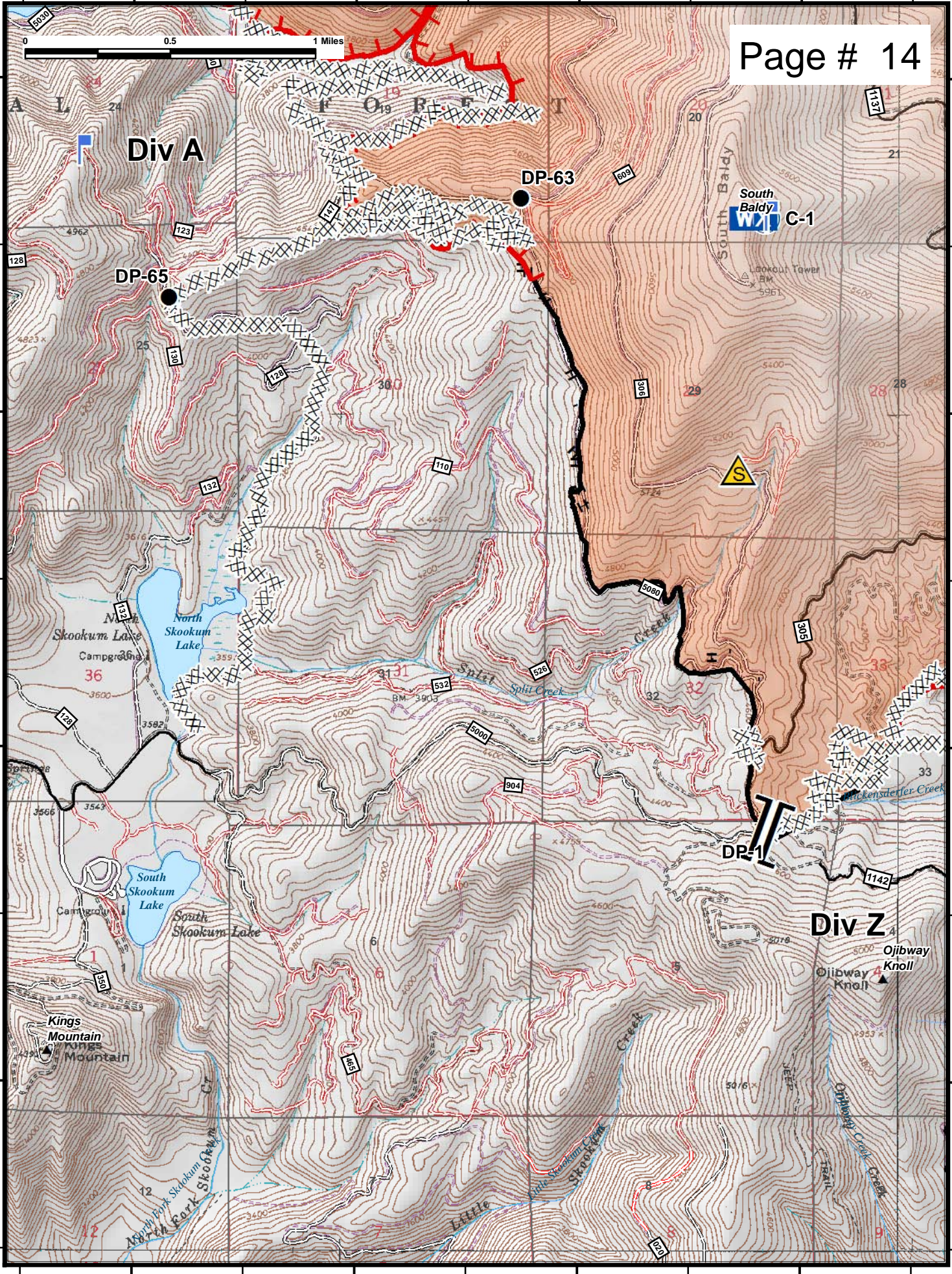
Ojibway Knoll

Kings Mountain

North Park Skookum

Little Skookum Creek

Ojibway Creek



117°11'W

117°10'W

117°9'W

117°8'W



117°8'W

117°7'W

117°6'W

117°5'W

48°26'N

48°26'N

Page # 15

48°25'N

48°25'N

48°24'N

48°24'N

48°23'N

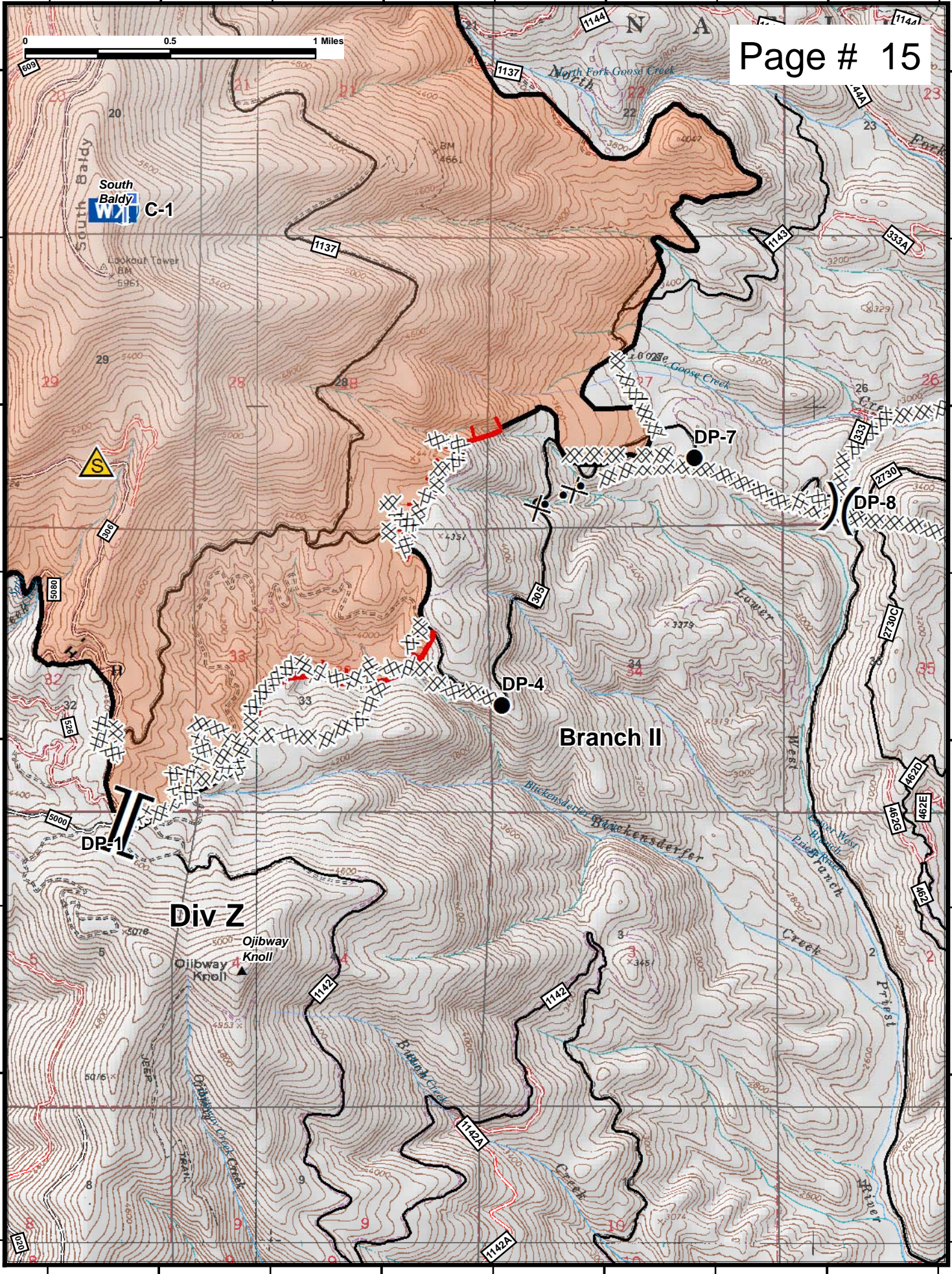
48°23'N

117°8'W

117°7'W

117°6'W

117°5'W



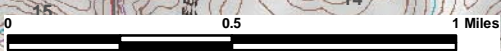


117°5'W

117°4'W

117°3'W

117°2'W



Page # 16

Div T

48°26'N

48°26'N

48°25'N

48°25'N

48°24'N

48°24'N

48°23'N

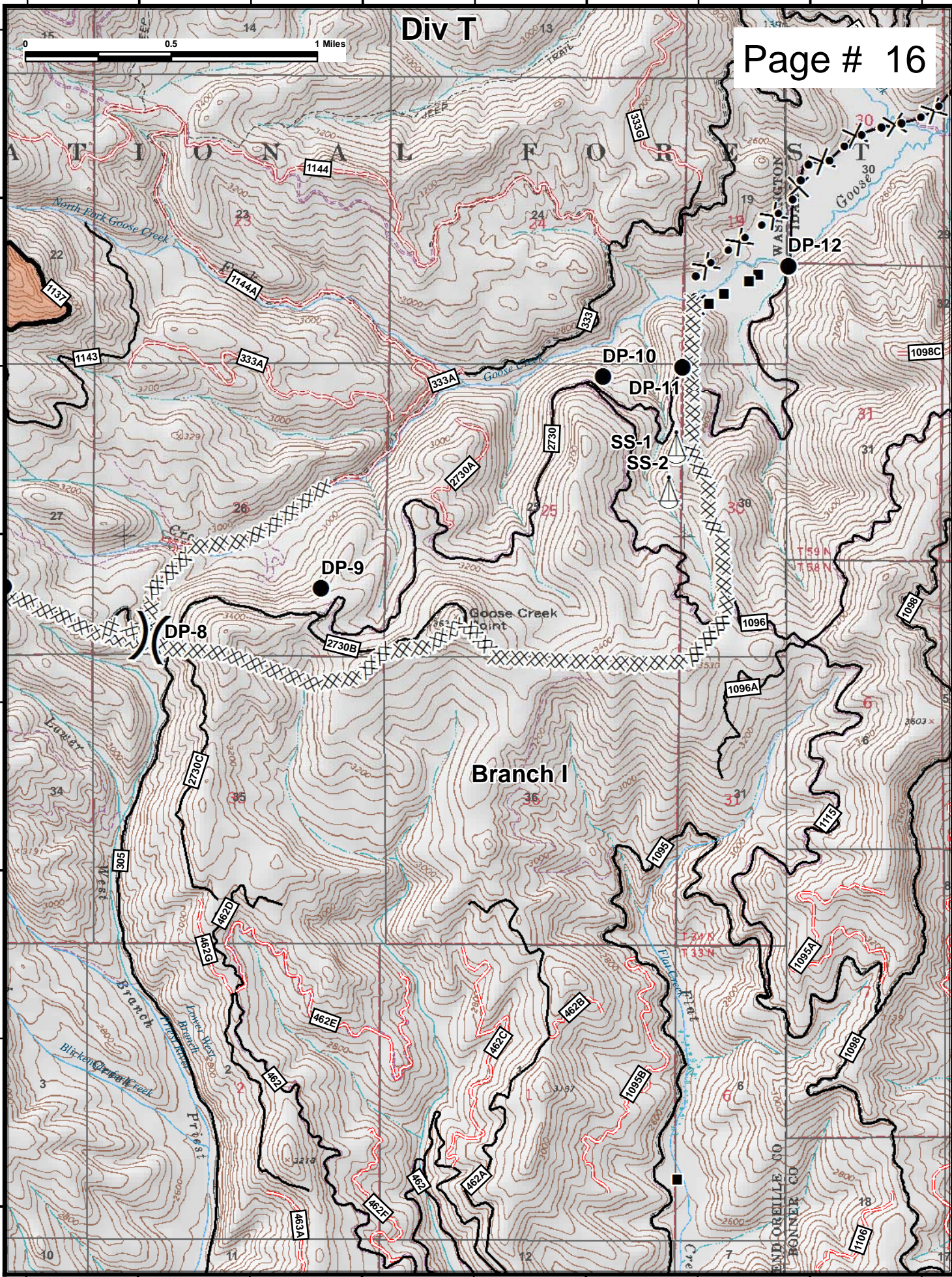
48°23'N

117°5'W

117°4'W

117°3'W

117°2'W



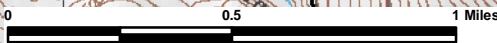


117°15'W

117°14'W

117°13'W

117°12'W



Page # 17

48°45'N

48°45'N

48°44'N

48°44'N

48°43'N

48°43'N

Div Onata

DP-101

DP-130

DP-120

DP-110

DP-150

Onata/Grease Staging

Branch III

Molybdenite

Mountain

117°15'W

117°14'W

117°13'W

117°12'W



117°14'W

117°13'W

117°12'W

117°11'W

117°10'W

48°49'N

48°49'N

48°48'N

48°48'N

48°47'N

48°47'N

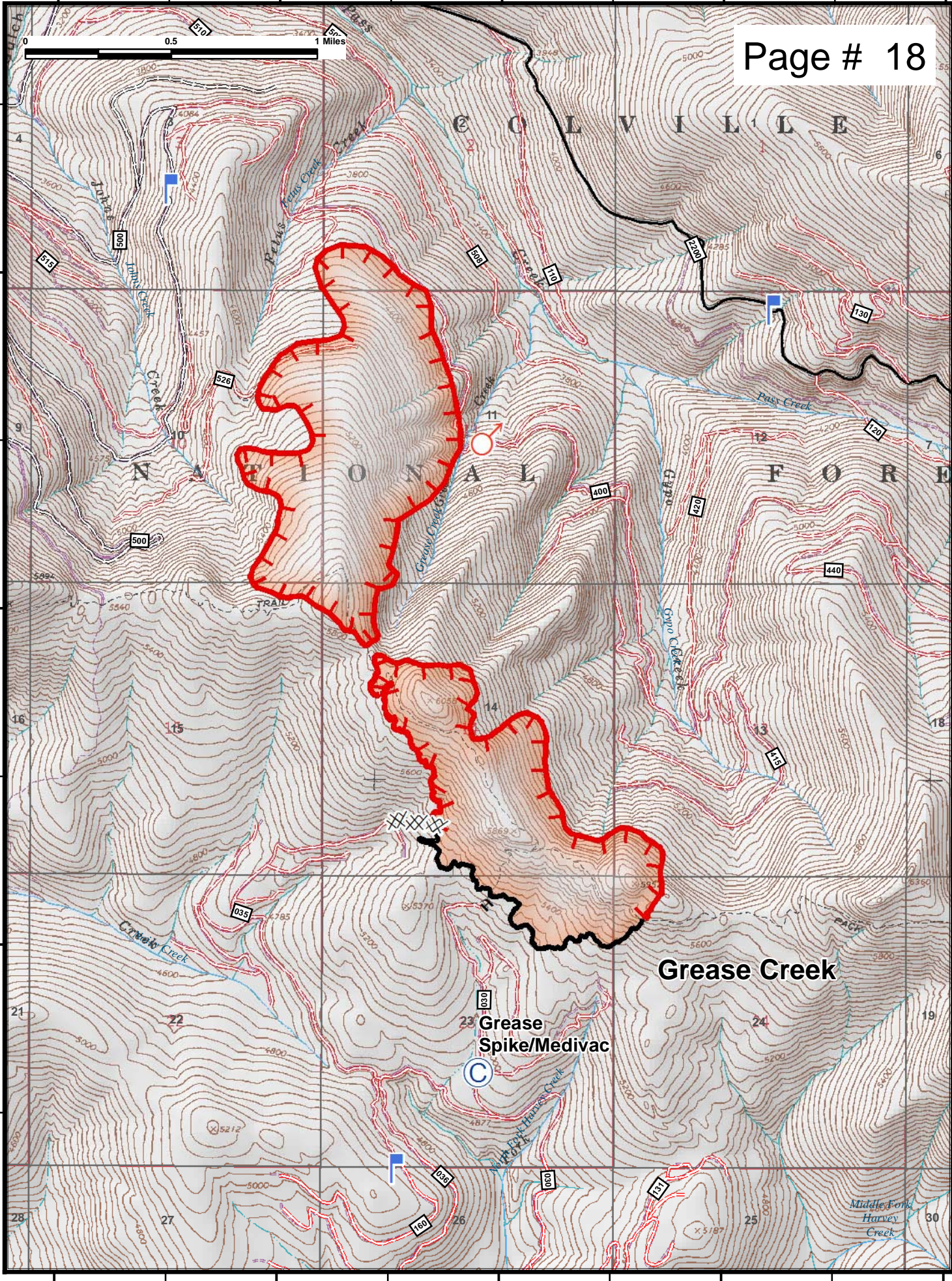
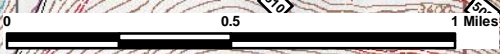
117°14'W

117°13'W

117°12'W

117°11'W

117°10'W



Grease Creek

Grease Spike/Medivac

Middle Fork Harvey Creek