

117°12'W

117°11'W

117°10'W

117°9'W



48°36'N

48°36'N

48°35'N

48°35'N

48°34'N

48°34'N

48°33'N

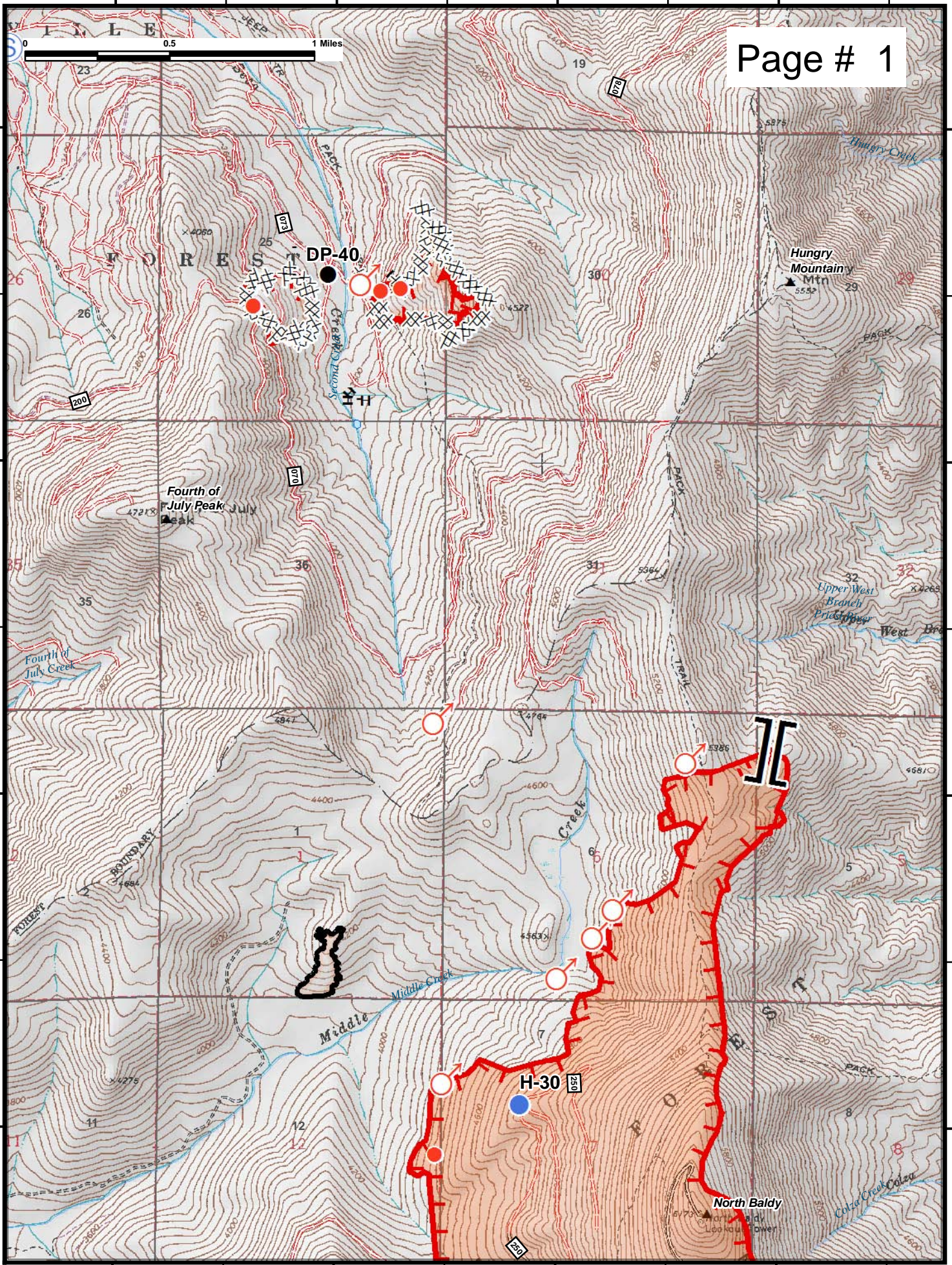
48°33'N

117°12'W

117°11'W

117°10'W

117°9'W

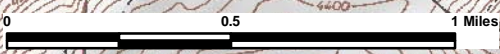


117°12'W 117°11'W 117°10'W 117°9'W 117°8'W

48°34'N

48°34'N

Page # 2



48°33'N

48°33'N

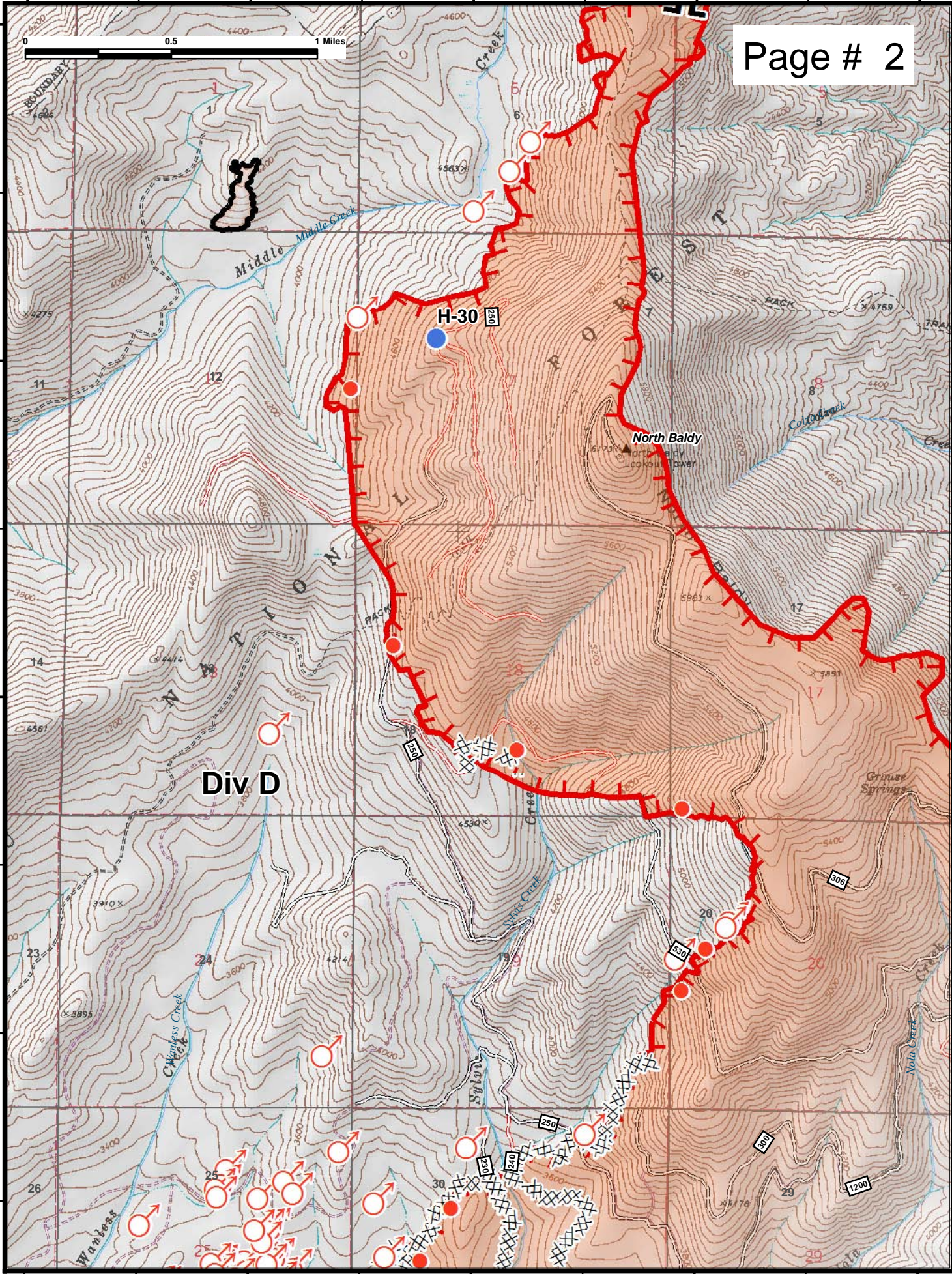
48°32'N

48°32'N

48°31'N

48°31'N

117°12'W 117°11'W 117°10'W 117°9'W 117°8'W



Div D

H-30

North Baldy



117°9'W

117°8'W

117°7'W

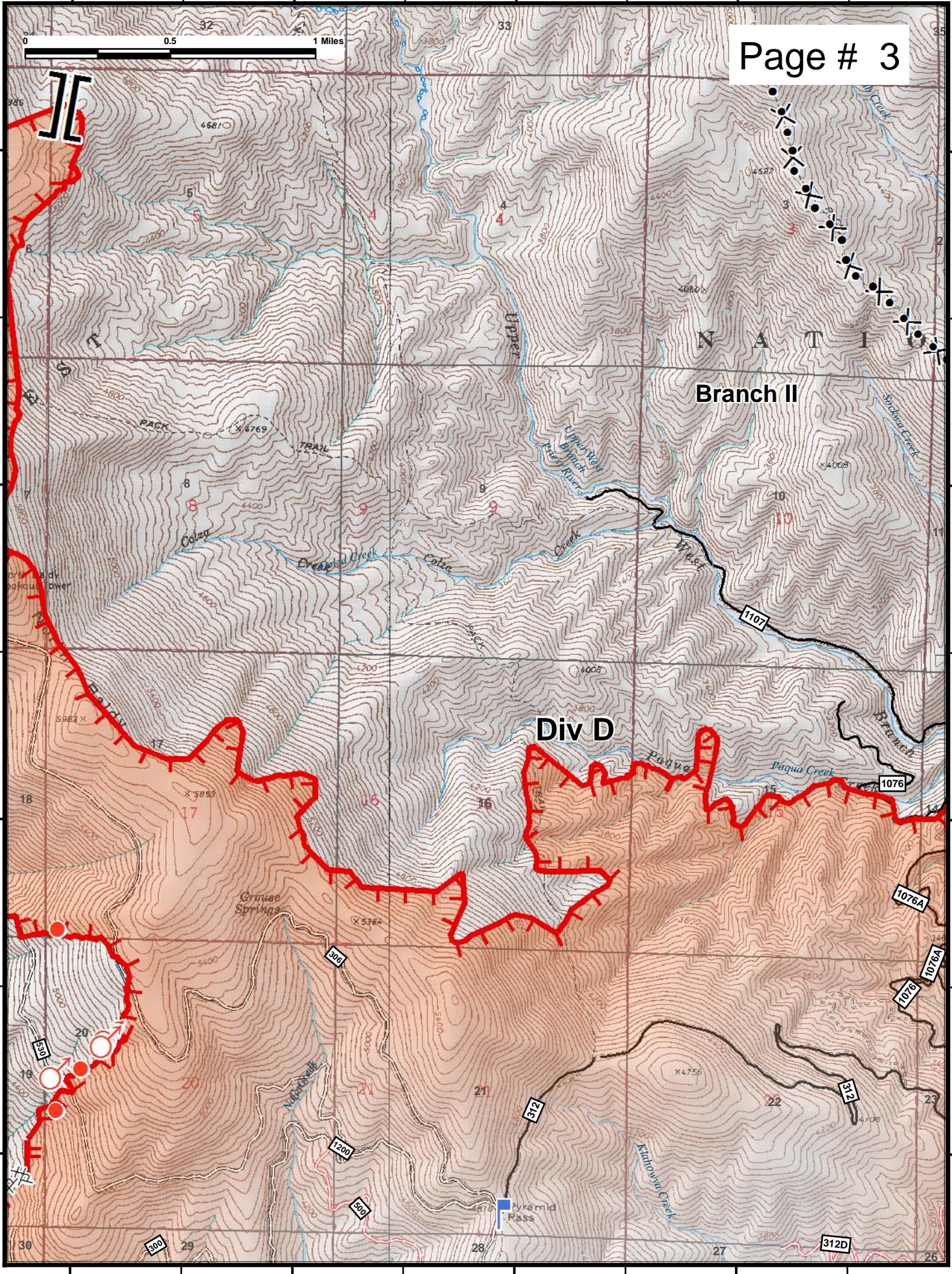
117°6'W



Page # 3

48°34'N  
48°33'N  
48°32'N  
48°31'N

48°34'N  
48°33'N  
48°32'N  
48°31'N



Branch II

Div D

N A T I

117°9'W

117°8'W

117°7'W

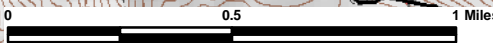
117°6'W

117°6'W

117°5'W

117°4'W

117°3'W



48°34'N

48°34'N

48°33'N

48°33'N

48°32'N

48°32'N

48°31'N

48°31'N

N A T I O N A L

K A N I K S

Branch I

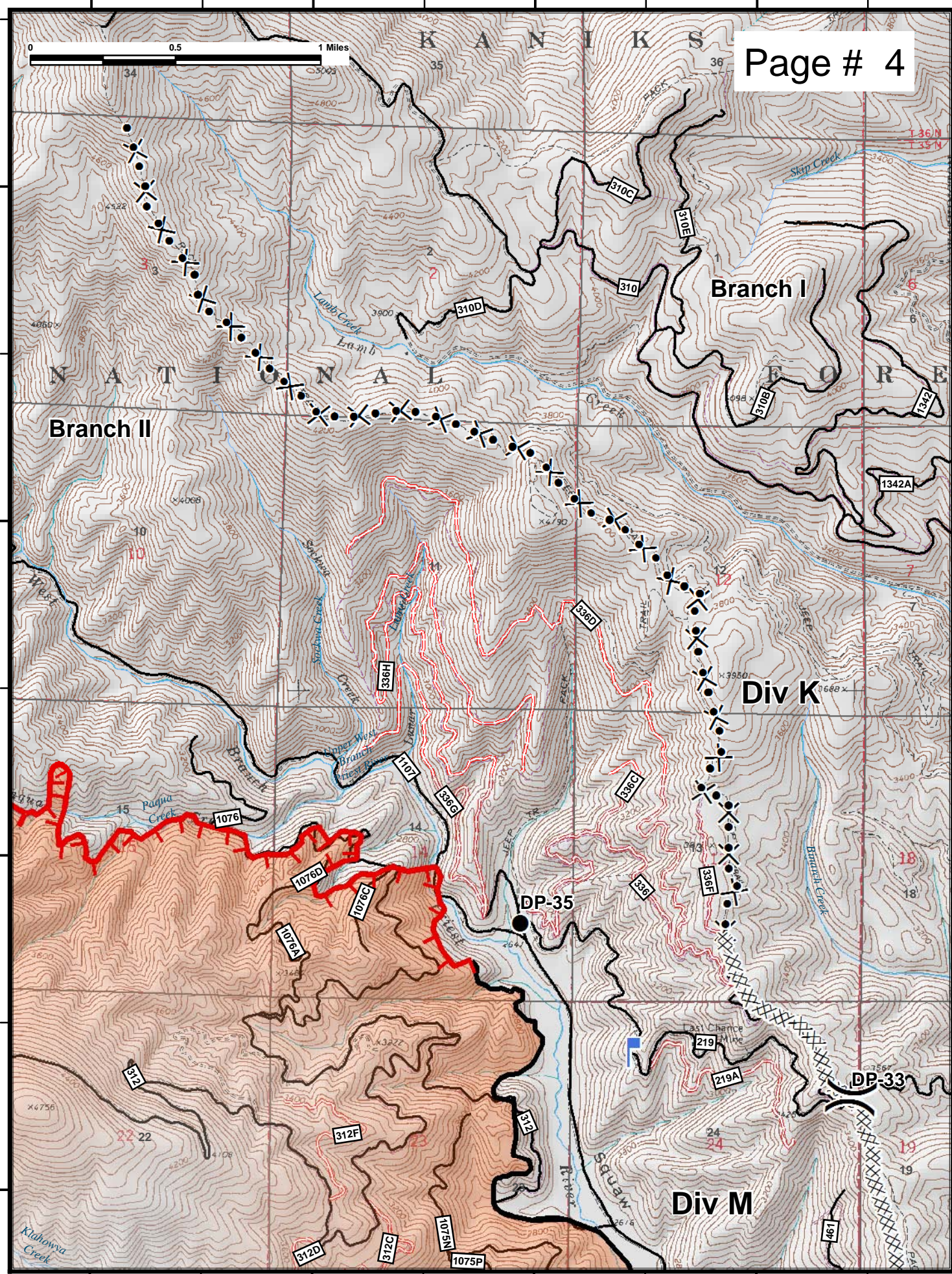
Branch II

Div K

Div M

DP-35

DP-33



117°6'W

117°5'W

117°4'W

117°3'W

117°13'W

117°12'W

117°11'W

117°10'W

Page # 5

48°31'N

48°31'N

48°30'N

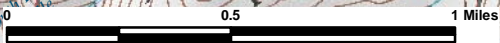
48°30'N

48°29'N

48°29'N

48°28'N

48°28'N

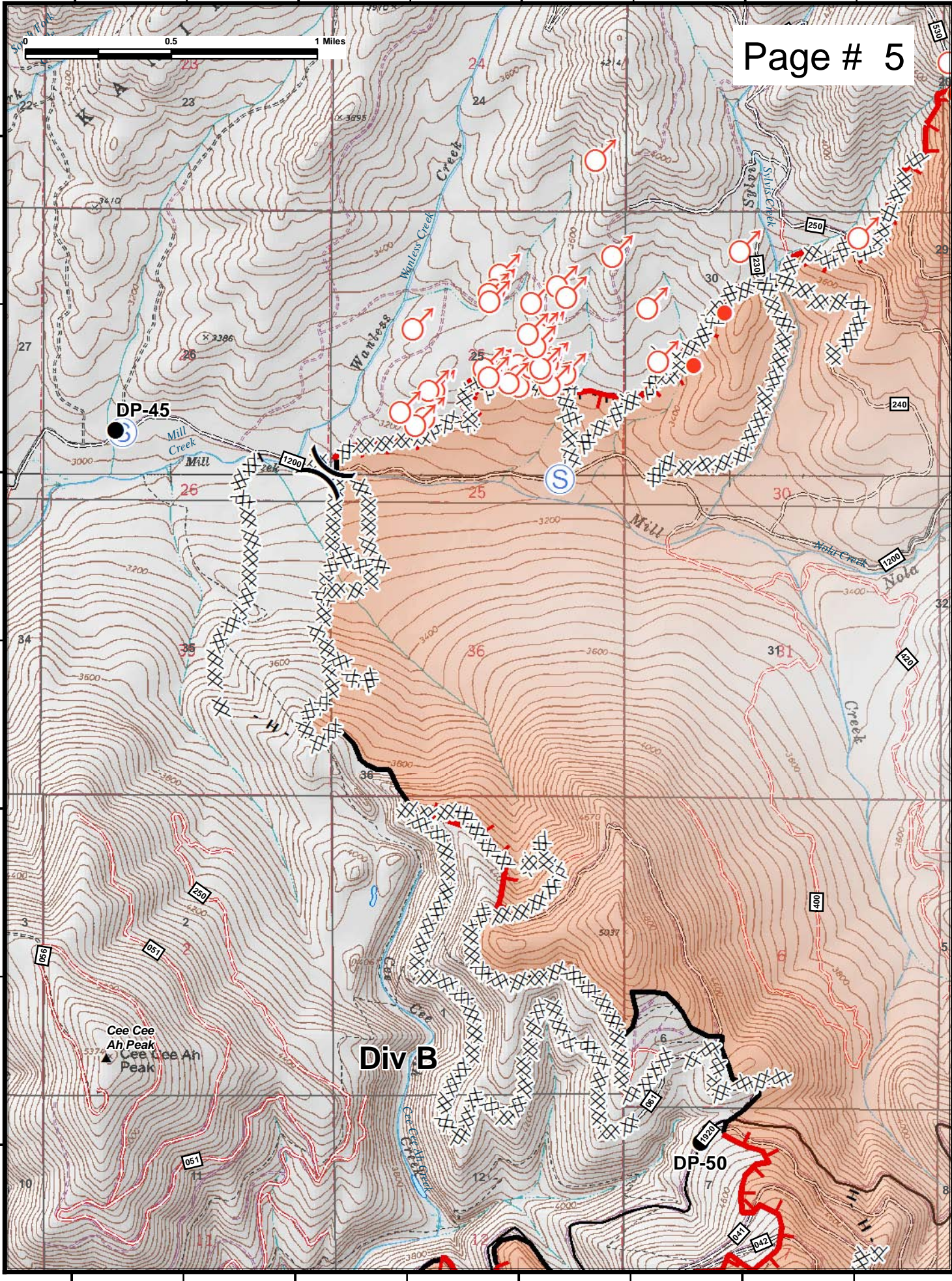


DP-45

Div B

DP-50

Cee Cee  
Ah Peak  
▲ Cee Lee Ah  
Peak



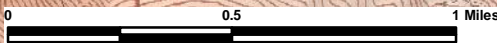


117°6'W

117°5'W

117°4'W

117°3'W



Page # 7

48°31'N

48°31'N

48°30'N

48°30'N

48°29'N

48°29'N

48°28'N

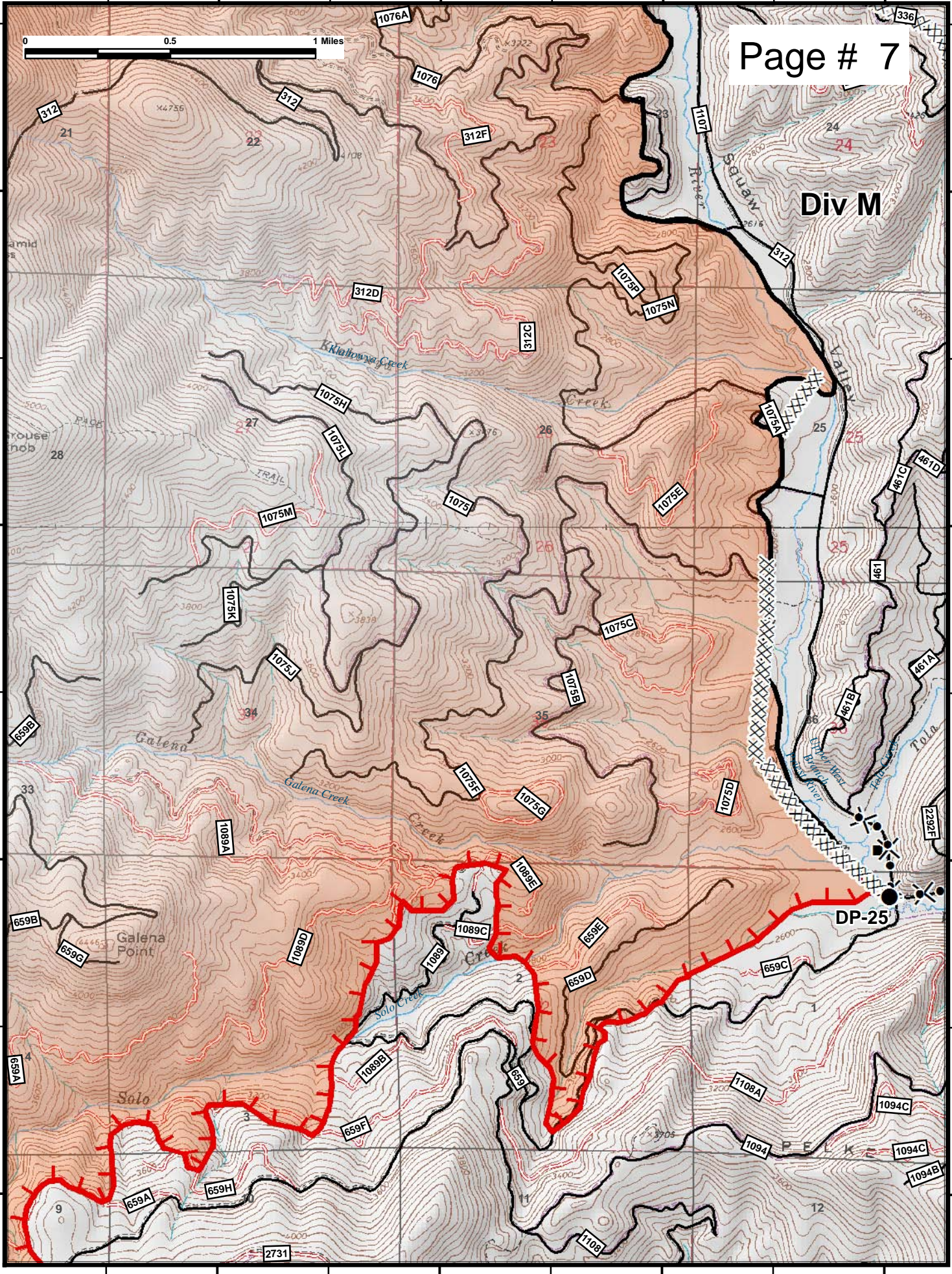
48°28'N

117°6'W

117°5'W

117°4'W

117°3'W



117°4'W

117°3'W

117°2'W

117°1'W

Page # 8

48°31'N

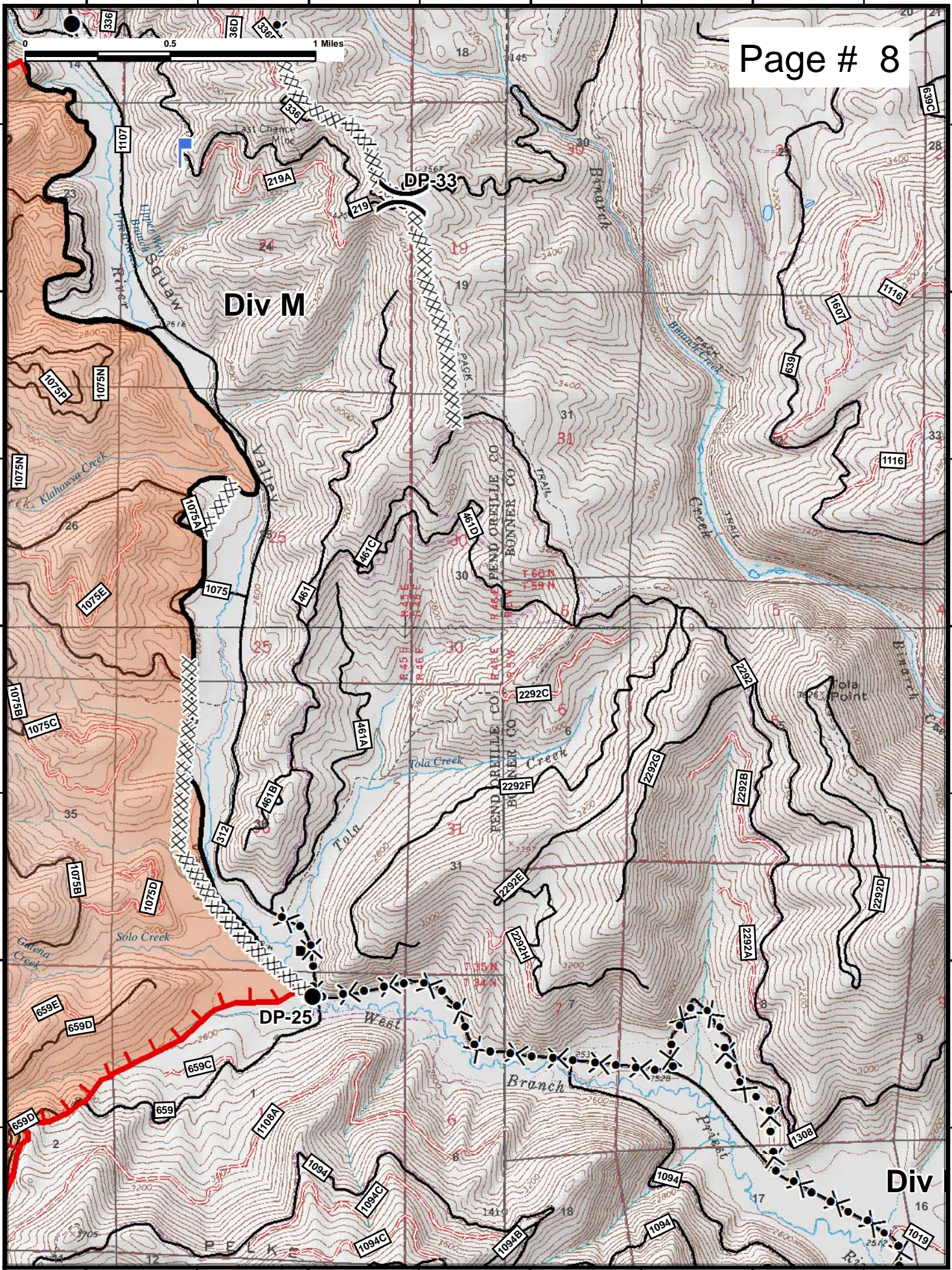
48°31'N

48°30'N

48°30'N

48°29'N

48°29'N



117°4'W

117°3'W

117°2'W

117°1'W

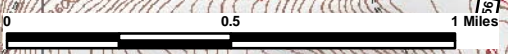


117°14'W

117°13'W

117°12'W

117°11'W



48°28'N

48°28'N

48°27'N

48°27'N

48°26'N

48°26'N

48°25'N

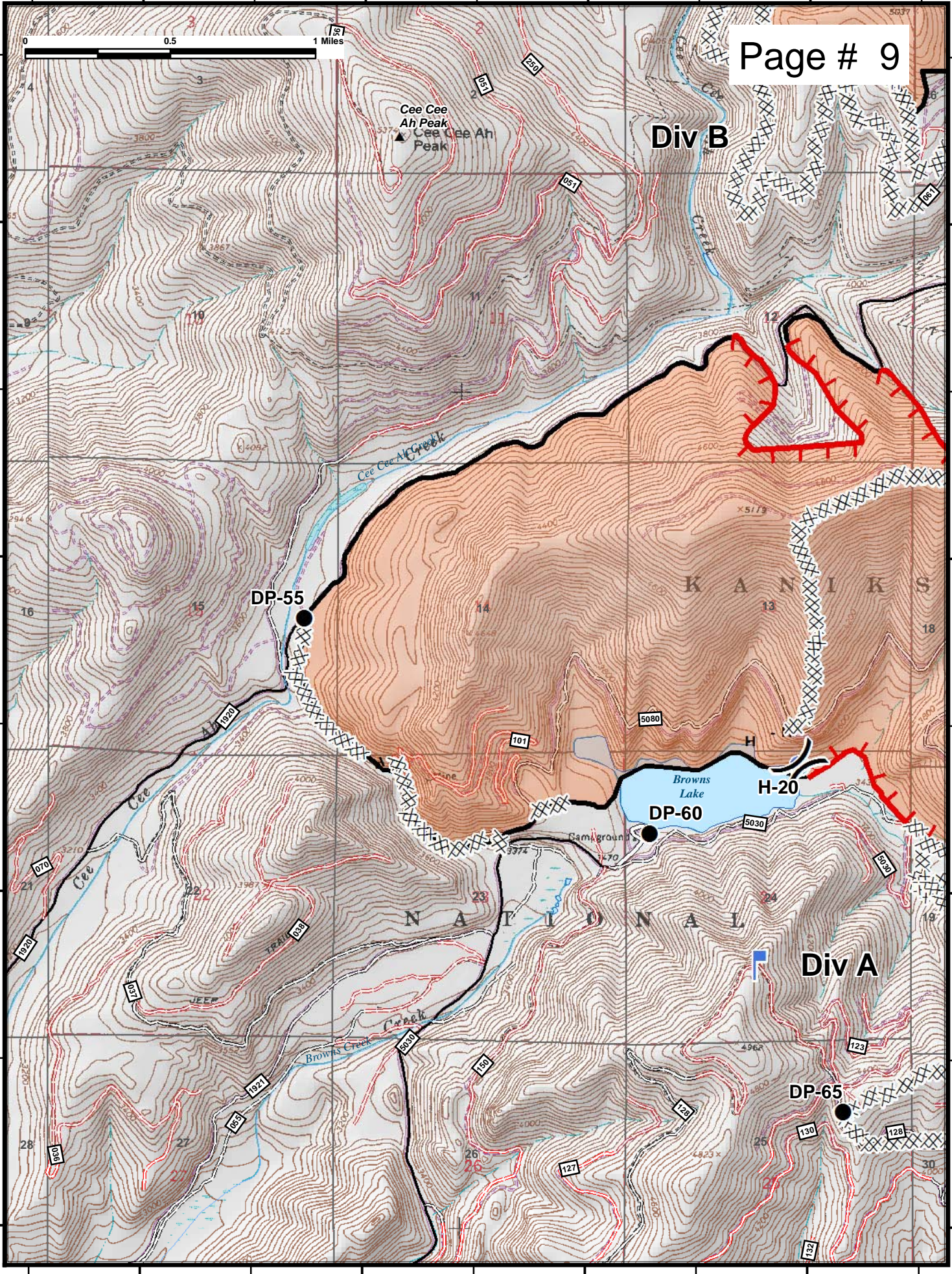
48°25'N

117°14'W

117°13'W

117°12'W

117°11'W



Cee Cee Ah Peak  
▲ Cee Cee Ah Peak

Div B

Browns Lake  
DP-60

Div A

DP-65

DP-55

H-20

KANAB

NATIONAL

191

209

191

191

191

191

101

5080

5030

5020

1920

1920

1920

1920

1920

1920

1920

1920

1920

1920

1920

1920

1920

1920

1920

1920

1920

1920

1920

1920

1920

1920

1920

1920

1920

1920

1920

1920

1920

1920

1920

1920

1920

1920

1920

1920

1920

1920

1920

1920

1920

1920

1920

1920

1920

1920

1920

1920

1920

1920

1920

1920

1920



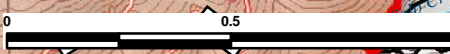


117°6'W

117°5'W

117°4'W

117°3'W



48°28'N

48°28'N

48°27'N

48°27'N

48°26'N

48°26'N

48°25'N

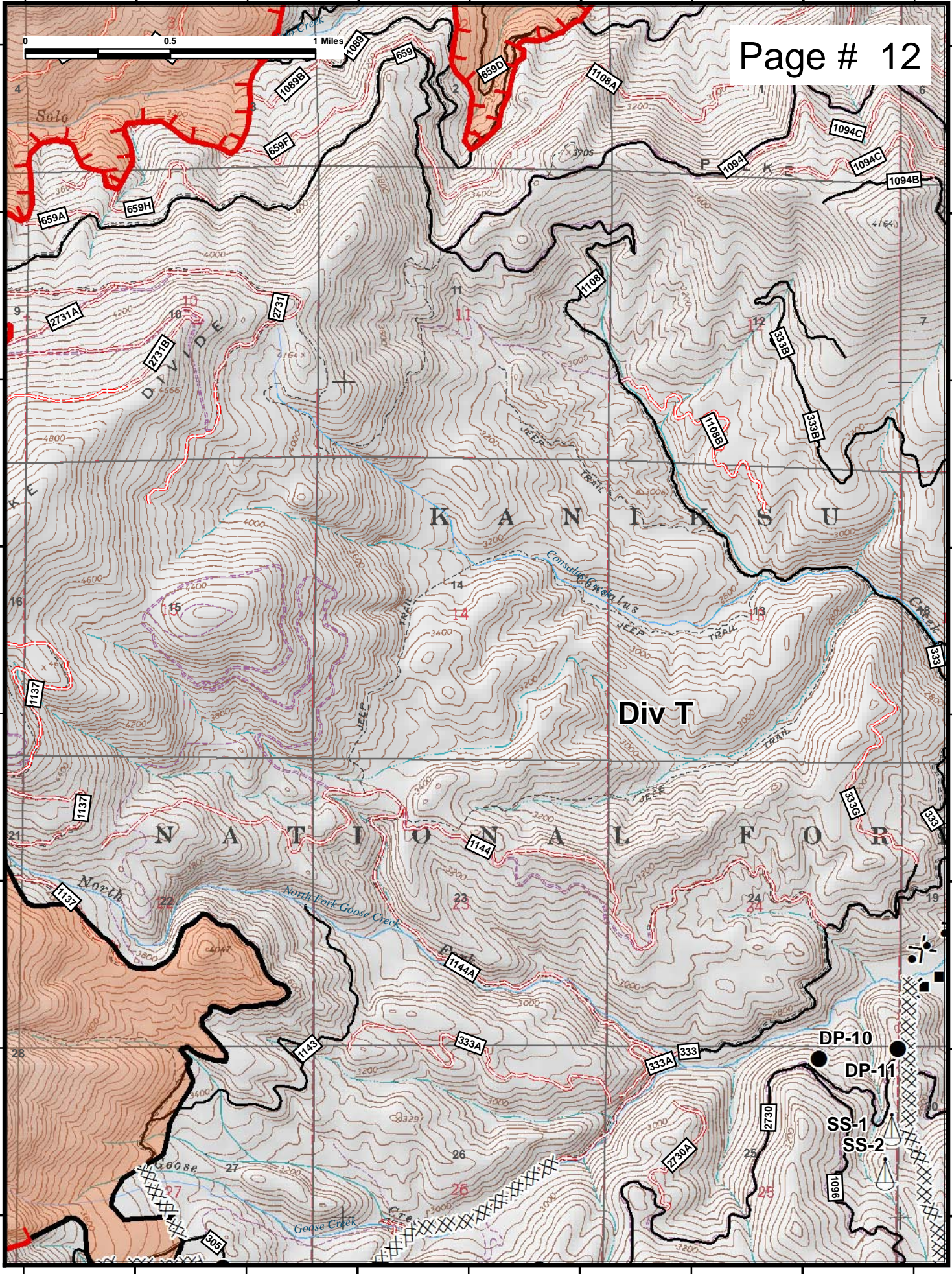
48°25'N

117°6'W

117°5'W

117°4'W

117°3'W



117°3'W

117°2'W

117°1'W

117°0'W

48°29'N

48°29'N

Page # 13

48°28'N

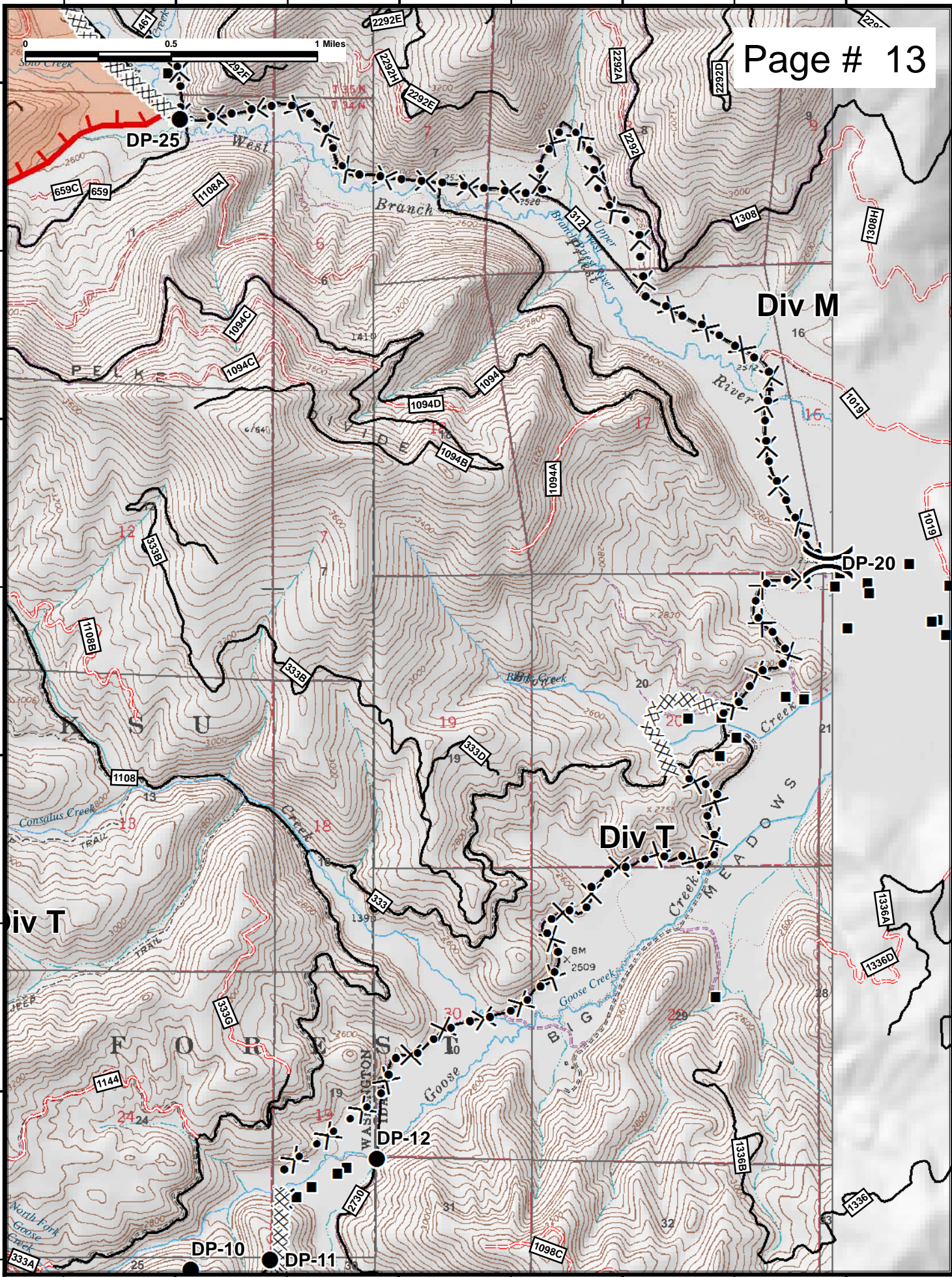
48°28'N

48°27'N

48°27'N

48°26'N

48°26'N



117°3'W

117°2'W

117°1'W

117°0'W

117°11'W

117°10'W

117°9'W

117°8'W

48°26'N

48°26'N

48°25'N

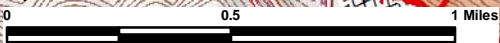
48°25'N

48°24'N

48°24'N

48°23'N

48°23'N



Div A

DP-65

DP-63

South Baldy C-1



North Skookum Lake

South Skookum Lake

Div Z

DP-1

Ojibway Knoll

Kings Mountain

North Park Skookum

Little Skookum

Ojibway Creek

117°11'W

117°10'W

117°9'W

117°8'W

117°8'W

117°7'W

117°6'W

117°5'W

48°26'N

48°26'N

48°25'N

48°25'N

48°24'N

48°24'N

48°23'N

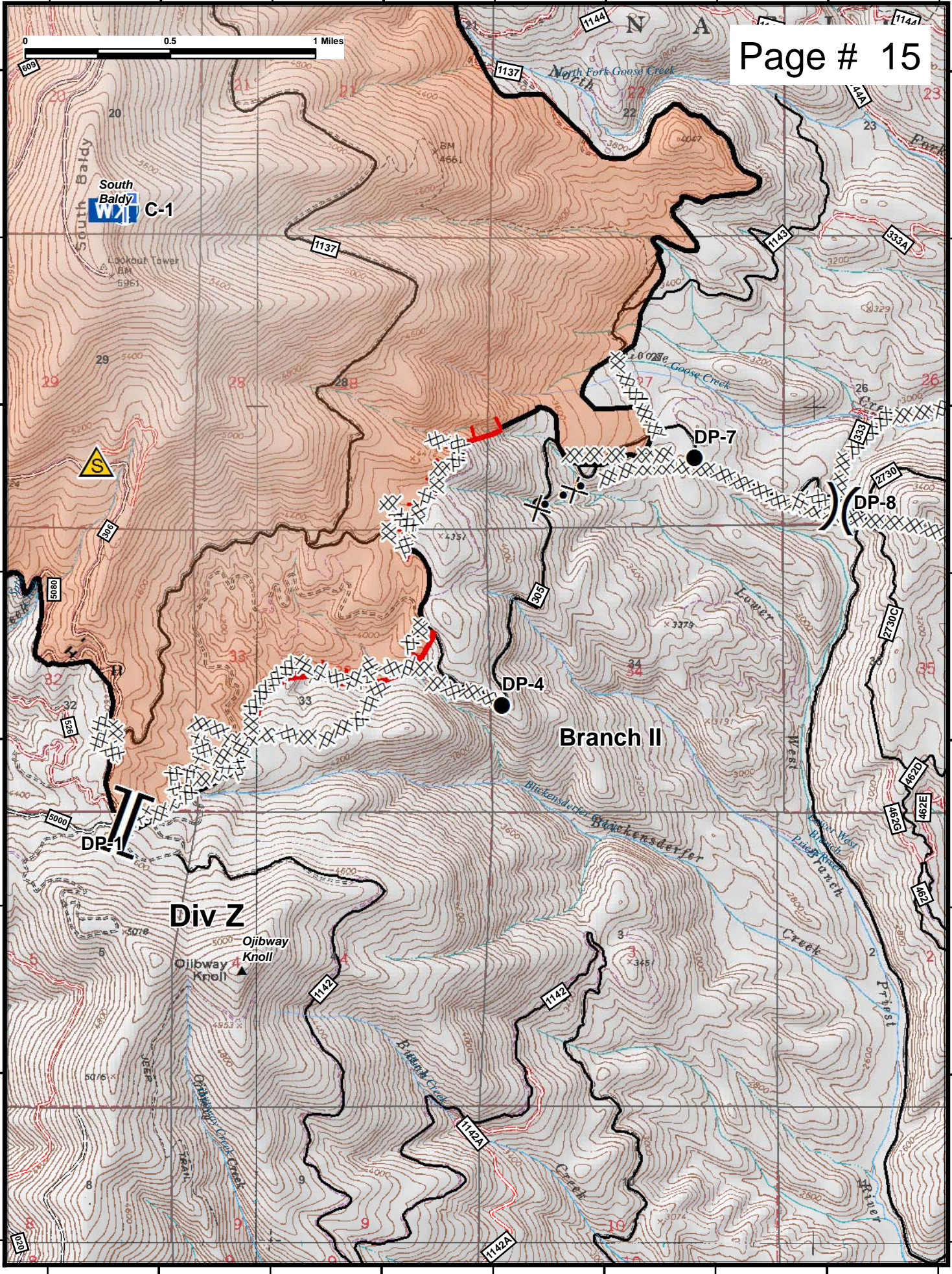
48°23'N

117°8'W

117°7'W

117°6'W

117°5'W



South Baldy

C-1



DP-1

DP-4

DP-7

DP-8

Branch II

Div Z

Ojibway Knoll

North Fork Goose Creek

Lower Goose Creek

Buckensdetfer

Buckensdetfer

Buckensdetfer

Buckensdetfer

Buckensdetfer

Buckensdetfer

Buckensdetfer

Buckensdetfer

Buckensdetfer

Buckensdetfer

Buckensdetfer

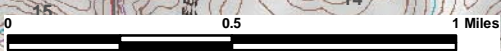
Buckensdetfer

117°5'W

117°4'W

117°3'W

117°2'W



Page # 16

Div T

48°26'N

48°26'N

48°25'N

48°25'N

48°24'N

48°24'N

48°23'N

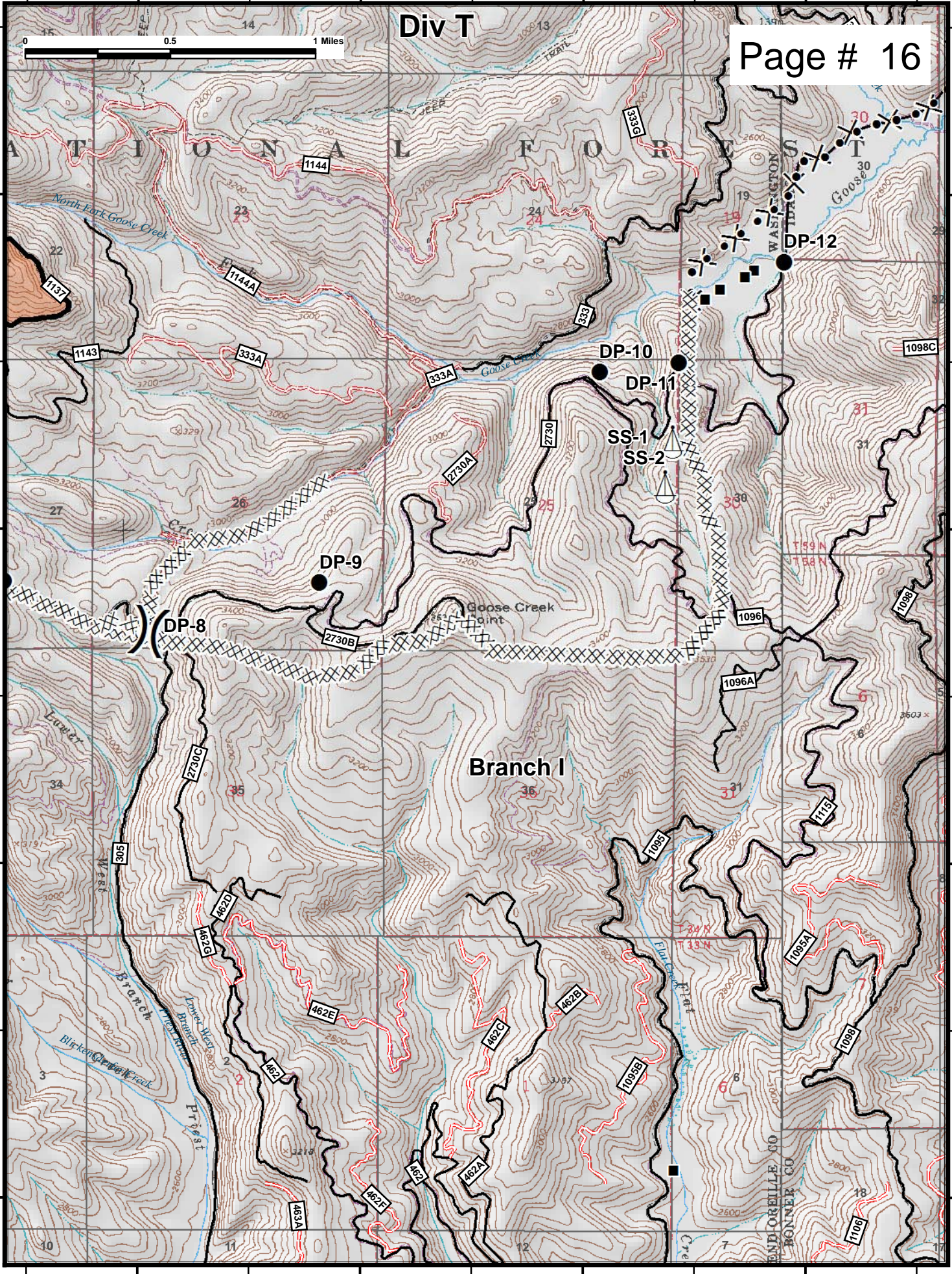
48°23'N

117°5'W

117°4'W

117°3'W

117°2'W



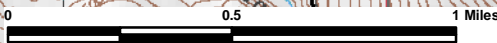


117°15'W

117°14'W

117°13'W

117°12'W



48°45'N

48°45'N

48°44'N

48°44'N

48°43'N

48°43'N

Div Onata

Onata/Grease Staging

Branch III

Molybdenite

Mountain

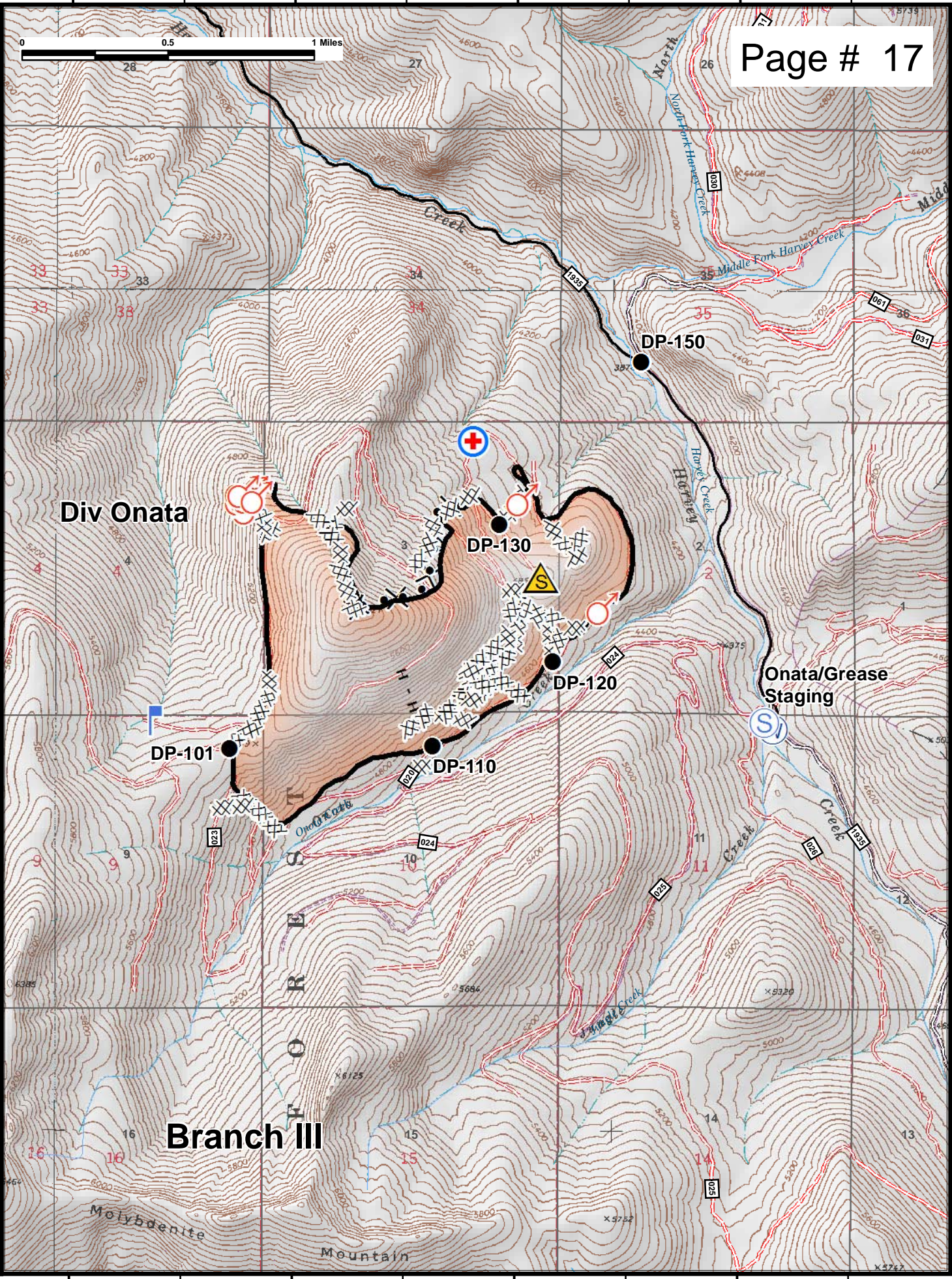
DP-101

DP-130

DP-150

DP-120

DP-110



117°14'W

117°13'W

117°12'W

117°11'W

117°10'W

48°49'N

48°49'N

48°48'N

48°48'N

48°47'N

48°47'N

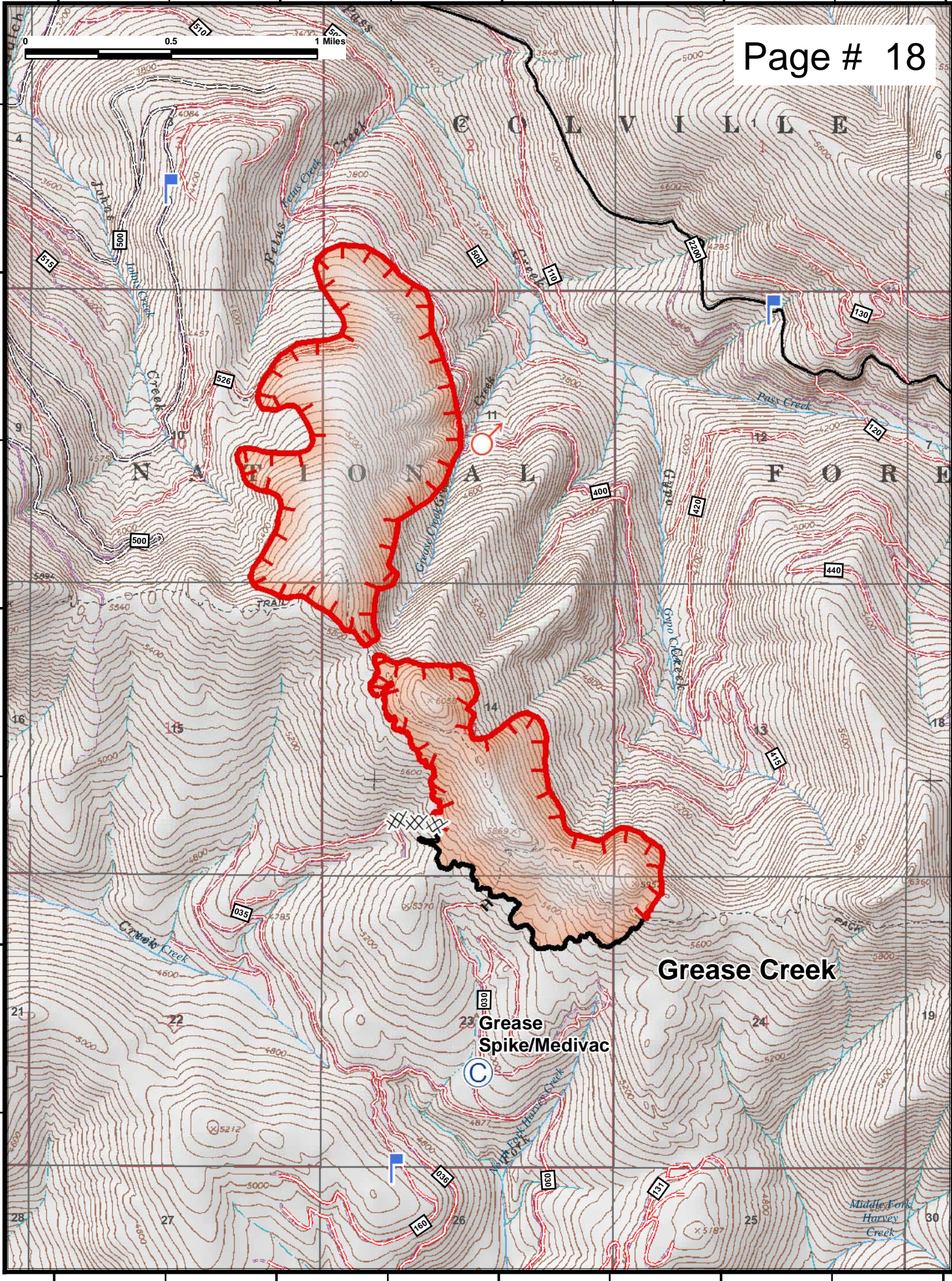
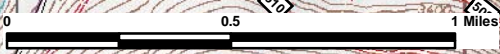
117°14'W

117°13'W

117°12'W

117°11'W

117°10'W



Grease Creek

Grease Spike/Medivac

C