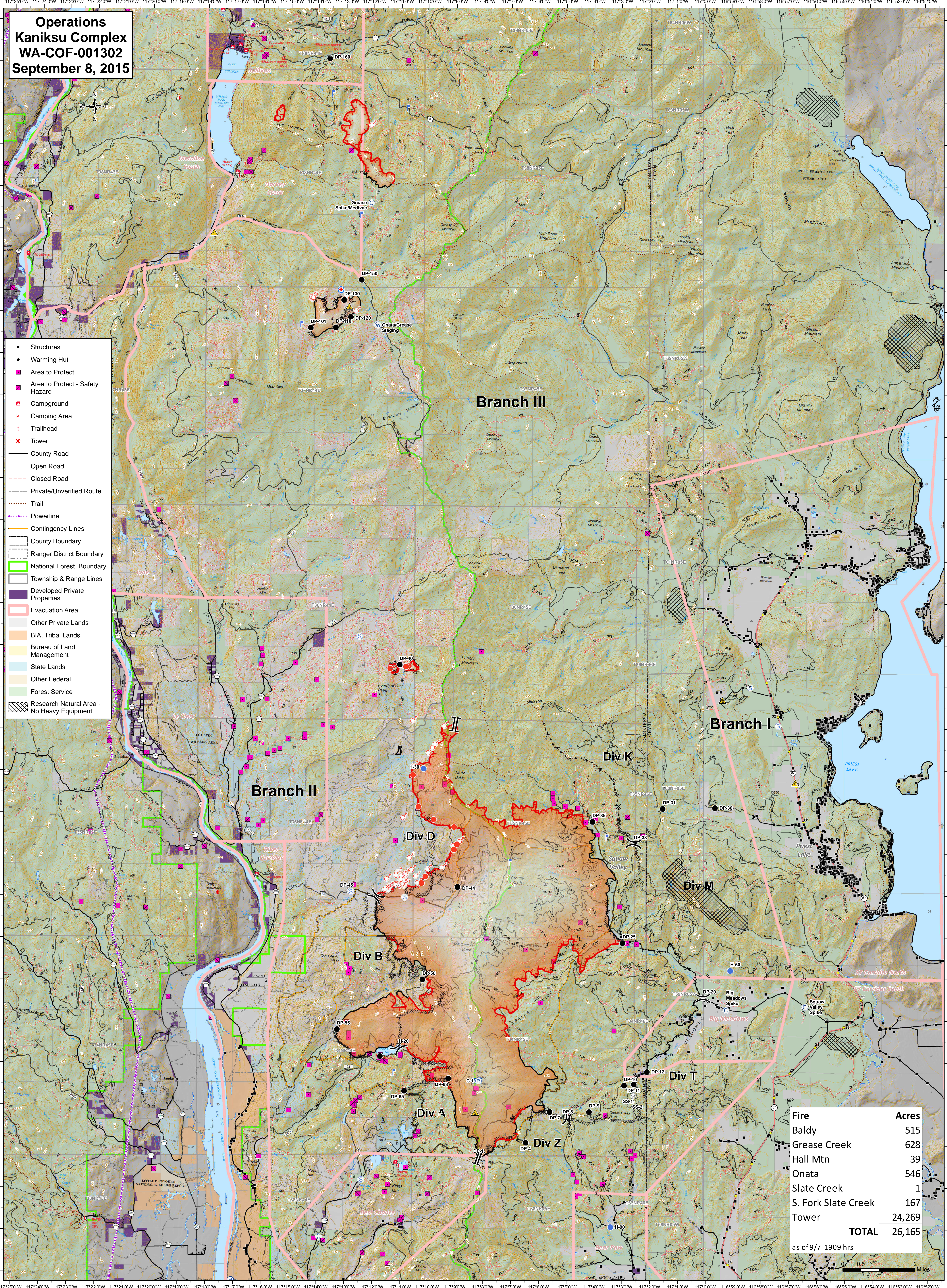


**Operations  
Kaniksu Complex  
WA-COF-001302  
September 8, 2015**



- Structures
- Warming Hut
- Area to Protect
- Area to Protect - Safety Hazard
- Campground
- Camping Area
- ↑ Trailhead
- Tower
- County Road
- Open Road
- - - Closed Road
- - - Private/Unverified Route
- ⋯ Trail
- Powerline
- Contingency Lines
- County Boundary
- Ranger District Boundary
- National Forest Boundary
- Township & Range Lines
- Developed Private Properties
- Evacuation Area
- Other Private Lands
- BIA, Tribal Lands
- Bureau of Land Management
- State Lands
- Other Federal
- Forest Service
- Research Natural Area - No Heavy Equipment

Fire	Acres
Baldy	515
Grease Creek	628
Hall Mtn	39
Onata	546
Slate Creek	1
S. Fork Slate Creek	167
Tower	24,269
<b>TOTAL</b>	<b>26,165</b>

as of 9/7 1909 hrs

