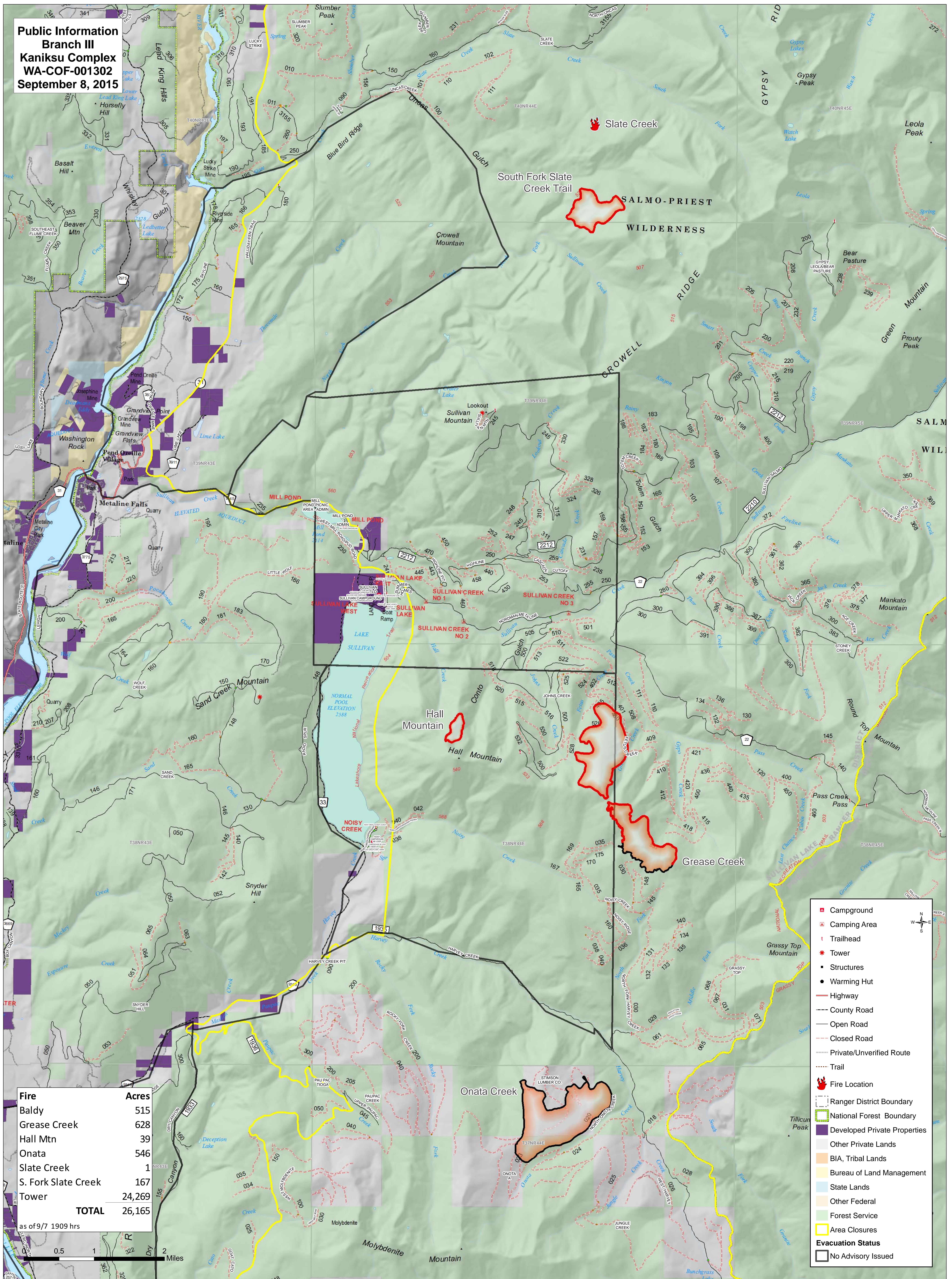


**Public Information
Branch III
Kaniksu Complex
WA-COF-001302
September 8, 2015**



Fire	Acres
Baldy	515
Grease Creek	628
Hall Mtn	39
Onata	546
Slate Creek	1
S. Fork Slate Creek	167
Tower	24,269
TOTAL	26,165

as of 9/7 1909 hrs

0 0.5 1 2 Miles

- ▣ Campground
- ▣ Camping Area
- ▣ Trailhead
- ★ Tower
- ▣ Structures
- Warming Hut
- Highway
- County Road
- Open Road
- Closed Road
- Private/Unverified Route
- Trail
- 🔥 Fire Location
- ▣ Ranger District Boundary
- ▣ National Forest Boundary
- ▣ Developed Private Properties
- ▣ Other Private Lands
- ▣ BIA, Tribal Lands
- ▣ Bureau of Land Management
- ▣ State Lands
- ▣ Other Federal
- ▣ Forest Service
- ▣ Area Closures
- ▣ Evacuation Status
- ▣ No Advisory Issued