

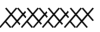










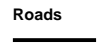


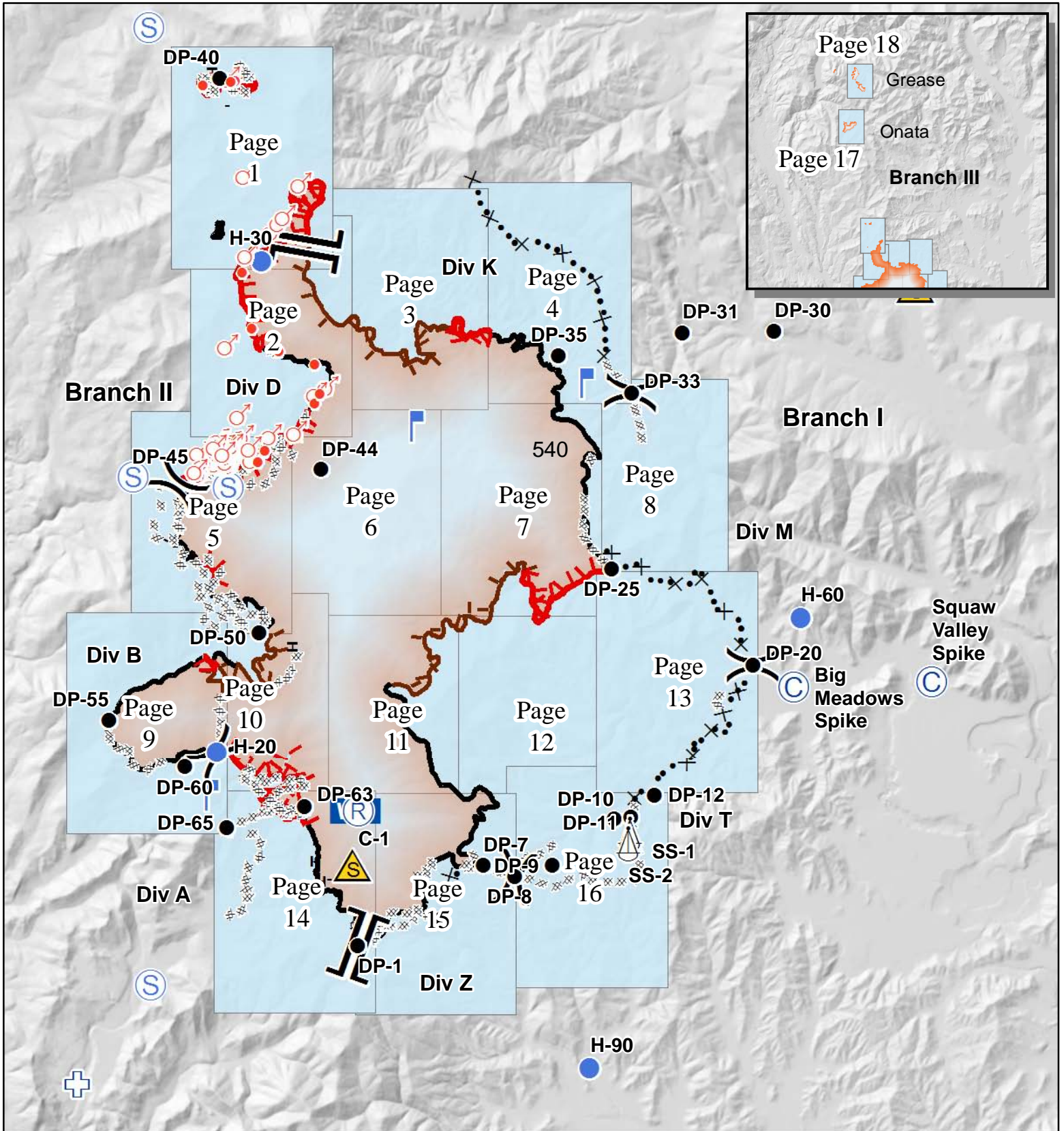


Kaniksu Complex WA-COF-001302 IAP Maps September 11, 2015

Fire	Acres
Baldy	515
Grease Creek	628
Hall Mtn	39
Onata	546
Slate Creek	1
S. Fork Slate Creek	167
Tower	24,252
TOTAL	26,148

as of 9/9 2100 hrs

 Hot Spot	 Safety Zone	 Completed Dozer Line
 Sling Site	 Spot Fire	 Hand Line
 Camp	 Staging Area	 Proposed Dozer Line
 Drop Point	 First Aid Station	 Limited Action Line - Minimal Threat
 Lookout		 Uncontrolled Fire Edge
		Roads
		 Open
		 Closed

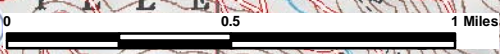


117°12'W

117°11'W

117°10'W

117°9'W



48°36'N

48°36'N

48°35'N

48°35'N

48°34'N

48°34'N

48°33'N

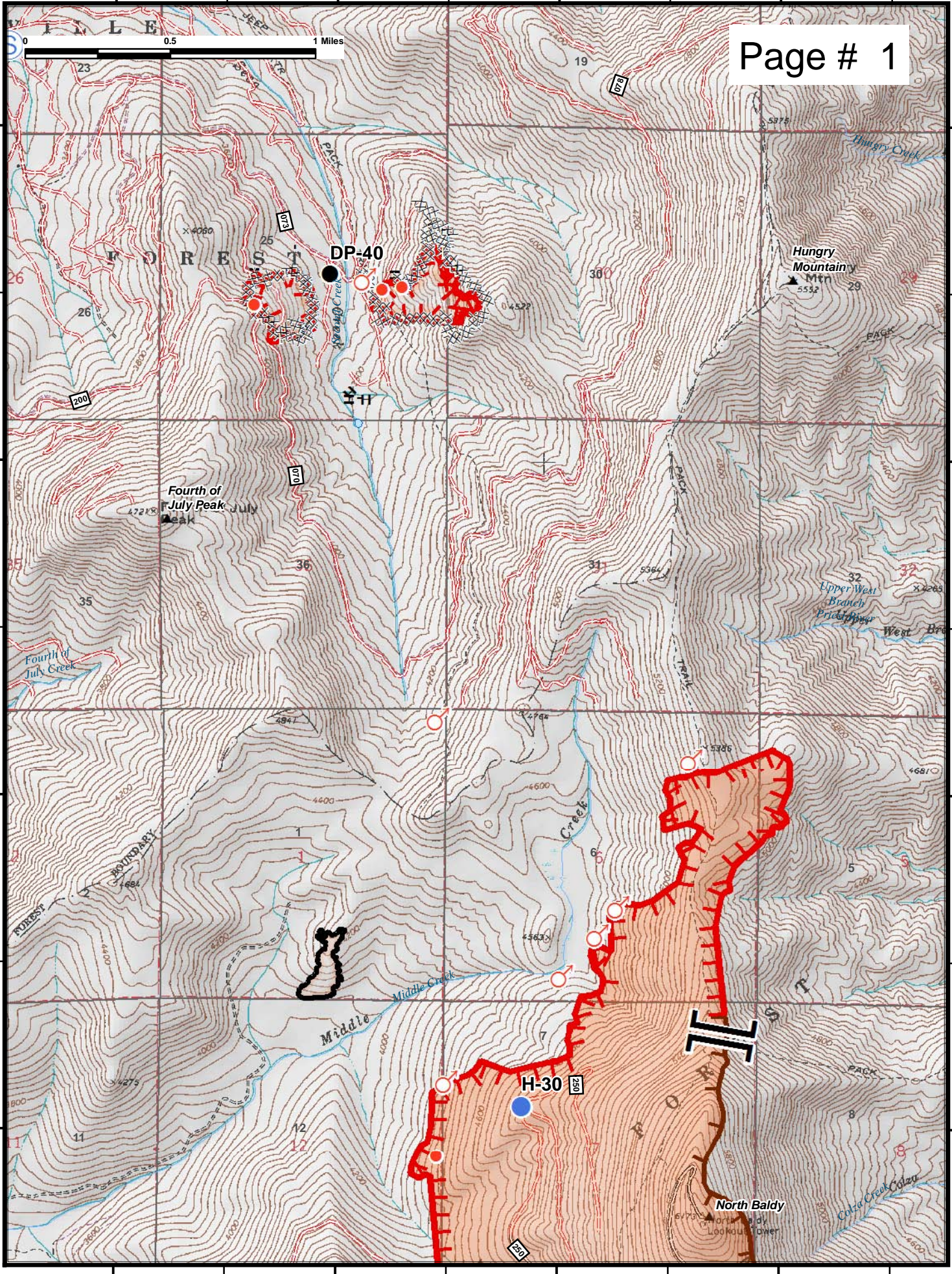
48°33'N

117°12'W

117°11'W

117°10'W

117°9'W

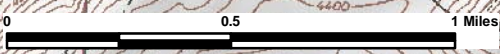


117°12'W 117°11'W 117°10'W 117°9'W 117°8'W

48°34'N

48°34'N

Page # 2



48°33'N

48°33'N

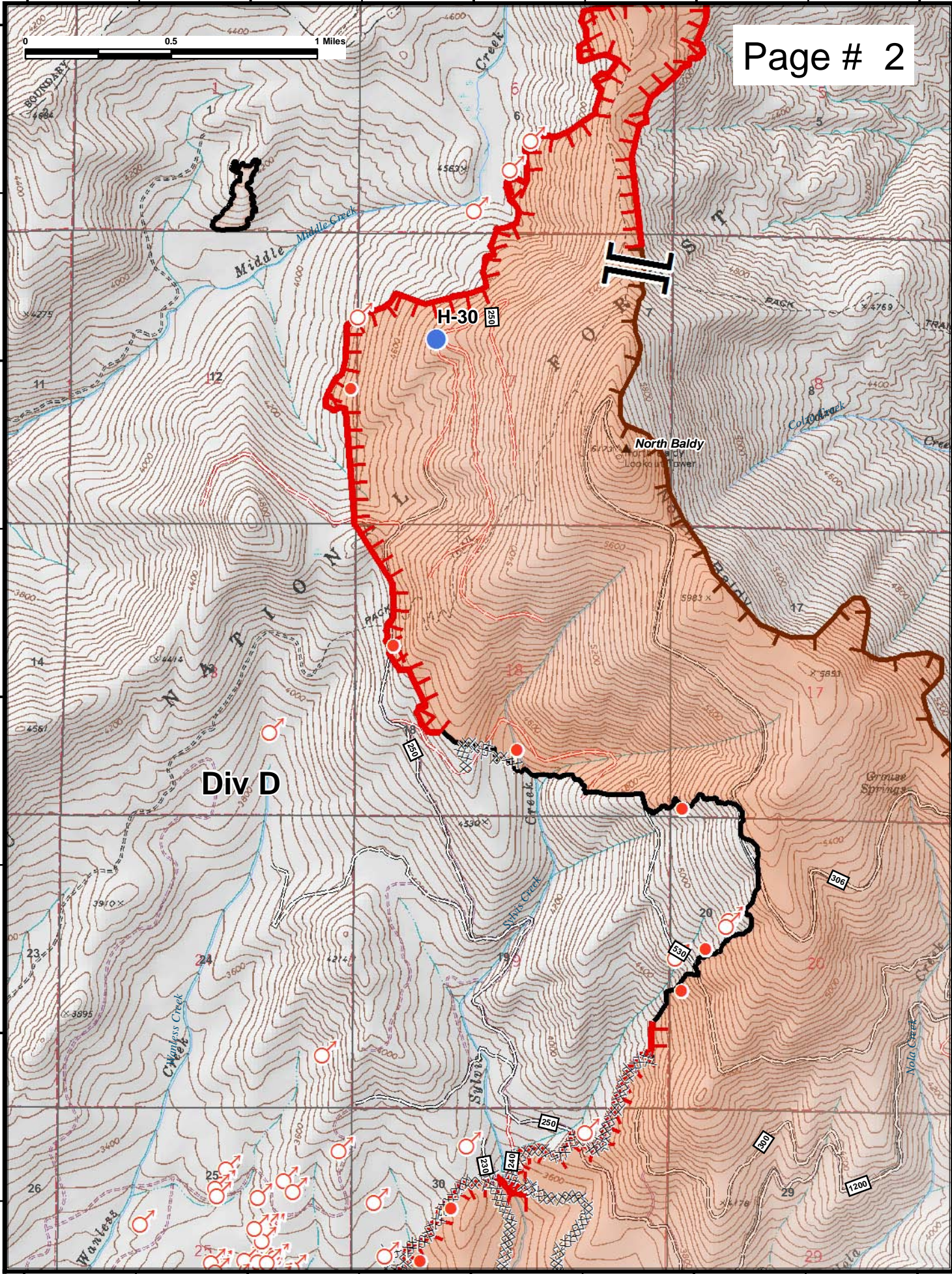
48°32'N

48°32'N

48°31'N

48°31'N

117°12'W 117°11'W 117°10'W 117°9'W 117°8'W



117°9'W

117°8'W

117°7'W

117°6'W



Page # 3

48°34'N

48°34'N

48°33'N

48°33'N

48°32'N

48°32'N

48°31'N

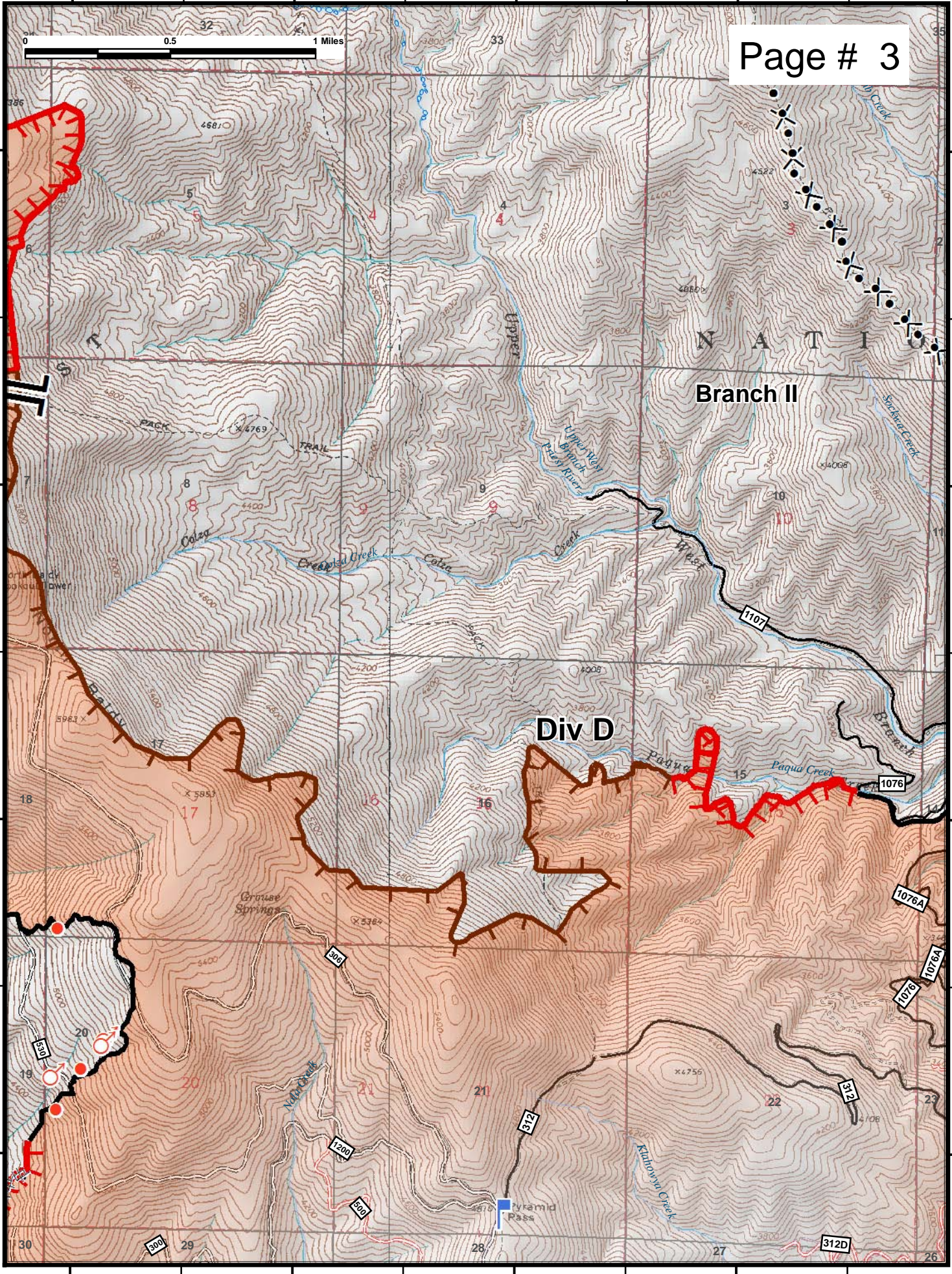
48°31'N

117°9'W

117°8'W

117°7'W

117°6'W

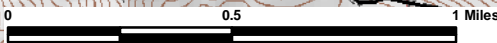


117°6'W

117°5'W

117°4'W

117°3'W



Page # 4

48°34'N

48°34'N

48°33'N

48°33'N

48°32'N

48°32'N

48°31'N

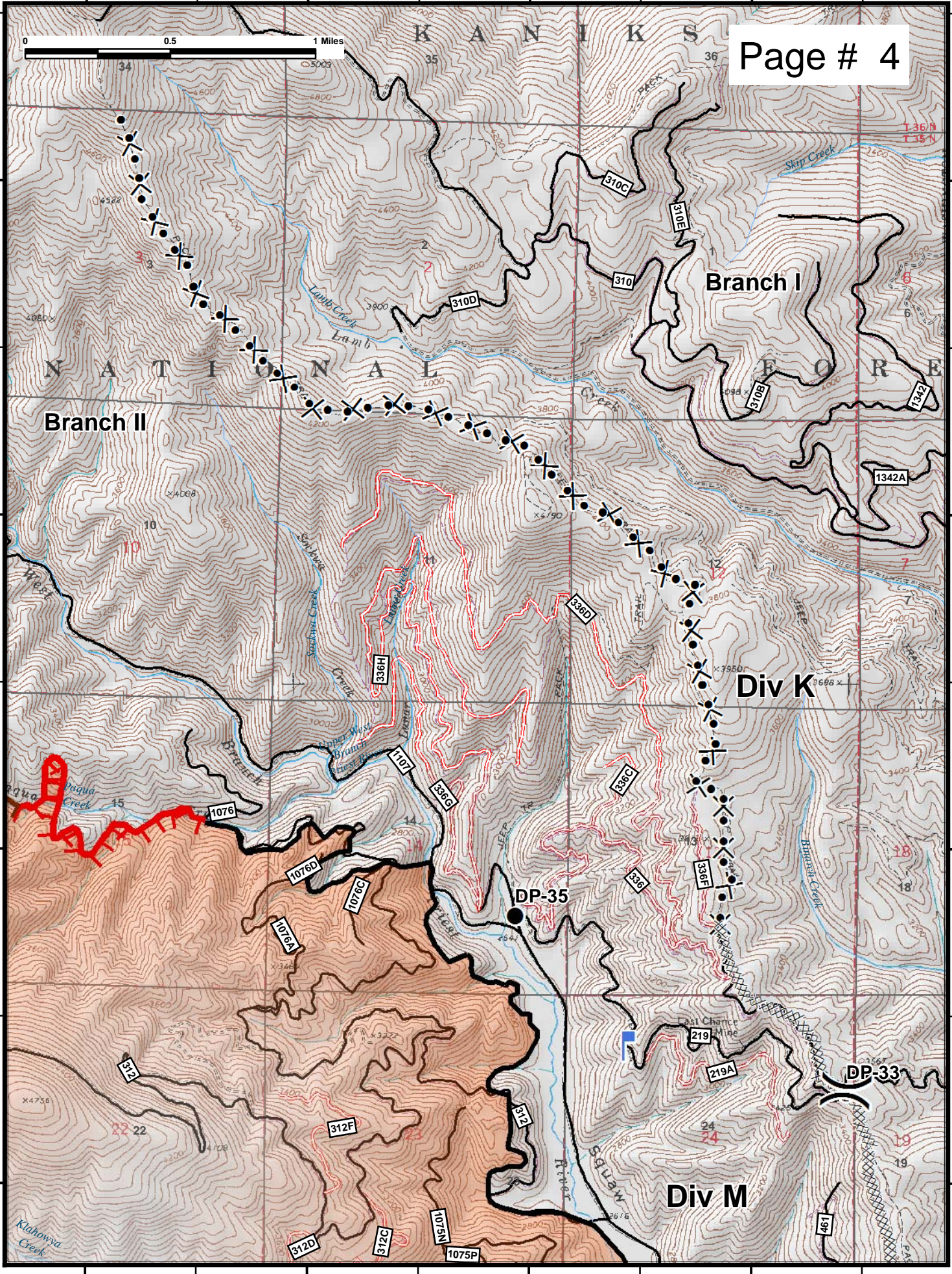
48°31'N

117°6'W

117°5'W

117°4'W

117°3'W



117°13'W

117°12'W

117°11'W

117°10'W

Page # 5

48°31'N

48°31'N

48°30'N

48°30'N

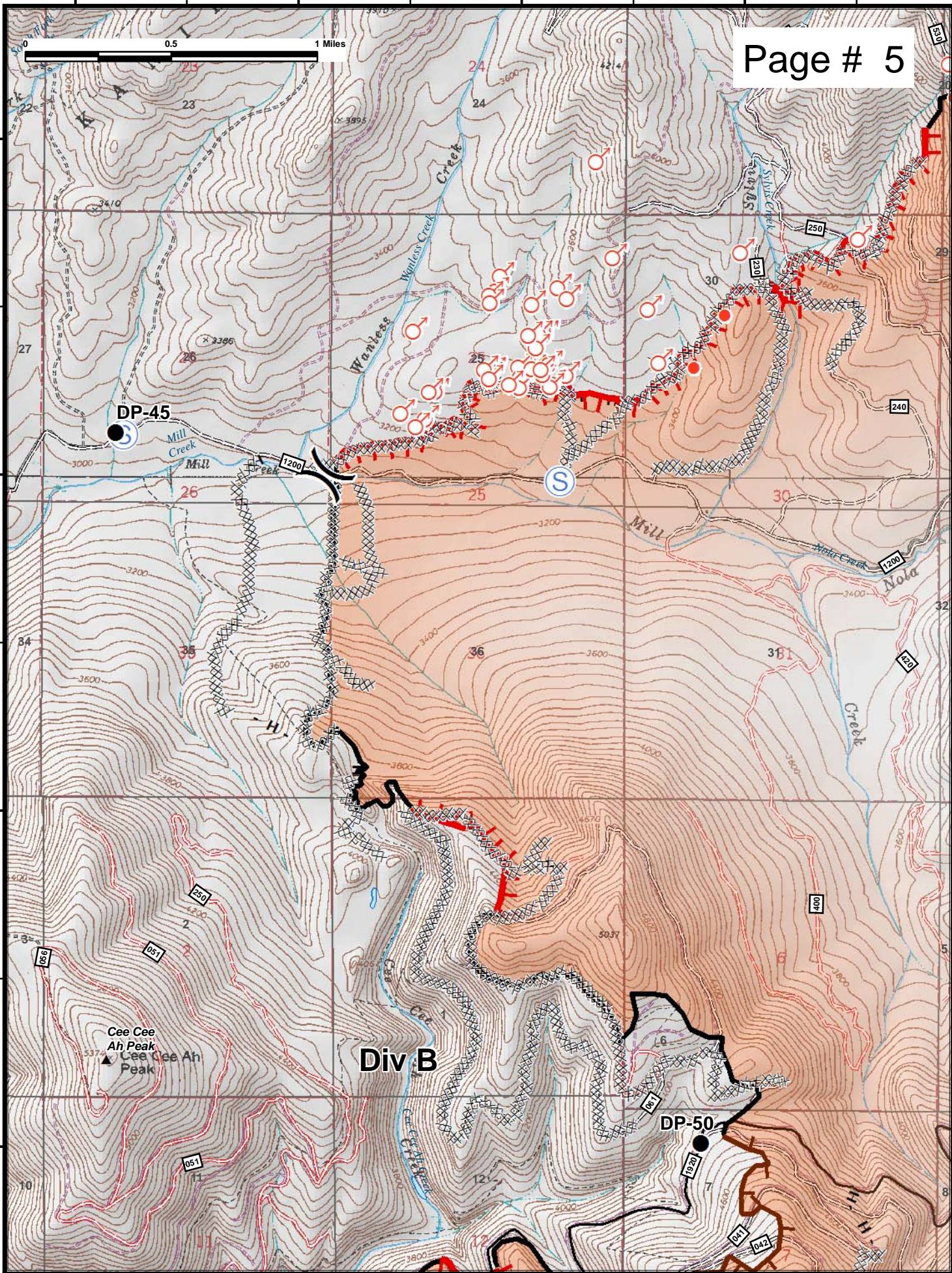
48°29'N

48°29'N

48°28'N

48°28'N

0 0.5 1 Miles



117°13'W

117°12'W

117°11'W

117°10'W

117°10'W

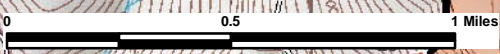
117°9'W

117°8'W

117°7'W

117°6'W

Page # 6



48°31'N

48°31'N

48°30'N

48°30'N

48°29'N

48°29'N

48°28'N

48°28'N

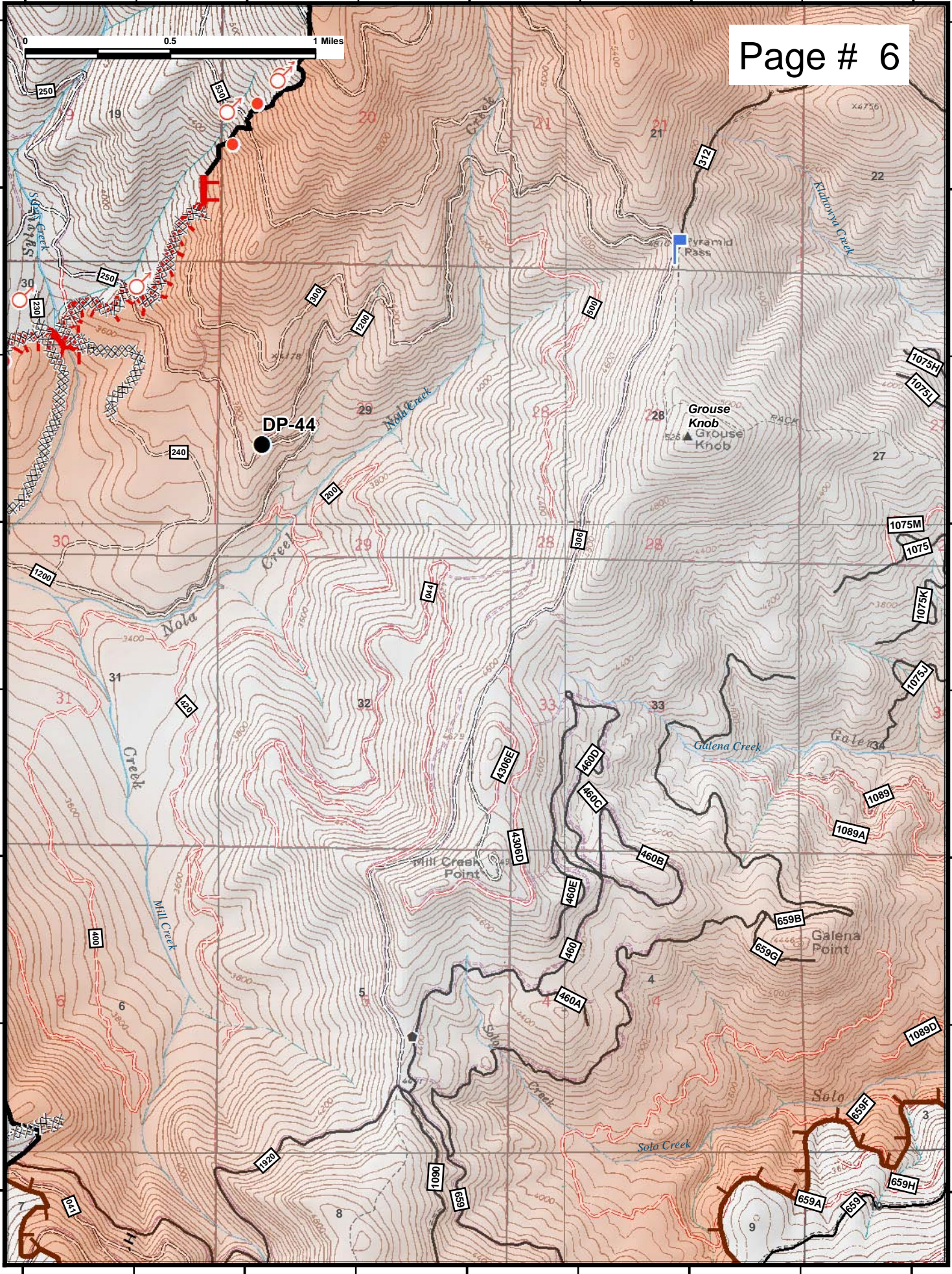
117°10'W

117°9'W

117°8'W

117°7'W

117°6'W

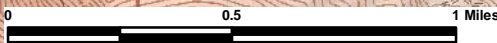


117°6'W

117°5'W

117°4'W

117°3'W



Page # 7

48°31'N

48°31'N

Div M

48°30'N

48°30'N

48°29'N

48°29'N

DP-25

48°28'N

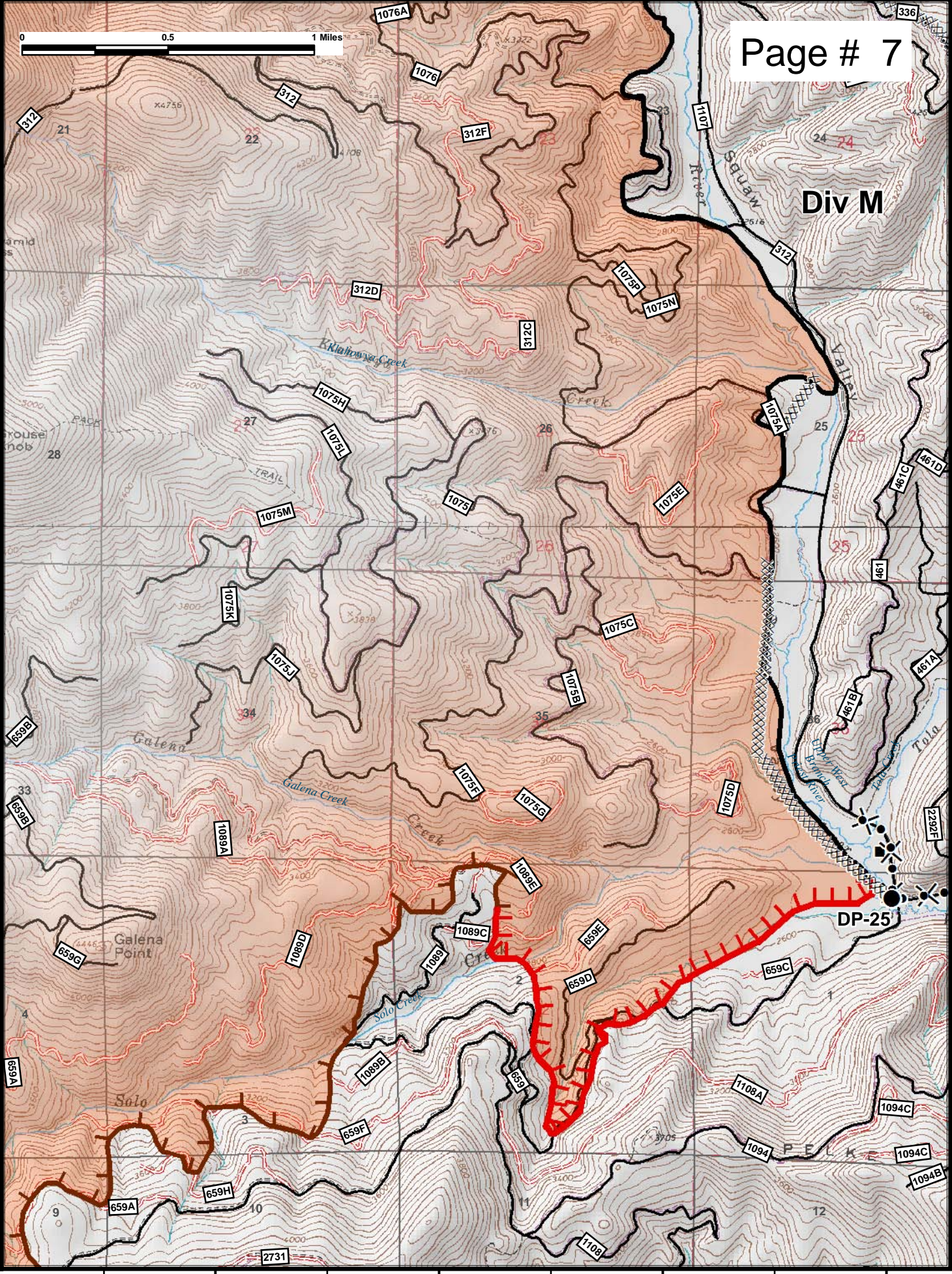
48°28'N

117°6'W

117°5'W

117°4'W

117°3'W



117°4'W

117°3'W

117°2'W

117°1'W

48°31'N

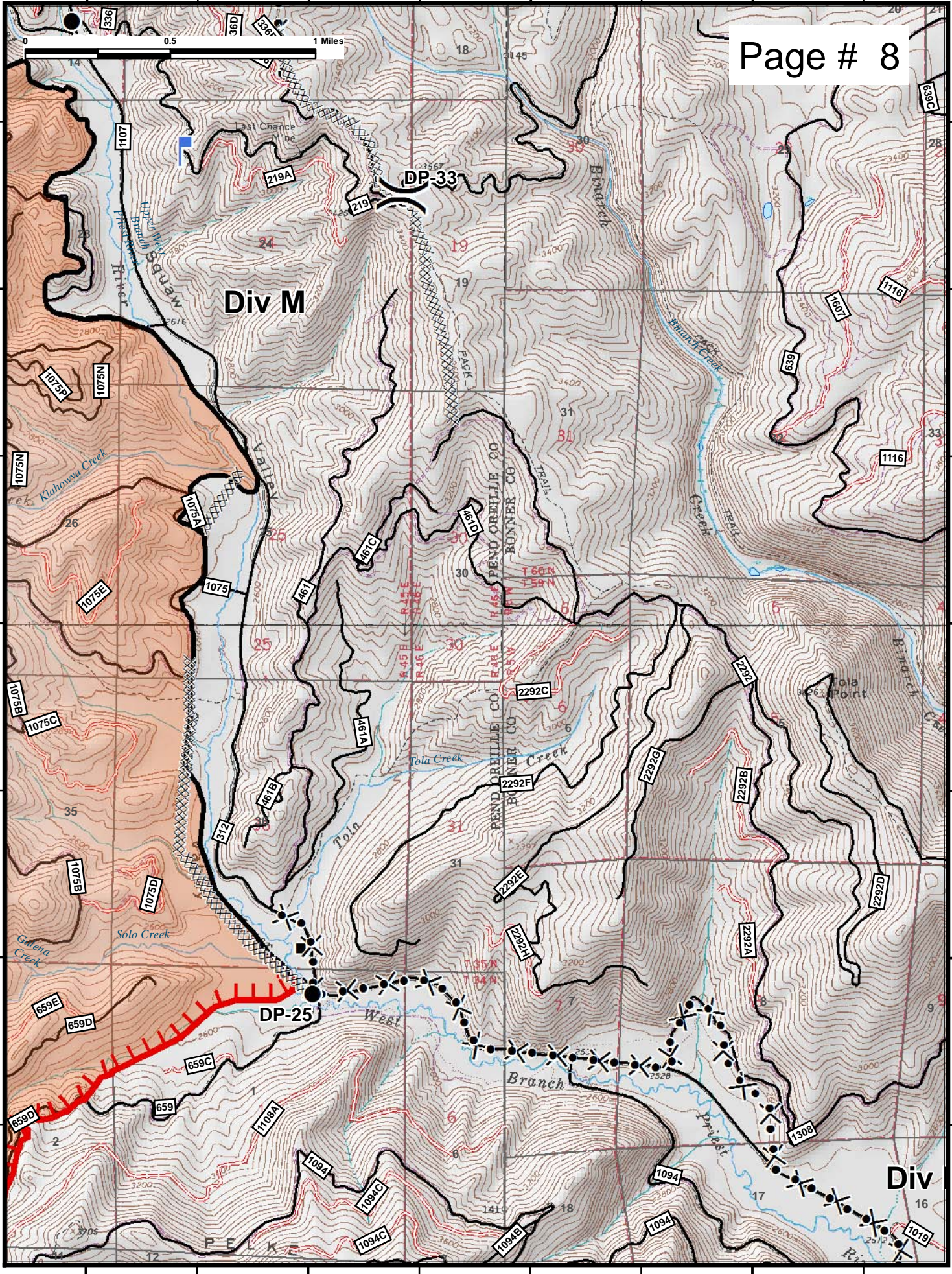
48°31'N

48°30'N

48°30'N

48°29'N

48°29'N



117°4'W

117°3'W

117°2'W

117°1'W

117°14'W

117°13'W

117°12'W

117°11'W

Div B

Div A

DP-55

DP-60

DP-65

Browns Lake

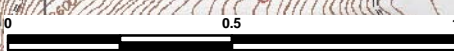
Cee Cee Ah Peak
▲ Cee Cee Ah Peak

H-20

Cam ground

NATIONAL

KANIKS



48°28'N

48°28'N

48°27'N

48°27'N

48°26'N

48°26'N

48°25'N

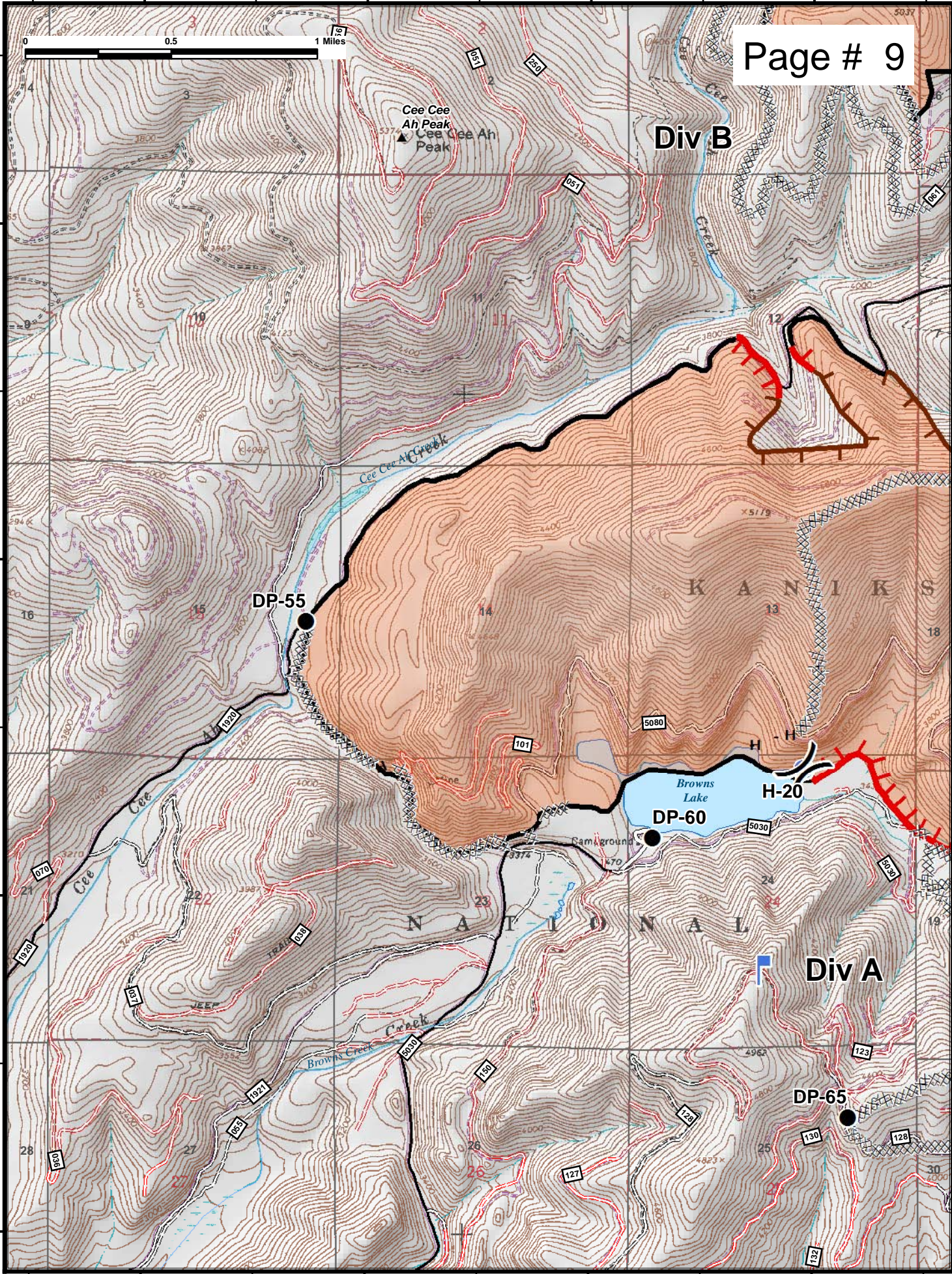
48°25'N

117°14'W

117°13'W

117°12'W

117°11'W



117°12'W

117°11'W

117°10'W

117°9'W



48°28'N

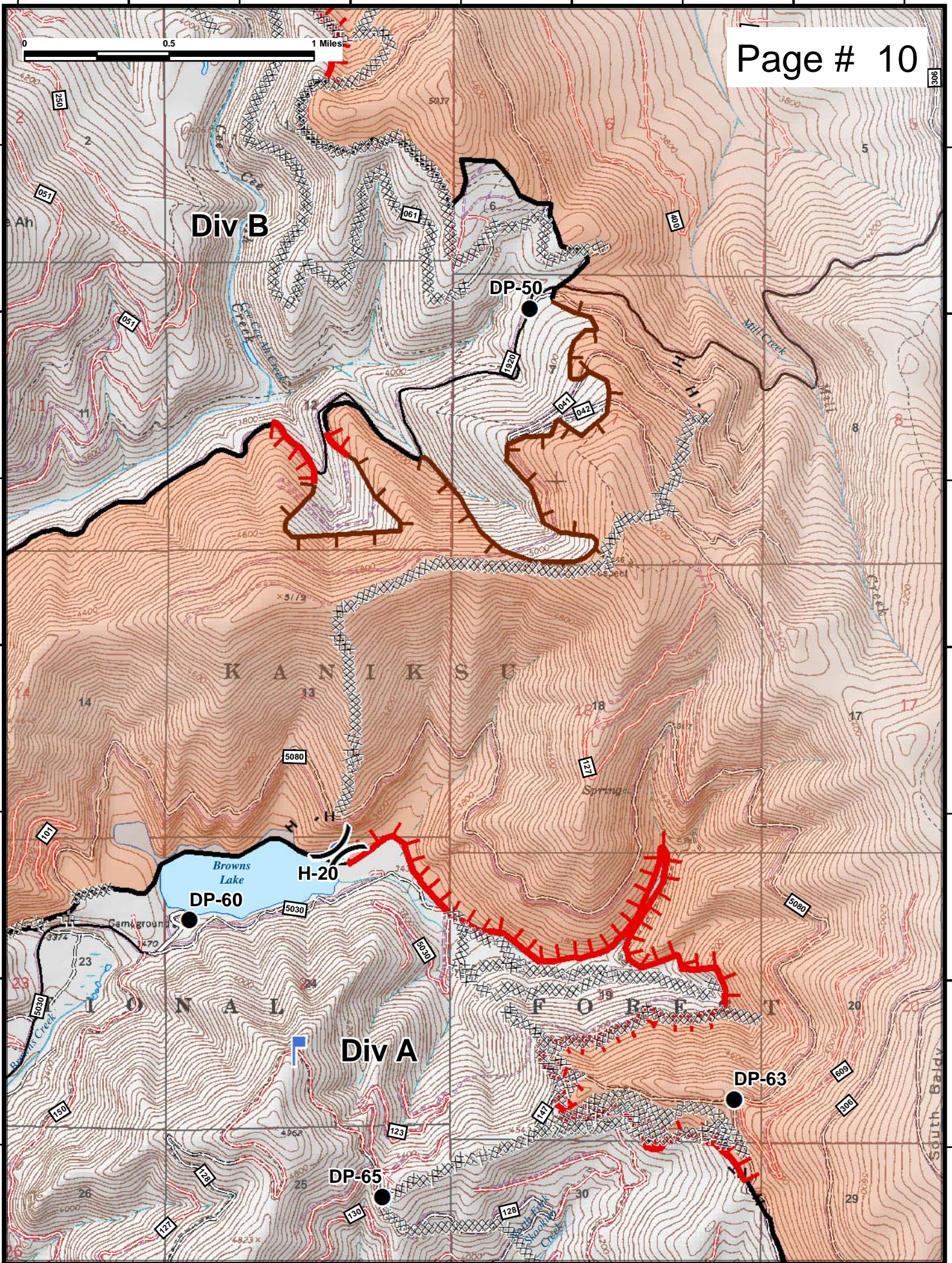
48°28'N

48°27'N

48°27'N

48°26'N

48°26'N



117°12'W

117°11'W

117°10'W

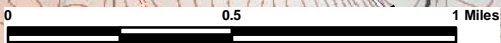
117°9'W

117°9'W

117°8'W

117°7'W

117°6'W



Page # 11

48°28'N

48°28'N

48°27'N

48°27'N

48°26'N

48°26'N

48°25'N

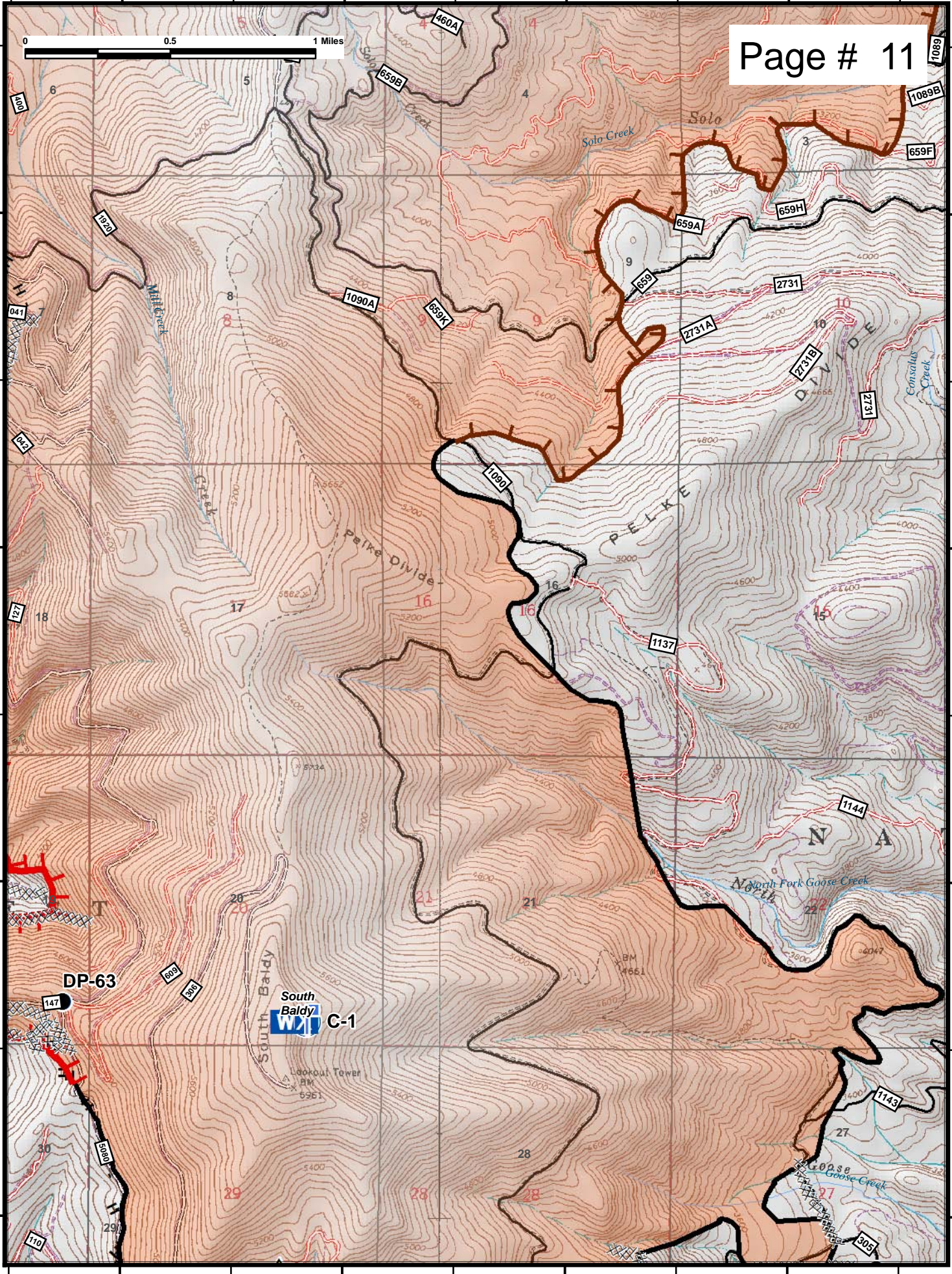
48°25'N

117°9'W

117°8'W

117°7'W

117°6'W

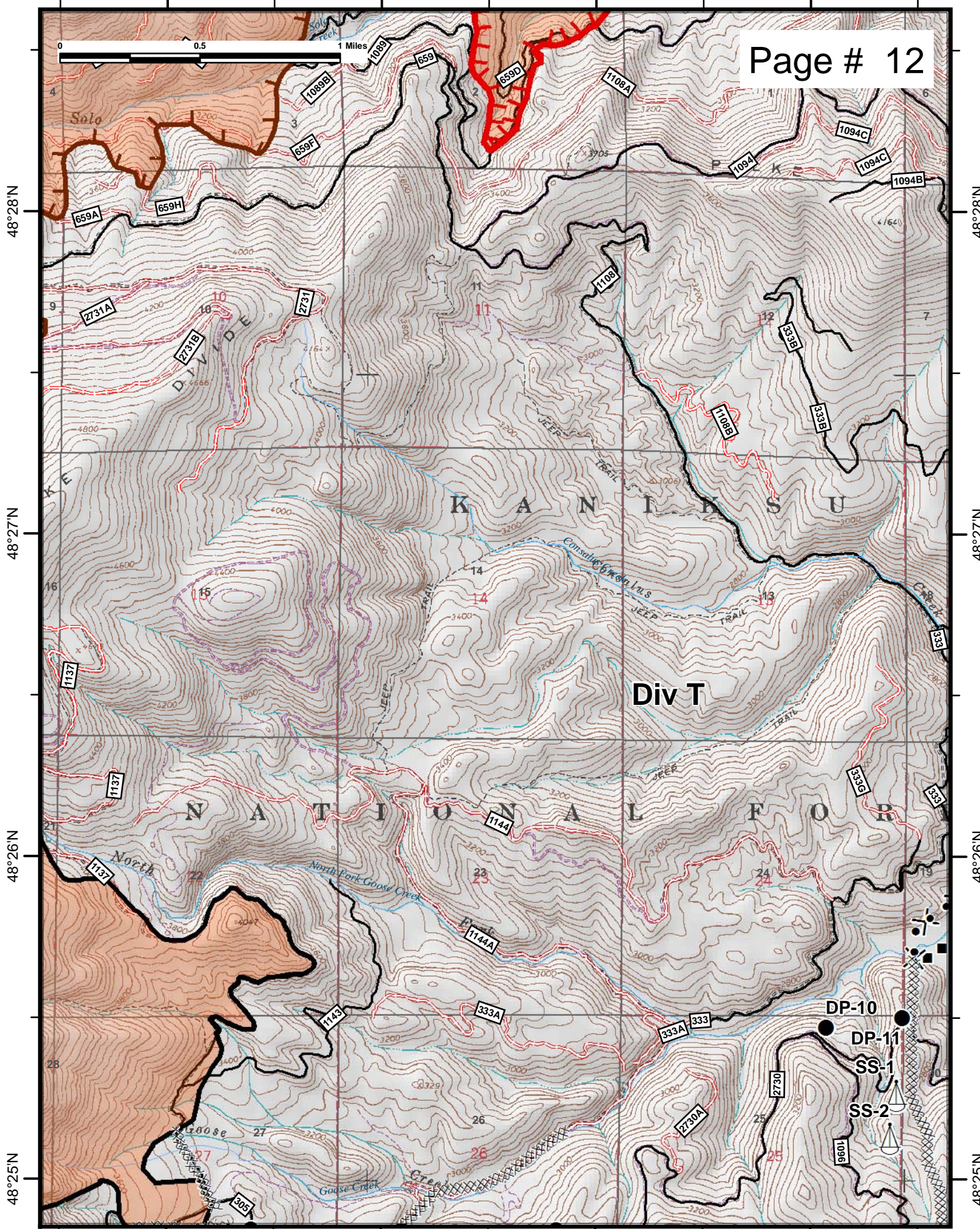


117°6'W

117°5'W

117°4'W

117°3'W



48°28'N

48°28'N

48°27'N

48°27'N

48°26'N

48°26'N

48°25'N

48°25'N

117°6'W

117°5'W

117°4'W

117°3'W

Div T

DP-10

DP-11

SS-1

SS-2

9601

117°3'W

117°2'W

117°1'W

117°0'W

48°29'N

48°29'N

48°28'N

48°28'N

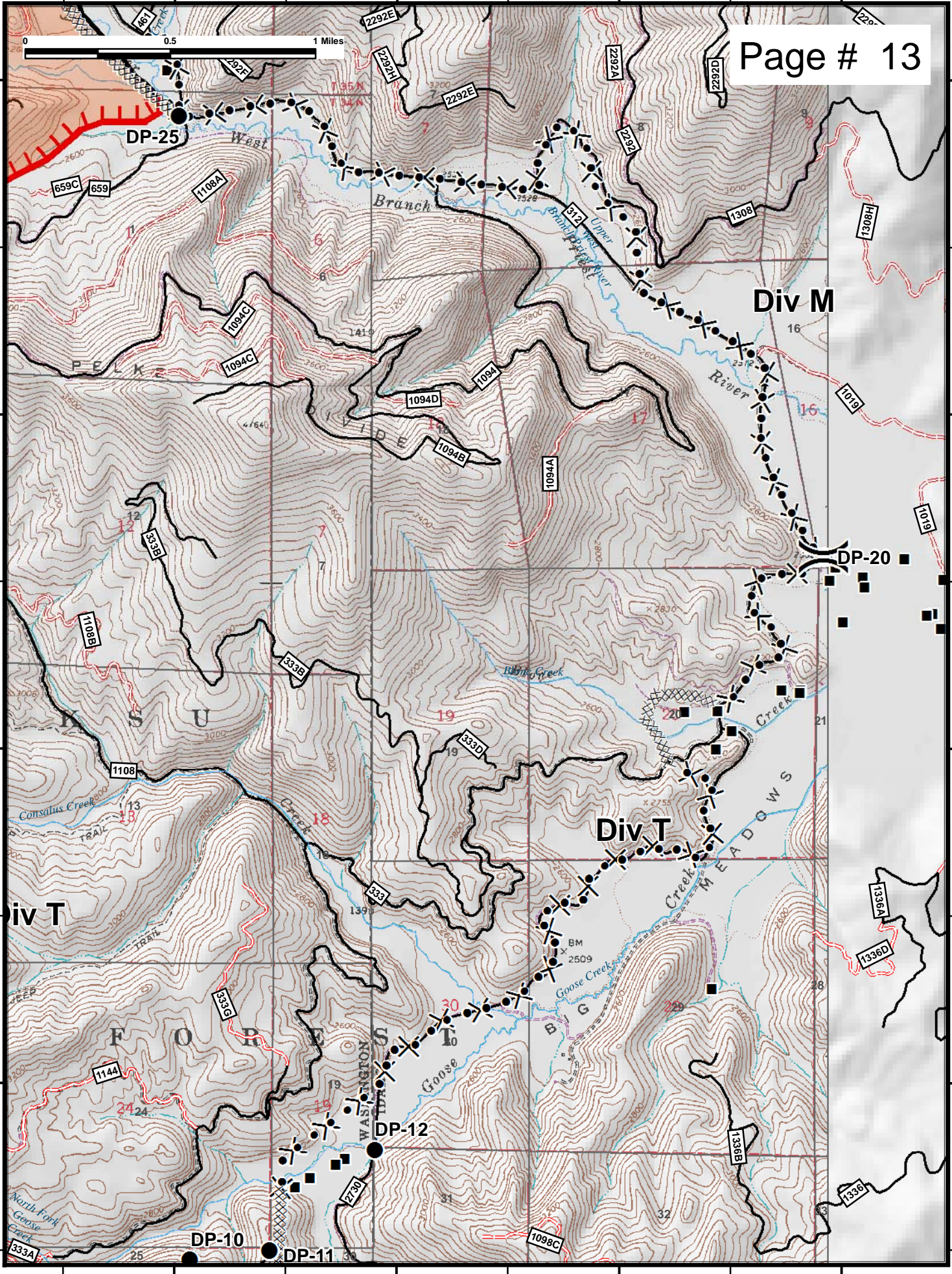
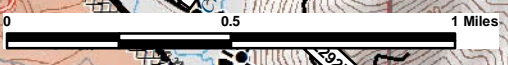
48°27'N

48°27'N

48°26'N

48°26'N

Page # 13



117°11'W

117°10'W

117°9'W

117°8'W

48°26'N

48°26'N

48°25'N

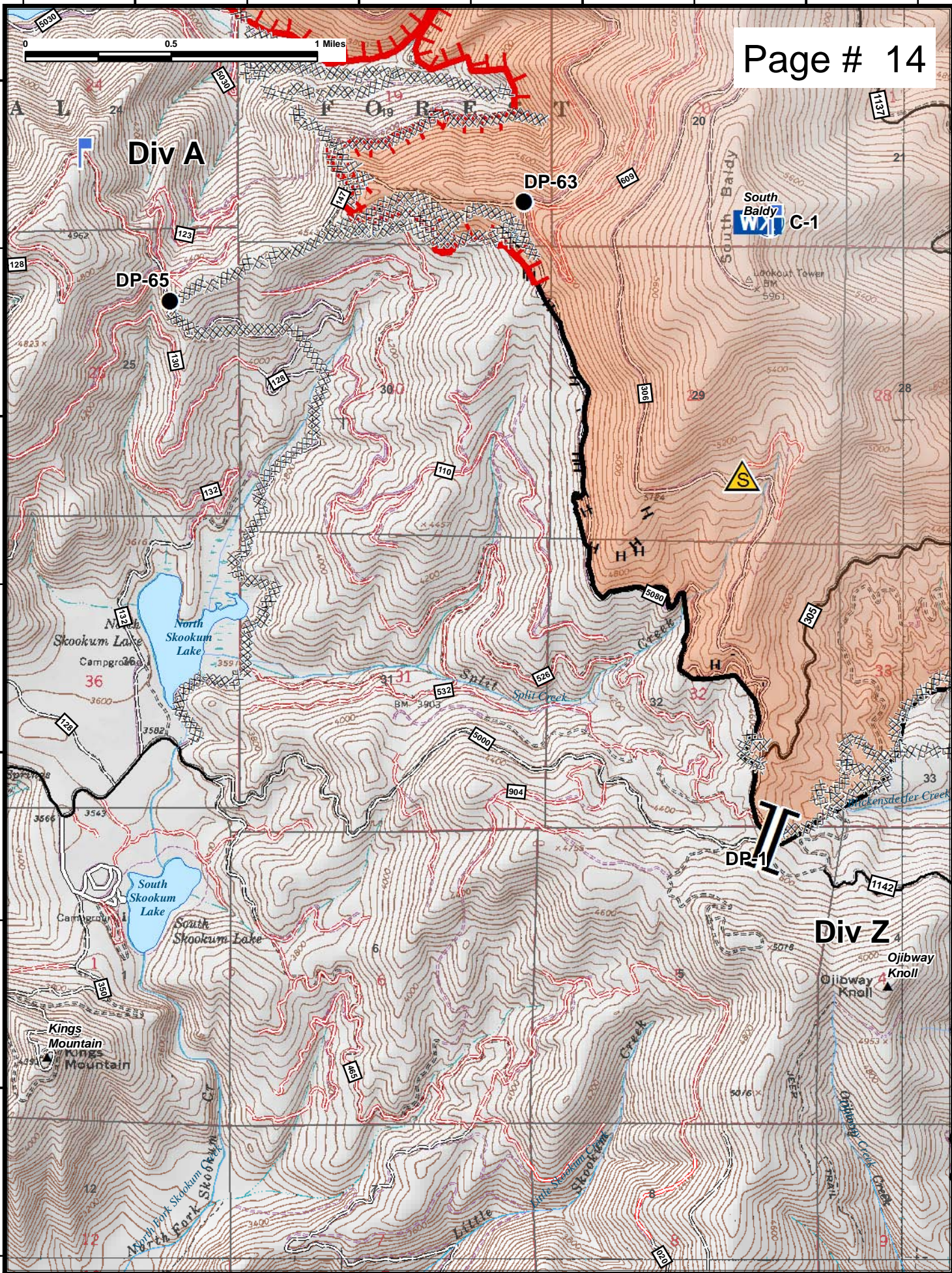
48°25'N

48°24'N

48°24'N

48°23'N

48°23'N



117°11'W

117°10'W

117°9'W

117°8'W

117°8'W

117°7'W

117°6'W

117°5'W

48°26'N

48°26'N

48°25'N

48°25'N

48°24'N

48°24'N

48°23'N

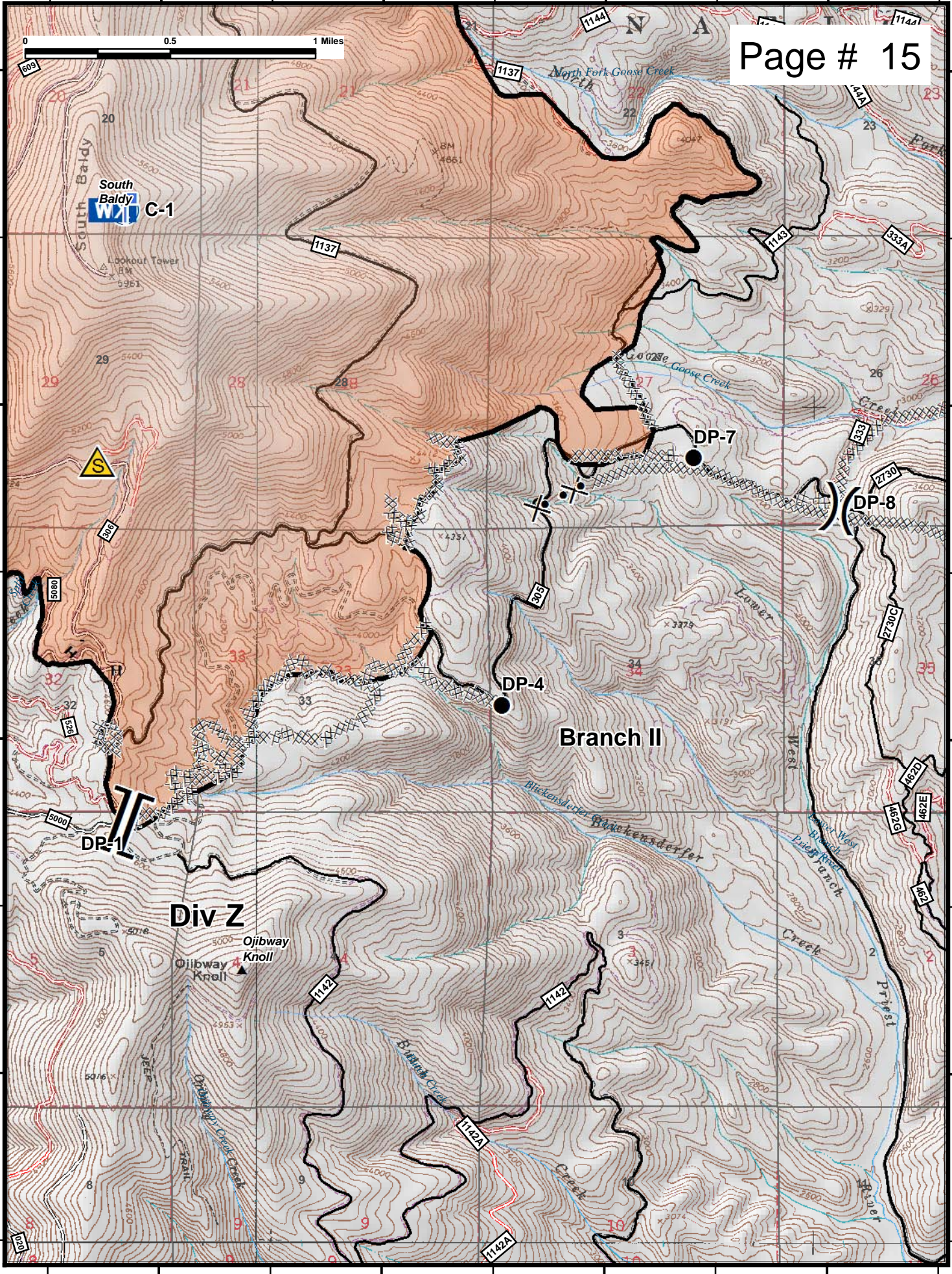
48°23'N

117°8'W

117°7'W

117°6'W

117°5'W



117°5'W

117°4'W

117°3'W

117°2'W

Div T

Branch I

48°26'N

48°26'N

48°25'N

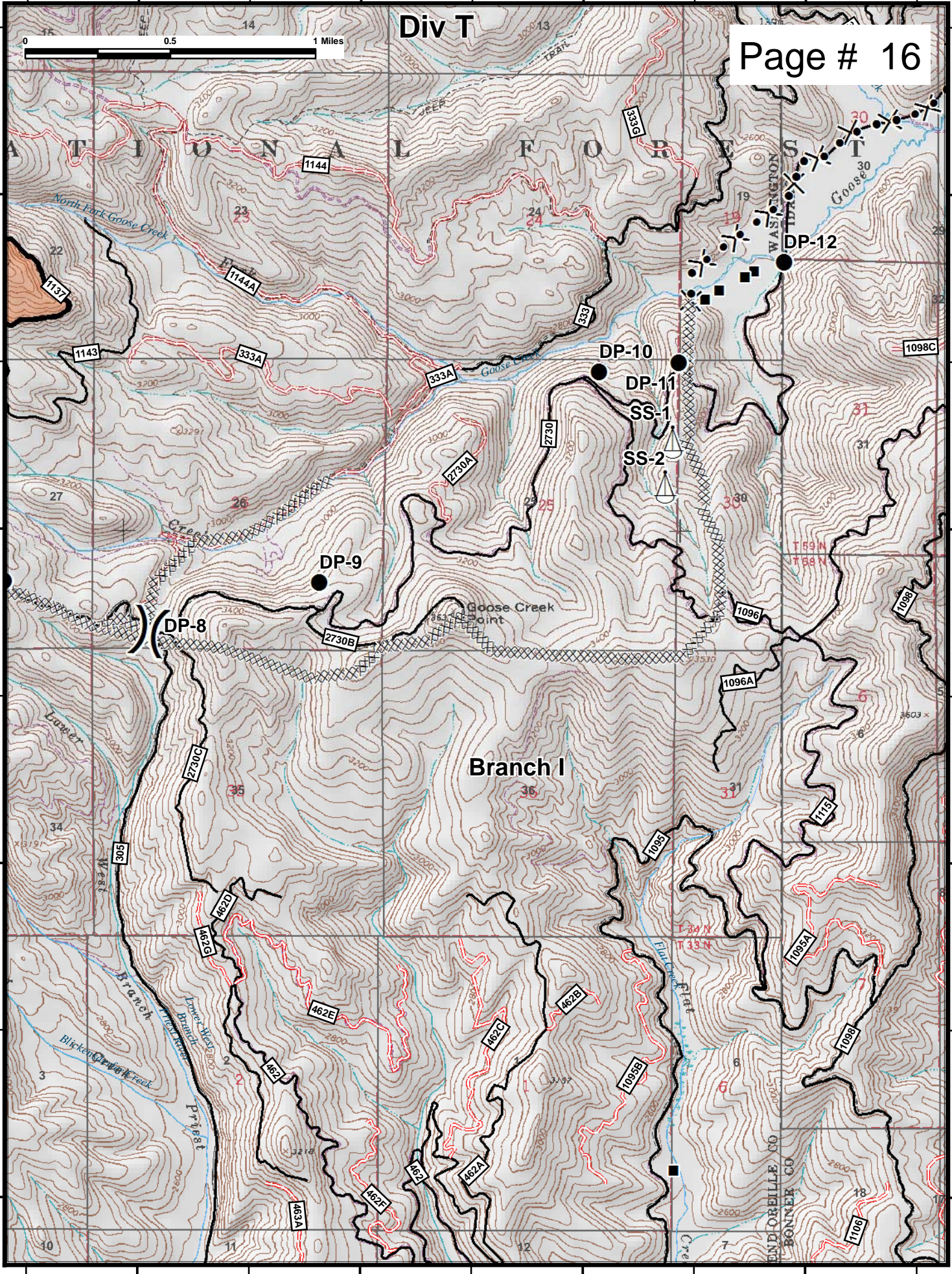
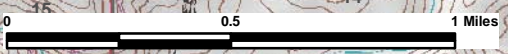
48°25'N

48°24'N

48°24'N

48°23'N

48°23'N



117°5'W

117°4'W

117°3'W

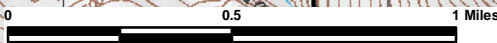
117°2'W

117°15'W

117°14'W

117°13'W

117°12'W



Page # 17

48°45'N

48°45'N

48°44'N

48°44'N

48°43'N

48°43'N

Div Onata

DP-101

DP-130

DP-120

DP-110

DP-150

Onata/Grease Staging

Branch III

Molybdenite

Mountain

117°15'W

117°14'W

117°13'W

117°12'W

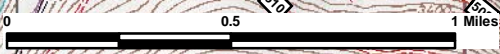
117°14'W

117°13'W

117°12'W

117°11'W

117°10'W



48°49'N

48°49'N

48°48'N

48°48'N

48°47'N

48°47'N

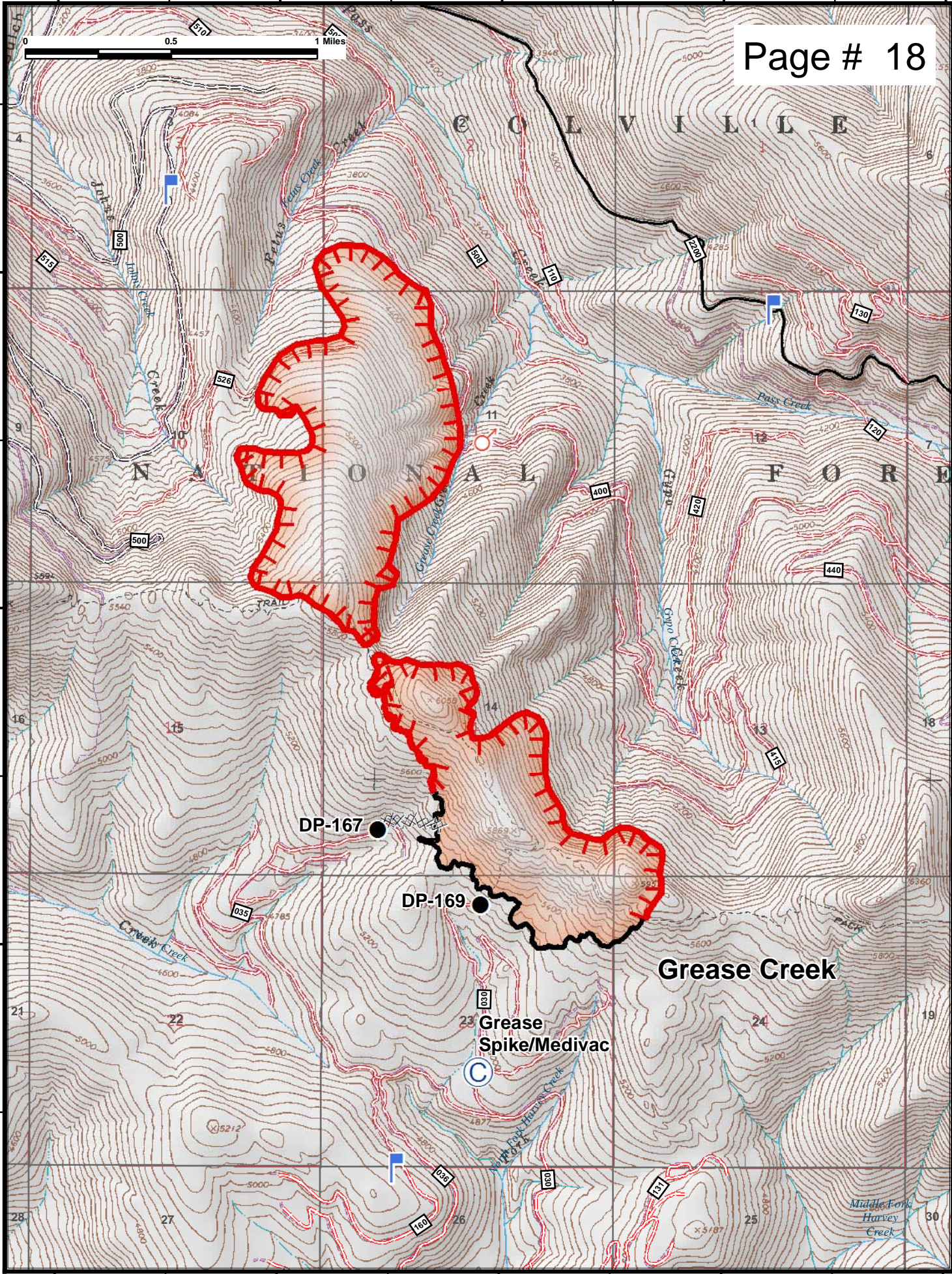
117°14'W

117°13'W

117°12'W

117°11'W

117°10'W



DP-167

DP-169

Grease Creek

Grease Spike/Medivac

C