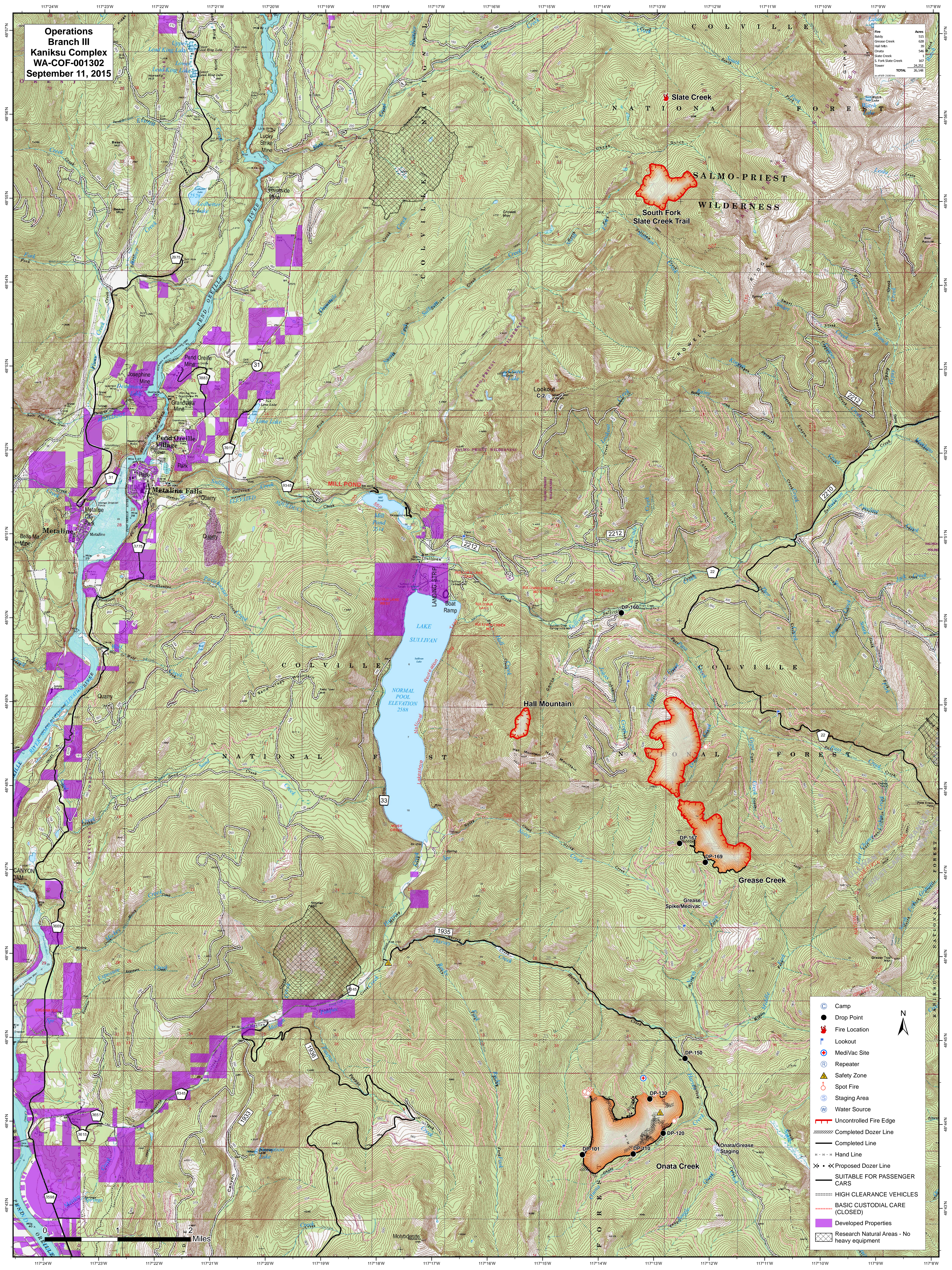


Operations
Branch III
Kaniksu Complex
WA-COF-001302
September 11, 2015

Feature	Acres
Fire	555
Baldy	628
Grease Creek	39
Hall Mtn	1
Onata	546
Slate Creek	1
S. Fork Slate Creek	167
Tower	24,252
TOTAL	28,148



	Camp		N
	Drop Point		
	Fire Location		
	Lookout		
	MediVac Site		
	Repeater		
	Safety Zone		
	Spot Fire		
	Staging Area		
	Water Source		
	Uncontrolled Fire Edge		
	Completed Dozer Line		
	Completed Line		
	Hand Line		
	Proposed Dozer Line		
	SUITABLE FOR PASSENGER CARS		
	HIGH CLEARANCE VEHICLES		
	BASIC CUSTODIAL CARE (CLOSED)		
	Developed Properties		
	Research Natural Areas - No heavy equipment		

0 1 2 Miles