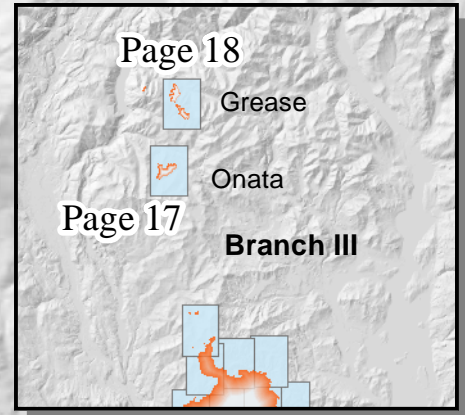
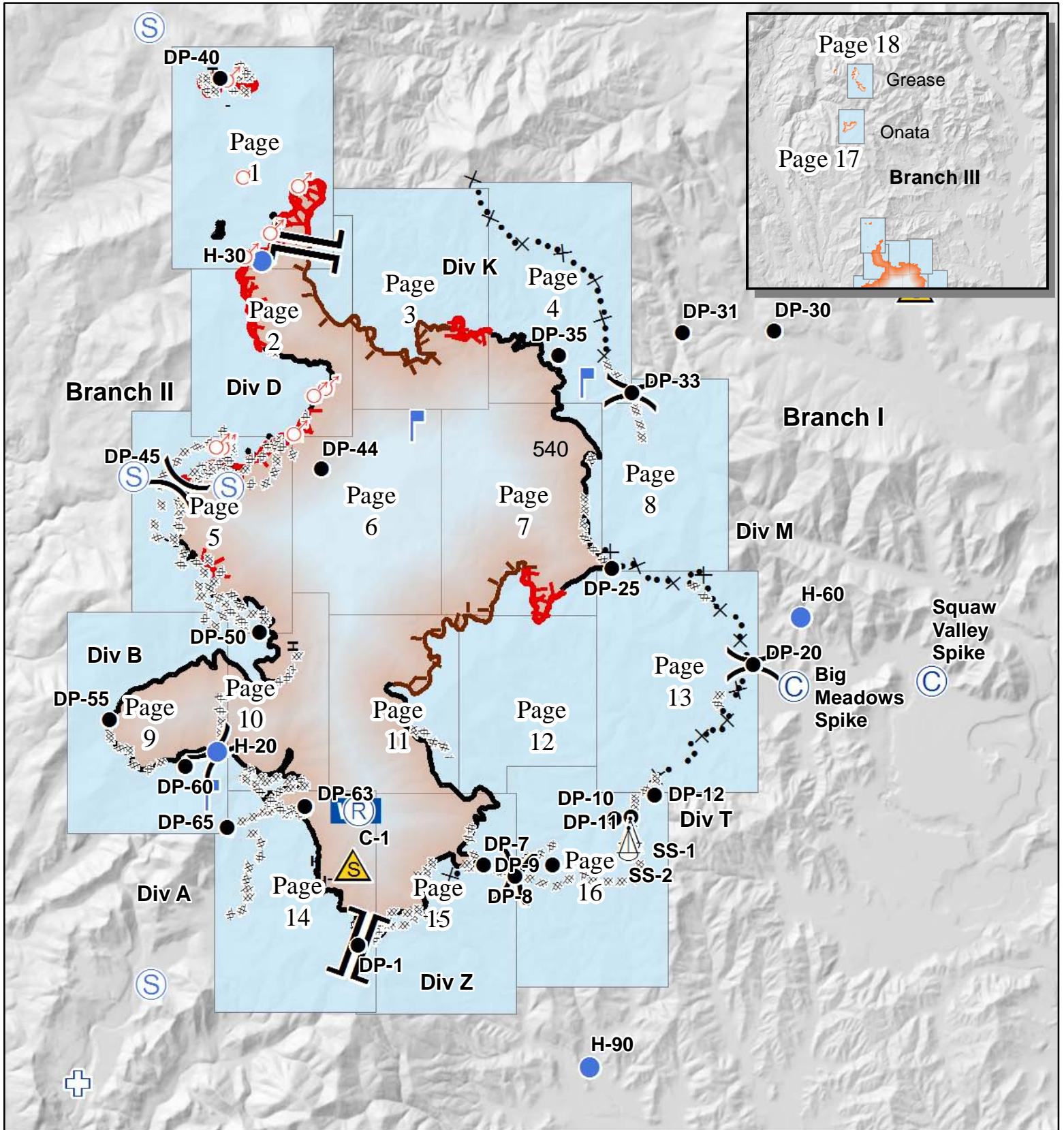


Kaniksu Complex WA-COF-001302 IAP Maps September 12, 2015

Fire	Acres
Baldy	515
Grease Creek	629
Hall Mtn	39
Onata	546
Slate Creek	1
S. Fork Slate Creek	167
Tower	24,301
TOTAL	26,198

as of 9/10 2100 hrs

	Sling Site		Safety Zone		Completed Dozer Line
	Camp		Spot Fire		Hand Line
	Drop Point		Staging Area		Proposed Dozer Line
	Lookout		First Aid Station		Limited Action Line - Minimal
					Uncontrolled Fire Edge
					Open
					Closed

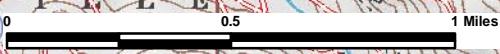


117°12'W

117°11'W

117°10'W

117°9'W



48°36'N

48°36'N

48°35'N

48°35'N

48°34'N

48°34'N

48°33'N

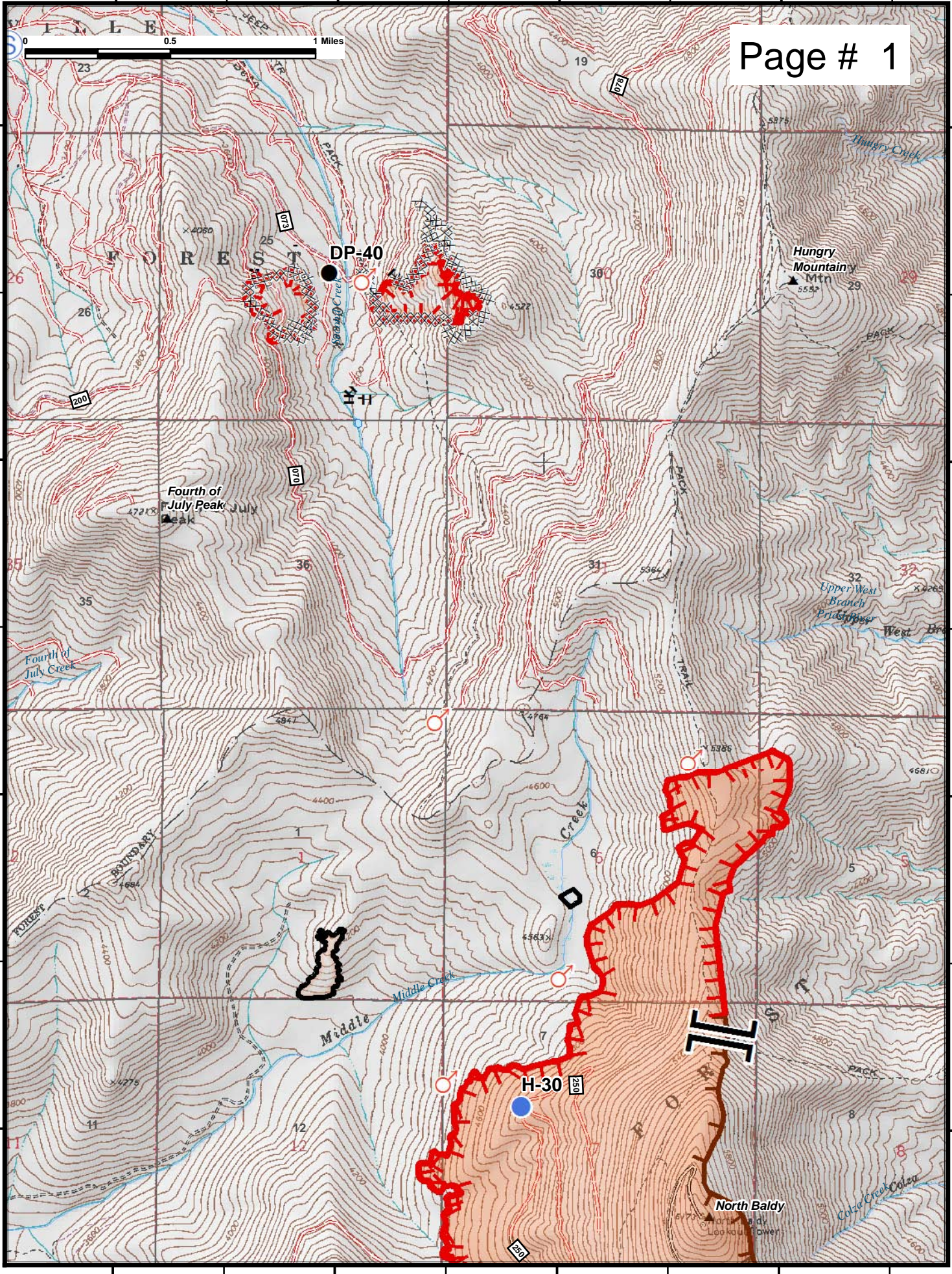
48°33'N

117°12'W

117°11'W

117°10'W

117°9'W



DP-40

H-30

Hungry Mountain Mtn

Fourth of July Peak

North Baldy

FOREST

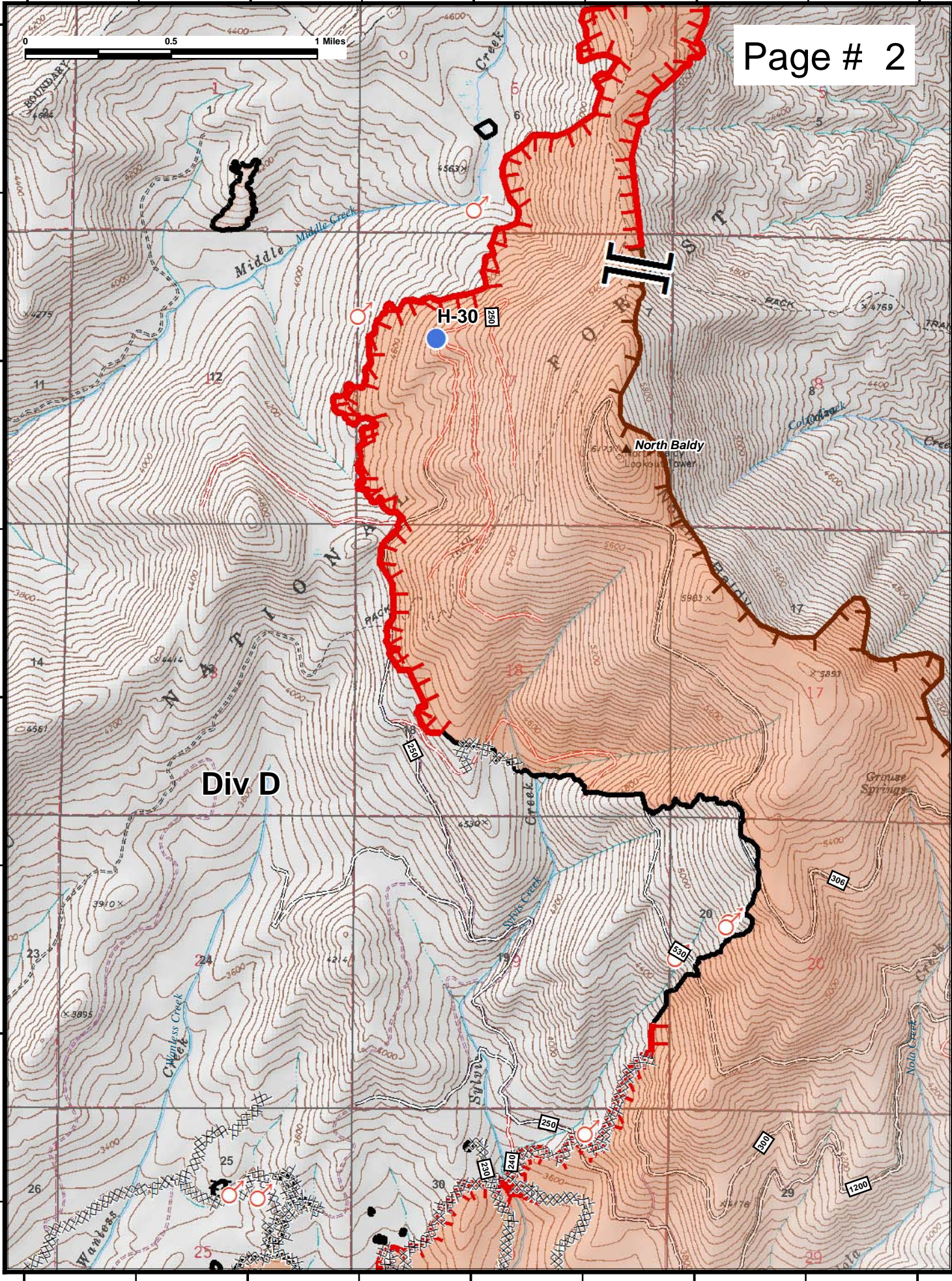
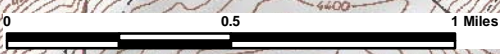
FOREST

Middle Creek

Upper West Branch

Colza Creek

MILE



Div D

H-30

North Baldy

Middle Middle Creek

Sugar Creek

Grimes Springs

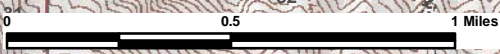
Nala Creek

117°9'W

117°8'W

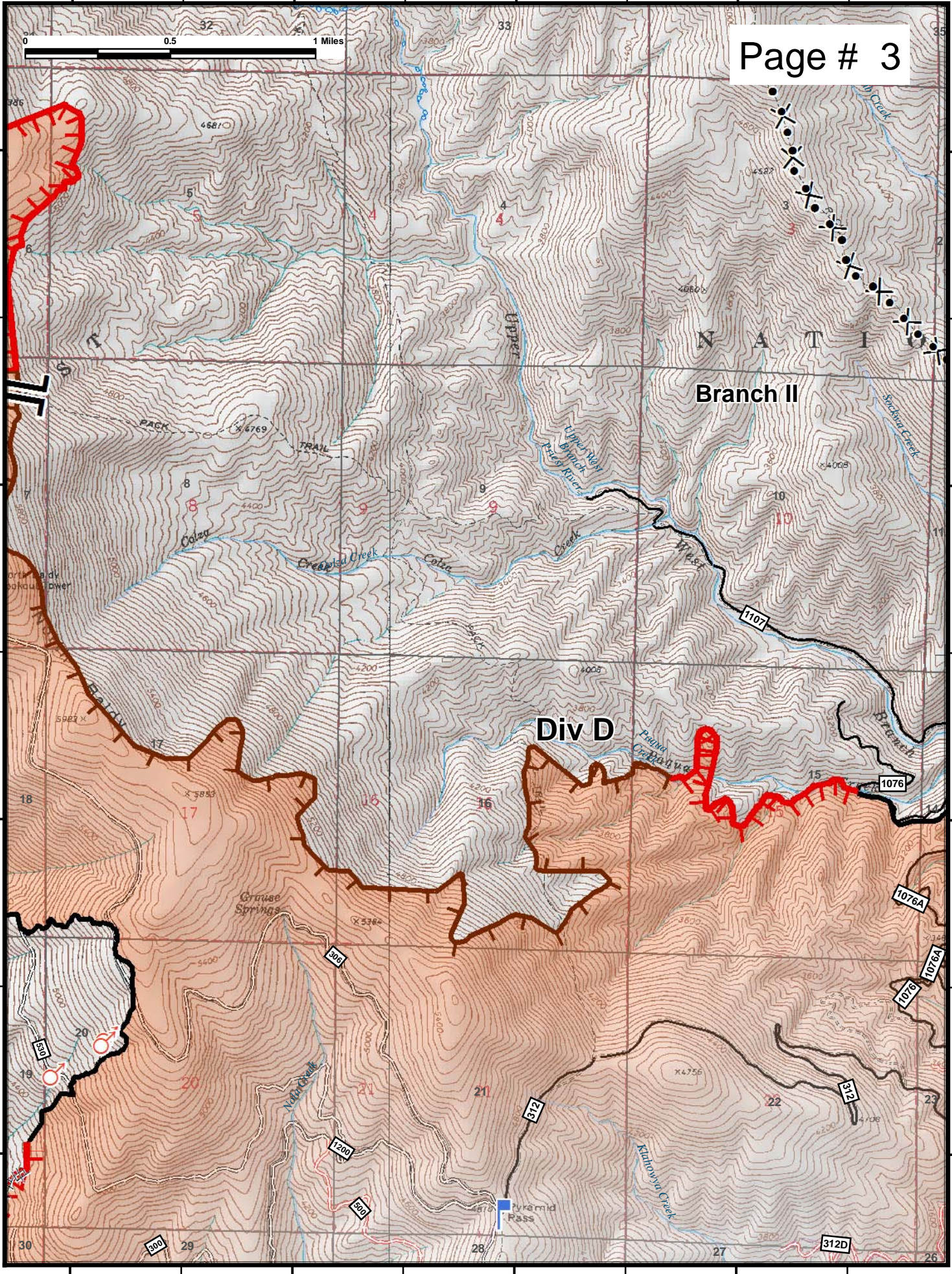
117°7'W

117°6'W



48°34'N
48°33'N
48°32'N
48°31'N

48°34'N
48°33'N
48°32'N
48°31'N



Branch II

Div D

N A T I

Grass Springs

Pyramid Pass

PACK

TRAIL

Colar

Colar

Upper New Branch

Soda Run

Pyramid Pass

Kahovya Creek

Soda Run Creek

Pyramid Pass

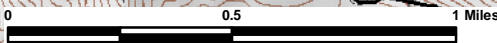
Kahovya Creek

117°6'W

117°5'W

117°4'W

117°3'W



Page # 4

48°34'N

48°34'N

Branch II

Branch I

48°33'N

48°33'N

Div K

48°32'N

48°32'N

DP-35

DP-33

48°31'N

48°31'N

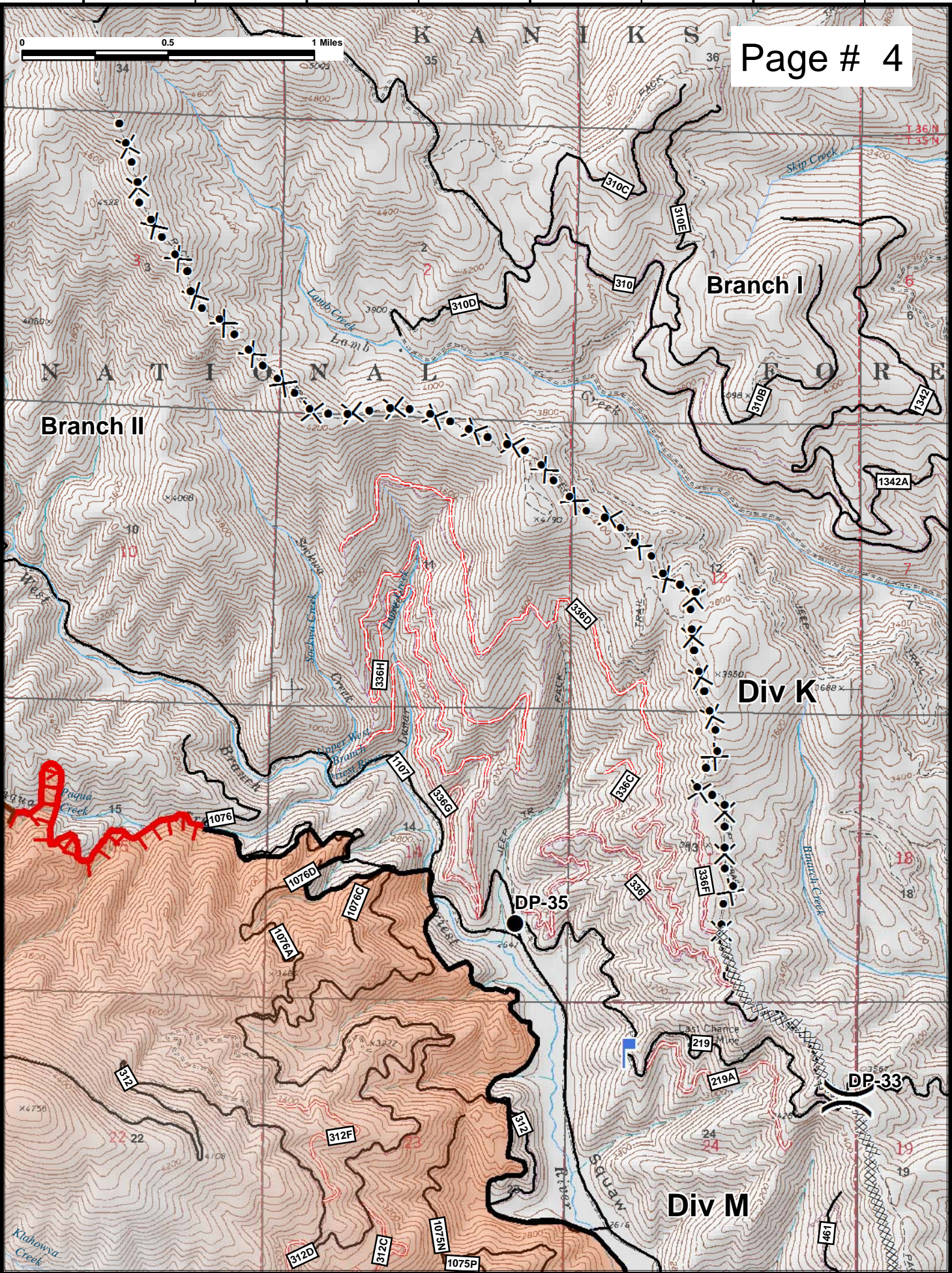
Div M

117°6'W

117°5'W

117°4'W

117°3'W



117°13'W

117°12'W

117°11'W

117°10'W

Page # 5

48°31'N

48°31'N

48°30'N

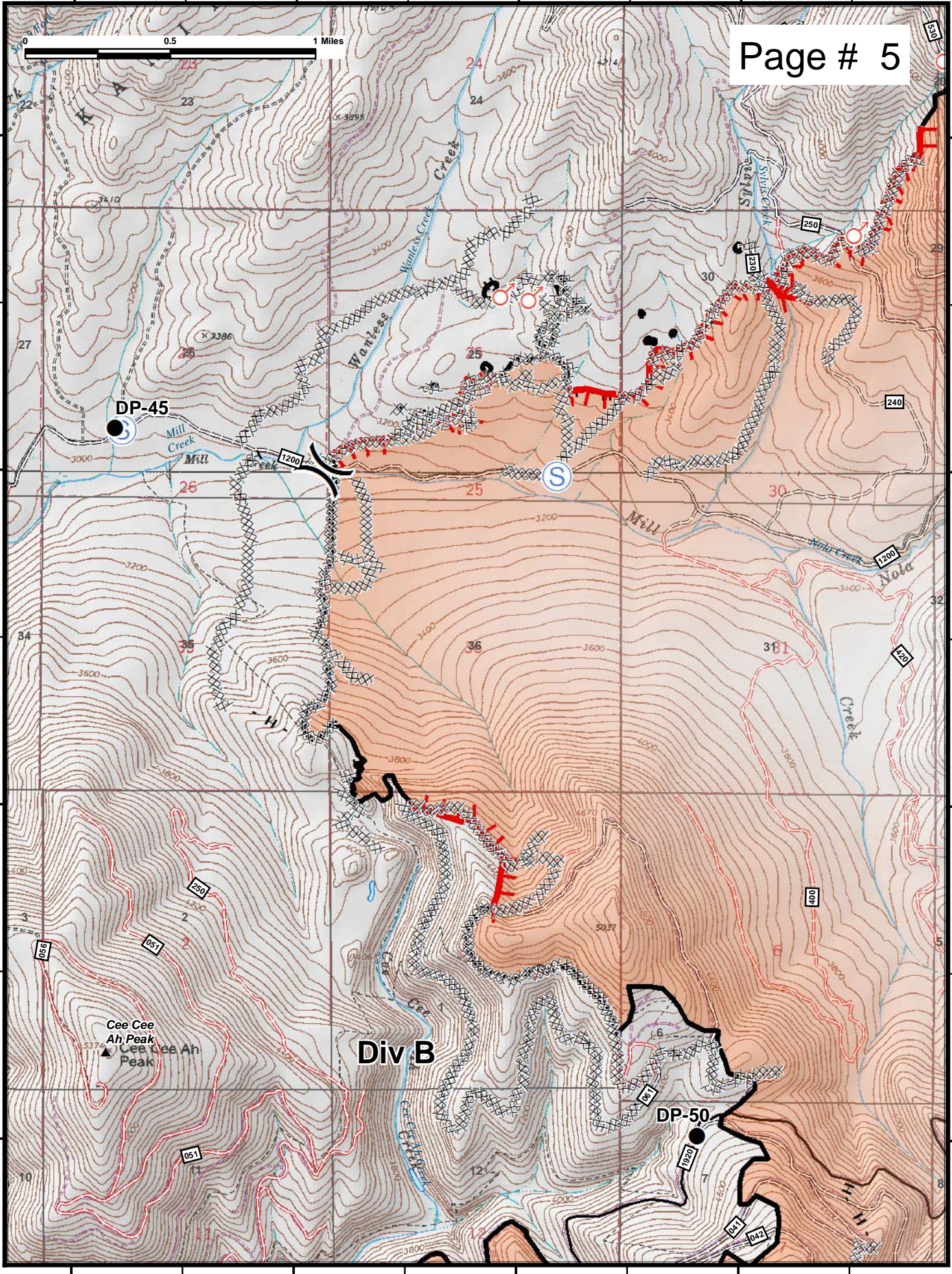
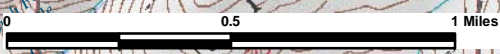
48°30'N

48°29'N

48°29'N

48°28'N

48°28'N

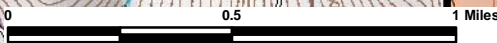


DP-45

DP-50

Div B

Cee Cee
Ah Peak
▲ Cee Lee Ah
Peak



48°31'N

48°31'N

48°30'N

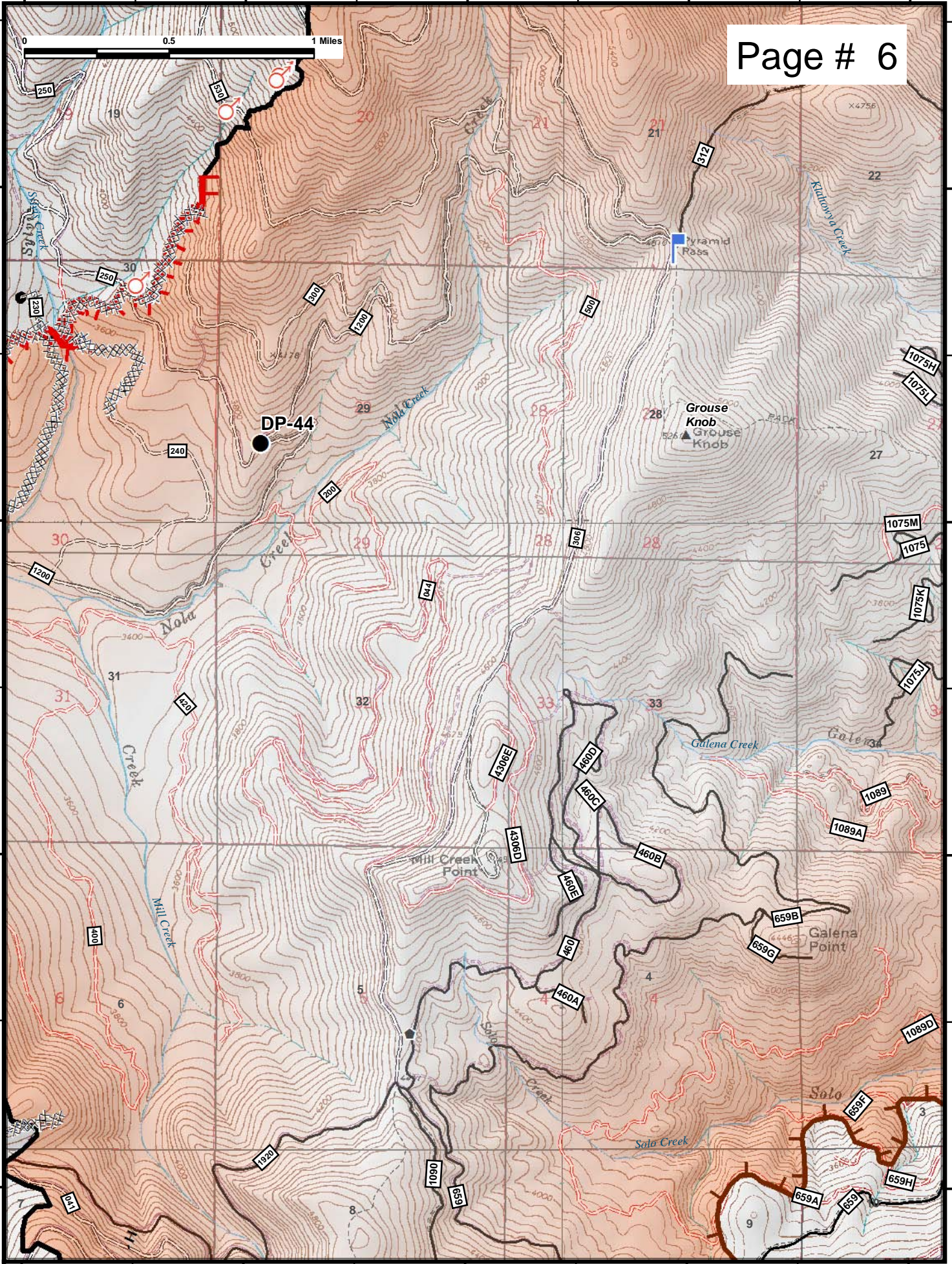
48°30'N

48°29'N

48°29'N

48°28'N

48°28'N



117°6'W

117°5'W

117°4'W

117°3'W

0 0.5 1 Miles

Page # 7

Div M

DP-25

48°31'N

48°31'N

48°30'N

48°30'N

48°29'N

48°29'N

48°28'N

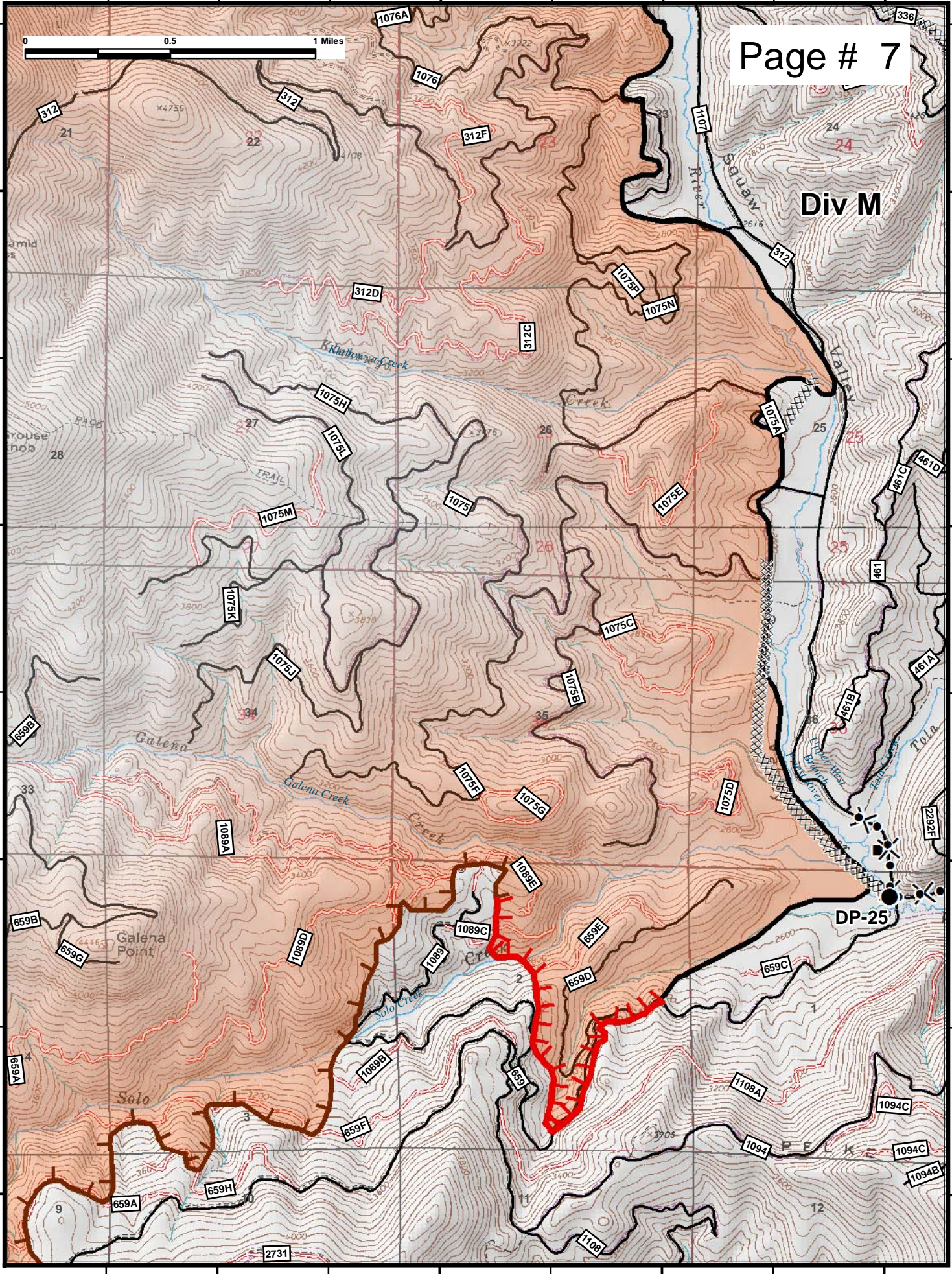
48°28'N

117°6'W

117°5'W

117°4'W

117°3'W



117°4'W

117°3'W

117°2'W

117°1'W

Page # 8

48°31'N

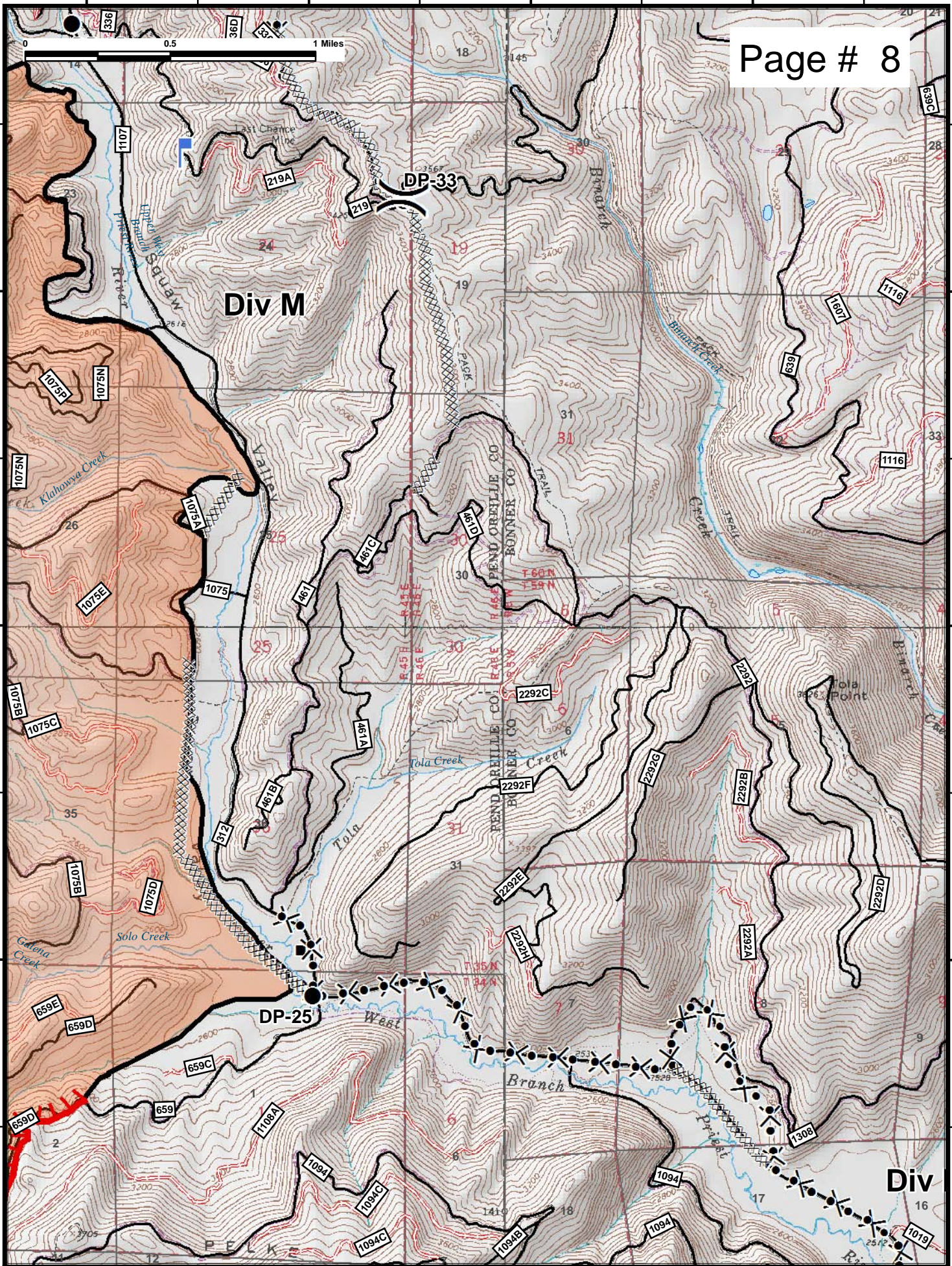
48°31'N

48°30'N

48°30'N

48°29'N

48°29'N



117°4'W

117°3'W

117°2'W

117°1'W

Div M

Div

DP-25

DP-33

117°14'W

117°13'W

117°12'W

117°11'W

48°28'N

48°28'N

48°27'N

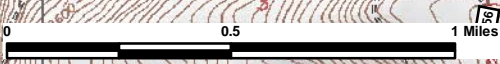
48°27'N

48°26'N

48°26'N

48°25'N

48°25'N



Cee Cee
Ah Peak
▲ Cee Cee Ah
Peak

Div B

DP-55

DP-60

H-20

Div A

DP-65

117°14'W

117°13'W

117°12'W

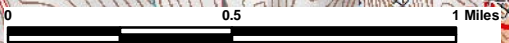
117°11'W

117°12'W

117°11'W

117°10'W

117°9'W



48°28'N

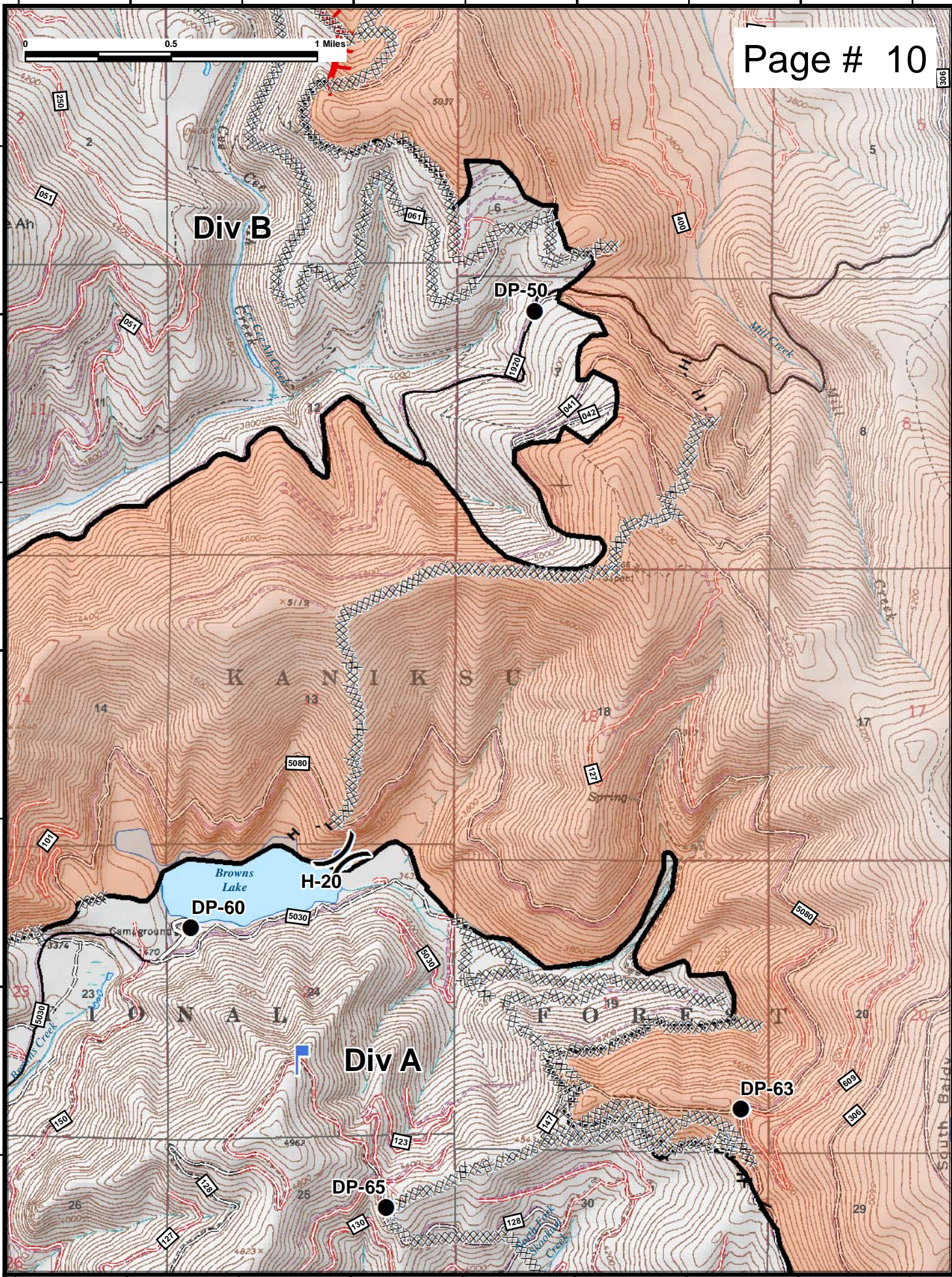
48°28'N

48°27'N

48°27'N

48°26'N

48°26'N



117°12'W

117°11'W

117°10'W

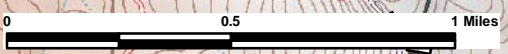
117°9'W

117°9'W

117°8'W

117°7'W

117°6'W



48°28'N

48°28'N

48°27'N

48°27'N

48°26'N

48°26'N

48°25'N

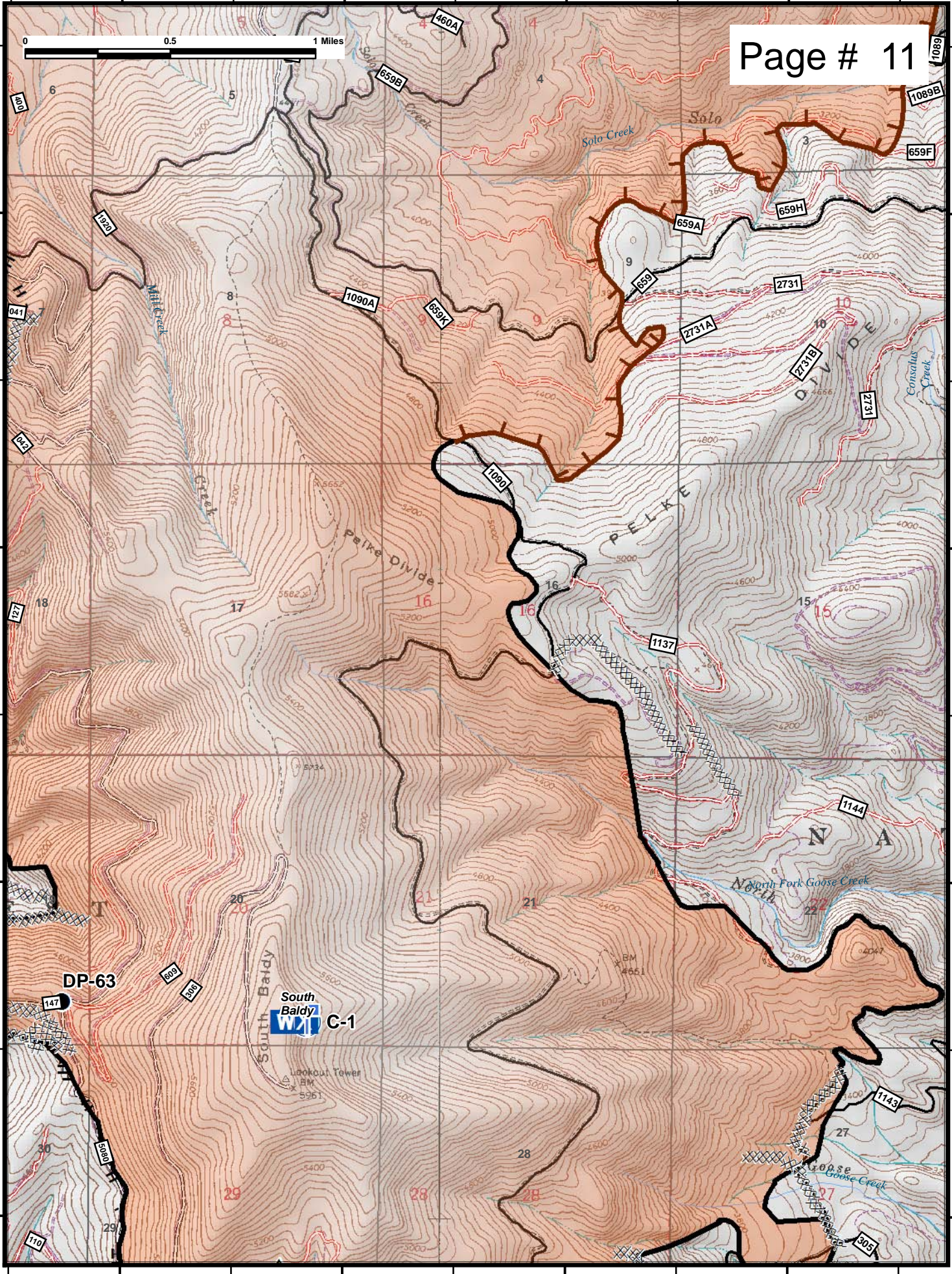
48°25'N

117°9'W

117°8'W

117°7'W

117°6'W

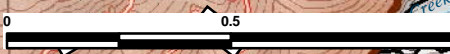


117°6'W

117°5'W

117°4'W

117°3'W



48°28'N

48°28'N

48°27'N

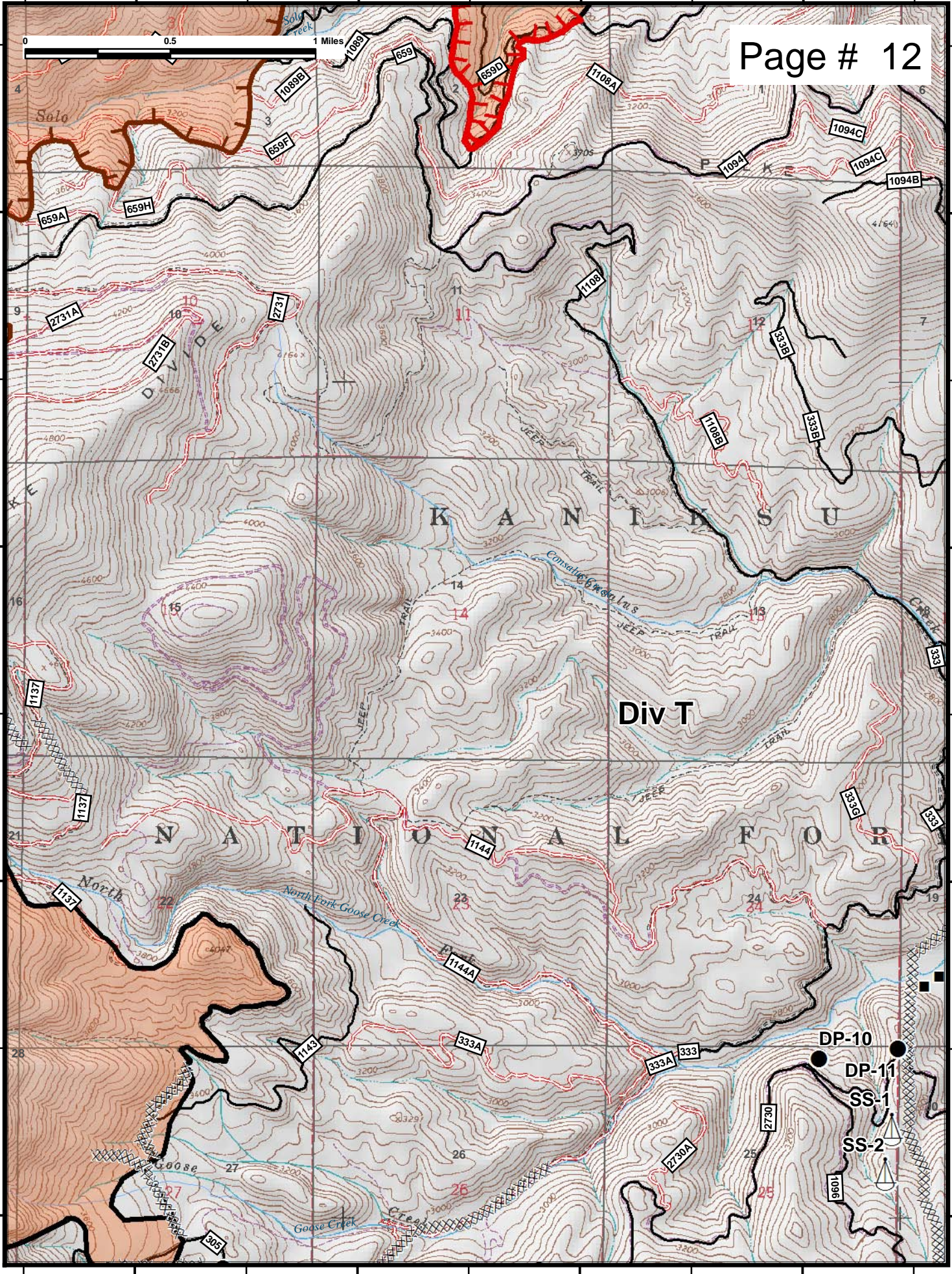
48°27'N

48°26'N

48°26'N

48°25'N

48°25'N



117°6'W

117°5'W

117°4'W

117°3'W

117°3'W

117°2'W

117°1'W

117°0'W

48°29'N

48°29'N

Page # 13

48°28'N

48°28'N

48°27'N

48°27'N

48°26'N

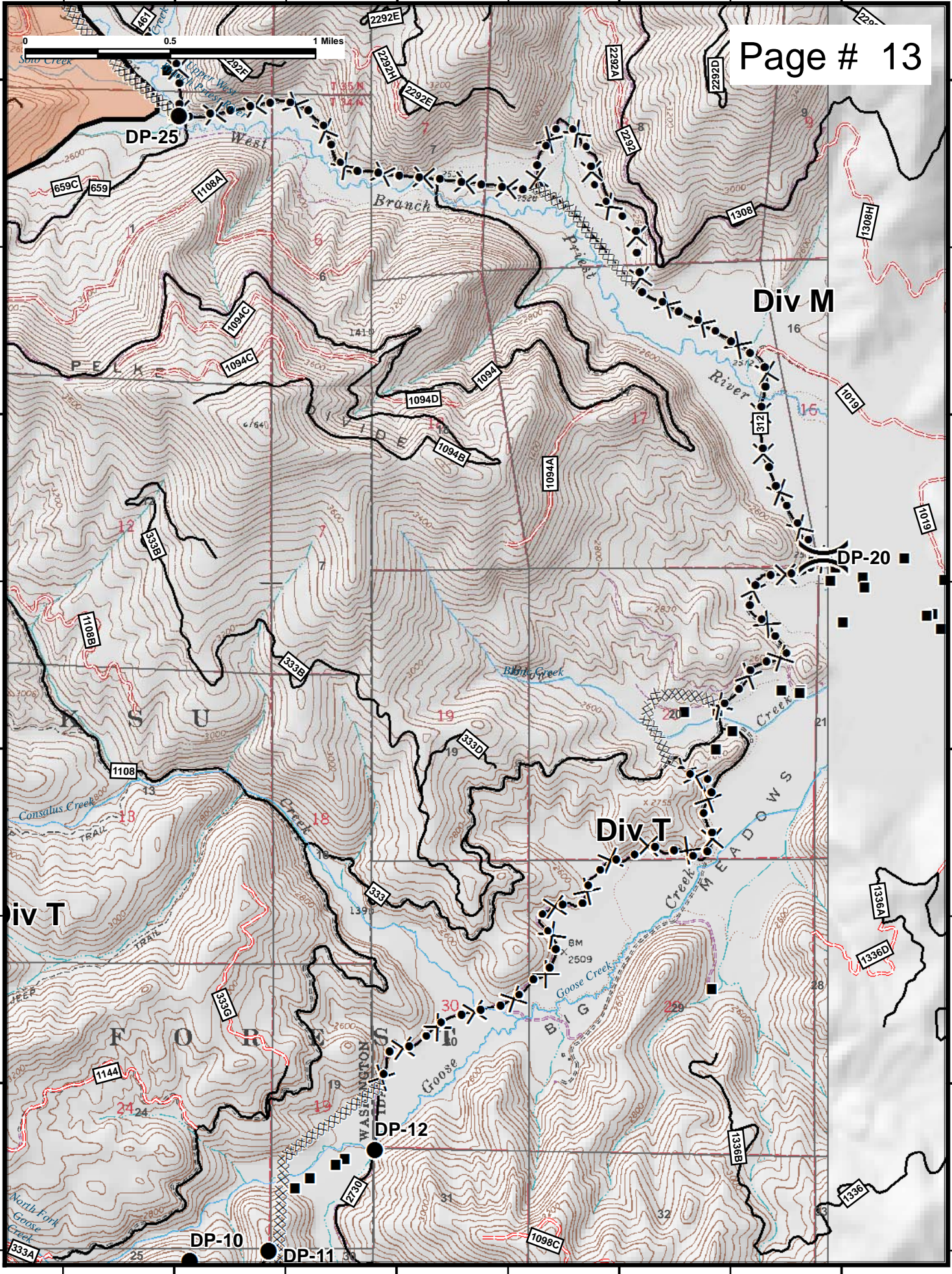
48°26'N

117°3'W

117°2'W

117°1'W

117°0'W



117°11'W

117°10'W

117°9'W

117°8'W

48°26'N

48°26'N

48°25'N

48°25'N

48°24'N

48°24'N

48°23'N

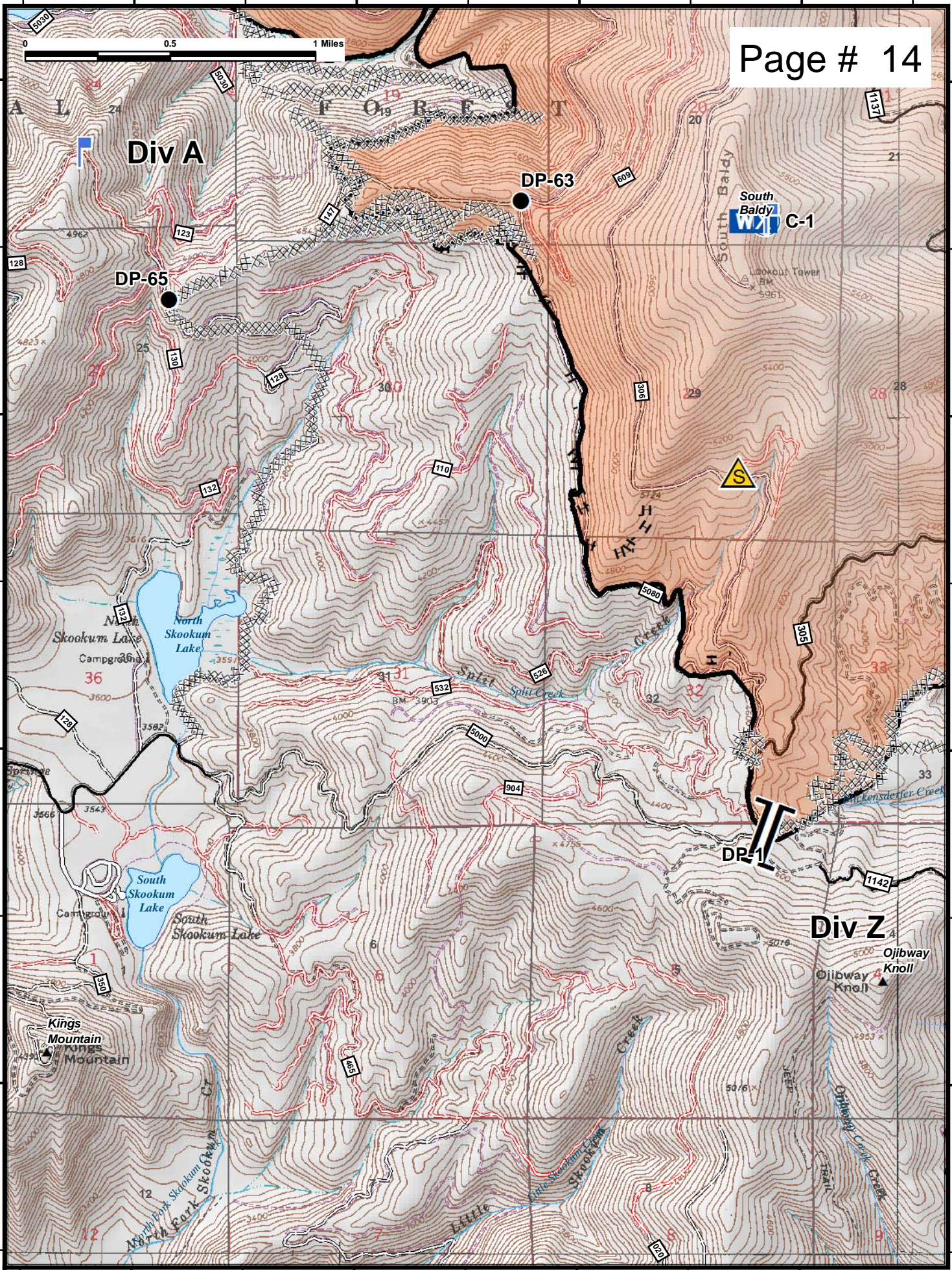
48°23'N

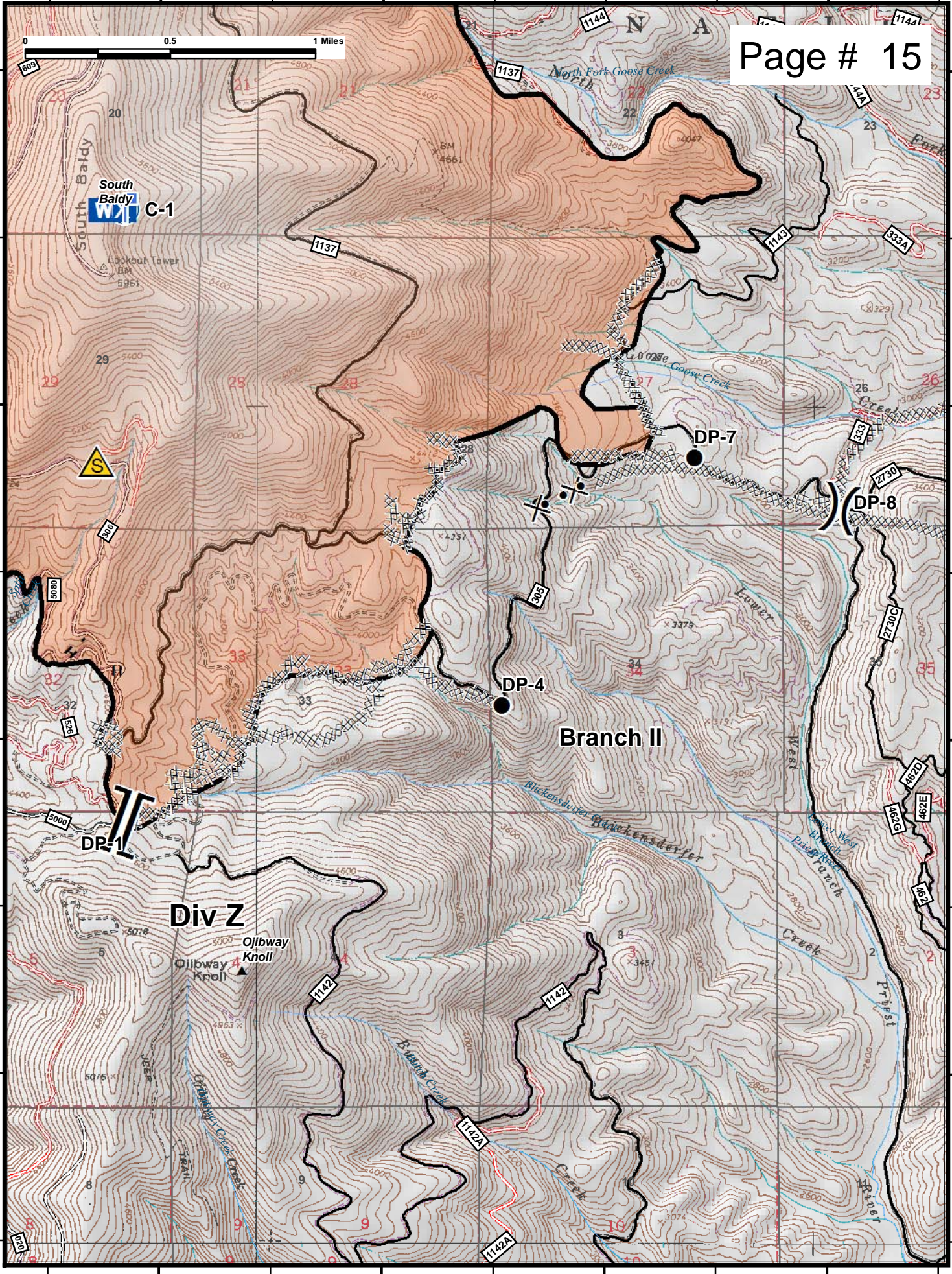
117°11'W

117°10'W

117°9'W

117°8'W



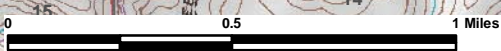


117°5'W

117°4'W

117°3'W

117°2'W



Page # 16

Div T

Branch I

48°26'N

48°26'N

48°25'N

48°25'N

48°24'N

48°24'N

48°23'N

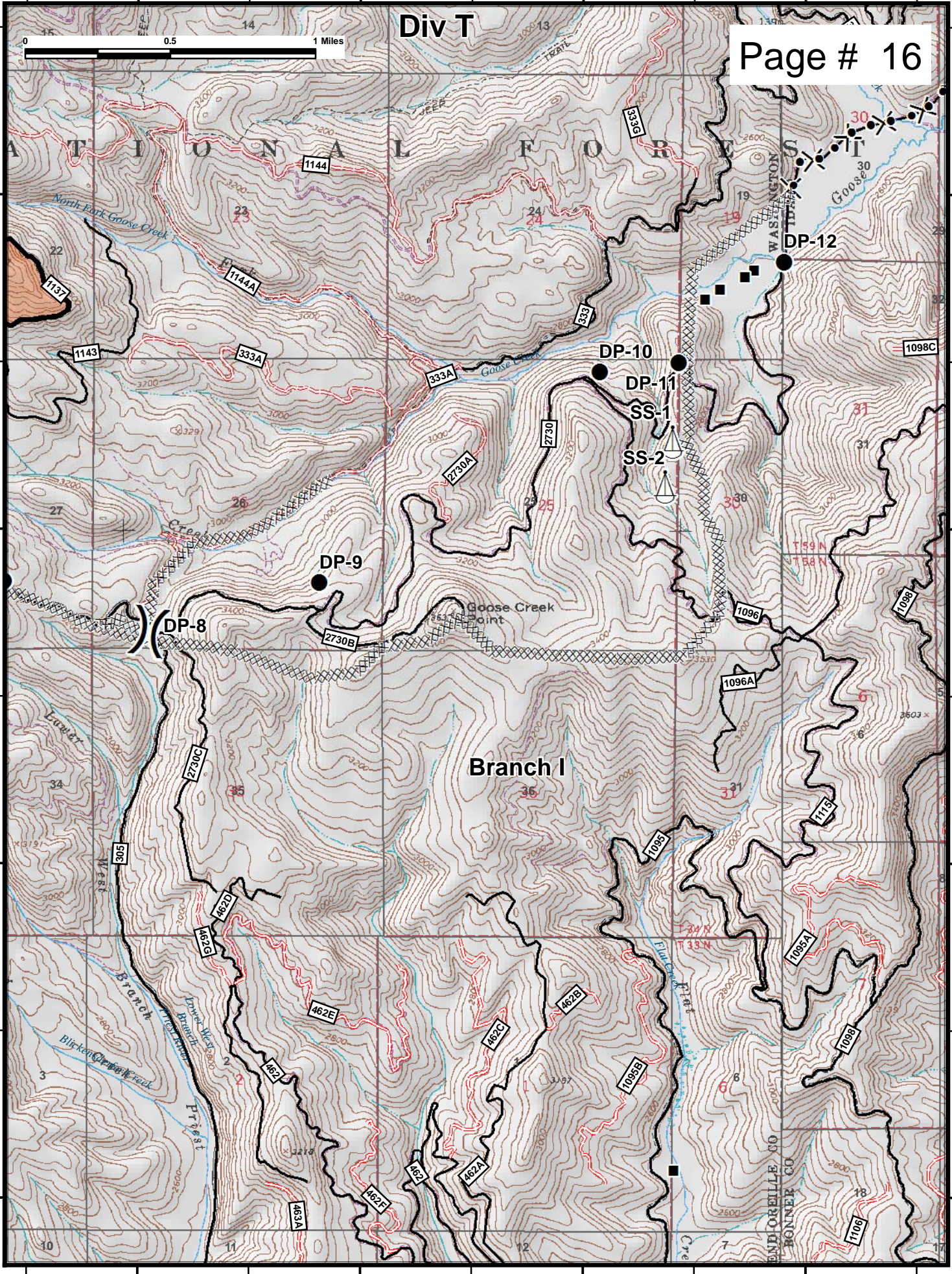
48°23'N

117°5'W

117°4'W

117°3'W

117°2'W

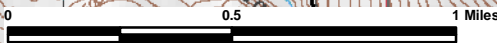


117°15'W

117°14'W

117°13'W

117°12'W



Page # 17

48°45'N

48°45'N

48°44'N

48°44'N

48°43'N

48°43'N

Div Onata

DP-101

DP-130

DP-120

DP-110

Onata/Grease Staging

Branch III

Molybdenite

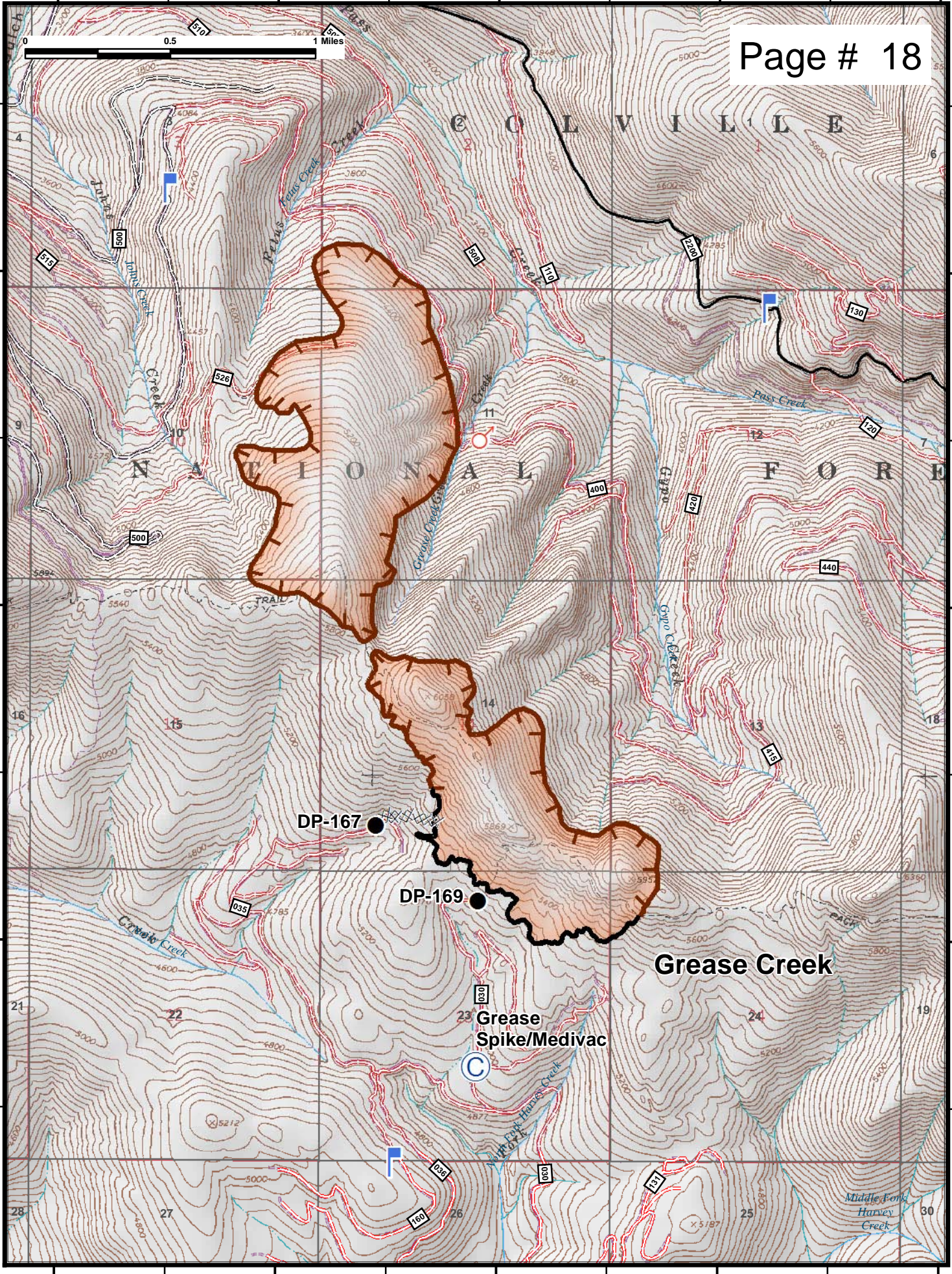
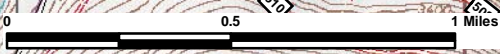
Mountain

117°15'W

117°14'W

117°13'W

117°12'W



DP-167

DP-169

Grease Creek

Grease Spike/Medivac