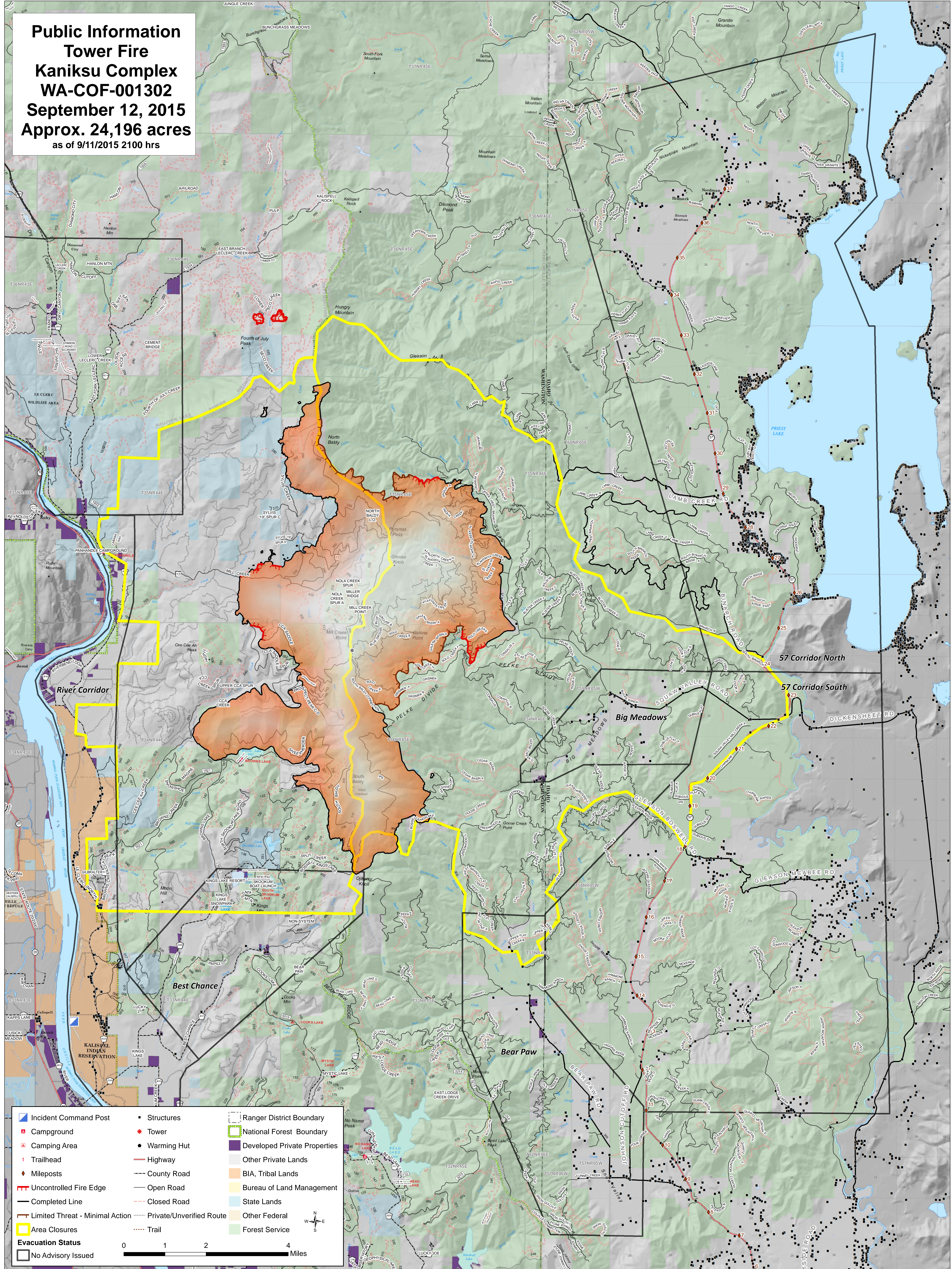


**Public Information  
Tower Fire  
Kaniksu Complex  
WA-COF-001302  
September 12, 2015  
Approx. 24,196 acres  
as of 9/11/2015 2100 hrs**



Incident Command Post	Structures	Ranger District Boundary
Campground	Tower	National Forest Boundary
Camping Area	Warming Hut	Developed Private Properties
Trailhead	Highway	Other Private Lands
Mileposts	County Road	BIA, Tribal Lands
Uncontrolled Fire Edge	Open Road	Bureau of Land Management
Completed Line	Closed Road	State Lands
Limited Threat - Minimal Action	Private/Unverified Route	Other Federal
Area Closures	Trail	Forest Service
Evacuation Status		
No Advisory Issued		

0 1 2 4 Miles