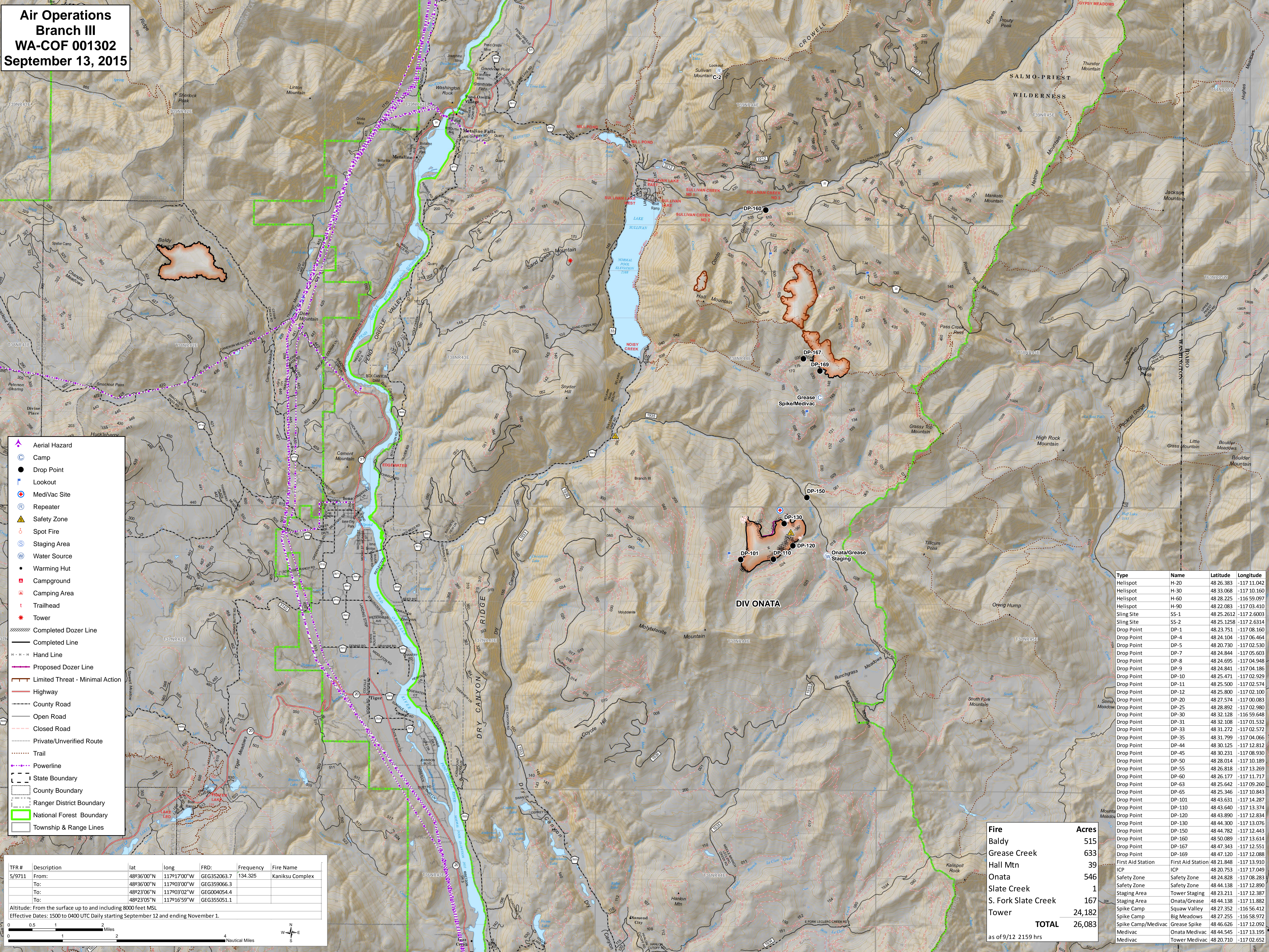


**Air Operations
Branch III
WA-COF 001302
September 13, 2015**

- Aerial Hazard
- Camp
- Drop Point
- Lookout
- MediVac Site
- Repeater
- Safety Zone
- Spot Fire
- Staging Area
- Water Source
- Warming Hut
- Campground
- Camping Area
- Trailhead
- Tower
- Completed Dozer Line
- Completed Line
- Hand Line
- Proposed Dozer Line
- Limited Threat - Minimal Action
- Highway
- County Road
- Open Road
- Closed Road
- Private/Unverified Route
- Trail
- Powerline
- State Boundary
- County Boundary
- Ranger District Boundary
- National Forest Boundary
- Township & Range Lines

TFR #	Description	lat	long	FRD:	Frequency	Fire Name
5/9711	From:	48°36'00"N	117°17'00"W	GEG352063.7	134.325	Kaniksu Complex
	To:	48°36'00"N	117°03'00"W	GEG359066.3		
	To:	48°23'06"N	117°03'02"W	GEG004054.4		
	To:	48°23'05"N	117°16'59"W	GEG355051.1		

Altitude: From the surface up to and including 8000 feet MSL
 Effective Dates: 1500 to 0400 UTC Daily starting September 12 and ending November 1.



Type	Name	Latitude	Longitude
Helispot	H-20	48 26.383	-117 11.042
Helispot	H-30	48 33.068	-117 10.160
Helispot	H-60	48 28.225	-116 59.097
Helispot	H-90	48 22.083	-117 03.410
Sling Site	SS-1	48 25.2612	-117 2.6003
Sling Site	SS-2	48 25.1258	-117 2.6314
Drop Point	DP-1	48 23.751	-117 08.160
Drop Point	DP-4	48 24.104	-117 06.464
Drop Point	DP-5	48 20.730	-117 02.530
Drop Point	DP-7	48 24.844	-117 05.603
Drop Point	DP-8	48 24.695	-117 04.948
Drop Point	DP-9	48 24.841	-117 04.186
Drop Point	DP-10	48 25.471	-117 02.929
Drop Point	DP-11	48 25.500	-117 02.574
Drop Point	DP-12	48 25.800	-117 02.100
Drop Point	DP-20	48 27.574	-117 00.083
Drop Point	DP-25	48 28.892	-117 02.980
Drop Point	DP-30	48 32.128	-116 59.648
Drop Point	DP-31	48 32.108	-117 01.532
Drop Point	DP-33	48 31.272	-117 02.572
Drop Point	DP-35	48 31.799	-117 04.066
Drop Point	DP-44	48 30.125	-117 12.812
Drop Point	DP-45	48 30.231	-117 08.930
Drop Point	DP-50	48 28.014	-117 10.189
Drop Point	DP-55	48 26.818	-117 13.269
Drop Point	DP-60	48 26.177	-117 11.717
Drop Point	DP-63	48 25.642	-117 09.260
Drop Point	DP-65	48 25.346	-117 10.843
Drop Point	DP-101	48 43.631	-117 14.287
Drop Point	DP-110	48 43.640	-117 13.374
Drop Point	DP-120	48 43.890	-117 12.834
Drop Point	DP-130	48 44.300	-117 13.076
Drop Point	DP-150	48 44.782	-117 12.443
Drop Point	DP-160	48 50.089	-117 13.614
Drop Point	DP-167	48 47.343	-117 12.551
Drop Point	DP-169	48 47.120	-117 12.088
First Aid Station	First Aid Station	48 21.848	-117 13.910
ICP	ICP	48 20.753	-117 17.049
Safety Zone	Safety Zone	48 24.828	-117 08.283
Safety Zone	Safety Zone	48 44.138	-117 12.890
Tower Staging	Tower Staging	48 23.211	-117 12.387
Staging Area	Onata/Grease	48 44.138	-117 11.882
Spike Camp	Squaw Valley	48 27.352	-116 56.412
Spike Camp	Big Meadows	48 27.255	-116 58.972
Spike Camp/MediVac	Grease Spike	48 46.626	-117 12.092
MediVac	Onata MediVac	48 44.545	-117 13.195
MediVac	Tower MediVac	48 20.710	-117 02.652

Fire	Acres
Baldy	515
Grease Creek	633
Hall Mtn	39
Onata	546
Slate Creek	1
S. Fork Slate Creek	167
Tower	24,182
TOTAL	26,083

as of 9/12 2159 hrs