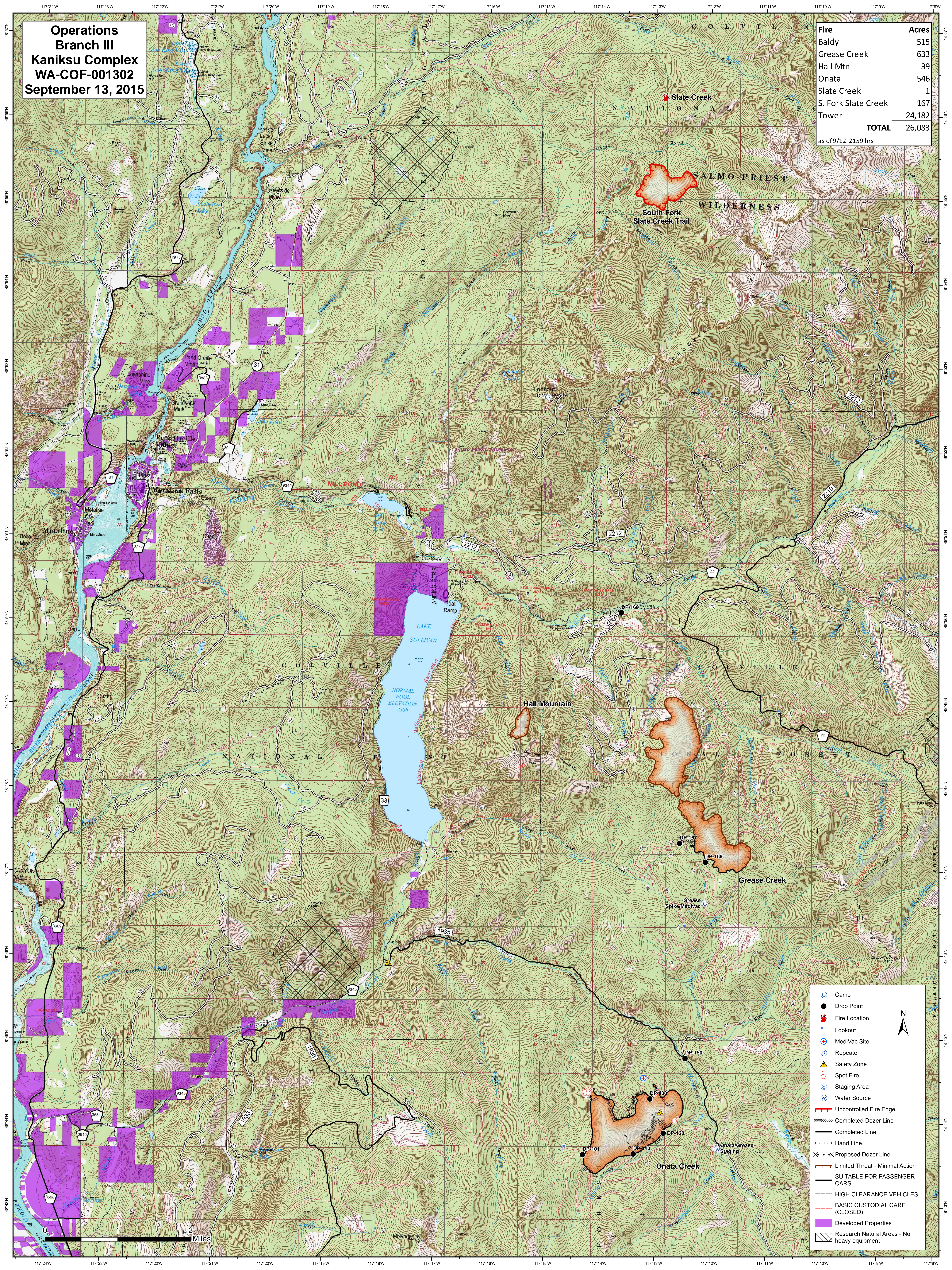


**Operations
Branch III
Kaniksu Complex
WA-COF-001302
September 13, 2015**

| Fire | Acres |
|---------------------|---------------|
| Baldy | 515 |
| Grease Creek | 633 |
| Hall Mtn | 39 |
| Onata | 546 |
| Slate Creek | 1 |
| S. Fork Slate Creek | 167 |
| Tower | 24,182 |
| TOTAL | 26,083 |

as of 9/12 2159 hrs



| | |
|--|---|
| | Camp |
| | Drop Point |
| | Fire Location |
| | Lookout |
| | MediVac Site |
| | Repeater |
| | Safety Zone |
| | Spot Fire |
| | Staging Area |
| | Water Source |
| | Uncontrolled Fire Edge |
| | Completed Dozer Line |
| | Completed Line |
| | Hand Line |
| | Proposed Dozer Line |
| | Limited Threat - Minimal Action |
| | SUITABLE FOR PASSENGER CARS |
| | HIGH CLEARANCE VEHICLES |
| | BASIC CUSTODIAL CARE (CLOSED) |
| | Developed Properties |
| | Research Natural Areas - No heavy equipment |

