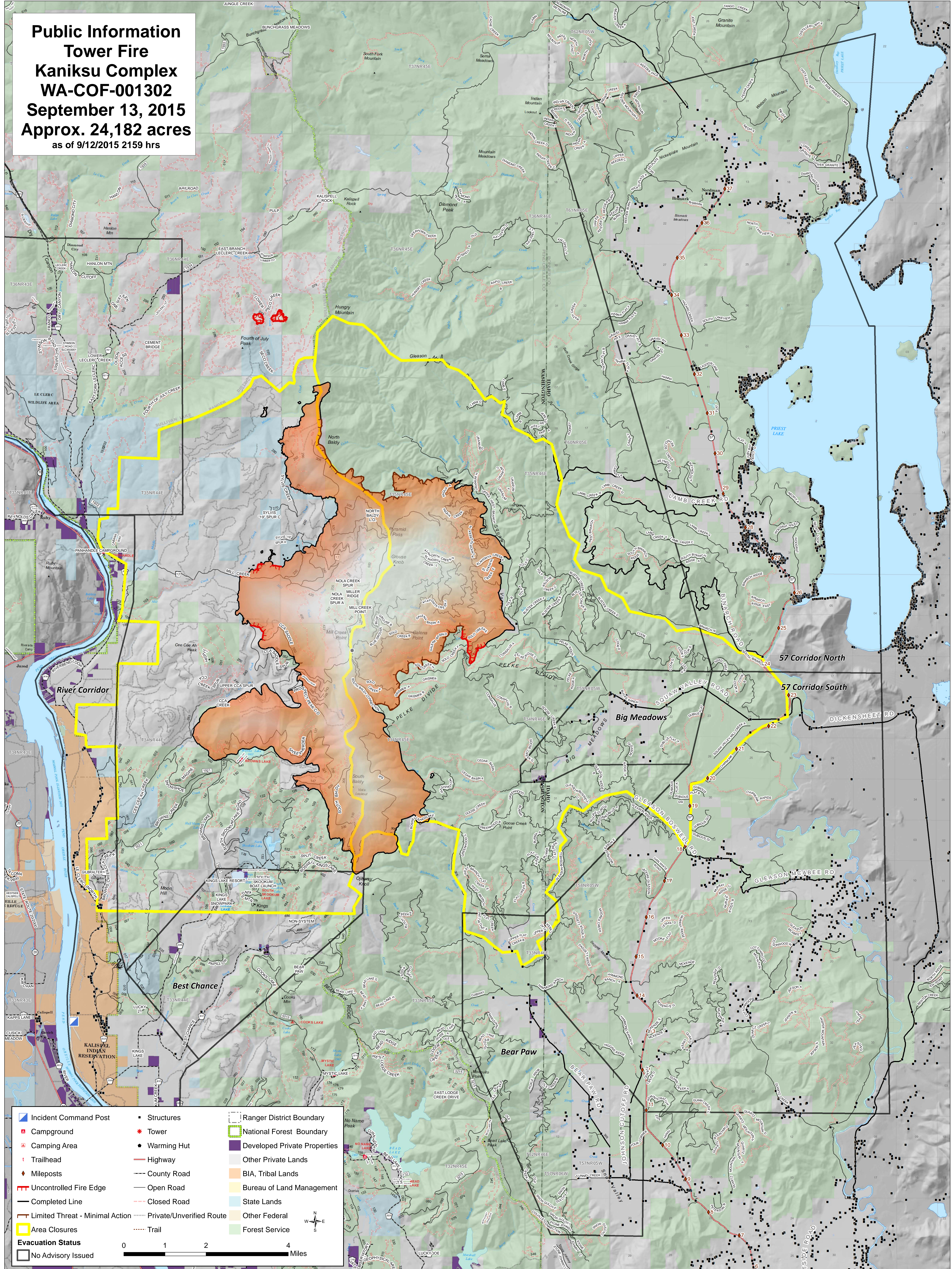


**Public Information**  
**Tower Fire**  
**Kaniksu Complex**  
**WA-COF-001302**  
**September 13, 2015**  
**Approx. 24,182 acres**  
 as of 9/12/2015 2159 hrs



Incident Command Post	Structures	Ranger District Boundary
Campground	Tower	National Forest Boundary
Camping Area	Warming Hut	Developed Private Properties
Trailhead	Highway	Other Private Lands
Mileposts	County Road	BIA, Tribal Lands
Uncontrolled Fire Edge	Open Road	Bureau of Land Management
Completed Line	Closed Road	State Lands
Limited Threat - Minimal Action	Private/Unverified Route	Other Federal
Area Closures	Trail	Forest Service
<b>Evacuation Status</b>		
No Advisory Issued		

0 1 2 4 Miles