

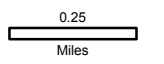
Monument Fire

WA-WFS-601

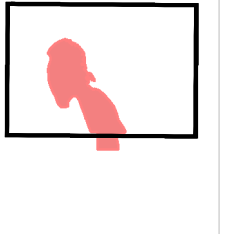
IAP Map

Day Shift
07/03/2015
approx. 1,965 acres

Perimeter as of 7/2/2015 @ 0800



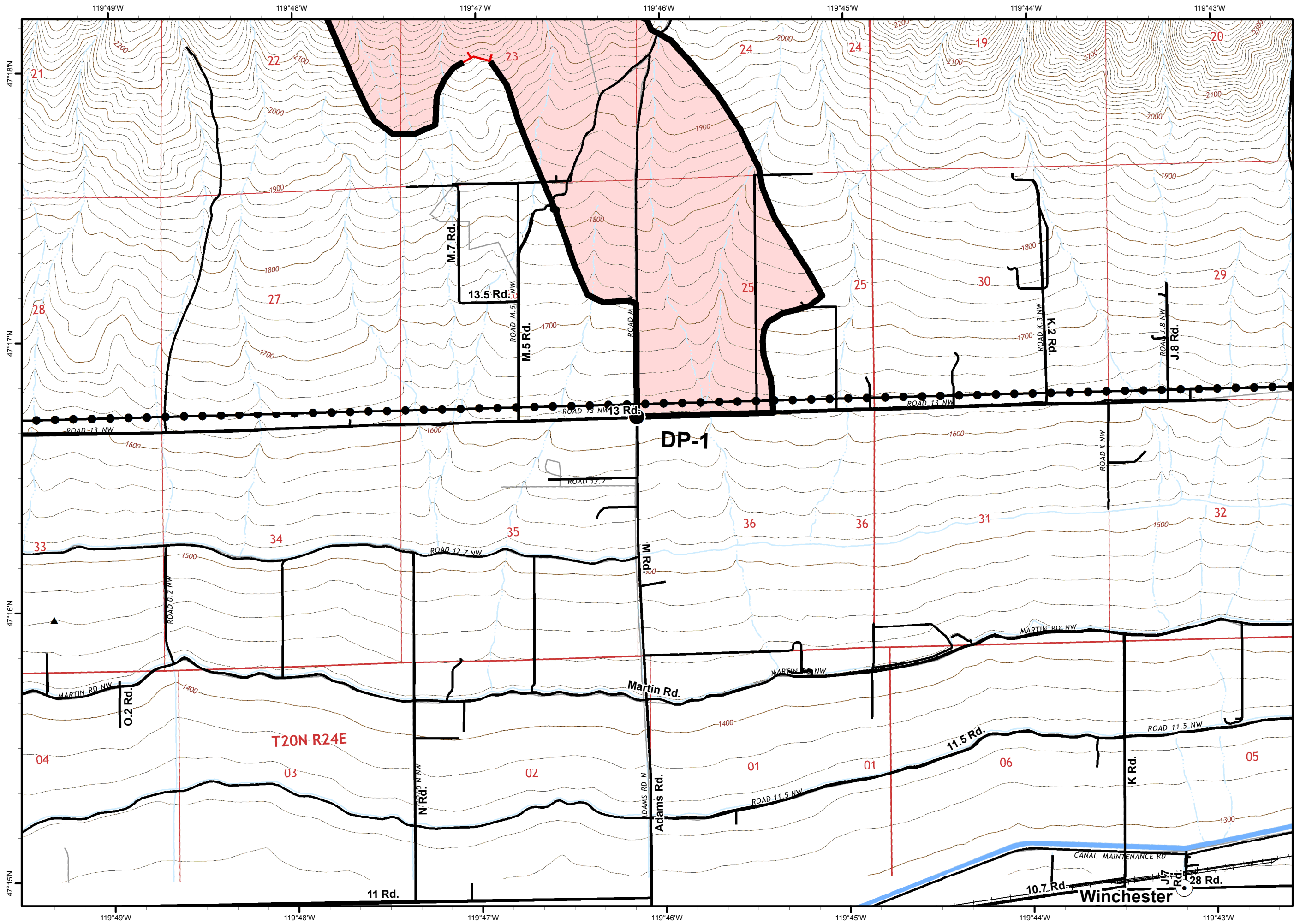
Map 1 of 2



WIMT2



- ▲ Structures
- Uncontrolled Fire Edge
- Completed Line



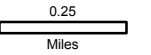
Monument Fire

WA-WFS-601

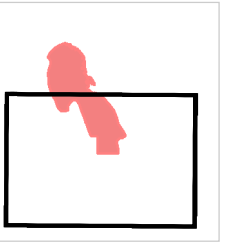
IAP Map

Day Shift
07/03/2015
approx. 1,965 acres

Perimeter as of 7/2/2015 @ 0800



Map 2 of 2



WIMT2



- Drop Point
- ▲ Structures
- Town & City Locations
- Uncontrolled Fire Edge
- Completed Line
- Railroad
- Transmission Line

Winchester