

Newby Lake Fire
 WA-OWF-377
IAP Map
 07/08/2015
 Day Shift
 1,990 acres (USA)

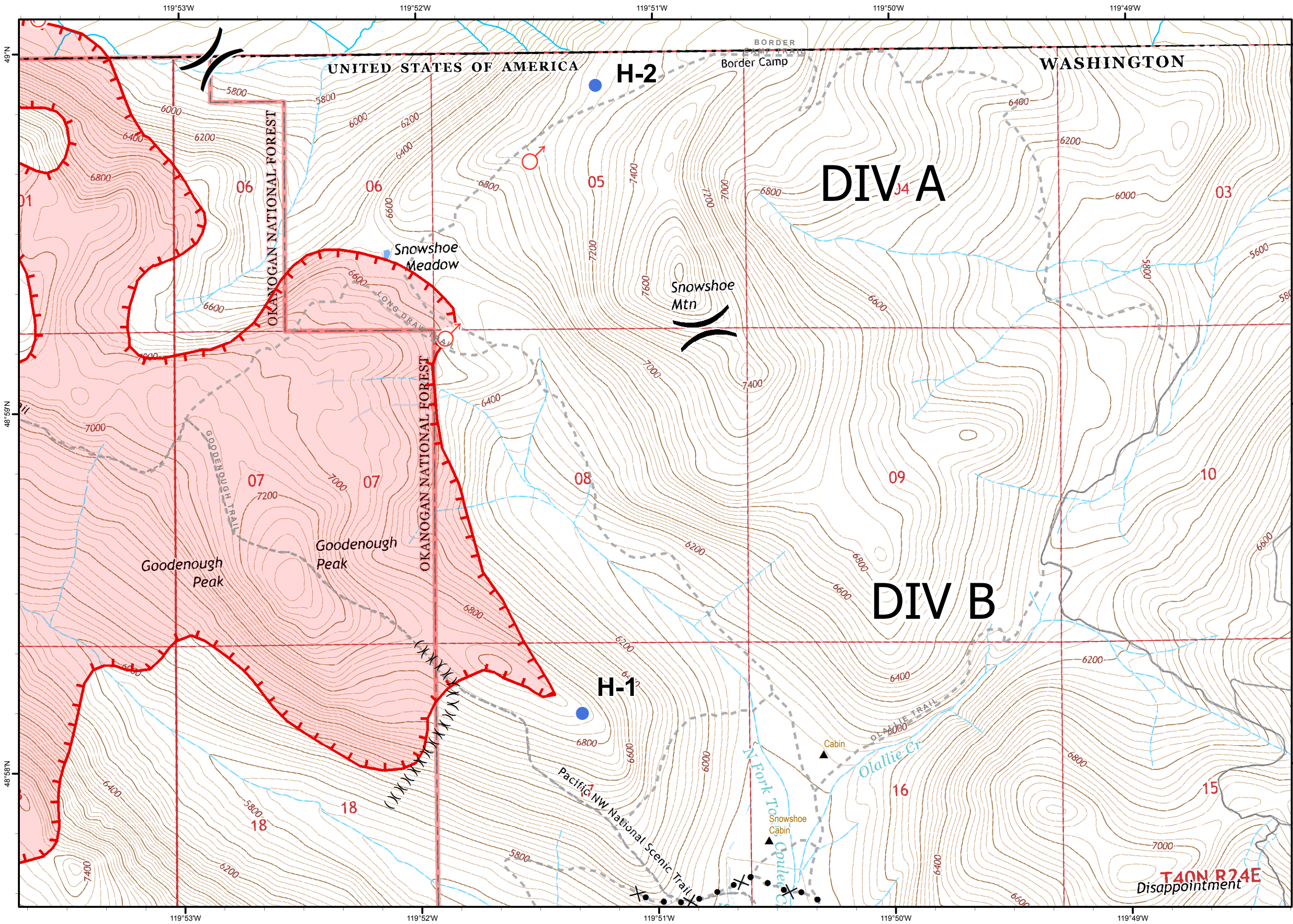
Perimeter as of 7/7/2015 @ 2000
 0.25
 Miles

Map 1 of 5

WIMT2

N
 ↑
 ↓
 N

- Helispot
- ♂ Spot Fire
- W Water Source
- Uncontrolled Fire Edge
- Ridge / Geographic Feature
- (X) Feature
- Historic Fires
- Trails



Newby Lake Fire
 WA-OWF-377
IAP Map
 07/08/2015
 Day Shift
 1,990 acres (USA)

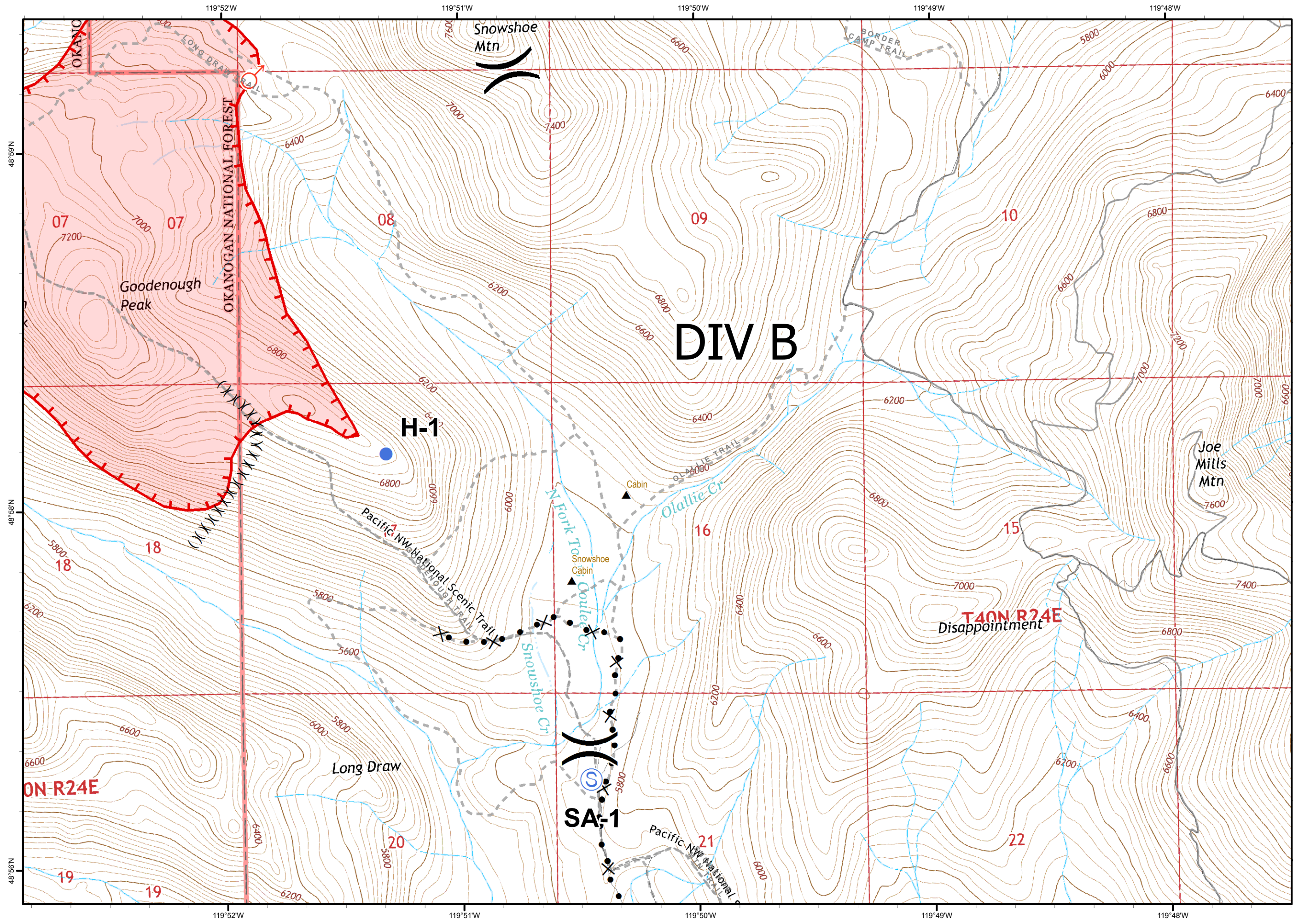
Perimeter as of 7/7/2015 @ 2000
 0.25 Miles

Map 2 of 5

WIMT2

North Arrow

- Helispot
- ♂ Spot Fire
- Uncontrolled Fire Edge
- Ridge / Geographic Feature
- ⊗ Tripod Completed Dozer Line
- - Trails



Newby Lake Fire

WA-OWF-377

IAP Map
07/08/2015
Day Shift
1,990 acres (USA)

Perimeter as of 7/7/2015 @ 2000

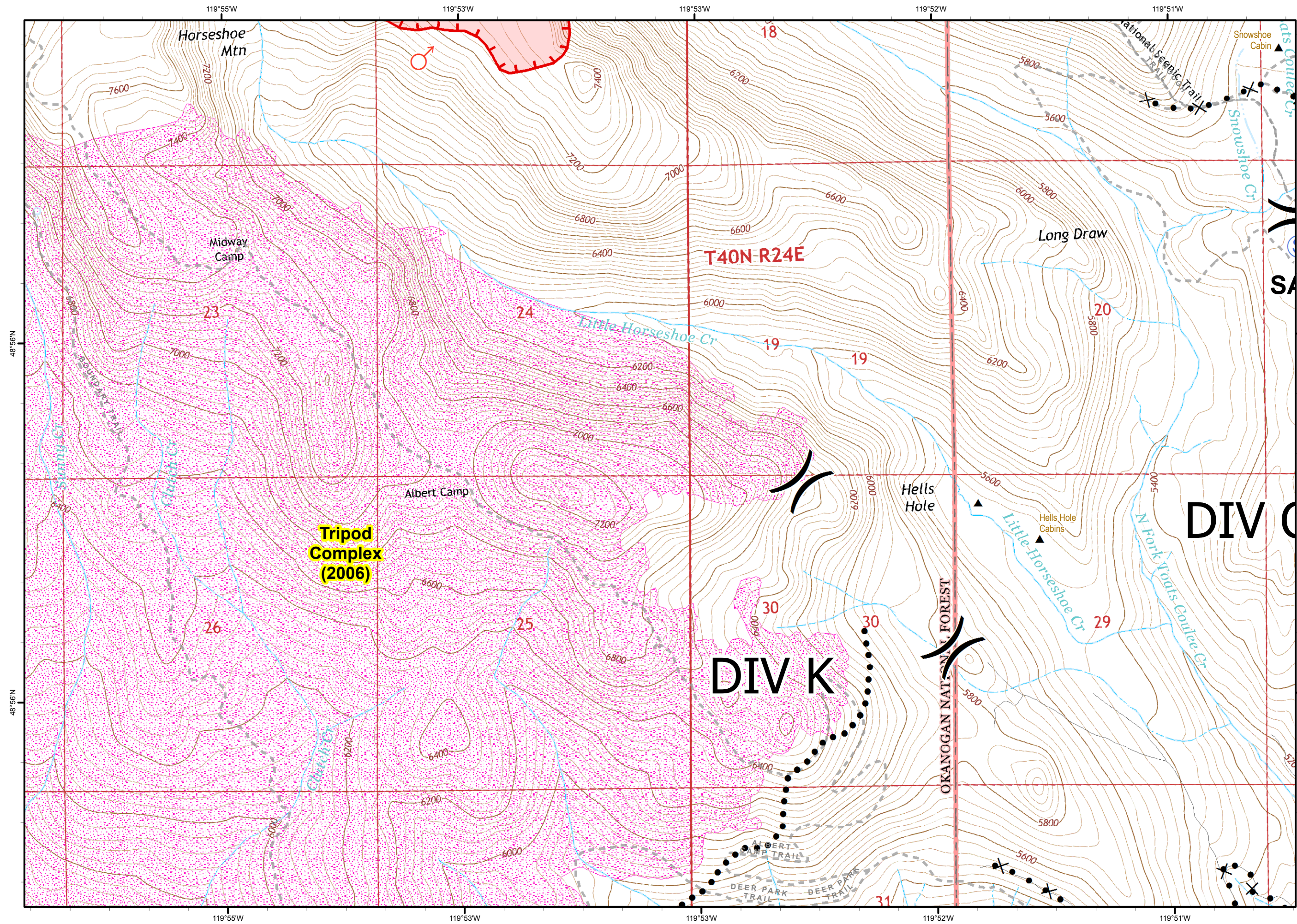
0.25
Miles

Map 3 of 5

WIMT2

N
N

- Helispot
- Spot Fire
- Staging Area
- Uncontrolled Fire Edge
- Ridge / Geographic Feature
- Tripod Completed Dozer Line
- Trails



Newby Lake Fire

WA-OWF-377

IAP Map
07/08/2015
Day Shift
1,990 acres (USA)

Perimeter as of 7/7/2015 @ 2000

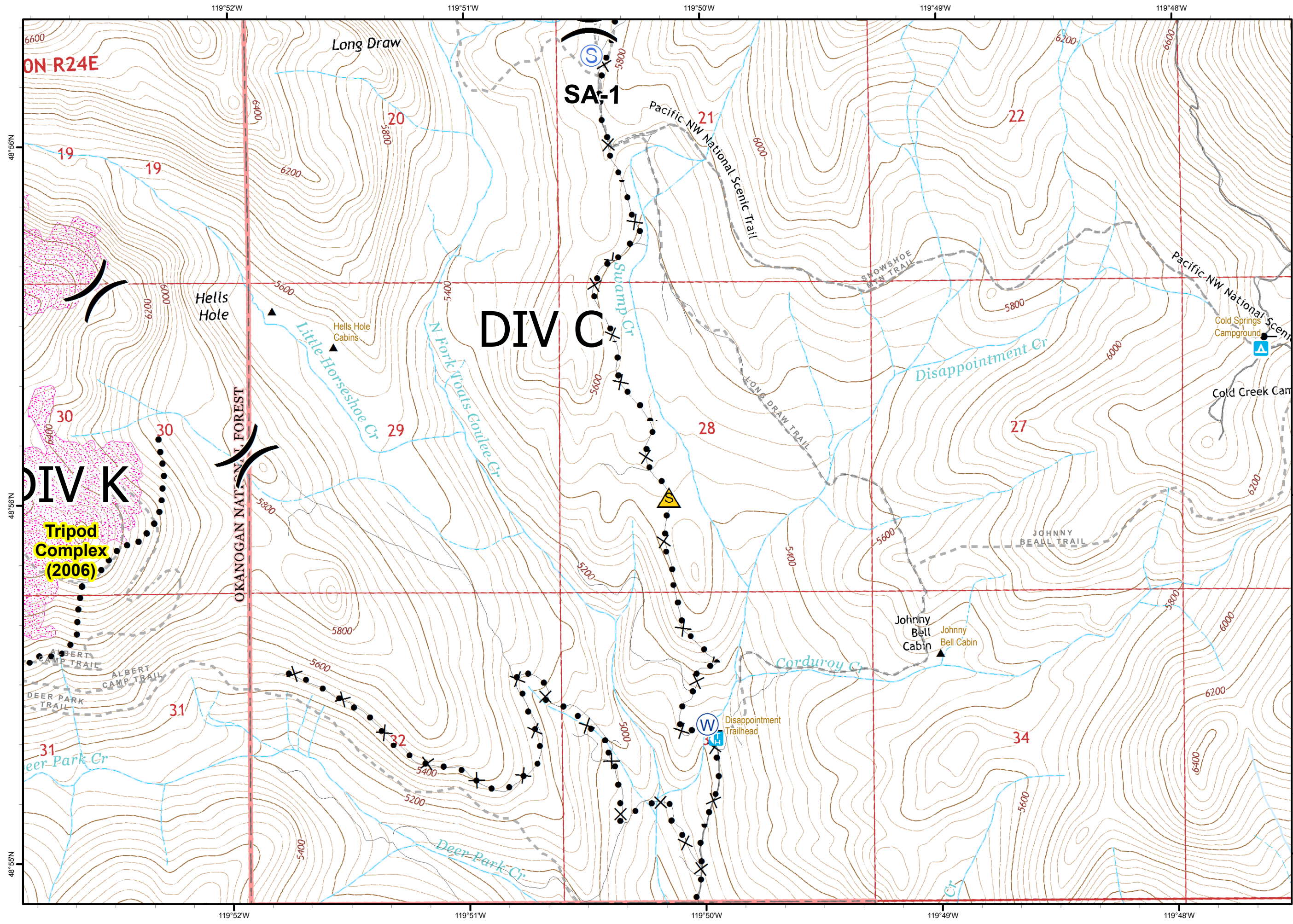
0.25
Miles

Map 4 of 5

WIMT2

N
N

- Spot Fire
- Staging Area
- Uncontrolled Fire Edge
- Historic Fires
- Tripod Completed Dozer Line
- Tripod Completed Hand Line
- Trails



Newby Lake Fire

WA-OWF-377

IAP Map
07/08/2015
Day Shift
1,990 acres (USA)

Perimeter as of 7/7/2015 @ 2000

0.25 Miles

Map 5 of 5

WIMT2

North Arrow

- Gate
- ▲ Safety Zone
- Ⓢ Staging Area
- Ⓜ Water Source
- █ Historic Fires
- ✕ Tripod Completed Dozer Line
- Tripod Completed Hand Line
- - Trails