

**Newby Lake Fire**

WA-OWF-377

**IAP Map**  
07/10/2015  
Day Shift  
3,037 acres (USA)

Perimeter as of 7/9/2015 @ 2000

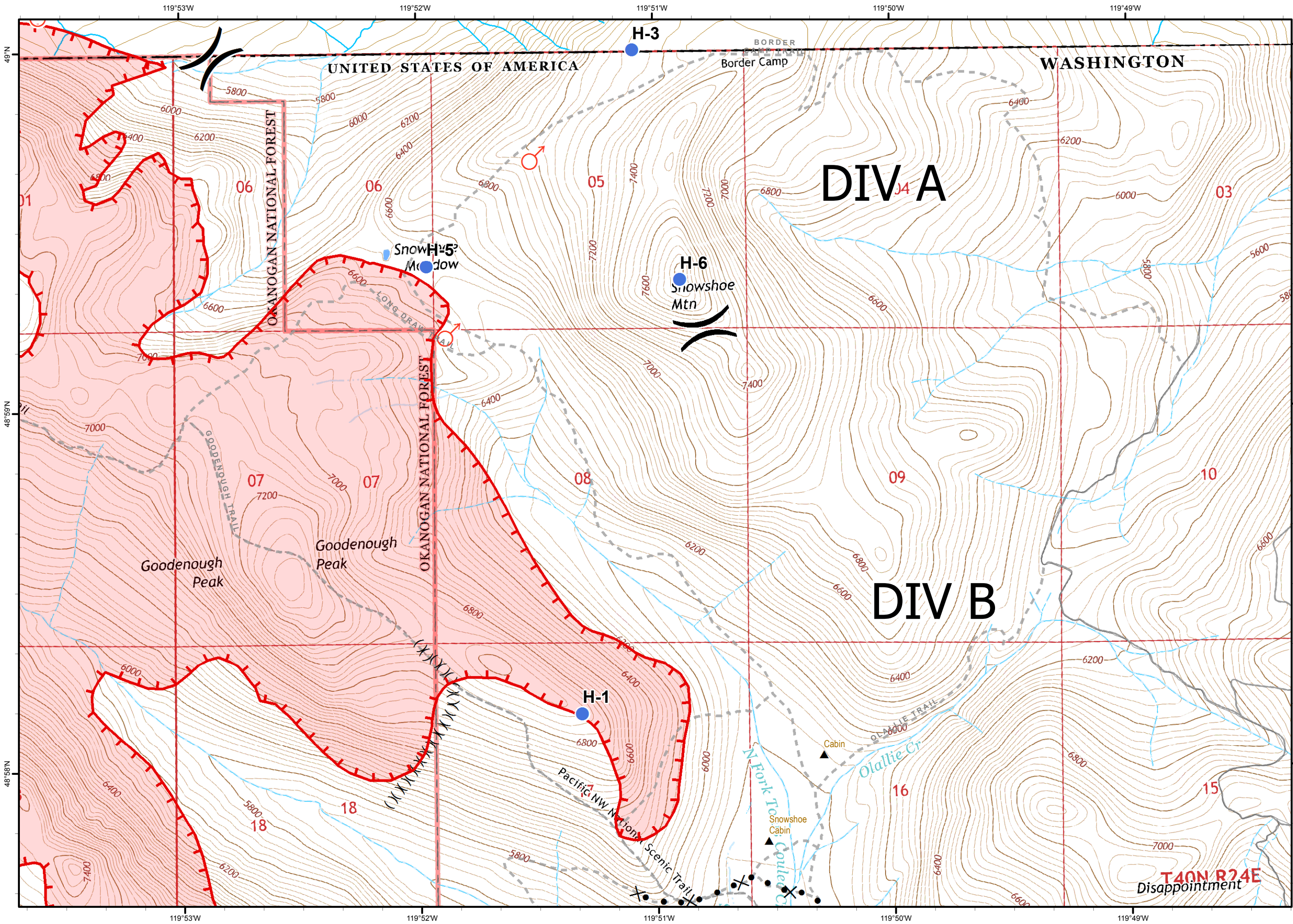
0.25  
Miles

**Map 1 of 5**

WIMT2

↑  
N  
↓

- Helispot
- Mobile Weather Unit
- Spot Fire
- Water Source
- Uncontrolled Fire Edge
- Ridge / Geographic Feature
- (X) Feature
- Historic Fires
- Trails



**Newby Lake Fire**  
 WA-OWF-377  
**IAP Map**  
 07/10/2015  
 Day Shift  
 3,037 acres (USA)

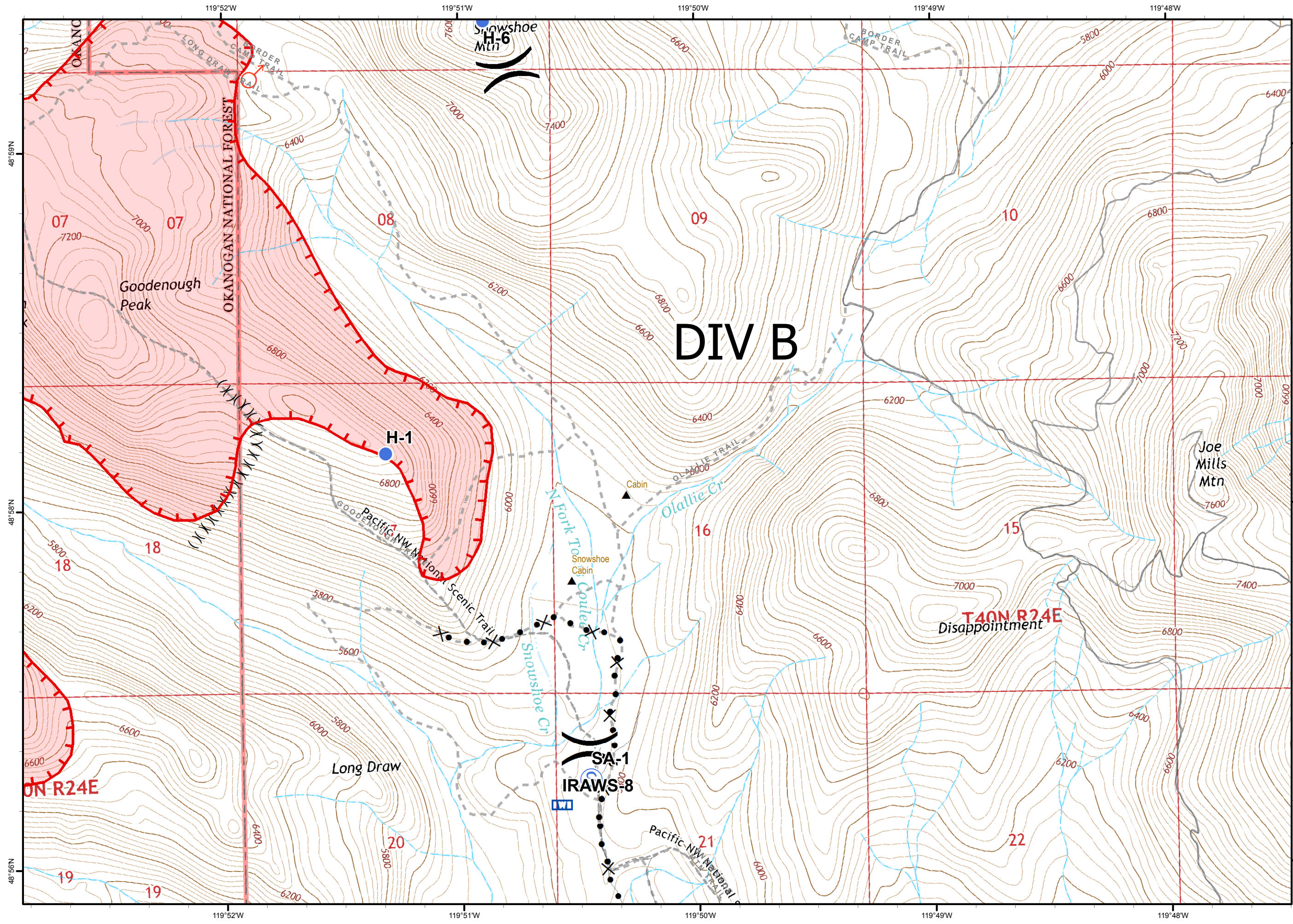
Perimeter as of 7/9/2015 @ 2000  
 0.25  
 Miles

**Map 2 of 5**

WIMT2

North Arrow

- Helispot
- ♂ Spot Fire
- ┌ Uncontrolled Fire Edge
- | Ridge / Geographic Feature
- (X) Tripod Completed Dozer Line
- Trails



**Newby Lake Fire**

WA-OWF-377

**IAP Map**  
07/10/2015  
Day Shift  
3,037 acres (USA)

Perimeter as of 7/9/2015 @ 2000

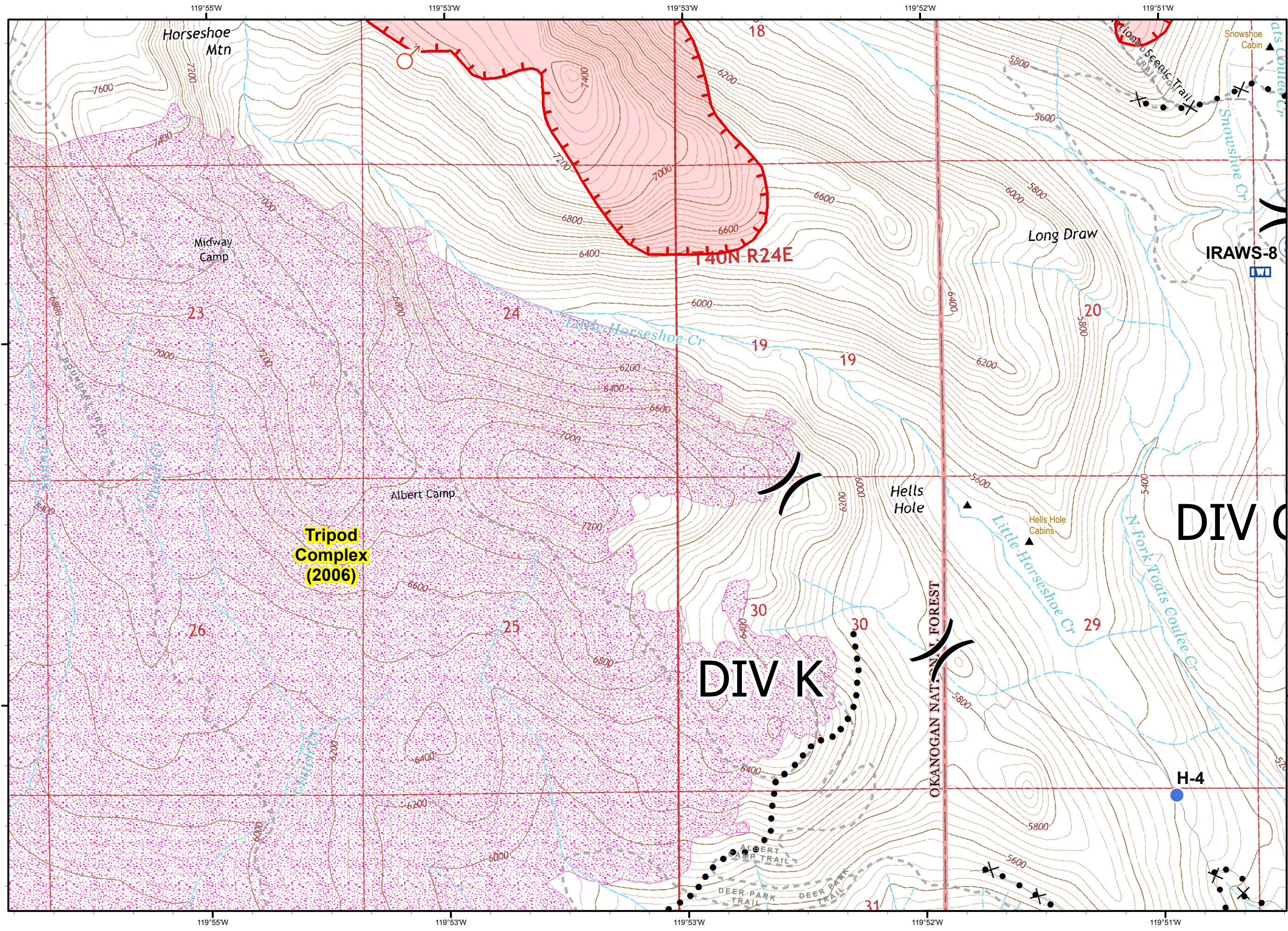
0.25  
Miles

**Map 3 of 5**

WIMT2

N  
Z

- Helispot
- Mobile Weather Unit
- Spot Fire
- Staging Area
- Uncontrolled Fire Edge
- Ridge / Geographic Feature
- Tripod Completed Dozer Line
- Trails



**Newby Lake Fire**

WA-OWF-377

**IAP Map**  
07/10/2015  
Day Shift  
3,037 acres (USA)

Perimeter as of 7/9/2015 @ 2000

0.25  
Miles

**Map 4 of 5**

WIMT2

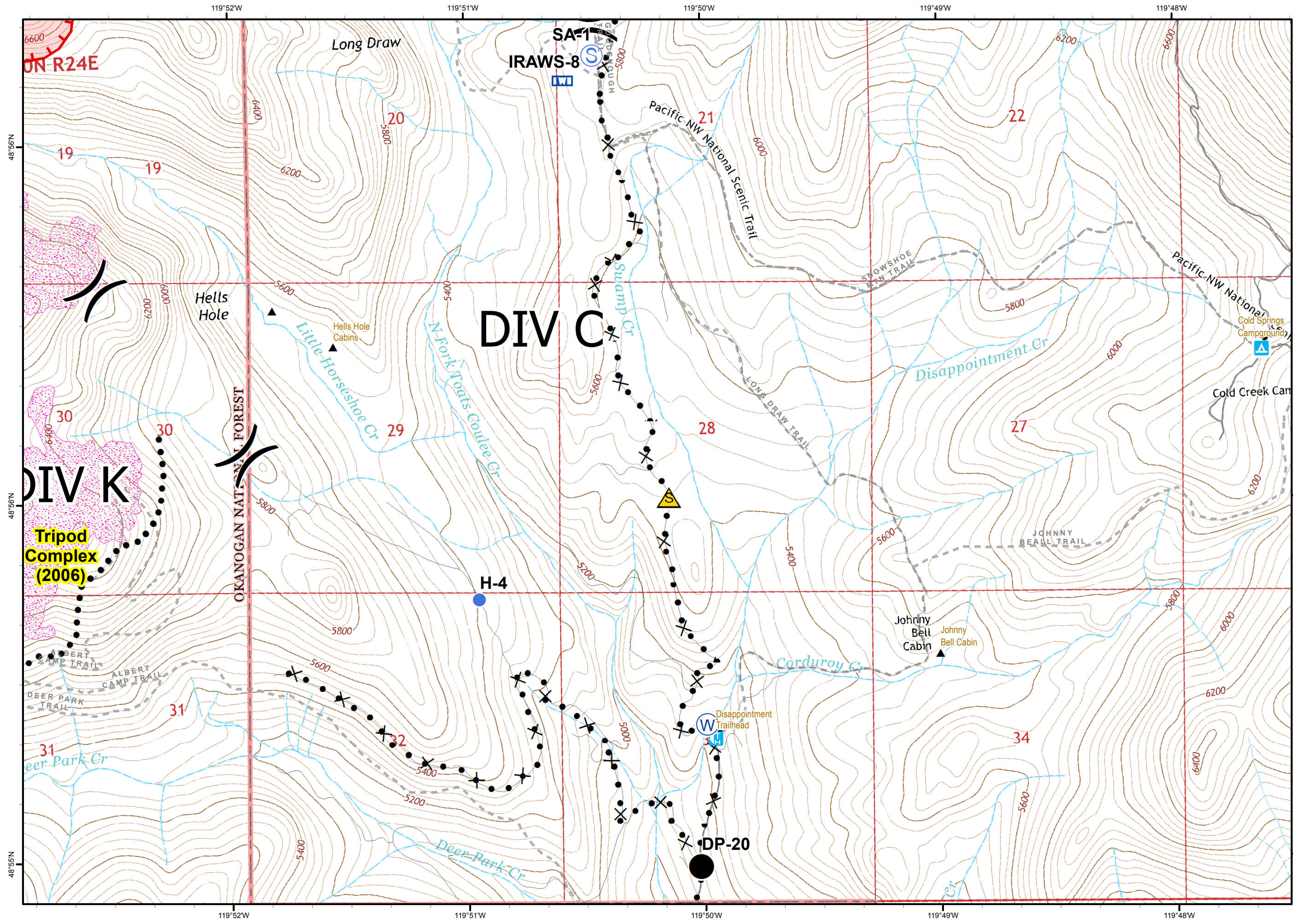
N

- Helispot
- Mobile Weather Unit
- Spot Fire
- Staging Area
- Uncontrolled Fire Edge
- Historic Fires
- Tripod Completed Dozer Line
- Tripod Completed Hand Line
- Trails

48°56'N  
48°56'N

119°55'W 119°53'W 119°53'W 119°52'W 119°51'W

119°55'W 119°53'W 119°53'W 119°52'W 119°51'W



**Newby Lake Fire**  
 WA-OWF-377

**IAP Map**  
 07/10/2015  
 Day Shift  
 3,037 acres (USA)

Perimeter as of 7/9/2015 @ 2000  
 0.25 Miles

**Map 5 of 5**

WIMT2

North Arrow

- Drop Point
- Gate
- Helispot
- W Mobile Weather Unit
- ▲ Safety Zone
- S Staging Area
- W Water Source
- Uncontrolled Fire Edge
- Historic Fires
- ✕ Tripod Completed Dozer Line
- Tripod Completed Hand Line
- Trails