

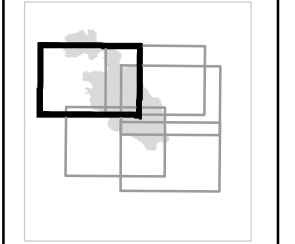
Div Z

Div W

Newby Lake Fire
 WA-OWF-377
IAP Map
 07/11/2015
 Day Shift
 5,065 acres (USA)

Perimeter as of 7/10/2015 @ 2000
 0.25
 Miles

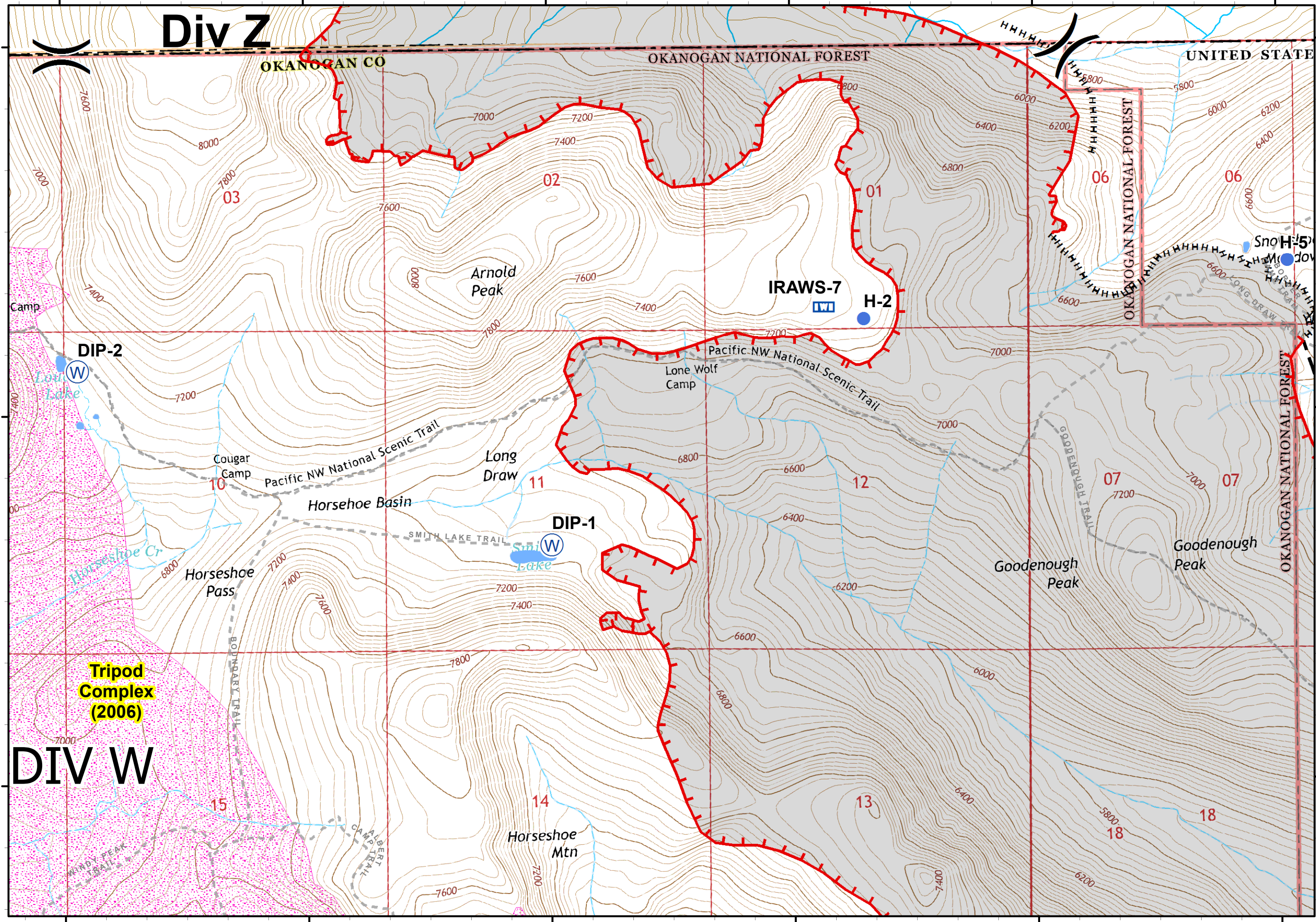
Map 1 of 5

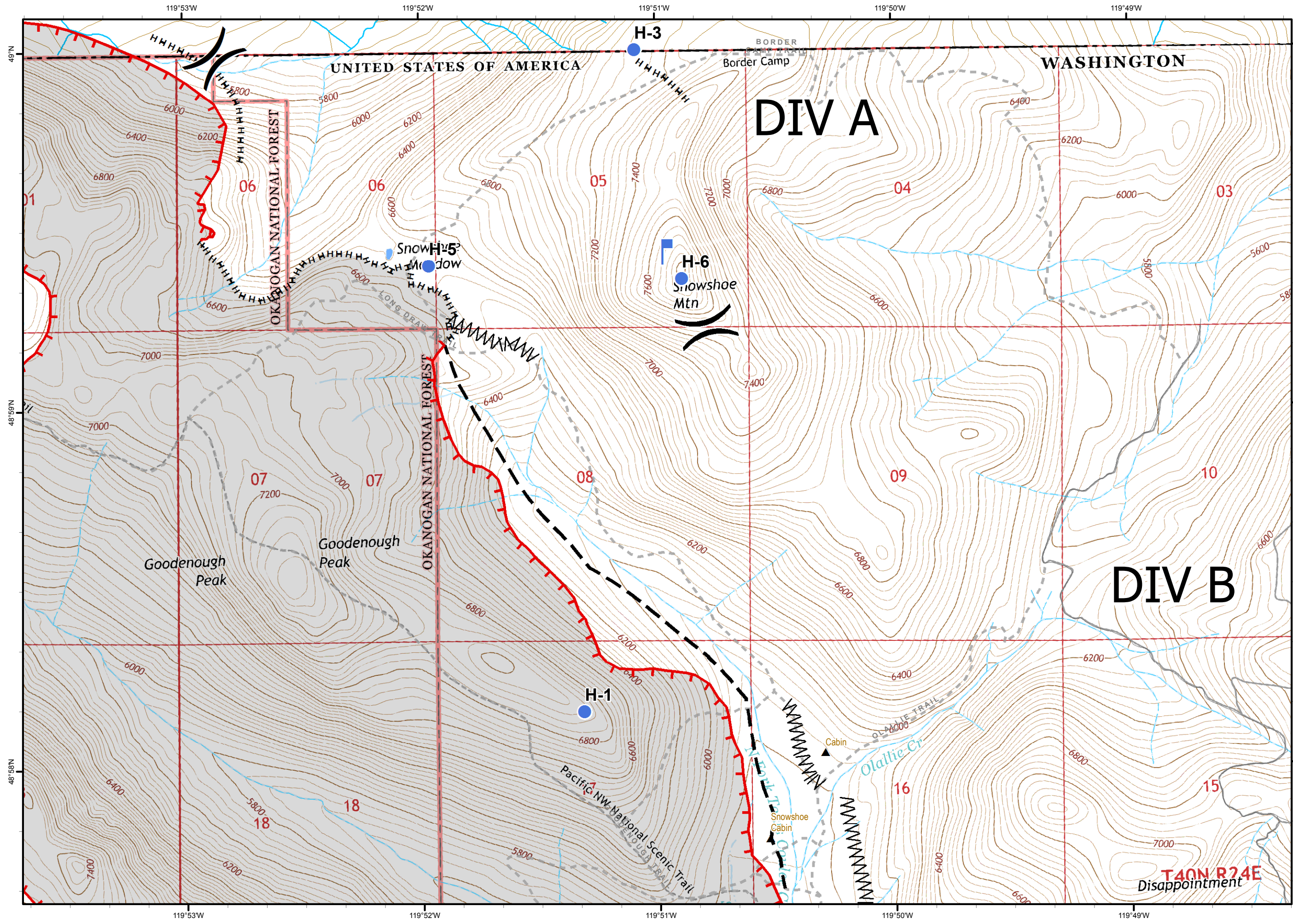


WIMT2



- Helispot
- Mobile Weather Unit
- Water Source
- Uncontrolled Fire Edge
- Hand Line
- Line Break Completed
- Planned Fire Line
- Historic Fires
- Trails





Newby Lake Fire

WA-OWF-377

IAP Map
07/11/2015
Day Shift
5,065 acres (USA)

Perimeter as of 7/10/2015 @ 2000

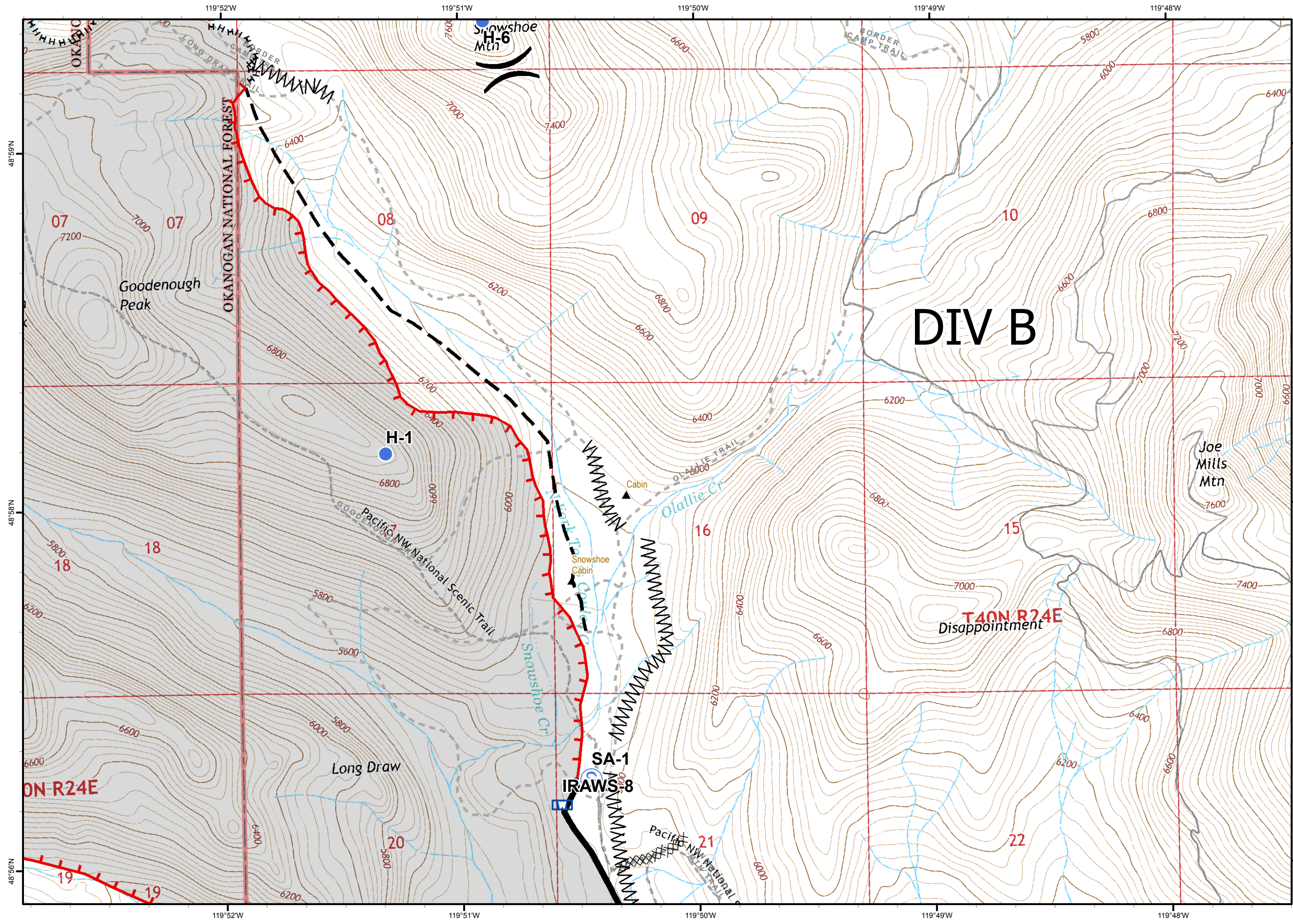
0.25
Miles

Map 2 of 5

WIMT2

N

- Helispot
- Lookout
- ┌ Uncontrolled Fire Edge
- H H H Hand Line
- ⌘ Line Break Completed
- Planned Fire Line
- - - Trails



Newby Lake Fire

WA-OWF-377

IAP Map
07/11/2015
Day Shift
5,065 acres (USA)

Perimeter as of 7/10/2015 @ 2000

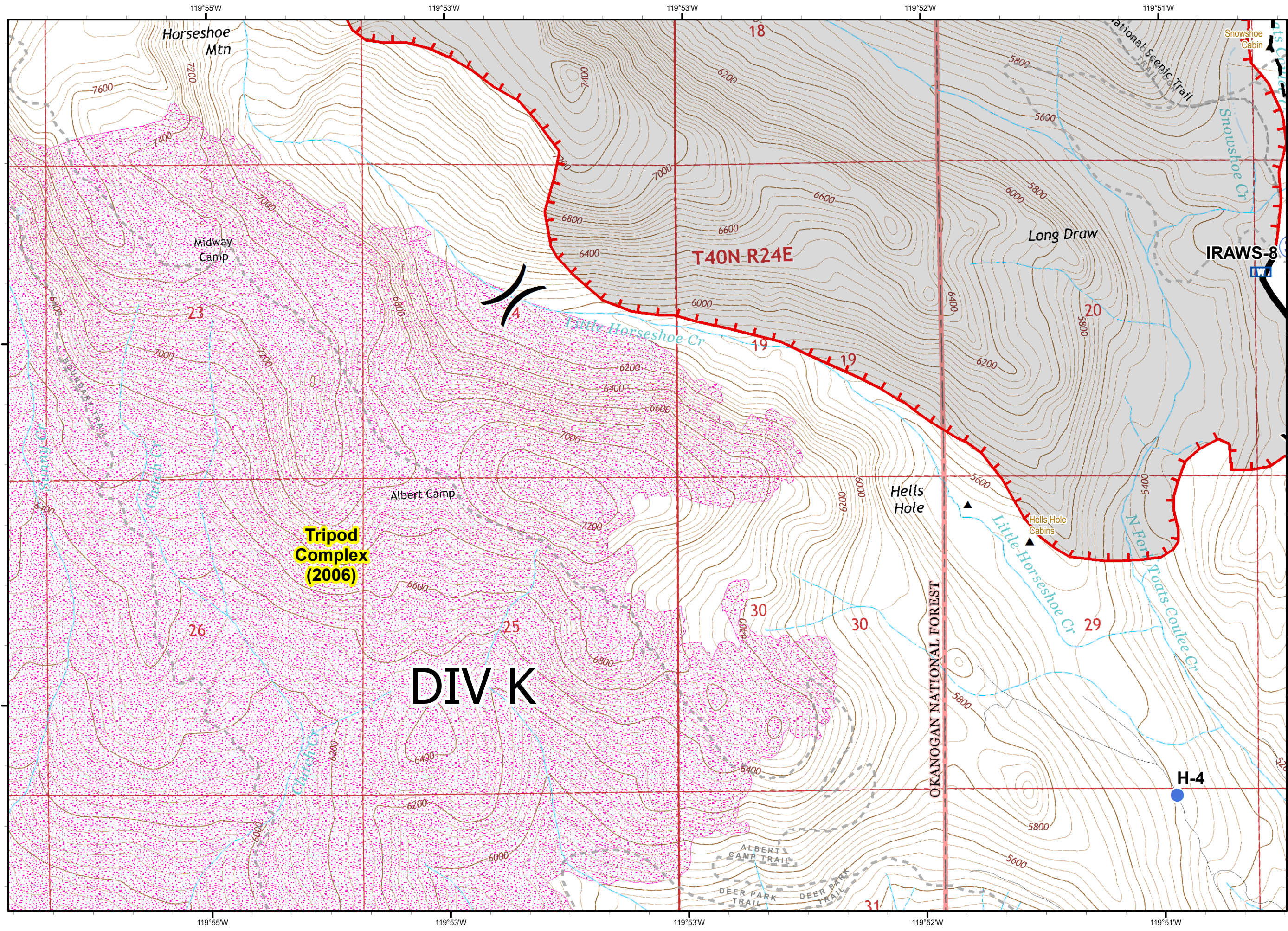
0.25
Miles

Map 3 of 5

WIMT2

North Arrow

- Helispot
- MWU Mobile Weather Unit
- S Staging Area
- Uncontrolled Fire Edge
- XXXX Completed Dozer Line
- Completed Line
- H H H Hand Line
- Line Break Completed
- Planned Fire Line
- - Trails



Newby Lake Fire

WA-OWF-377

IAP Map
07/11/2015
Day Shift
5,065 acres (USA)

Perimeter as of 7/10/2015 @ 2000

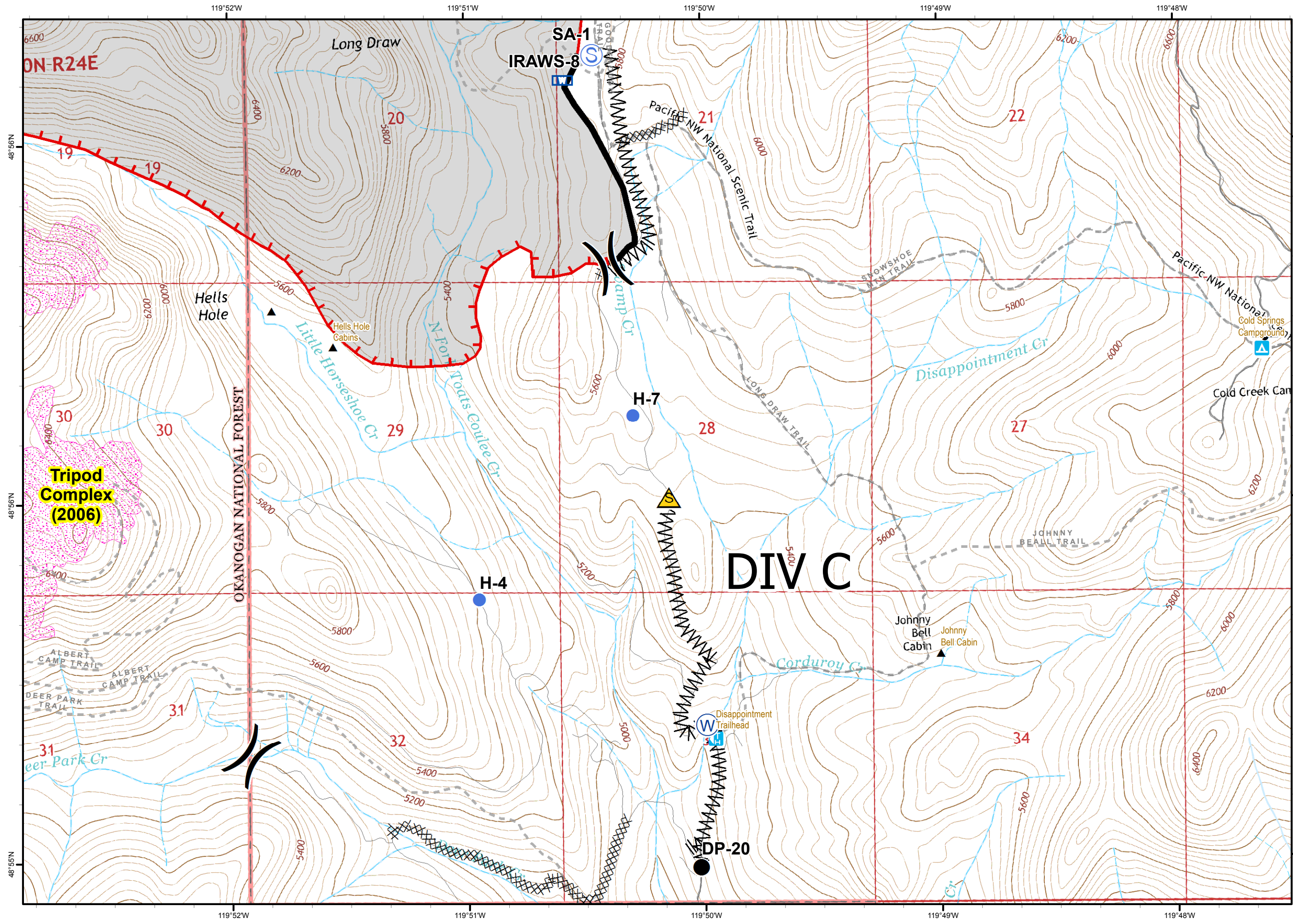
0.25
Miles

Map 4 of 5

WIMT2

N
Z

- Helispot
- ☒ Mobile Weather Unit
- Ⓢ Staging Area
- Uncontrolled Fire Edge
- Completed Line
- Planned Fire Line
- Historic Fires
- - Trails



Newby Lake Fire

WA-OWF-377

IAP Map
07/11/2015
Day Shift
5,065 acres (USA)

Perimeter as of 7/10/2015 @ 2000

0.25
Miles

Map 5 of 5

WIMT2

North Arrow

- Drop Point
- Gate
- Helispot
- W Mobile Weather Unit
- S Safety Zone
- S Staging Area
- W Water Source
- Uncontrolled Fire Edge
- Completed Dozer Line
- Completed Line
- Line Break Completed
- Historic Fires
- Trails