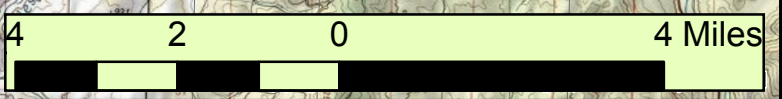
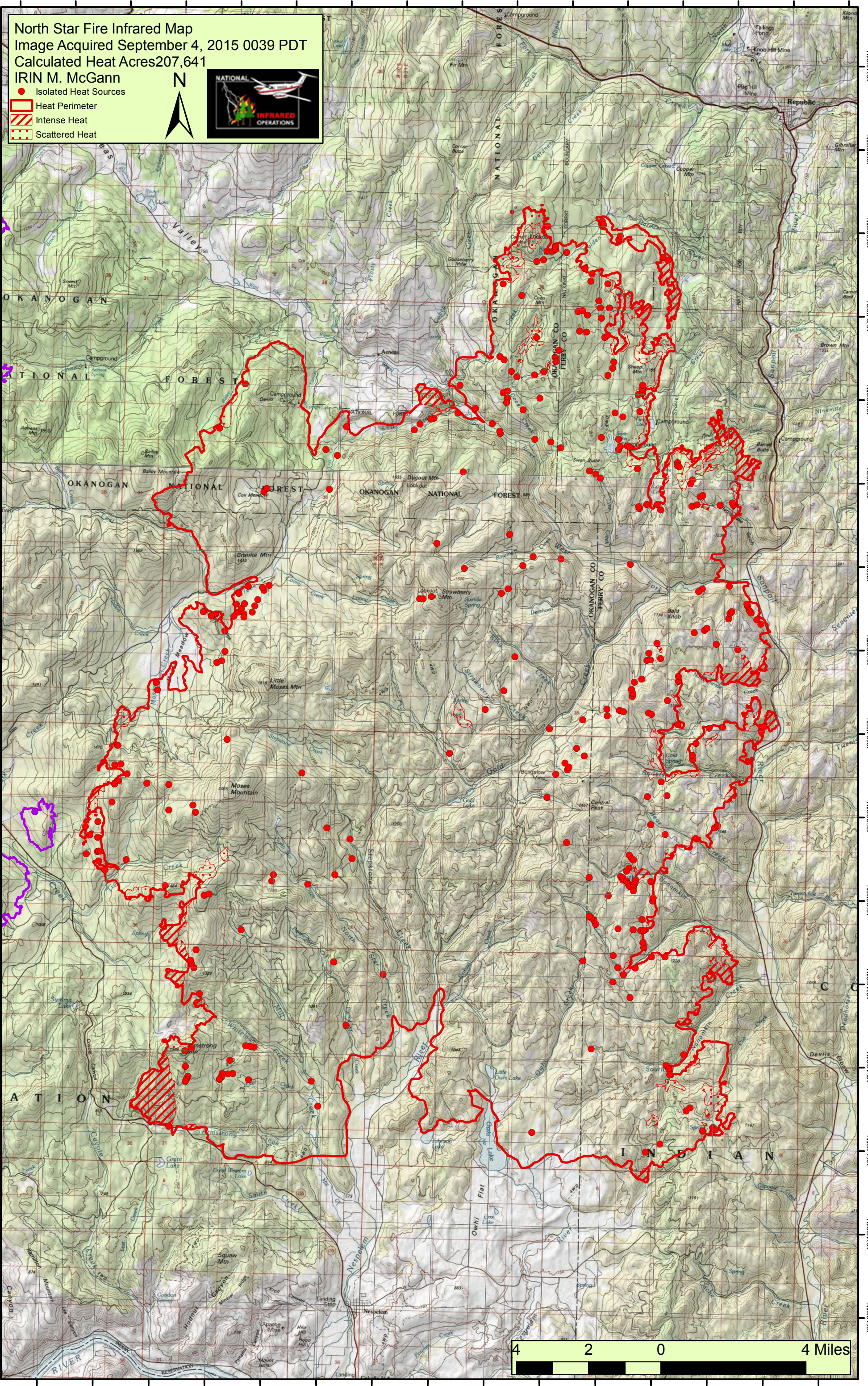


119°12'0"W 119°10'0"W 119°8'0"W 119°6'0"W 119°4'0"W 119°2'0"W 119°0'0"W 118°58'0"W 118°56'0"W 118°54'0"W 118°52'0"W 118°50'0"W 118°48'0"W 118°46'0"W 118°44'0"W 118°42'0"W

North Star Fire Infrared Map
Image Acquired September 4, 2015 0039 PDT
Calculated Heat Acres 207,641
IRIN M. McGann

- Isolated Heat Sources
- ▭ Heat Perimeter
- ▨ Intense Heat
- ▤ Scattered Heat



119°10'0"W 119°8'0"W 119°6'0"W 119°4'0"W 119°2'0"W 119°0'0"W 118°58'0"W 118°56'0"W 118°54'0"W 118°52'0"W 118°50'0"W 118°48'0"W 118°46'0"W 118°44'0"W 118°42'0"W