





120°16'W 120°13'W 120°11'W 120°9'W 120°7'W 120°5'W 120°3'W 120°1'W 119°59'W 119°57'W 119°55'W 119°53'W 119°51'W 119°49'W 119°47'W 119°45'W 119°43'W 119°41'W 119°39'W 119°37'W 119°35'W 119°33'W 119°31'W 119°29'W 119°27'W 119°25'W 119°23'W 119°21'W 119°19'W 119°17'W

Progression Date	Growth (ac.)	Total Size (ac.)
 2015-08-16@2030	-	9,567
 2015-08-17@2130	3,098	12,665
 2015-08-18@2247	15,158	27,823
 2015-08-19@2239	68,208	96,303

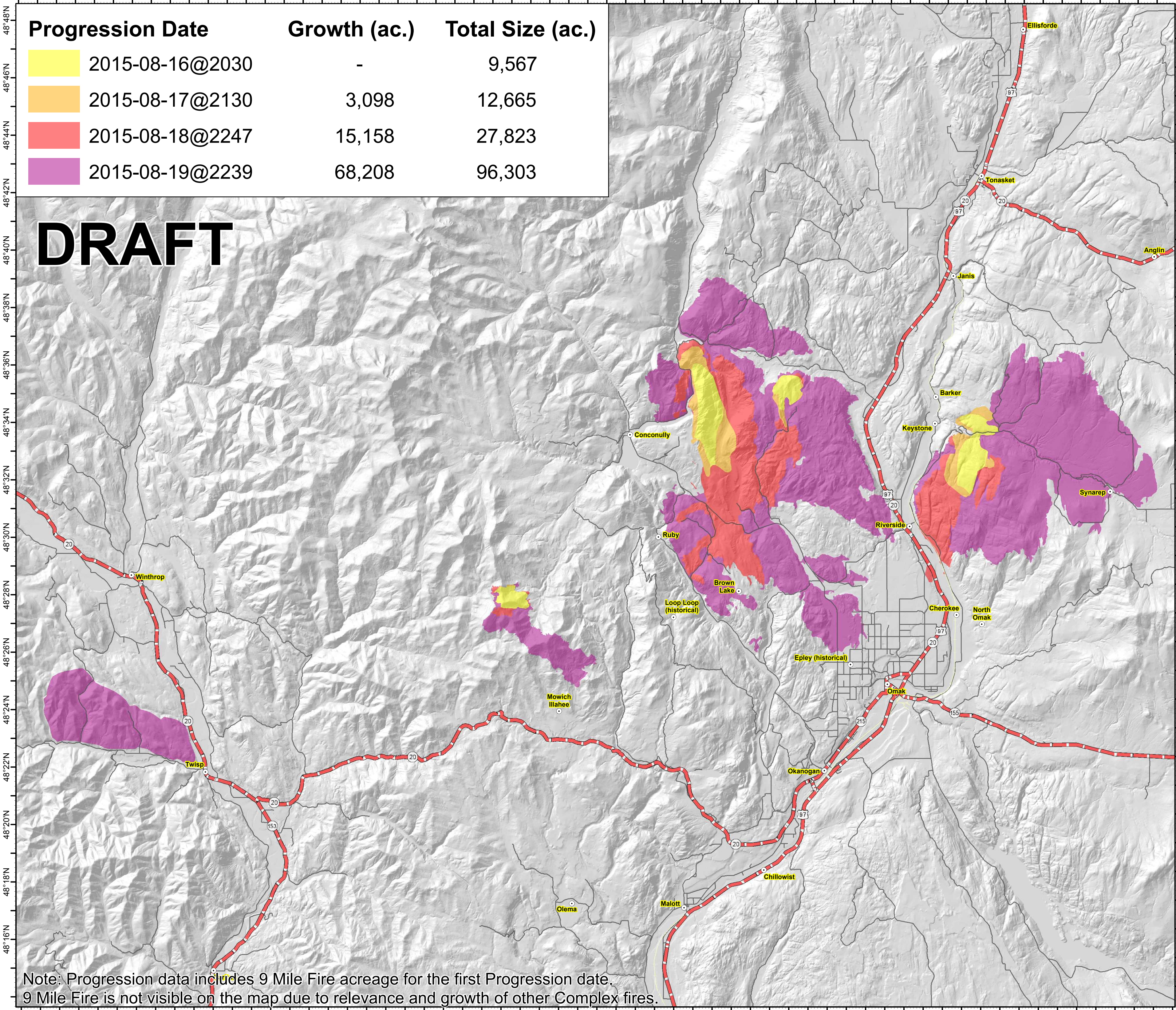
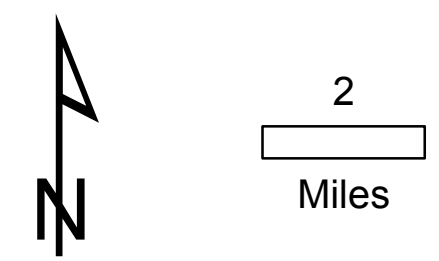
DRAFT

Okanogan Complex

WA-NES-1203

Progression Map

8/20/2015



Note: Progression data includes 9 Mile Fire acreage for the first Progression date.
 9 Mile Fire is not visible on the map due to relevance and growth of other Complex fires.

○ Town & City Locations

120°17'W 120°15'W 120°13'W 120°11'W 120°9'W 120°7'W 120°5'W 120°3'W 120°1'W 119°59'W 119°57'W 119°55'W 119°53'W 119°51'W 119°49'W 119°47'W 119°45'W 119°43'W 119°41'W 119°39'W 119°37'W 119°35'W 119°33'W 119°31'W 119°29'W 119°27'W 119°25'W 119°23'W 119°21'W 119°19'W 119°17'W