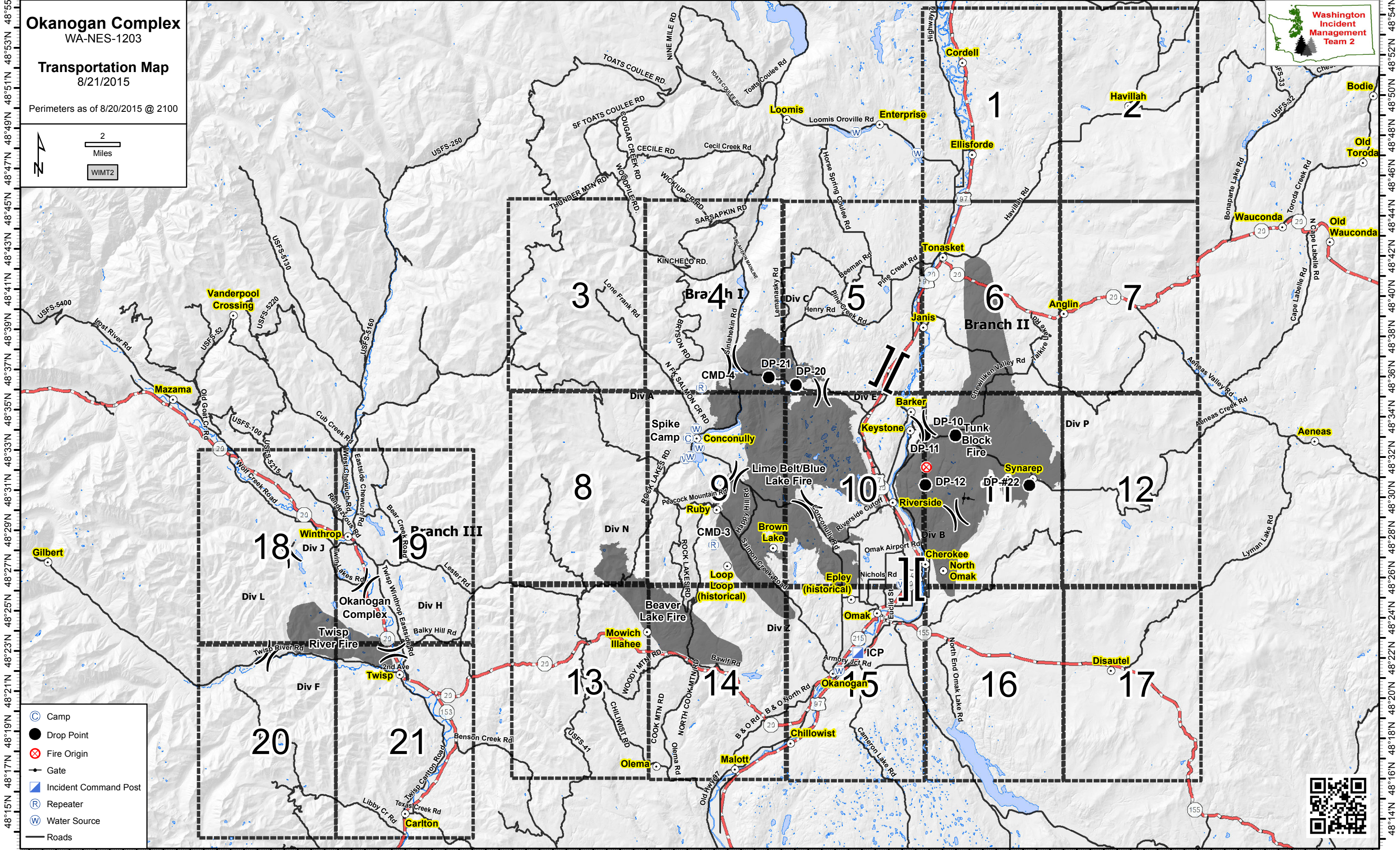
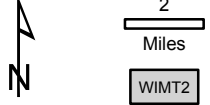


120°33'W 120°29'W 120°25'W 120°21'W 120°17'W 120°13'W 120°9'W 120°6'W 120°3'W 120°0'W 119°56'W 119°52'W 119°48'W 119°44'W 119°40'W 119°36'W 119°32'W 119°28'W 119°24'W 119°20'W 119°16'W 119°12'W 119°8'W 119°5'W 119°2'W 118°58'W 118°54'W

Okanogan Complex WA-NES-1203

Transportation Map 8/21/2015

Perimeters as of 8/20/2015 @ 2100



- Camp
- Drop Point
- Fire Origin
- Gate
- Incident Command Post
- Repeater
- Water Source
- Roads



120°35'W 120°31'W 120°27'W 120°23'W 120°19'W 120°15'W 120°11'W 120°7'W 120°4'W 120°1'W 119°57'W 119°53'W 119°49'W 119°45'W 119°41'W 119°37'W 119°33'W 119°29'W 119°25'W 119°21'W 119°17'W 119°13'W 119°9'W 119°6'W 119°3'W 118°59'W 118°55'W