

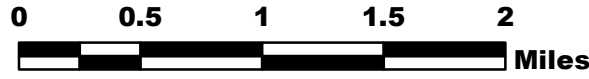
Okanogan Complex WA-NES-1203

Division P 8/25/15

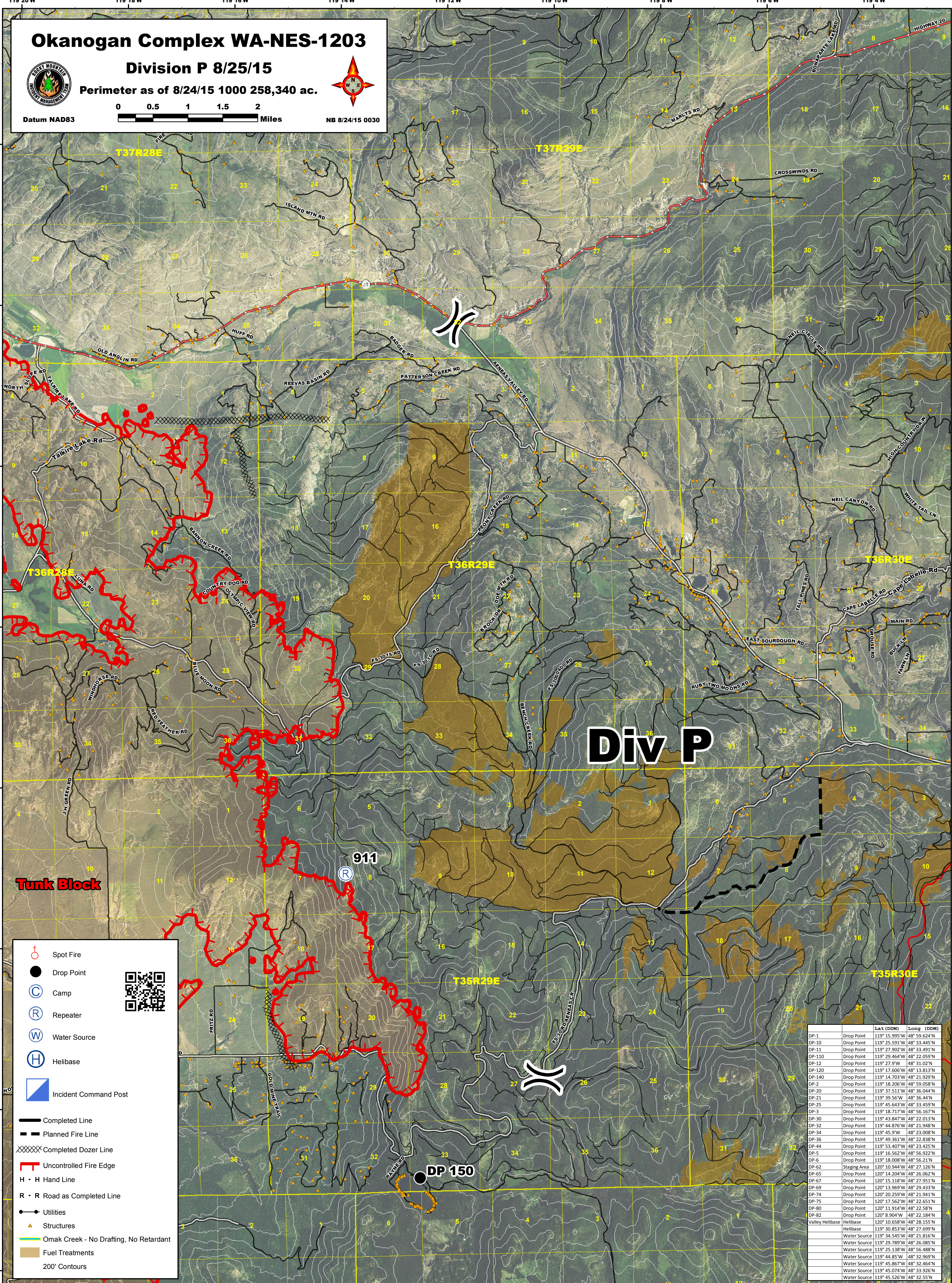
Perimeter as of 8/24/15 1000 258,340 ac.



Datum NAD83



NB 8/24/15 0030



Tunk Block

Div P

911

DP 150

- Spot Fire
- Drop Point
- Camp
- Repeater
- Water Source
- Helibase
- Incident Command Post
- Completed Line
- Planned Fire Line
- Completed Dozer Line
- Uncontrolled Fire Edge
- H - H Hand Line
- R - R Road as Completed Line
- Utilities
- Structures
- Omak Creek - No Drafting, No Retardant
- Fuel Treatments
- 200' Contours



		Lat (DDM)	Long (DDM)
DP-1	Drop Point	119° 15.995'W	48° 59.624'N
DP-10	Drop Point	119° 25.991'W	48° 33.445'N
DP-11	Drop Point	119° 27.902'W	48° 33.491'N
DP-110	Drop Point	119° 29.464'W	48° 22.059'N
DP-12	Drop Point	119° 27.9'W	48° 31.02'N
DP-120	Drop Point	119° 17.606'W	48° 13.813'N
DP-140	Drop Point	119° 14.703'W	48° 21.929'N
DP-2	Drop Point	119° 18.206'W	48° 59.058'N
DP-20	Drop Point	119° 37.511'W	48° 36.044'N
DP-21	Drop Point	119° 39.56'W	48° 36.44'N
DP-25	Drop Point	119° 45.643'W	48° 33.459'N
DP-3	Drop Point	119° 18.717'W	48° 56.167'N
DP-30	Drop Point	119° 43.847'W	48° 22.013'N
DP-32	Drop Point	119° 44.876'W	48° 21.948'N
DP-34	Drop Point	119° 45.9'W	48° 23.008'N
DP-36	Drop Point	119° 49.361'W	48° 22.838'N
DP-44	Drop Point	119° 53.407'W	48° 23.425'N
DP-5	Drop Point	119° 16.562'W	48° 56.922'N
DP-6	Drop Point	119° 18.008'W	48° 56.21'N
DP-62	Staging Area	120° 10.944'W	48° 27.126'N
DP-65	Drop Point	120° 14.204'W	48° 26.062'N
DP-67	Drop Point	120° 15.118'W	48° 27.951'N
DP-69	Drop Point	120° 13.969'W	48° 29.433'N
DP-74	Drop Point	120° 20.259'W	48° 21.941'N
DP-75	Drop Point	120° 17.562'W	48° 22.651'N
DP-80	Drop Point	120° 11.914'W	48° 22.58'N
DP-82	Drop Point	120° 8.904'W	48° 22.184'N
Valley Helibase	Helibase	120° 10.658'W	48° 28.155'N
	Helibase	119° 30.853'W	48° 27.699'N
	Water Source	119° 34.545'W	48° 21.816'N
	Water Source	119° 29.789'W	48° 26.085'N
	Water Source	119° 25.138'W	48° 56.488'N
	Water Source	119° 44.85'W	48° 32.969'N
	Water Source	119° 45.867'W	48° 32.464'N
	Water Source	119° 45.074'W	48° 33.926'N
	Water Source	119° 45.526'W	48° 32.55'N