

Okanogan Complex WA-NES-1203

IAP Map

8/25/2015

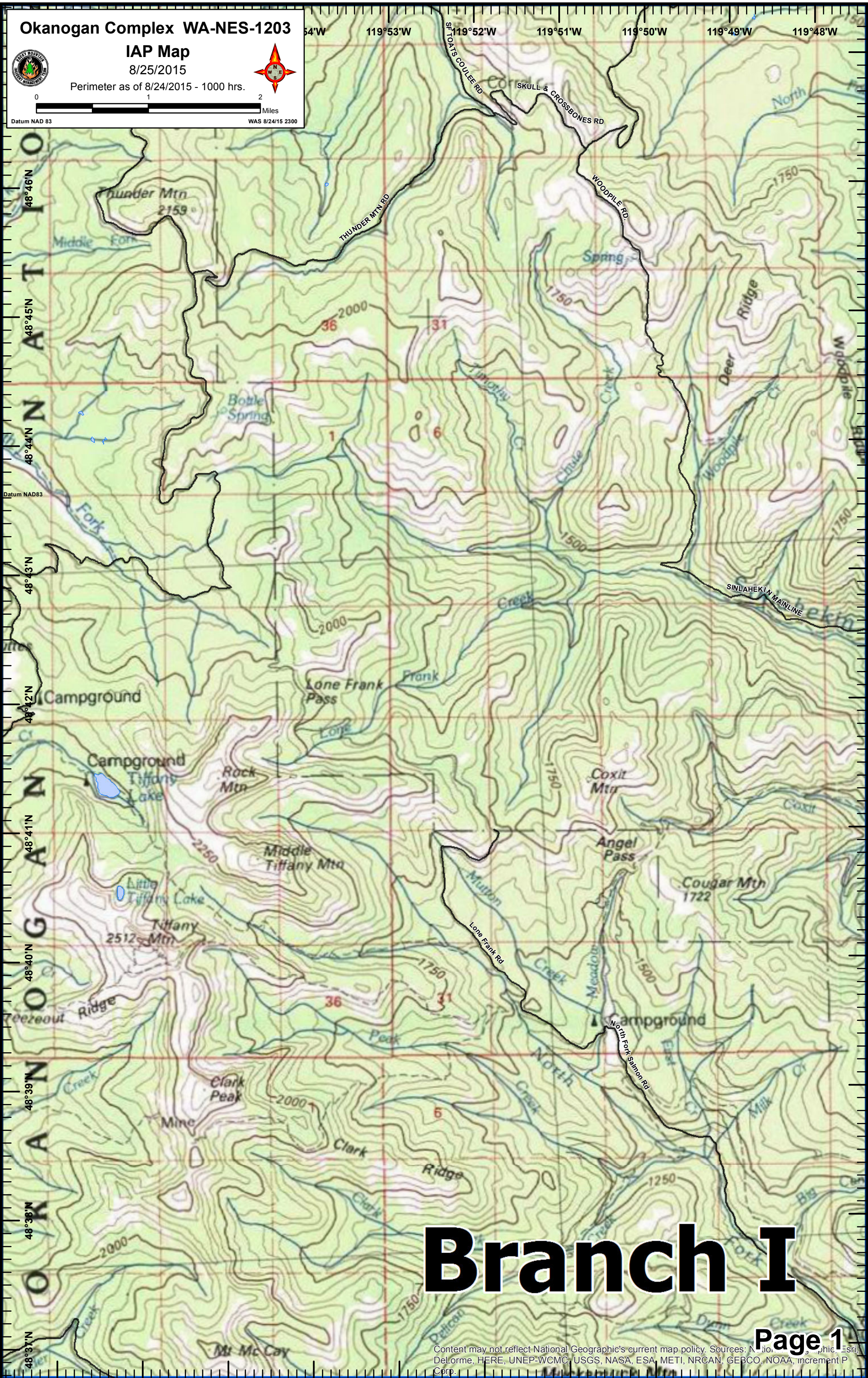
Perimeter as of 8/24/2015 - 1000 hrs.



0 1 2 Miles

Datum NAD 83

WAS 8/24/15 2300



# Branch I

Content may not reflect National Geographic's current map policy. Sources: National Geographic, Esri, DeLorme, HERE, UNEP-WCMC, USGS, NASA, ESA, METI, NRCAN, GEBCO, NOAA, increment P Corp.

Okanogan Complex WA-NES-1203

IAP Map

8/25/2015

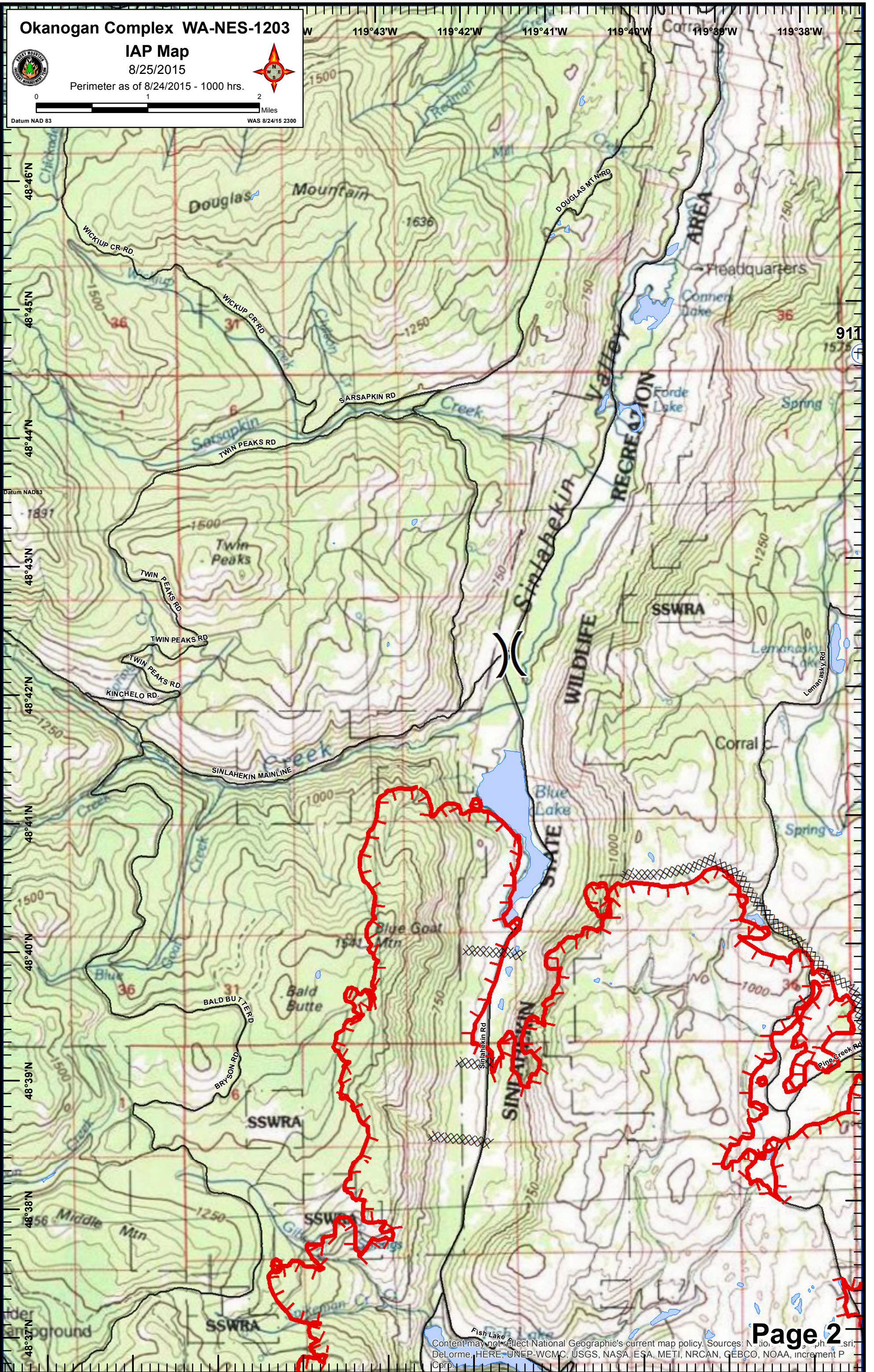
Perimeter as of 8/24/2015 - 1000 hrs.



0 1 2 Miles

Datum NAD 83

WAS 8/24/15 2300





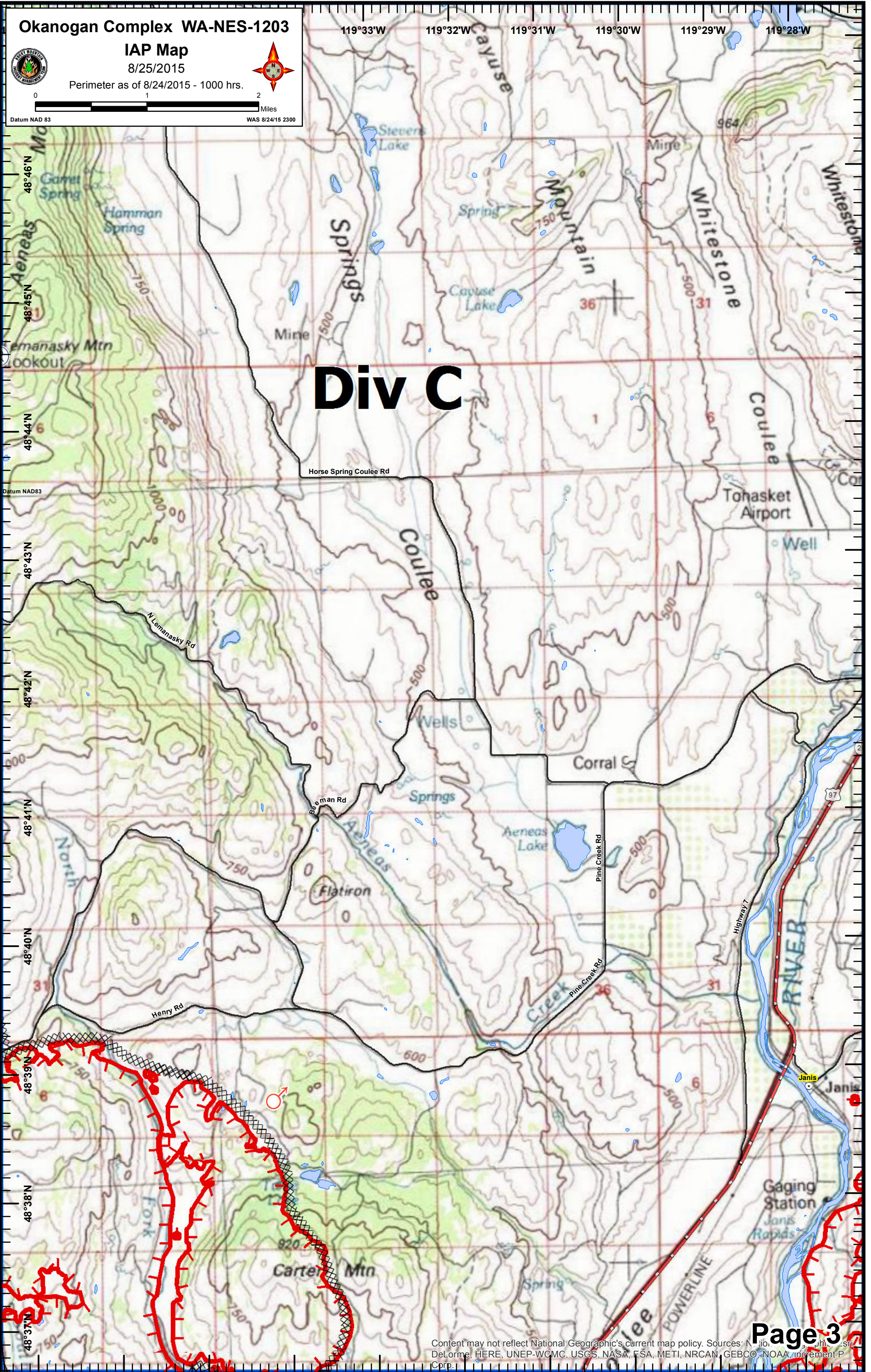
0 1 2 Miles

Datum NAD 83

WAS 8/24/15 2300

119°33'W 119°32'W 119°31'W 119°30'W 119°29'W 119°28'W

# Div C



Okanogan Complex WA-NES-1203

IAP Map

8/25/2015

Perimeter as of 8/24/2015 - 1000 hrs.



0 1 2 Miles

Datum NAD 83

WAS 8/24/15 2300

119°23'W 119°22'W 119°21'W 119°20'W 119°19'W 119°18'W 119°17'W

48°46'N

48°45'N

48°44'N

48°43'N

48°42'N

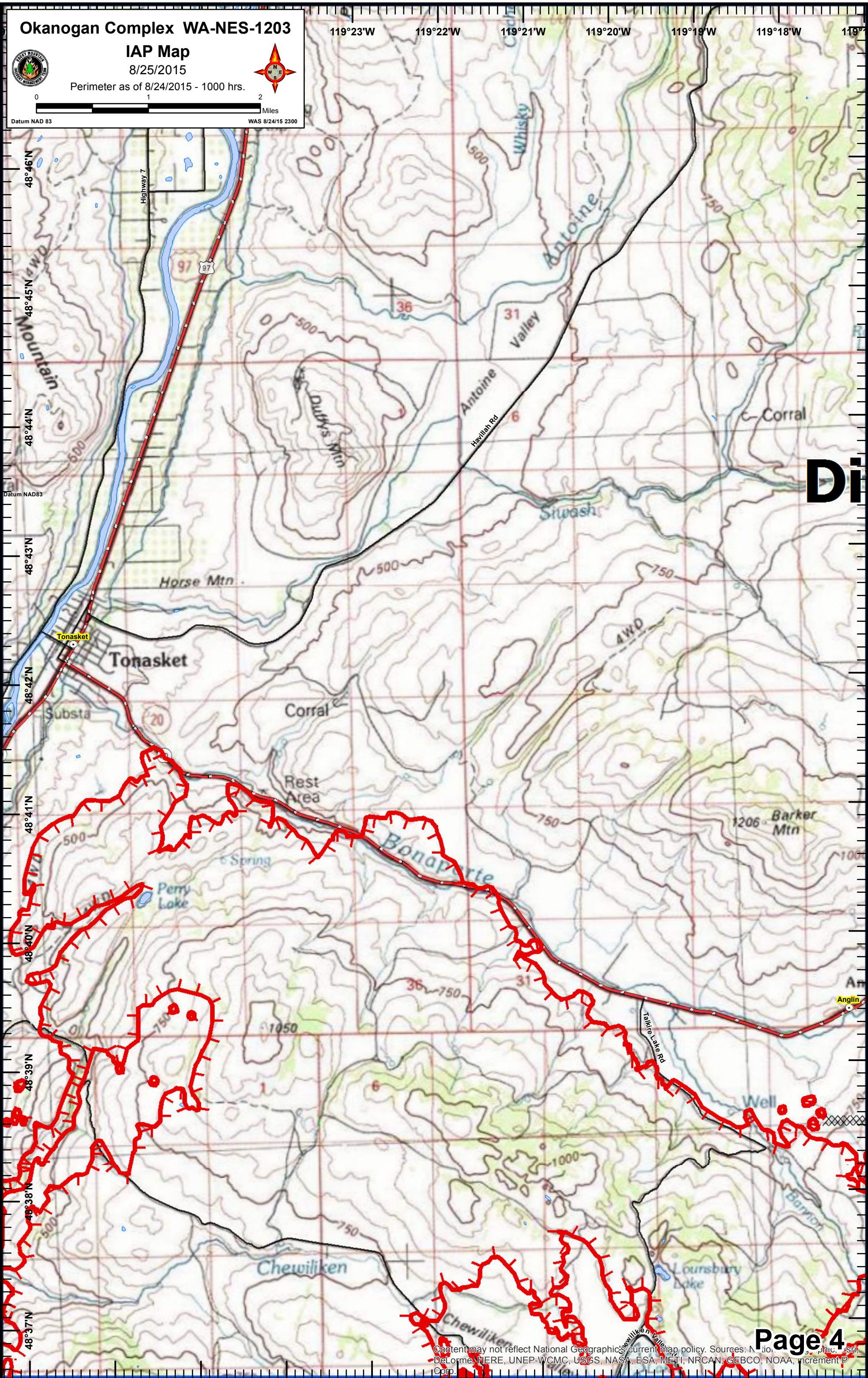
48°41'N

48°40'N

48°39'N

48°38'N

48°37'N



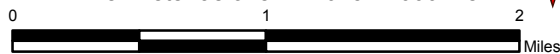
Di

Okanogan Complex WA-NES-1203

IAP Map

8/25/2015

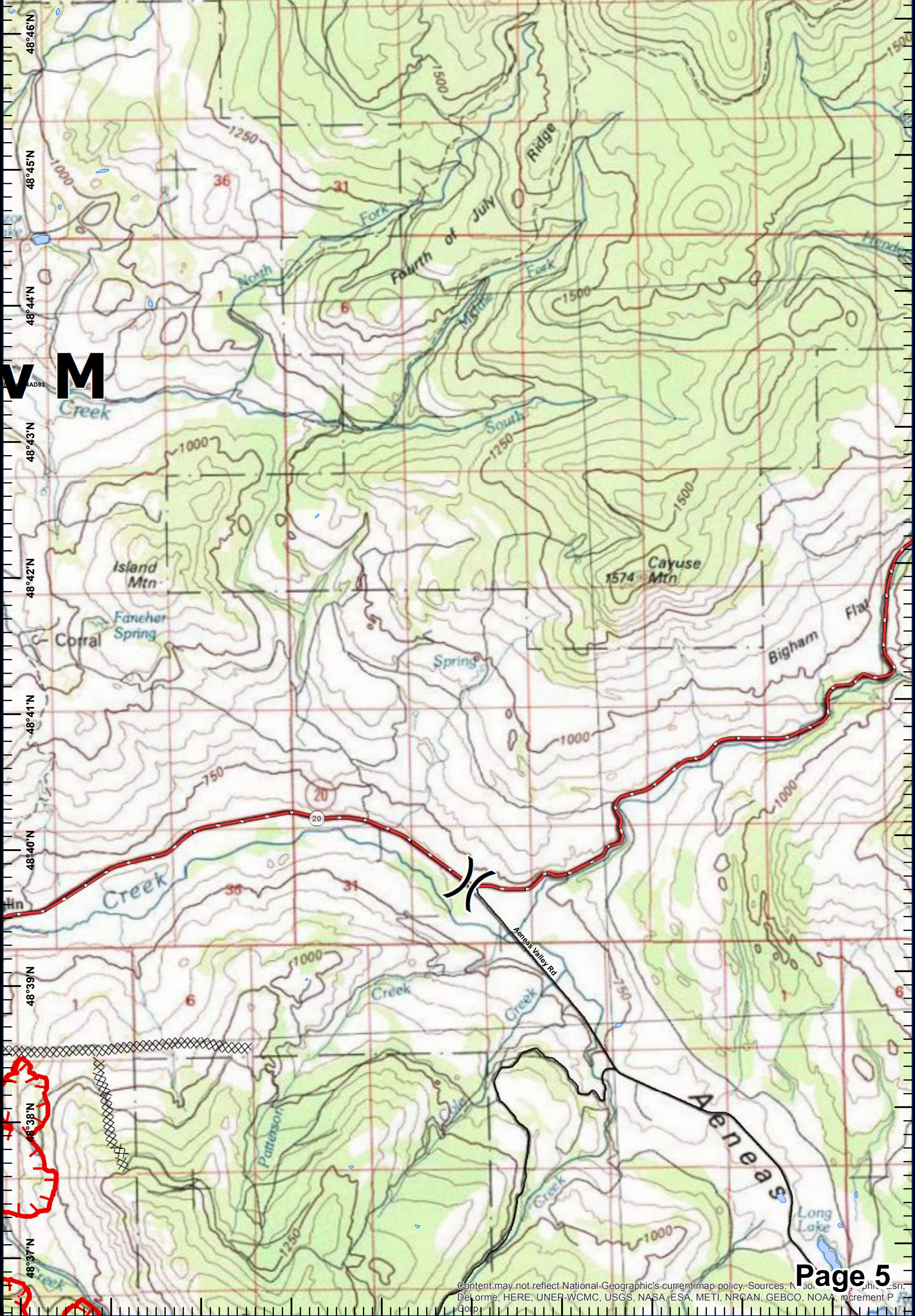
Perimeter as of 8/24/2015 - 1000 hrs.



Datum NAD 83

WAS 8/24/15 2300

119°13'W 119°12'W 119°11'W 119°10'W 119°9'W 119°8'W 119°7'W



V M

# Okanogan Complex WA-NES-1203

## IAP Map

8/25/2015

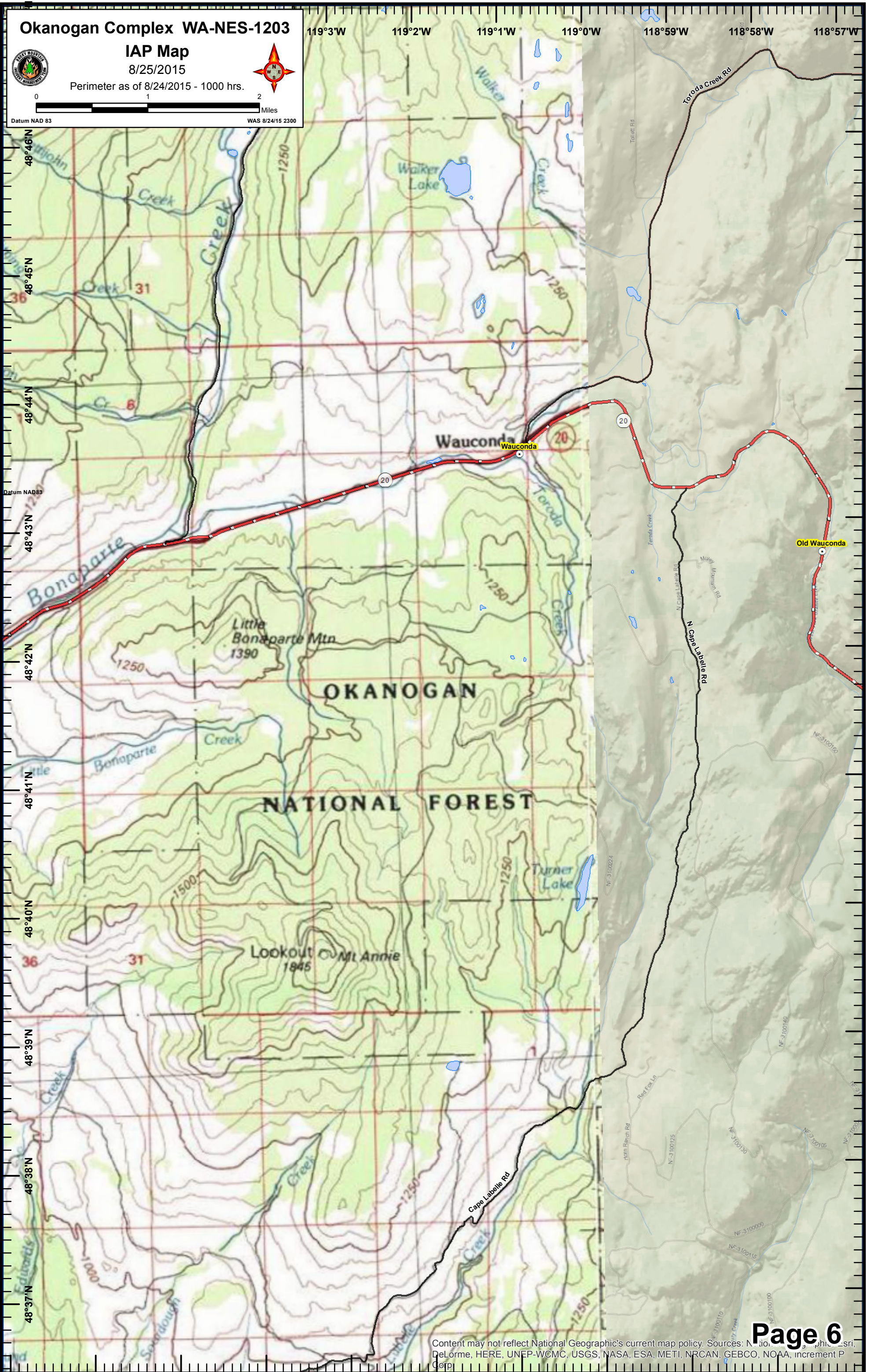
Perimeter as of 8/24/2015 - 1000 hrs.

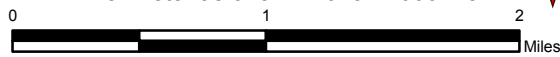


0 1 2 Miles

Datum NAD83

WAS 8/24/15 2300



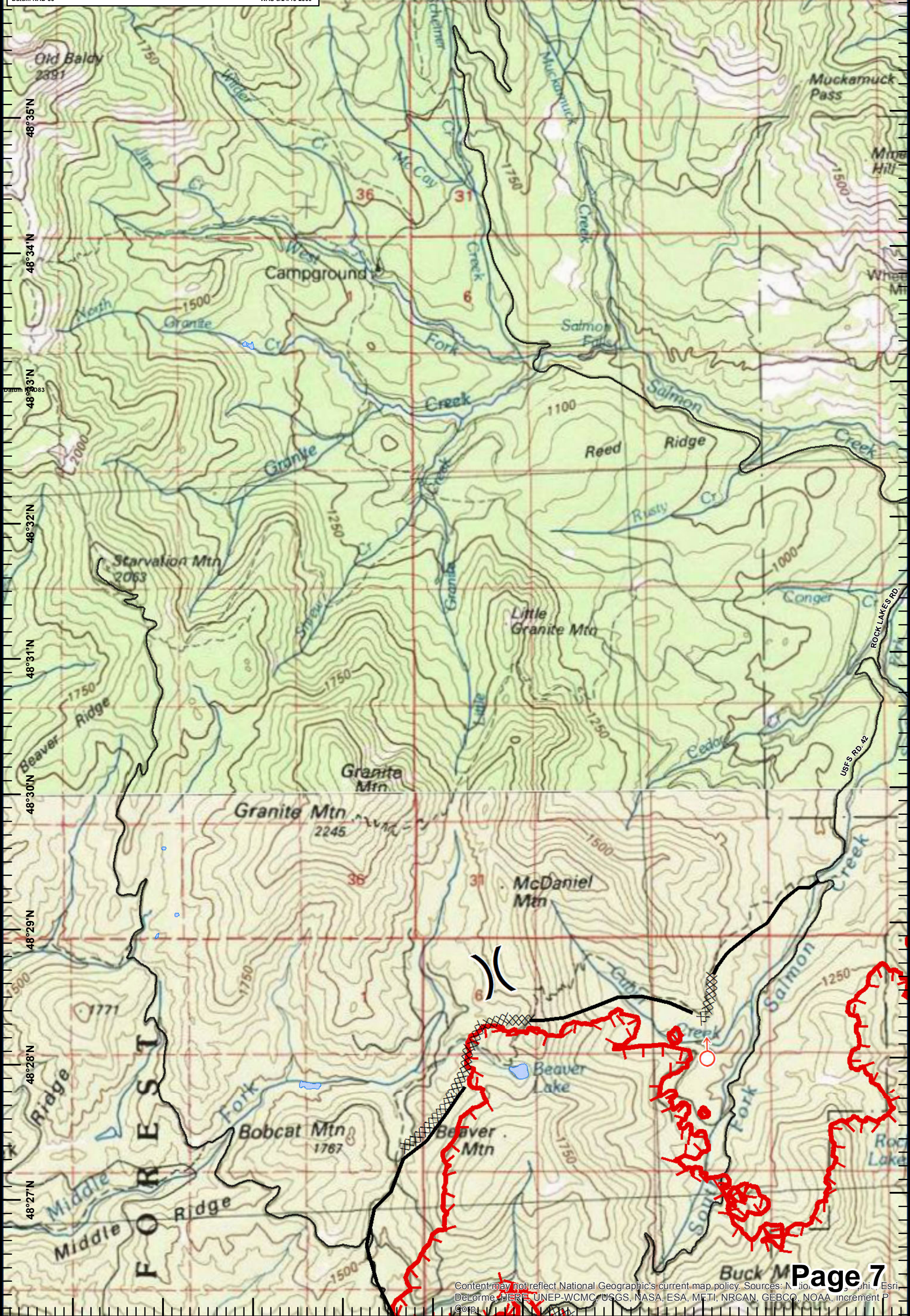


Datum NAD 83

WAS 8/24/15 2300

119°54'W 119°53'W 119°52'W 119°51'W 119°50'W 119°49'W 119°48'W

# Div A

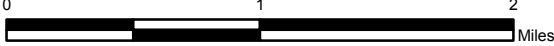


# Okanogan Complex WA-NES-1203

## IAP Map

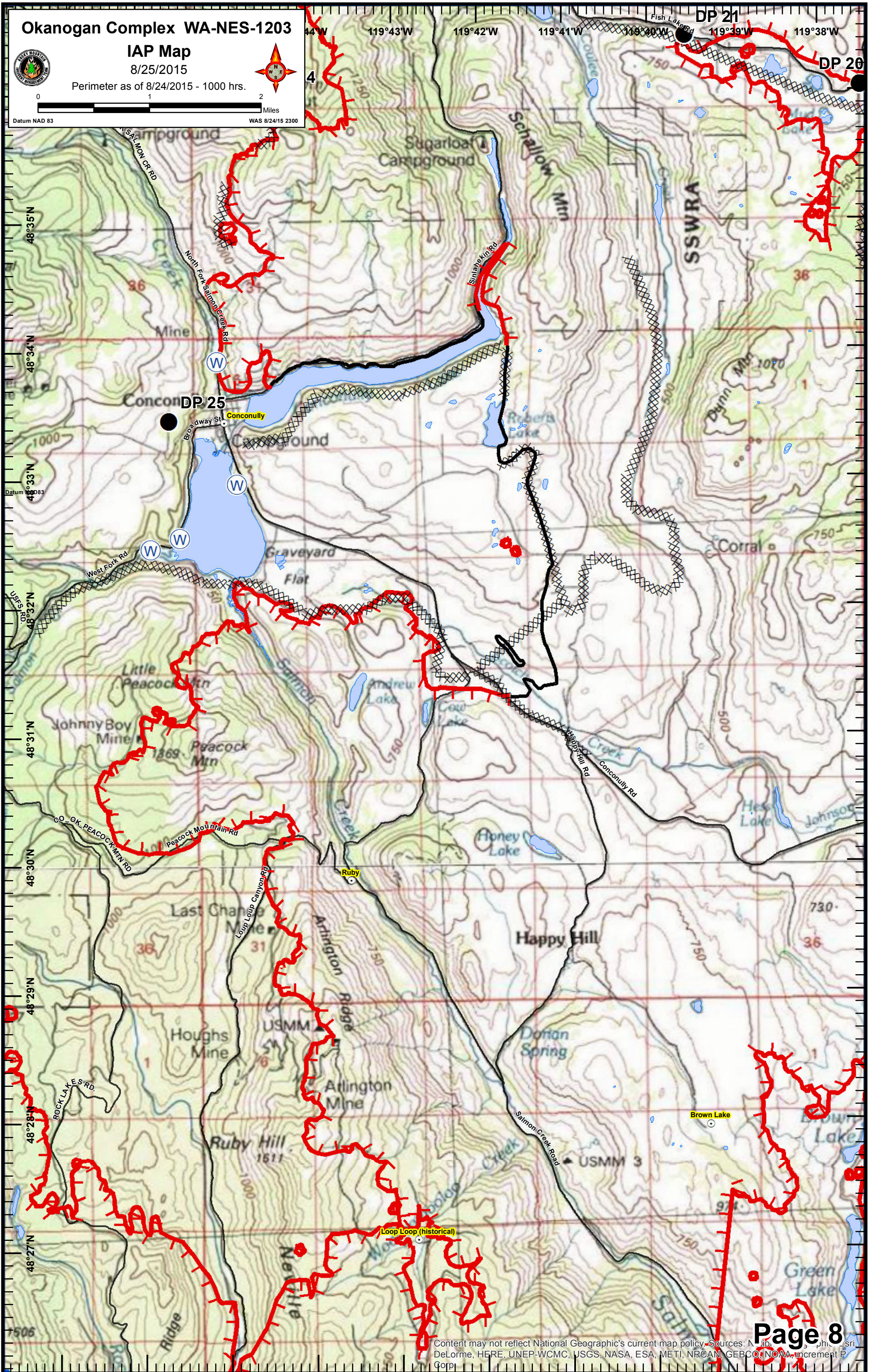
8/25/2015

Perimeter as of 8/24/2015 - 1000 hrs.



Datum NAD 83

WAS 8/24/15 2300



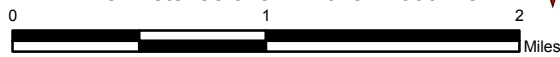


# Okanogan Complex WA-NES-1203

## IAP Map

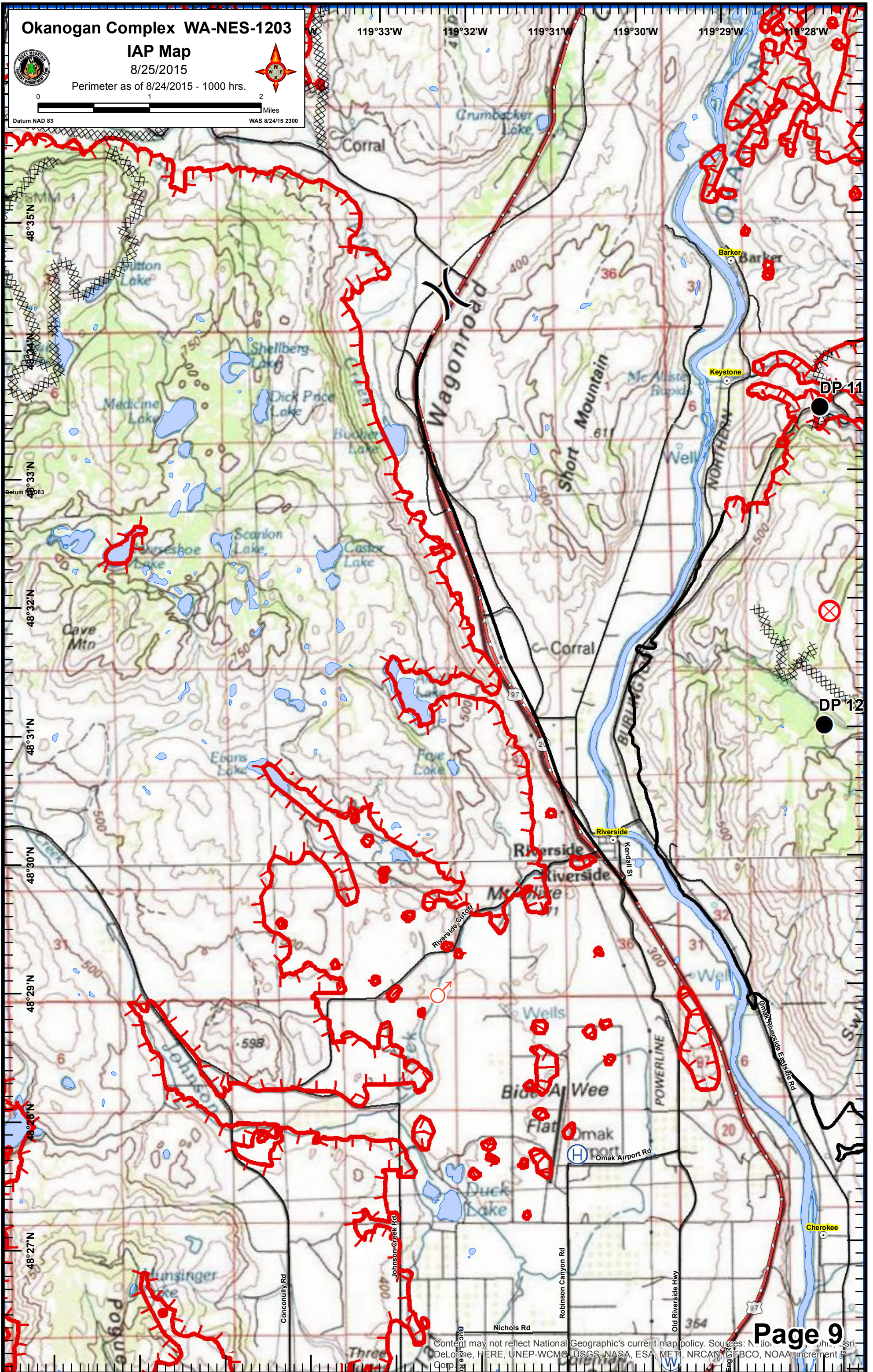
8/25/2015

Perimeter as of 8/24/2015 - 1000 hrs.



Datum NAD 83

WAS 8/24/15 2300



# Okanogan Complex WA-NES-1203

## IAP Map

8/25/2015

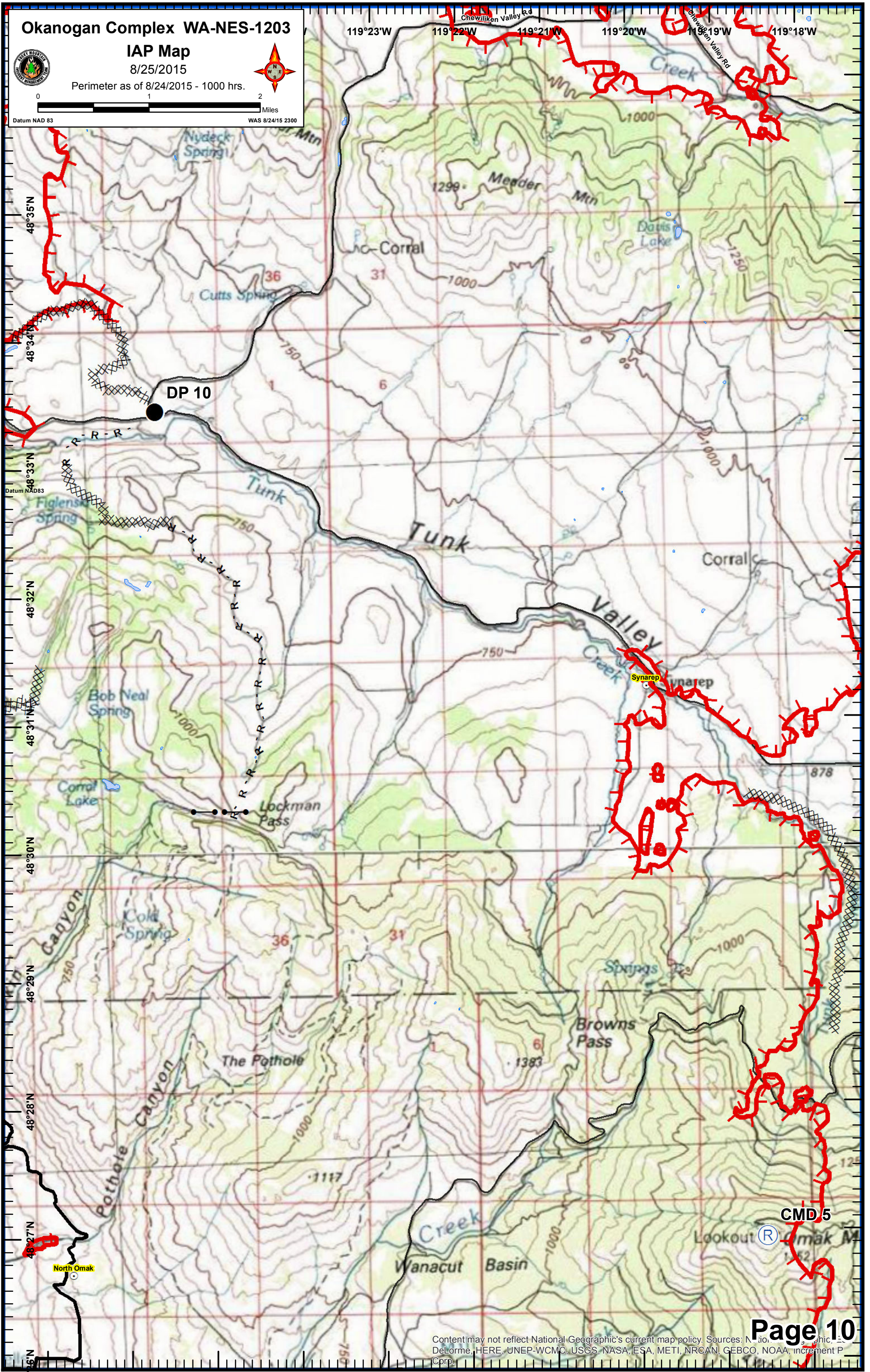
Perimeter as of 8/24/2015 - 1000 hrs.



0 1 2 Miles

Datum NAD 83

WAS 8/24/15 2300



Okanogan Complex WA-NES-1203

IAP Map

8/25/2015

Perimeter as of 8/24/2015 - 1000 hrs.

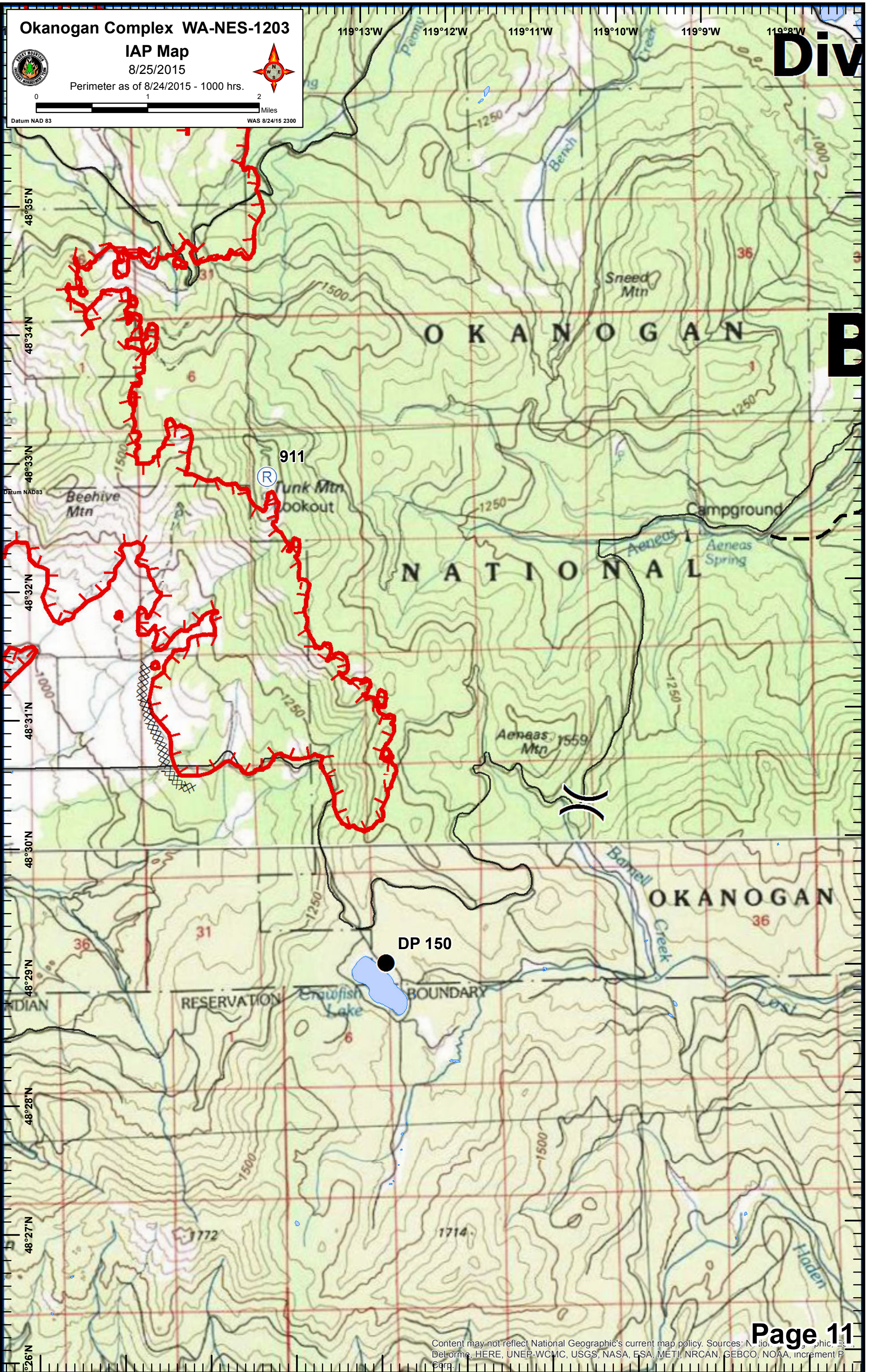


0 1 2 Miles

Datum NAD83

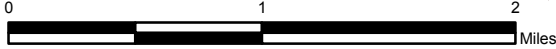
WAS 8/24/15 2300

Div



B

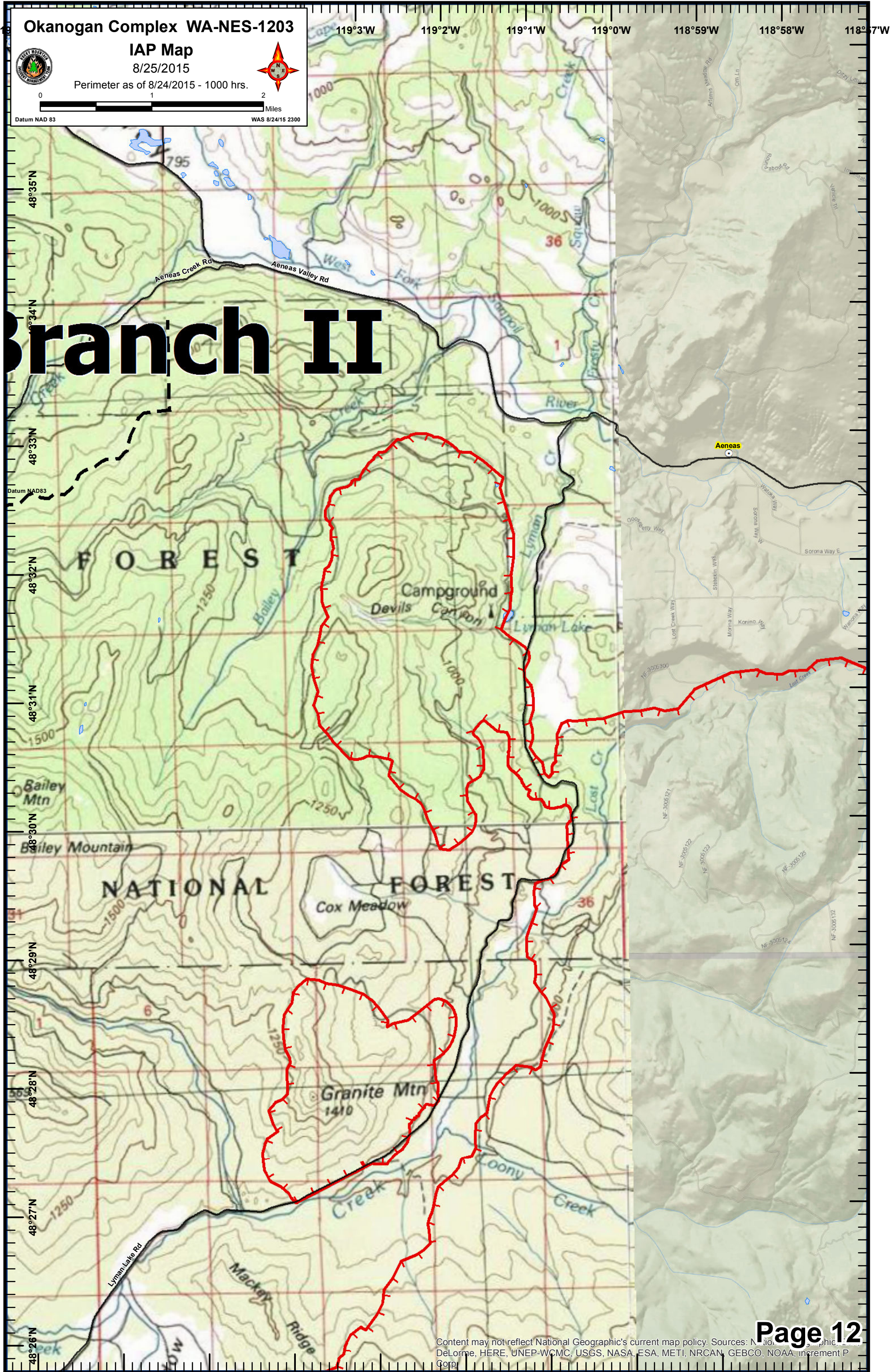
DP 150



Datum NAD83

WAS 8/24/15 2300

# Branch II

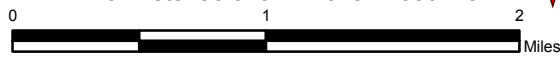


Okanogan Complex WA-NES-1203

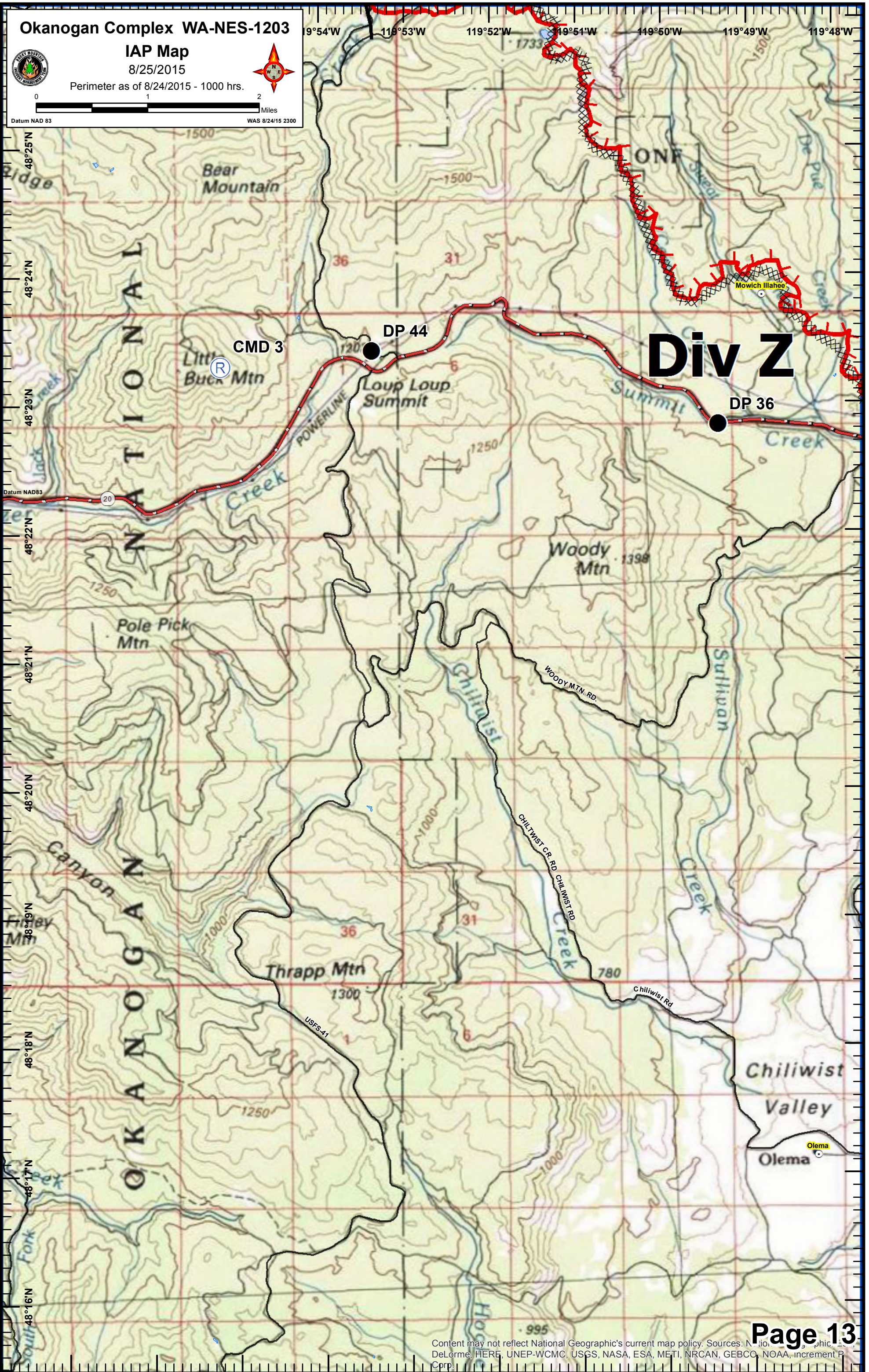
IAP Map

8/25/2015

Perimeter as of 8/24/2015 - 1000 hrs.



Datum NAD 83 WAS 8/24/15 2300



Div Z

# Okanogan Complex WA-NES-1203

## IAP Map

8/25/2015

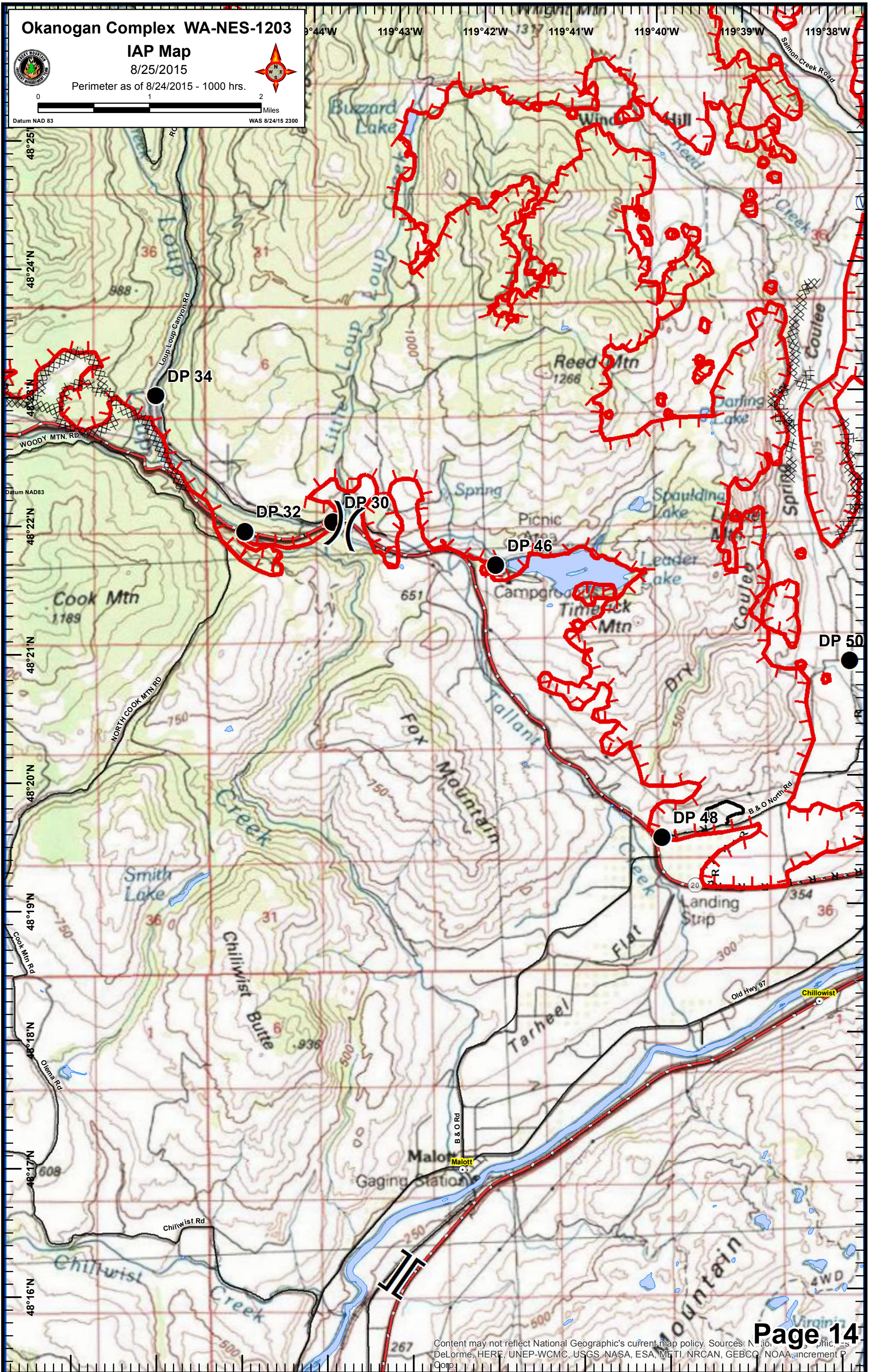
Perimeter as of 8/24/2015 - 1000 hrs.



0 1 2 Miles

Datum NAD 83

WAS 8/24/15 2300



Okanogan Complex WA-NES-1203

IAP Map

8/25/2015

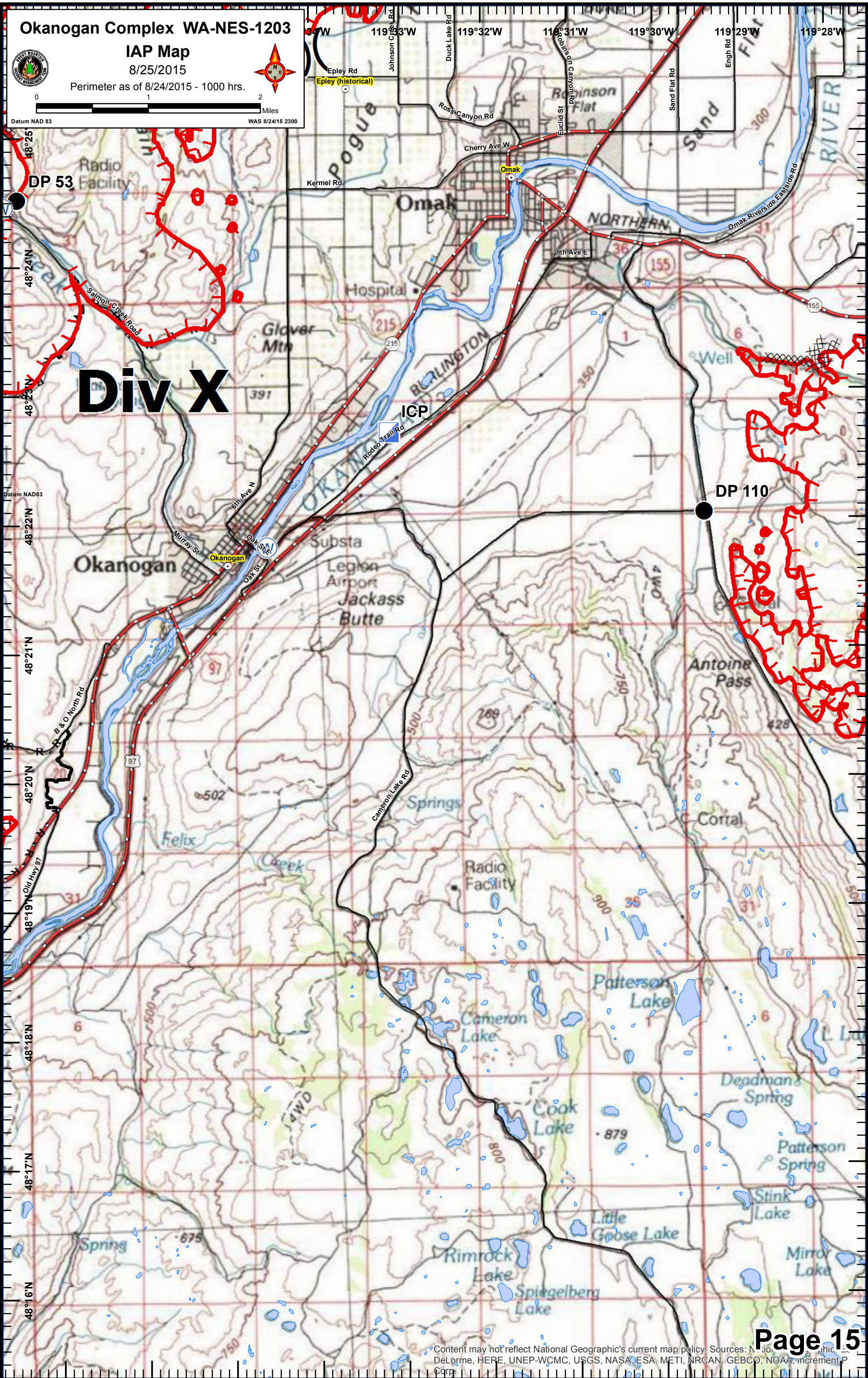
Perimeter as of 8/24/2015 - 1000 hrs.



Datum NAD 83

WAS 8/24/15 2300

Div X



# Okanogan Complex WA-NES-1203

## IAP Map

8/25/2015

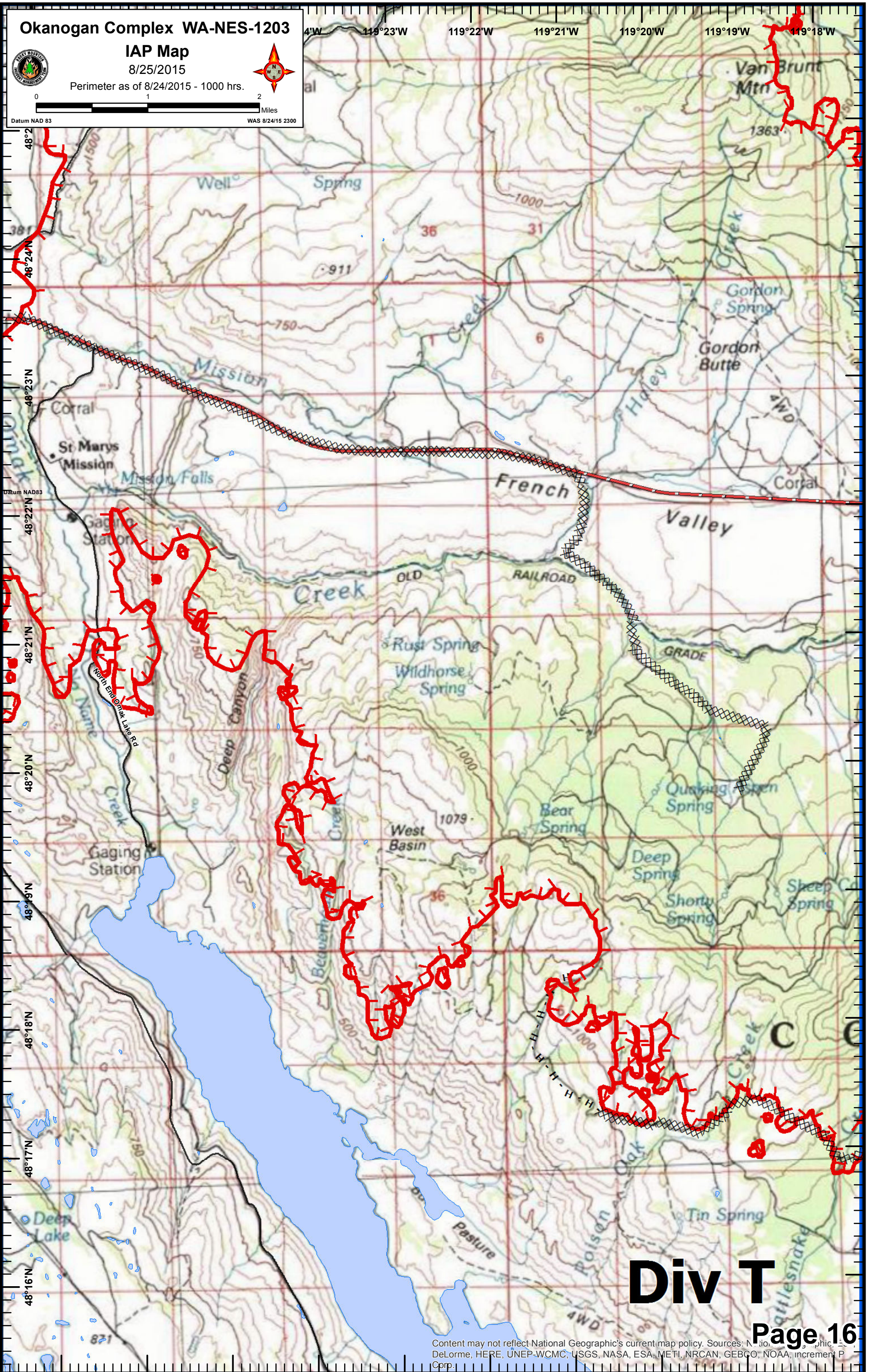
Perimeter as of 8/24/2015 - 1000 hrs.



0 1 2 Miles

Datum NAD 83

WAS 8/24/15 2300



# Div T

## Page 16

Content may not reflect National Geographic's current map policy. Sources: National Geographic, DeLorme, HERE, UNEP-WCMC, USGS, NASA, ESA, METI, NRCAN, GEBCO, NOAA, increment P Corp.

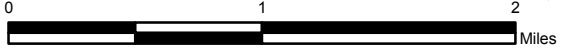


# Okanogan Complex WA-NES-1203

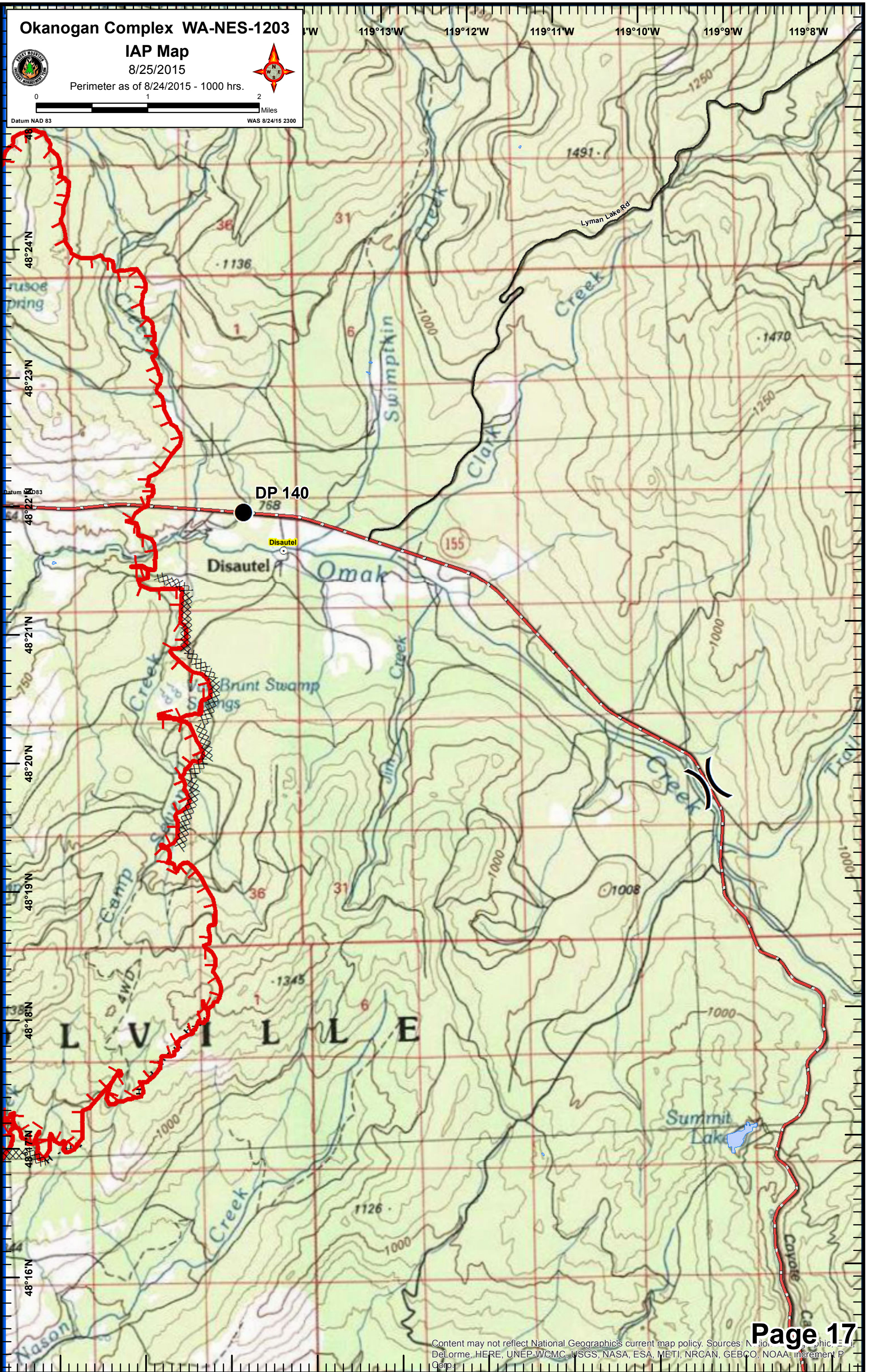
## IAP Map

8/25/2015

Perimeter as of 8/24/2015 - 1000 hrs.



Datum NAD 83 WAS 8/24/15 2300

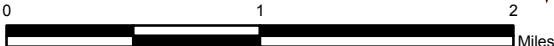


Okanogan Complex WA-NES-1203

IAP Map

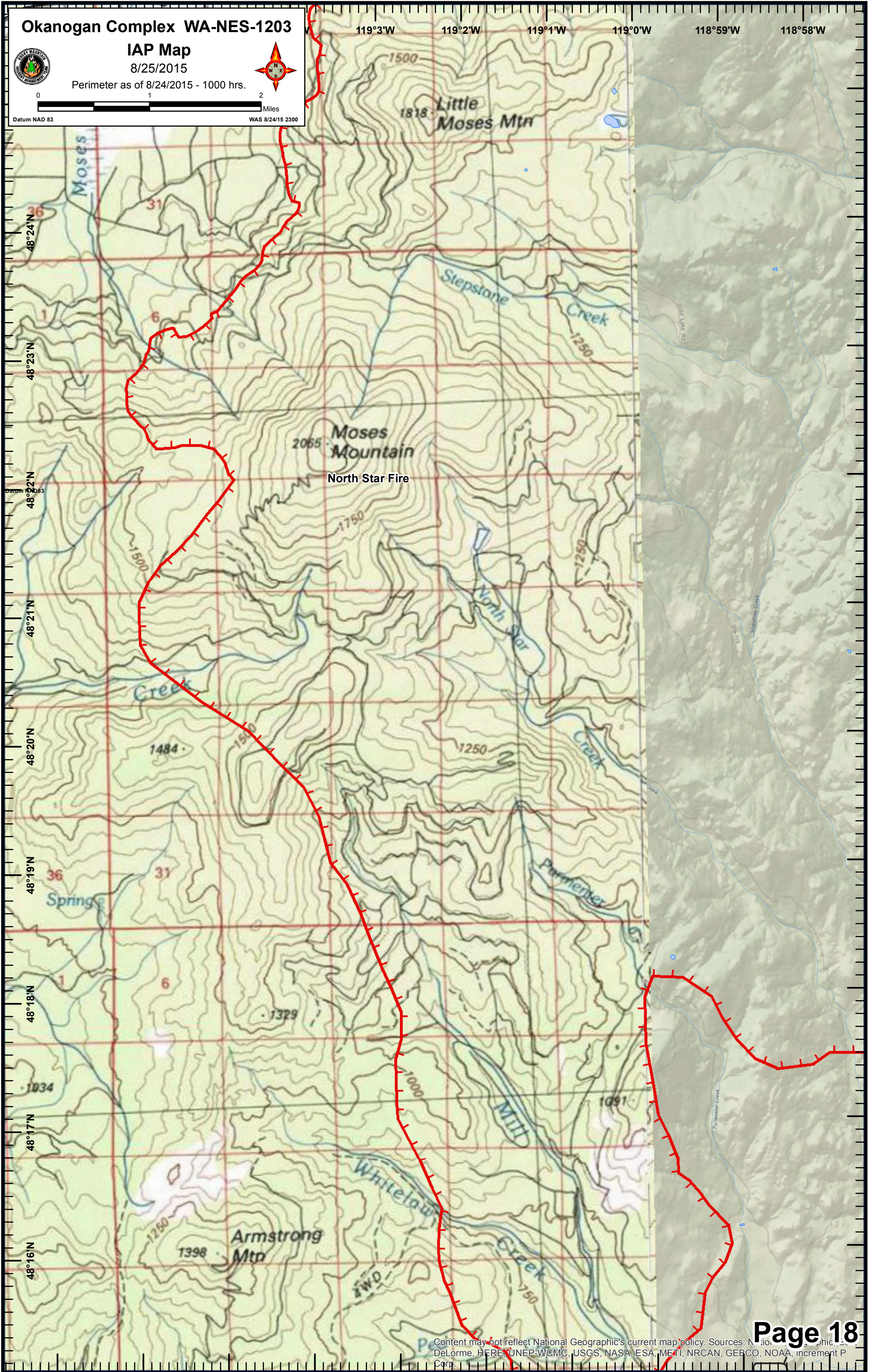
8/25/2015

Perimeter as of 8/24/2015 - 1000 hrs.



Datum NAD 83

WAS 8/24/15 2300



# Okanogan Complex WA-NES-1203

## IAP Map

8/25/2015

Perimeter as of 8/24/2015 - 1000 hrs.



0 1 2 Miles

Datum NAD 83

WAS 8/24/15 2300



Okanogan Complex WA-NES-1203

IAP Map

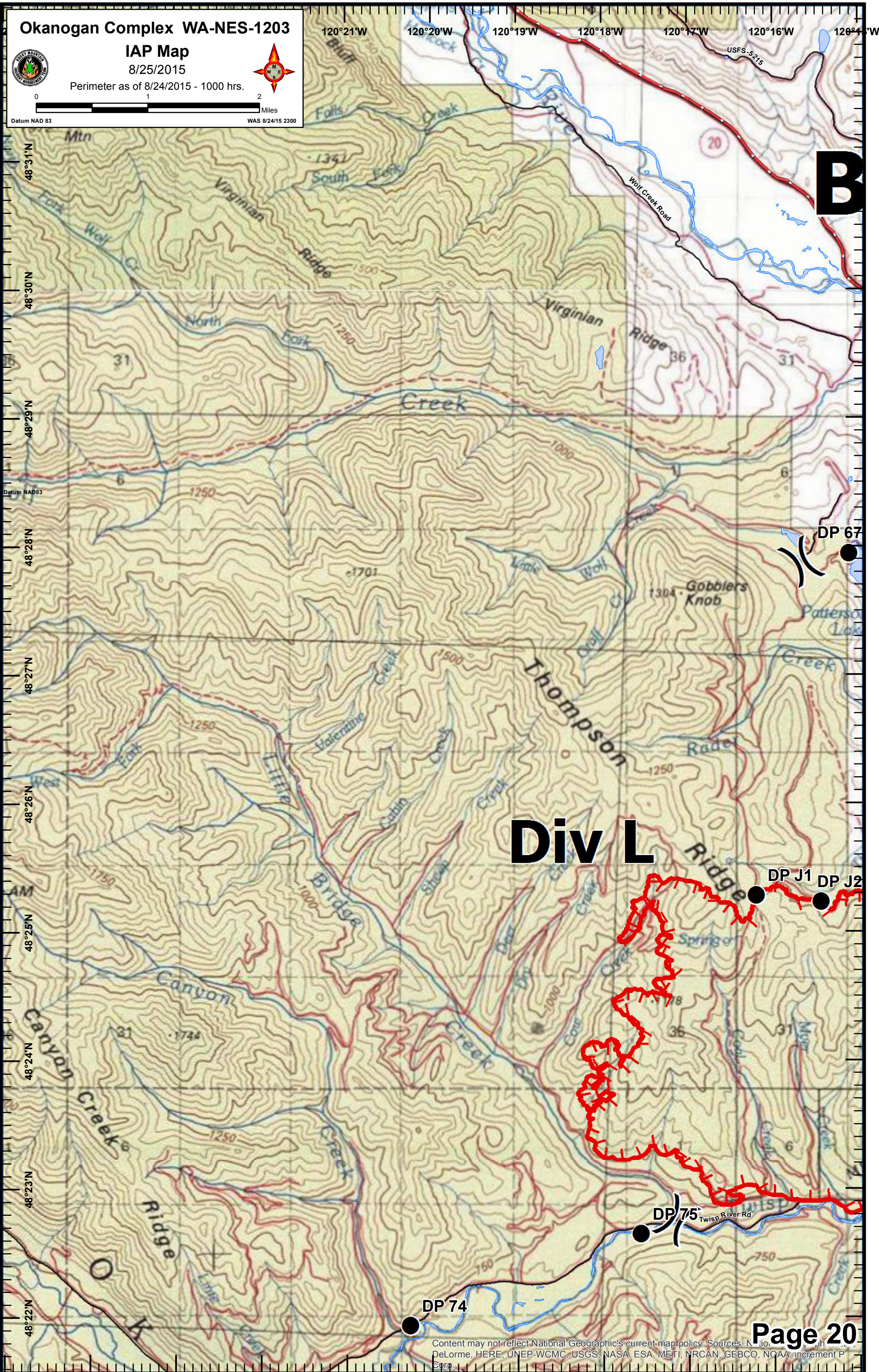
8/25/2015

Perimeter as of 8/24/2015 - 1000 hrs.



0 1 2 Miles

Datum NAD 83 WAS 8/24/15 2300



Div L

Content may not reflect National Geographic's current map policy. Sources: National Geographic, DeLorme, HERE, UNEP-WCMC, USGS, NASA, ESA, METI, NRCAN, GEBCO, NOAA, increment P Corp.



0 1 2 Miles

Datum NAD 83

WAS 8/24/15 2300

120°11'W 120°10'W 120°9'W 120°8'W 120°7'W 120°6'W 120°5'W

# ranch III

# Div J

# Div

