

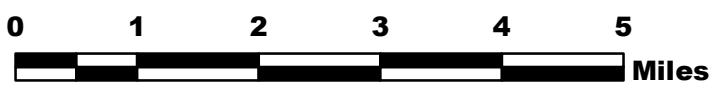
Okanogan Complex WA-NES-1203

Branch I Ops 8/27/15

Perimeter as of 8/26/15 0242 280,970 ac.



Datum NAD83



NB 8/26/15 2300

BRANCH

BRANCH I

Div C

Div B

Div A

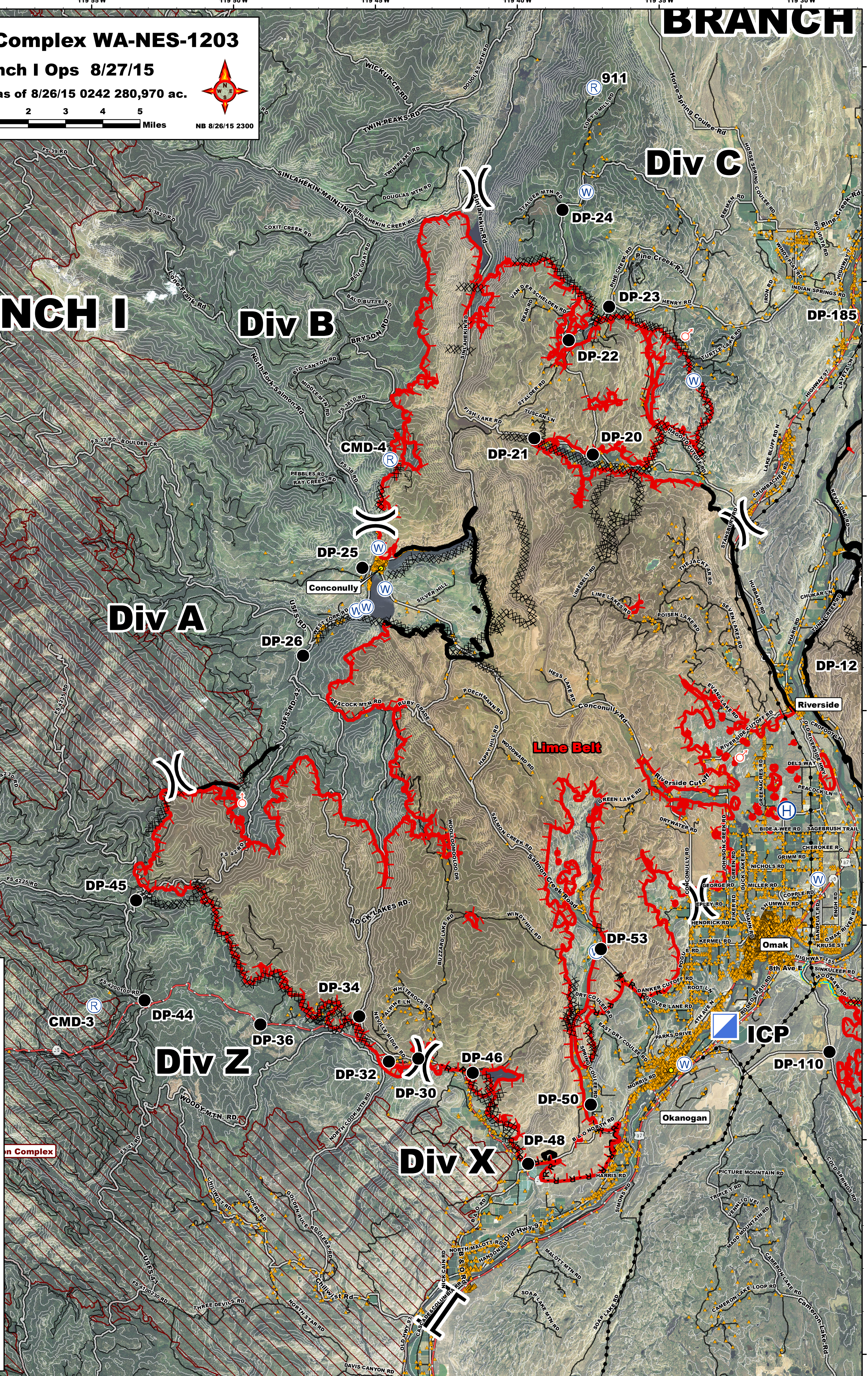
Div Z

Div X

Tripod Complex (2006)

ID	Type	Lat (DDMM)	Long (DDMM)
DP-1	Drop Point	119° 15.995' W	48° 59.624' N
DP-2	Drop Point	119° 18.206' W	48° 59.058' N
DP-3	Drop Point	119° 18.717' W	48° 56.167' N
DP-4	Drop Point	119° 18.562' W	48° 56.022' N
DP-5	Drop Point	119° 18.008' W	48° 56.21' N
DP-6	Drop Point	119° 18.008' W	48° 56.21' N
DP-10	Drop Point	119° 25.591' W	48° 33.445' N
DP-11	Drop Point	119° 27.902' W	48° 33.491' N
DP-12	Drop Point	119° 27.9' W	48° 31.076' N
DP-20	Drop Point	119° 37.511' W	48° 36.044' N
DP-21	Drop Point	119° 39.56' W	48° 36.44' N
DP-22	Drop Point	119° 38.308' W	48° 38.714' N
DP-23	Drop Point	119° 36.881' W	48° 39.484' N
DP-24	Drop Point	119° 36.881' W	48° 39.484' N
DP-25	Drop Point	119° 45.643' W	48° 33.459' N
DP-26	Drop Point	119° 47.753' W	48° 31.427' N
DP-30	Drop Point	119° 43.847' W	48° 22.013' N
DP-32	Drop Point	119° 44.876' W	48° 21.548' N
DP-34	Drop Point	119° 45.9' W	48° 23.008' N
DP-36	Drop Point	119° 49.361' W	48° 22.838' N
DP-44	Drop Point	119° 53.407' W	48° 23.425' N
DP-45	Drop Point	119° 53.673' W	48° 25.722' N
DP-46	Drop Point	119° 41.947' W	48° 21.666' N
DP-48	Drop Point	119° 40.044' W	48° 19.532' N
DP-50	Drop Point	119° 37.828' W	48° 20.895' N
DP-53	Drop Point	119° 37.417' W	48° 24.52' N
DP-59	Drop Point	119° 1.167' W	48° 30.997' N
DP-62	Staging Area	120° 10.944' W	48° 27.126' N
DP-65	Drop Point	120° 14.204' W	48° 26.062' N
DP-67	Drop Point	120° 15.118' W	48° 27.951' N
DP-69	Drop Point	120° 13.969' W	48° 29.433' N
DP-74	Drop Point	120° 20.252' W	48° 21.812' N
DP-75	Drop Point	120° 17.562' W	48° 22.651' N
DP-80	Drop Point	120° 11.914' W	48° 22.58' N
DP-82	Drop Point	120° 8.904' W	48° 22.184' N
DP-11	Drop Point	120° 16.207' W	48° 25.286' N
DP-12	Drop Point	120° 15.45' W	48° 25.237' N
DP-13	Drop Point	120° 14.719' W	48° 25.351' N
DP-14	Drop Point	120° 14.723' W	48° 25.546' N
DP-15	Drop Point	120° 14.203' W	48° 25.525' N
DP-16	Drop Point	120° 14.040' W	48° 25.843' N
DP-17	Drop Point	120° 13.159' W	48° 25.072' N
DP-110	Drop Point	119° 29.464' W	48° 22.059' N
DP-120	Drop Point	119° 17.606' W	48° 13.813' N
DP-130	Drop Point	119° 15.224' W	48° 19.924' N
DP-135	Drop Point	119° 12.677' W	48° 20.938' N
DP-140	Drop Point	119° 14.703' W	48° 21.929' N
DP-150	Drop Point	119° 12.875' W	48° 29.071' N
DP-165	Drop Point	119° 10.374' W	48° 38.324' N
DP-170	Drop Point	119° 45.867' W	48° 39.086' N
DP-175	Drop Point	119° 19.795' W	48° 39.499' N
DP-185	Drop Point	119° 27.847' W	48° 38.887' N
Valley-Helibase	Helibase	120° 10.658' W	48° 28.155' N
Helibase	Helibase	119° 38.855' W	48° 27.699' N
Safety Zone	Safety Zone	119° 11.129' W	48° 30.083' N
SA-Jones	Staging Area	119° 8.562' W	48° 37.232' N
Water Source	Water Source	119° 25.138' W	48° 56.488' N
Water Source	Water Source	119° 44.85' W	48° 32.569' N
Water Source	Water Source	119° 45.867' W	48° 32.647' N
Water Source	Water Source	119° 45.074' W	48° 33.926' N
Water Source	Water Source	119° 45.526' W	48° 32.55' N
Water Source	Water Source	119° 34.545' W	48° 21.816' N
Water Source	Water Source	119° 29.789' W	48° 26.085' N
Water Source	Water Source	119° 37.979' W	48° 24.461' N
Water Source	Water Source	119° 33.94' W	48° 37.741' N
Water Source	Water Source	119° 37.633' W	48° 42.188' N

- Spot Fire
- Safety Zone
- Drop Point
- Camp
- Staging Area
- Repeater
- Water Source
- Helibase
- Incident Command Post
- Transmission Lines
- Completed Line
- Completed Dozer Line
- Planned Fire Line
- Uncontrolled Fire Edge
- H - Hand Line
- R - Road as Completed Line
- E911 Structures
- Recent Fires
- Omak Creek - No Drafting, No Retardant
- 200' Contours
- Fuel Treatments



48°45'N
48°40'N
48°35'N
48°30'N
48°25'N
48°20'N
48°15'N

119°30'W
119°35'W
119°40'W
119°45'W
119°50'W
119°55'W
120°0'W