

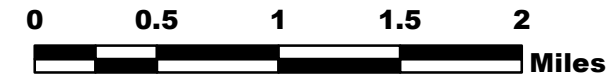
Okanogan Complex WA-NES-1203

Division P 8/27/15

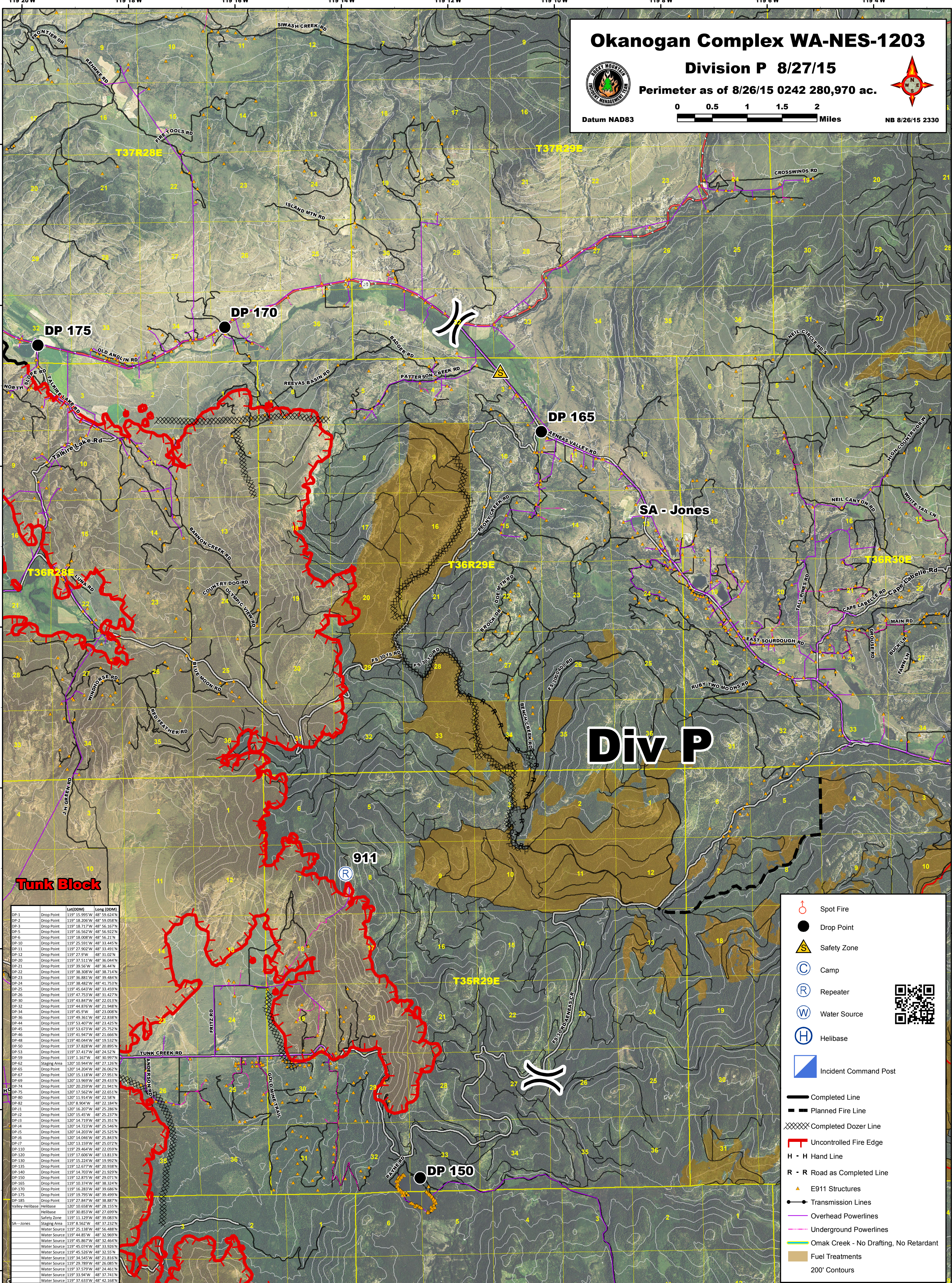
Perimeter as of 8/26/15 0242 280,970 ac.



Datum NAD83



NB 8/26/15 2330



Tunk Block

Div P

| ID | Type | Lat (DDM) | Long (DDM) |
|-----------------|--------------|----------------|---------------|
| DP-1 | Drop Point | 119° 15.95' W | 48° 59.624' N |
| DP-2 | Drop Point | 119° 18.296' W | 48° 59.058' N |
| DP-3 | Drop Point | 119° 18.71' W | 48° 56.167' N |
| DP-5 | Drop Point | 119° 16.56' W | 48° 56.922' N |
| DP-6 | Drop Point | 119° 18.008' W | 48° 56.21' N |
| DP-10 | Drop Point | 119° 25.59' W | 48° 33.405' N |
| DP-11 | Drop Point | 119° 27.92' W | 48° 33.491' N |
| DP-12 | Drop Point | 119° 27.9' W | 48° 31.02' N |
| DP-20 | Drop Point | 119° 37.511' W | 48° 36.044' N |
| DP-21 | Drop Point | 119° 39.56' W | 48° 36.44' N |
| DP-22 | Drop Point | 119° 38.38' W | 48° 39.484' N |
| DP-23 | Drop Point | 119° 36.881' W | 48° 41.753' N |
| DP-24 | Drop Point | 119° 38.48' W | 48° 41.753' N |
| DP-25 | Drop Point | 119° 45.643' W | 48° 33.459' N |
| DP-26 | Drop Point | 119° 47.75' W | 48° 31.427' N |
| DP-30 | Drop Point | 119° 43.847' W | 48° 22.023' N |
| DP-32 | Drop Point | 119° 44.876' W | 48° 21.948' N |
| DP-34 | Drop Point | 119° 45.9' W | 48° 23.008' N |
| DP-36 | Drop Point | 119° 49.36' W | 48° 22.838' N |
| DP-44 | Drop Point | 119° 53.807' W | 48° 23.425' N |
| DP-45 | Drop Point | 119° 53.673' W | 48° 25.752' N |
| DP-46 | Drop Point | 119° 41.947' W | 48° 21.666' N |
| DP-48 | Drop Point | 119° 40.044' W | 48° 19.532' N |
| DP-50 | Drop Point | 119° 37.828' W | 48° 20.895' N |
| DP-53 | Drop Point | 119° 36.528' W | 48° 24.52' N |
| DP-59 | Drop Point | 119° 1.167' W | 48° 30.997' N |
| DP-62 | Staging Area | 120° 10.944' W | 48° 27.126' N |
| DP-65 | Drop Point | 120° 14.204' W | 48° 26.062' N |
| DP-67 | Drop Point | 120° 15.118' W | 48° 27.951' N |
| DP-69 | Drop Point | 120° 13.969' W | 48° 29.433' N |
| DP-74 | Drop Point | 120° 20.259' W | 48° 21.941' N |
| DP-75 | Drop Point | 120° 17.562' W | 48° 22.651' N |
| DP-80 | Drop Point | 120° 11.914' W | 48° 22.58' N |
| DP-82 | Drop Point | 120° 9.904' W | 48° 22.184' N |
| DP-91 | Drop Point | 120° 16.207' W | 48° 25.286' N |
| DP-92 | Drop Point | 120° 15.45' W | 48° 25.237' N |
| DP-93 | Drop Point | 120° 14.719' W | 48° 25.351' N |
| DP-94 | Drop Point | 120° 14.713' W | 48° 25.546' N |
| DP-95 | Drop Point | 120° 14.203' W | 48° 25.525' N |
| DP-96 | Drop Point | 120° 14.046' W | 48° 25.843' N |
| DP-97 | Drop Point | 120° 13.159' W | 48° 25.072' N |
| DP-110 | Drop Point | 119° 29.464' W | 48° 26.059' N |
| DP-120 | Drop Point | 119° 17.606' W | 48° 23.813' N |
| DP-130 | Drop Point | 119° 15.224' W | 48° 19.992' N |
| DP-135 | Drop Point | 119° 12.677' W | 48° 20.938' N |
| DP-140 | Drop Point | 119° 14.703' W | 48° 21.929' N |
| DP-150 | Drop Point | 119° 12.875' W | 48° 29.072' N |
| DP-165 | Drop Point | 119° 10.374' W | 48° 38.324' N |
| DP-170 | Drop Point | 119° 16.283' W | 48° 39.686' N |
| DP-175 | Drop Point | 119° 19.795' W | 48° 39.499' N |
| DP-185 | Drop Point | 119° 27.847' W | 48° 38.887' N |
| Valley Helibase | Helibase | 120° 10.658' W | 48° 28.155' N |
| Helibase | Helibase | 119° 30.853' W | 48° 27.699' N |
| Safety Zone | Safety Zone | 119° 11.129' W | 48° 39.083' N |
| SA - Jones | Staging Area | 119° 8.562' W | 48° 37.232' N |
| Water Source | Water Source | 119° 25.187' W | 48° 56.488' N |
| Water Source | Water Source | 119° 44.85' W | 48° 32.969' N |
| Water Source | Water Source | 119° 45.867' W | 48° 32.464' N |
| Water Source | Water Source | 119° 45.074' W | 48° 33.926' N |
| Water Source | Water Source | 119° 45.526' W | 48° 32.557' N |
| Water Source | Water Source | 119° 44.703' W | 48° 21.816' N |
| Water Source | Water Source | 119° 29.789' W | 48° 26.085' N |
| Water Source | Water Source | 119° 37.579' W | 48° 24.461' N |
| Water Source | Water Source | 119° 33.94' W | 48° 37.741' N |
| Water Source | Water Source | 119° 37.633' W | 48° 42.168' N |

- Spot Fire
- Drop Point
- Safety Zone
- Camp
- Repeater
- Water Source
- Helibase
- Incident Command Post
- Completed Line
- Planned Fire Line
- Completed Dozer Line
- Uncontrolled Fire Edge
- H - H Hand Line
- R - R Road as Completed Line
- E911 Structures
- Transmission Lines
- Overhead Powerlines
- Underground Powerlines
- Omak Creek - No Drafting, No Retardant
- Fuel Treatments
- 200' Contours

