

Okanogan Complex WA-NES-1203

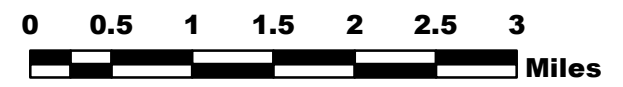


Division T 8/27/15

Perimeter as of 8/26/15 0242 280,970 ac.



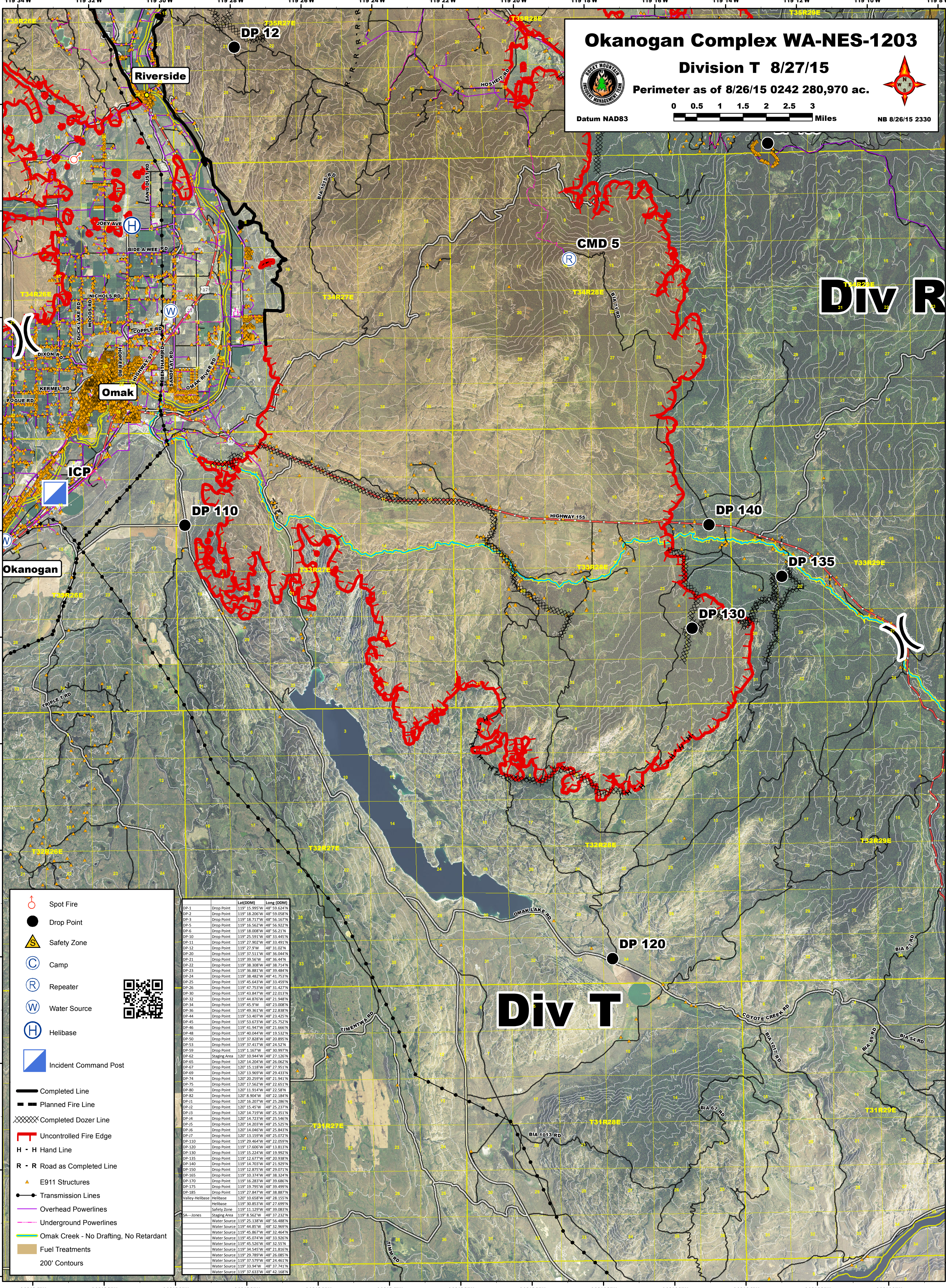
Datum NAD83



NB 8/26/15 2330

Div R

Div T



ID	Type	Lat(DDM)	Long(DDM)
DP-1	Drop Point	119° 15.995'W	48° 59.624'N
DP-2	Drop Point	119° 18.206'W	48° 59.059'N
DP-3	Drop Point	119° 18.717'W	48° 56.167'N
DP-5	Drop Point	119° 16.562'W	48° 56.922'N
DP-6	Drop Point	119° 18.008'W	48° 56.217'N
DP-10	Drop Point	119° 25.591'W	48° 34.445'N
DP-11	Drop Point	119° 27.902'W	48° 33.491'N
DP-12	Drop Point	119° 27.9'W	48° 31.02'N
DP-20	Drop Point	119° 37.511'W	48° 36.044'N
DP-21	Drop Point	119° 39.50'W	48° 36.44'N
DP-22	Drop Point	119° 38.206'W	48° 34.427'N
DP-23	Drop Point	119° 36.881'W	48° 39.484'N
DP-24	Drop Point	119° 38.482'W	48° 41.753'N
DP-25	Drop Point	119° 45.643'W	48° 33.459'N
DP-26	Drop Point	119° 47.753'W	48° 34.427'N
DP-30	Drop Point	119° 43.847'W	48° 22.013'N
DP-32	Drop Point	119° 44.876'W	48° 21.948'N
DP-34	Drop Point	119° 45.9'W	48° 21.008'N
DP-36	Drop Point	119° 49.361'W	48° 22.838'N
DP-44	Drop Point	119° 53.607'W	48° 23.423'N
DP-45	Drop Point	119° 53.673'W	48° 25.752'N
DP-46	Drop Point	119° 41.947'W	48° 21.666'N
DP-48	Drop Point	119° 40.044'W	48° 19.532'N
DP-50	Drop Point	119° 37.826'W	48° 22.059'N
DP-53	Drop Point	119° 37.417'W	48° 24.521'N
DP-59	Drop Point	119° 1.167'W	48° 30.997'N
DP-62	Staging Area	120° 10.944'W	48° 27.126'N
DP-65	Drop Point	120° 14.204'W	48° 26.062'N
DP-67	Drop Point	120° 15.118'W	48° 27.951'N
DP-69	Drop Point	120° 13.969'W	48° 29.433'N
DP-74	Drop Point	120° 20.259'W	48° 21.941'N
DP-75	Drop Point	120° 17.562'W	48° 22.651'N
DP-80	Drop Point	120° 11.914'W	48° 22.587'N
DP-82	Drop Point	120° 8.904'W	48° 22.184'N
DP-91	Drop Point	120° 16.207'W	48° 25.286'N
DP-92	Drop Point	120° 15.45'W	48° 25.237'N
DP-93	Drop Point	120° 14.719'W	48° 25.351'N
DP-94	Drop Point	120° 14.723'W	48° 25.546'N
DP-95	Drop Point	120° 14.203'W	48° 25.525'N
DP-96	Drop Point	120° 14.046'W	48° 25.843'N
DP-97	Drop Point	120° 13.159'W	48° 25.072'N
DP-110	Drop Point	119° 29.464'W	48° 22.059'N
DP-120	Drop Point	119° 17.606'W	48° 18.813'N
DP-130	Drop Point	119° 15.224'W	48° 19.992'N
DP-135	Drop Point	119° 12.677'W	48° 20.938'N
DP-140	Drop Point	119° 14.703'W	48° 21.929'N
DP-150	Drop Point	119° 12.975'W	48° 20.071'N
DP-165	Drop Point	119° 10.374'W	48° 38.324'N
DP-170	Drop Point	119° 16.283'W	48° 39.686'N
DP-175	Drop Point	119° 19.795'W	48° 39.499'N
DP-185	Drop Point	119° 27.847'W	48° 38.807'N
SA-Jones	Staging Area	119° 8.562'W	48° 37.232'N
Water Source	Water Source	119° 25.135'W	48° 35.468'N
Water Source	Water Source	119° 44.85'W	48° 32.969'N
Water Source	Water Source	119° 45.867'W	48° 32.464'N
Water Source	Water Source	119° 45.074'W	48° 33.926'N
Water Source	Water Source	119° 45.526'W	48° 32.35'N
Water Source	Water Source	119° 34.845'W	48° 21.826'N
Water Source	Water Source	119° 29.789'W	48° 26.085'N
Water Source	Water Source	119° 37.579'W	48° 24.461'N
Water Source	Water Source	119° 33.94'W	48° 37.741'N
Water Source	Water Source	119° 37.633'W	48° 42.168'N

- Spot Fire
- Drop Point
- Safety Zone
- Camp
- Repeater
- Water Source
- Helibase
- Incident Command Post
- Completed Line
- Planned Fire Line
- Completed Dozer Line
- Uncontrolled Fire Edge
- H - H Hand Line
- R - R Road as Completed Line
- E911 Structures
- Transmission Lines
- Overhead Powerlines
- Underground Powerlines
- Omak Creek - No Drafting, No Retardant
- Fuel Treatments
- 200' Contours