

# Okanogon Complex WA-NES-1203

## Branch II Ops 8/27/15

Perimeter as of 8/27/15 1115 292,512 ac.



Datum NAD83

0 1 2 3 4 5 Miles

NB 8/27/15 1600

# BRANCH II

### Night Shift Div C

### Div M

### Div P

### Div R

### Div T

### P-23

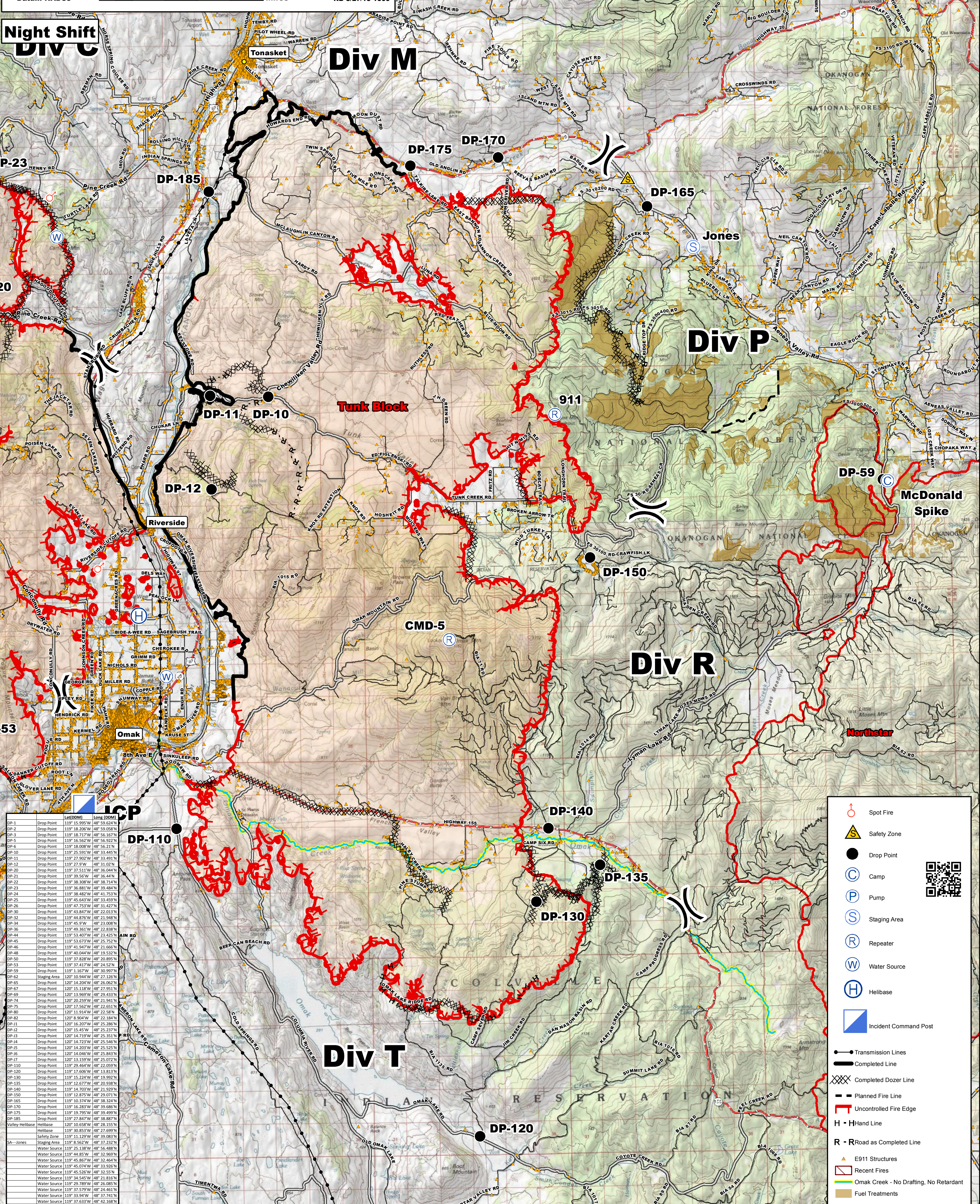
### 20

### 53

### LCP

### SA-Jones

Drop Point	Lat (DDM)	Long (DDM)
DP-1	119° 15.995' W	48° 59.624' N
DP-2	119° 16.296' W	48° 59.058' N
DP-3	119° 18.717' W	48° 56.167' N
DP-5	119° 16.562' W	48° 56.922' N
DP-6	119° 18.008' W	48° 56.211' N
DP-10	119° 25.591' W	48° 33.485' N
DP-11	119° 27.951' W	48° 33.491' N
DP-12	119° 27.91' W	48° 31.02' N
DP-20	119° 37.511' W	48° 36.044' N
DP-21	119° 39.56' W	48° 36.44' N
DP-22	119° 38.38' W	48° 38.714' N
DP-23	119° 36.881' W	48° 39.484' N
DP-24	119° 38.482' W	48° 41.753' N
DP-25	119° 45.643' W	48° 33.459' N
DP-26	119° 47.753' W	48° 31.427' N
DP-30	119° 43.827' W	48° 23.023' N
DP-32	119° 44.876' W	48° 21.948' N
DP-34	119° 45.9' W	48° 23.008' N
DP-36	119° 49.36' W	48° 22.838' N
DP-44	119° 53.807' W	48° 23.155' N
DP-45	119° 53.673' W	48° 25.752' N
DP-46	119° 41.947' W	48° 21.666' N
DP-48	119° 40.044' W	48° 19.532' N
DP-50	119° 37.828' W	48° 20.895' N
DP-53	119° 37.417' W	48° 24.521' N
DP-59	119° 1.167' W	48° 30.997' N
DP-62	120° 10.944' W	48° 27.126' N
DP-65	120° 14.204' W	48° 26.062' N
DP-67	120° 15.18' W	48° 27.951' N
DP-69	120° 13.969' W	48° 29.433' N
DP-74	120° 20.259' W	48° 21.941' N
DP-75	120° 17.562' W	48° 22.651' N
DP-80	120° 11.914' W	48° 22.587' N
DP-82	120° 9.807' W	48° 22.184' N
DP-91	120° 16.207' W	48° 25.286' N
DP-92	120° 15.45' W	48° 25.237' N
DP-93	120° 14.719' W	48° 25.351' N
DP-94	120° 14.73' W	48° 23.816' N
DP-95	120° 14.203' W	48° 25.525' N
DP-96	120° 14.046' W	48° 25.843' N
DP-97	120° 13.159' W	48° 25.072' N
DP-110	119° 29.464' W	48° 22.059' N
DP-120	119° 17.626' W	48° 13.813' N
DP-130	119° 15.224' W	48° 19.992' N
DP-135	119° 12.677' W	48° 20.938' N
DP-140	119° 14.703' W	48° 21.929' N
DP-150	119° 13.907' W	48° 23.546' N
DP-165	119° 10.374' W	48° 38.324' N
DP-170	119° 16.283' W	48° 39.686' N
DP-175	119° 19.795' W	48° 39.499' N
DP-185	119° 27.847' W	48° 38.887' N
DP-185 Helibase	120° 10.828' W	48° 23.155' N
DP-185 Helibase	119° 30.853' W	48° 27.699' N
SA-Jones Staging Area	119° 11.129' W	48° 39.083' N
SA-Jones Water Source	119° 8.562' W	48° 37.232' N
SA-Jones Water Source	119° 25.18' W	48° 56.488' N
SA-Jones Water Source	119° 44.85' W	48° 32.969' N
SA-Jones Water Source	119° 45.867' W	48° 32.464' N
SA-Jones Water Source	119° 45.074' W	48° 33.926' N
SA-Jones Water Source	119° 45.536' W	48° 32.575' N
SA-Jones Water Source	119° 54.53' W	48° 23.816' N
SA-Jones Water Source	119° 29.789' W	48° 26.085' N
SA-Jones Water Source	119° 37.579' W	48° 24.461' N
SA-Jones Water Source	119° 33.94' W	48° 37.741' N
SA-Jones Water Source	119° 37.633' W	48° 42.168' N



- Spot Fire
- Safety Zone
- Drop Point
- Camp
- Pump
- Staging Area
- Repeater
- Water Source
- Helibase
- Incident Command Post
- Transmission Lines
- Completed Line
- Completed Dozer Line
- Planned Fire Line
- Uncontrolled Fire Edge
- H - Hand Line
- R - R Road as Completed Line
- E911 Structures
- Recent Fires
- Omak Creek - No Drafting, No Retardant
- Fuel Treatments