

Okanogan Complex

Working Air Ops Map

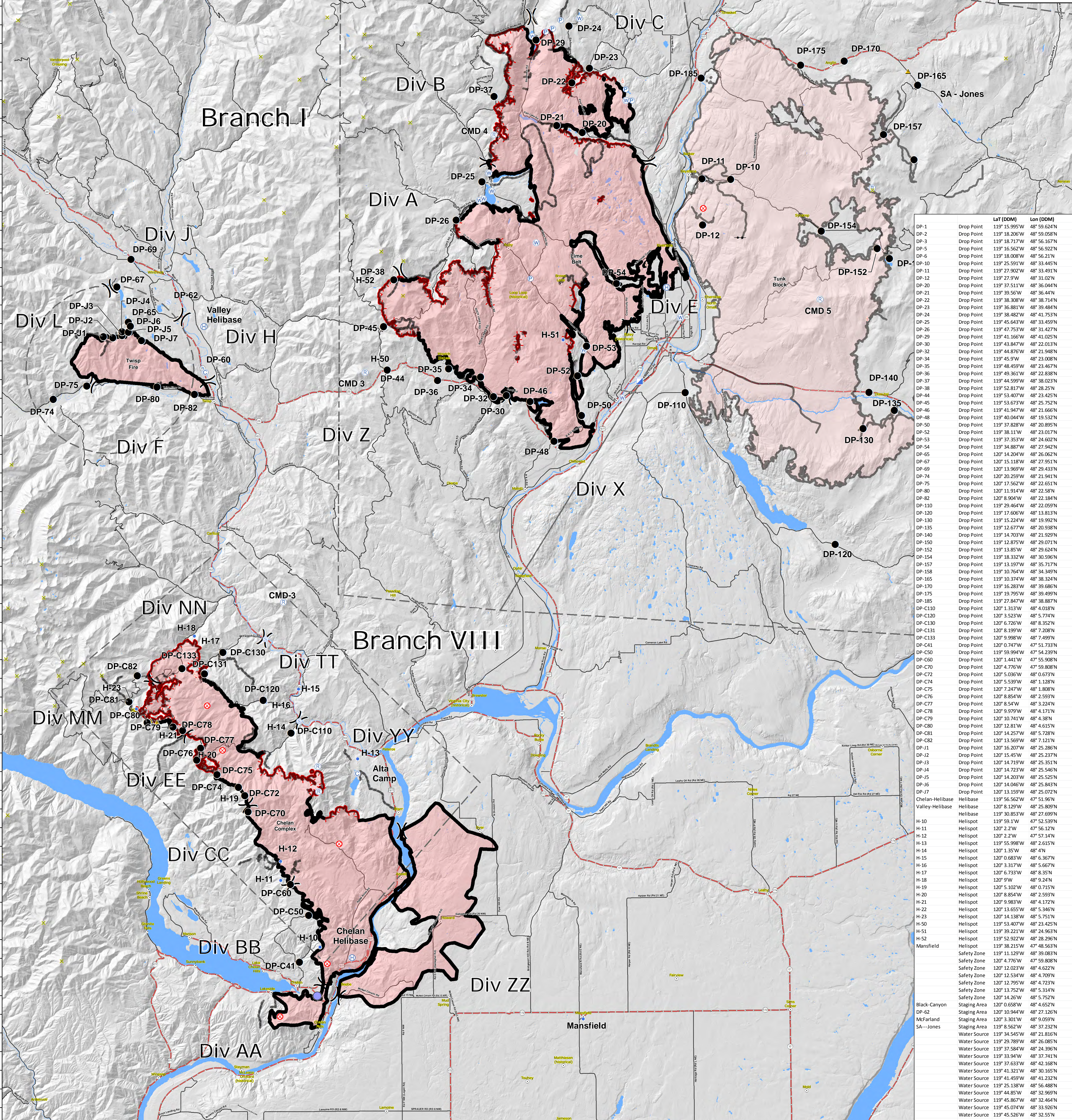
WA-NES-1203
9/3/2015

Perimeter as of 9/2/2015 @ 2130

2 Miles

Valley(Twisp)-Helibase	Helibase	Lon (DDM)	Lat (DDM)
Helipad-1	Valley (Twisp)Helibase	120°08.366	48°25.170
Helipad-2	Valley (Twisp)Helibase	120°08.339	48°25.146
Helipad-3	Valley (Twisp)Helibase	120°08.320	48°25.125
Helipad-4	Valley (Twisp)Helibase	120°08.338	48°25.189
Helipad-5	Valley (Twisp)Helibase	120°08.311	48°25.169
Helipad-6	Valley (Twisp)Helibase	120°08.283	48°25.128
Helipad-7	Valley (Twisp)Helibase	120°08.286	48°25.191
Helipad-8	Valley (Twisp)Helibase	120°08.223	48°25.175
Helipad-9	Valley (Twisp)Helibase	120°08.238	48°25.132
Omak Helibase	Helibase	119° 30.853'W	48° 27.699'N
Helipad-2	Omak Helibase	119°31.014	48°27.744
Helipad-3	Omak Helibase	119°31.024	48°27.774
Helipad-4	Omak Helibase	119°31.024	48°27.804
Helipad-5	Omak Helibase	119°31.018	48°27.834
Helipad-6	Omak Helibase	119°31.008	48°27.859
Helipad-7	Omak Helibase	119°31.003	48°27.888
Helipad-8	Omak Helibase	119°30.995	48°27.914
Helipad-9	Omak Helibase	119°30.988	48°27.941
Helipad-10	Omak Helibase	119°30.981	48°27.969
Helipad-11	Omak Helibase	119°30.974	48°27.999
Helipad-12	Omak Helibase	119°30.967	48°28.028
Helipad-13	Omak Helibase	119°30.960	48°28.056
Helipad-14	Omak Helibase	119°30.953	48°28.082
Helipad-15	Omak Helibase	119°30.947	48°28.110
Helipad-16	Omak Helibase	119°30.939	48°28.139
Helipad-17	Omak Helibase	119°30.933	48°28.165
Chelan Helibase	Helibase	119° 56.562'W	47° 51.96'N

- Unknown
- Camp
- Drop Point
- Fire Origin
- Gate
- Helibase
- Helispot
- Incident Command Post
- Pump
- Repeater
- Safety Zone
- Spot Fire
- Staging Area
- Water Source
- Other
- Uncontrolled Fire Edge
- Completed Dozer Line
- Completed Line
- Hand Line
- Town & City Locations
- Summits >= 6000ft



ID	Type	Lat (DDM)	Lon (DDM)
DP-1	Drop Point	119° 15.995'W	48° 29.624'N
DP-2	Drop Point	119° 18.236'W	48° 29.558'N
DP-3	Drop Point	119° 18.717'W	48° 26.167'N
DP-5	Drop Point	119° 16.562'W	48° 56.922'N
DP-6	Drop Point	119° 18.008'W	48° 56.211'N
DP-10	Drop Point	119° 25.591'W	48° 33.445'N
DP-11	Drop Point	119° 27.902'W	48° 33.491'N
DP-12	Drop Point	119° 27.9'W	48° 31.02'N
DP-20	Drop Point	119° 37.511'W	48° 36.044'N
DP-21	Drop Point	119° 39.56'W	48° 36.44'N
DP-22	Drop Point	119° 36.388'W	48° 38.714'N
DP-23	Drop Point	119° 36.881'W	48° 39.484'N
DP-24	Drop Point	119° 38.482'W	48° 41.753'N
DP-25	Drop Point	119° 45.643'W	48° 34.59'N
DP-26	Drop Point	119° 47.753'W	48° 31.427'N
DP-29	Drop Point	119° 41.166'W	48° 41.025'N
DP-30	Drop Point	119° 43.847'W	48° 22.013'N
DP-32	Drop Point	119° 44.876'W	48° 21.948'N
DP-34	Drop Point	119° 45.9'W	48° 23.008'N
DP-35	Drop Point	119° 48.459'W	48° 23.467'N
DP-36	Drop Point	119° 46.365'W	48° 22.838'N
DP-37	Drop Point	119° 46.599'W	48° 38.023'N
DP-38	Drop Point	119° 52.817'W	48° 28.25'N
DP-44	Drop Point	119° 53.407'W	48° 23.425'N
DP-45	Drop Point	119° 53.673'W	48° 25.752'N
DP-46	Drop Point	119° 41.947'W	48° 21.666'N
DP-48	Drop Point	119° 40.044'W	48° 19.532'N
DP-50	Drop Point	119° 37.828'W	48° 20.895'N
DP-52	Drop Point	119° 38.11'W	48° 23.017'N
DP-53	Drop Point	119° 37.353'W	48° 24.602'N
DP-54	Drop Point	119° 34.887'W	48° 27.942'N
DP-65	Drop Point	120° 14.204'W	48° 26.062'N
DP-67	Drop Point	120° 15.118'W	48° 27.951'N
DP-69	Drop Point	120° 13.969'W	48° 29.433'N
DP-74	Drop Point	120° 20.259'W	48° 21.941'N
DP-75	Drop Point	120° 17.562'W	48° 22.651'N
DP-80	Drop Point	120° 11.914'W	48° 22.58'N
DP-82	Drop Point	120° 8.904'W	48° 22.184'N
DP-110	Drop Point	119° 29.464'W	48° 22.059'N
DP-120	Drop Point	119° 17.606'W	48° 13.813'N
DP-130	Drop Point	119° 15.224'W	48° 19.927'N
DP-135	Drop Point	119° 12.677'W	48° 20.938'N
DP-140	Drop Point	119° 14.703'W	48° 21.529'N
DP-150	Drop Point	119° 12.875'W	48° 29.071'N
DP-152	Drop Point	119° 13.85'W	48° 29.624'N
DP-154	Drop Point	119° 18.332'W	48° 30.596'N
DP-157	Drop Point	119° 13.197'W	48° 35.717'N
DP-158	Drop Point	119° 10.764'W	48° 34.349'N
DP-165	Drop Point	119° 10.374'W	48° 38.324'N
DP-170	Drop Point	119° 16.283'W	48° 39.685'N
DP-175	Drop Point	119° 19.795'W	48° 39.499'N
DP-185	Drop Point	119° 27.847'W	48° 38.887'N
DP-C110	Drop Point	120° 1.313'W	48° 4.018'N
DP-C120	Drop Point	120° 3.523'W	48° 5.774'N
DP-C130	Drop Point	120° 6.726'W	48° 8.352'N
DP-C131	Drop Point	120° 8.199'W	48° 7.208'N
DP-C133	Drop Point	120° 9.998'W	48° 7.499'N
DP-C41	Drop Point	120° 0.747'W	47° 51.733'N
DP-C50	Drop Point	119° 59.994'W	47° 54.259'N
DP-C60	Drop Point	120° 1.441'W	48° 5.588'N
DP-C70	Drop Point	120° 4.776'W	47° 59.808'N
DP-C72	Drop Point	120° 5.036'W	48° 0.673'N
DP-C75	Drop Point	120° 7.247'W	48° 1.128'N
DP-C76	Drop Point	120° 8.854'W	48° 2.593'N
DP-C77	Drop Point	120° 8.54'W	48° 3.224'N
DP-C78	Drop Point	120° 9.979'W	48° 4.171'N
DP-C79	Drop Point	120° 10.74'W	48° 4.38'N
DP-C80	Drop Point	120° 12.81'W	48° 4.615'N
DP-C81	Drop Point	120° 14.257'W	48° 5.728'N
DP-C82	Drop Point	120° 13.569'W	48° 7.121'N
DP-J1	Drop Point	120° 16.207'W	48° 25.286'N
DP-J2	Drop Point	120° 15.45'W	48° 25.237'N
DP-J3	Drop Point	120° 14.719'W	48° 25.351'N
DP-J4	Drop Point	120° 14.723'W	48° 25.546'N
DP-J5	Drop Point	120° 14.203'W	48° 25.525'N
DP-J6	Drop Point	120° 14.046'W	48° 25.843'N
DP-J7	Drop Point	120° 13.159'W	48° 25.072'N
Chelan-Helibase	Helibase	119° 56.562'W	47° 51.96'N
Valley-Helibase	Helibase	119° 8.21'W	48° 25.82'N
H-10	Helispot	119° 59.1'W	47° 52.539'N
H-11	Helispot	120° 2.2'W	47° 57.14'N
H-12	Helispot	120° 2.2'W	47° 57.14'N
H-13	Helispot	119° 55.998'W	48° 2.615'N
H-14	Helispot	120° 1.35'W	48° 4'N
H-15	Helispot	120° 0.683'W	48° 6.367'N
H-16	Helispot	120° 3.317'W	48° 5.667'N
H-17	Helispot	120° 6.733'W	48° 5.35'N
H-18	Helispot	120° 9'W	48° 9.24'N
H-19	Helispot	120° 5.102'W	48° 0.715'N
H-20	Helispot	120° 8.854'W	48° 2.593'N
H-21	Helispot	120° 9.983'W	48° 4.172'N
H-22	Helispot	120° 13.655'W	48° 5.346'N
H-23	Helispot	120° 14.138'W	48° 5.751'N
H-50	Helispot	119° 53.407'W	48° 23.425'N
H-51	Helispot	119° 39.221'W	48° 24.963'N
H-52	Helispot	119° 52.922'W	48° 28.296'N
Mansfield	Safety Zone	119° 36.215'W	47° 55.63'N
Mansfield	Safety Zone	119° 11.129'W	47° 59.808'N
Mansfield	Safety Zone	120° 4.776'W	47° 59.808'N
Mansfield	Safety Zone	120° 12.023'W	48° 4.622'N
Mansfield	Safety Zone	120° 12.534'W	48° 4.709'N
Mansfield	Safety Zone	120° 12.795'W	48° 4.723'N
Mansfield	Safety Zone	120° 13.752'W	48° 5.314'N
Mansfield	Safety Zone	120° 14.26'W	48° 5.752'N
Black-Canyon	Staging Area	120° 0.658'W	48° 4.652'N
DP-62	Staging Area	120° 12.138'W	48° 27.126'N
McFarland	Staging Area	120° 3.301'W	48° 9.059'N
SA-Jones	Staging Area	119° 8.562'W	48° 37.232'N
Water Source	Water Source	119° 34.545'W	48° 21.816'N
Water Source	Water Source	119° 29.789'W	48° 26.085'N
Water Source	Water Source	119° 37.584'W	48° 24.396'N
Water Source	Water Source	119° 33.94'W	48° 37.741'N
Water Source	Water Source	119° 37.633'W	48° 42.168'N
Water Source	Water Source	119° 41.321'W	48° 30.165'N
Water Source	Water Source	119° 41.459'W	48° 41.232'N
Water Source	Water Source	119° 42.138'W	48° 55.488'N
Water Source	Water Source	119° 44.85'W	48° 32.969'N
Water Source	Water Source	119° 45.867'W	48° 32.464'N
Water Source	Water Source	119° 45.074'W	48° 33.926'N
Water Source	Water Source	119° 45.526'W	48° 32.55'N
Water Source	Water Source	120° 8.155'W	48° 7.291'N