

# Okanogan Complex





WA-NES 1203






IAP Map






9/4/2015

NAD 83

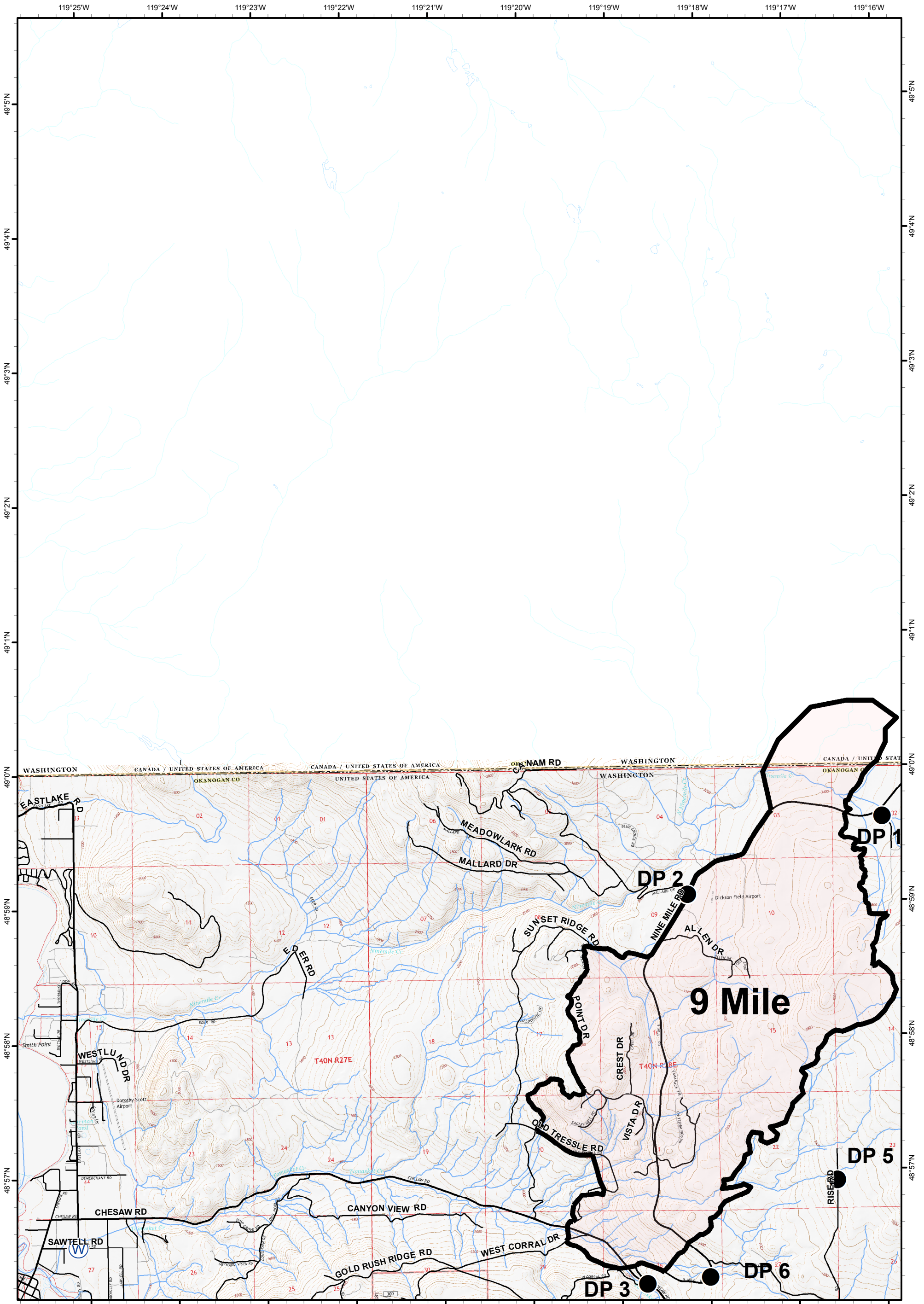


-  ICP
-  Drop Point
-  Helispot
-  Helibase
-  Camp

-  Pump
-  Repeater
-  Staging Area
-  Water Source
-  Safety Zone

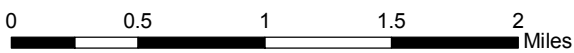
-  Uncontrolled Fire Edge
-  Completed Dozer Line
-  Completed Line
-  Hand Line
-  Road as Completed Line





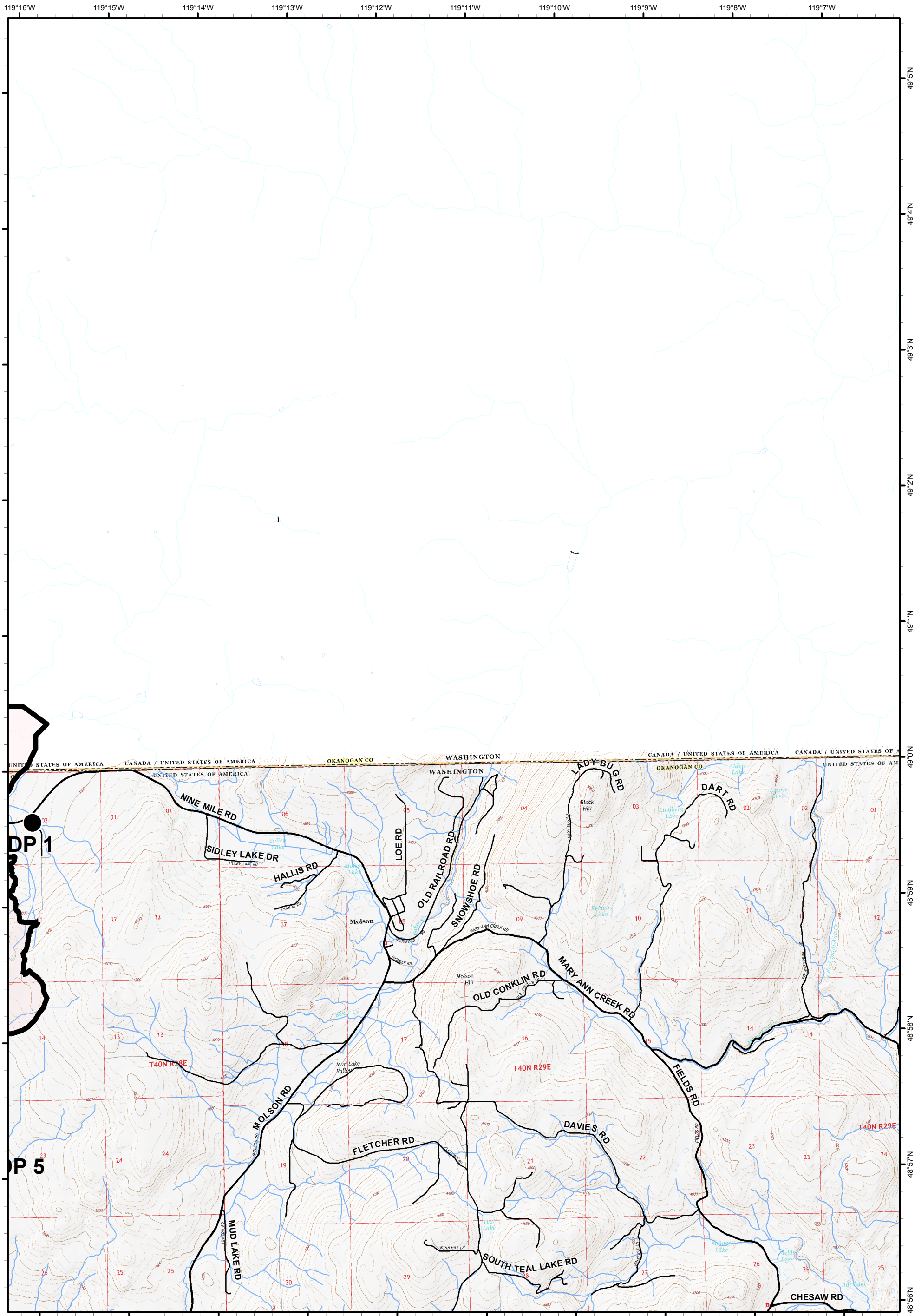
# Okanogan Complex

WA-NES 1203  
IAP Map  
9/4/2015 Day



- |  |              |  |                      |  |                        |
|--|--------------|--|----------------------|--|------------------------|
|  | ICP          |  | Water Source         |  | Pump                   |
|  | Drop Point   |  | Safety Zone          |  | Uncontrolled Fire Edge |
|  | Helispot     |  | Completed Dozer Line |  | Completed Line         |
|  | Helibase     |  | Hand Line            |  | Road as Completed Line |
|  | Camp         |  |                      |  |                        |
|  | Repeater     |  |                      |  |                        |
|  | Staging Area |  |                      |  |                        |





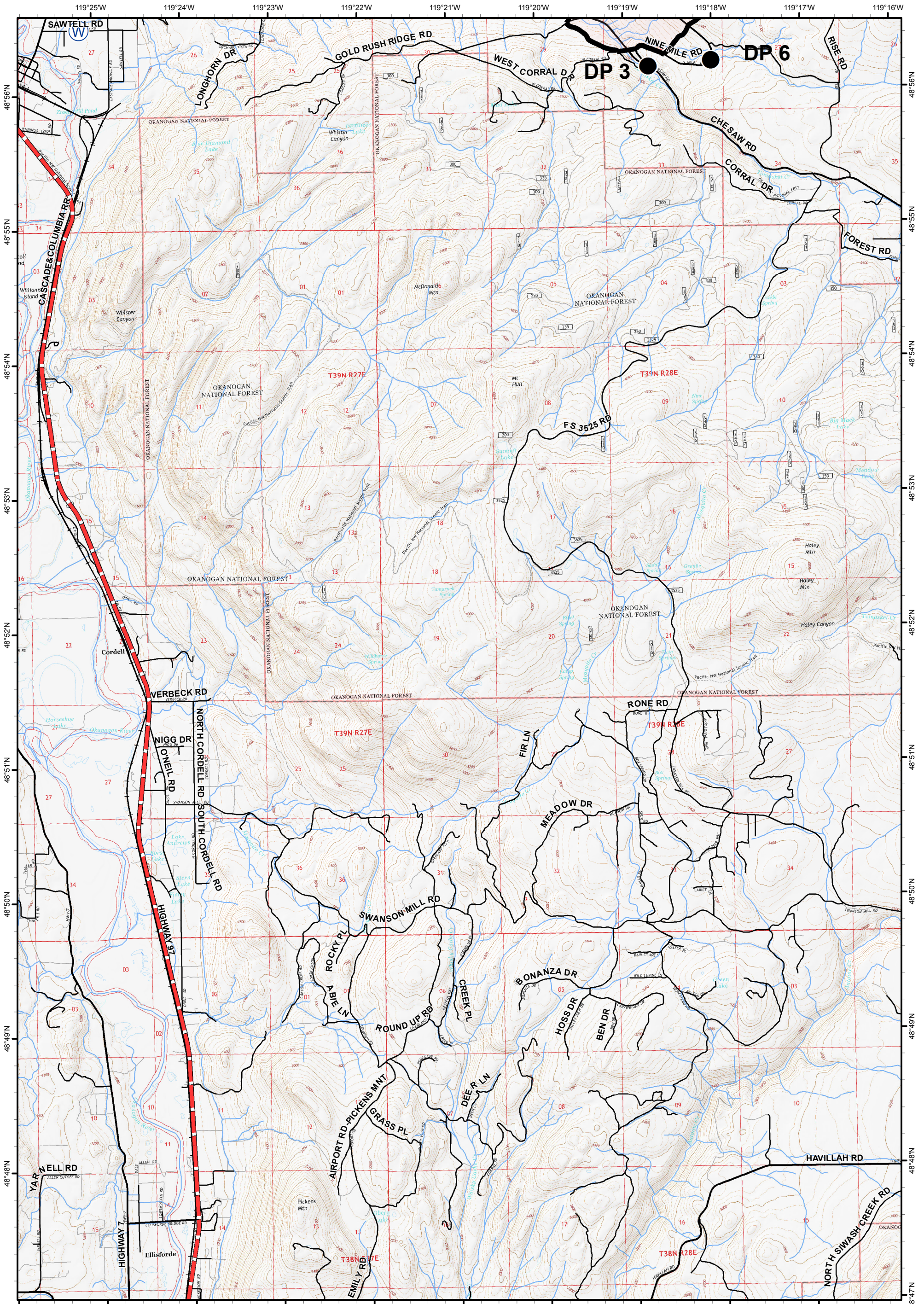
# Okanogan Complex

WA-NES 1203  
IAP Map  
9/4/2015 Day



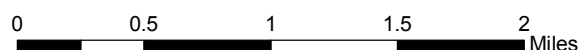
- |  |              |  |                      |  |                        |
|--|--------------|--|----------------------|--|------------------------|
|  | ICP          |  | Water Source         |  | Pump                   |
|  | Drop Point   |  | Safety Zone          |  | Uncontrolled Fire Edge |
|  | Helispot     |  | Completed Dozer Line |  | Completed Line         |
|  | Helibase     |  | Hand Line            |  | Road as Completed Line |
|  | Camp         |  |                      |  |                        |
|  | Repeater     |  |                      |  |                        |
|  | Staging Area |  |                      |  |                        |





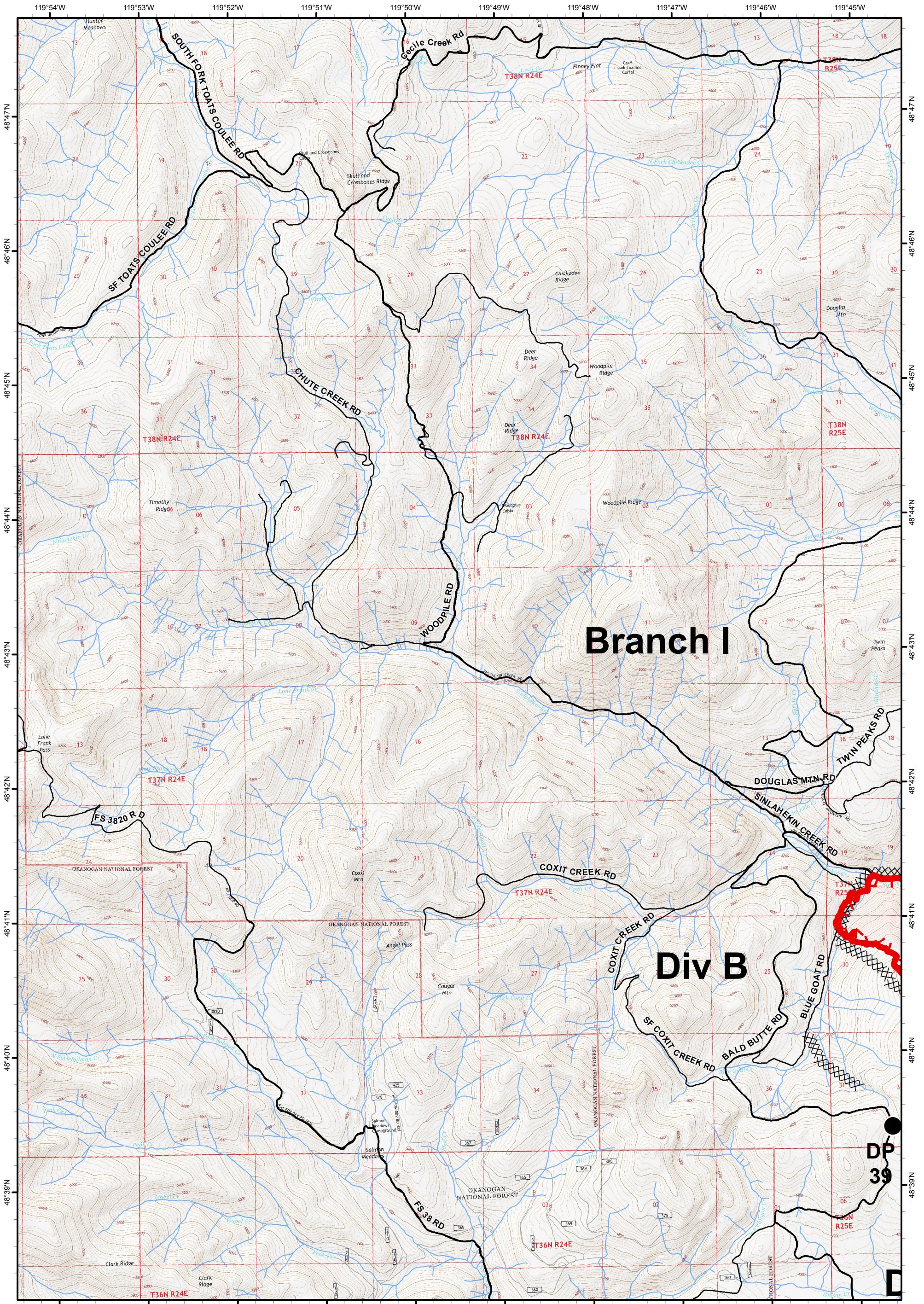
# Okanogan Complex

WA-NES 1203  
IAP Map  
9/4/2015 Day



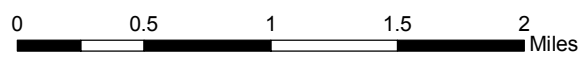
- |  |              |  |                      |  |                        |
|--|--------------|--|----------------------|--|------------------------|
|  | ICP          |  | Water Source         |  | Pump                   |
|  | Drop Point   |  | Safety Zone          |  | Uncontrolled Fire Edge |
|  | Helispot     |  | Completed Dozer Line |  | Completed Line         |
|  | Helibase     |  | Hand Line            |  | Road as Completed Line |
|  | Camp         |  |                      |  |                        |
|  | Repeater     |  |                      |  |                        |
|  | Staging Area |  |                      |  |                        |





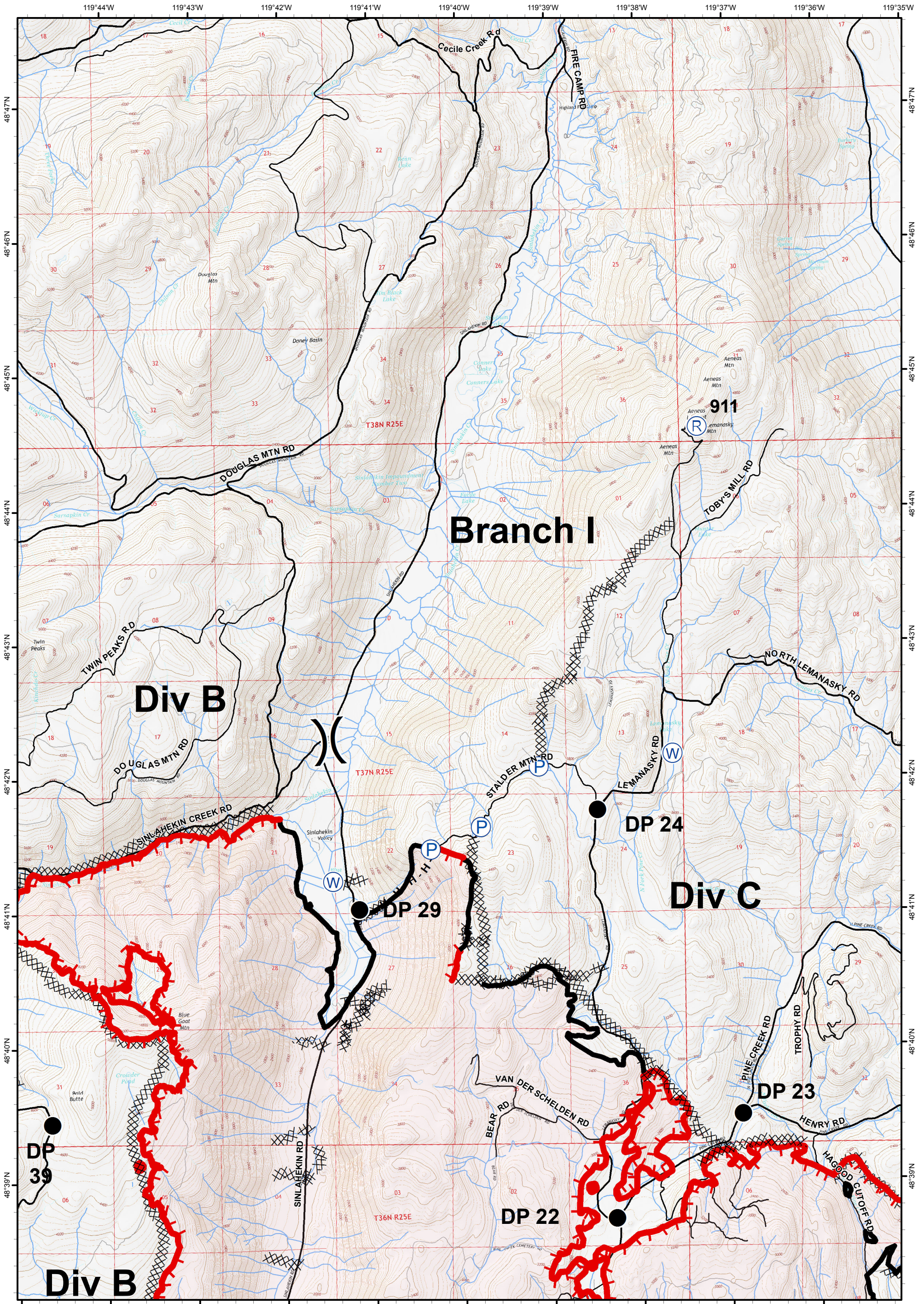
# Okanogon Complex

WA-NES 1203  
IAP Map  
9/4/2015 Day



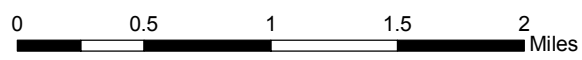
- |  |              |  |                      |  |                        |
|--|--------------|--|----------------------|--|------------------------|
|  | ICP          |  | Water Source         |  | Pump                   |
|  | Drop Point   |  | Safety Zone          |  | Uncontrolled Fire Edge |
|  | Helispot     |  | Completed Dozer Line |  | Completed Line         |
|  | Helibase     |  | Hand Line            |  | Road as Completed Line |
|  | Camp         |  |                      |  |                        |
|  | Repeater     |  |                      |  |                        |
|  | Staging Area |  |                      |  |                        |







# Okanogan Complex

WA-NES 1203  
IAP Map  
9/4/2015 Day

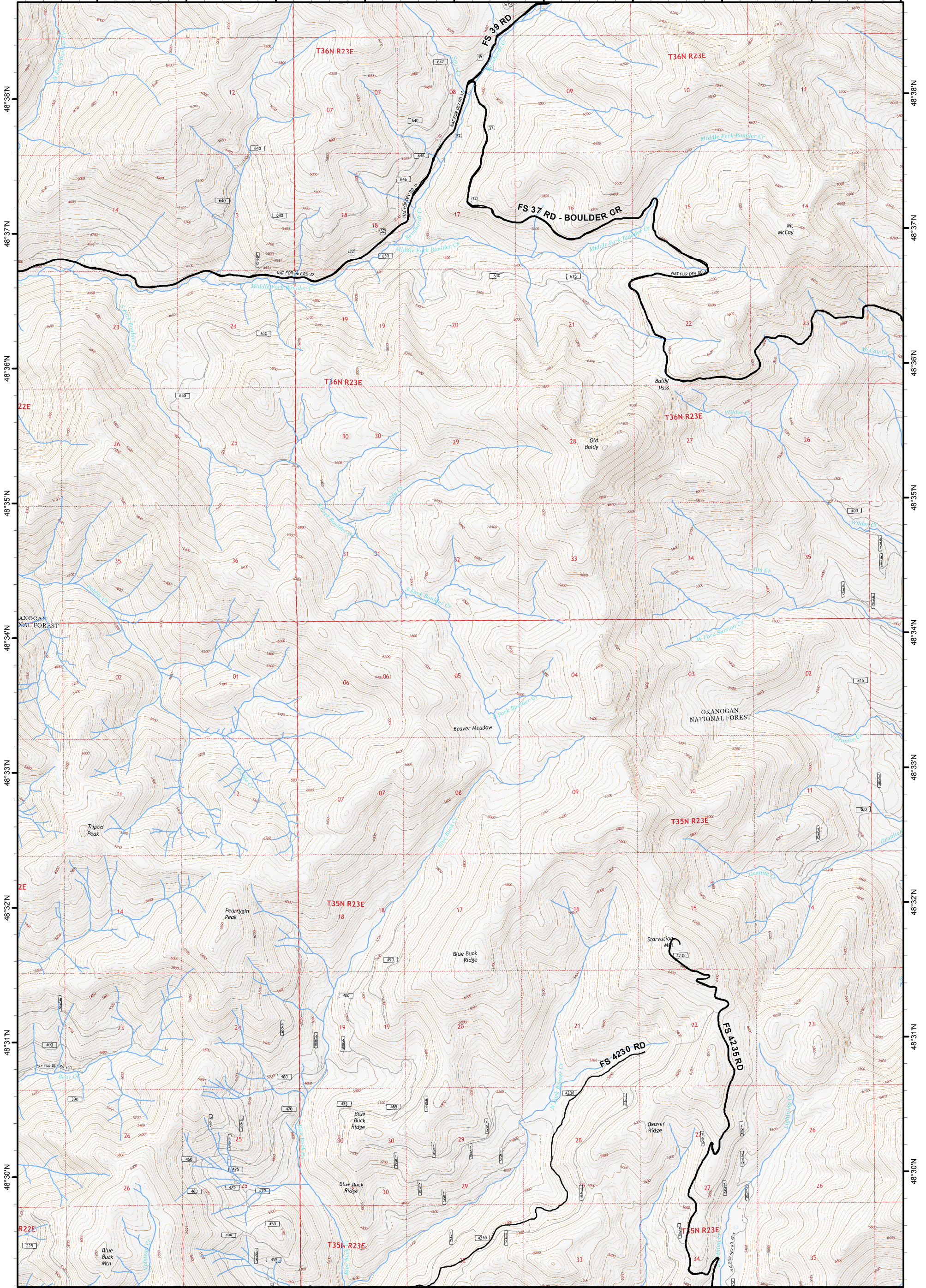


-  ICP
-  Drop Point
-  Helispot
-  Helibase
-  Camp
-  Repeater
-  Staging Area
-  Water Source
-  Safety Zone
-  Uncontrolled Fire Edge
-  Completed Dozer Line
-  Completed Line
-  Hand Line
-  Road as Completed Line
-  Pump





120°3'W 120°2'W 120°1'W 120°0'W 119°59'W 119°58'W 119°57'W 119°56'W 119°55'W 119°54'W





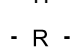




# Okanogan Complex

WA-NES 1203  
IAP Map  
9/4/2015 Day

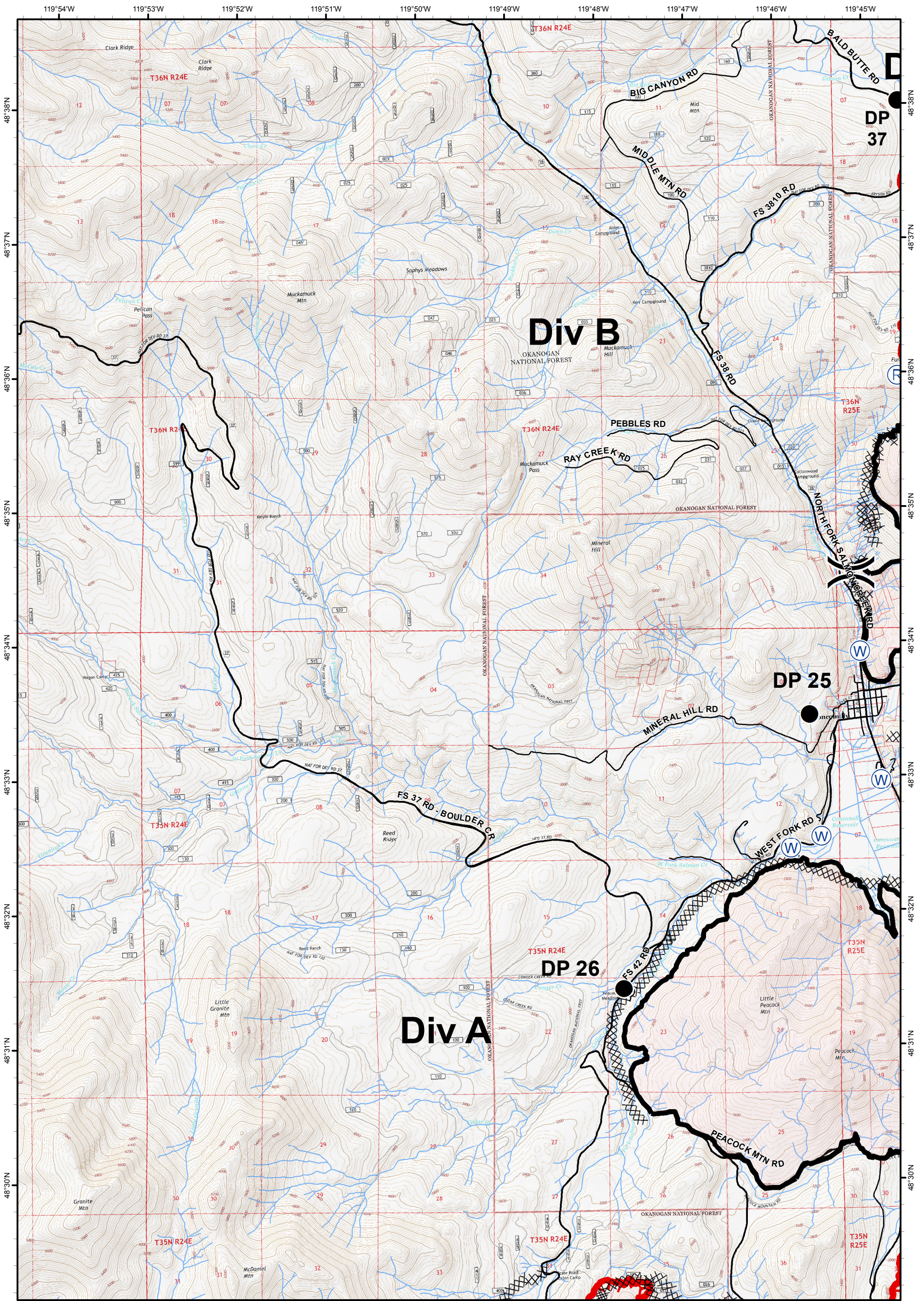


0 0.5 1 1.5 2 Miles

-  ICP
-  Drop Point
-  Helispot
-  Helibase
-  Camp
-  Repeater
-  Staging Area
-  Water Source
-  Safety Zone
-  Uncontrolled Fire Edge
-  Completed Dozer Line
-  Completed Line
-  Hand Line
-  Road as Completed Line
-  Pump














# Okanogan Complex

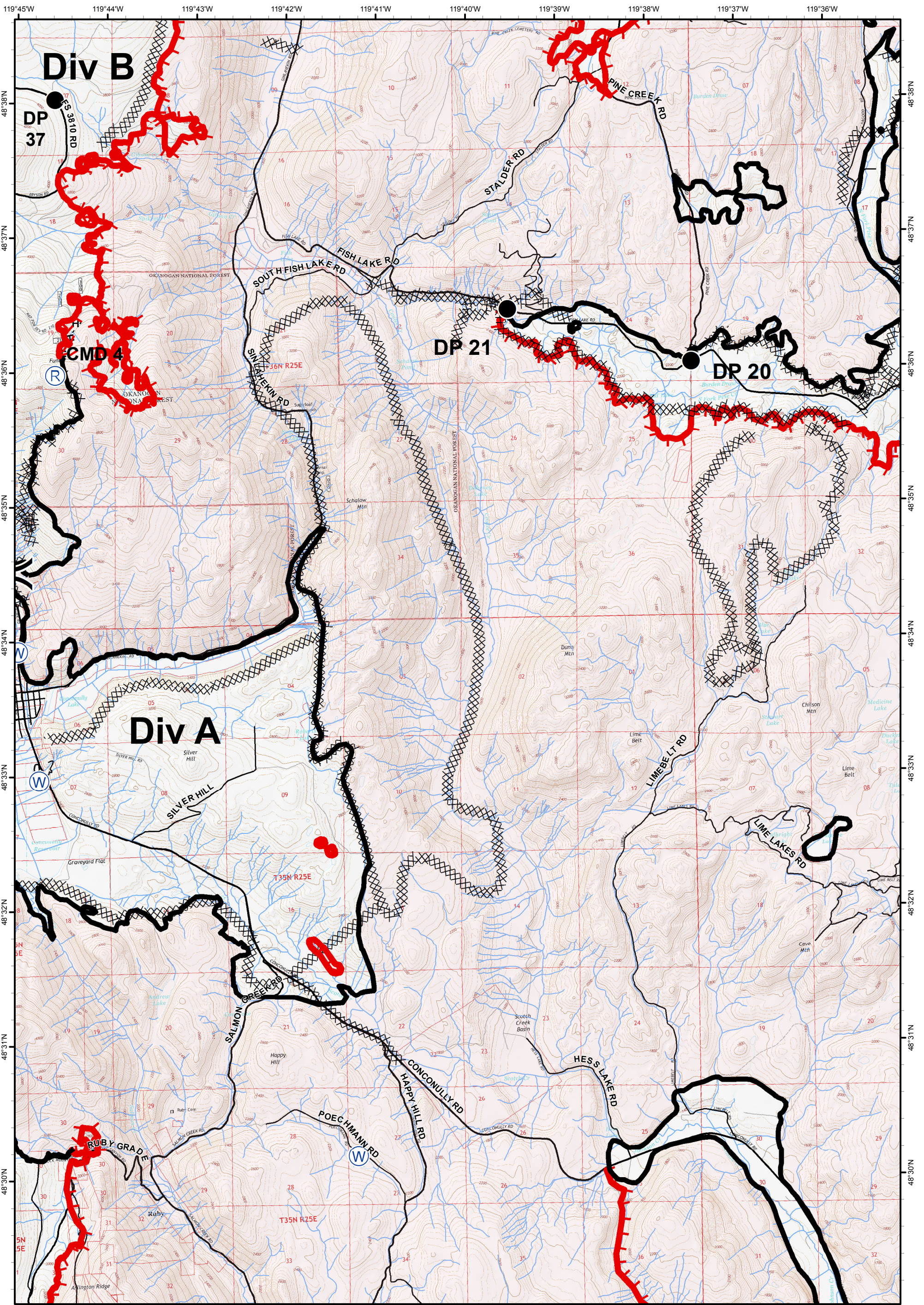
WA-NES 1203  
IAP Map  
9/4/2015 Day



0 0.5 1 1.5 2 Miles

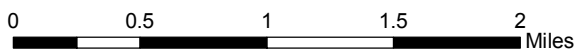
-  ICP
-  Drop Point
-  Helispot
-  Helibase
-  Camp
-  Repeater
-  Staging Area
-  Water Source
-  Safety Zone
-  Uncontrolled Fire Edge
-  Completed Dozer Line
-  Completed Line
-  Hand Line
-  Road as Completed Line
-  Pump





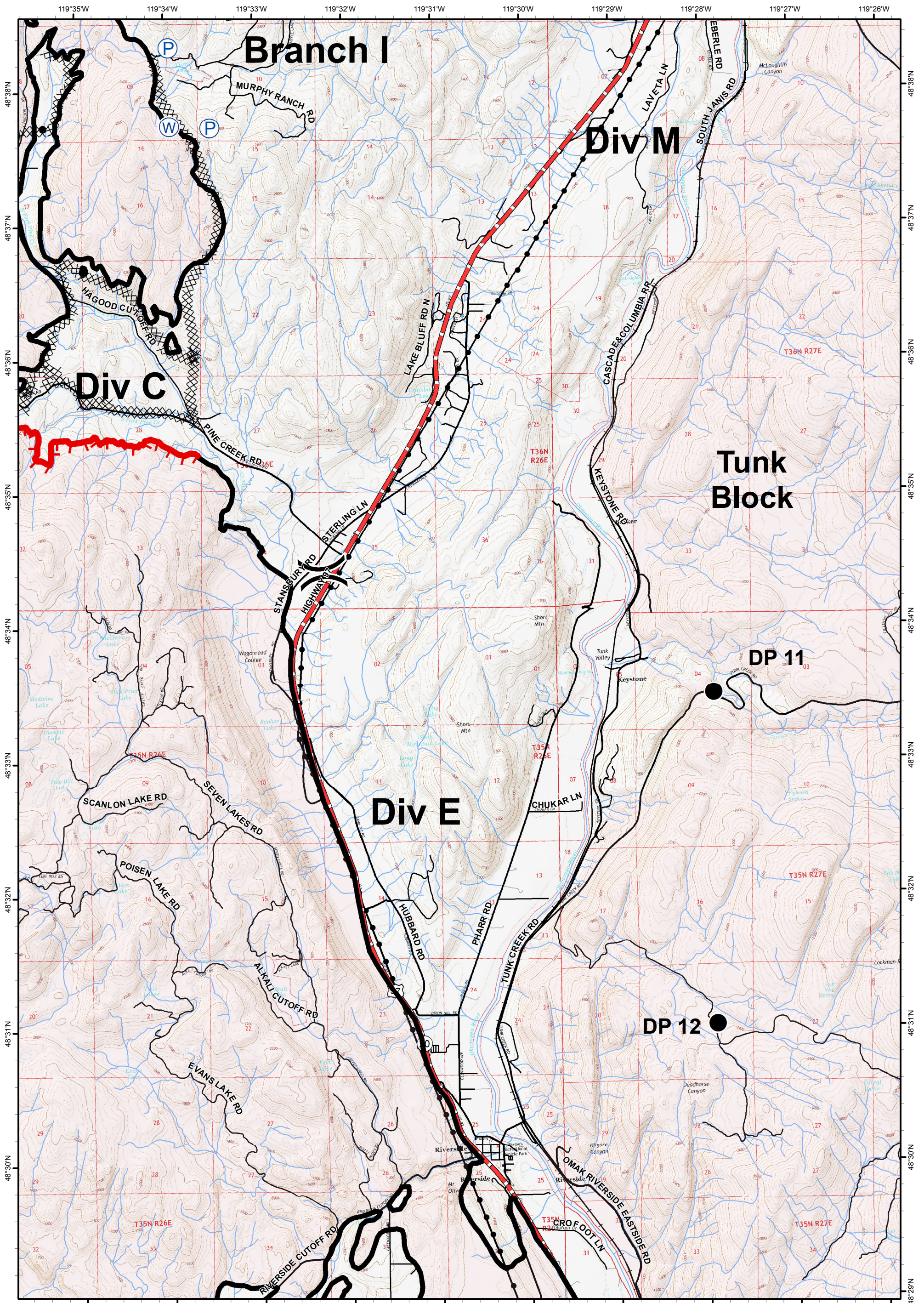
# Okanogan Complex

WA-NES 1203  
IAP Map  
9/4/2015 Day



- |  |              |  |                      |  |                        |
|--|--------------|--|----------------------|--|------------------------|
|  | ICP          |  | Water Source         |  | Pump                   |
|  | Drop Point   |  | Safety Zone          |  | Uncontrolled Fire Edge |
|  | Helispot     |  | Completed Dozer Line |  | Completed Line         |
|  | Camp         |  | Hand Line            |  | Road as Completed Line |
|  | Repeater     |  |                      |  |                        |
|  | Staging Area |  |                      |  |                        |





# Okanogan Complex

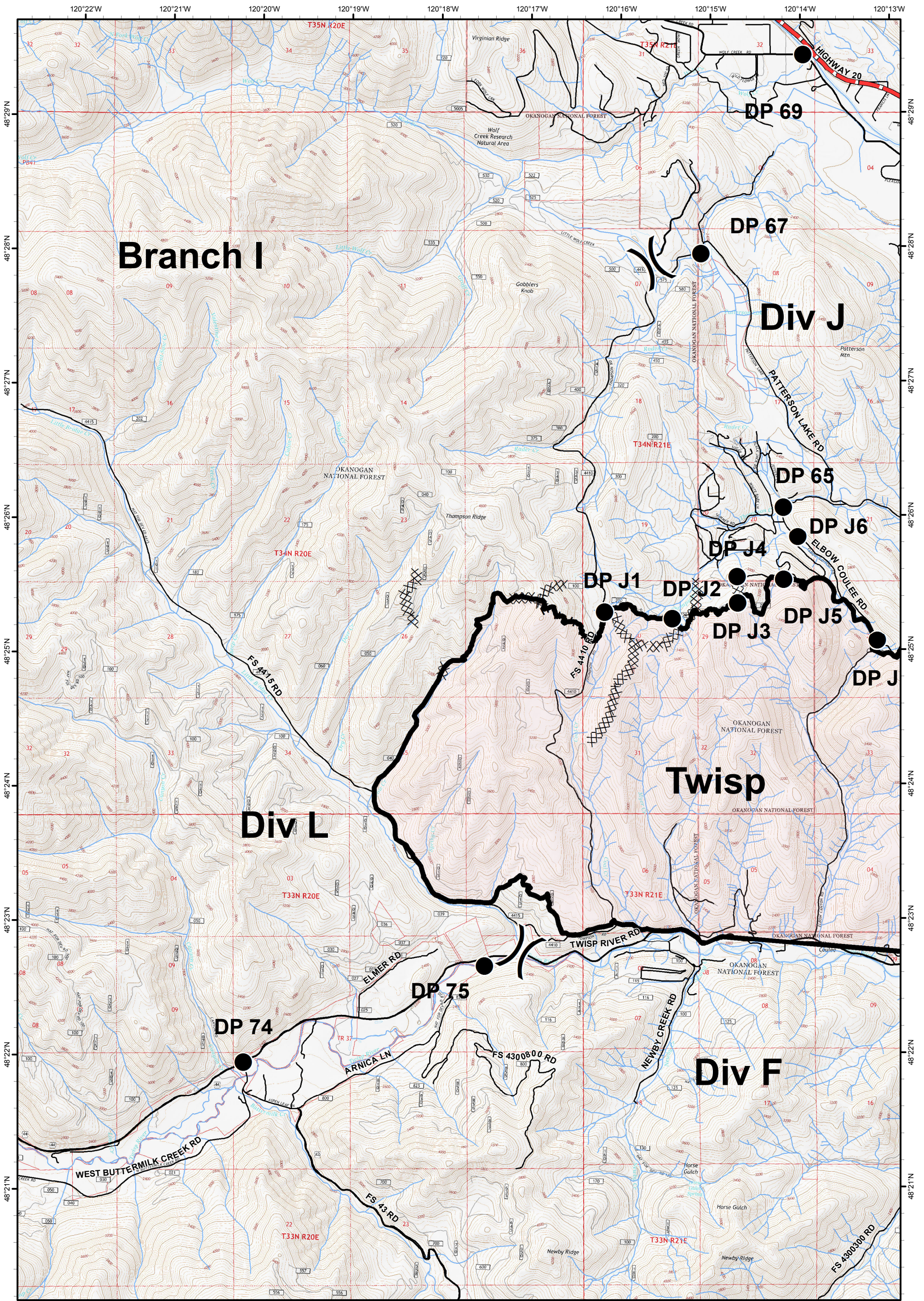
WA-NES 1203  
IAP Map  
9/4/2015 Day



0 0.5 1 1.5 2 Miles

- |  |              |  |                      |  |                        |
|--|--------------|--|----------------------|--|------------------------|
|  | ICP          |  | Water Source         |  | Pump                   |
|  | Drop Point   |  | Safety Zone          |  | Uncontrolled Fire Edge |
|  | Helispot     |  | Completed Dozer Line |  | Completed Line         |
|  | Camp         |  | Hand Line            |  | Road as Completed Line |
|  | Repeater     |  |                      |  |                        |
|  | Staging Area |  |                      |  |                        |




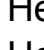







# Okanogan Complex

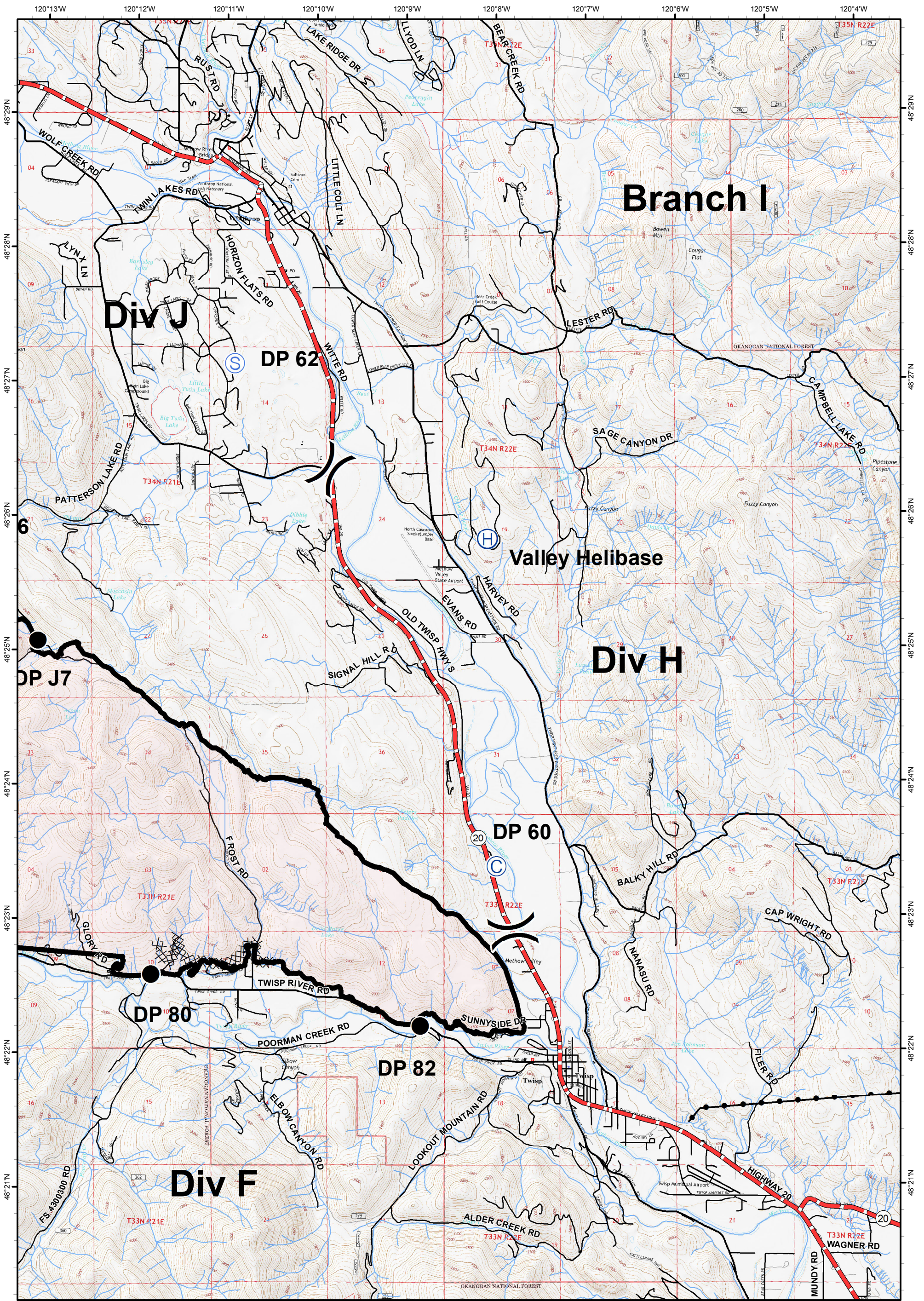
WA-NES 1203  
IAP Map  
9/4/2015 Day



0 0.5 1 1.5 2 Miles

-  ICP
-  Drop Point
-  Helispot
-  Helibase
-  Camp
-  Repeater
-  Staging Area
-  Water Source
-  Safety Zone
-  Uncontrolled Fire Edge
-  Completed Dozer Line
-  Completed Line
-  Hand Line
-  Road as Completed Line
-  Pump





# Okanogan Complex

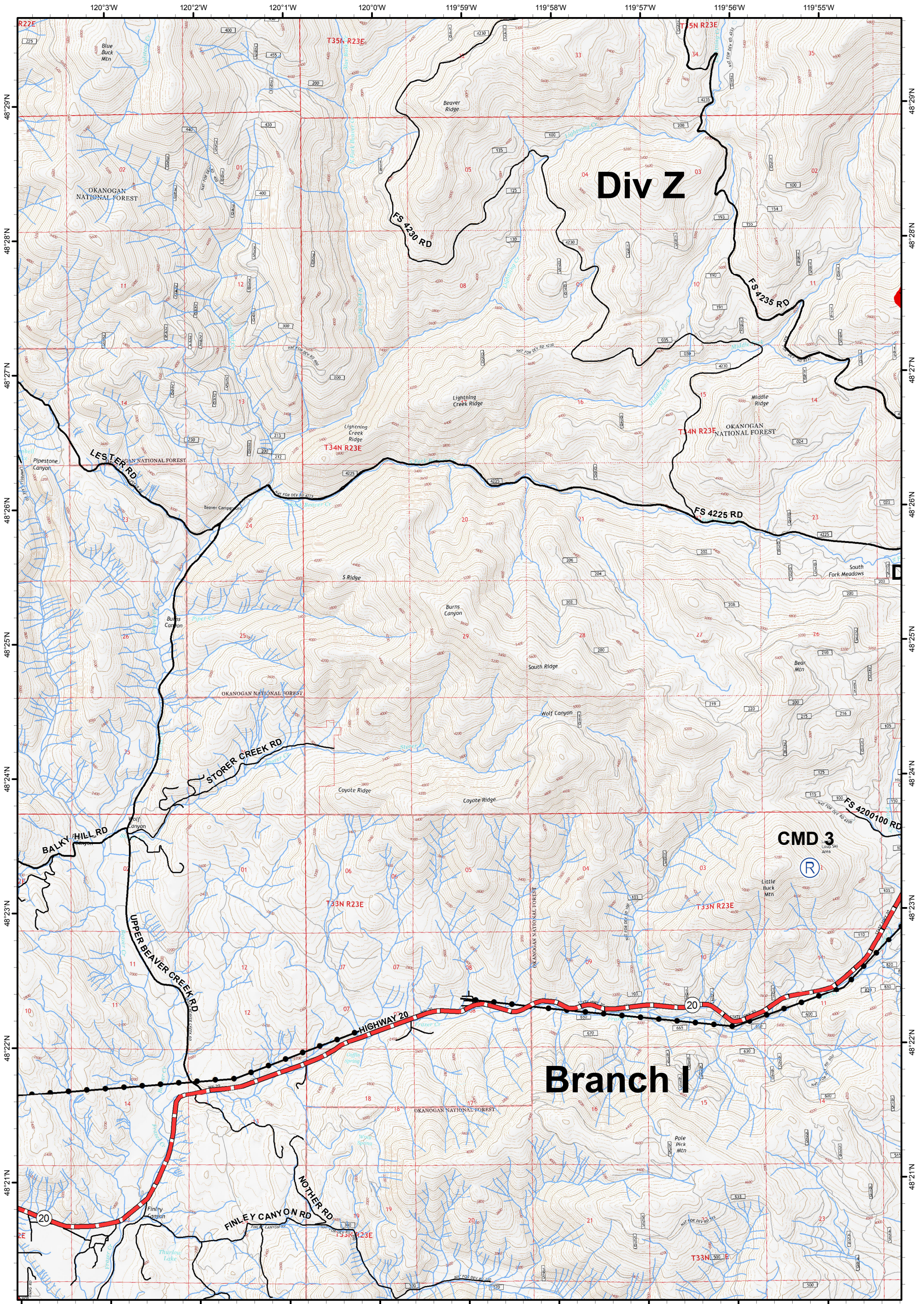
WA-NES 1203  
IAP Map  
9/4/2015 Day



0 0.5 1 1.5 2 Miles

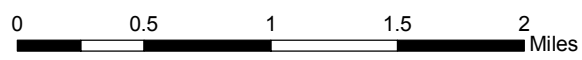
- |  |              |  |                      |  |                        |
|--|--------------|--|----------------------|--|------------------------|
|  | ICP          |  | Water Source         |  | Pump                   |
|  | Drop Point   |  | Safety Zone          |  | Uncontrolled Fire Edge |
|  | Helispot     |  | Completed Dozer Line |  | Completed Line         |
|  | Helibase     |  | Hand Line            |  | Road as Completed Line |
|  | Camp         |  |                      |  |                        |
|  | Repeater     |  |                      |  |                        |
|  | Staging Area |  |                      |  |                        |





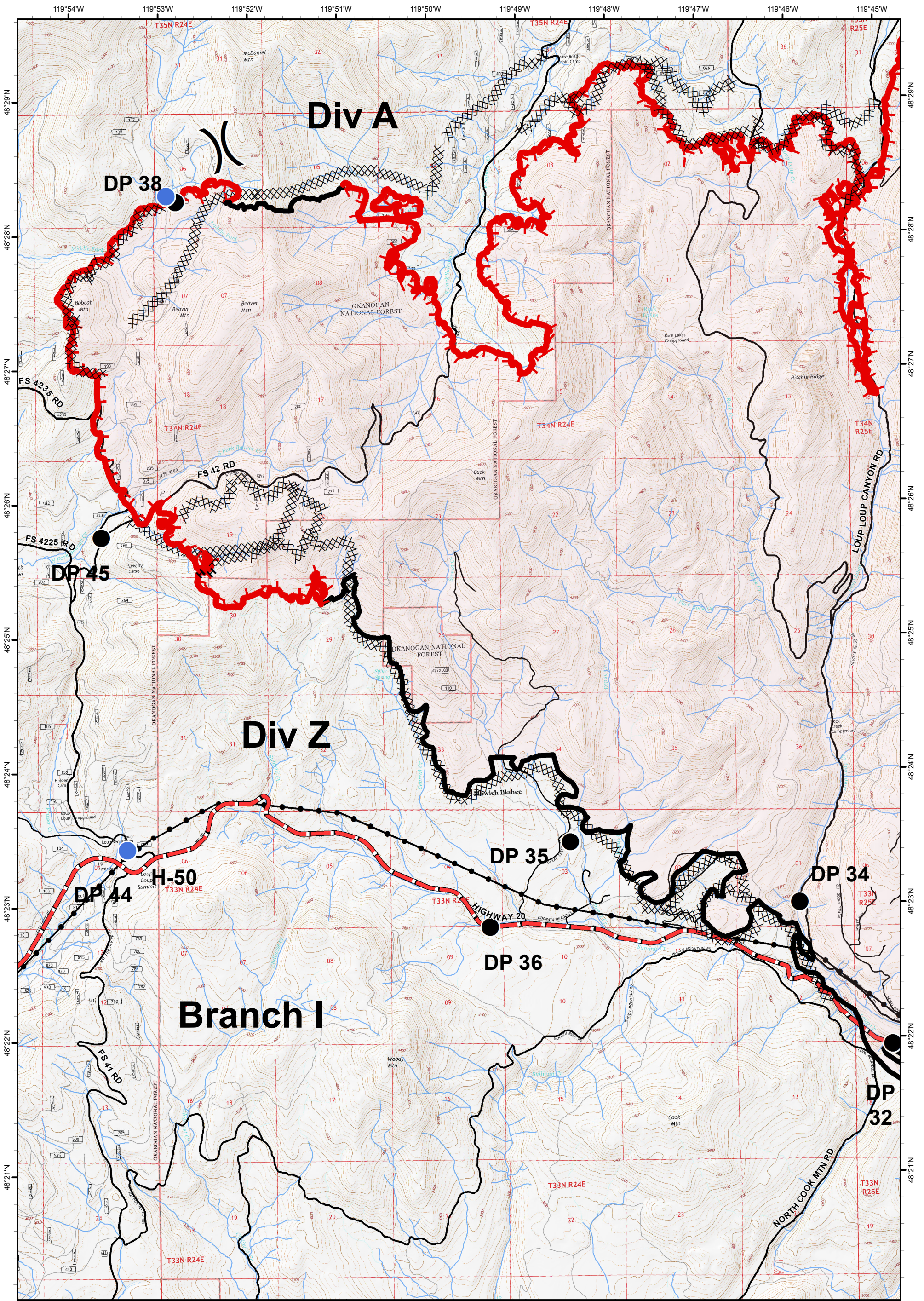
# Okanogan Complex

WA-NES 1203  
IAP Map  
9/4/2015 Day



- |  |              |  |                      |  |                        |
|--|--------------|--|----------------------|--|------------------------|
|  | ICP          |  | Water Source         |  | Pump                   |
|  | Drop Point   |  | Safety Zone          |  | Uncontrolled Fire Edge |
|  | Helispot     |  | Completed Dozer Line |  | Completed Line         |
|  | Helibase     |  | Hand Line            |  | Road as Completed Line |
|  | Camp         |  |                      |  |                        |
|  | Repeater     |  |                      |  |                        |
|  | Staging Area |  |                      |  |                        |





# Okanogan Complex

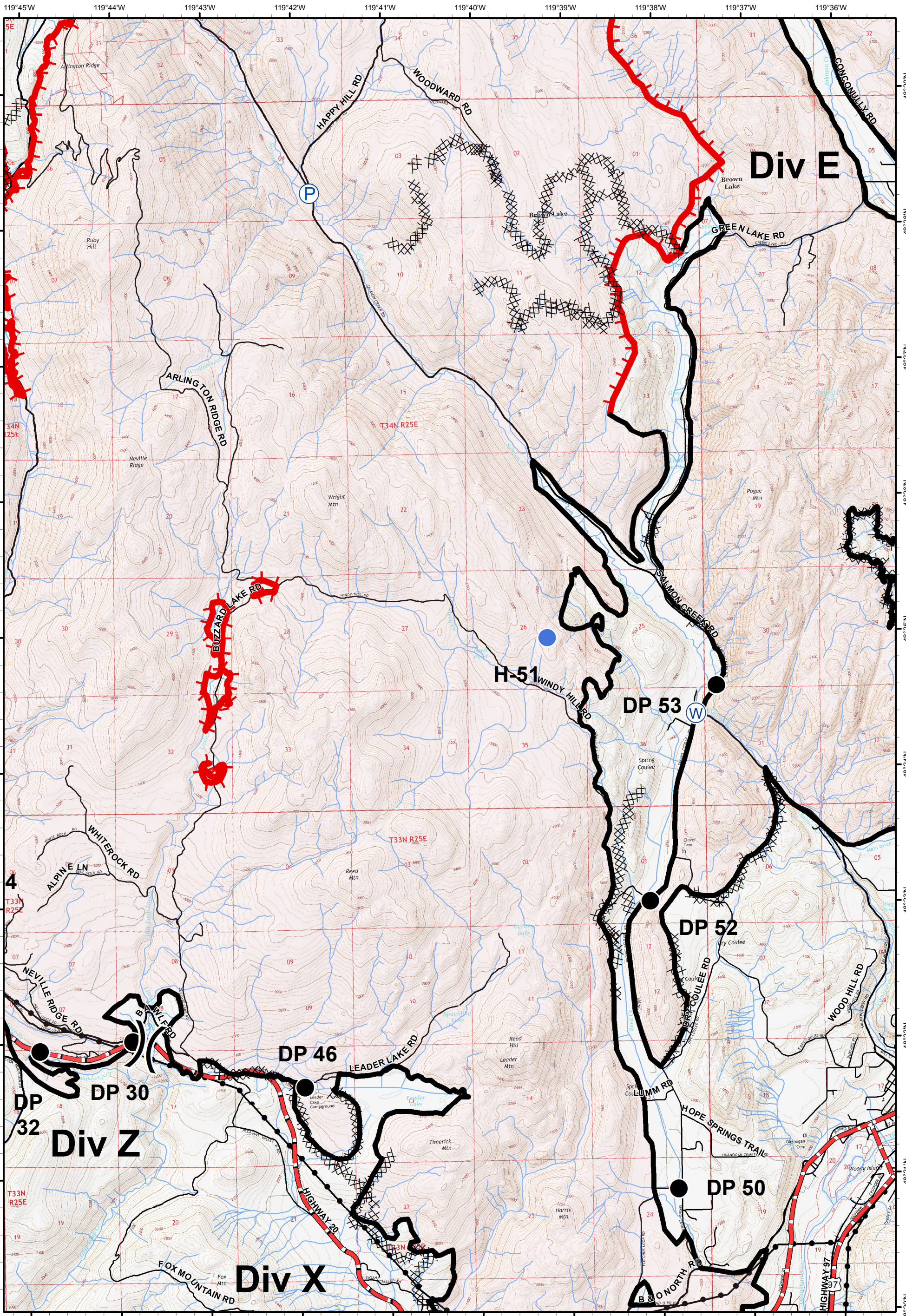
WA-NES 1203  
IAP Map  
9/4/2015 Day



0 0.5 1 1.5 2 Miles

- |  |              |  |                      |  |                        |
|--|--------------|--|----------------------|--|------------------------|
|  | ICP          |  | Water Source         |  | Pump                   |
|  | Drop Point   |  | Safety Zone          |  | Uncontrolled Fire Edge |
|  | Helispot     |  | Completed Dozer Line |  | Completed Line         |
|  | Helibase     |  | Hand Line            |  | Road as Completed Line |
|  | Camp         |  |                      |  |                        |
|  | Repeater     |  |                      |  |                        |
|  | Staging Area |  |                      |  |                        |





# Okanogan Complex

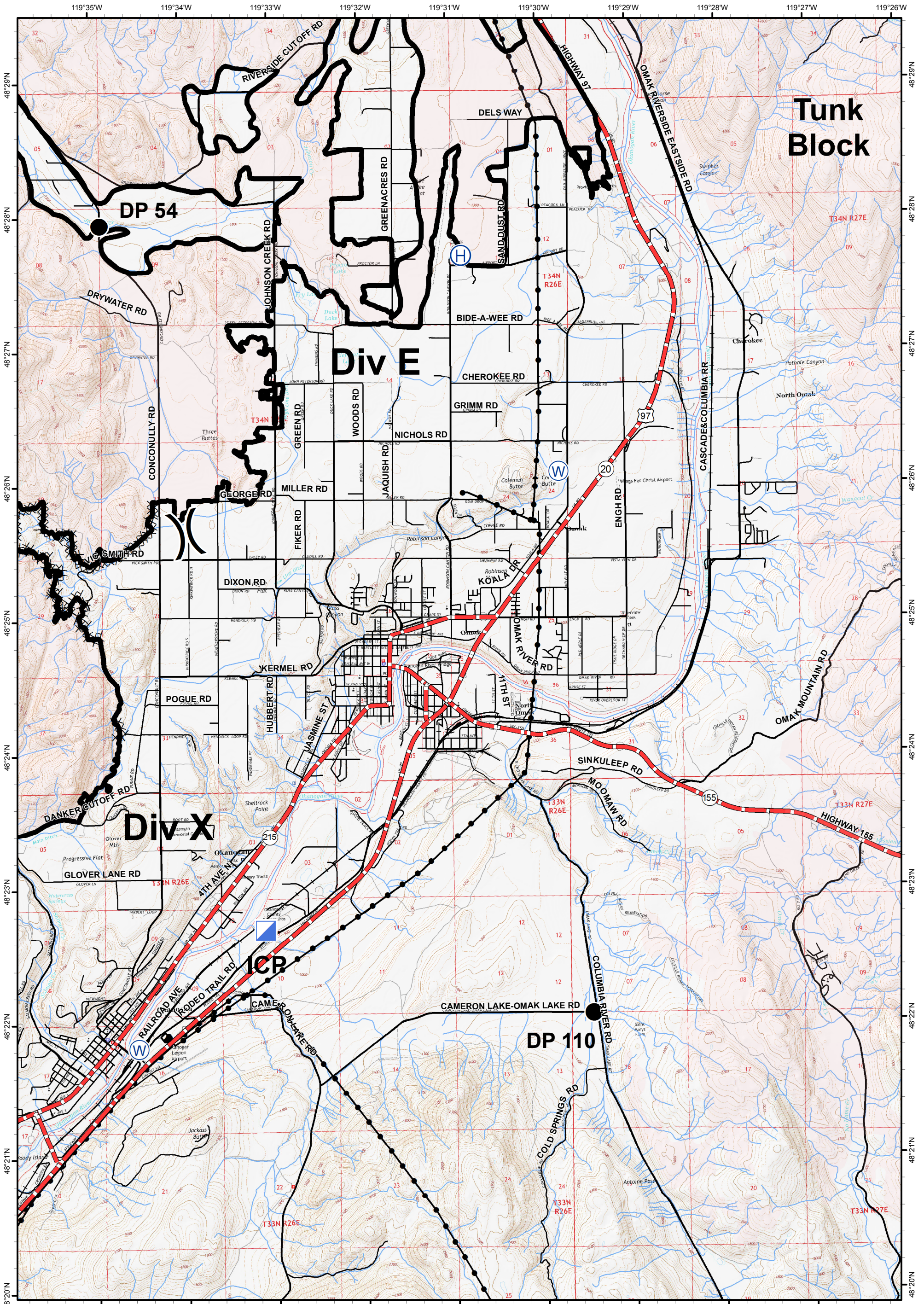
WA-NES 1203  
IAP Map  
9/4/2015 Day



- ICP
- Drop Point
- Helispot
- Helibase
- Camp
- Repeater
- Staging Area
- Water Source
- Safety Zone
- Uncontrolled Fire Edge
- Completed Dozer Line
- Completed Line
- Hand Line
- Road as Completed Line
- Pump

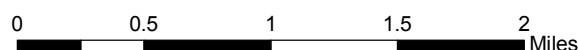









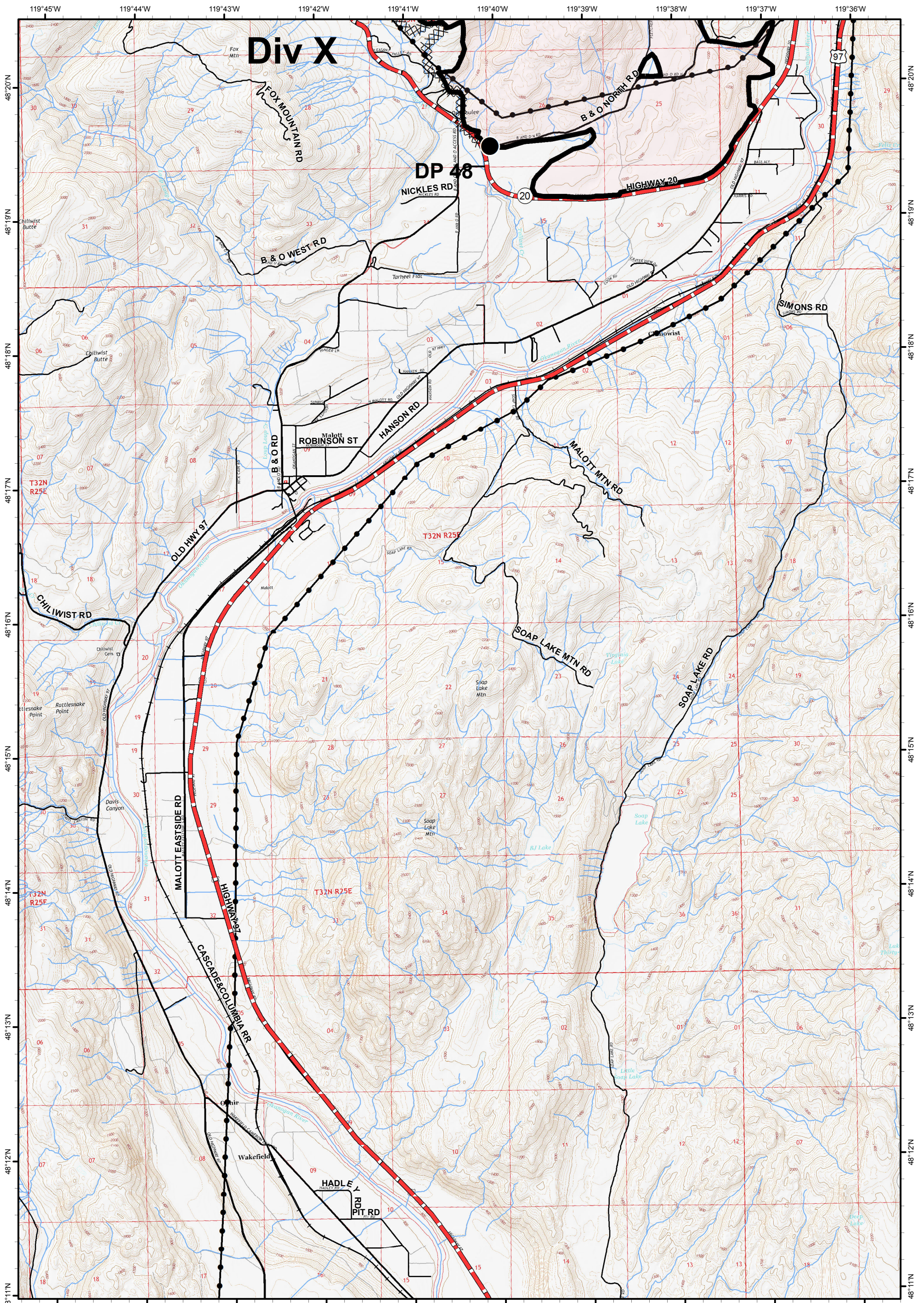
# Okanogan Complex

WA-NES 1203  
IAP Map  
9/4/2015 Day



-  ICP
-  Drop Point
-  Helispot
-  Helibase
-  Camp
-  Repeater
-  Staging Area
-  Water Source
-  Safety Zone
-  Uncontrolled Fire Edge
-  Completed Dozer Line
-  Completed Line
-  Hand Line
-  Road as Completed Line
-  Pump





# Okanogan Complex

WA-NES 1203  
IAP Map  
9/4/2015 Day



0 0.5 1 1.5 2 Miles

- |  |              |  |                      |  |                        |
|--|--------------|--|----------------------|--|------------------------|
|  | ICP          |  | Water Source         |  | Pump                   |
|  | Drop Point   |  | Safety Zone          |  | Uncontrolled Fire Edge |
|  | Helispot     |  | Completed Dozer Line |  | Completed Line         |
|  | Helibase     |  | Hand Line            |  | Road as Completed Line |
|  | Camp         |  |                      |  |                        |
|  | Repeater     |  |                      |  |                        |
|  | Staging Area |  |                      |  |                        |

