

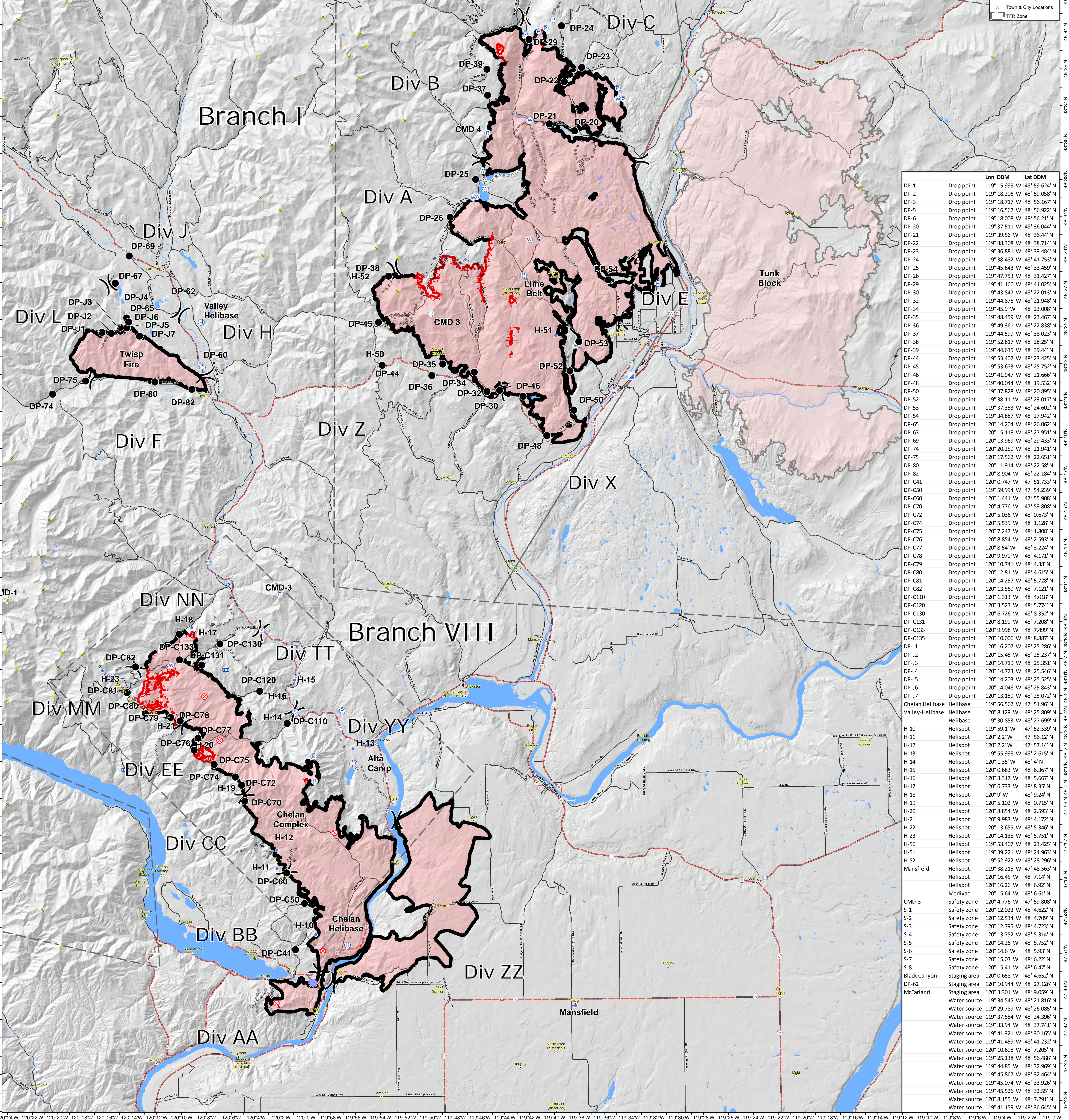
Okanogan Working Air Ops Map

Working Air Ops Map
WA-NES-1203
9/8/2015

Perimeter as of 9/7/2015 @ 2200
2 Miles

- X Summits => 6000ft
- C Camp
- W Water Source
- Drop Point
- ⊗ Fire Origin
- H Helibase
- ⊕ Helispot
- Ⓜ Incident Command Post
- Ⓜ Medivac Site
- Ⓜ Mobile Weather Unit
- P Pump
- R Repeater
- Ⓜ Safety Zone
- Ⓜ Sling Site
- Ⓜ Spot Fire
- Ⓜ Staging Area
- Ⓜ Other
- Uncontrolled Fire Edge
- Completed Dozer Line
- Completed Line
- - - Hand Line
- Ⓜ Road as Completed Line
- Town & City Locations
- Ⓜ TFR Zone

		Lon (DDM)	Lat (DDM)
Valley(Twisp)-Helibase	Helibase	120° 8.21'W	48° 25.82'N
Helipad-1	Valley (Twisp)Helibase	120°08.366	48°25.170
Helipad-2	Valley (Twisp)Helibase	120°08.339	48°25.146
Helipad-3	Valley (Twisp)Helibase	120°08.320	48°25.125
Helipad-4	Valley (Twisp)Helibase	120°08.338	48°25.189
Helipad-5	Valley (Twisp)Helibase	120°08.311	48°25.169
Helipad-6	Valley (Twisp)Helibase	120°08.283	48°25.128
Helipad-7	Valley (Twisp)Helibase	120°08.286	48°25.191
Helipad-8	Valley (Twisp)Helibase	120°08.223	48°25.175
Helipad-9	Valley (Twisp)Helibase	120°08.238	48°25.132
Omak Helibase	Helibase	119° 30.853'W	48° 27.699'N
Helipad-2	Omak Helibase	119°31.014	48°27.744
Helipad-3	Omak Helibase	119°31.024	48°27.774
Helipad-4	Omak Helibase	119°31.024	48°27.804
Helipad-5	Omak Helibase	119°31.018	48°27.834
Helipad-6	Omak Helibase	119°31.008	48°27.859
Helipad-7	Omak Helibase	119°31.003	48°27.888
Helipad-8	Omak Helibase	119°30.995	48°27.914
Helipad-9	Omak Helibase	119°30.988	48°27.941
Helipad-10	Omak Helibase	119°30.981	48°27.969
Helipad-11	Omak Helibase	119°30.974	48°27.999
Helipad-12	Omak Helibase	119°30.967	48°28.028
Helipad-13	Omak Helibase	119°30.960	48°28.056
Helipad-14	Omak Helibase	119°30.953	48°28.082
Helipad-15	Omak Helibase	119°30.947	48°28.110
Helipad-16	Omak Helibase	119°30.939	48°28.139
Helipad-17	Omak Helibase	119°30.933	48°28.165
Chelan Helibase	Helibase	119° 56.562'W	47° 51.96'N



		Lon DDM	Lat DDM
DP-1	Drop point	119° 15.995' W	48° 59.624' N
DP-2	Drop point	119° 18.206' W	48° 59.058' N
DP-3	Drop point	119° 18.717' W	48° 56.167' N
DP-5	Drop point	119° 16.562' W	48° 56.922' N
DP-6	Drop point	119° 18.008' W	48° 56.21' N
DP-20	Drop point	119° 37.511' W	48° 36.044' N
DP-21	Drop point	119° 39.56' W	48° 36.44' N
DP-22	Drop point	119° 38.308' W	48° 38.714' N
DP-23	Drop point	119° 36.881' W	48° 39.484' N
DP-24	Drop point	119° 38.482' W	48° 41.753' N
DP-25	Drop point	119° 45.643' W	48° 33.459' N
DP-26	Drop point	119° 47.753' W	48° 31.427' N
DP-29	Drop point	119° 41.166' W	48° 41.025' N
DP-30	Drop point	119° 43.847' W	48° 22.013' N
DP-32	Drop point	119° 44.876' W	48° 21.948' N
DP-34	Drop point	119° 45.9' W	48° 23.008' N
DP-35	Drop point	119° 48.459' W	48° 23.467' N
DP-36	Drop point	119° 49.361' W	48° 22.838' N
DP-37	Drop point	119° 44.599' W	48° 38.023' N
DP-38	Drop point	119° 52.817' W	48° 28.25' N
DP-39	Drop point	119° 44.635' W	48° 39.44' N
DP-44	Drop point	119° 53.407' W	48° 23.425' N
DP-45	Drop point	119° 53.673' W	48° 25.752' N
DP-46	Drop point	119° 41.947' W	48° 21.666' N
DP-48	Drop point	119° 40.044' W	48° 19.532' N
DP-50	Drop point	119° 37.828' W	48° 20.895' N
DP-52	Drop point	119° 38.11' W	48° 23.017' N
DP-53	Drop point	119° 37.353' W	48° 24.602' N
DP-54	Drop point	119° 34.887' W	48° 27.942' N
DP-65	Drop point	120° 14.204' W	48° 26.062' N
DP-67	Drop point	120° 15.118' W	48° 27.951' N
DP-69	Drop point	120° 13.969' W	48° 29.433' N
DP-74	Drop point	120° 20.259' W	48° 21.941' N
DP-75	Drop point	120° 17.562' W	48° 22.651' N
DP-80	Drop point	120° 11.914' W	48° 22.58' N
DP-82	Drop point	120° 8.904' W	48° 22.184' N
DP-C41	Drop point	120° 0.747' W	47° 51.733' N
DP-C50	Drop point	119° 59.994' W	47° 54.239' N
DP-C60	Drop point	120° 1.441' W	47° 55.908' N
DP-C70	Drop point	120° 4.776' W	47° 59.808' N
DP-C72	Drop point	120° 5.036' W	48° 0.673' N
DP-C74	Drop point	120° 5.539' W	48° 1.128' N
DP-C75	Drop point	120° 7.247' W	48° 1.808' N
DP-C76	Drop point	120° 8.854' W	48° 2.593' N
DP-C77	Drop point	120° 8.54' W	48° 3.224' N
DP-C78	Drop point	120° 9.979' W	48° 4.171' N
DP-C79	Drop point	120° 10.741' W	48° 4.38' N
DP-C80	Drop point	120° 12.81' W	48° 4.615' N
DP-C81	Drop point	120° 14.257' W	48° 5.728' N
DP-C82	Drop point	120° 13.569' W	48° 7.121' N
DP-C110	Drop point	120° 1.313' W	48° 4.018' N
DP-C120	Drop point	120° 3.523' W	48° 5.774' N
DP-C130	Drop point	120° 6.726' W	48° 8.352' N
DP-C131	Drop point	120° 8.199' W	48° 7.208' N
DP-C133	Drop point	120° 9.998' W	48° 7.499' N
DP-C135	Drop point	120° 10.006' W	48° 8.887' N
DP-J1	Drop point	120° 16.207' W	48° 25.286' N
DP-J2	Drop point	120° 15.45' W	48° 25.237' N
DP-J3	Drop point	120° 14.719' W	48° 25.351' N
DP-J4	Drop point	120° 14.723' W	48° 25.546' N
DP-J5	Drop point	120° 14.203' W	48° 25.525' N
DP-J6	Drop point	120° 14.046' W	48° 25.843' N
DP-J7	Drop point	120° 13.159' W	48° 25.072' N
Chelan Helibase	Helibase	119° 56.562' W	47° 51.96' N
Valley-Helibase	Helibase	120° 8.129' W	48° 25.809' N
H-10	Helispot	119° 59.1' W	47° 52.539' N
H-11	Helispot	120° 2.2' W	47° 56.12' N
H-12	Helispot	120° 2.2' W	47° 57.14' N
H-13	Helispot	119° 55.998' W	48° 2.615' N
H-14	Helispot	120° 1.35' W	48° 4' N
H-15	Helispot	120° 0.683' W	48° 6.367' N
H-16	Helispot	120° 3.317' W	48° 5.567' N
H-17	Helispot	120° 6.733' W	48° 8.35' N
H-18	Helispot	120° 9' W	48° 9.24' N
H-19	Helispot	120° 5.102' W	48° 0.715' N
H-20	Helispot	120° 8.854' W	48° 2.593' N
H-21	Helispot	120° 9.983' W	48° 4.172' N
H-22	Helispot	120° 13.655' W	48° 5.346' N
H-23	Helispot	120° 14.138' W	48° 5.751' N
H-50	Helispot	119° 53.407' W	48° 23.425' N
H-51	Helispot	119° 39.221' W	48° 24.963' N
H-52	Helispot	119° 52.922' W	48° 28.296' N
Mansfield	Helispot	120° 16.26' W	48° 6.92' N
Medivac	Medivac	120° 15.64' W	48° 6.61' N
CMD-3	Safety zone	120° 4.776' W	47° 59.808' N
S-1	Safety zone	120° 12.023' W	48° 4.622' N
S-2	Safety zone	120° 12.534' W	48° 4.709' N
S-3	Safety zone	120° 12.795' W	48° 4.723' N
S-4	Safety zone	120° 13.752' W	48° 5.314' N
S-5	Safety zone	120° 14.26' W	48° 5.752' N
S-6	Safety zone	120° 14.6' W	48° 5.93' N
S-7	Safety zone	120° 15.03' W	48° 6.22' N
S-8	Safety zone	120° 15.41' W	48° 6.47' N
Black Canyon	Staging area	120° 0.658' W	48° 4.652' N
DP-62	Staging area	120° 10.944' W	48° 27.126' N
McFarland	Staging area	120° 3.301' W	48° 9.059' N
	Water source	119° 34.545' W	48° 21.816' N
	Water source	119° 37.584' W	48° 24.396' N
	Water source	119° 33.94' W	48° 37.741' N
	Water source	119° 41.321' W	48° 30.165' N
	Water source	119° 41.459' W	48° 41.232' N
	Water source	120° 10.698' W	48° 7.205' N
	Water source	119° 25.138' W	48° 56.488' N
	Water source	119° 44.85' W	48° 32.969' N
	Water source	119° 45.867' W	48° 32.464' N
	Water source	119° 45.074' W	48° 33.926' N
	Water source	120° 8.155' W	48° 7.291' N
	Water source	119° 41.159' W	48° 36.645' N