

**OKANOGAN COMPLEX**

WA-NES-001203  
IAP Map

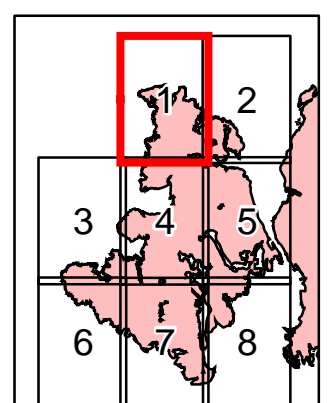
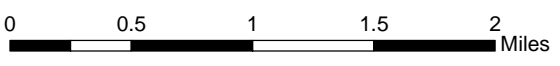
Perimeter information is current as of September 13, 2013 hrs. 133,142 acres.

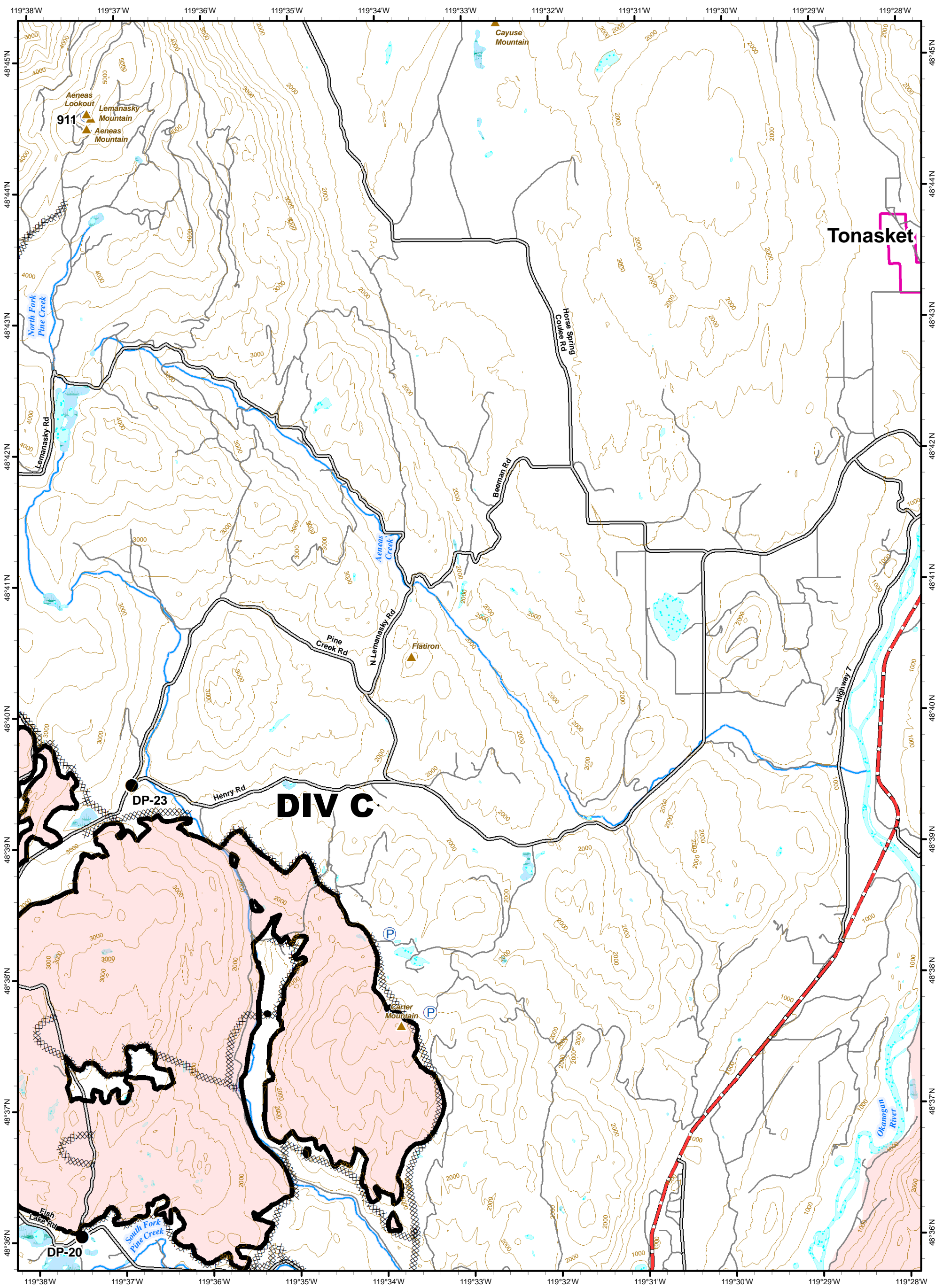
S. B. Miller and B. Mangis: GIS for Central Washington Area IMT 5

September 15, 2015

**Legend**

- Division Breaks
- Fire Polygon
- Water Source
- Repeater
- Drop Point
- Helibase
- Helispot
- Incident Command Post
- Uncontrolled Fire Edge
- Completed Dozer Line
- Completed Line
- Hand Line
- Road as Completed Line
- Highways
- Primary Roads
- Unimproved Roads
- City Limits





**Tonasket**

**DIV C**

DP-23

DP-20

**OKANOGAN COMPLEX**

WA-NES-001203  
IAP Map

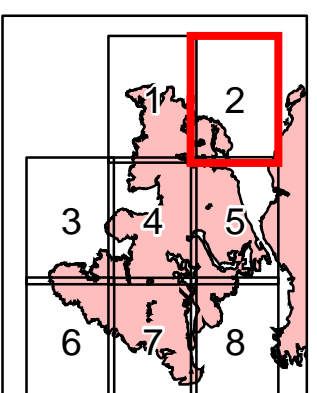
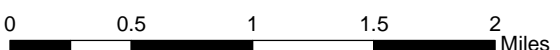
Perimeter information is current as of September 13, 2013 hrs. 133,142 acres.

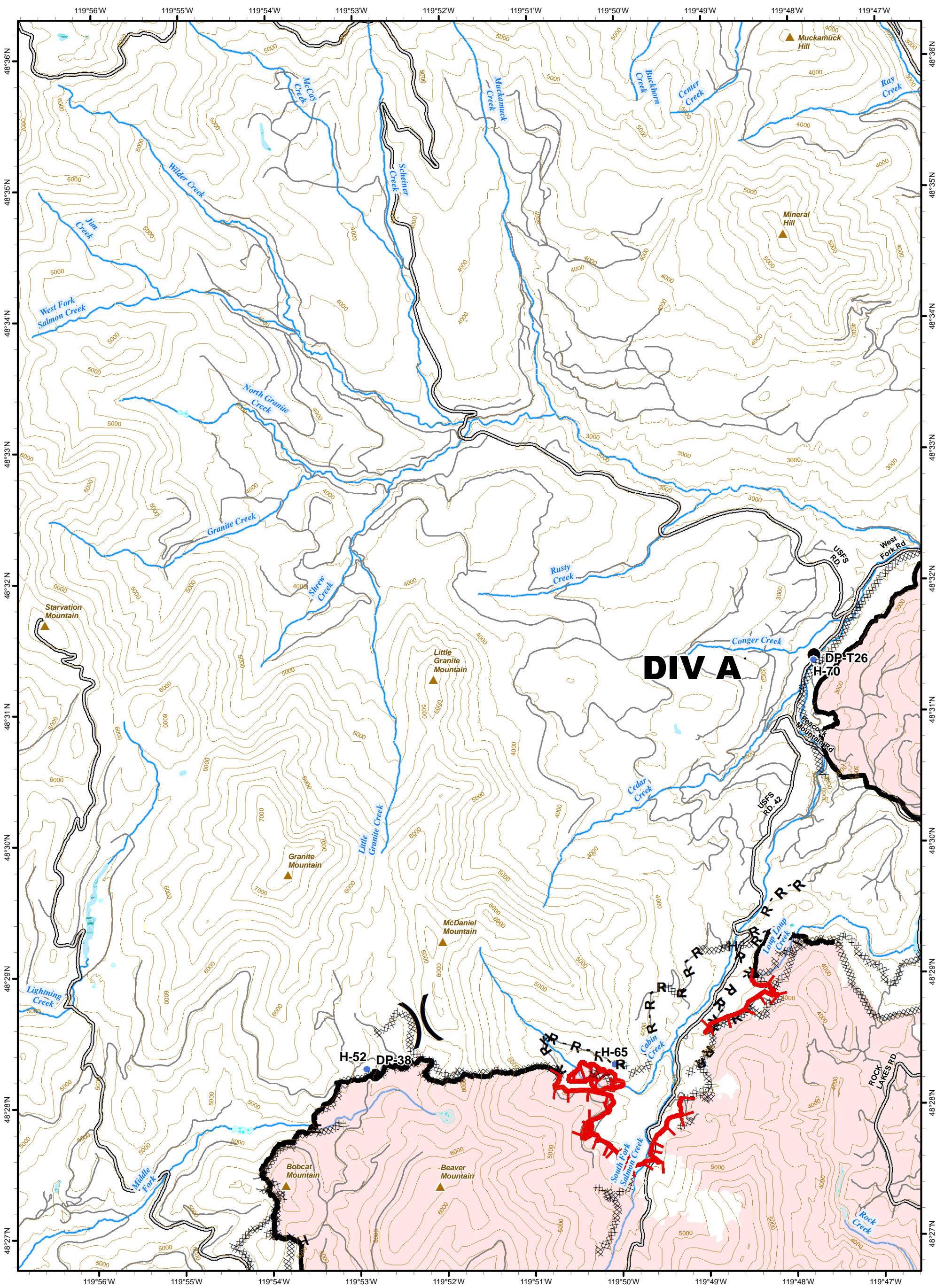
S. B. Miller and B. Mangis: GIS for Central Washington Area IMT 5

September 15, 2015

**Legend**

- Division Breaks
- Fire Polygon
- Water Source
- Repeater
- Drop Point
- Helibase
- Helispot
- Incident Command Post
- Uncontrolled Fire Edge
- Completed Dozer Line
- Completed Line
- Hand Line
- Road as Completed Line
- Highways
- Primary Roads
- Unimproved Roads
- City Limits





**OKANOGAN COMPLEX**

WA-NES-001203  
IAP Map

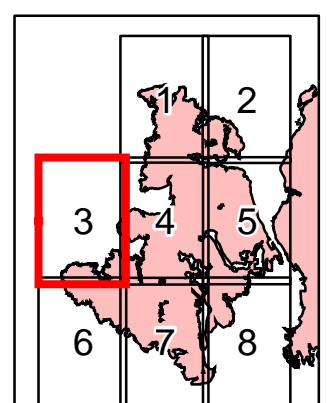
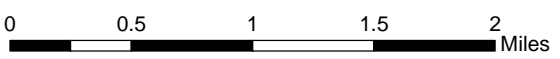
Perimeter information is current as of September 13, 2013 hrs. 133,142 acres.

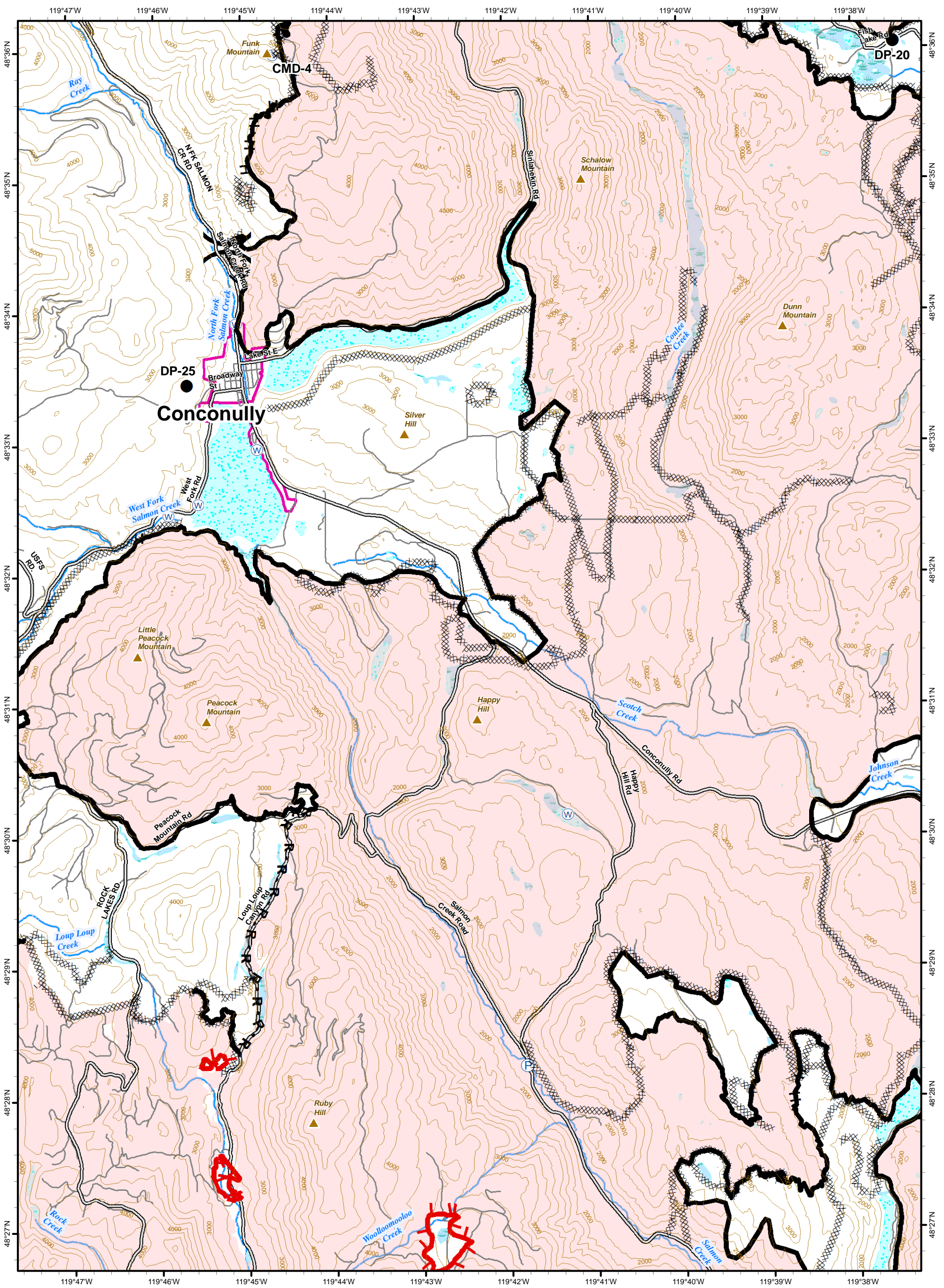
S. B. Miller and B. Mangis: GIS for Central Washington Area IMT 5

September 15, 2015

**Legend**

- Division Breaks
- Fire Polygon
- Water Source
- Repeater
- Drop Point
- Helibase
- Helispot
- Incident Command Post
- Uncontrolled Fire Edge
- Completed Dozer Line
- Completed Line
- Hand Line
- Road as Completed Line
- Highways
- Primary Roads
- Unimproved Roads
- City Limits





**OKANOGAN COMPLEX**

WA-NES-001203  
IAP Map

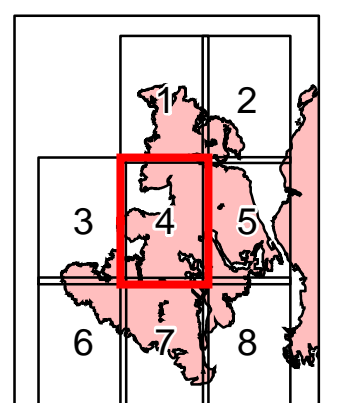
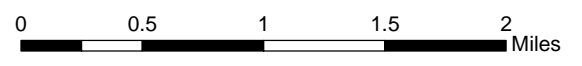
Perimeter information is current as of September 13, 2013 hrs. 133,142 acres.

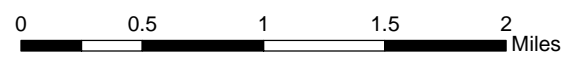
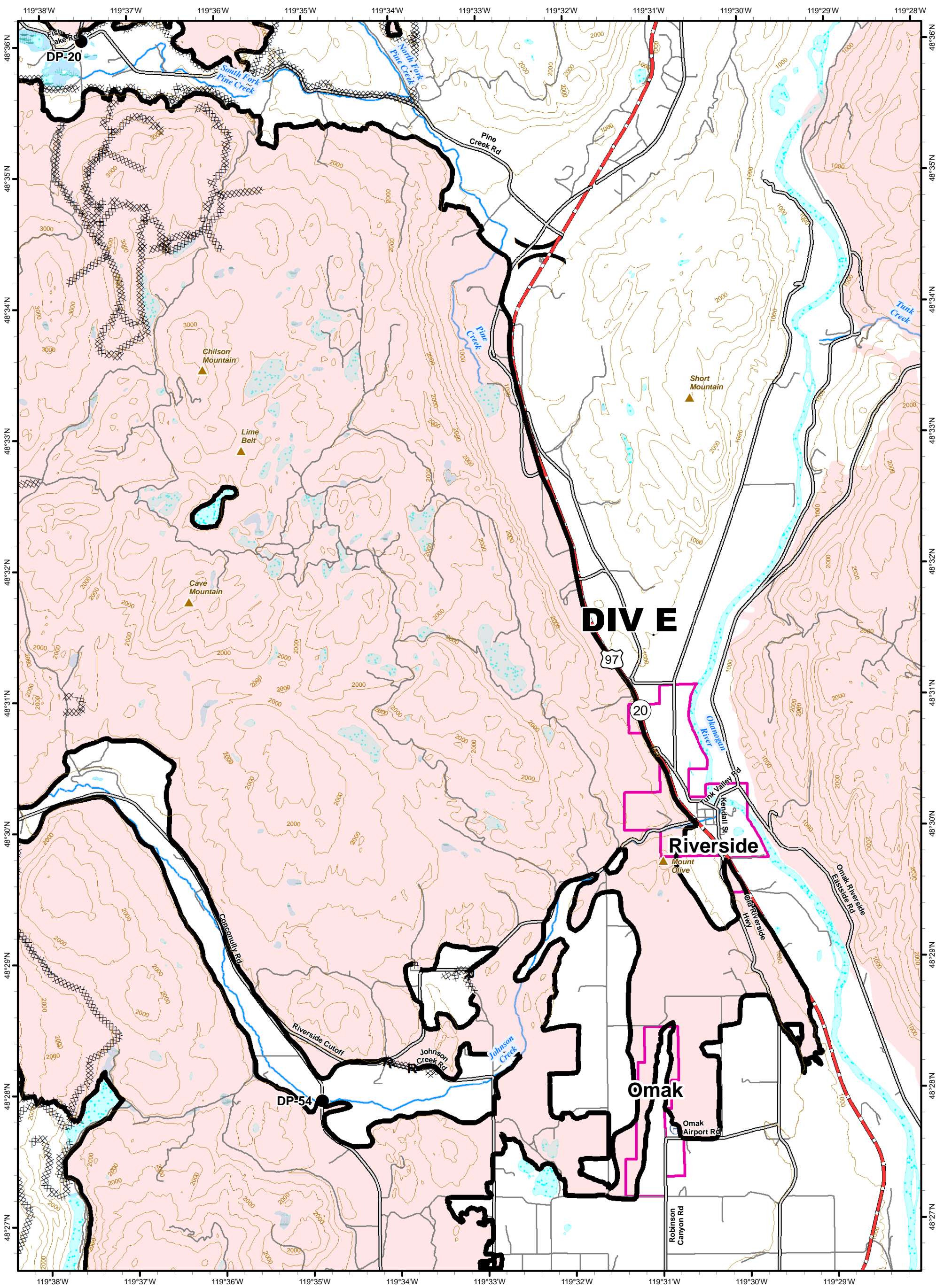
S. B. Miller and B. Mangis: GIS for Central Washington Area IMT 5

September 15, 2015

**Legend**

- ( ) Division Breaks
- Fire Polygon
- (W) Water Source
- (R) Repeater
- Drop Point
- (H) Helibase
- Helispot
- Incident Command Post
- Uncontrolled Fire Edge
- Completed Dozer Line
- Completed Line
- H - H Hand Line
- R - R Road as Completed Line
- Highways
- Primary Roads
- Unimproved Roads
- City Limits





# OKANOGAN COMPLEX

WA-NES-001203  
IAP Map

Perimeter information is current as of September 13, 2013 hrs. 133,142 acres.

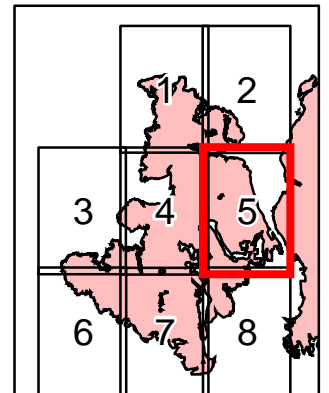


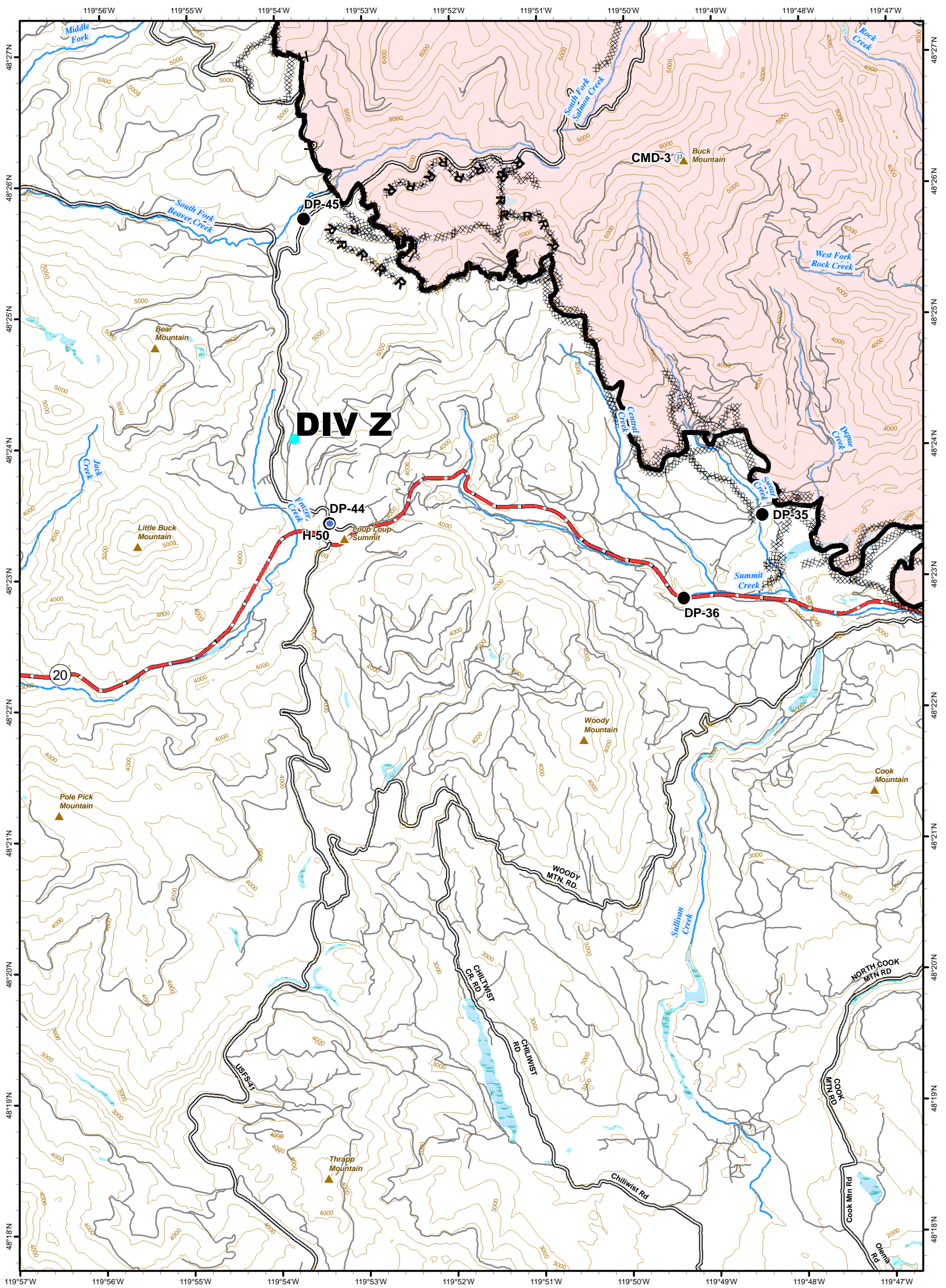
S. B. Miller and B. Mangis: GIS for Central Washington Area IMT 5

September 15, 2015

## Legend

- Division Breaks
- Fire Polygon
- Water Source
- Repeater
- Drop Point
- Helibase
- Helispot
- Incident Command Post
- Uncontrolled Fire Edge
- Completed Dozer Line
- Completed Line
- H - H Hand Line
- R - R Road as Completed Line
- Highways
- Primary Roads
- Unimproved Roads
- City Limits





# OKANOGAN COMPLEX

WA-NES-001203  
IAP Map

Perimeter information  
is current as of  
September 13, 2013  
hrs. 133,142 acres.



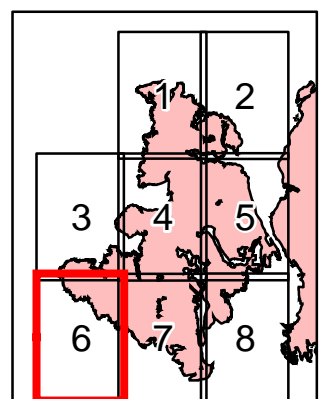
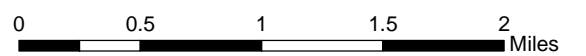
S. B. Miller and B. Mangis: GIS for Central Washington Area IMT 5

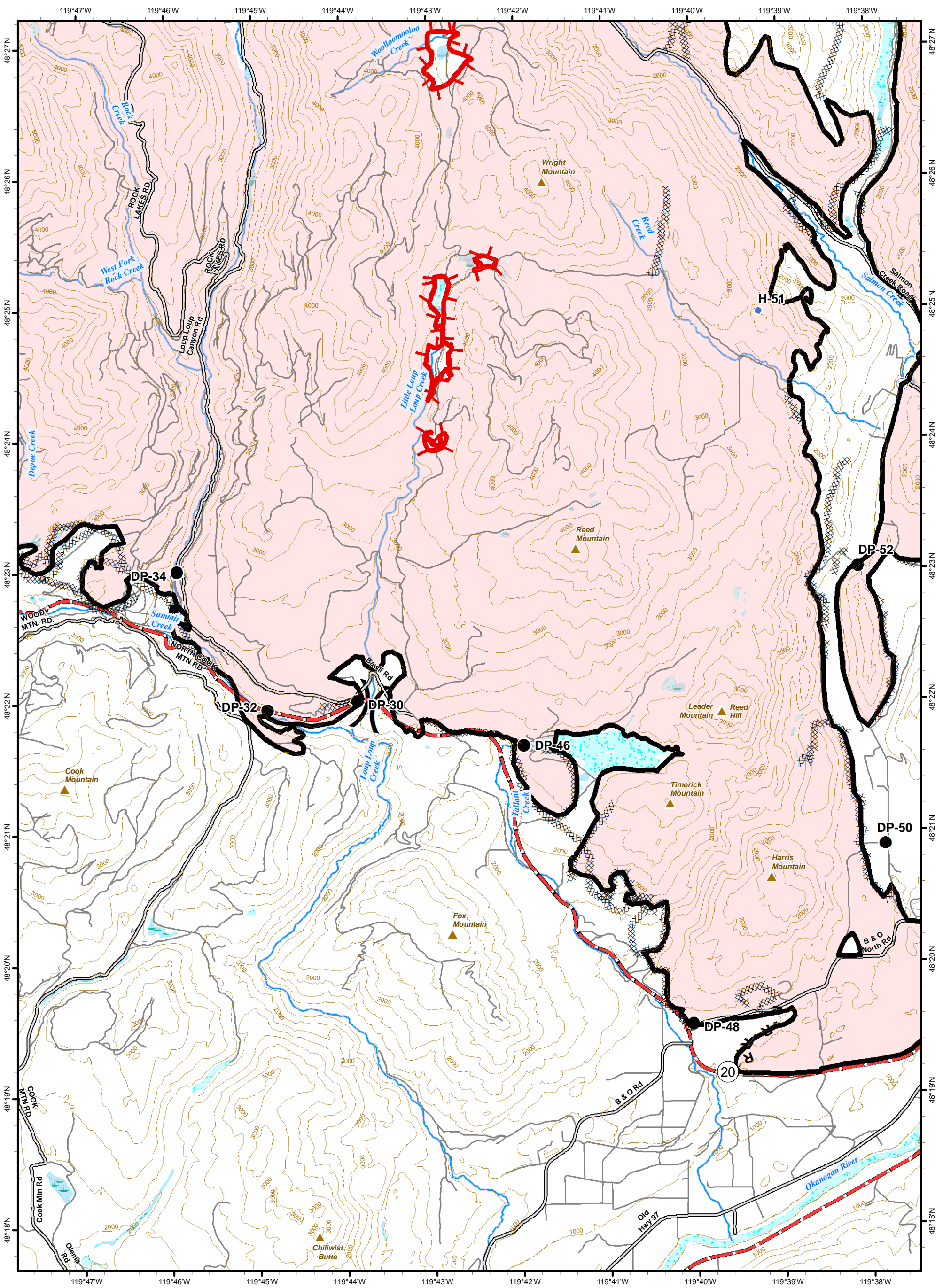
September 15, 2015



## Legend

- Division Breaks
- Fire Polygon
- Water Source
- Repeater
- Drop Point
- Helibase
- Helispot
- Incident Command Post
- Uncontrolled Fire Edge
- Completed Dozer Line
- Completed Line
- H - H Hand Line
- R - R Road as Completed Line
- Highways
- Primary Roads
- Unimproved Roads
- City Limits





**OKANOGAN COMPLEX**

WA-NES-001203  
IAP Map

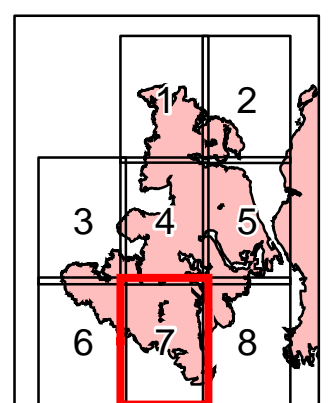
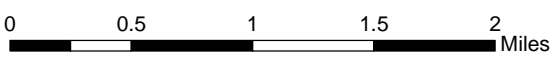
Perimeter information is current as of September 13, 2013 hrs. 133,142 acres.

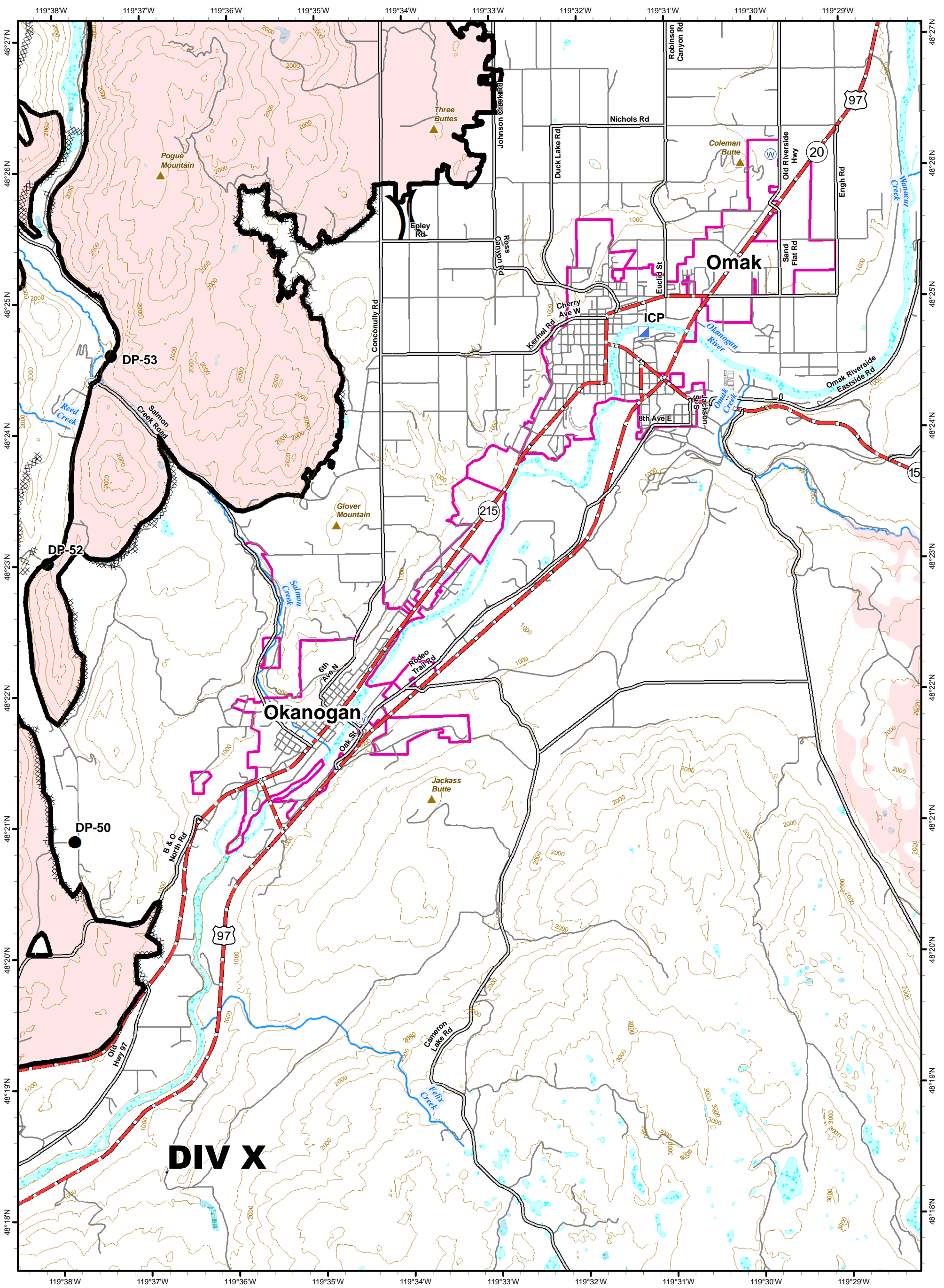
S. B. Miller and B. Mangis: GIS for Central Washington Area IMT 5

September 15, 2015

**Legend**

- Division Breaks
- Uncontrolled Fire Edge
- Fire Polygon
- Completed Dozer Line
- Water Source
- Completed Line
- Repeater
- H - H Hand Line
- Drop Point
- R - R Road as Completed Line
- Helibase
- Highways
- Helispot
- Primary Roads
- Incident Command Post
- Unimproved Roads
- City Limits





**DIV X**

**OKANOGAN COMPLEX**

WA-NES-001203  
IAP Map

Perimeter information is current as of September 13, 2013 hrs. 133,142 acres.

S. B. Miller and B. Mangis: GIS for Central Washington Area IMT 5

September 15, 2015

**Legend**

- ( ) Division Breaks
- Fire Polygon
- (W) Water Source
- (R) Repeater
- Drop Point
- (H) Helibase
- Helispot
- ▣ Incident Command Post
- Uncontrolled Fire Edge
- Completed Dozer Line
- Completed Line
- H - H Hand Line
- R - R Road as Completed Line
- Highways
- Primary Roads
- Unimproved Roads
- City Limits

