





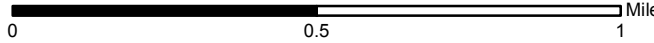
123°50'0"W 123°49'30"W 123°49'0"W 123°48'30"W 123°48'0"W 123°47'30"W 123°47'0"W 123°46'30"W 123°46'0"W 123°45'30"W 123°45'0"W 123°44'30"W 123°44'0"W


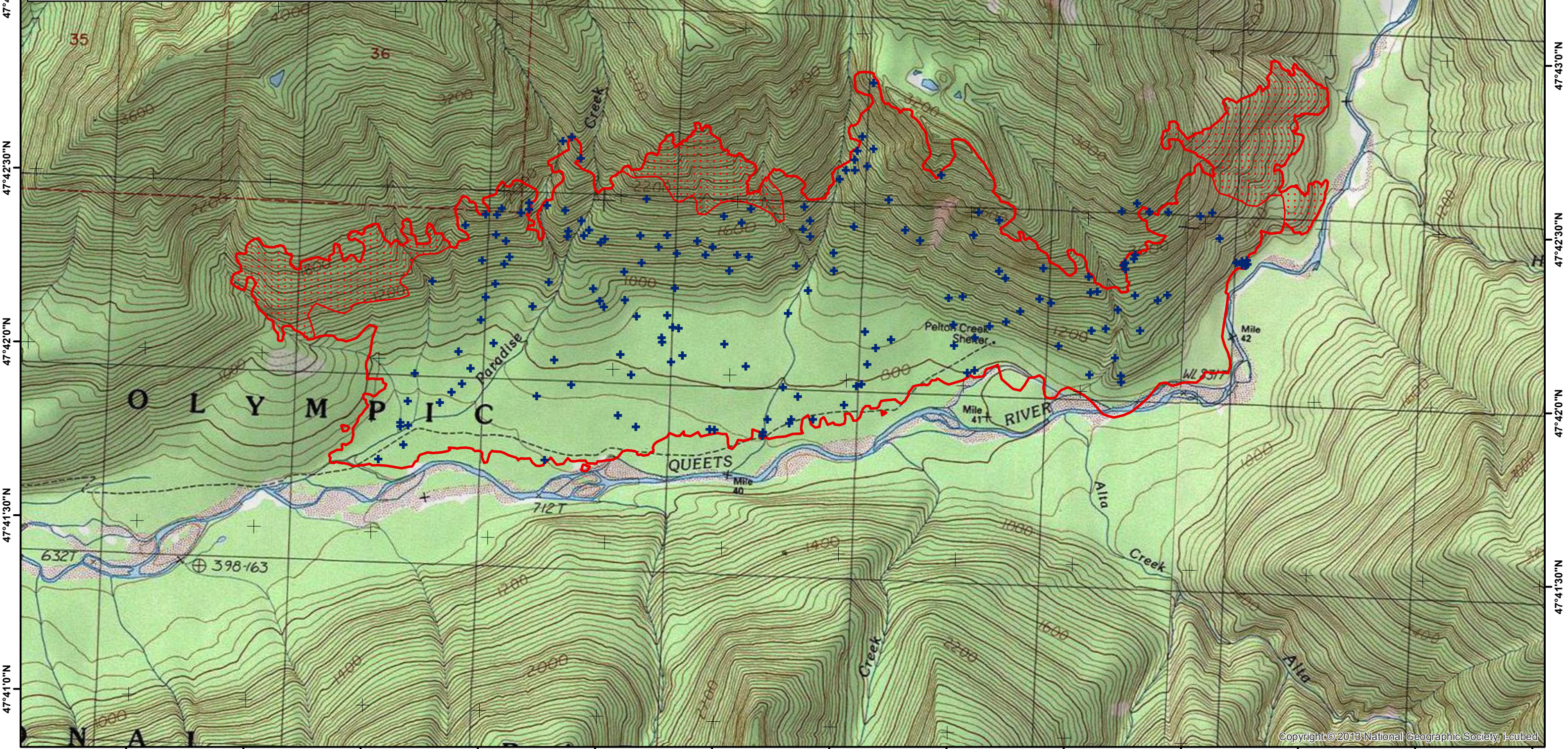
NATIONAL

INFRARED OPERATIONS

Paradise
 IR Flight:
 July, 13 2015 2208 PDT
 Acres : 1,598
 Interpreter : Jim Grace

 Scattered Heat  Isolated Heat
 Heat Perimeter

Lat/Long
 GCS WGS84
 30 second spacing

 Miles
 0 0.5 1

123°49'30"W 123°49'0"W 123°48'30"W 123°48'0"W 123°47'30"W 123°47'0"W 123°46'30"W 123°46'0"W 123°45'30"W 123°45'0"W 123°44'30"W 123°44'0"W 123°43'30"W