

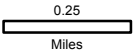
# Sleepy Hollow Fire

WA-SPS-282

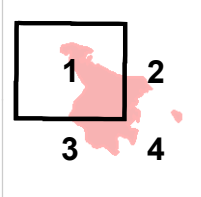
## IAP Map

Day Shift  
06/30/2015  
approx. 2,950 acres

Perimeter as of 06/29/2015 @ 1800



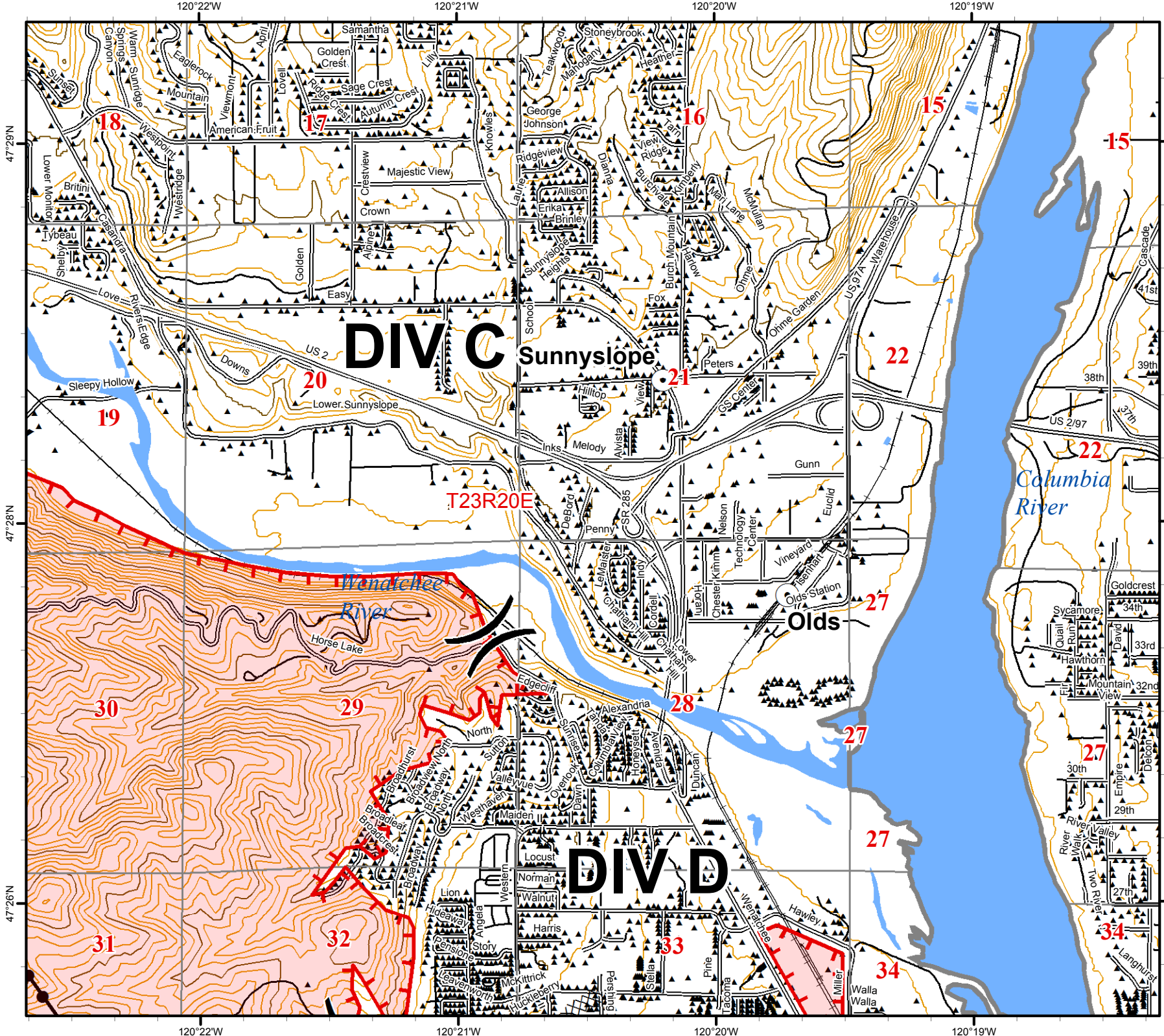
Page 1 of 4



WIMT2



- Town & City Locations
- Uncontrolled Fire Edge
- Completed Dozer Line
- Roads
- Railroad
- Transmission Line
- 100-foot Contours
- 40-foot Contours



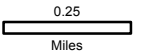
# Sleepy Hollow Fire

WA-SPS-282

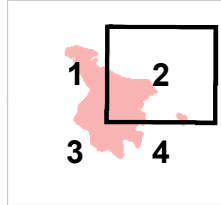
## IAP Map

Day Shift  
06/30/2015  
approx. 2,950 acres

Perimeter as of 06/29/2015 @ 1800



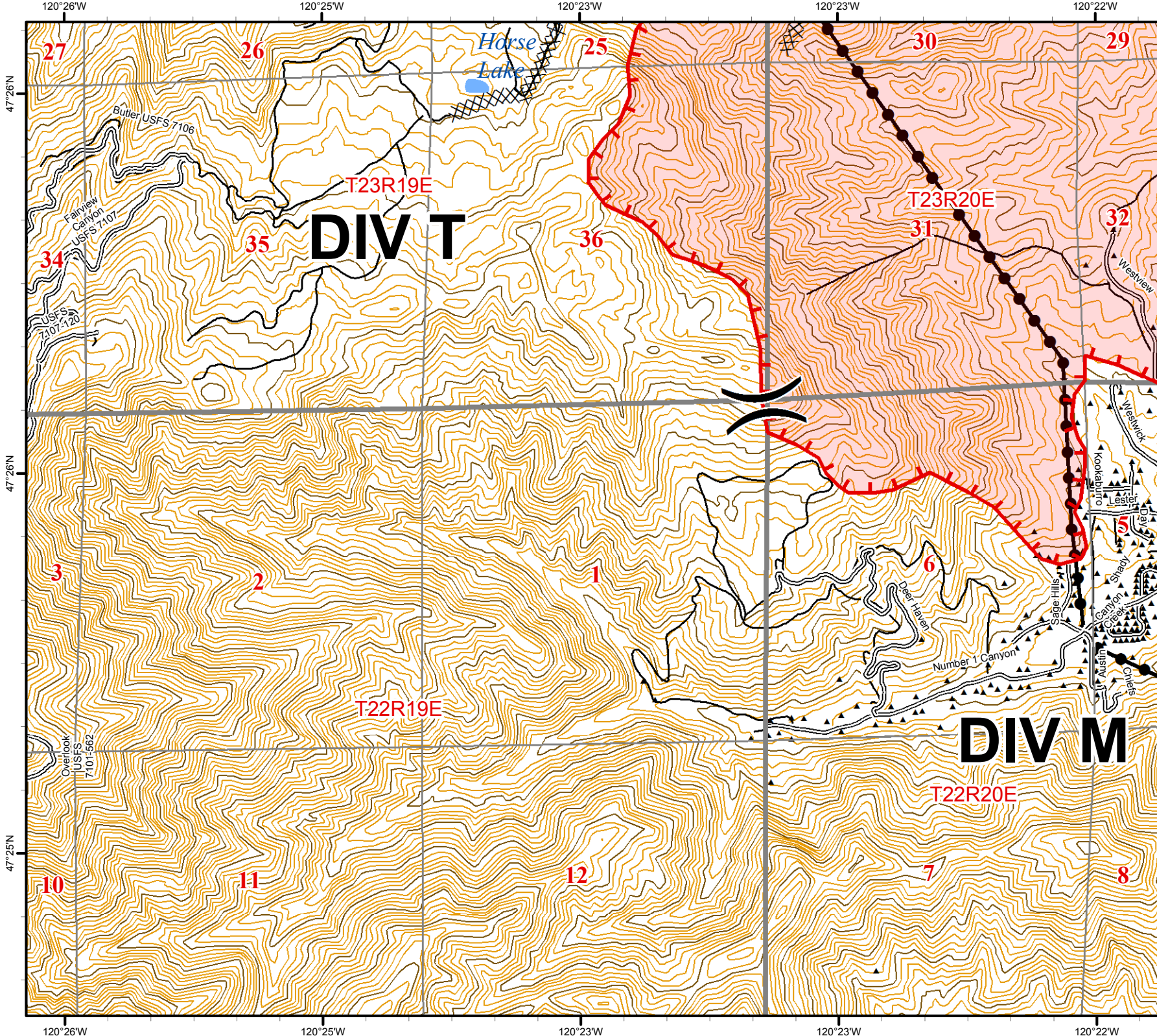
Page 2 of 4



WIMT2



- Town & City Locations
- Uncontrolled Fire Edge
- Completed Dozer Line
- Roads
- Railroad
- Transmission Line
- 100-foot Contours
- 40-foot Contours



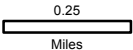
**Sleepy Hollow Fire**

WA-SPS-282

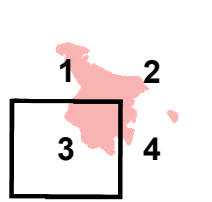
**IAP Map**

Day Shift  
06/30/2015  
approx. 2,950 acres

Perimeter as of 06/29/2015 @ 1800



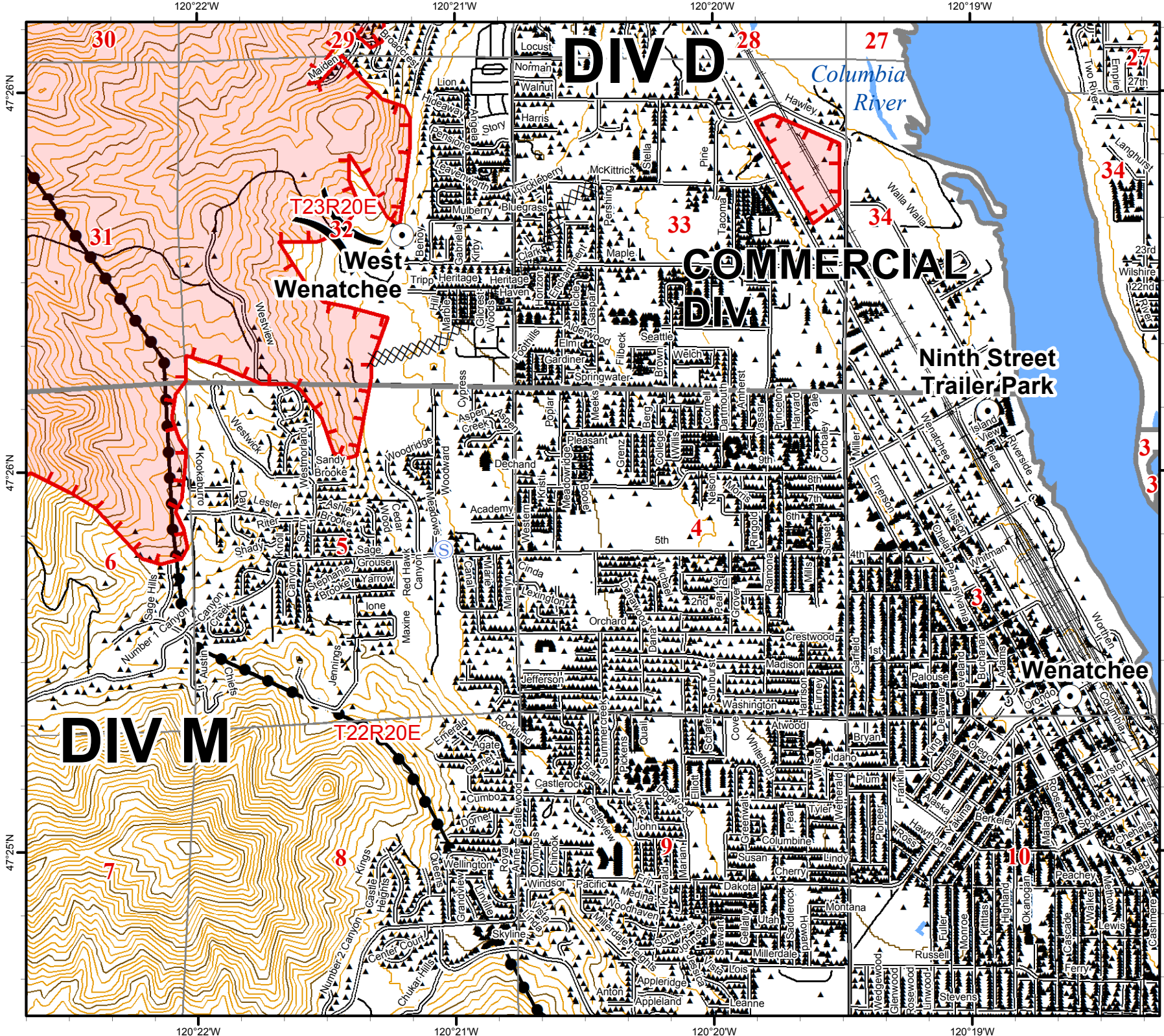
Page 3 of 4



WIMT2



- Uncontrolled Fire Edge
- Completed Dozer Line
- Roads
- Transmission Line
- 100-foot Contours
- 40-foot Contours

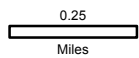


# Sleepy Hollow Fire

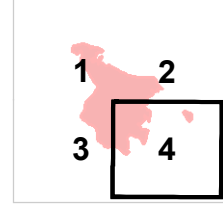
WA-SPS-282

**IAP Map**  
 Day Shift  
 06/30/2015  
 approx. 2,950 acres

Perimeter as of 06/29/2015 @ 1800



Page 4 of 4



WIMT2



- Staging Area
- Town & City Locations
- Uncontrolled Fire Edge
- Completed Dozer Line
- Roads
- Railroad
- Transmission Line
- 100-foot Contours
- 40-foot Contours