

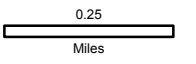
Sleepy Hollow Fire

WA-SPS-282

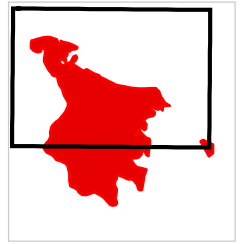
IAP Map

Day Shift
07/01/2015
approx. 2,950 acres

Perimeter as of 06/30/2015 @ 1800



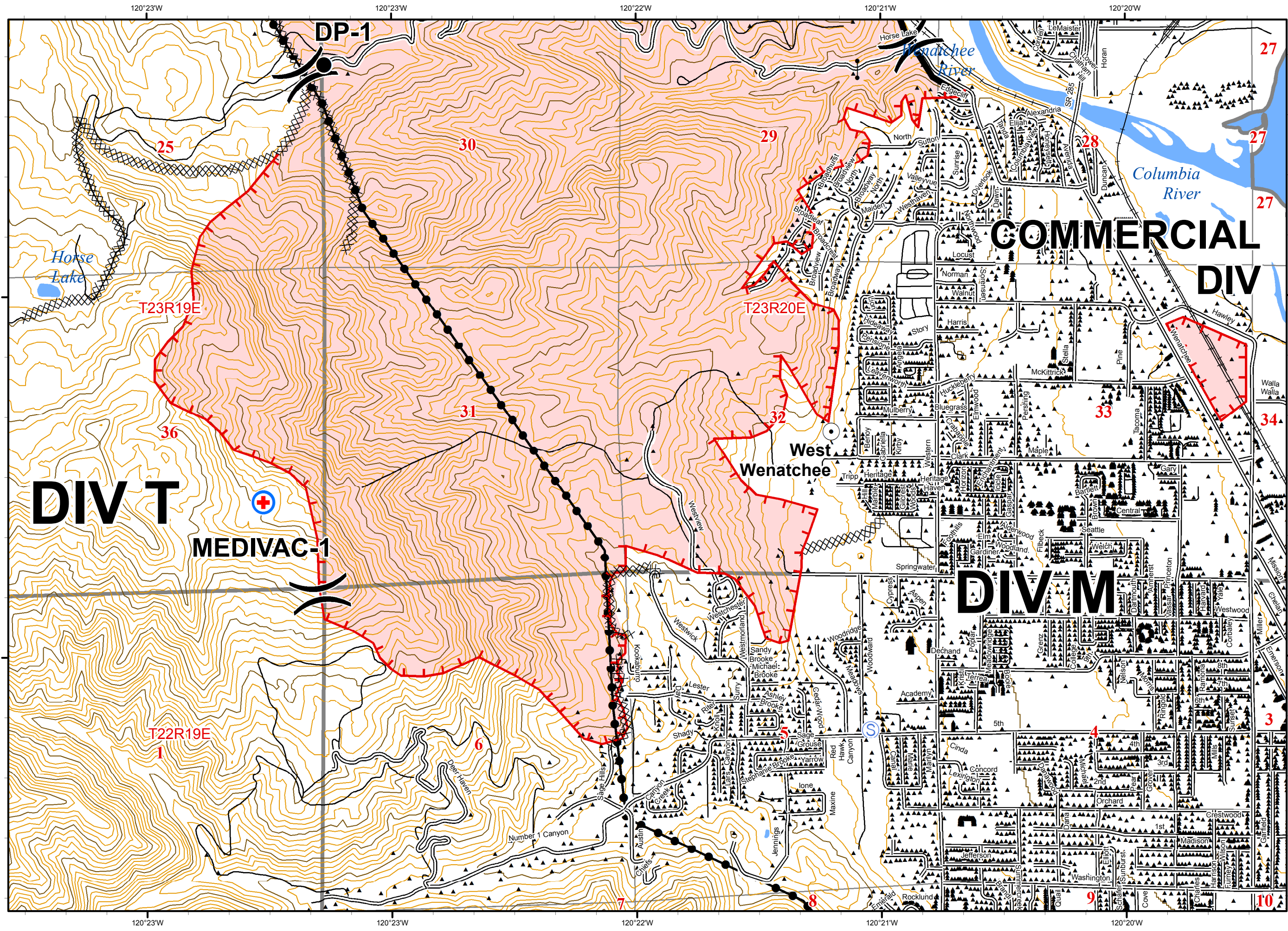
Map 1 of 2



WIMT2



- Drop Point
- Gate
- Town & City Locations
- Uncontrolled Fire Edge
- ▨ Completed Dozer Line
- Completed Line
- Railroad
- Transmission Line



Sleepy Hollow Fire

WA-SPS-282

IAP Map
Day Shift
07/01/2015
approx. 2,950 acres

Perimeter as of 06/30/2015 @ 1800

0.25
Miles

Map 2 of 2

WIMT2

Drop Point
Gate
MediVac Site
Staging Area
Town & City Locations
Uncontrolled Fire Edge
Completed Dozer Line
Completed Line
Railroad
Transmission Line