

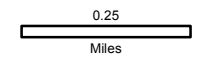
Sleepy Hollow Fire

WA-SPS-282

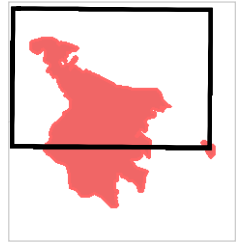
IAP Map
Day Shift
7/2/2015

approx. 2,950 acres

Perimeter as of 7/1/2015 @ 2145



Map 1 of 2

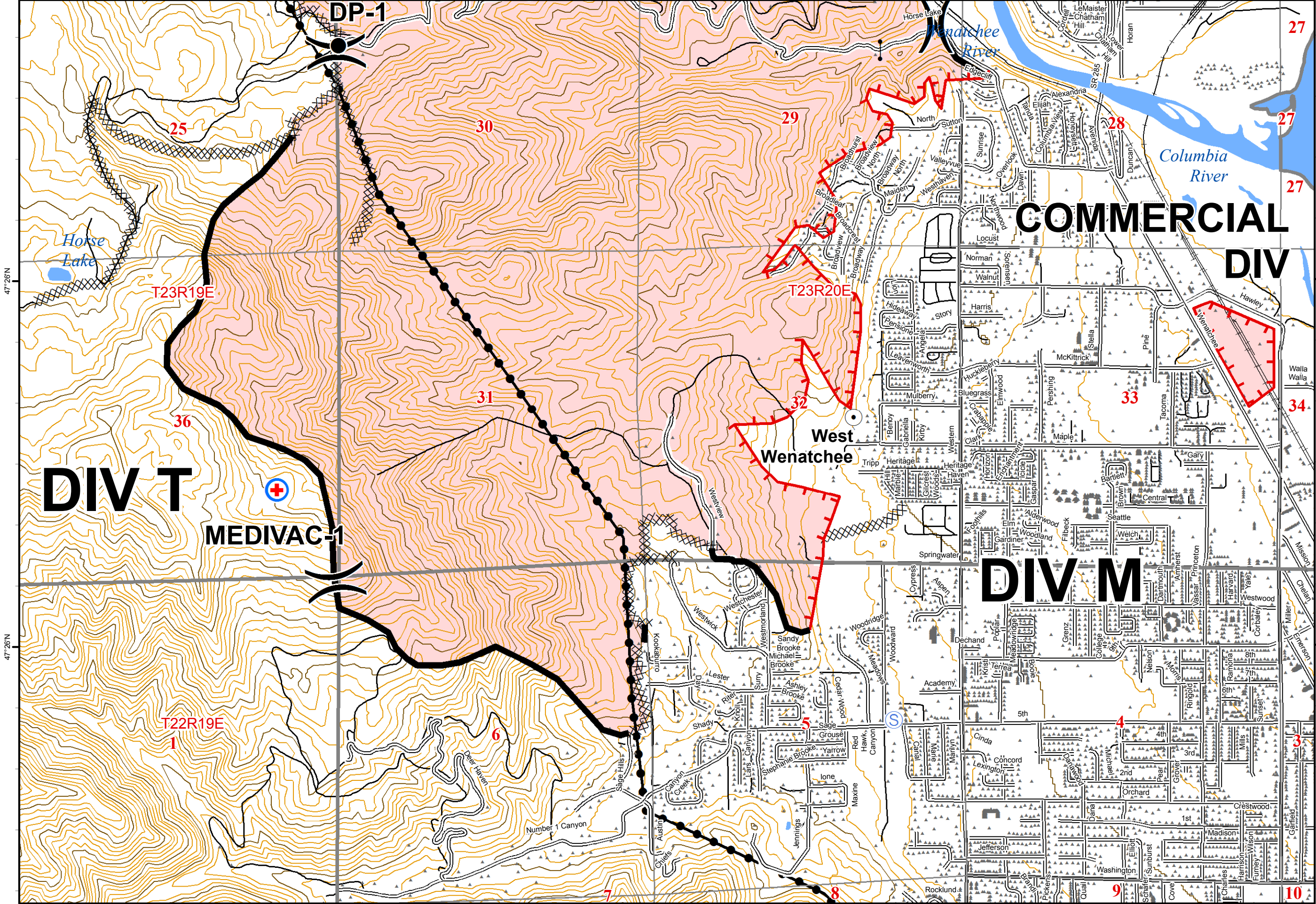


WIMT2



- Drop Point
- 🔥 Fire Location
- ⚡ Gate
- ⊙ Town & City Locations
- ▬ Uncontrolled Fire Edge
- ▬ Completed Dozer Line
- ▬ Completed Line
- Railroad
- ⚡ Transmission Line

120°23'W 120°23'W 120°22'W 120°21'W 120°20'W



120°23'W 120°23'W 120°22'W 120°21'W 120°20'W

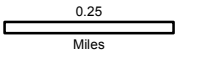
Sleepy Hollow Fire

WA-SPS-282

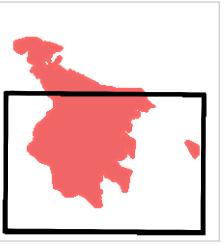
IAP Map

Day Shift
7/2/2015
approx. 2,950 acres

Perimeter as of 7/1/2015 @ 2145



Map 2 of 2



WIMT2



- Drop Point
- Gate
- ⊕ MediVac Site
- Ⓢ Staging Area
- Town & City Locations
- ┌ Uncontrolled Fire Edge
- ⊗ Completed Dozer Line
- ▬ Completed Line
- Railroad
- Transmission Line