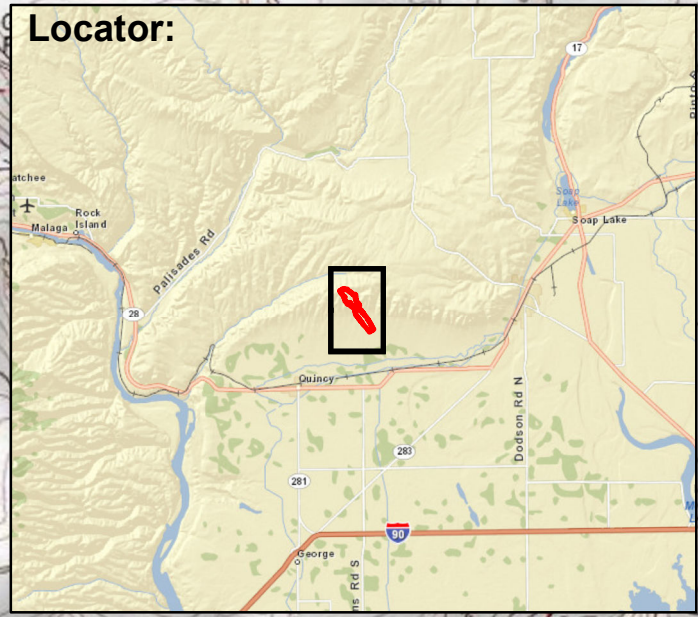


119°48'30"W 119°48'0"W 119°47'30"W 119°47'0"W 119°46'30"W 119°46'0"W 119°45'30"W 119°45'0"W 119°44'30"W



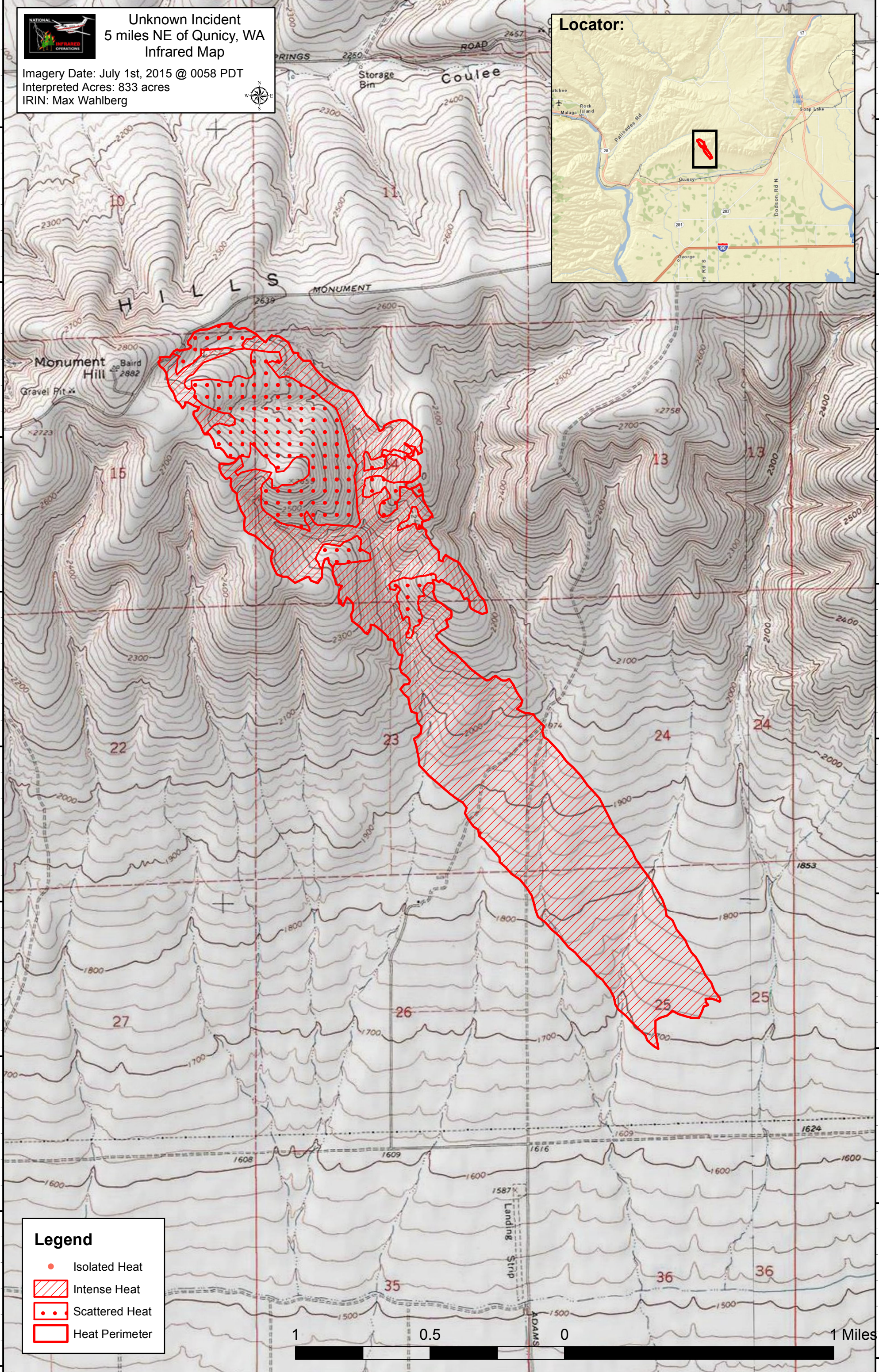
Unknown Incident 5 miles NE of Quincy, WA Infrared Map

Imagery Date: July 1st, 2015 @ 0058 PDT
Interpreted Acres: 833 acres
IRIN: Max Wahlberg



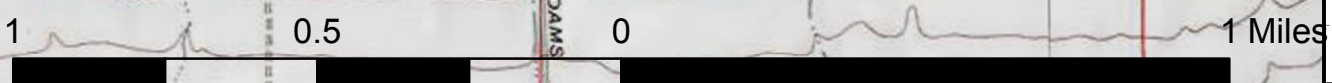
47°20'0"N
47°19'30"N
47°19'0"N
47°18'30"N
47°18'0"N
47°17'30"N
47°17'0"N
47°16'30"N
47°16'0"N

47°20'0"N
47°19'30"N
47°19'0"N
47°18'30"N
47°18'0"N
47°17'30"N
47°17'0"N
47°16'30"N
47°16'0"N



Legend

- Isolated Heat
- Intense Heat
- Scattered Heat
- Heat Perimeter



119°48'30"W 119°48'0"W 119°47'30"W 119°47'0"W 119°46'30"W 119°46'0"W 119°45'30"W 119°45'0"W 119°44'30"W